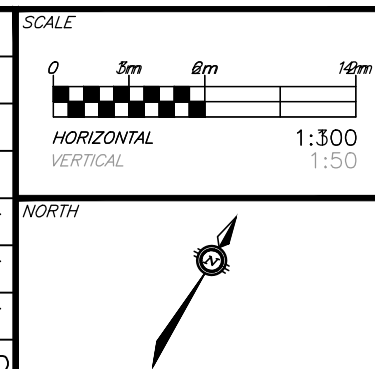


**CAUTION**  
THE POSITION OF ALL POLE LINES,  
CONDUITS, WATERMAINS, SEWERS AND OTHER  
UNDERGROUND AND OVERGROUND UTILITIES  
AND STRUCTURES IS NOT NECESSARILY  
SHOWN ON THE CONTRACT DRAWINGS, AND  
WHERE SHOWN, THE ACCURACY OF THE  
POSITION OF SUCH UTILITIES AND  
STRUCTURES IS NOT GUARANTEED. BEFORE  
STARTING WORK, DETERMINE THE EXACT  
LOCATION OF ALL SUCH UTILITIES AND  
STRUCTURES AND ASSUME ALL LIABILITY FOR  
DAMAGE TO THEM.

**JOB BENCH MARK** JBM▲  
FIRE HYDRANT TOP OF SPINDLE ELEVATION=93.57  
NORTHING=5020457.01 EASTING=366125.53

**TOPOGRAPHIC INFORMATION**  
PART OF LOT 24, CONCESSION 1 (RIDEAU FRONT)  
CITY OF OTTAWA.  
TOPOGRAPHIC INFORMATION PROVIDED BY FAIRHALL MOFFATT & WOODLAND  
LIMITED O.L.S (TP\_AE175.DWG) SURVEY DATED AUGUST 29, 2024.  
COORDINATES: (SMARTNET) MTM ZONE 9, NAD83 CSRS (2010).

REV	REVISION DESCRIPTION	DATE	BY	APPROVED
3	ISSUED FOR APPROVAL	12/17/25	AC	BMT
2	ISSUED FOR APPROVAL	07/11/25	SAB	BMT
1	ISSUED FOR COORDINATION	05/25/25	AC	BMT



DESIGNED BY

REVIEWED BY

PEGASUS DEVELOPMENT CORP.  
1914 MERIVALE ROAD  
OTTAWA, ON. K2G 1E8

**exp.** Services Inc.  
1-813-888-1890 | F-1-613-225-7330  
3000 Steeles Ave. E., Unit 100  
Ottawa, ON K2B 8K6  
Canada  
www.exp.com

• BUILDINGS • EARTH & ENVIRONMENT • ENERGY •  
• INDUSTRIAL • INFRASTRUCTURE • SUSTAINABILITY •

BASEPLAN	SAB
DESIGN	JLF
CHECKED	BMT
CAD	SAB
PROJECT MANAGER	BMT
APPROVED	BMT

PROJECT	CASSONE COURT 2028 MERIVALE ROAD OTTAWA, ONTARIO	PROJECT No. OTT-24015379-AD SURVEY FMW
TITLE	SITE GRADING PLAN RETAINING WALL PROFILE	DRAWING No. C201