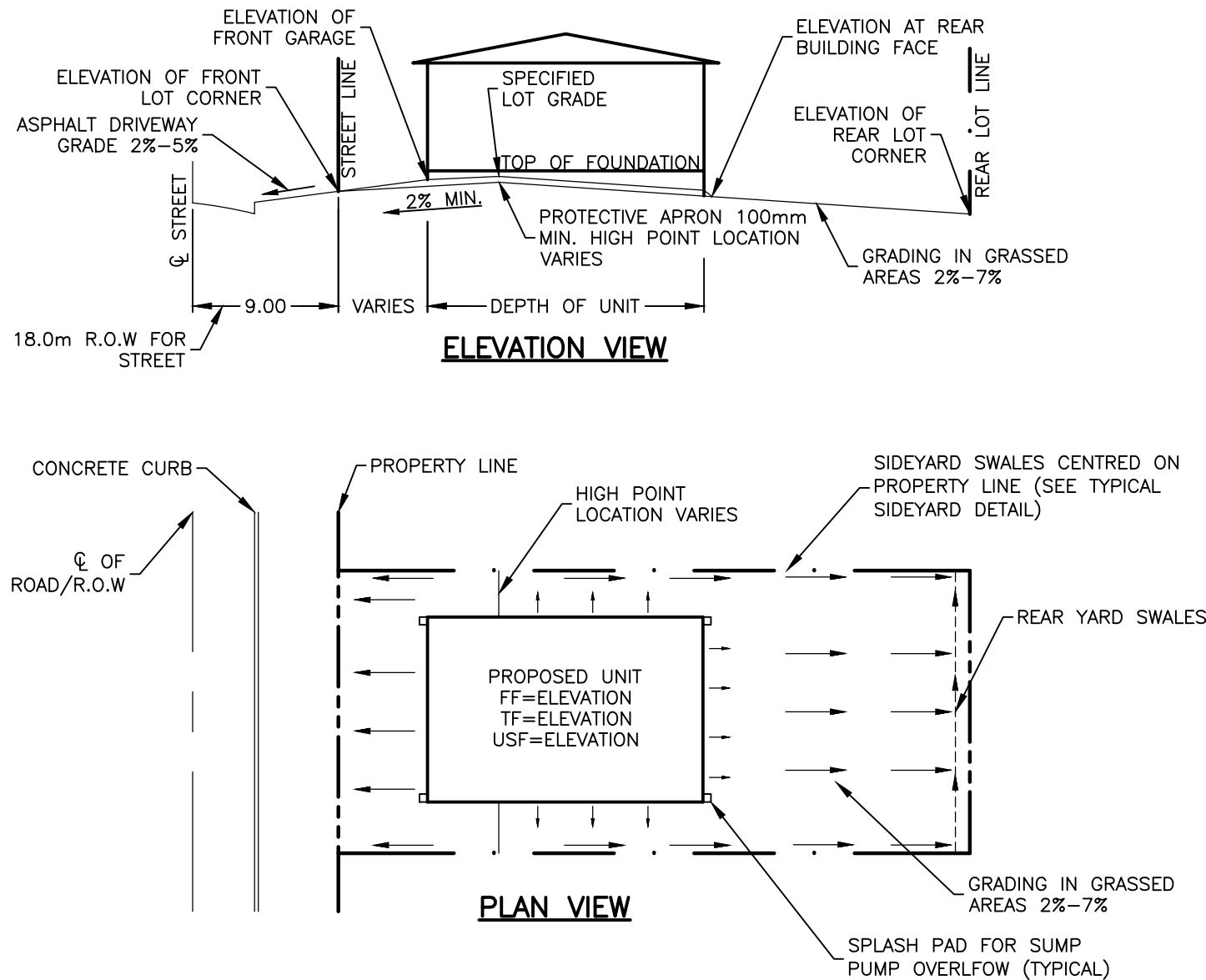
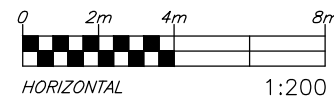


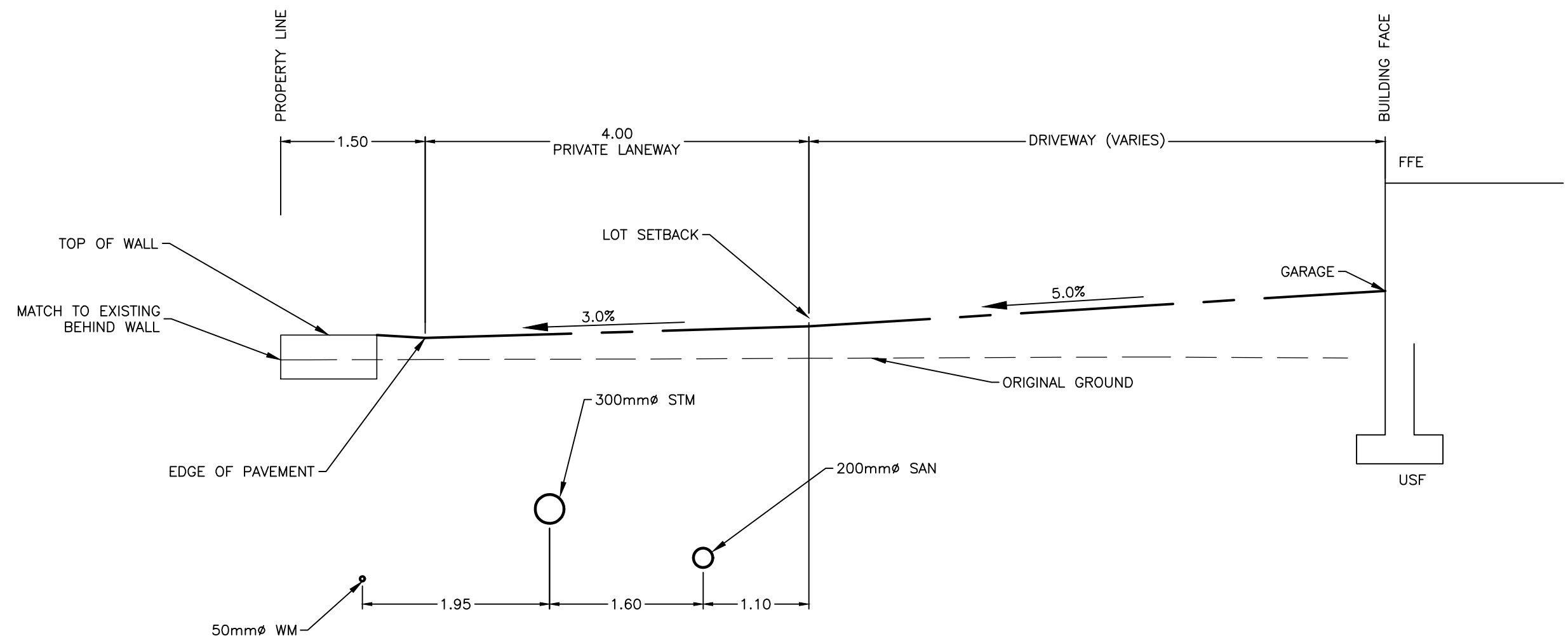
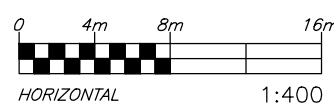
STORM INLET DETAIL

SCALE: N.T.S.



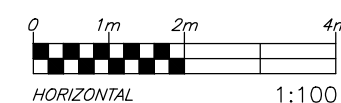
TYPICAL LOT GRADING PLAN

SCALE: N.T.S.



TYPICAL 4.0m PRIVATE ROAD SECTION

SCALE: 1:50



CAUTION
THE POSITION OF ALL POLE LINES, CONDUITS, WATERMAINS, SEWERS AND OTHER UNDERGROUND AND OVERGROUND UTILITIES AND STRUCTURES IS NOT NECESSARILY SHOWN ON THE CONTRACT DRAWINGS, AND WHERE SHOWN, THE ACCURACY OF THE POSITION OF SUCH UTILITIES AND STRUCTURES IS NOT GUARANTEED. BEFORE STARTING WORK, DETERMINE THE EXACT LOCATION OF ALL SUCH UTILITIES AND STRUCTURES AND ASSUME ALL LIABILITY FOR DAMAGE TO THEM.

JOB BENCH MARK

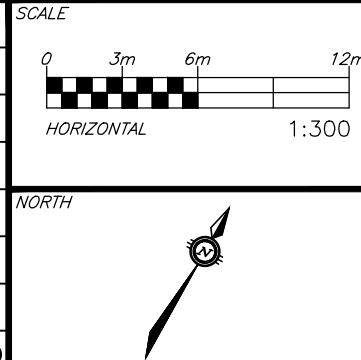
FIRE HYDRANT TOP OF SPINDLE ELEVATION=93.57
NORTHING=5020457.01 EASTING=366125.53

TOPOGRAPHIC INFORMATION

PART OF LOT 24, CONCESSION 1 (RIDEAU FRONT)
CITY OF OTTAWA.

TOPOGRAPHIC INFORMATION PROVIDED BY FAIRHALL MOFFATT & WOODLAND LIMITED O.L.S (TP_AE175.DWG) SURVEY DATED AUGUST 29, 2024.
COORDINATES: (SMARTNET) MTM ZONE 9, NAD83 CSRS (2010).

REV	REVISION DESCRIPTION	DATE	BY	APPD
2	ISSUED FOR APPROVAL	12/17/25	AC	BMT
1	ISSUED FOR APPROVAL	07/11/25	SAB	BMT



DESIGNED BY

REVIEWED BY

PEGASUS DEVELOPMENT CORP.
1914 MERIVALE ROAD
OTTAWA, ON. K2G 1E8

exp. Services Inc.
1-813-888-1880 | F +1-613-225-7330
2425, Deseronto Drive, Unit 100
Ottawa, ON K2B 8K6
Canada
www.exp.com

• BUILDINGS • EARTH & ENVIRONMENT • ENERGY •
• INDUSTRIAL • INFRASTRUCTURE • SUSTAINABILITY •

BASE PLAN	SAB
DESIGN	JLF
CHECKED	BMT
CAD	SAB
PROJECT MANAGER	BMT
APPROVED	BMT

PROJECT	CASSONE COURT 2028 MERIVALE ROAD OTTAWA, ONTARIO	PROJECT No. OTT-24015379-A0 SURVEY FMW
TITLE	DETAIL SHEET 2	DATE MARCH 28, 2025 DRAWING No. C401