

CLIENT
FORUM ASSET MANAGEMENT
EAST PODIUM, 2ND FLOOR
165 BAY STREET
TORONTO, ON, M5J 2T3
T. 416-947-0389
www.forumam.com

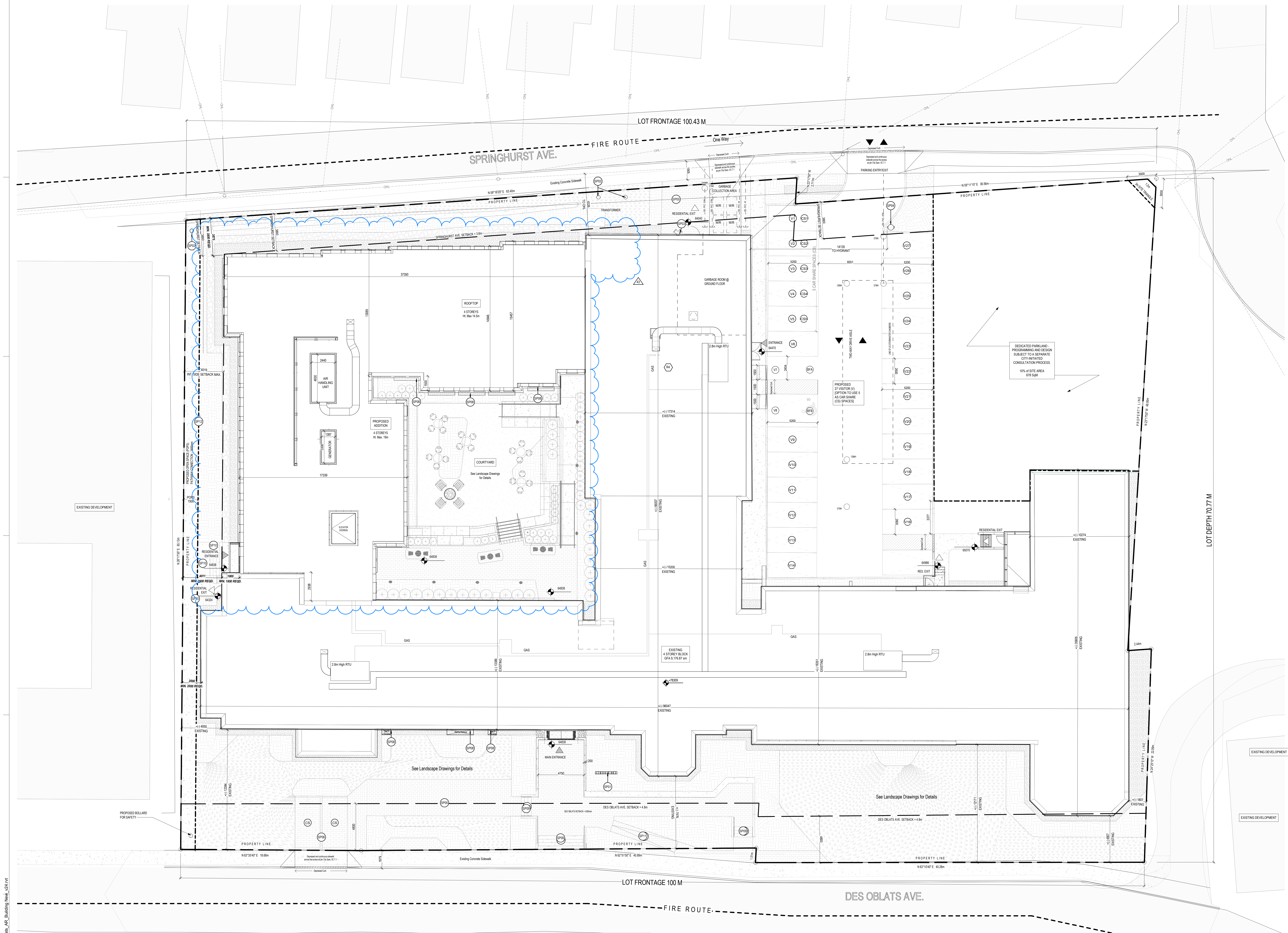
ARCHITECTURE
lemay
Lemay CO INC
345 Adelaide Street West,
Suite 200, Toronto,
ON, M5V 1P5.

MECHANICAL & ELECTRICAL
STRUCTURAL
D+W Structural Engineering
Suite 110
325 Dundas Street
West, Toronto, ON, M5G 1R4
T. 416-593-9893

CIVIL
LANDSCAPE
Lemay
3501 Saint-Jacques Street
Montreal, QC, H3C 1H2
T. 514-252-9101 / www.lemay.com

SURVEYOR
Amis, O'Sullivan, Volebek Ltd.
Suite 300
14 Concorde Gate
Nepean, ON, K2E 7S8
T. 613-727-8551 / www.aovltd.com

- NOTES**
- CONTRACTOR TO CHECK AND VERIFY ALL DIMENSIONS PRIOR TO COMMENCING WORK.
 - CONTRACTOR TO COMPLY WITH ALL BUILDING CODES, REGULATIONS, AND ORDINANCES OF AUTHORITIES HAVING JURISDICTION.
 - THIS DRAWING IS NOT TO BE USED FOR CONSTRUCTION UNLESS STAMPED ISSUED FOR CONSTRUCTION BY LEMAY ARCHITECTURE AND DESIGN LTD.
 - DO NOT SCALE DRAWING.
 - THIS DRAWING MAY NOT BE COPIED, ALTERED, OR DISTRIBUTED IN WHOLE OR IN PART WITHOUT WRITTEN PERMISSION. COPYRIGHT © LEMAY ARCHITECTURE AND DESIGN LTD.
 - REPORT ANY ERRORS AND OMISSIONS TO THE CONSULTANT IMMEDIATELY BEFORE COMMENCING WORK.
 - DEVIATIONS FROM THE CONTRACT DOCUMENTS WITHOUT WRITTEN APPROVAL FROM CONSULTANT ARE SUBJECT TO CORRECTIONS AT CONTRACTOR EXPENSE.
 - DIMENSIONS ARE IN METRIC (MM) UNLESS NOTED OTHERWISE.



ISSUE	DATE	DESCRIPTION
45	2025-11-28	ISSUED FOR VALUE ENGINEERING - LANDSCAPING
43	2025-12-02	ISSUED FOR VALUE ENGINEERING - LANDSCAPING
32	2025-09-26	ISSUED FOR CONSULTATION
31	2025-09-26	ISSUED FOR ADDENDUM 08
30	2025-09-18	ISSUED FOR ADDENDUM 07
28	2025-08-29	RESUBMITTED FOR BUILDING PERMIT
26	2025-08-22	ISSUED FOR CONSULTANT COORDINATION
22	2025-08-06	ISSUED FOR ADDENDUM 04
20	2025-07-28	ISSUED FOR BUILDING SCIENCE COORDINATION
19	2025-07-21	ISSUED FOR SURVEYOR
18	2025-06-26	ISSUED FOR TENDER
11	2025-04-02	ISSUED FOR TENDER
10	2025-04-29	EARLY WORKS BUILDING PERMIT SUBMISSION
9	2025-04-10	RE-ISSUED FOR FOUNDATION PERMIT
8	2025-03-07	ISSUED FOR BUILDING PERMIT
5	2025-02-28	RE-ISSUED FOR FOUNDATION PERMIT
4	2024-12-20	ISSUED FOR 0% PROGRESS SET
3	2024-11-13	ISSUED FOR FOUNDATION PERMIT
2	2024-09-16	ISSUED FOR CLASS C
1	2024-09-06	ISSUED FOR SPA RESUBMISSION
#	DATE	DESCRIPTION

SITE PLAN LEGEND:

- Grass
- Stone Retaining Wall
- New Gravel Infill
- New Concrete Site Elements, Precast (Landscape Drawings)
- New Plantings (Refer to Landscape Drawings)
- Parkland Dedication / Popcorn Separation
- Fence - Parkland
- Property Line
- Building Entrance
- Site Setback Line
- Road Centreline
- Overhead Wires (Existing)
- Depressed Curb in Sidewalk
- Shared Connection
- Drive Aisle Direction (Vehicular)
- Spot Elevation Marker
- Building Exit
- Parking Space Tag
- New Ramp (Refer to Landscape Drawings)
- Site Lighting - Bollard
- New Outdoor Bike Rack
- Accessible Parking Symbol
- Waste / Recycling Bin(s)
- Parking Space

SITE PLAN NOTES:

- REFER ALSO TO SITE SURVEY FOR EXISTING CONDITIONS, SHEET A02.
- COORDINATE SITE PLAN INFORMATION WITH CIVIL AND LANDSCAPE DRAWINGS.
- REFER TO ROOF PLANS FOR EXTENT OF ACCESSIBLE, PLANTED, AND INACCESSIBLE ROOF TYPES.
- COORDINATE WITH ASSOCIATED DEMOLITION PERMIT FOR ADDITIONAL DEMOLITION & SITE WORKS.

SITE PLAN KEYNOTES:

- SP1 PROVIDE NEW FREE-STANDING BUILDING SIGNAGE.
- SP2 PROVIDE NEW BOLLARD FOR SAFETY. REFER TO DETAILS.
- SP3 PROVIDE SHARED CONNECTION.
- SP4 PROVIDE NEW FIRE HYDRANT.
- SP5 PROVIDE NEW FIRE HYDRANT.
- SP6 PROVIDE NEW BIKE RACKS. REFER TO PLAN DETAILS, NOTES & LANDSCAPE DRAWINGS.
- SP7 PROVIDE NEW BIKE RACKS. REFER TO PLAN DETAILS, NOTES & LANDSCAPE DRAWINGS.
- SP8 PROVIDE NEW BIKE RACKS. REFER TO PLAN DETAILS, NOTES & LANDSCAPE DRAWINGS.
- SP9 PROVIDE NEW BIKE RACKS. REFER TO PLAN DETAILS, NOTES & LANDSCAPE DRAWINGS.
- SP10 PROVIDE NEW BIKE RACKS. REFER TO PLAN DETAILS, NOTES & LANDSCAPE DRAWINGS.
- SP11 PROVIDE NEW BIKE RACKS. REFER TO PLAN DETAILS, NOTES & LANDSCAPE DRAWINGS.
- SP12 PROVIDE NEW BIKE RACKS. REFER TO PLAN DETAILS, NOTES & LANDSCAPE DRAWINGS.
- SP13 PROVIDE NEW BIKE RACKS. REFER TO PLAN DETAILS, NOTES & LANDSCAPE DRAWINGS.
- SP14 PROVIDE NEW BIKE RACKS. REFER TO PLAN DETAILS, NOTES & LANDSCAPE DRAWINGS.
- SP15 PROVIDE NEW BIKE RACKS. REFER TO PLAN DETAILS, NOTES & LANDSCAPE DRAWINGS.
- SP16 PROVIDE NEW BIKE RACKS. REFER TO PLAN DETAILS, NOTES & LANDSCAPE DRAWINGS.
- SP17 PROVIDE NEW BIKE RACKS. REFER TO PLAN DETAILS, NOTES & LANDSCAPE DRAWINGS.
- SP18 PROVIDE NEW BIKE RACKS. REFER TO PLAN DETAILS, NOTES & LANDSCAPE DRAWINGS.
- SP19 PROVIDE NEW BIKE RACKS. REFER TO PLAN DETAILS, NOTES & LANDSCAPE DRAWINGS.
- SP20 PROVIDE NEW BIKE RACKS. REFER TO PLAN DETAILS, NOTES & LANDSCAPE DRAWINGS.
- SP21 PROVIDE NEW BIKE RACKS. REFER TO PLAN DETAILS, NOTES & LANDSCAPE DRAWINGS.
- SP22 PROVIDE NEW BIKE RACKS. REFER TO PLAN DETAILS, NOTES & LANDSCAPE DRAWINGS.
- SP23 PROVIDE NEW BIKE RACKS. REFER TO PLAN DETAILS, NOTES & LANDSCAPE DRAWINGS.
- SP24 PROVIDE NEW BIKE RACKS. REFER TO PLAN DETAILS, NOTES & LANDSCAPE DRAWINGS.
- SP25 PROVIDE NEW BIKE RACKS. REFER TO PLAN DETAILS, NOTES & LANDSCAPE DRAWINGS.
- SP26 PROVIDE NEW BIKE RACKS. REFER TO PLAN DETAILS, NOTES & LANDSCAPE DRAWINGS.
- SP27 PROVIDE NEW BIKE RACKS. REFER TO PLAN DETAILS, NOTES & LANDSCAPE DRAWINGS.
- SP28 PROVIDE NEW BIKE RACKS. REFER TO PLAN DETAILS, NOTES & LANDSCAPE DRAWINGS.
- SP29 PROVIDE NEW BIKE RACKS. REFER TO PLAN DETAILS, NOTES & LANDSCAPE DRAWINGS.
- SP30 PROVIDE NEW BIKE RACKS. REFER TO PLAN DETAILS, NOTES & LANDSCAPE DRAWINGS.
- SP31 PROVIDE NEW BIKE RACKS. REFER TO PLAN DETAILS, NOTES & LANDSCAPE DRAWINGS.
- SP32 PROVIDE NEW BIKE RACKS. REFER TO PLAN DETAILS, NOTES & LANDSCAPE DRAWINGS.
- SP33 PROVIDE NEW BIKE RACKS. REFER TO PLAN DETAILS, NOTES & LANDSCAPE DRAWINGS.
- SP34 PROVIDE NEW BIKE RACKS. REFER TO PLAN DETAILS, NOTES & LANDSCAPE DRAWINGS.
- SP35 PROVIDE NEW BIKE RACKS. REFER TO PLAN DETAILS, NOTES & LANDSCAPE DRAWINGS.
- SP36 PROVIDE NEW BIKE RACKS. REFER TO PLAN DETAILS, NOTES & LANDSCAPE DRAWINGS.
- SP37 PROVIDE NEW BIKE RACKS. REFER TO PLAN DETAILS, NOTES & LANDSCAPE DRAWINGS.
- SP38 PROVIDE NEW BIKE RACKS. REFER TO PLAN DETAILS, NOTES & LANDSCAPE DRAWINGS.
- SP39 PROVIDE NEW BIKE RACKS. REFER TO PLAN DETAILS, NOTES & LANDSCAPE DRAWINGS.
- SP40 PROVIDE NEW BIKE RACKS. REFER TO PLAN DETAILS, NOTES & LANDSCAPE DRAWINGS.
- SP41 PROVIDE NEW BIKE RACKS. REFER TO PLAN DETAILS, NOTES & LANDSCAPE DRAWINGS.
- SP42 PROVIDE NEW BIKE RACKS. REFER TO PLAN DETAILS, NOTES & LANDSCAPE DRAWINGS.
- SP43 PROVIDE NEW BIKE RACKS. REFER TO PLAN DETAILS, NOTES & LANDSCAPE DRAWINGS.
- SP44 PROVIDE NEW BIKE RACKS. REFER TO PLAN DETAILS, NOTES & LANDSCAPE DRAWINGS.
- SP45 PROVIDE NEW BIKE RACKS. REFER TO PLAN DETAILS, NOTES & LANDSCAPE DRAWINGS.
- SP46 PROVIDE NEW BIKE RACKS. REFER TO PLAN DETAILS, NOTES & LANDSCAPE DRAWINGS.
- SP47 PROVIDE NEW BIKE RACKS. REFER TO PLAN DETAILS, NOTES & LANDSCAPE DRAWINGS.
- SP48 PROVIDE NEW BIKE RACKS. REFER TO PLAN DETAILS, NOTES & LANDSCAPE DRAWINGS.
- SP49 PROVIDE NEW BIKE RACKS. REFER TO PLAN DETAILS, NOTES & LANDSCAPE DRAWINGS.
- SP50 PROVIDE NEW BIKE RACKS. REFER TO PLAN DETAILS, NOTES & LANDSCAPE DRAWINGS.
- SP51 PROVIDE NEW BIKE RACKS. REFER TO PLAN DETAILS, NOTES & LANDSCAPE DRAWINGS.
- SP52 PROVIDE NEW BIKE RACKS. REFER TO PLAN DETAILS, NOTES & LANDSCAPE DRAWINGS.
- SP53 PROVIDE NEW BIKE RACKS. REFER TO PLAN DETAILS, NOTES & LANDSCAPE DRAWINGS.
- SP54 PROVIDE NEW BIKE RACKS. REFER TO PLAN DETAILS, NOTES & LANDSCAPE DRAWINGS.
- SP55 PROVIDE NEW BIKE RACKS. REFER TO PLAN DETAILS, NOTES & LANDSCAPE DRAWINGS.
- SP56 PROVIDE NEW BIKE RACKS. REFER TO PLAN DETAILS, NOTES & LANDSCAPE DRAWINGS.
- SP57 PROVIDE NEW BIKE RACKS. REFER TO PLAN DETAILS, NOTES & LANDSCAPE DRAWINGS.
- SP58 PROVIDE NEW BIKE RACKS. REFER TO PLAN DETAILS, NOTES & LANDSCAPE DRAWINGS.
- SP59 PROVIDE NEW BIKE RACKS. REFER TO PLAN DETAILS, NOTES & LANDSCAPE DRAWINGS.
- SP60 PROVIDE NEW BIKE RACKS. REFER TO PLAN DETAILS, NOTES & LANDSCAPE DRAWINGS.
- SP61 PROVIDE NEW BIKE RACKS. REFER TO PLAN DETAILS, NOTES & LANDSCAPE DRAWINGS.
- SP62 PROVIDE NEW BIKE RACKS. REFER TO PLAN DETAILS, NOTES & LANDSCAPE DRAWINGS.
- SP63 PROVIDE NEW BIKE RACKS. REFER TO PLAN DETAILS, NOTES & LANDSCAPE DRAWINGS.
- SP64 PROVIDE NEW BIKE RACKS. REFER TO PLAN DETAILS, NOTES & LANDSCAPE DRAWINGS.
- SP65 PROVIDE NEW BIKE RACKS. REFER TO PLAN DETAILS, NOTES & LANDSCAPE DRAWINGS.
- SP66 PROVIDE NEW BIKE RACKS. REFER TO PLAN DETAILS, NOTES & LANDSCAPE DRAWINGS.
- SP67 PROVIDE NEW BIKE RACKS. REFER TO PLAN DETAILS, NOTES & LANDSCAPE DRAWINGS.
- SP68 PROVIDE NEW BIKE RACKS. REFER TO PLAN DETAILS, NOTES & LANDSCAPE DRAWINGS.
- SP69 PROVIDE NEW BIKE RACKS. REFER TO PLAN DETAILS, NOTES & LANDSCAPE DRAWINGS.
- SP70 PROVIDE NEW BIKE RACKS. REFER TO PLAN DETAILS, NOTES & LANDSCAPE DRAWINGS.
- SP71 PROVIDE NEW BIKE RACKS. REFER TO PLAN DETAILS, NOTES & LANDSCAPE DRAWINGS.
- SP72 PROVIDE NEW BIKE RACKS. REFER TO PLAN DETAILS, NOTES & LANDSCAPE DRAWINGS.
- SP73 PROVIDE NEW BIKE RACKS. REFER TO PLAN DETAILS, NOTES & LANDSCAPE DRAWINGS.
- SP74 PROVIDE NEW BIKE RACKS. REFER TO PLAN DETAILS, NOTES & LANDSCAPE DRAWINGS.
- SP75 PROVIDE NEW BIKE RACKS. REFER TO PLAN DETAILS, NOTES & LANDSCAPE DRAWINGS.
- SP76 PROVIDE NEW BIKE RACKS. REFER TO PLAN DETAILS, NOTES & LANDSCAPE DRAWINGS.
- SP77 PROVIDE NEW BIKE RACKS. REFER TO PLAN DETAILS, NOTES & LANDSCAPE DRAWINGS.
- SP78 PROVIDE NEW BIKE RACKS. REFER TO PLAN DETAILS, NOTES & LANDSCAPE DRAWINGS.
- SP79 PROVIDE NEW BIKE RACKS. REFER TO PLAN DETAILS, NOTES & LANDSCAPE DRAWINGS.
- SP80 PROVIDE NEW BIKE RACKS. REFER TO PLAN DETAILS, NOTES & LANDSCAPE DRAWINGS.
- SP81 PROVIDE NEW BIKE RACKS. REFER TO PLAN DETAILS, NOTES & LANDSCAPE DRAWINGS.
- SP82 PROVIDE NEW BIKE RACKS. REFER TO PLAN DETAILS, NOTES & LANDSCAPE DRAWINGS.
- SP83 PROVIDE NEW BIKE RACKS. REFER TO PLAN DETAILS, NOTES & LANDSCAPE DRAWINGS.
- SP84 PROVIDE NEW BIKE RACKS. REFER TO PLAN DETAILS, NOTES & LANDSCAPE DRAWINGS.
- SP85 PROVIDE NEW BIKE RACKS. REFER TO PLAN DETAILS, NOTES & LANDSCAPE DRAWINGS.
- SP86 PROVIDE NEW BIKE RACKS. REFER TO PLAN DETAILS, NOTES & LANDSCAPE DRAWINGS.
- SP87 PROVIDE NEW BIKE RACKS. REFER TO PLAN DETAILS, NOTES & LANDSCAPE DRAWINGS.
- SP88 PROVIDE NEW BIKE RACKS. REFER TO PLAN DETAILS, NOTES & LANDSCAPE DRAWINGS.
- SP89 PROVIDE NEW BIKE RACKS. REFER TO PLAN DETAILS, NOTES & LANDSCAPE DRAWINGS.
- SP90 PROVIDE NEW BIKE RACKS. REFER TO PLAN DETAILS, NOTES & LANDSCAPE DRAWINGS.
- SP91 PROVIDE NEW BIKE RACKS. REFER TO PLAN DETAILS, NOTES & LANDSCAPE DRAWINGS.
- SP92 PROVIDE NEW BIKE RACKS. REFER TO PLAN DETAILS, NOTES & LANDSCAPE DRAWINGS.
- SP93 PROVIDE NEW BIKE RACKS. REFER TO PLAN DETAILS, NOTES & LANDSCAPE DRAWINGS.
- SP94 PROVIDE NEW BIKE RACKS. REFER TO PLAN DETAILS, NOTES & LANDSCAPE DRAWINGS.
- SP95 PROVIDE NEW BIKE RACKS. REFER TO PLAN DETAILS, NOTES & LANDSCAPE DRAWINGS.
- SP96 PROVIDE NEW BIKE RACKS. REFER TO PLAN DETAILS, NOTES & LANDSCAPE DRAWINGS.
- SP97 PROVIDE NEW BIKE RACKS. REFER TO PLAN DETAILS, NOTES & LANDSCAPE DRAWINGS.
- SP98 PROVIDE NEW BIKE RACKS. REFER TO PLAN DETAILS, NOTES & LANDSCAPE DRAWINGS.
- SP99 PROVIDE NEW BIKE RACKS. REFER TO PLAN DETAILS, NOTES & LANDSCAPE DRAWINGS.
- SP100 PROVIDE NEW BIKE RACKS. REFER TO PLAN DETAILS, NOTES & LANDSCAPE DRAWINGS.

PROJECT NUMBER & PROJECT NAME
24-0353 - 15(17) OBLATS AVENUE, OTTAWA

SHEET NAME
SITE PLAN

DATE / TIME STAMP
2025-12-02 9:58:34 AM

APPROVED BY
AC

CHECKED BY
PK, KG, JM

DRAWN BY
VT, VJ, KB

SCALE
As Indicated

SHEET NUMBER
A201

SHEET SIZE - ARCH E (914 X 1219 2mm) (36" X 48")