

TOPOGRAPHIC PLAN OF SURVEY OF  
**LOT 1539 AND PART OF LOT 1537**  
**REGISTERED PLAN 157**  
**CITY OF OTTAWA**  
 Surveyed by Annis, O'Sullivan, Vollebek Ltd.

Scale 1 : 150  
 6 4.5 3.0 1.5 0 3 6 Metres

**Metric**  
 DISTANCES SHOWN ON THIS PLAN ARE IN METRES AND  
 CAN BE CONVERTED TO FEET BY DIVIDING BY 0.3048

**Surveyor's Certificate**

- I CERTIFY THAT:
1. This survey and plan are correct and in accordance with the Surveys Act and the Surveyors Act and the regulations made under them.
  2. The survey was completed on the 5th day of February, 2021.

February 23, 2021  
 Date  
  
 Richard R. Gauthier  
 Ontario Land Surveyor

**Notes & Legend**

Denotes	
	Survey Monument Planted
	Survey Monument Found
SSIB	Short Standard Iron Bar
IB	Iron Bar
CC	Cut Cross
CP	Concrete Pin
PB	Plastic Bar
(WIT)	Witness
Meos.	Measured
(AOG)	Annis, O'Sullivan, Vollebek Ltd.
(PI)	Registered Plan 157
(P2)	Plan 4R-30448
(P3)	Ottawa-Carleton Condominium Plan No. 446
(P4)	(857) Plan dated April 27, 1998
(P5)	(1692) Plan dated November 30, 2004
	Deciduous Tree
	Catch Basin
	Fire Hydrant
	Water Valve
	Maintenance Hole (Storm Sewer)
	Maintenance Hole (Sanitary)
	Underground Storm Sewer
	Overhead Wires
	Top of Grate
	Gas Meter
	Bollard
	Bike Rack
	Chain Link Fence
	Board Fence
	Concrete Sidewalk
	Utility Pole
	Anchor
	Air Conditioner
	Diameter
	Location of Elevations
	Top of Concrete Curb and Retaining Wall Elevation
	Centreline
	Property Line

Bearings are grid, derived from Can-Net 2016 Real Time Network GPS observations, and are referred to the Central Meridian of MTM Zone 9 (76°30' West Longitude) NAD-83 (original).

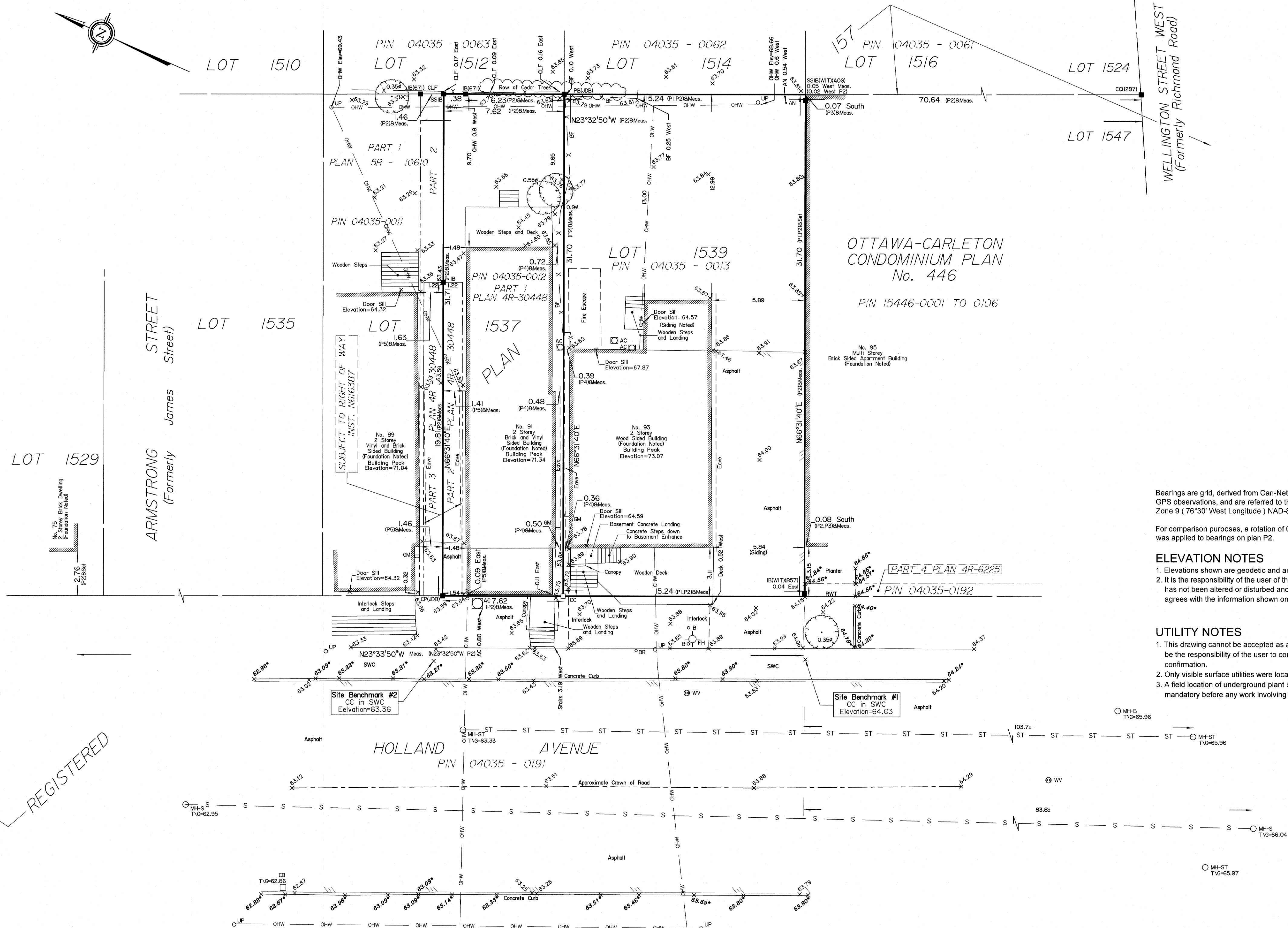
For comparison purposes, a rotation of 0°01'20" counter clockwise was applied to bearings on plan P2.

**ELEVATION NOTES**

1. Elevations shown are geodetic and are referred to the CGVD28 geodetic datum.
2. It is the responsibility of the user of this information to verify that the job benchmark has not been altered or disturbed and that its relative elevation and description agrees with the information shown on this drawing.


**UTILITY NOTES**

1. This drawing cannot be accepted as acknowledging all of the utilities and it will be the responsibility of the user to contact the respective utility authorities for confirmation.
2. Only visible surface utilities were located.
3. A field location of underground plant by the pertinent utility authority is mandatory before any work involving breaking ground, probing, excavating etc.



REGISTERED

ASSOCIATION OF ONTARIO  
 LAND SURVEYORS  
 PLAN SUBMISSION FORM  
**2165233**



THIS PLAN IS NOT VALID UNLESS  
 IT IS AN EMBOSSED ORIGINAL  
 COPY ISSUED BY THE SURVEYOR  
 In accordance with  
 Regulation 1026, Section 29 (3).

© Annis, O'Sullivan, Vollebek Ltd. 2021. THIS PLAN IS PROTECTED BY COPYRIGHT.

**ANNIS, O'SULLIVAN, VOLLEBEK LTD.**  
 14 Concourse Gate, Suite 500  
 Nepean, Ont. K2E 7S6  
 Phone: (613) 727-0850 / Fax: (613) 727-1079  
 Email: nepean@aosvltd.com

Ontario  
 Land Surveyors Job No. 20990-21 Nicholson, P.L. 1537, 1539, P.L. 157, T.F.