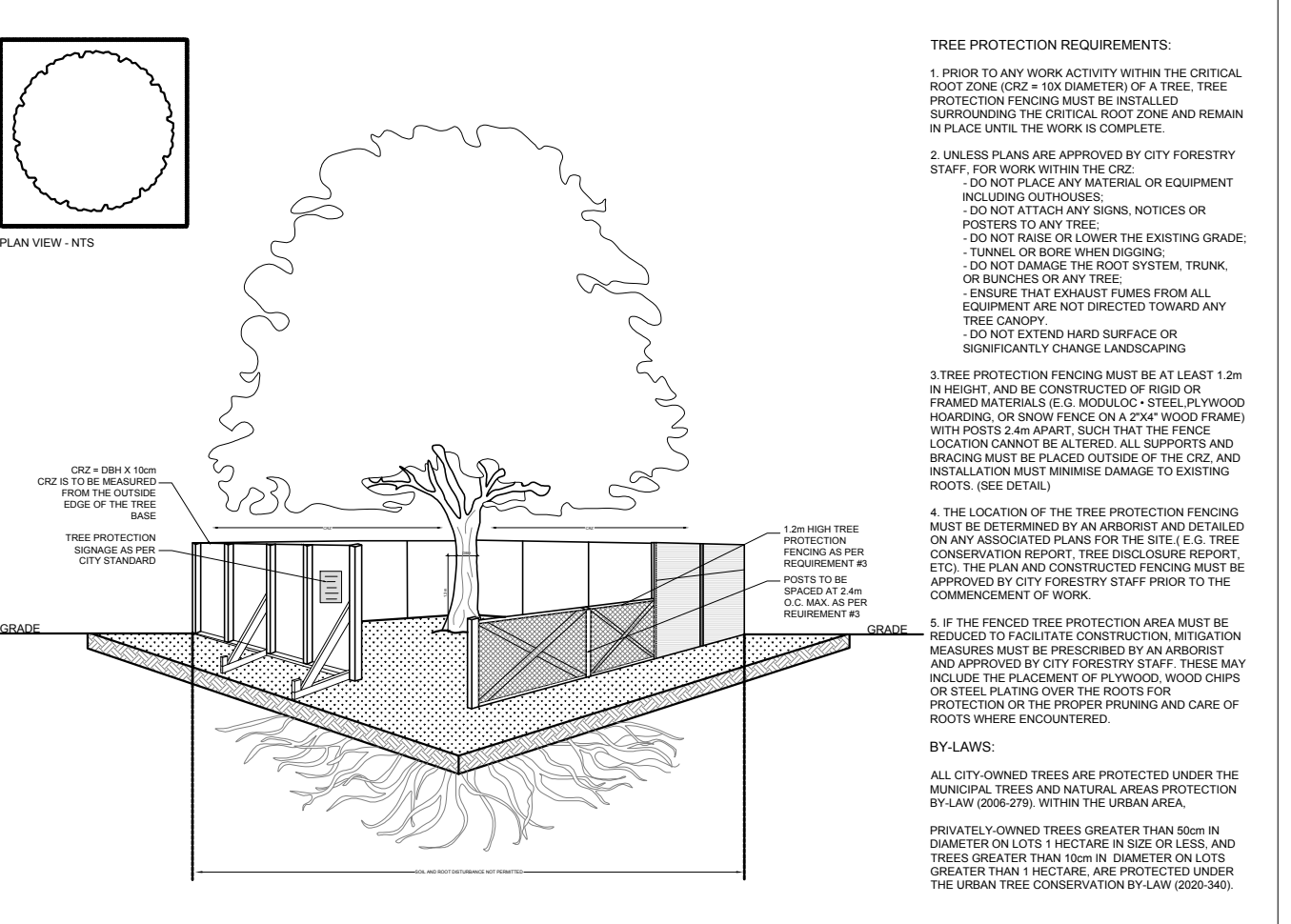


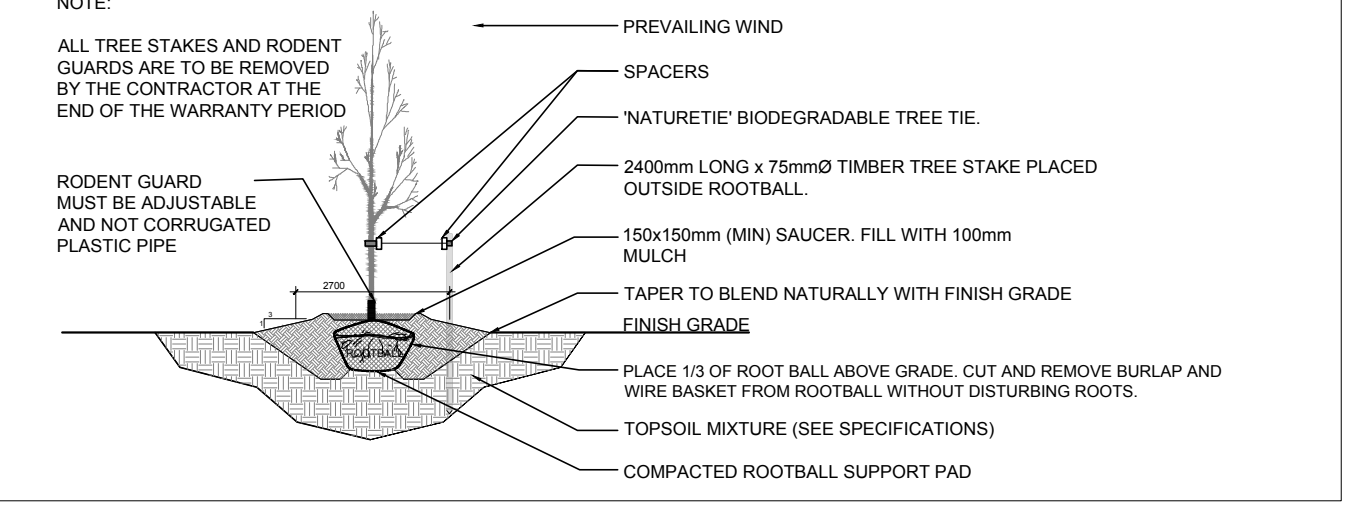
EXISTING TREE LIST							
KEY	QTY	BOTANICAL NAME	COMMON NAME	SIZE	CONDITION	CRITICAL ROOT ZONE	ACTION
1	1	<i>Ulmus americana</i>	American Elm	140mm DBH	DEAD	1400mm	To remain
2	1	<i>Ulmus pumila</i>	Siberian Elm	160mm DBH	GOOD	1600mm	To remain
3	1	<i>Acer negundo</i>	Manitoba Maple	200mm DBH	GOOD	2000mm	To be removed
4	1	<i>Ulmus pumila</i>	Siberian Elm	310mm DBH	GOOD	3100mm	To be removed
5	1	<i>Ulmus pumila</i>	Siberian Elm	410mm DBH	GOOD	4100mm	To be removed
6	1	<i>Ulmus pumila</i>	Siberian Elm	320mm DBH	GOOD	3200mm	To be removed
7	1	<i>Acer negundo</i>	Manitoba Maple	500mm DBH	FAIR	5000mm	To remain
8	1	<i>Ulmus americana</i>	American Elm	500mm DBH	FAIR	5000mm	To remain
9	1	<i>Acer negundo</i>	Manitoba Maple	400mm DBH	GOOD	4000mm	To remain
10	1	<i>Acer negundo</i>	Manitoba Maple	350mm DBH	FAIR	3500mm	To remain
11	1	<i>Acer platanoides</i>	Norway Maple	200mm DBH	GOOD	2000mm	To remain
12	1	<i>Acer platanoides</i>	Norway Maple	150mm DBH	GOOD	1500mm	To remain
13	1	<i>Acer platanoides</i>	Norway Maple	450mm DBH	GOOD	4500mm	To remain
14	1	<i>Acer platanoides</i>	Norway Maple	200mm DBH	GOOD	2000mm	To remain
15	1	<i>Acer platanoides</i> 'Crimson King'	Crimson King Maple	200mm DBH	GOOD	2000mm	To be removed

PROPOSED PLANT LIST						
KEY	QTY	BOTANICAL NAME	COMMON NAME	SIZE	CONDITION	SPACING
DECIDUOUS TREES						
AC	3	<i>Amelanchier canadensis</i>	Shadblow Serviceberry	50mm cal.	B&B	
AG	1	<i>Acer ginnala</i>	Amur Maple	50mm cal.	B&B	
AF	1	<i>Acer x freemanii</i>	Freeman's Maple	50mm cal.	B&B	
CO	1	<i>Celtis occidentalis</i>	Hackberry	50mm cal.	B&B	
SR	5	<i>Syringa reticulata</i>	Japanese Tree Lilac	50mm cal.	B&B	
SHRUBS						
AH	3	<i>Hydrangea arborescens</i> 'Annabelle'	Annabelle Hydrangea	1 gallon pot	POTTED	
RA	65	<i>Ribes alpinum</i>	Alpine Currant	600mm ht.	POTTED	
RR	42	<i>Rosa rugosa</i>	Rugosa Rose	600mm ht.	POTTED	
SS	40	<i>Sorbaria sorbifolia</i>	Ural False Spirea	600mm ht.	POTTED	
ORNAMENTAL GRASSES						
BL	42	<i>Leymus arenarius</i> 'Blue Dune'	Blue Lyme Grass	250mm pot.	POTTED	
KF	3	<i>Calamagrostis</i> 'Karl Foerster'	Feather Reed Grass	250mm pot.	POTTED	



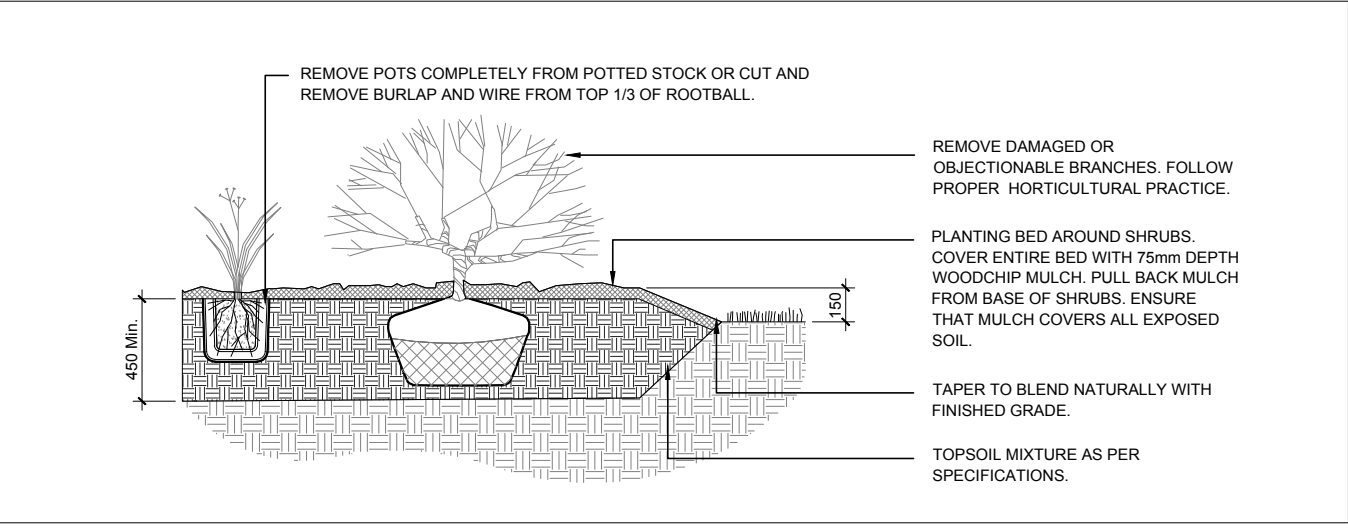
## 2 TREE PROTECTION FENCE

SCALE: NTS



## 3 DECIDUOUS TREE PLANTING

SCALE: NTS



## 4 SHRUB / ORNAMENTAL GRASS PLANTING

SCALE: NTS

## GENERAL NOTES:

- IT IS THE RESPONSIBILITY OF THE APPROPRIATE CONTRACTOR OR OFFICIAL TO REPORT ANY ERRORS, OMISSIONS OR DISCREPANCIES ON THIS PLAN WITH ACTUAL SITE CONDITIONS TO THE LANDSCAPE ARCHITECT BEFORE PROCEEDING WITH CONSTRUCTION.
- THE CONTRACTOR IS TO NOTIFY ALL UTILITY COMPANIES AND AUTHORITIES PRIOR TO ANY EXCAVATION AND ASCERTAIN LOCATIONS OF UNDERGROUND SERVICES.
- THE CONTRACTOR IS TO REINSTATE ALL AREAS AND ITEMS DAMAGED AS A RESULT OF CONSTRUCTION ACTIVITY.
- THE CONTRACTOR IS TO COMPLY WITH ALL PERTINENT CODES AND BY-LAWS.
- THE CONTRACTOR IS TO MAINTAIN A POSITIVE SURFACE RUN-OFF THROUGHOUT THE ENTIRE CONSTRUCTION PERIOD.
- THE LANDSCAPE ARCHITECT IS NOT RESPONSIBLE FOR SUBSURFACE CONDITIONS.
- THE CONTRACTOR IS TO IDENTIFY ALL EXISTING TREES TO REMAIN ON SITE WITH THE LANDSCAPE ARCHITECT PRIOR TO CONSTRUCTION.
- THE CONTRACTOR IS TO STAKE THE PROPOSED LOCATION OF ALL PLANT MATERIAL IN CONJUNCTION WITH THE LANDSCAPE ARCHITECT PRIOR TO EXCAVATION.
- MINIMUM DISTANCES FOR SELECTED DECIDUOUS TREES ARE AS FOLLOWS:
  - BUILDING FOUNDATIONS - 7.5M
  - SIDEWALKS - 1.5M
  - PUBLIC STREETS - 2.5M
  - UNDERGROUND INFRASTRUCTURE - 2.0M
- ALL TREES WITHIN 1M OF UNDERGROUND UTILITY TRENCHES ARE TO BE EXCAVATED BY HAND.
- REMOVE ALL PROTECTIVE WRAPPING FROM TREE TRUNKS AFTER INSTALLATION.
- STAKING OF TREES SHALL ONLY BE PERFORMED IF NECESSARY.
- ENSURE THAT MULCH IS PULLED BACK A MINIMUM DISTANCE OF 75MM FROM BASE OF TREE TRUNK.

**AMBASSADOR REALTY**  
185 Somerset Street West, Ottawa, ON, K2P 0J2

**CONSULTANTS**  
**Architects:**  
Address: 201-1339 Wellington Street West, Ottawa, ON, K1Y 3B8  
Phone Number: (613) 725-2234  
**DCA**  
A GROUP OF ARCHITECTS  
14 Concorde Circle, Suite 200  
Nepean, Ont. K2E 7S8  
Phone: (613) 727-0550 Fax: (613) 727-1079  
Email: nepean@dca.ca  
ottawa@dca.ca

**Surveyors:**  
**ANNIS, O'SULLIVAN, VOLLEBEKK LTD.**  
14 Concorde Circle, Suite 200  
Nepean, Ont. K2E 7S8  
Phone: (613) 727-0550 Fax: (613) 727-1079  
Email: nepean@annisdca.com  
ottawa@annisdca.com

- LEGEND**
- EXISTING TREE TO REMAIN
  - EXISTING TREE TO BE REMOVED
  - PROPOSED DECIDUOUS TREE
  - PROPOSED SHRUBS / ORNAMENTAL GRASSES
  - EXISTING SIDEWALK
  - PROPOSED CONCRETE
  - PROPOSED TYPE 1 PRECAST CONCRETE PAVERS
  - PROPOSED TYPE 2 PRECAST CONCRETE PAVERS
  - PROPOSED TYPE 3 PRECAST CONCRETE PAVERS
  - PROPOSED SOD
  - PROPOSED TREE PROTECTION FENCE
  - PROPOSED BUILDING OVERHANG
  - PROPERTY LINE
  - PROPOSED BARBEQUE UNITS
  - PROPOSED TABLE WITH BAR STOOL SEATING
  - PROPOSED SECTIONAL AND TABLE

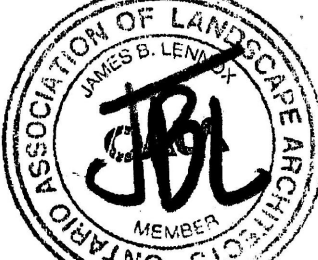
1	ISSUED FOR CITY OF OTTAWA REVIEW	08/12/2025	ML	JL
No.	Issue	Date	DR	CK

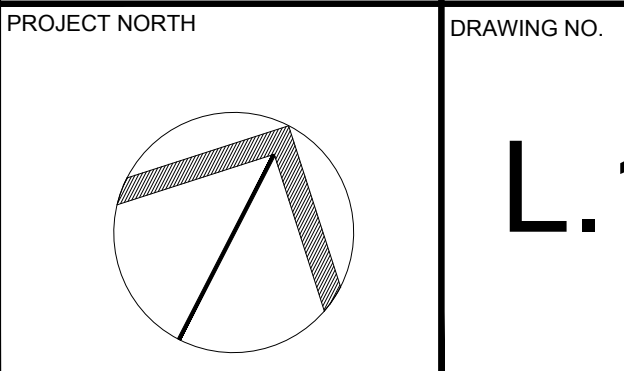
**JAMES B. LENNOX & ASSOCIATES INC.**  
**LANDSCAPE ARCHITECTS**  
3332 CARLING AVE. OTTAWA, ONTARIO K2H 5A8  
Tel: (613) 722-5168 Fax: (866) 343-3942

**PROJECT**  
**PROPOSED 28 STOREY APARTMENT BUILDING**

**1296-1300 CARLING AVENUE, OTTAWA ON**

**DRAWING**  
**TREE CONSERVATION REPORT AND LANDSCAPE PLAN**

STAMP	SCALE AS SHOWN
	START DATE OCTOBER, 2025
	PROJECT NO. 25DCA2556



PLOT SIZE ARCH-D