

GENERAL NOTES:

- THE CONTRACTOR IS RESPONSIBLE FOR FAMILIARIZING THEMSELVES WITH LIMITS OF CONSTRUCTION PRIOR TO THE COMMENCEMENT OF ANY WORK ON THE SITE. THE CONTRACTOR IS TO CONTACT CONTRACT ADMINISTRATOR IN UNCERTAINTY.
- THE CONTRACTOR SHALL BE RESPONSIBLE FOR THE LOCATION AND SHARING OF ALL UTILITIES PRIOR TO WORK COMMENCING ON THE SITE. CONTRACTOR SHALL LOCATE PLANT MATERIAL IN ACCORDANCE WITH THE CITY OF OTTAWA'S TREE PROTECTION BY-LAW.
- CONTRACTOR IS RESPONSIBLE FOR DAMAGE TO ALL UNDERGROUND SERVICES INCLUDING LIGHT SENSITIVE SERVICES NOT STATED OUT BY GAS, HYDRO, BELL AND CABLE.
- IF IT IS THE RESPONSIBILITY OF THE CONTRACTOR TO CALL A PRIVATE LOCATING COMPANY AND THE COSTS RELATING TO ALL SERVICES NOT STATED OUT BY GAS, HYDRO, BELL AND CABLE.
- THE CONTRACTOR SHALL VISIT THE SITE TO CONFIRM SITE CONDITIONS PRIOR TO SUBMITTING BID.
- THE CONTRACTOR SHALL REMOVE ALL DEBRIS, GARBAGE AND SURPLUS MATERIALS FROM THE SITE AT THE END OF EACH DAY. THE SITE IS TO BE KEPT CLEAN.
- UPON FINAL COMPLETION OF THE PROJECT, ALL WORKMANSHIP AND MATERIALS ARE TO BE GUARANTEED FOR ONE (1) YEAR, UNLESS NOTED OTHERWISE. ALL WORKMANSHIP IS TO BE GUARANTEED TO THE STANDARDS OF THE ONTARIO LANDSCAPE CONTRACTORS ASSOCIATION.
- ALL CONSTRUCTION TO BE CARRIED OUT IN ACCORDANCE WITH THE MOST CURRENT DESIGN STANDARDS, CRITERIA, AND SPECIFICATIONS FROM THE ONTARIO BUILDING CODE, THE ONTARIO PROFESSIONAL STANDARDS BOARD, THE ONTARIO PROFESSIONAL STANDARD SPECIFICATION AND LANDSCAPE ONTARIO.
- CONTRACTOR TO ENSURE PROPER DEPTH OF EXCAVATIONS TO ACCOMMODATE HARD SURFACE AND LANDSCAPING AS SPECIFIED ON THESE DRAWINGS.
- TREE PRESERVATION AND MOVING TO BE REVIEWED WITH CONTRACTOR PRIOR TO START OF CONSTRUCTION.

ENVIRONMENTAL NOTES

- THE CONTRACTOR SHALL ADHERE TO SPECIAL PROVISION REQUIREMENTS FOR THE MANAGEMENT OF ON-SITE MATERIAL AS PER THE DRAWINGS AND SPECIAL PROVISIONS OF THE CONTRACT.
- THE CONTRACTOR SHALL ENSURE THAT ALL REASONABLE MEASURES ARE TAKEN TO LIMIT GRADING DISTURBANCE CAUSED BY HEAVY EQUIPMENT USAGE, AND THAT EROSION AND SEDIMENT CONTROLS WILL BE INSTALLED ON DISTURBED AREAS, NO ASSURANCE GRANTING AND DISTURBING EQUIPMENT SHALL BE USED BY CONSTRUCTION FORCES EXCEPT ON ACCESS ROADS.
- ALL CONSTRUCTION ACTIVITIES WITHIN THE LIMIT OF CONSTRUCTION SHALL BE EXECUTED IN SUCH A MANNER SO AS TO PREVENT THE ENTRY OF CHEMICALS, PETROLEUM PRODUCTS, DEBRIS RUBBLE, CONCRETE OR OTHER DEBRIS INTO SUBSTRANES INTO LANDSCAPE AREAS.
- THE CONTRACTOR WILL BE RESPONSIBLE FOR DAILY INSPECTION, CLEANUP, AND PROPER LABELING, STORAGE, AND DISPOSAL OF ALL REFUSE AND DEBRIS PRODUCED BY OPERATIONS AND EMPLOYEES. SEPARATE REUSE COLLECTING FACILITIES WILL BE REQUIRED. ONLY THOSE DISPOSAL AREAS DESIGNATED BY THE OWNER/CONTRACT ADMINISTRATOR SHALL BE USED. DISPOSAL CONTAINERS SUCH AS DUMPSTERS OR ROLL-OFF CONTAINERS SHALL BE OBTAINED FROM A PROPER WASTE DISPOSAL CONTRACTOR.
- CONTRACTOR SHALL VISIT SITE PRIOR TO THE START OF CONSTRUCTION AND PROVIDE TO THE CONTRACT ADMINISTRATOR TO IDENTIFY ANY CHANGING BRANCHES THAT WILL REQUIRE PRUNING TO PERMIT VEHICULAR ACCESS AND ABOVE LANDSCAPE ARCHITECT/CONTRACT ADMINISTRATOR ALL PRUNING SHALL BE AS PER CURRENT ISA (INTERNATIONAL SOCIETY OF ARBORICULTURE) STANDARDS.

SITE PREPARATION

- THE CONTRACTOR SHALL ENSURE POSITIVE DRAINAGE OF ALL AREAS WITHIN THE LIMIT OF THE CONTRACT.
- CONTRACTOR TO WORK WITHIN GUIDELINES FOR THE CITY'S NOISE BY-LAW.
- ANY REFUSE, GARBAGE, OR OTHER DEBRIS ON SITE MUST BE REMOVED AND DEPOSITED OFF-SITE AT THE EXPENSE OF THE CONTRACTOR.
- AREAS TO BE SPOOLED SHALL BE BACKFILLED WITH NATIVE SUITABLE SOIL TO 100MM BELOW FINISHED GRADE TO ALLOW FOR TOPSOIL INSTALLATION.
- ABSOLUTELY NO STORAGE OF EQUIPMENT OR MATERIALS OUTSIDE OF CONSTRUCTION FENCING.

SEDIMENTATION CONTROL

- CONTRACTOR SHALL BE RESPONSIBLE FOR MAINTAINING ALL SEDIMENTATION CONTROL DEVICES IN GOOD WORKING ORDER AT ALL TIMES. CONTRACTOR SHALL INSPECT SUCH DEVICES DAILY AND AFTER EACH RAINFALL EVENT.

UNDERGROUND SERVICES AND UTILITIES

- UTILITIES MUST BE LOCATED BY THE UTILITY COMPANIES BEFORE CONSTRUCTION BEGINS. CONTRACTOR IS RESPONSIBLE FOR ANY DAMAGES WHICH OCCUR TO EXISTING SERVICES DURING CONSTRUCTION.
- CONTRACTOR IS RESPONSIBLE FOR LOCATING ALL EXISTING UTILITIES ON THE SITE.
- CONTRACTOR MUST CHECK & VERIFY ALL DIMENSIONS AND CONDITIONS ON THE JOB, REPORTING ALL DISCREPANCIES TO THE CONTRACT ADMINISTRATOR BEFORE PROCEEDING WITH THE WORK.
- CONTRACTOR IS RESPONSIBLE FOR ANY DAMAGE CAUSED TO EXISTING SERVICES WHEN EXCAVATING.

CLIENT
FORUM ASSET MANAGEMENT
 EAST PODIUM, 2ND FLOOR
 151 BAY STREET
 TORONTO, ON, M5J 2T3
 T. 416-947-0289
 WWW.FORUM.COM

ARCHITECTURE
lemay
 Lemay CO Inc
 SUITE 401
 60 LADELADE ST E
 TORONTO, ON M5C 3E4
 T. 647-254-3185
 www.lemay.com

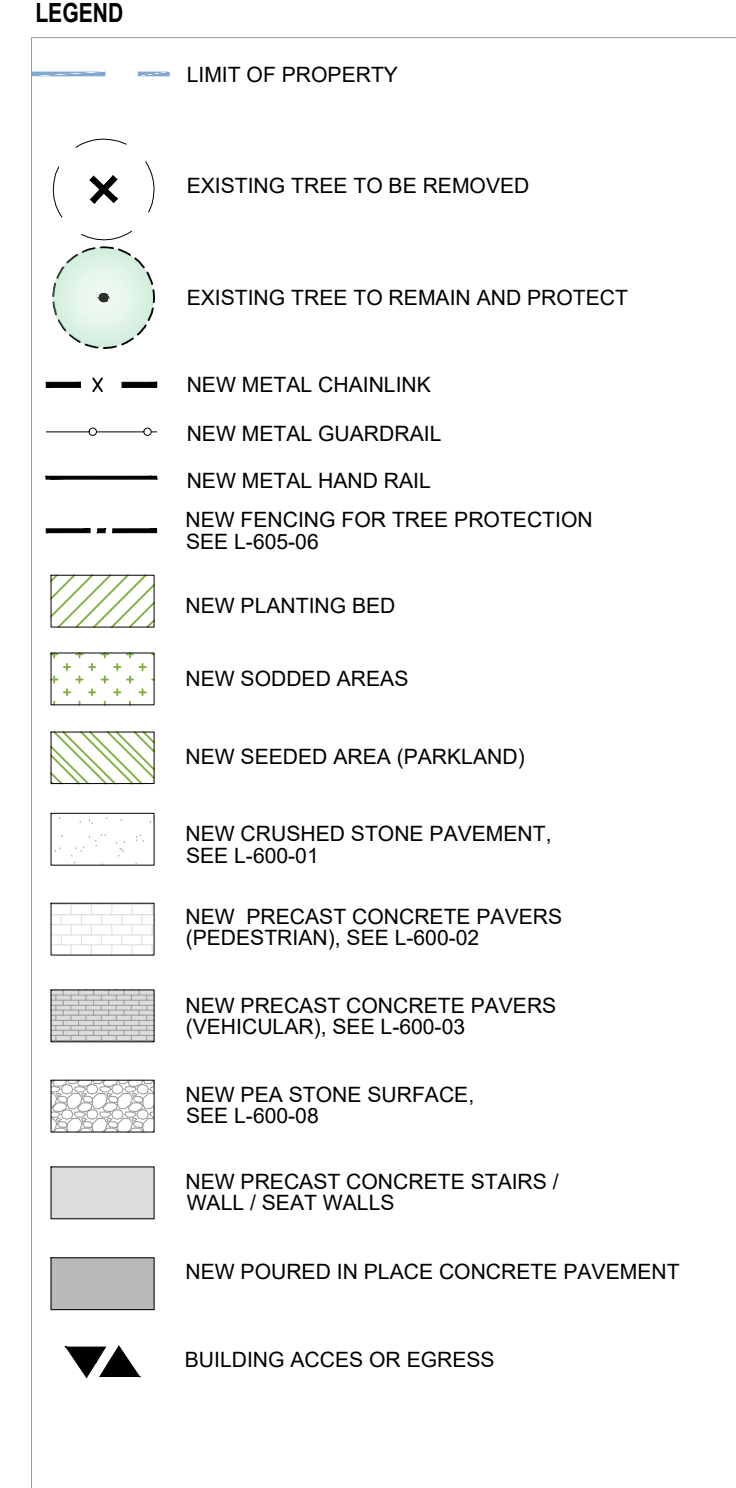
MECHANICAL & ELECTRICAL STRUCTURE
DJM Structural Engineering **Jain Sustainability**
 110 2nd Floor
 333 Preston Street 7405 East Dewart Crescent
 Ottawa, ON K1S 2M4 Mississauga, ON L4N 6P8
 T. 613-651-8490 T. 905-285-9900
 www.djmstructural.ca www.jainsustainability.com

LANDSCAPE CIVIL
Lemay
 3500 300
 Saint-Jacques Street 2611 Quatrevois Drive
 Montreal, QC H3C 1H2 Ottawa, ON K2E 9C2
 T. 514-822-5101 T. 613-229-2800
 www.lemay.com www.wspgroup.com

SURVEYOR
Aotis, O'Sullivan, Vollebæk Ltd.
 Suite 500
 14 Concourse Gate
 Nepean, ON K2E 7S6
 T. 613-727-0850
 www.aotv.com

NOTES

- CONTRACTOR TO CHECK AND VERIFY ALL DIMENSIONS PRIOR TO COMMENCING WORK.
- CONTRACTOR TO COMPLY WITH ALL BUILDING CODES, REGULATIONS, AND ORDINANCES OF AUTHORITIES HAVING JURISDICTION.
- THIS DRAWING IS NOT TO BE USED FOR CONSTRUCTION BY LEMAY ARCHITECTURE AND DESIGN LTD.
- DO NOT SCALE DRAWING.
- THIS DRAWING MAY NOT BE COPIED, ALTERED, OR DISTRIBUTED IN WHOLE OR IN PART WITHOUT WRITTEN PERMISSION. COPYRIGHT © LEMAY ARCHITECTURE AND DESIGN LTD.
- REPORT ANY ERRORS AND OMISSIONS TO THE CONSULTANT IMMEDIATELY BEFORE COMMENCING WORK.
- DEVIATIONS FROM THE CONTRACT DOCUMENTS WITHOUT WRITTEN APPROVAL FROM CONSULTANT ARE SUBJECT TO CORRECTIONS AT CONTRACTOR EXPENSE.
- DIMENSIONS ARE IN METRIC (MM) UNLESS NOTED OTHERWISE.



EXISTING TREE LIST

KEY	QTY	BOTANICAL NAME	COMMON NAME	SIZE	CONDITION	REMARKS	OWNERSHIP
AG	1	Acer ginnala	Amur Maple	4x200mm DBH	Good	To remain	102 Springhurst Ave
AP1	4	Acer platanoides	Norway Maple	100-200mm DBH	Fair-Good-some girdling	To be removed	15 Oblats Ave
AP2	2	Acer platanoides	Norway Maple	750-800mm DBH	Poor-Fair	To be removed	15 Oblats Ave
AP3	1	Acer platanoides	Norway Maple	150mm DBH	Good	To remain	102 Springhurst Ave
AR1	1	Acer rubrum	Red Maple	100mm DBH	Poor	To be removed	15 Oblats Ave
AR2	1	Acer rubrum	Red Maple	400mm DBH	Poor	To remain	15 Oblats Ave
AS1	1	Acer saccharinum 'Laciniata'	Cutleaf Silver Maple	100mm DBH	Good	To remain	15 Oblats Ave
AS2	2	Acer saccharinum 'Laciniata'	Cutleaf Silver Maple	1000-1500mm DBH	Fair	To remain	15 Oblats Ave
MA1	1	Malus spp.	Crabapple	200mm DBH	Good	To be removed	15 Oblats Ave
MA2	1	Malus spp.	Crabapple	150mm DBH	Good	To remain	102 Springhurst Ave
MG	1	Magnolia spp.	Magnolia	100mm DBH	Good	To remain	102 Springhurst Ave
RC	2	Rhamnus cathartica	Common Buckthorn	100-200 DBH	Good	To remain	102 Springhurst Ave
SH	2	Sorbus x hybrida	Oakleaf Mountain Ash	200-250mm DBH	Fair-60% canopy	To be removed	15 Oblats Ave
SR	1	Syringa reticulata	Japanese Tree Lilac	100mm DBH	Good	To be removed	15 Oblats Ave
SV	5	Syringa vulgaris	Common Purple Lilac	50-100mm DBH	Good	To be removed	15 Oblats Ave
UA	2	Ulmus americana	American Elm	100mm DBH	Good	To be removed	15 Oblats Ave
CONIFEROUS TREES							
PG	3	Picea glauca	White Spruce	200mm DBH	Good	To be removed	15 Oblats Ave

ISSUE

NO.	DATE	DESCRIPTION
1	2024-09-13	ISSUED FOR CLASS C ESTIMATE
2	2024-09-13	ISSUED FOR SPA RESUBMISSION
3	2024-12-20	ISSUED FOR 90% CD
4	2025-03-07	ISSUED FOR BUILDING PERMIT
5	2025-05-15	RESUBMITTED FOR BUILDING PERMIT
6	2025-09-26	ISSUED FOR CONSULTATION
7	2025-11-28	ISSUED FOR VE
8	2025-12-02	ISSUED FOR VE REVISED

81
 L100
 TREE CONSERVATION REPORT PLAN
 SCALE 1:150

SEALS

PROJECT NUMBER & PROJECT NAME
24-0353 - 15(17) OBLATS AVENUE, OTTAWA

SHEET NAME
TREE CONSERVATION REPORT

DATE / TIME STAMP
12/02/2025 11:46:52 AM

APPROVED BY
MYLENE CARREAU

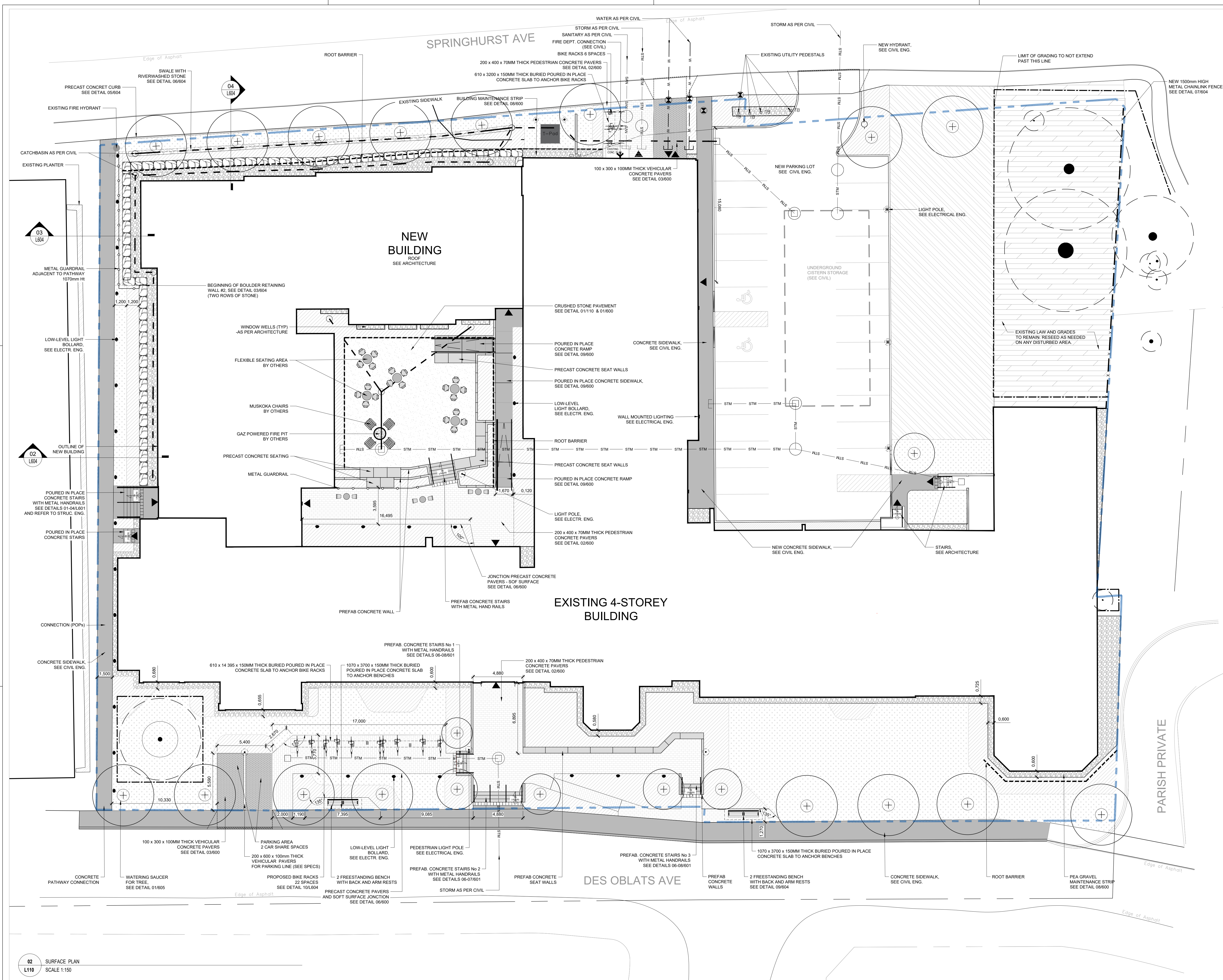
CHECKED BY
MYLENE CARREAU

DRAWN BY
TAN AU CA NGUYEN

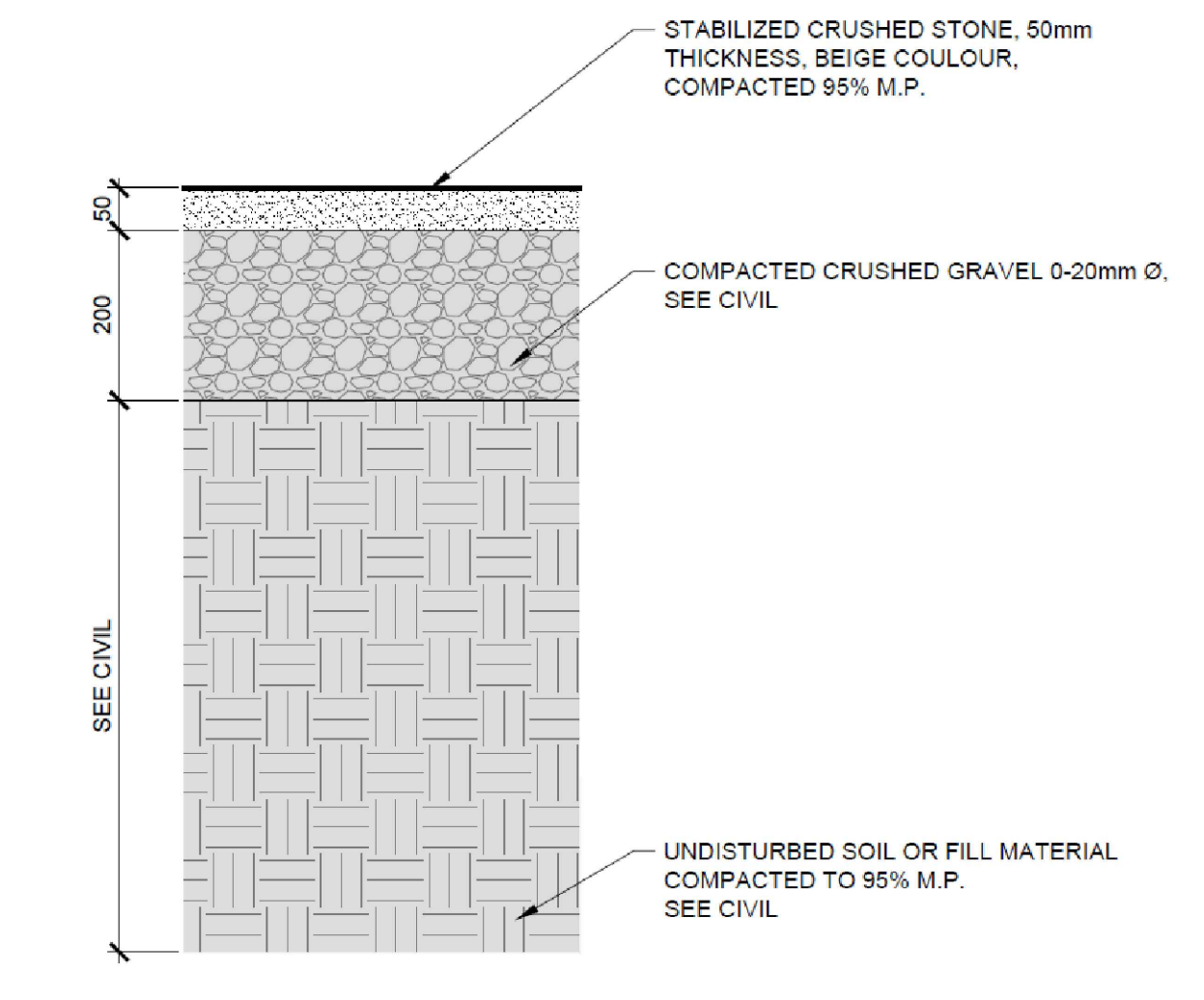
SCALE
L.100

SHEET NUMBER
L.100

DATE / TIME STAMP
12/02/2025 11:46:52 AM



02 SURFACE PLAN
L110
SCALE 1:150



01 CRUSHED STONE PAVEMENT
TYPE
ECHELLE 1:10

CLIENT
FORUM ASSET MANAGEMENT
EAST PODIUM, 2ND FLOOR
151 BAY STREET
TORONTO, ON, M5J 2T3
T. 416-947-0289
WWW.FORUM.COM

ARCHITECTURE
lemay
Lemay CO Inc
SUITE 401
62 COLLEGE ST E
TORONTO, ON M5C 3E4
T. 647-254-3185
WWW.LEMAY.COM

MECHANICAL & ELECTRICAL
STRUCTURAL
D-M Structural Engineering
110
333 Preston Street
Ottawa, ON K1S 2M4
T. 613-651-8490
WWW.DMSSTRUCTURAL.COM

Jain Sustainability
2nd Floor
7405 East Danbro Crescent
Mississauga, ON, L4N 6P8
T. 905-285-9900
WWW.JAINCONSULTANTS.COM

LANDSCAPE
Lemay
3500
Saint-Jacques Street
Montreal, QC H3C 1H2
T. 514-832-5101
WWW.LEMAY.COM

CIVIL
WSP
300
2611 Queenview Drive
Ottawa, ON K2B 9C2
T. 613-229-2800
WWW.ENRGROUP.COM

SURVEYOR
Aeris, O'Sullivan, Vollebæk Ltd.
Suite 500
14 Concourse Gate
Nepean, ON, K2E 7S6
T. 613-727-6850
WWW.AERIS.COM

- NOTES
- CONTRACTOR TO CHECK AND VERIFY ALL DIMENSIONS PRIOR TO COMMENCING WORK.
 - CONTRACTOR TO COMPLY WITH ALL BUILDING CODES, REGULATIONS, AND ORDINANCES OF AUTHORITIES HAVING JURISDICTION.
 - THIS DRAWING IS NOT TO BE USED FOR CONSTRUCTION UNLESS STAMPED ISSUED FOR CONSTRUCTION BY LEMAY ARCHITECTURE AND DESIGN LTD.
 - DO NOT SCALE DRAWING.
 - THIS DRAWING MAY NOT BE COPIED, ALTERED, OR DISTRIBUTED IN WHOLE OR IN PART WITHOUT WRITTEN PERMISSION. COPYRIGHT © LEMAY ARCHITECTURE AND DESIGN LTD.
 - REPORT ANY ERRORS AND OMISSIONS TO THE CONSULTANT IMMEDIATELY BEFORE COMMENCING WORK.
 - DEVIATIONS FROM THE CONTRACT DOCUMENTS WITHOUT WRITTEN APPROVAL FROM CONSULTANT ARE SUBJECT TO CORRECTIONS AT CONTRACTOR EXPENSE.
 - DIMENSIONS ARE IN METRIC (MM) UNLESS NOTED OTHERWISE.



ISSUE

#	DATE	DESCRIPTION
9	2025-12-02	ISSUED FOR VE REVISED
8	2025-11-28	ISSUED FOR VE
7	2025-09-26	ISSUED FOR CONSOLIDATION
6	2025-05-15	REVISED FOR BUILDING PERMIT
5	2025-05-02	ISSUED FOR TENDER REVIEW
4	2025-03-07	ISSUED FOR BUILDING PERMIT
3	2024-12-20	ISSUED FOR 90% CD
2	2024-09-13	ISSUED FOR CLASS C ESTIMATE
1	2024-09-06	ISSUED FOR SPA RESUBMISSION

PROJECT NUMBER & PROJECT NAME
24-0363 - 15(17) OBLATS AVENUE, OTTAWA

SHEET NAME
SURFACE PLAN AND DETAIL REFERENCE

DATE / TIME STAMP
12/02/2025 12:09:13 PM

APPROVED BY
MYLENE CARREAU

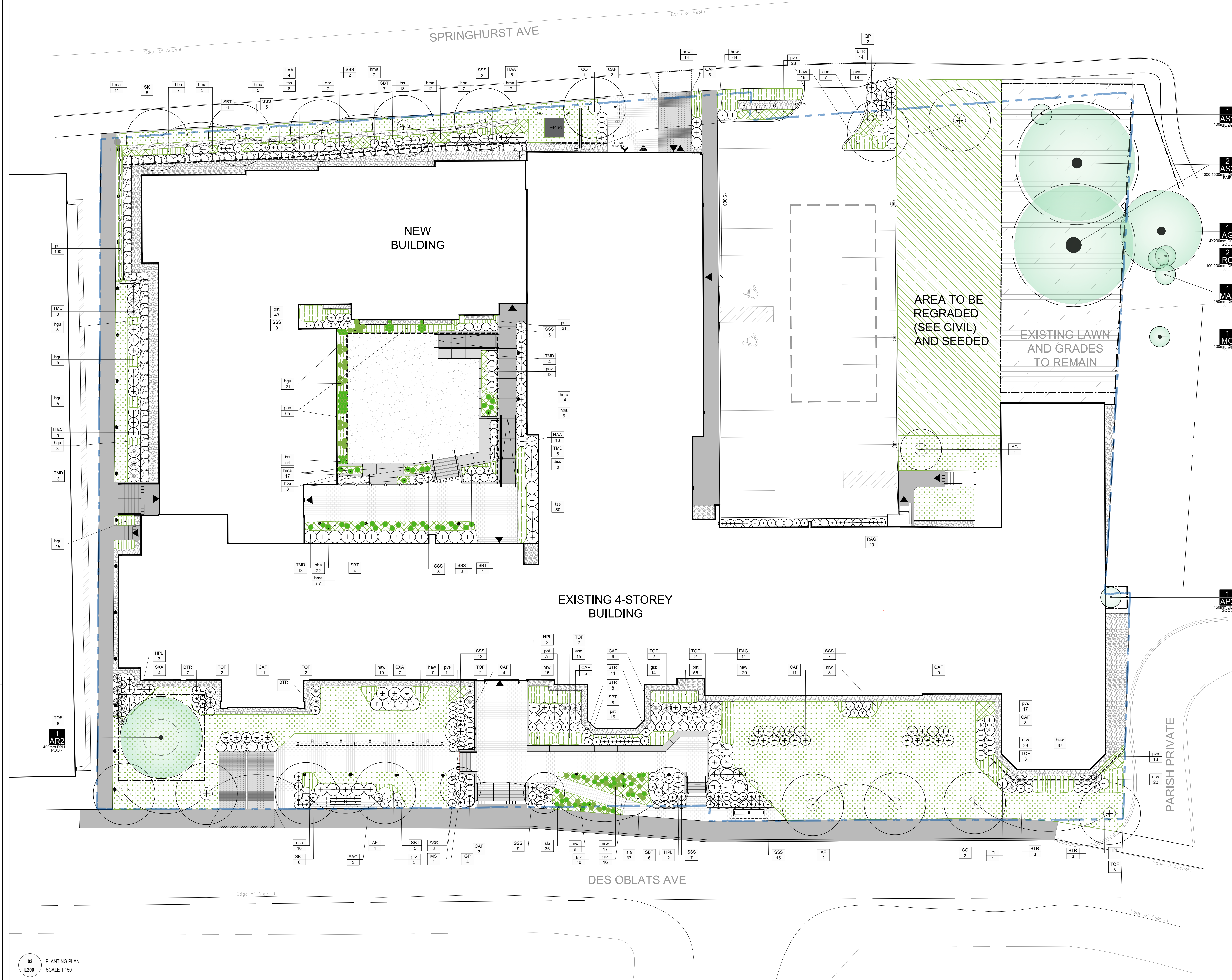
CHECKED BY
MYLENE CARREAU

DRAWN BY
TAN AU CA NGUYEN

SCALE

SHEET NUMBER
L.110

File Path: \\mlbask\Draws\724\0363_15(17) Des Oblats Ottawa\24-0363_Oblats_AR_Building_New_v02.rvt



PLANTING:

- THE LANDSCAPE PLAN HAS BEEN DEVELOPED IN CONJUNCTION WITH THE GEOTECHNICAL INVESTIGATION REPORT REVISION DATED 13TH FEBRUARY 2024. THE CONTRACTOR SHALL CONSULT WITH THE LANDSCAPING CONSULTANT FOR TREE PLANTING TRACKS AS OUTLINED IN SECTION 4.01 OF THE GEOTECHNICAL INVESTIGATION REPORT. WHERE A ROOT BARRIER IS REQUIRED OR INDICATED, IT MUST BE INSTALLED IN ACCORDANCE WITH THE GEOTECHNICAL SPECIFICATIONS.
- THE CONTRACTOR SHALL UNDERTAKE THE PLANTING AS PROPOSED IN THE DRAWINGS AND AS SPECIFIED. THE PLANTING SOIL SHALL COMPLY WITH THESE REQUIREMENTS:
- ALL PROPOSED TREES WILL BE PLANTED WITHIN 15-17 OBLATS PRIVATE LANE.
- ALL PLANTS SHALL BE NURSERY GROWN AND SPECIES BY NURSERY THAT SUPPORT SUSTAINABLE PRACTICES IN PLANT PRODUCTION.
- ANY CHANGES MODIFIED OR REPLACED BY THE CONTRACTOR IN THE CHOICE OF PLANTS SHALL BE APPROVED BY THE PROFESSIONAL OF RECORD (LANDSCAPE ARCHITECT). PROVIDE GOOD CONTROL OF THE SUPPLIER BEFORE DELIVERY TO THE SITE OF THE PLANT.
- THE CONTRACTOR SHALL NOTIFY THE LANDSCAPE ARCHITECT OF DELIVERY OF PLANT MATERIALS AT LEAST 48 HOURS IN ADVANCE OF THE DELIVERY DATE. THE CONTRACTOR SHALL SUBMIT TO THE LANDSCAPE ARCHITECT PRIOR TO ORDER OR DELIVERY TO SITE, TESTING TO BE IN ACCORDANCE WITH CONTRACT SPECIFICATIONS. PREPARED TOPSOIL SHALL BE SPREAD TOPSOIL TO THE PART BELL NOTED OTHERWISE.
- THE CONTRACTOR SHALL ENSURE THAT THE PLANTS ARE HANDLED WITH CARE SO AS NOT TO BREAK UP SPINDLING GROWS OR BRANCHES FOR TREES. IF NECESSARY, APPLY AN ANTI-TRANSPIRANT TO PREVENT DRY OUT DURING TRANSPORT. ANY PLANT DAMAGE SHALL BE REPLACED AT THE CONTRACTOR'S EXPENSE.
- STILL, ALL PLANTS SHOULD BE PROTECTED FROM SUN AND DRYING WINDS AND SHOULD BE WATERED FREQUENTLY UNTIL PLANTING.
- SUPPLY AND PLACE TOPSOIL TO A MINIMUM DEPTH OF 150MM IN SEEDING AREAS AND 450MM IN PLANTING BEDS UNLESS OTHERWISE SPECIFIED. EACH SOURCE OF TOPSOIL, IMPORTED OR NATIVE TO BE APPROVED BY LANDSCAPE ARCHITECT PRIOR TO USE. SUBMIT ANALYSIS REPORT TO THE LANDSCAPE ARCHITECT PRIOR TO ORDER OR DELIVERY TO SITE, TESTING TO BE IN ACCORDANCE WITH CONTRACT SPECIFICATIONS. PREPARED TOPSOIL SHALL BE SPREAD TOPSOIL TO THE PART BELL NOTED OTHERWISE.
- PLANTING BEDS SHOULD BE LOCATED ACCORDING TO THE DRAWINGS AND SHALL BE OF SUFFICIENT DEPTH ACCORDING TO THE SPECIFICATIONS. THE CONTRACTOR SHALL OBTAIN APPROVAL OF THE FITS AND FINISHES BY THE LANDSCAPE ARCHITECT BEFORE ANY PLANTING.
- ALL SURFACES OF PLANTING BEDS SHOULD BE COVERED WITH MULCH. MULCH SHALL BE APPLIED TO THE TRUNK OF THE TREE. CUT AND REMOVE TOP 2/3 OF THE MULCH BASKET. MULCH IS TO BE PULLED BACK FROM THE TRUNK OF THE TREE. CUT AND REMOVE TOP 2/3 OF THE MULCH BASKET. MULCH IS TO BE PULLED BACK FROM THE TRUNK OF THE TREE. MULCH IS TO BE PULLED BACK FROM THE TRUNK OF THE TREE. MULCH IS TO BE PULLED BACK FROM THE TRUNK OF THE TREE.
- PLANTS SHOULD BE WATERED AT LEAST ONCE PER DAY AFTER PLANTING AND AGAIN IN THE SAME DAY.
- ALL DECIDUOUS TREES AND SHRUBS SHALL BE PROTECTED AGAINST KODIAK WITH 230MM DIAMETER ARBORESCENT TRUNK PROTECTORS OR APPROVED EQUIVALENT INSTALLED AT THE BASE OF THE TRUNK.

MAINTENANCE NOTES:

- CONTRACTOR SHALL GUARANTEE ALL PLANT MATERIAL FOR A PERIOD OF ONE (1) FULL YEAR FROM THE DATE OF FINAL ACCEPTANCE. UNLESS LOCATED OR IDENTIFIED WHERE A TWO (2) YEAR EXTENDED WARRANTY SHALL APPLY PER CITY OF OTTAWA STANDARDS.
- ALL PLANT MATERIALS SHALL BE MAINTAINED IN THE SAME QUALITY AS THE ORIGINAL MATERIAL. PLANTS WHICH HAVE DIED DURING THE PERIOD OF WARRANTY SHALL BE REPLACED UNDER WARRANTY. PLANT MATERIAL REPLACED UNDER WARRANTY SHALL COMPLY WITH ALL SPECIFICATIONS OF THE ORIGINAL CONTRACT INCLUDING THE WARRANTY PERIOD FROM THE DATE OF REPLACEMENT PLANTING.
- MAINTENANCE MAINTENANCE SHALL BE PROVIDED. MAINTENANCE REQUIREMENTS SHALL INCLUDE ALL PROCEDURES CONSISTENT WITH PROPER BOTANICAL PRACTICES TO PROMOTE NORMAL, HEALTHY AND HEALTHY GROWTH OF ALL MATERIAL PLANTED INCLUDING SEED AND SOIL. MAINTENANCE SHALL INCLUDE BUT NOT BE LIMITED TO THE FOLLOWING:
 - REGULAR CULTRATION AND WEED CONTROL OF PLANTING BEDS AND THE PITS AND PESTICIDES OR HERBICIDES IN ACCORDANCE WITH MUNICIPAL BY-LAWS AND PROVINCIAL LEGISLATION.
 - WATER A MINIMUM OF ONCE A WEEK FOR THE FIRST FOUR WEEKS, WHEN REQUIRED THEREAFTER AND IN SUFFICIENT QUANTITIES TO SATURATE THE ROOT SYSTEM TO ENSURE SUFFICIENT MOISTURE FOR VIGOROUS PLANT GROWTH. ENSURE ADEQUATE MOISTURE IN THE ROOTBALL AT TIME OF FIRST PRUNING.
 - PRUNING, INCLUDING THE REMOVAL AND DISPOSAL OF DEAD OR BROKEN BRANCHES.
 - THE MAINTENANCE OF ALL ACCESSORIES IN GOOD CONDITION AND PROPERLY ADJUSTED INCLUDING THE REPAIR OR REPLACEMENT OF ACCESSORIES AS REQUIRED AT NO ADDITIONAL CHARGE TO THE OWNER.
- WINTER PROTECTION: NECESSARY PLANT PROTECTION SUCH AS BURLAP WRAPPING SHALL BE INSTALLED FOR ALL FRAGILE PLANTS TO PROTECT AGAINST WINTER WINDS AND SNOW. FOR EXAMPLE, THE BASE OF THE BUILDING SUBJECT TO FALLING SNOW FROM ROOFS, OR IN AREAS SUBJECT TO SNOW STORAGE AND REMOVAL, THE PROTECTION SHALL BE REVIEWED AND APPROVED AT THE END OF THE PLANTING WORKS BY LANDSCAPE ARCHITECT. PROTECTORS MUST BE ADAPTED TO EACH PLANT OR GROUP OF PLANTS ACCORDING TO THE SPECIFICATIONS OF THE LANDSCAPE ARCHITECT. STRUCTURE AND MATERIALS DEVELOPED FOR WINTER PROTECTION SHALL REMAIN IN THE POSSESSION OF THE CUSTOMER AFTER THE WARRANTY PERIOD OF THE WORK.
- AT THE TIME OF FINAL WARRANTY ACCEPTANCE, ALL MATERIAL MUST BE IN A HEALTHY AND VIGOROUS CONDITION. BEDS AND TREES MUST NOT BE PRECISELY CULTIVATED AND FREE OF WEED, RUBBER AND OTHERS. ALL STAKES, WIRE, HOPE AND OTHER ACCESSORIES MUST BE REMOVED UPON FINAL ACCEPTANCE, EXCEPT FOR PLANT MATERIAL UNDER WARRANTY.

PROPOSED PLANT LIST

KEY	QTY	BOTANICAL NAME	COMMON NAME	SIZE	CONDITION	NOTES
DECIDUOUS TREES						
AC	1	Amelanchier canadensis	Shadblow Serviceberry	2000mm ht	B&B	Multi-stem
AF	6	Acer x freemanii 'Autumn Blaze'	Freeman's Maple	60mm dia	B&B	
CO	3	Celtis occidentalis	Common Hackberry	60mm dia	B&B	
GP	4	Ginkgo biloba 'Autumn Gold'	Maiden Tree 'Autumn Gold'	60mm dia	B&B	
MS	1	Magnolia stellata 'Royal Star'	Star Magnolia	2000mm ht	B&B	Multi-stem
QP	2	Quercus palustris	Pin Oak	60mm dia	B&B	
SK	5	Gleditsia triacanthos var. inermis 'Draves Streetkeeper Honeylocust'	Draves Streetkeeper Honeylocust	60mm dia	B&B	
CONIFEROUS SHRUBS						
TMD	31	Taxus X Media 'Densiformis'	Dense Spreading Yew	500mm spr	Potted	1200mm o.c.
TOF	18	Thuja occidentalis 'Fastigiata'	Pyramidal Cedar	1500mm ht	Potted	1000mm o.c.
TOS	8	Thuja Occidentalis 'Smaragd'	Emerald Green Arborvitae	1500mm ht	Potted	800mm o.c.
DECIDUOUS SHRUBS						
BTR	47	Berberis thunbergii 'Royal Burgundy'	Japanese Barberry	400mm ht	Potted	800mm o.c.
CAF	68	Cornus sericea 'Farrow' Atico Fire	Arctic Fire Red Twig Dogwood	600mm ht	Potted	1000mm o.c.
EAC	16	Euonymus alatus 'Compactus'	Dwarf Burning Bush	600mm ht	Potted	1200mm o.c.
HAA	32	Hydrangea arborescens 'Annabelle'	Annabelle Hydrangea	2 gal pot	Potted	1000mm o.c.
HPL	10	Hydrangea paniculata 'Limelight'	Limelight Hydrangea	600mm ht	Potted	1000mm o.c.
RAG	20	Rhus aromatica 'Gro-Low'	Fragrant Sumac	400mm ht	Potted	800mm o.c.
SBT	46	Spiraea betulifolia 'Tor'	Birch Leaf Spirea	400mm ht	Potted	800mm o.c.
SMP	9	Syringa meyeri 'Palibin'	Dwarf Korean Lilac	600mm ht	Potted	1200mm o.c.
SSS	92	Sorbaria sorbifolia 'Sem'	Sem False Spirea	400mm ht	Potted	1200mm o.c.
SXA	11	Spiraea x arguta 'Compacta'	Dwarf Garland Spirea	600mm ht	Potted	1200mm o.c.
ORNAMENTAL GRASSES						
hna	143	Hakonechloa macra 'Aureola'	Hakone Grass 'Aureola'	1L pot	Potted	400mm o.c.
pvs	92	Panicum virgatum 'Shenandoah'	Switch Grass 'Shenandoah'	1L pot	Potted	400mm o.c.
sla	103	Sesleria autumnalis	Autumn Moor Grass	1L pot	Potted	350mm o.c.
PERENNIALS						
asc	40	Anemone x hybrida 'September Charm'	Japanese Anemone	1L pot	Potted	450mm o.c.
gao	65	Galium odoratum	Sweet Woodruff	1L pot	Potted	400mm o.c.
grz	52	Geranium 'Rozanne'	Hardy Geranium Rozanne	1L pot	Potted	450mm o.c.
haw	283	Hemerocallis 'Alice in Wonderland'	Alice in Wonderland Daylily	1L pot	Potted	400mm o.c.
hba	49	Hosta 'Blue Angel'	Large Blue Hosta	1 gal pot	Potted	500mm o.c.
hpu	52	Hosta 'Guacamole'	Guacamole Hosta	1 gal pot	Potted	500mm o.c.
nw	92	Nepeta racemosa 'Walker's Low'	Nepeta Walker's Low Catmint	1L pot	Potted	450mm o.c.
pst	309	Pachysandra terminalis	Japanese Spurge	1L pot	Potted	300mm o.c.
pov	13	Polygonatum odoratum 'Variegatum'	Solomon's Seal	1L pot	Potted	400mm o.c.
tss	155	Tierelia cordifolia 'Sugar and Spice'	Foam Flower 'Sugar and Spice'	1L pot	Potted	300mm o.c.

CLIENT
FORUM ASSET MANAGEMENT
EAST POOL, 2ND FLOOR
151 BAY STREET
TORONTO, ON M5J 2T3
T. 416-947-0289
WWW.forum.com

ARCHITECTURE
lemay
Lemay Co Inc
SUITE 401
60 ADELAIDE ST E
TORONTO, ON M5C 3E4
T. 647-254-3185
www.lemay.com

MECHANICAL & ELECTRICAL
STRUCTURAL
D+M Structural Engineering
110
333 Preston Street
Ottawa, ON K1S 5M4
T. 613-651-8480
www.dmsr.ca

LANDSCAPE
Lemay
3500
Saint-Jacques Street
Montreal, QC H3C 1H2
T. 514-422-5011
www.lemay.com

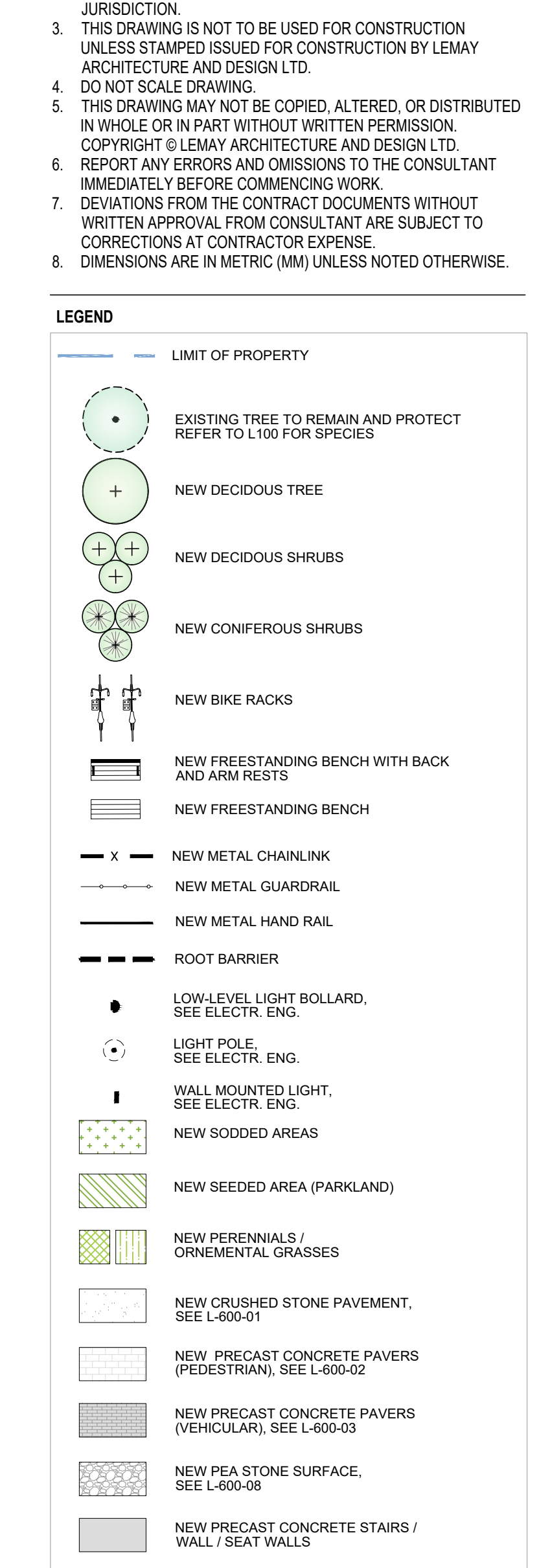
CIVIL
Jain Sustainability
2nd Floor
7405 East Darbo Crescent
Mississauga, ON L5N 0P6
T. 905-285-9900
www.jainsustainability.ca

STRUCTURE
300
2611 Queneau Drive
Ottawa, ON K2B 9C2
T. 613-229-2880
www.arpogroup.com

SUBVEIOR
Aemis, O'Sullivan, Vollebæk Ltd.
Suite 500
14 Concourse Gate
Nepean, ON K2E 7S6
T. 613-727-8800
www.aemis.com

NOTES

- CONTRACTOR TO CHECK AND VERIFY ALL DIMENSIONS PRIOR TO COMMENCING WORK.
- CONTRACTOR TO COMPLY WITH ALL BUILDING CODES, REGULATIONS, AND ORDINANCES OF AUTHORITIES HAVING JURISDICTION.
- THIS DRAWING IS NOT TO BE USED FOR CONSTRUCTION BY LEMAY ARCHITECTURE AND DESIGN LTD.
- DO NOT SCALE DRAWING.
- THIS DRAWING MAY NOT BE COPIED, ALTERED, OR DISTRIBUTED IN WHOLE OR IN PART WITHOUT WRITTEN PERMISSION. COPYRIGHT © LEMAY ARCHITECTURE AND DESIGN LTD.
- REPORT ANY ERRORS AND OMISSIONS TO THE CONSULTANT IMMEDIATELY BEFORE COMMENCING WORK.
- DEVIATIONS FROM THE CONTRACT DOCUMENTS WITHOUT WRITTEN APPROVAL FROM CONSULTANT ARE SUBJECT TO CORRECTIONS AT CONTRACTOR'S EXPENSE.
- DIMENSIONS ARE IN METRIC (MM) UNLESS NOTED OTHERWISE.



ISSUE

#	DATE	DESCRIPTION
9	2025-12-02	ISSUED FOR VE REVISED
8	2025-11-28	ISSUED FOR VE
7	2025-09-26	ISSUED FOR CONSULTATION
6	2025-06-16	ISSUED FOR BUILDING PERMIT
5	2025-05-02	ISSUED FOR TENDER REVIEW
4	2025-03-07	ISSUED FOR BUILDING PERMIT
3	2024-12-20	ISSUED FOR 90% CD
2	2024-08-13	ISSUED FOR CLASS C ESTIMATE
1	2024-04-06	ISSUED FOR SPA RESUBMISSION
#	DATE	DESCRIPTION

PROJECT NUMBER & PROJECT NAME
24-0353 - 15(17) OBLATS AVENUE, OTTAWA

SHEET NAME
PLANTING PLAN

DATE / TIME STAMP
12/02/2025 12:06:13 PM

APPROVED BY
MYLENE CARREAU
CHECKED BY
MYLENE CARREAU
DRAWN BY
TAN AU CA NGUYEN
SCALE

SHEET NUMBER
L.200

SEALS
Professional Engineer Seal
Professional Architect Seal

PROJECT NUMBER & PROJECT NAME
24-0353 - 15(17) OBLATS AVENUE, OTTAWA

SHEET NAME
PLANTING PLAN

DATE / TIME STAMP
12/02/2025 12:06:13 PM

APPROVED BY
MYLENE CARREAU
CHECKED BY
MYLENE CARREAU
DRAWN BY
TAN AU CA NGUYEN
SCALE

SHEET NUMBER
L.200

SEALS
Professional Engineer Seal
Professional Architect Seal

File Path: Autodesk Docs://7410353_15-17 Oblats Ottawa/24-0353_Oblats_AR_Building_New_v2.rvt

SHEET SIZE - ARCH E (914x1219 2mm) (37x48)

19/646