

GRADIENTWIND

ENGINEERS & SCIENTISTS

PEDESTRIAN LEVEL WIND STUDY

500 and 508 Edgeworth Avenue
Ottawa, Ontario

Report: 25-101-PLW



October 29, 2025

PREPARED FOR

Edgeworth Development Lands Corp
451 Daly Avenue, 2nd Floor
Ottawa, ON K1N 6H6

PREPARED BY

Omar Rioseco, B.Eng., Junior Wind Scientist
David Huitema, M.Eng., P.Eng., CFD Lead Engineer

EXECUTIVE SUMMARY

This report describes a pedestrian level wind (PLW) study undertaken to satisfy Zoning By-Law Amendment application submission requirements for the proposed residential development located at 500 and 508 Edgeworth Avenue in Ottawa, Ontario (hereinafter referred to as “subject site” or “proposed development”). Our mandate within this study is to investigate pedestrian wind conditions within and surrounding the subject site, and to identify areas where wind conditions may interfere with certain pedestrian activities so that mitigation measures may be considered, where required.

The study involves simulation of wind speeds for selected wind directions in a three-dimensional (3D) computer model using the computational fluid dynamics (CFD) technique, combined with meteorological data integration, to assess pedestrian wind comfort and safety within and surrounding the subject site according to City of Ottawa wind comfort and safety criteria. The results and recommendations derived from these considerations are detailed in the main body of the report (Section 5), illustrated in Figures 3A-9, and summarized as follows:

- 1) All grade-level areas within and surrounding the subject site are predicted to experience conditions that are considered acceptable for the intended pedestrian uses throughout the year. Conditions over surrounding sidewalks, neighbouring surface parking lots, the existing pathway to the west, the proposed multi-use pathway, the grade-level amenity areas, walkways, drop-off area, and in the vicinity of building access points, are considered acceptable.
- 2) During the typical use period, wind comfort conditions over the amenity terraces located to the north and south of the proposed development at Level 23 are predicted to be suitable for sitting, which is considered acceptable. 1.8-m tall wind screens were included along the perimeter of these amenity terraces, and along the perimeter of the amenity terrace to the west at the same level; these screens are to provide shielding for these terraces from direct upper-level winds from the western compass quadrants.
- 3) During the typical use period, conditions over the amenity terrace to the west at Level 23 are predicted to be suitable for a mix of sitting and standing. If required by programming, recommendations regarding mitigation are provided in Section 5.2.



- 4) The foregoing statements and conclusions apply to common weather systems, during which no dangerous wind conditions, as defined in Section 4.4, are expected anywhere over the subject site. During extreme weather events, (for example, thunderstorms, tornadoes, and downbursts), pedestrian safety is the main concern. However, these events are generally short-lived and infrequent and there is often sufficient warning for pedestrians to take appropriate cover.

TABLE OF CONTENTS

1.	INTRODUCTION	1
2.	TERMS OF REFERENCE	1
3.	OBJECTIVES	2
4.	METHODOLOGY	2
4.1	Computer-Based Context Modelling	3
4.2	Wind Speed Measurements.....	3
4.3	Historical Wind Speed and Direction Data	4
4.4	Pedestrian Wind Comfort and Safety Criteria – City of Ottawa.....	6
5.	RESULTS AND DISCUSSION	8
5.1	Wind Comfort Conditions – Grade Level.....	9
5.2	Wind Comfort Conditions – Level 23 Amenity Terraces.....	10
5.3	Wind Safety	10
5.4	Applicability of Results	11
6.	CONCLUSIONS AND RECOMMENDATIONS	11

FIGURES

APPENDICES

Appendix A – Simulation of the Atmospheric Boundary Layer



1. INTRODUCTION

Gradient Wind Engineering Inc. (Gradient Wind) was retained by Edgeworth Development Lands Corp to undertake a pedestrian level wind (PLW) study to satisfy Zoning By-Law Amendment application submission requirements for the proposed residential development located at 500 and 508 Edgeworth Avenue in Ottawa, Ontario (hereinafter referred to as “subject site” or “proposed development”). Our mandate within the current study is to investigate pedestrian wind conditions within and surrounding the subject site, and to identify areas where wind conditions may interfere with certain pedestrian activities so that mitigation measures may be considered, where required.

Our work is based on industry standard computer simulations using the computational fluid dynamics (CFD) technique and data analysis procedures, City of Ottawa wind comfort and safety criteria, architectural drawings prepared by Roderick Lahey Architect Inc. in May 2025, surrounding street layouts and existing and approved future building massing information obtained from the City of Ottawa, as well as recent satellite imagery.

2. TERMS OF REFERENCE

The subject site is located at 500 and 508 Edgeworth Avenue in Ottawa, situated approximately 75 metres (m) north-northwest of the intersection Edgeworth Avenue and Carling Avenue on a parcel of land bordered by Edgeworth Avenue to the east, a high-rise building to the south, an existing pathway and green space to the west, and a low-rise residential building to the north. The proposed development comprises a 24-storey residential building, topped with a mechanical penthouse (MPH).

Above the underground parking levels, the ground floor of the proposed development includes residential units along the north elevation, a lobby to the east, bike parking to the south, and an indoor amenity at the southwest corner with adjoining exterior communal amenities. Access to the underground parking levels is provided by a ramp at the southeast corner via a drive aisle extending from Edgeworth Avenue. Levels 2-22 and 24 are reserved for residential occupancy, while Level 23 includes residential units along the east elevation, a party room to the south, and a gym to the north. Exterior amenities adjoin the noted indoor amenities at Level 23. The building extends from the east elevation at Level 2 over the lobby entrance below, and the building steps back from the north, east, and southeast elevations at Level 5, from the west elevation at Level 10, and from the north, south, and west elevations at Level 23.



The near-field surroundings (defined as an area within 200 m of the subject site) comprise low-rise residential dwellings from the north clockwise to the east, a low-rise commercial plaza with a surface parking lot to the southeast, mid- and high-rise buildings to the east and south, and green space in the remaining directions. Notably, the future Lincoln Fields LRT station is under construction approximately 150 m to the southwest of the proposed development. The far-field surroundings (defined as an area beyond the near-field but within a 2-kilometre (km) radius of the subject site) are characterized by low-rise suburban massing in all directions with isolated mid-and high-rise buildings from the southwest clockwise to the east-northeast along Carling Avenue and Richmond Road. Britannia Beach and the Britannia Conservation Area are located approximately 1.6 km and 650 to the west and northwest, respectively, and the Ottawa River flows from the west-northwest clockwise to the northeast, approximately 850 m to the northwest.

Site plans for the proposed and existing massing scenarios are illustrated in Figures 1A and 1B, while Figures 2A-2H illustrate the computational models used to conduct the study. The existing massing scenario includes the existing massing and any developments approved by the City of Ottawa.

3. OBJECTIVES

The principal objectives of this study are to (i) determine pedestrian level wind conditions at key areas within and surrounding the development site; (ii) identify areas where wind conditions may interfere with the intended uses of outdoor spaces; and (iii) recommend suitable mitigation measures, where required.

4. METHODOLOGY

The approach followed to quantify pedestrian wind conditions over the site is based on CFD simulations of wind speeds across the subject site within a virtual environment, meteorological analysis of the Ottawa area wind climate, and synthesis of computational data with City of Ottawa wind comfort and safety criteria¹. The following sections describe the analysis procedures, including a discussion of the noted pedestrian wind criteria.

¹ City of Ottawa Terms of References: Wind Analysis
https://documents.ottawa.ca/sites/documents/files/wind_analysis_tor_en.pdf



4.1 Computer-Based Context Modelling

A computer based PLW study was performed to determine the influence of the wind environment on pedestrian comfort over the proposed development site. Pedestrian comfort predictions, based on the mechanical effects of wind, were determined by combining measured wind speed data from CFD simulations with statistical weather data obtained from Ottawa Macdonald-Cartier International Airport. The general concept and approach to CFD modelling is to represent building and topographic details in the immediate vicinity of the subject site on the surrounding model, and to create suitable atmospheric wind profiles at the model boundary. The wind profiles are designed to have similar mean and turbulent wind properties consistent with actual site exposures.

An industry standard practice is to omit trees, vegetation, and other existing and planned landscape elements from the model due to the difficulty of providing accurate seasonal representation of vegetation. The omission of trees and other landscaping elements produces slightly stronger wind speeds.

4.2 Wind Speed Measurements

The PLW analysis was performed by simulating wind flows and gathering velocity data over a CFD model of the site for 16 wind directions. The CFD simulation model was centered on the proposed development, complete with surrounding massing within a radius of 480 m. The process was performed for two context massing scenarios, as noted in Section 2.

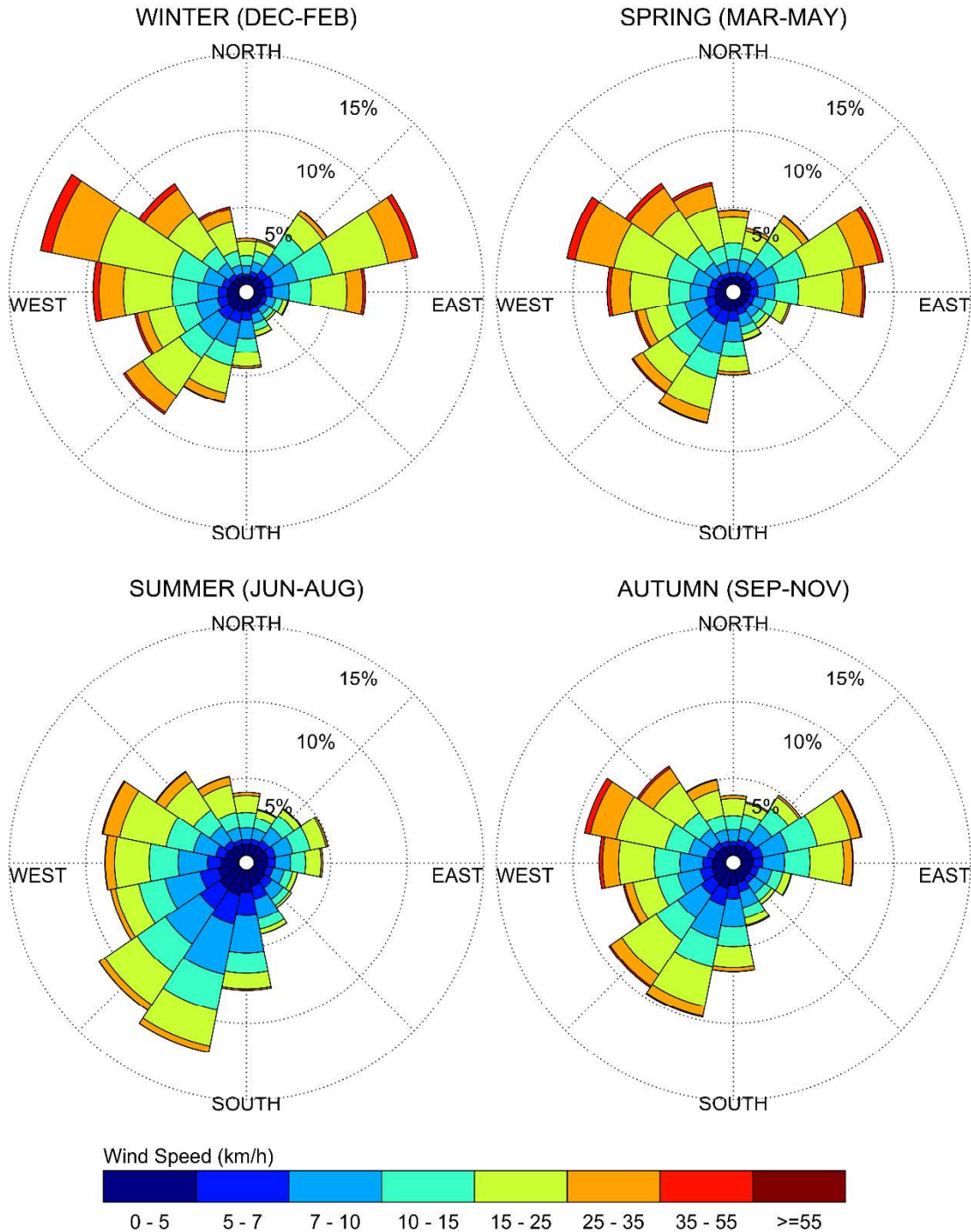
Mean and peak wind speed data obtained over the subject site for each wind direction were interpolated to 36 wind directions at 10° intervals, representing the full compass azimuth. Measured wind speeds approximately 1.5 m above local grade and the common amenity terraces serving the proposed development at Level 23 were referenced to the wind speed at gradient height to generate mean and peak velocity ratios, which were used to calculate full-scale values. Gradient height represents the theoretical depth of the boundary layer of the earth's atmosphere, above which the mean wind speed remains constant. Further details of the wind flow simulation technique are presented in Appendix A.

4.3 Historical Wind Speed and Direction Data

A statistical model for winds in Ottawa was developed from approximately 40 years of hourly meteorological wind data recorded at Ottawa Macdonald-Cartier International Airport and obtained from Environment and Climate Change Canada. Wind speed and direction data were analyzed during the appropriate hours of pedestrian usage (that is, between 06:00 and 23:00) and divided into four distinct seasons, as stipulated in the wind criteria. Specifically, the spring season is defined as March through May, the summer season is defined as June through August, the autumn season is defined as September through November, and the winter season is defined as December through February, inclusive.

The statistical model of the Ottawa area wind climate, which indicates the directional character of local winds on a seasonal basis, is illustrated on the following page. The plots illustrate seasonal distribution of measured wind speeds and directions in kilometers per hour (km/h). Probabilities of occurrence of different wind speeds are represented as stacked polar bars in sixteen azimuth divisions. The radial direction represents the percentage of time for various wind speed ranges per wind direction during the measurement period. The prominent wind speeds and directions can be identified by the longer length of the bars. For Ottawa, the most common winds occur for westerly wind directions, followed by those from the east, while the most common wind speeds are below 36 km/h. The directional prominence and relative magnitude of wind speed changes somewhat from season to season.

SEASONAL DISTRIBUTION OF WIND OTTAWA MACDONALD-CARTIER INTERNATIONAL AIRPORT



Notes:

1. Radial distances indicate percentage of time of wind events.
2. Wind speeds are mean hourly in km/h, measured at 10 m above the ground.

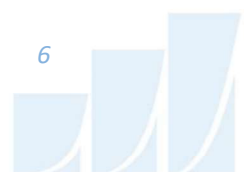


4.4 Pedestrian Wind Comfort and Safety Criteria – City of Ottawa

Pedestrian wind comfort and safety criteria are based on the mechanical effects of wind without consideration of other meteorological conditions (that is, temperature and relative humidity). The comfort criteria assume that pedestrians are appropriately dressed for a specified outdoor activity during any given season. Five pedestrian comfort classes based on 20% non-exceedance mean wind speed ranges are used to assess pedestrian comfort: (1) Sitting; (2) Standing; (3) Strolling; (4) Walking; and (5) Uncomfortable. The gust speeds, and equivalent mean speeds, are selected based on the Beaufort scale, which describes the effects of forces produced by varying wind speed levels on objects. Wind conditions suitable for sitting are represented by the colour blue, standing by green, strolling by yellow, and walking by orange; uncomfortable conditions are represented by the colour magenta. Specifically, the comfort classes, associated wind speed ranges, and limiting criteria are summarized as follows:

PEDESTRIAN WIND COMFORT CLASS DEFINITIONS

Wind Comfort Class	Mean Speed (km/h)	Description
SITTING	≤ 10	Mean wind speeds no greater than 10 km/h occurring at least 80% of the time. The equivalent gust wind speed is approximately 16 km/h.
STANDING	≤ 14	Mean wind speeds no greater than 14 km/h occurring at least 80% of the time. The equivalent gust wind speed is approximately 22 km/h.
STROLLING	≤ 17	Mean wind speeds no greater than 17 km/h occurring at least 80% of the time. The equivalent gust wind speed is approximately 27 km/h.
WALKING	≤ 20	Mean wind speeds no greater than 20 km/h occurring at least 80% of the time. The equivalent gust wind speed is approximately 32 km/h.
UNCOMFORTABLE	> 20	Uncomfortable conditions are characterized by predicted values that fall below the 80% target for walking. Brisk walking and exercise, such as jogging, would be acceptable for moderate excesses of this criterion.



Regarding wind safety, the pedestrian safety wind speed criterion is based on the approximate threshold that would cause a vulnerable member of the population to fall. A 0.1% exceedance gust wind speed of 90 km/h is classified as dangerous. From calculations of stability, it can be shown that gust wind speeds of 90 km/h would be the approximate threshold wind speed that would cause an average elderly person in good health to fall. Notably, pedestrians tend to be more sensitive to wind gusts than to steady winds for lower wind speed ranges. For strong winds approaching dangerous levels, this effect is less important because the mean wind can also create problems for pedestrians.

Experience and research on people's perception of mechanical wind effects has shown that if the wind speed levels are exceeded for more than 20% of the time, the activity level would be judged to be uncomfortable by most people. For instance, if a mean wind speed of 10 km/h (equivalent gust wind speed of approximately 16 km/h) were exceeded for more than 20% of the time most pedestrians would judge that location to be too windy for sitting. Similarly, if mean wind speed of 20 km/h (equivalent gust wind speed of approximately 32 km/h) at a location were exceeded for more than 20% of the time, walking or less vigorous activities would be considered uncomfortable. As these criteria are based on subjective reactions of a population to wind forces, their application is partly based on experience and judgment.

Once the pedestrian wind speed predictions have been established throughout the subject site, the assessment of pedestrian comfort involves determining the suitability of the predicted wind conditions for discrete regions within and surrounding the subject site. This step involves comparing the predicted comfort classes to the target comfort classes, which are dictated by the location type for each region (that is, a sidewalk, building entrance, amenity space, or other). An overview of common pedestrian location types and their typical windiest target comfort classes are summarized on the following page. Depending on the programming of a space, the desired comfort class may differ from this table.

TARGET PEDESTRIAN WIND COMFORT CLASSES FOR VARIOUS LOCATION TYPES

Location Types	Target Comfort Classes
Primary Building Entrance	Standing
Secondary Building Access Point	Walking
Public Sidewalk / Bicycle Path	Walking
Outdoor Amenity Space	Sitting / Standing
Café / Patio / Bench / Garden	Sitting / Standing
Transit Stop (Without Shelter)	Standing
Transit Stop (With Shelter)	Walking
Public Park / Plaza	Sitting / Standing
Garage / Service Entrance	Walking
Parking Lot	Walking
Vehicular Drop-Off Zone	Walking

5. RESULTS AND DISCUSSION

The following discussion of the predicted pedestrian wind conditions for the subject site is accompanied by Figures 3A-6B, which illustrate wind conditions at grade level for the proposed and existing massing scenarios and by Figures 8A-D, which illustrate wind conditions over the common amenity terraces serving the proposed development at Level 23. Conditions are presented as continuous contours of wind comfort throughout the subject site and correspond to the comfort classes presented in Section 4.4.

Wind comfort conditions are also reported for the typical use period, which is defined as May to October, inclusive. Figures 7 and 9 illustrate wind comfort conditions during this period at grade level and within the noted amenity terraces serving the proposed development, respectively, consistent with the comfort classes illustrated in Section 4.4.

The details of these conditions are summarized in the following pages for each area of interest.



5.1 Wind Comfort Conditions – Grade Level

Sidewalks along Edgeworth Avenue: Under the existing massing, wind comfort conditions along Edgeworth Avenue are predicted to be suitable for standing, or better, throughout the year. With the introduction of the proposed development, wind comfort conditions over the nearby public sidewalks along Edgeworth Avenue are predicted to be suitable for standing, or better, during the summer and autumn and strolling, or better, during the spring and winter. While following the introduction of the proposed development, wind conditions over the noted sidewalks are expected to be slightly windier throughout the year, the noted conditions are nonetheless considered acceptable.

Neighbouring Surface Parking Lots: Prior to and following the introduction of the proposed development, conditions over the existing surface parking lots to the immediate south and to the southeast of the subject site are predicted to be suitable for standing, or better, throughout the year. The noted conditions are considered acceptable.

Pathway to the West: Prior to and following the introduction of the proposed development, wind conditions over the existing pathway to the west of the subject site are predicted to be suitable for standing, or better, throughout the year. The noted conditions are considered acceptable.

Multi-Use Pathway Along North Elevation of the Subject Site and Drop-Off Area: Wind conditions over the proposed multi-use pathway along the north side of the proposed development are predicted to be suitable for strolling, or better, throughout the year with isolated walking conditions predicted near the northeast and northwest corners of the proposed development during the spring and winter seasons. The noted conditions are considered acceptable.

Wind conditions over the proposed drop-off area to the east are predicted to be suitable for standing, or better, throughout the year and are considered acceptable.

Exterior Communal Amenities: During the typical use period, wind conditions over the exterior communal amenity areas serving the proposed development at grade to the west and southwest are predicted to be suitable for mostly sitting, with an isolated area suitable for standing near the southwest corner of the ground floor. The noted conditions may be considered acceptable.



Building Access Points: Conditions in the vicinity of the primary and secondary access points serving the proposed development are predicted to be sitting throughout the year, which is considered acceptable.

5.2 Wind Comfort Conditions – Level 23 Amenity Terraces

Notably, the amenity terraces at Level 23 were modelled with 1.8-m tall wind screens along their full perimeters, which are recommended to provide shielding for these terraces from direct upper-level winds from the western compass quadrants.

During the typical use period, wind conditions over the amenity terraces to the north and south of Level 23 are predicted to be suitable for sitting, which is considered acceptable.

During the same period, wind conditions over the western amenity terrace at Level 23 are predicted to be suitable for a mix of sitting and standing. Where conditions are suitable for standing, they are also suitable for sitting at least 70% of the time during the same period, where the target is 80% to achieve the sitting comfort class. The noted conditions may be considered as acceptable depending on the programming of the terrace. Specifically, if the western terrace will not accommodate designated seating or lounging activities, the noted conditions may be considered acceptable. If required by programming, comfort conditions to the west within the terraces may be improved with the introduction of a canopy extending above Level 23 from the west elevation of the Level 24 floor slab, as well as targeted mitigation inboard of the terrace perimeter, in combination with the 1.8-m tall wind screens. This inboard mitigation may take the form of tall wind screens and clusters of dense plantings that are targeted adjacent to designated seating areas, as well as canopies located above designated seating areas.

5.3 Wind Safety

Within the context of typical weather patterns, which exclude anomalous localized storm events such as tornadoes and downbursts, no pedestrian areas within or surrounding the subject site are expected to experience conditions that could be considered dangerous, as defined in Section 4.4.



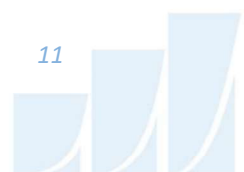
5.4 Applicability of Results

Pedestrian wind comfort and safety have been quantified for the specific configuration of existing and foreseeable construction around the subject site. Future changes (that is, construction or demolition) of these surroundings may cause changes to the wind effects in two ways, namely: (i) changes beyond the immediate vicinity of the subject site would alter the wind profile approaching the subject site; and (ii) development in proximity to the subject site would cause changes to local flow patterns.

6. CONCLUSIONS AND RECOMMENDATIONS

A complete summary of the predicted wind conditions is provided in Section 5 and illustrated in Figures 3A-9. Based on computer simulations using the CFD technique, meteorological data analysis of the Ottawa wind climate, City of Ottawa wind comfort and safety criteria, and experience with numerous similar developments, the study concludes the following:

- 1) All grade-level areas within and surrounding the subject site are predicted to experience conditions that are considered acceptable for the intended pedestrian uses throughout the year. Conditions over surrounding sidewalks, neighbouring surface parking lots, the existing pathway to the west, the proposed multi-use pathway, the grade-level amenity areas, walkways, drop-off area, and in the vicinity of building access points, are considered acceptable.
- 2) During the typical use period, wind comfort conditions over the amenity terraces located to the north and south of the proposed development at Level 23 are predicted to be suitable for sitting, which is considered acceptable. 1.8-m tall wind screens were included along the perimeter of these amenity terraces, and along the perimeter of the amenity terrace to the west at the same level; these screens are to provide shielding for these terraces from direct upper-level winds from the western compass quadrants.
- 3) During the typical use period, conditions over the amenity terrace to the west at Level 23 are predicted to be suitable for a mix of sitting and standing. If required by programming, recommendations regarding mitigation are provided in Section 5.2.



- 4) The foregoing statements and conclusions apply to common weather systems, during which no dangerous wind conditions, as defined in Section 4.4, are expected anywhere over the subject site. During extreme weather events, (for example, thunderstorms, tornadoes, and downbursts), pedestrian safety is the main concern. However, these events are generally short-lived and infrequent and there is often sufficient warning for pedestrians to take appropriate cover.

Sincerely,

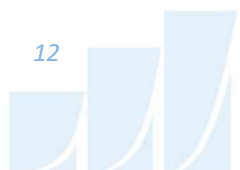
Gradient Wind Engineering Inc.

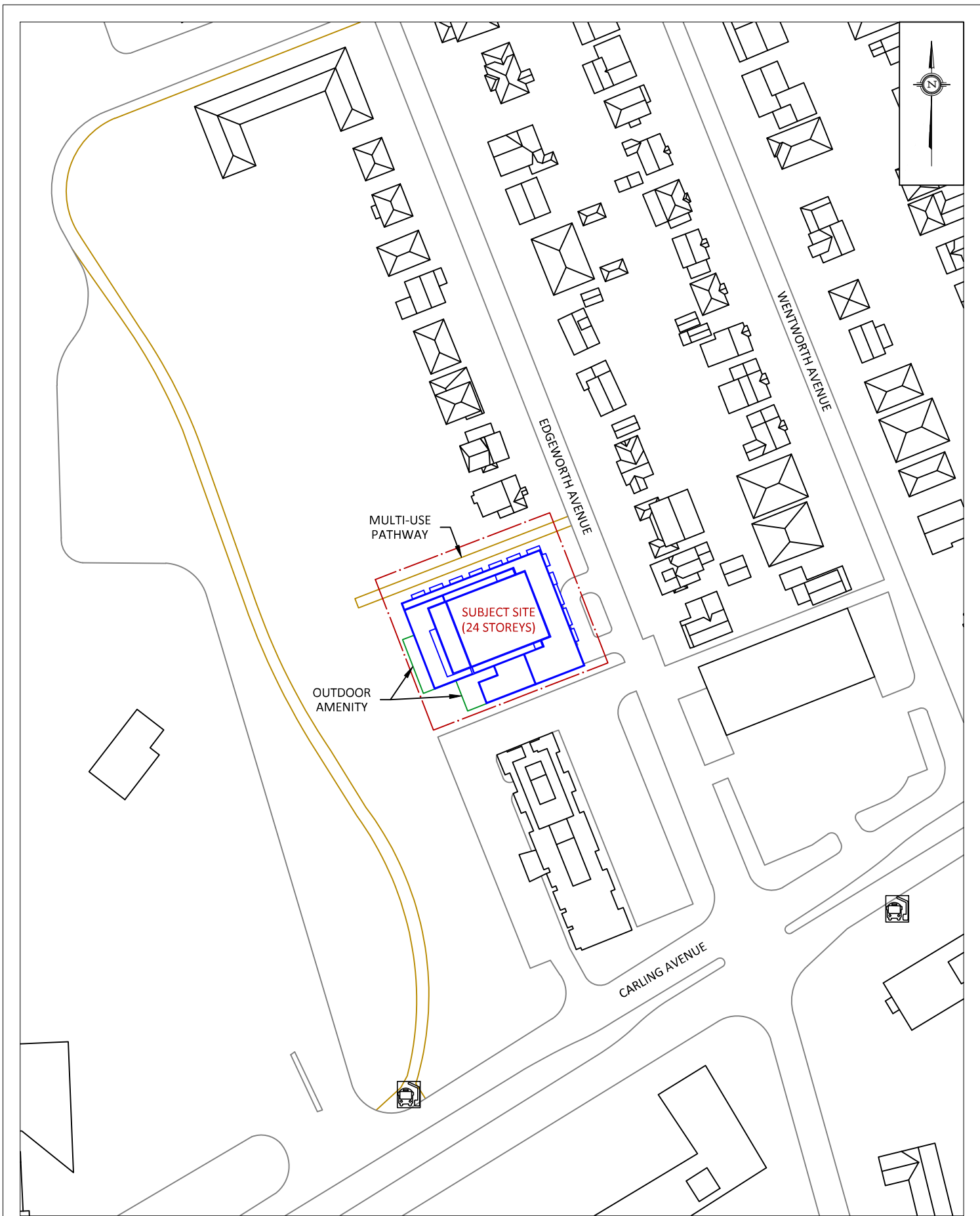


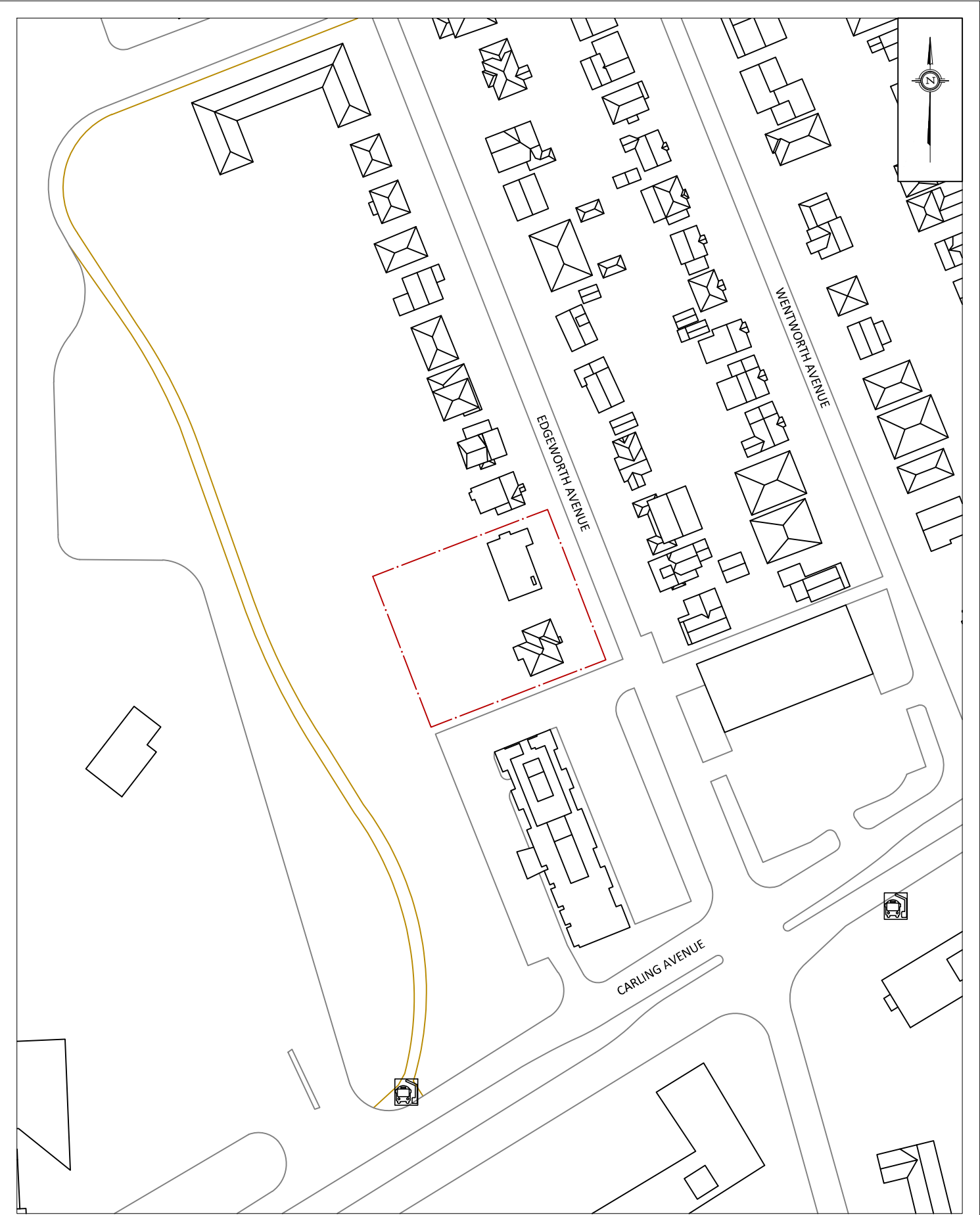
Omar Rioseco, B.Eng.
Junior Wind Scientist



David Huitema, M.Eng., P.Eng.
CFD Lead Engineer







<div><div>GRADIENTWIND</div><div>ENGINEERS & SCIENTISTS</div><div>127 WALGREEN ROAD, OTTAWA, ON 613 836 0934 • GRADIENTWIND.COM</div></div>	PROJECT500 AND 508 EDGEWORTH AVENUE, OTTAWA PEDESTRIAN LEVEL WIND STUDY		DESCRIPTION FIGURE 1B: EXISTING SITE PLAN AND SURROUNDING CONTEXT
	SCALE1:1500	DRAWING NO.25-101-PLW-1B	
	DATEJUNE 12, 2025	DRAWN BYS.K.	

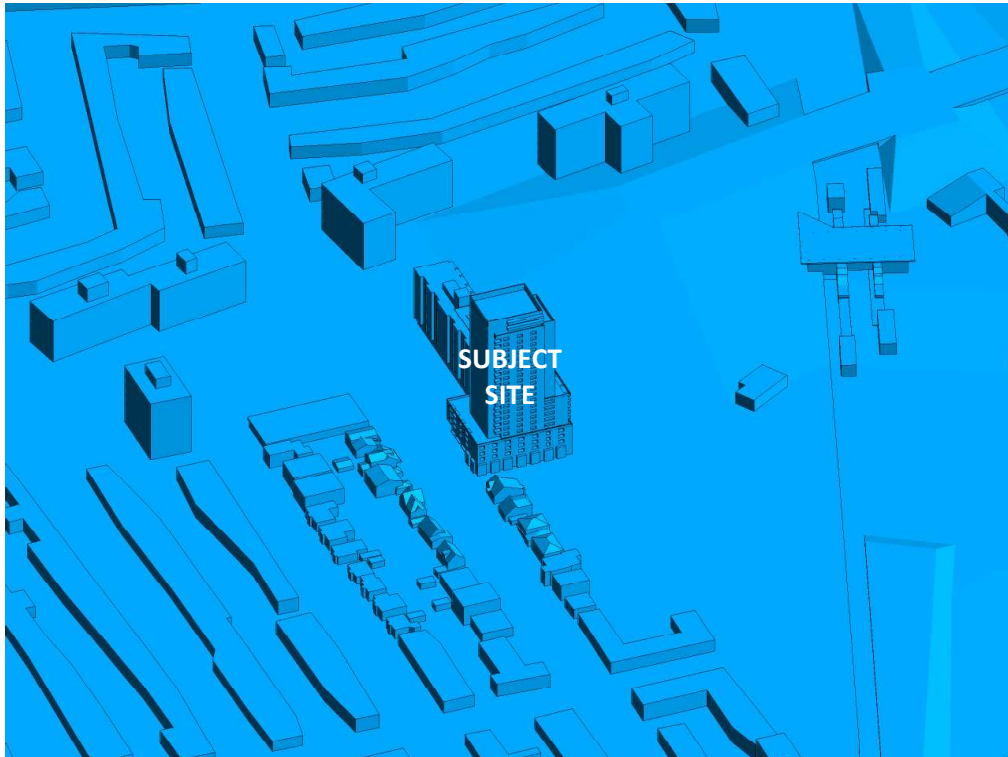


FIGURE 2A: COMPUTATIONAL MODEL, PROPOSED MASSING, NORTH PERSPECTIVE

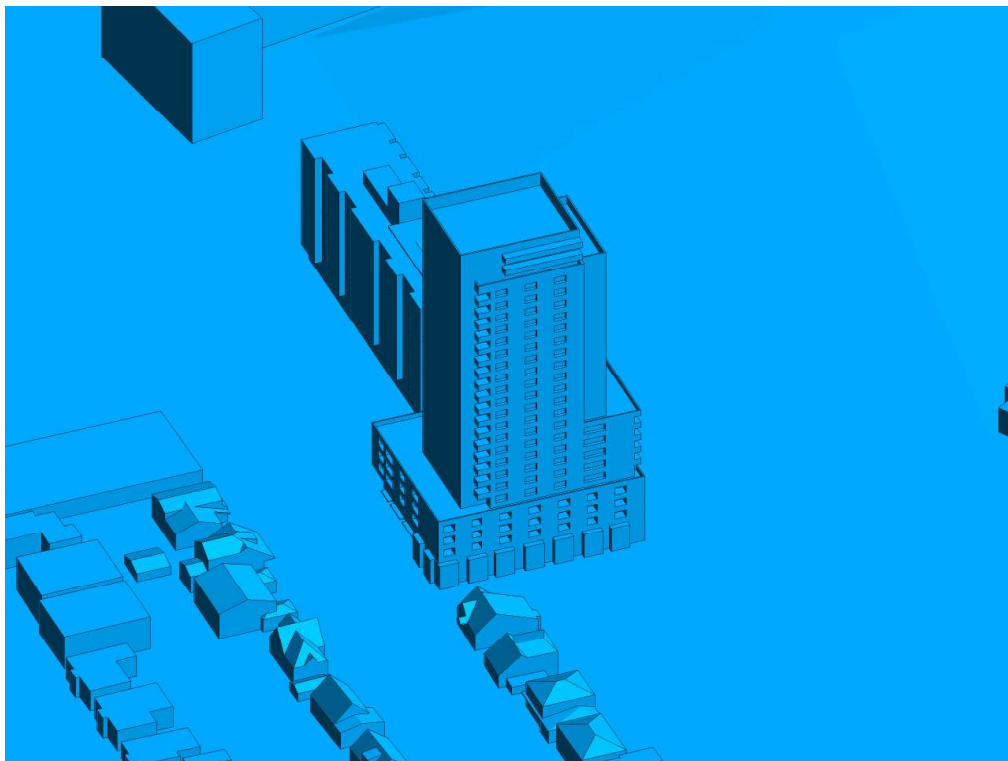


FIGURE 2B: CLOSE UP OF FIGURE 2A



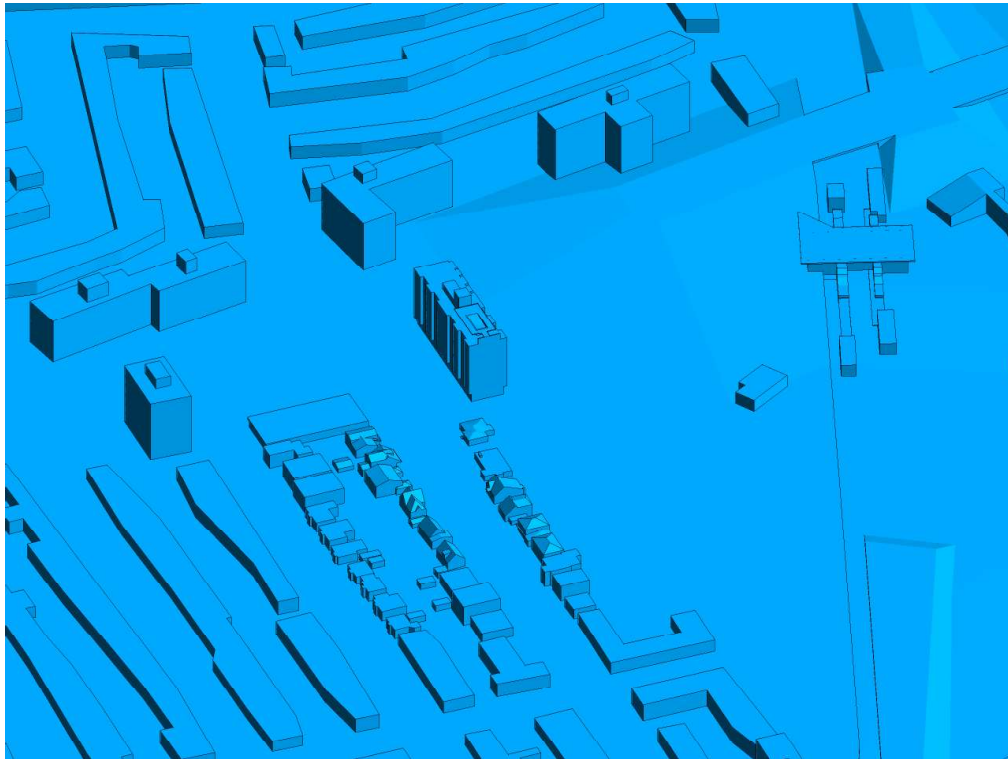


FIGURE 2C: COMPUTATIONAL MODEL, EXISTING MASSING, NORTH PERSPECTIVE

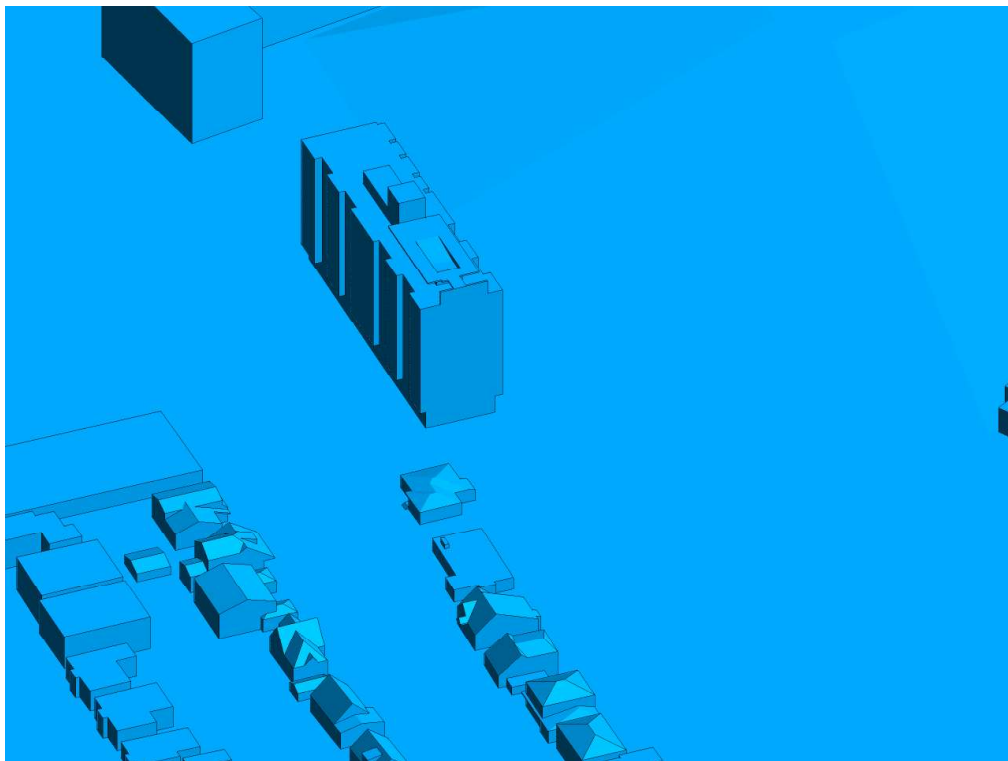


FIGURE 2D: CLOSE UP OF FIGURE 2C



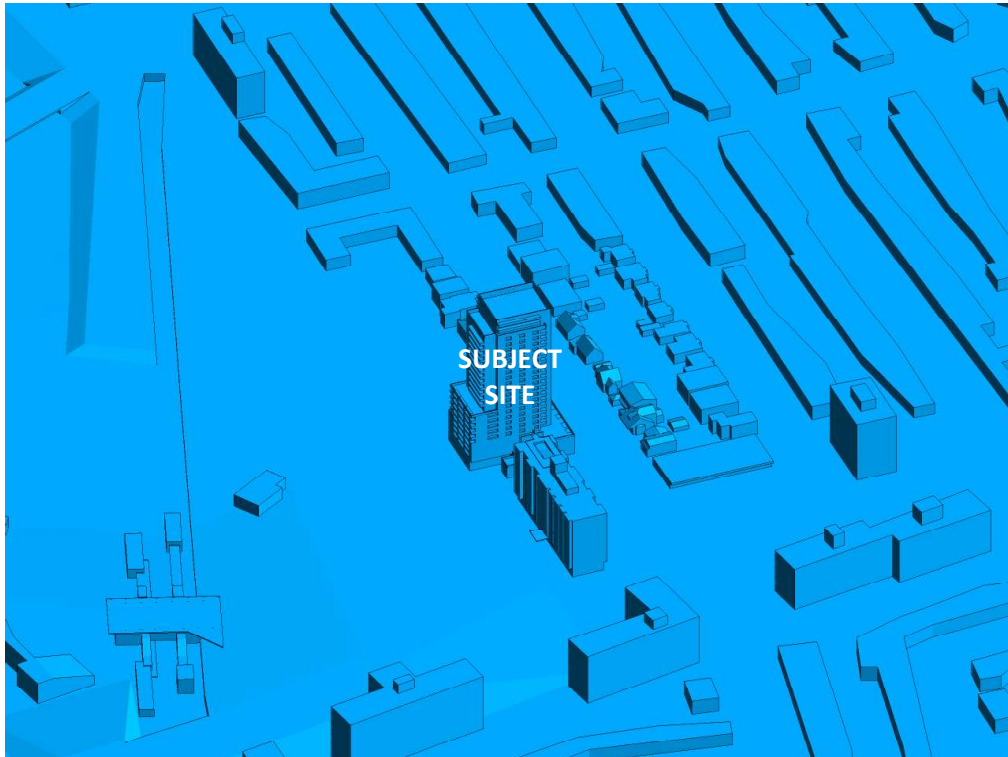


FIGURE 2E: COMPUTATIONAL MODEL, PROPOSED MASSING, SOUTH PERSPECTIVE

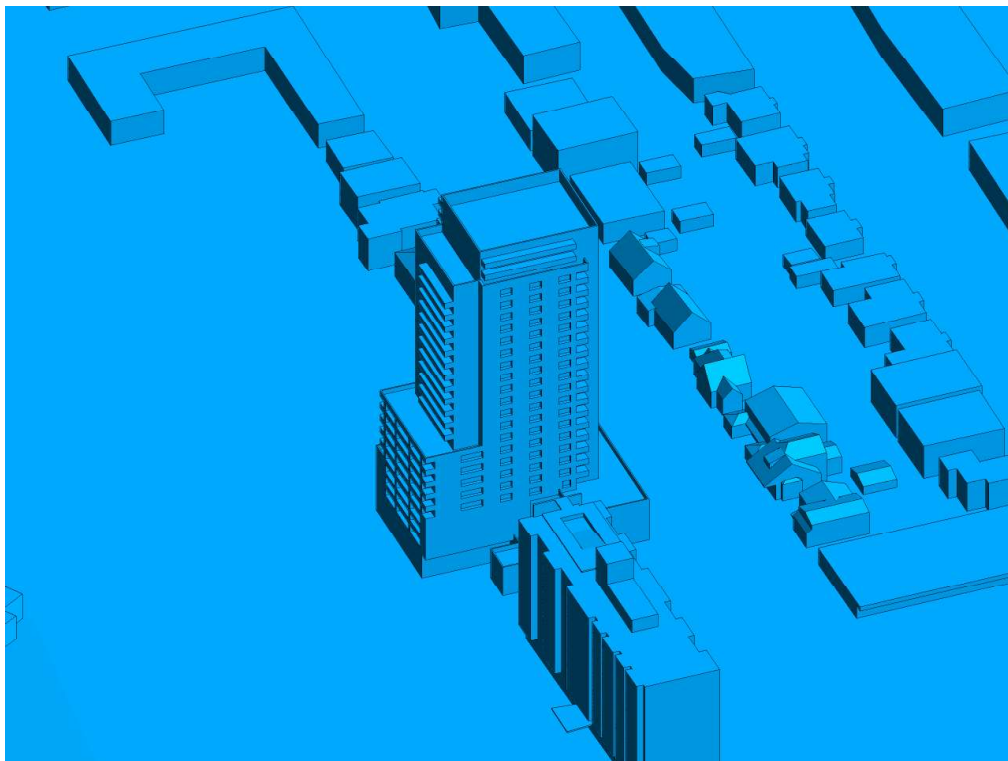


FIGURE 2F: CLOSE UP OF FIGURE 2E



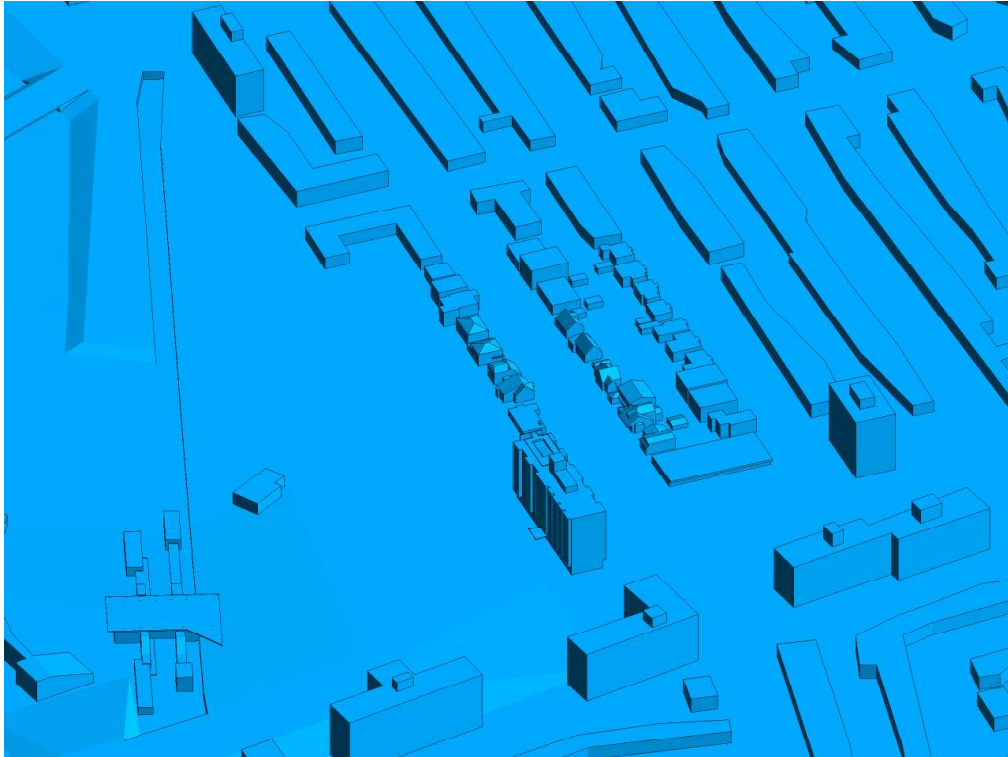


FIGURE 2G: COMPUTATIONAL MODEL, EXISTING MASSING, SOUTH PERSPECTIVE

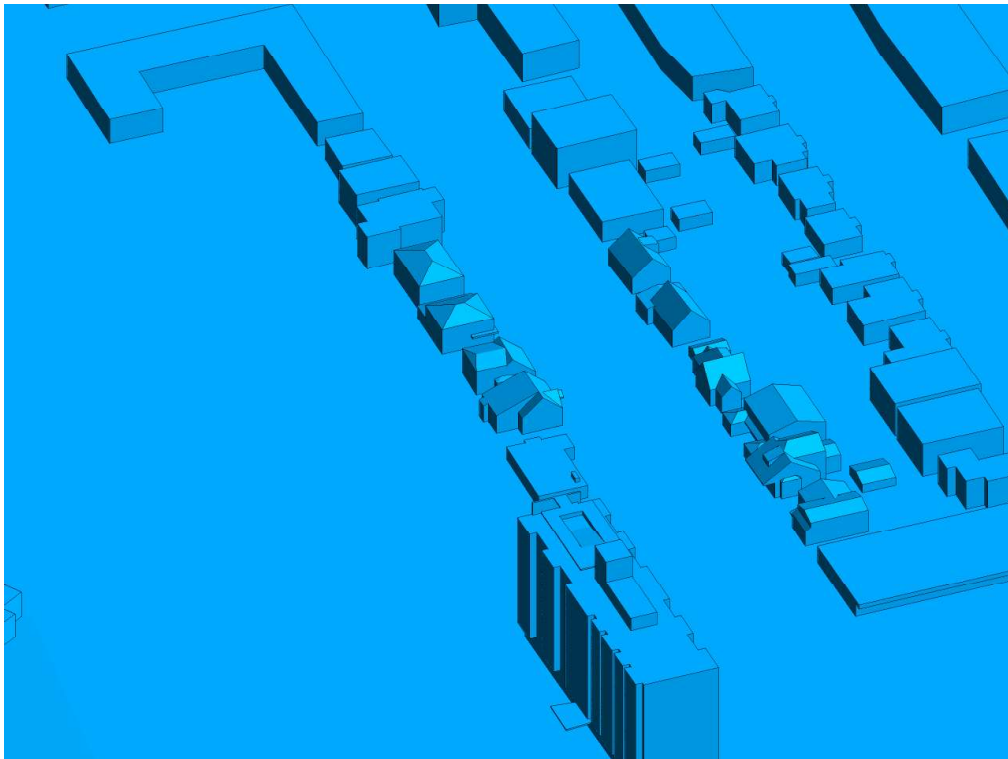


FIGURE 2H: CLOSE UP OF FIGURE 2G



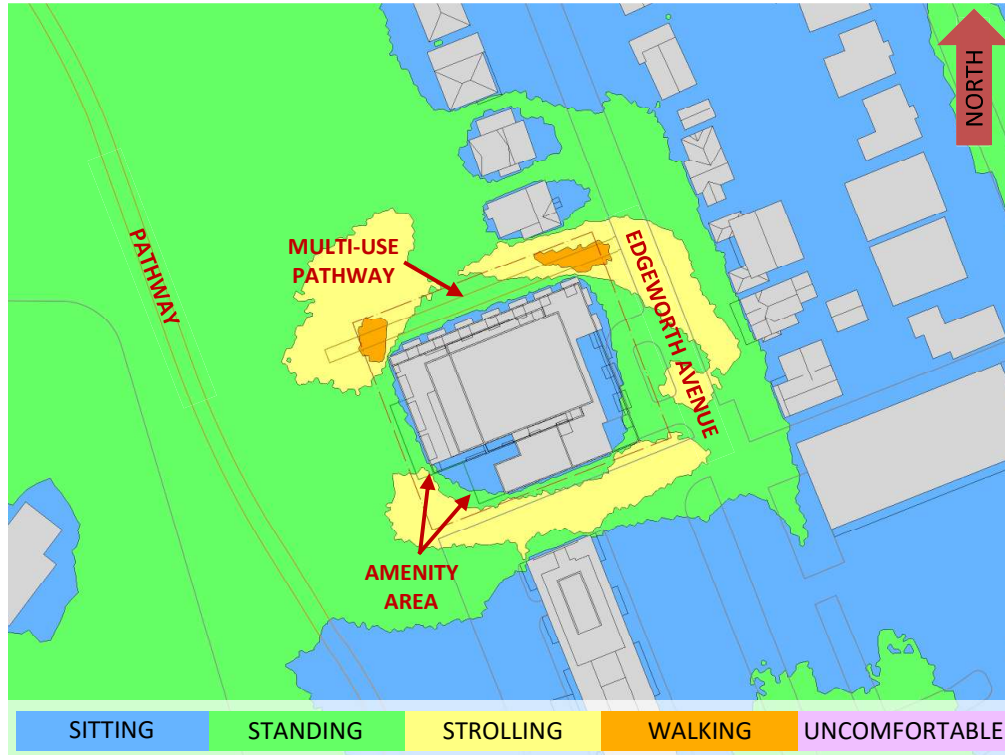


FIGURE 3A: SPRING – WIND COMFORT, GRADE LEVEL – PROPOSED MASSING



FIGURE 3B: SPRING – WIND COMFORT, GRADE LEVEL- EXISTING MASSING



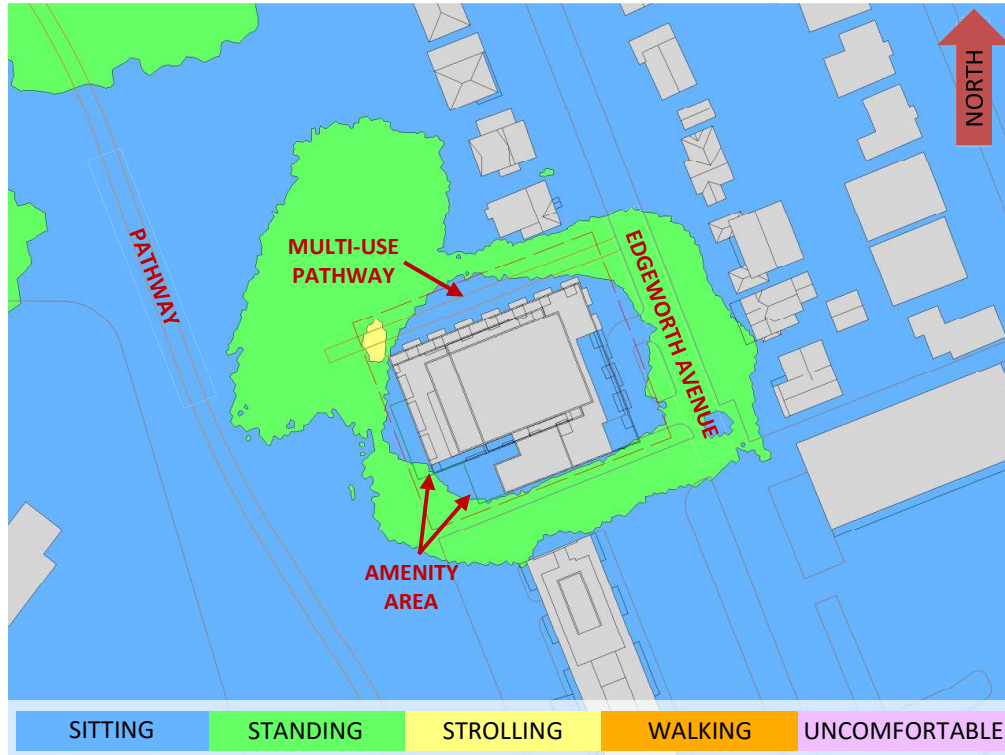


FIGURE 4A: SUMMER – WIND COMFORT, GRADE LEVEL – PROPOSED MASSING

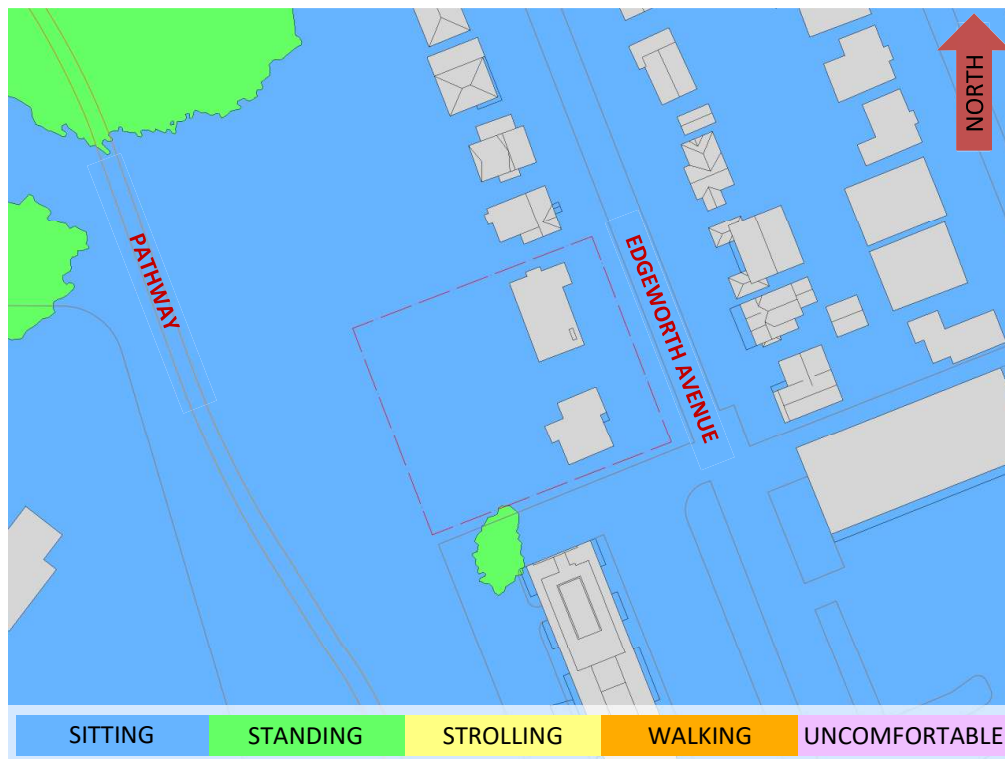


FIGURE 4B: SUMMER – WIND COMFORT, GRADE LEVEL– EXISTING MASSING



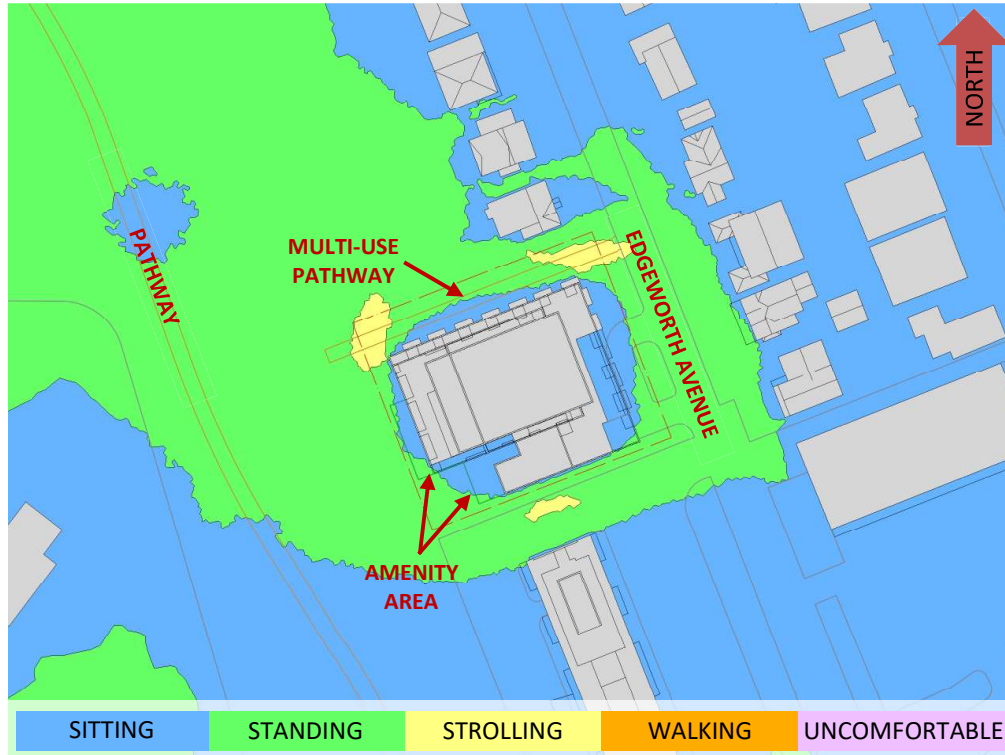


FIGURE 5A: AUTUMN – WIND COMFORT, GRADE LEVEL – PROPOSED MASSING

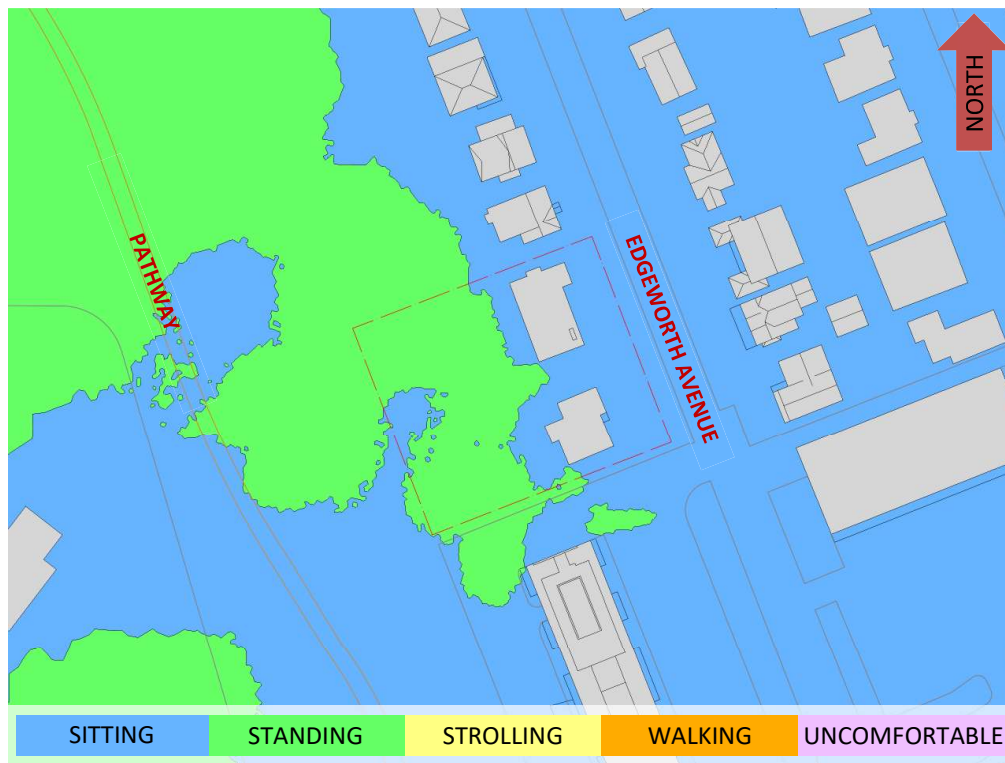
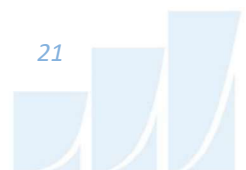
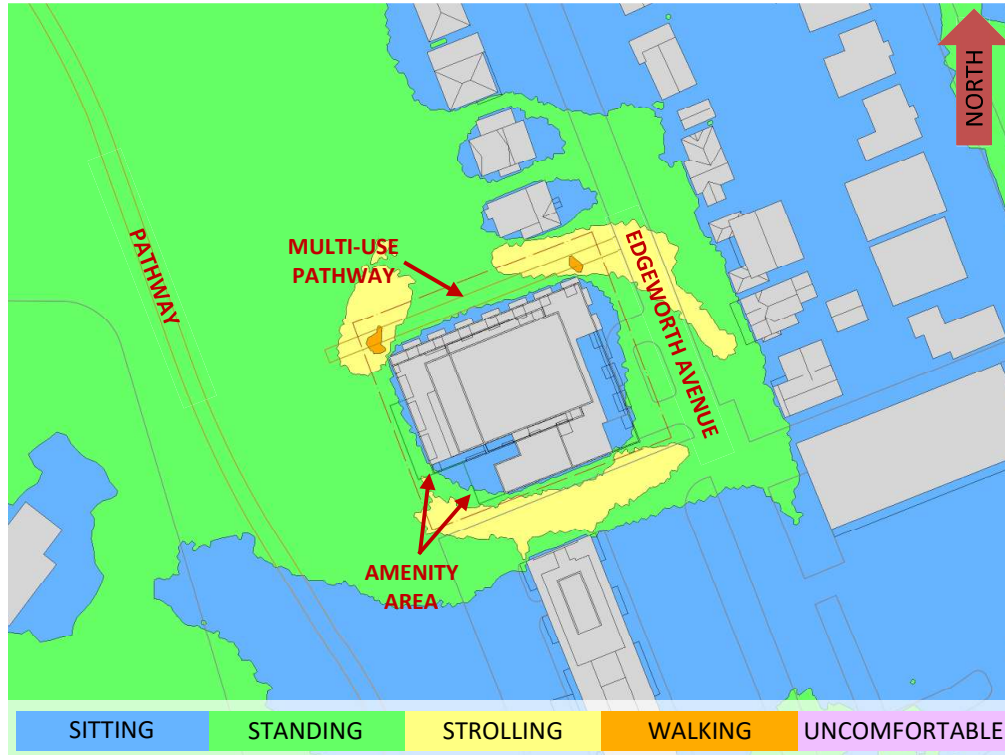


FIGURE 5B: AUTUMN – WIND COMFORT, GRADE LEVEL– EXISTING MASSING





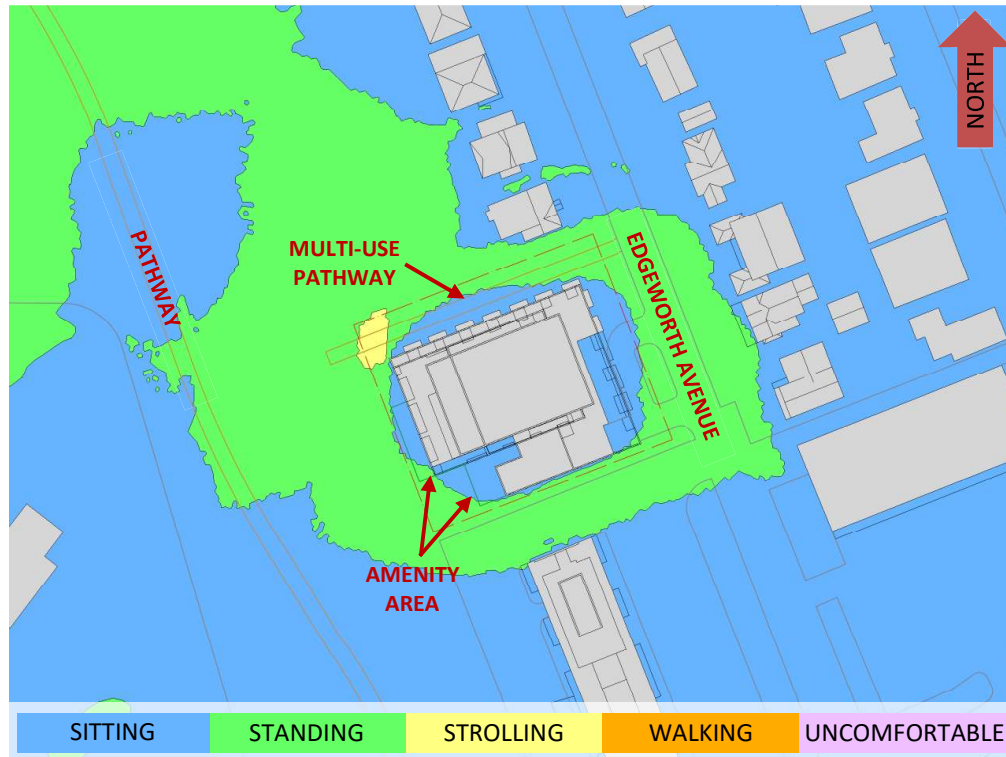


FIGURE 7: TYPICAL USE PERIOD – WIND COMFORT, GRADE LEVEL – PROPOSED MASSING

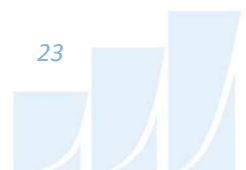




FIGURE 8A: SPRING – WIND COMFORT, LEVEL 23 AMENITY TERRACES

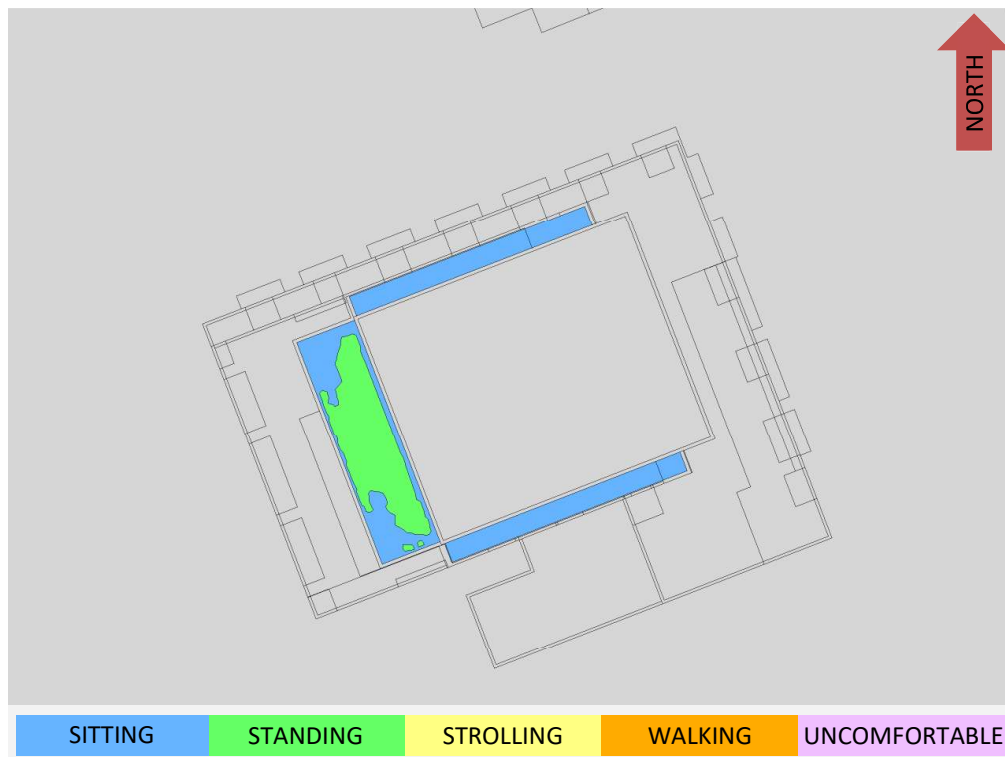


FIGURE 8B: SUMMER – WIND COMFORT, LEVEL 23 AMENITY TERRACES

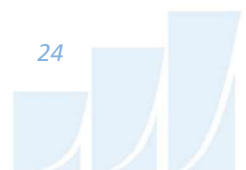
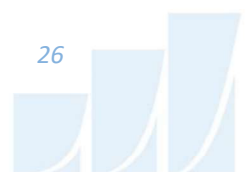




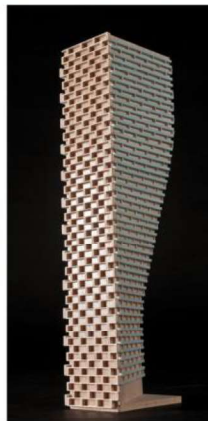


FIGURE 9: TYPICAL USE PERIOD – WIND COMFORT, LEVEL 23 AMENITY TERRACES



GRADIENTWIND

ENGINEERS & SCIENTISTS



APPENDIX A

SIMULATION OF THE ATMOSPHERIC BOUNDARY LAYER

SIMULATION OF THE ATMOSPHERIC BOUNDARY LAYER

The atmospheric boundary layer (ABL) is defined by the velocity and turbulence profiles according to industry standard practices. The mean wind profile can be represented, to a good approximation, by a power law relation, Equation (1), giving height above ground versus wind speed (1), (2).

$$U = U_g \left(\frac{Z}{Z_g} \right)^\alpha \quad \text{Equation (1)}$$

where U = mean wind speed, U_g = gradient wind speed, Z = height above ground, Z_g = depth of the boundary layer (gradient height), and α is the power law exponent.

For the model, U_g is set to 6.5 metres per second (m/s), which approximately corresponds to the 60% mean wind speed for Ottawa based on historical climate data and statistical analyses. When the results are normalized by this velocity, they are relatively insensitive to the selection of gradient wind speed.

Z_g is set to 540 m. The selection of gradient height is relatively unimportant, so long as it exceeds the building heights surrounding the subject site. The value has been selected to correspond to our physical wind tunnel reference value.

α is determined based on the upstream exposure of the far-field surroundings (that is, the area that is not captured within the simulation model).



Table 1 presents the values of α used in this study, while Table 2 presents several reference values of α . When the upstream exposure of the far-field surroundings is a mixture of multiple types of terrain, the α values are a weighted average with terrain that is closer to the subject site given greater weight.

TABLE 1: UPSTREAM EXPOSURE (ALPHA VALUE) VS TRUE WIND DIRECTION

Wind Direction (Degrees True)	Alpha Value (α)
0	0.22
22.5	0.23
45	0.25
67.5	0.25
90	0.25
112.5	0.25
135	0.25
157.5	0.24
180	0.24
202.5	0.24
225	0.25
247.5	0.23
270	0.22
292.5	0.20
315	0.20
337.5	0.21

TABLE 2: DEFINITION OF UPSTREAM EXPOSURE (ALPHA VALUE)

Upstream Exposure Type	Alpha Value (α)
Open Water	0.14-0.15
Open Field	0.16-0.19
Light Suburban	0.21-0.24
Heavy Suburban	0.24-0.27
Light Urban	0.28-0.30
Heavy Urban	0.31-0.33

The turbulence model in the computational fluid dynamics (CFD) simulations is a two-equation shear-stress transport (SST) model, and thus the ABL turbulence profile requires that two parameters be defined at the inlet of the domain. The turbulence profile is defined following the recommendations of the Architectural Institute of Japan for flat terrain (3).

$$I(Z) = \begin{cases} 0.1 \left(\frac{Z}{Z_g} \right)^{-\alpha-0.05}, & Z > 10 \text{ m} \\ 0.1 \left(\frac{10}{Z_g} \right)^{-\alpha-0.05}, & Z \leq 10 \text{ m} \end{cases} \quad \text{Equation (2)}$$

$$L_t(Z) = \begin{cases} 100 \text{ m} \sqrt{\frac{Z}{30}}, & Z > 30 \text{ m} \\ 100 \text{ m}, & Z \leq 30 \text{ m} \end{cases} \quad \text{Equation (3)}$$

where I = turbulence intensity, L_t = turbulence length scale, Z = height above ground, and α is the power law exponent used for the velocity profile in Equation (1).

Boundary conditions on all other domain boundaries are defined as follows: the ground is a no-slip surface; the side walls of the domain have a symmetry boundary condition; the top of the domain has a specified shear, which maintains a constant wind speed at gradient height; and the outlet has a static pressure boundary condition.

REFERENCES

- [1] P. Arya, "Chapter 10: Near-neutral Boundary Layers," in *Introduction to Micrometeorology*, San Diego, California, Academic Press, 2001.
- [2] S. A. Hsu, E. A. Meindl and D. B. Gilhousen, "Determining the Power-Law Wind Profile Exponent under Near-neutral Stability Conditions at Sea," vol. 33, no. 6, 1994.
- [3] Y. Tamura, H. Kawai, Y. Uematsu, K. Kondo, and T. Okhuma, "Revision of AIJ Recommendations for Wind Loads on Buildings," in *The International Wind Engineering Symposium, IWES 2003*, Taiwan, 2003.