



The Contractor shall verify and be responsible for all dimensions, DO NOT scale the drawing - any errors or omissions shall be reported to Stantec without delay.
The Copyrights to all designs and drawings are the property of Stantec. Reproduction or use for any purpose other than that authorized by Stantec is forbidden.

PROPOSED WATERMAIN
PROPOSED VALVE AND VALVE BOX
PROPOSED VALVE CHAMBER
PROPOSED REDUCER
PROPOSED FIRE HYDRANT
PROPOSED WATER PARK METER PER CITY OF OTTAWA STANDARD W31.1
PROPOSED SANITARY SEWER AND MH
PROPOSED STORM SEWER AND MH
PROPOSED SINGLE CATCHBASIN
PROPOSED DOUBLE CATCHBASIN
PROPOSED CATCHBASIN ELBOW PER CITY STD S31
PROPOSED AREA DRAIN / TRENCH DRAIN TO BE CONNECTED TO INTERNAL BUILDING MECHANICAL SYSTEM
EX/INT. WATERMAIN
EXISTING/FUTURE VALVE AND VALVE BOX
EXISTING/FUTURE VALVE CHAMBER
EXISTING/FUTURE REDUCER
EXISTING/FUTURE FIRE HYDRANT
EXISTING/FUTURE SANITARY SEWER
EXISTING/FUTURE STORM SEWER
EXISTING/FUTURE CATCHBASIN MANHOLE
EXISTING/FUTURE CATCHBASIN
PROPOSED DEPRESSIONED CURB LOCATIONS
PROPOSED BARRIER CURB
THERMAL INSULATION ON STORM SEWER WHERE COVER IS LESS THAN 1.5m. THERMAL INSULATION ON WATERMAIN WHERE COVER IS LESS THAN 0.2m AS PER W22.
WATER METER
REMOTE WATER METER
LANDSCAPE AREAS
ROAD CUT AS PER CITY OF OTTAWA STANDARD DETAIL R10
EXISTING STREET LIGHT CABLE
EXISTING BELL LINE
EXISTING ROGERS LINE
EXISTING GASMAIN

1. FINAL METER AND REMOTE METER LOCATIONS TO BE CONFIRMED BY THE MECHANICAL ENGINEERING CONSULTANT.
2. THE LOCATION OF UTILITIES IS APPROXIMATE ONLY AND THE EXACT LOCATION SHOULD BE DETERMINED BY CONSULTING THE MUNICIPAL AUTHORITIES AND UTILITY COMPANIES CONCERNED. THE CONTRACTOR SHALL PROVIDE THE LOCATION OF UTILITIES AND SHALL BE RESPONSIBLE FOR THEIR PROTECTION AND THE IMPLEMENTATION OF ANY NECESSARY PROCEDURES CALLED FOR IN THE APPROPRIATE STANDARD AND REGULATIONS.
3. INTERNAL PLUMBING SYSTEMS TO BE DESIGNED BY THE MECHANICAL ENGINEERING CONSULTANT.
4. STORMWATER MANAGEMENT TO BE PROVIDED THROUGH INTERNAL BUILDING MECHANICAL SYSTEMS:
 - PHASE 3 + 4 295 m³/MAX RELEASE RATE TO STORM SEWER + 21.3 L/s.
 - PHASE 5 + 6 194 m³/MAX RELEASE RATE TO STORM SEWER + 16.0 L/s.

STORAGE AND RELEASE RATE OF 100 L/S AS PER BUILDING MECHANICAL ENGINEERING DESIGN. PUMPING OF CISTERN IS ANTICIPATED.

2	REVISED PER NEW SITE PLAN	MJS	DT 25.09.23
1	REVISED PER NEW SITE PLAN	MJS	RB 24.07.19
0	ISSUED FOR SPA	MJS	RB 23.05.25

File Name: 160401676 DB.dwg	MJS	RB	MJS	23.03.31
	Dwn.	Chkd.	Dsgn.	YY.MM.DD

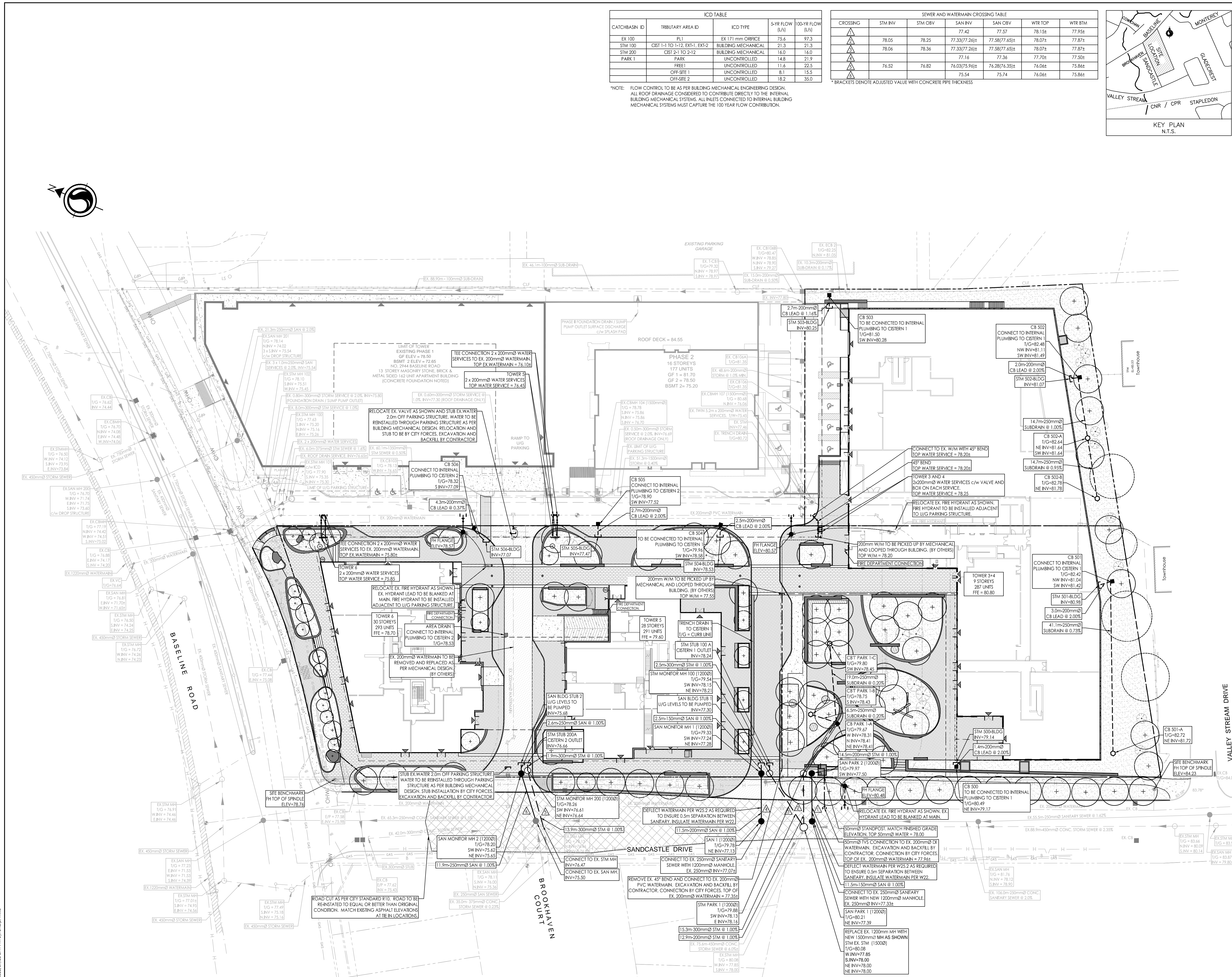
BRIGIL HOMES

BASELINE TOWERS 3-4-5-6
2946 BASELINE ROAD
OTTAWA, ON, CANADA

SITE SERVICING PLAN

Project No.	Scale
160401676	0 4 12 20m 1:400
Drawing No.	Sheet
	Revision

2



V:\01-604\active\160401676\design\drawing\160401676 DB.dwg

ORIGINAL SHEET - ARCH D