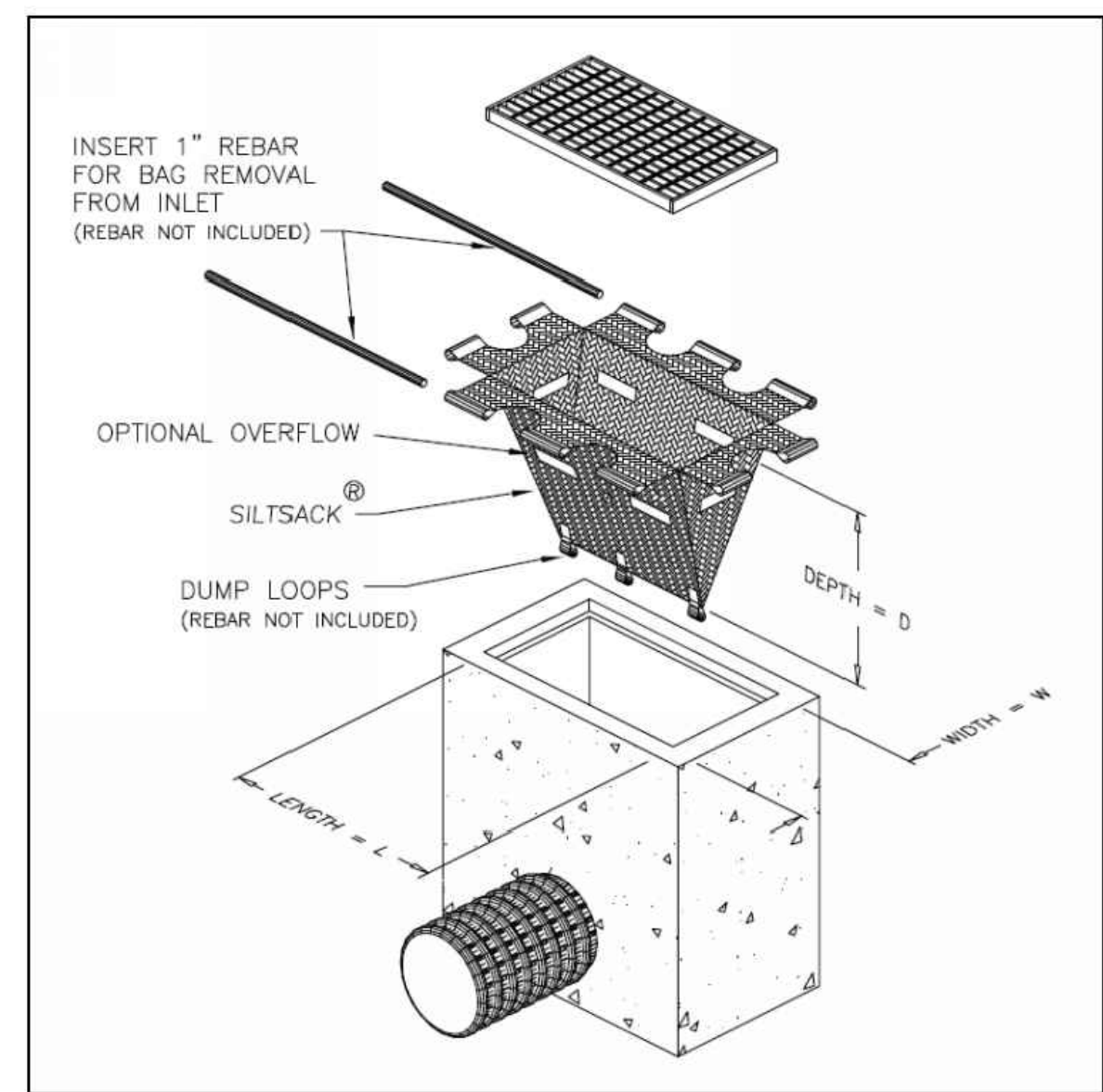
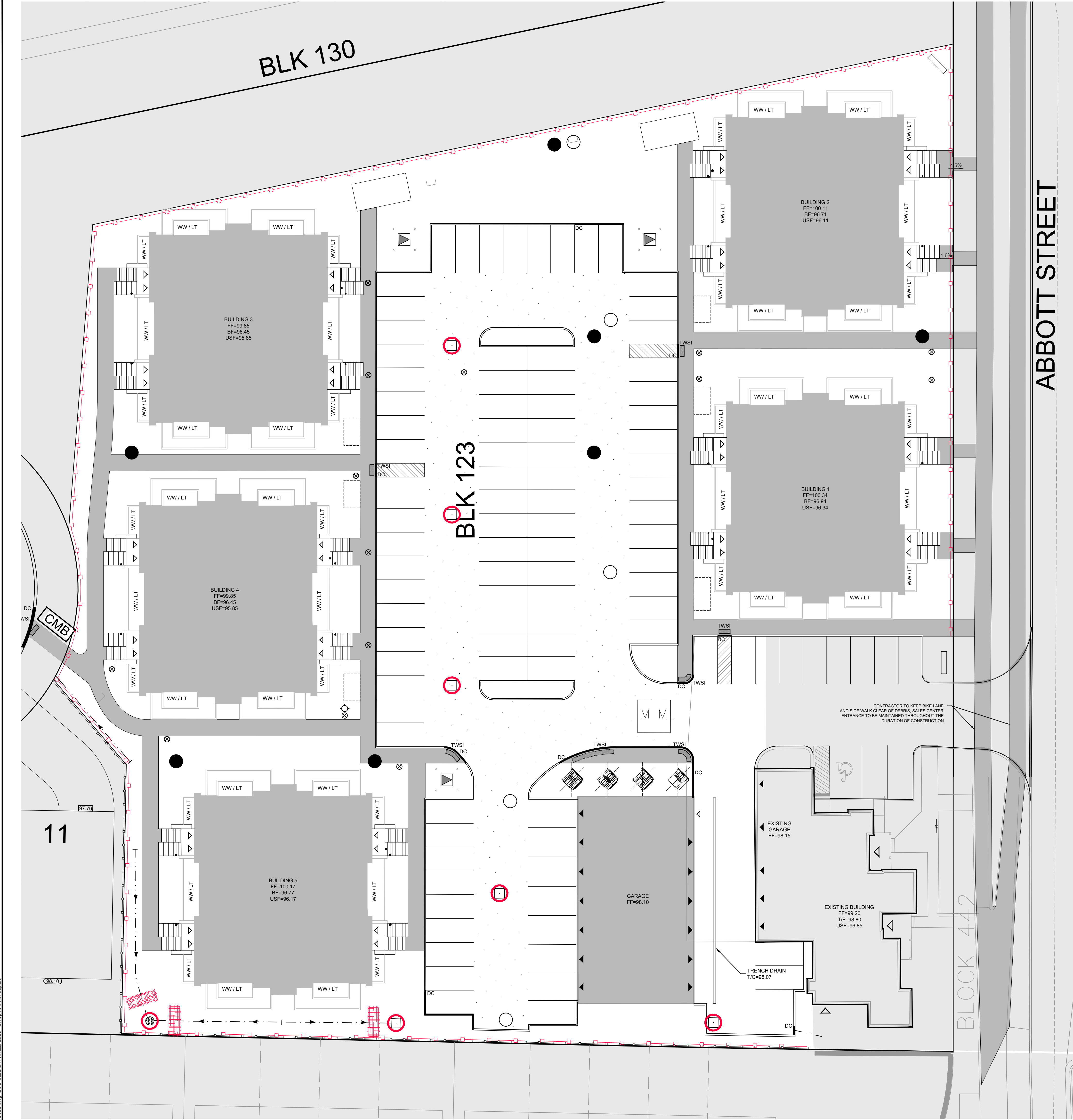


\\0201110037-CAD\Design\Black123110037-ESC123.dwg, ESC-SIZE B1, Jul 22, 2025 - 3:10pm, dmendes

NOTE:  
THE POSITION OF ALL POLE LINES, CONDUITS,  
WATERMANS, SEWERS AND OTHER  
UNDERGROUND AND OVERGROUND UTILITIES AND  
STRUCTURES IS NOT NECESSARILY SHOWN ON  
THE CONTRACT DRAWINGS, AND WHERE SHOWN,  
THE ACCURACY OF THE POSITION OF SUCH  
UTILITIES AND STRUCTURES IS NOT GUARANTEED.  
BEFORE STARTING WORK, DETERMINE THE EXACT  
LOCATION OF ALL SUCH UTILITIES AND  
STRUCTURES AND ASSUME ALL LIABILITY FOR  
DAMAGE TO THEM.



FILTER BAG DETAIL

NOT TO SCALE

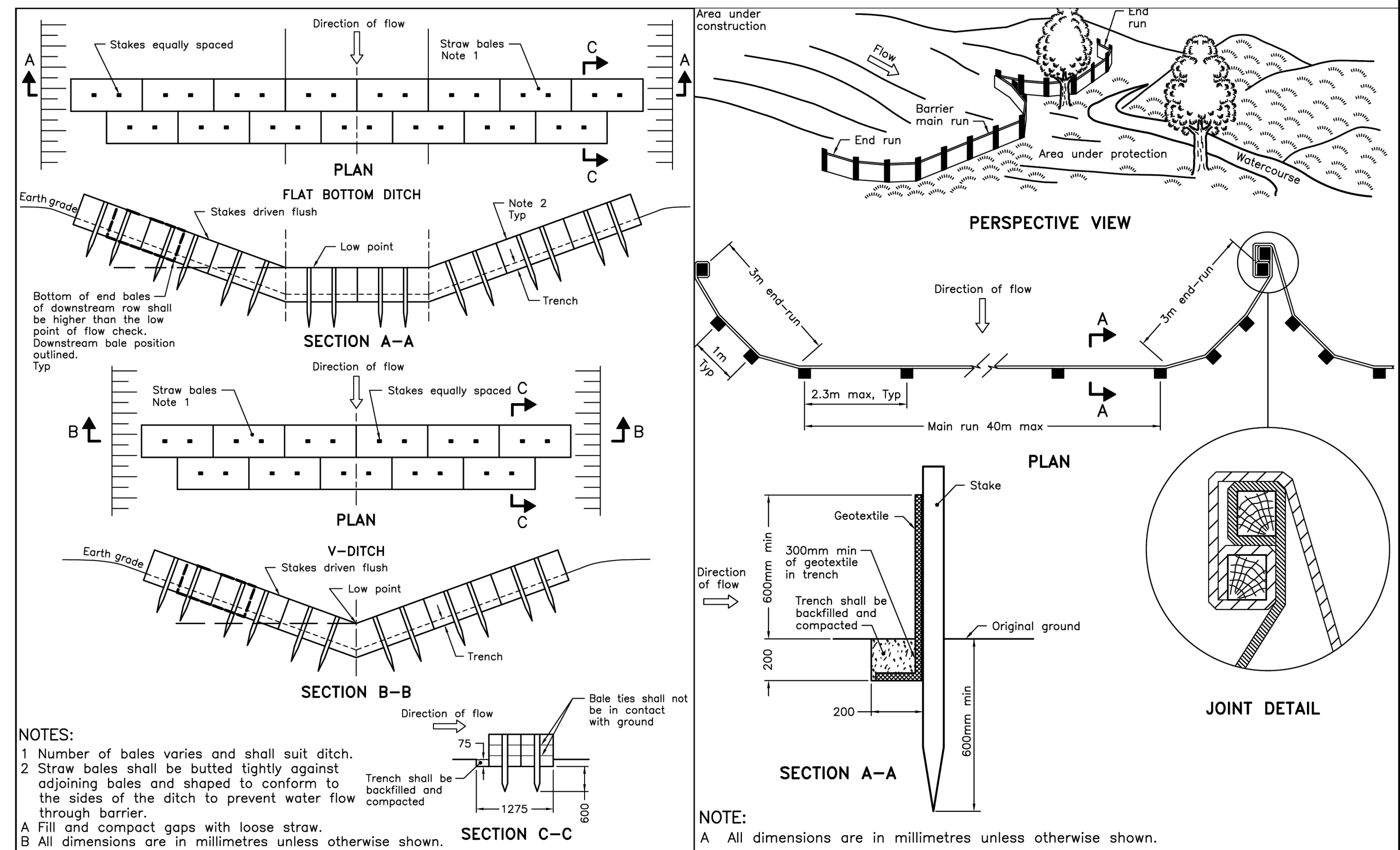
NORTH

KEY PLAN  
N.T.S.

EROSION AND SEDIMENT CONTROL NOTES:

1. THE OWNER AGREES TO PREPARE AND IMPLEMENT AN EROSION AND SEDIMENT CONTROL PLAN TO THE SATISFACTION OF THE CITY OF OTTAWA. APPROPRIATE TO THE SITE CONDITIONS. PRIOR TO UNDERTAKING ANY SITE ALTERATIONS (FILLING, GRADING, REMOVAL OF VEGETATION, ETC.) AND DURING ALL PHASES OF SITE PREPARATION AND CONSTRUCTION IN ACCORDANCE WITH THE CURRENT BEST MANAGEMENT PRACTICES FOR EROSION AND SEDIMENT CONTROL, SUCH AS BUT NOT LIMITED TO INSTALLING FILTER CLOTHS ACROSS MANHOLE/CATCHBASIN LIDS TO PREVENT SEDIMENTS FROM ENTERING STRUCTURES AND INSTALL AND MAINTAIN A LIGHT DUTY SILT FENCE BARRIER AS REQUIRED.
2. THE CONTRACTOR SHALL PLACE FILTER BAGS UNDER THE CATCHBASIN AND MANHOLE GRATES FOR THE DURATION OF CONSTRUCTION AND WILL REMAIN IN PLACE DURING ALL PHASES OF CONSTRUCTION.
3. SILT FENCING FOR ENTIRE PERIMETER OF SITE, SHALL BE UTILIZED TO CONTROL EROSION FROM THE SITE DURING CONSTRUCTION.
4. THE CONTRACTOR ACKNOWLEDGES THAT FAILURE TO IMPLEMENT EROSION AND SEDIMENT CONTROL MEASURES MAY BE SUBJECT TO PENALTIES IMPOSED BY ANY APPLICABLE REGULATORY AGENCY.
5. CONTRACTOR TO INSPECT ALL ESC DAILY AND IMMEDIATELY AFTER EVERY RAINFALL EVENT AND REPAIR ANY DAMAGED OR NON-FUNCTIONING MEASURES IMMEDIATELY.
6. THE PLAN IS TO BE CONSIDERED A "LIVING DOCUMENT" WHICH MAY BE MODIFIED IN THE EVENT THE EROSION AND SEDIMENT CONTROL MEASURES ARE INSUFFICIENT.
7. ROADWAYS ARE TO BE SWEEP AS REQUIRED OR AS DIRECTED BY THE ENGINEER AND/OR THE REPRESENTATIVE OF THE CITY OF OTTAWA.

	ESC Measure	Symbol	OPSD No.	During Construction		After Construction Prior to Final Acceptance		After Final Acceptance
				Installation Responsibility	Inspection Responsibility	Inspection/Maintenance Responsibility	Removal Responsibility	Inspection/Maintenance Responsibility
Temporary Measures	Light-Duty Silt Fence		219.110	Developer's Contractor	Developer's Contractor	Builder	Builder	N/A
	Straw Bale Flow Check Dam		219.180	Developer's Contractor	Developer's Contractor	Builder	Builder	N/A
	Filter Bags		Erosion and Sediment Control Notes and Details	Developer's Contractor	Developer's Contractor	Builder	Builder	N/A
	Mud Mats		N/A	Developer's Contractor	Developer's Contractor	N/A	N/A	N/A
Permanent Measures	Roof Leaders Directed to Grassed Areas	N/A	N/A	Builder	Builder	Developer/Site Owner	N/A	Developer/Site Owner



ONTARIO PROVINCIAL STANDARD DRAWING  
Nov 2021 Rev 3  
STRAW BALE FLOW CHECK DAM  
OPSD 219.180

ONTARIO PROVINCIAL STANDARD DRAWING  
Nov 2021 Rev 3  
LIGHT-DUTY SILT FENCE BARRIER  
OPSD 219.110

ABBOTT STREET

BLK 123

BLK 130

11

BLOCK 442

**NOVATECH**  
Engineers, Planners & Landscape Architects  
Suite 200, 240 Michael Cowpland Drive  
Ottawa, Ontario, Canada K2M 1P6  
Telephone (613) 254-9643  
Facsimile (613) 254-5867  
Website www.novatech-eng.com

LOCATION  
(METRIC HOMES) SUBDIVISION - BLOCK 123  
4829 ABBOTT ST EAST

DRAWING NAME  
EROSION & SEDIMENT  
CONTROL PLAN

PROJECT No: 110037  
REV  
DRAWING No: 110037-ESC

SCALE  
1:200  
0 2 4 6 8

FOR REVIEW ONLY

DESIGN  
CHECKED  
DRAWN  
CHECKED  
APPROVED

1. ISSUED FOR REVIEW  
JULY 22/25  
ARM