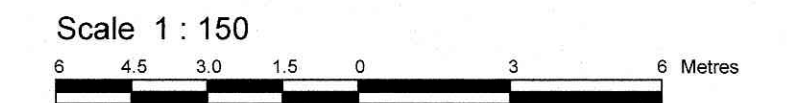


PART OF LOT 4 CONCESSION 3 (OTTAWA FRONT) Geographic Township of Gloucester CITY OF OTTAWA

Surveyed by Annis, O'Sullivan, Vollebek Ltd.

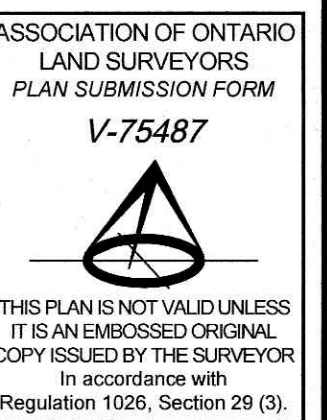


Metric DISTANCES SHOWN ON THIS PLAN ARE IN METRES AND CAN BE CONVERTED TO FEET BY DIVIDING BY 0.3048

Surveyor's Certificate

I CERTIFY THAT: 1. This survey and plan are correct and in accordance with the Surveys Act, the Surveyors Act and the regulations made under them. 2. The survey was completed on the 31st day of May, 2024.

June 10, 2024 Date Wen Jiang Ontario Land Surveyor



Notes & Legend

- Denotes Survey Monument Planted
SIB Standard Iron Bar
SSIB Short Standard Iron Bar
IS Iron Bar
CP Concrete Pin
(WIT) Witness
Meas. Measured
(AOG) Annis, O'Sullivan, Vollebek Ltd.
(P1) Plan 4R-27208
(P2) Plan 4R-24060
(P4) Plan 4R-28602
RWT Timber Retaining Wall
CLF Chain Link Fence
BF Board Fence
C/L Centreline
T/G Top of Grate
CB Catch Basin
CBI Catch Basin - Inlet
MH-S Maintenance Hole (Storm Sewer)
MH-S Maintenance Hole (Sanitary)
VC Valve Chamber (Watermain)
WV Water Valve
OHV Overhead Wires
UP Utility Pole
AN Anchor
AC Air Conditioner
GM Gas Meter
HM Hydro Meter
B Bollard
S Sign
G Gate
MB Mail Box
Deciduous Tree
Coniferous Tree
Diameter
Location of Elevations
Location of Top of Curb Elevations
Location of Top of Retaining Wall Elevations

Bearings are grid, derived from Can-Net 2018 Real Time Network GPS observations and are referenced to Specified Control Points 01919680184 and 019198434761, MTM Zone 9 (76°30' West Longitude) NAD-83 (original).

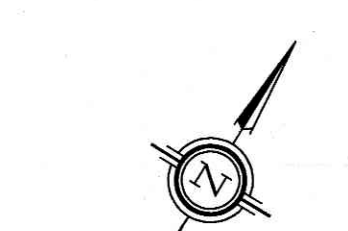
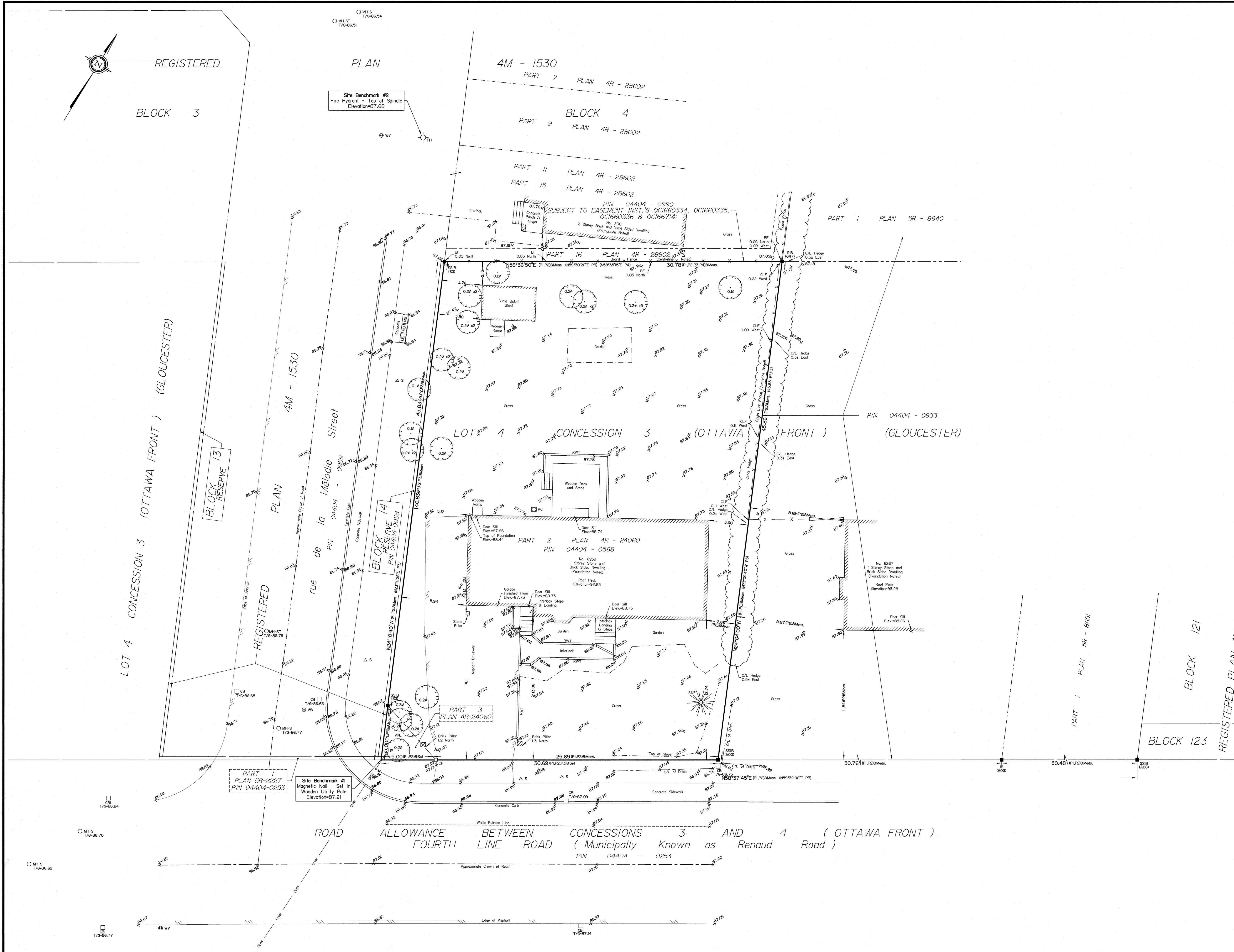
ELEVATION NOTES

1. Elevations shown are geodetic and are referred to the CGVD28 geodetic datum. 2. It is the responsibility of the user of this information to verify that the job benchmark has not been altered or disturbed and that its relative elevation and description agrees with the information shown on this drawing.

UTILITY NOTES

1. This drawing cannot be accepted as acknowledging all of the utilities and it will be the responsibility of the user to contact the respective utility authorities for confirmation. 2. Only visible surface utilities were located. 3. A field location of underground plant by the pertinent utility authority is mandatory before any work involving breaking ground, probing, excavating, etc.

ANNIS, O'SULLIVAN, VOLLEBEK LTD. 14 Concourse Gate, Suite 500 Nepean, Ont. K2E 7S6 Phone: (613) 727-0850 / Fax: (613) 727-1079 Email: Nepean@asvl.com



REGISTERED BLOCK 3

PLAN

4M - 1530 PART 7 PLAN 4R - 28602

BLOCK 4 PART 9 PLAN 4R - 28602

PART 11 PLAN 4R - 28602 PART 15 PLAN 4R - 28602

PART 1 PLAN 5R - 8940

SUBJECT TO EASEMENT INST.'S OC1660334, OC1660335, OC1660336 & OC166744

PART 16 PLAN 4R - 28602

LOT 4 CONCESSION 3 (OTTAWA FRONT) (GLOUCESTER)

PART 2 PLAN 4R - 24060 PIN 04404 - 0568

PART 3 PLAN 4R-24060

PART 1 PLAN 5R-2227 PIN 04404-0253

Site Benchmark #1 Magnetic Nail - Set in Wooden Utility Pole Elevation=67.21

Site Benchmark #2 Fire Hydrant - Top of Spindle Elevation=67.69

LOT 4 CONCESSION 3 (OTTAWA FRONT) (GLOUCESTER)

4M - 1530 rue de la Melodie Street

BLOCK RESERVE 13

BLOCK RESERVE 14

PLAN 5R - 8955

BLOCK 121

BLOCK 123

REGISTERED PLAN 4M-1545

ROAD ALLOWANCE BETWEEN CONCESSIONS 3 AND 4 (OTTAWA FRONT) FOURTH LINE ROAD (Municipally Known as Renaud Road) PIN 04404 - 0253

Site Benchmark #1 Magnetic Nail - Set in Wooden Utility Pole Elevation=67.21

Site Benchmark #1 Magnetic Nail - Set in Wooden Utility Pole Elevation=67.21

Site Benchmark #2 Fire Hydrant - Top of Spindle Elevation=67.69

Site Benchmark #1 Magnetic Nail - Set in Wooden Utility Pole Elevation=67.21

Site Benchmark #1 Magnetic Nail - Set in Wooden Utility Pole Elevation=67.21

Site Benchmark #2 Fire Hydrant - Top of Spindle Elevation=67.69

Site Benchmark #1 Magnetic Nail - Set in Wooden Utility Pole Elevation=67.21

Site Benchmark #1 Magnetic Nail - Set in Wooden Utility Pole Elevation=67.21

Site Benchmark #2 Fire Hydrant - Top of Spindle Elevation=67.69

Site Benchmark #1 Magnetic Nail - Set in Wooden Utility Pole Elevation=67.21

Site Benchmark #1 Magnetic Nail - Set in Wooden Utility Pole Elevation=67.21

Site Benchmark #2 Fire Hydrant - Top of Spindle Elevation=67.69