

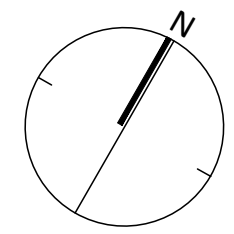
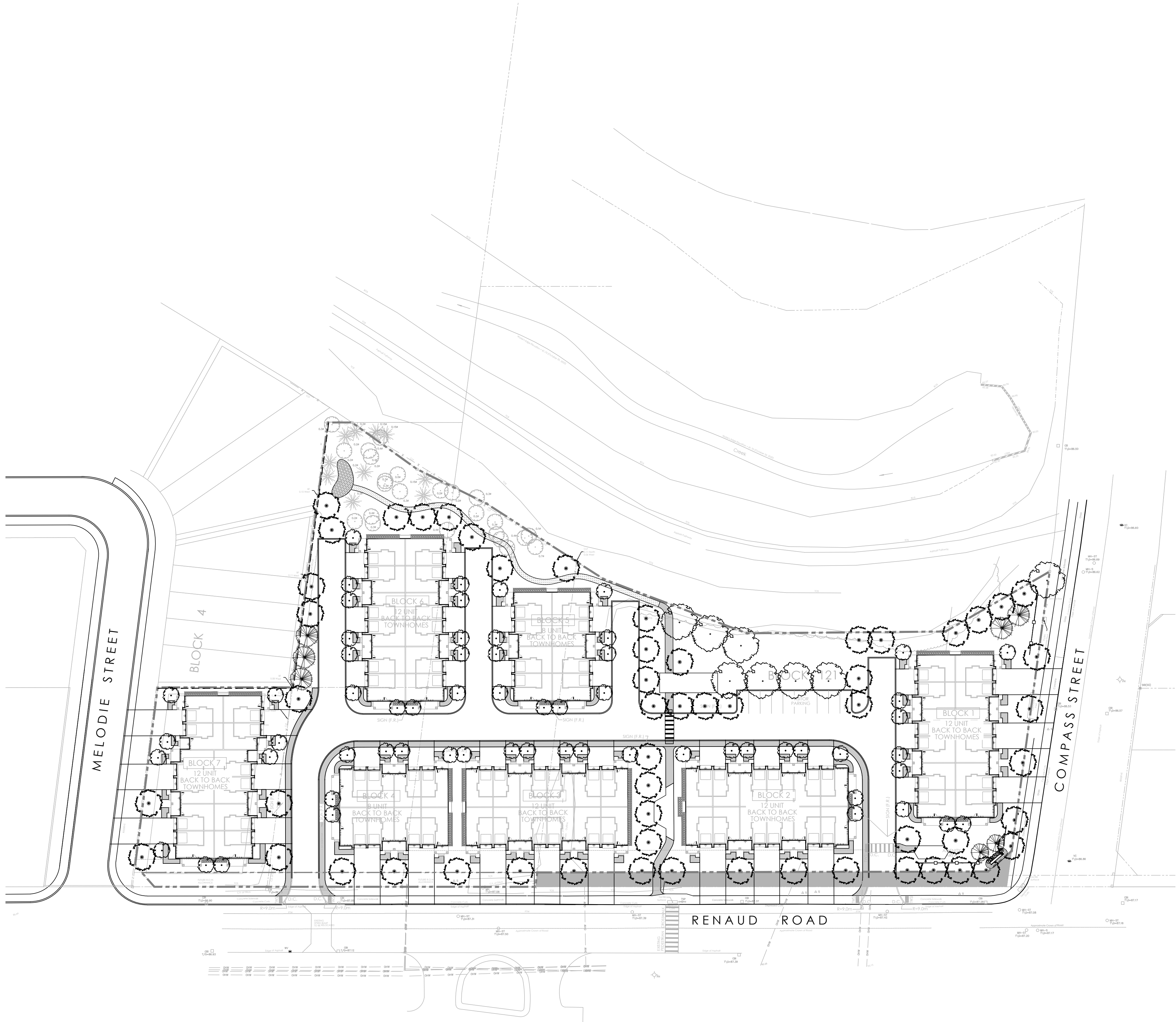
RICHCRAFT TRAILEDGE BLOCK 121

RICHCRAFT

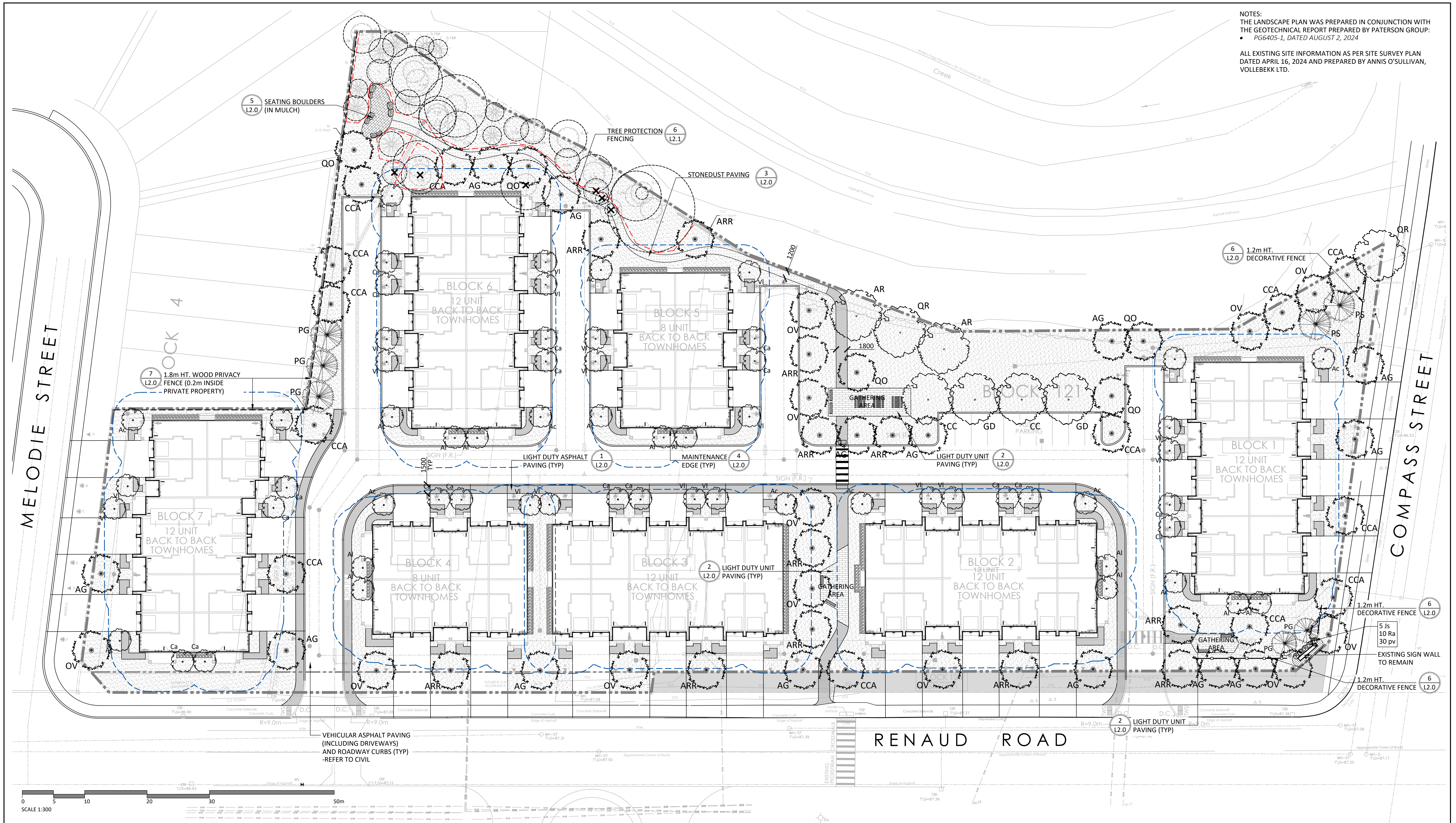
NAK 
design strategies

LIST OF DRAWINGS:

- L1.0 - LANDSCAPE PLAN
- L1.1 - TREE CANOPY CALCULATIONS AND SOIL VOLUMES
- L2.0 - DETAILS
- L2.1 - DETAILS



KEYMAP
NTS



NOTES:
 THE LANDSCAPE PLAN WAS PREPARED IN CONJUNCTION WITH THE GEOTECHNICAL REPORT PREPARED BY PATERSON GROUP. PG6405-1, DATED AUGUST 2, 2024
 ALL EXISTING SITE INFORMATION AS PER SITE SURVEY PLAN DATED APRIL 16, 2024 AND PREPARED BY ANNIS O'SULLIVAN, VOLLEBEKK LTD.

Contractor shall check all dimensions on the work and report any discrepancy to the Landscape Architect before proceeding. All drawings and specifications are the property of the Landscape Architect and must be returned at the completion of the work. This drawing is not to be used for construction until signed by the Landscape Architect.

LEGEND

--- PROPERTY LINE
 --- GEOTECHNICAL FOUNDATION SETBACK (4.5m)

FENCING

--- DECORATIVE FENCE
 --- PRIVACY FENCE
 --- TREE PROTECTION FENCE

PLANTING

○ EXISTING TREE
 ✕ EXISTING TREE TO BE REMOVED (REFER TO TREE CONSERVATION REPORT)
 ○ APPROXIMATE EXISTING TREE CRZ
 ○ LARGE DECIDUOUS TREE
 ○ MEDIUM DECIDUOUS TREE
 ○ SMALL DECIDUOUS TREE
 ○ CONIFEROUS TREE
 ○ TREE FORM SHRUB
 ○ DECIDUOUS/CONIFEROUS SHRUB
 ○ GRASSES/PERENNIALS
 ■ SODDING
 ■ PLANTING BED

PAVING

■ LIGHT DUTY ASPHALT WALKWAYS
 ■ PRECAST UNIT PAVERS
 ■ STONEDUST PATHWAY
 ■ MULCH
 ■ RIVERSTONE PAVING
 ■ PRECAST EDGER

DETAIL KEY

① DETAIL NO.
 L1 SHEET NO.

3	Issued for First Submission	Jun 11/25
2	Issued for Coordination	May 01/25
1	Issued for Coordination	Mar 26/25
No.	Description	Date

OWNERSHIP	PROFESSIONAL	2280 ST. LAURENT BLVD. SUITE 201, OTTAWA, ON
ARCHITECT	M. DAVID BLAKELY ARCHITECT INC.	2200 PRINCE OF WALES DR. SUITE 101, OTTAWA, ON
LANDSCAPE ARCHITECT	NAK DESIGN STRATEGIES	1285 WELLINGTON ST., OTTAWA, ON
CIVIL/SERVICING	TEL ENGINEERING	5400 CANOVA RD., OTTAWA, ON

PROPERTY INFORMATION
 REGISTERED PLAN 4M 1245 PART OF LOT 4 CONVESSION 3 (OTTAWA FRONT), GEOGRAPHIC TOWNSHIP OF GLOUCESTER CITY OF OTTAWA

ASSOCIATION OF LANDSCAPE ARCHITECTS
 ONTARIO
 MEMBER
 NAK

NAK
 design strategies
 1285 WELLINGTON STREET, OTTAWA, ON K1Y 3A8 CANADA
 T 613.237.2345
 Project

Trailsedge Block 121
 6273 Renaud Rd, Ottawa ON

Title
 LANDSCAPE PLAN

Date	2025-01-28	Sheet	L1.0
Scale	1:300	Drawn	SW
Checked	MK	Job No.	24-400

PLANT LIST

KEY	BOTANICAL NAME	COMMON NAME	QTY	SIZE	REMARKS	NATIVE
DECIDUOUS TREES - LARGE (15-30M HEIGHT) - TOTAL: 8 (PRIVATELY OWNED)						
AR	ACER RUBRUM	RED MAPLE	2	70mm	B&B	Y
CC	CARYA CORDIFORMIS	BITTERNUT HICKORY	2	70mm	B&B	Y
GD	GYMNOCALADUS DIOICUS	KENTUCKY COFFEE TREE	2	70mm	B&B	Y
QR	QUERCUS RUBRA	RED OAK	2	70mm	B&B	Y
DECIDUOUS TREES - MEDIUM (8-14M HEIGHT) - TOTAL: 56 (PRIVATELY OWNED)						
AG	AESCULUS GLABRA	OHIO BUCKEYE	14	70mm	B&B	Y
ARR	ACER RUBRUM 'REDPOINTE'	REDPOINTE RED MAPLE	12	70mm	B&B	Y
CCA	CARPINUS CAROLINIANA	BLUE BEECH	13	50mm	B&B	Y
OV	OSTRYA VIRGINIANA	IRONWOOD	12	50mm	B&B	Y
QO	QUERCUS PRINUS	CHESNUT OAK	5	50mm	B&B	Y
CONIFEROUS TREES - TOTAL: 7 (PRIVATELY OWNED)						
PG	PICEA GLAUCA	WHITE SPRUCE	5	200cm	B&B	Y
PS	PINUS STROBUS	WHITE PINE	2	200cm	B&B	Y

MULTISTEM SHRUBS - TOTAL: 67 (PRIVATELY OWNED)

Ac	AMELANCHIER CANADENSIS	SERVICEBERRY	16	125cm HT	PT, CLUMP	Y
Al	AMELANCHIER LAEVIS	ALLEGHENY SERVICEBERRY	15	125cm HT	PT, CLUMP	Y
Ca	CORNUS ALTERNIFOLIA	PAGODA DOGWOOD	18	125cm HT	PT, CLUMP	Y
Vi	VIBURNUM LENTAGO	NANNYBERRY	18	125cm HT	PT, CLUMP	Y
CONIFEROUS SHRUBS - TOTAL: 5 (PRIVATELY OWNED)						
Js	JUNIPERUS SCOPULORUM 'WICHITA BLUE'	WICHITA BLUE JUNIPER	5	3 GAL.	POTTED	Y
DECIDUOUS SHRUBS - TOTAL: 10 (PRIVATELY OWNED)						
Ra	RHUS AROMATICA 'GRO-LOW'	GRO-LOW FRAGRANT SUMAC	10	3 GAL.	POTTED	Y
GRASSES/PERENNIALS - TOTAL: 30 (PRIVATELY OWNED)						
pv	PANICUM VIRGATUM	SWITCHGRASS	30	1 GAL.	POTTED	Y

GENERAL NOTES:

- ALL PLANT MATERIAL SHALL BE NURSERY GROWN STOCK UNLESS OTHERWISE NOTED.
- TREES TO HAVE A MINIMUM 1800 CLEAR STEM ABOVE GRADE.
- CONTRACTOR TO MAKE GOOD ALL EXISTING AREAS DAMAGED BY HIS WORK TO THE SATISFACTION OF THE CONTRACTOR.
- ALL PLANT MATERIAL SHALL BE WARRANTIED FOR TWO YEARS FROM THE DATE OF SUBSTANTIAL COMPLETION.
- CONTRACTOR TO VERIFY LOCATION OF ALL SERVICES PRIOR TO ANY EXCAVATION.
- ANY PROPOSED SUBSTITUTIONS OF PLANT SPECIES SHALL BE MADE WITH PLANTS OF EQUIVALENT OVERALL FORM, HEIGHT, BRANCHING HABIT, FLOWER, LEAF, COLOR, FRUIT AND CULTURE AND ONLY AFTER APPROVAL OF THE LANDSCAPE ARCHITECT.

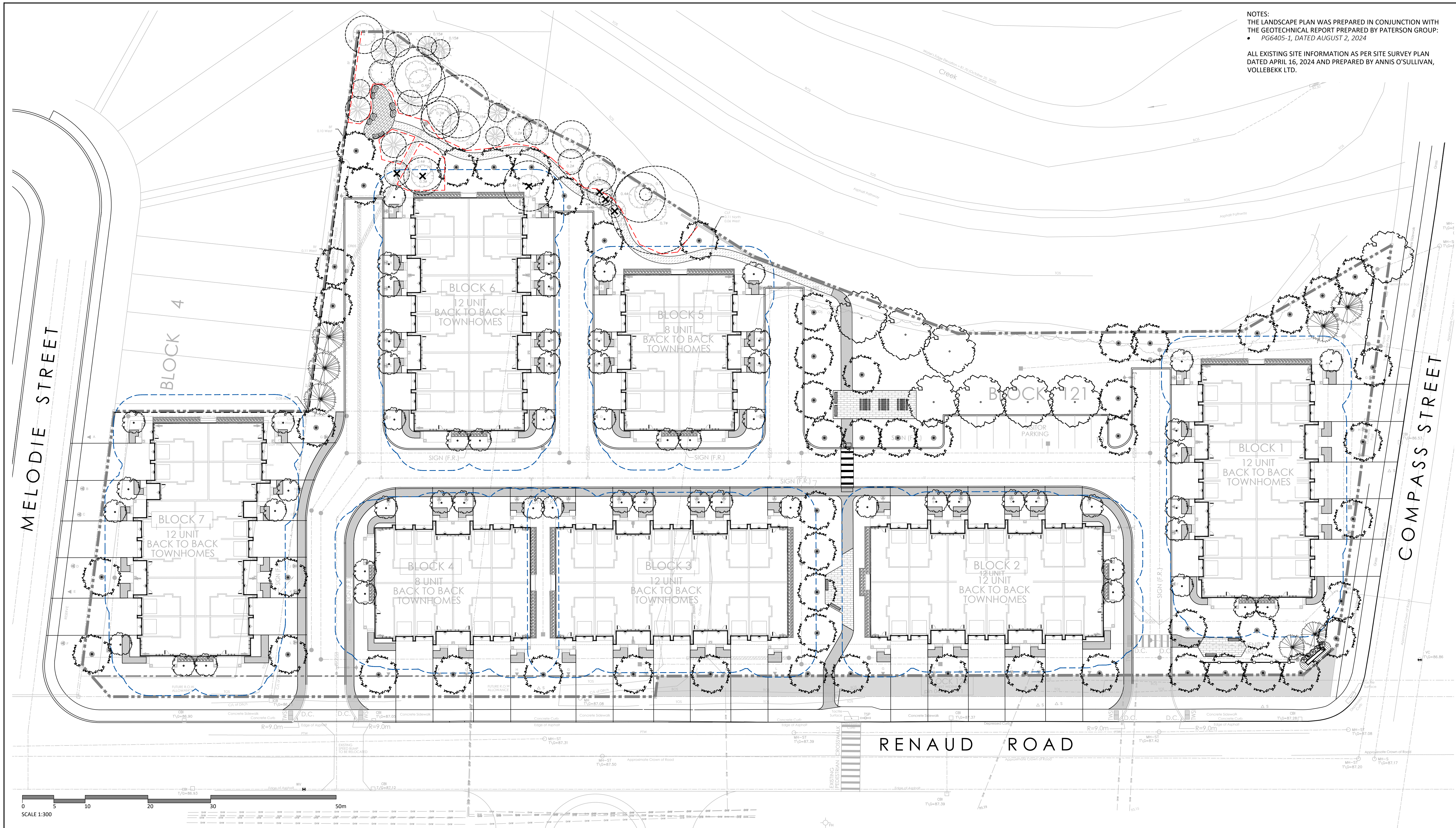
TREE PLANTING IN MARINE CLAY SOILS

THE LANDSCAPE CONSIDERATIONS CONTAINED WITHIN SEC. 6.8 OF PATERSON GROUP'S GEOTECHNICAL INVESTIGATION, DATED AUGUST 2, 2024.

- THIS LANDSCAPE PLAN CONFORMS WITH THE TREE-TO-FOUNDATION SETBACK, SOIL VOLUME, AND SURFACE-GRADING REQUIREMENTS OUTLINED IN THE CITY OF OTTAWA'S GUIDELINES FOR TREE PLANTING IN SENSITIVE MARINE CLAY SOILS (2017), BASED ON THE FINDINGS OUTLINED IN THE PROJECT GEOTECHNICAL REPORT BY PATERSON GROUP (REPORT PG6405-1 DATED AUGUST 2, 2024).
- ADDITIONAL REQUIREMENTS OUTLINED IN THE CITY OF OTTAWA'S GUIDELINES FOR TREE PLANTING IN SENSITIVE MARINE CLAY SOILS (2017), INCLUDING USF DEPTH, FOUNDATION WALL REINFORCEMENT, AND SUBDIVISION GRADING, SHOULD BE CONFIRMED BY THE PROJECT ENGINEER(S).

CITY FILE N° XXX-XX-XXXX

PLAN N° XXXXX



NOTES:
 THE LANDSCAPE PLAN WAS PREPARED IN CONJUNCTION WITH THE GEOTECHNICAL REPORT PREPARED BY PATERSON GROUP: PG6405-1, DATED AUGUST 2, 2024
 ALL EXISTING SITE INFORMATION AS PER SITE SURVEY PLAN DATED APRIL 16, 2024 AND PREPARED BY ANNIS O'SULLIVAN, VOLLEBEKK LTD.

LEGEND

- PROPERTY LINE
- GEOTECHNICAL FOUNDATION SETBACK (4.5m)

FENCING

- DECORATIVE FENCE
- PRIVACY FENCE
- TREE PROTECTION FENCE

PLANTING

- EXISTING TREE
- EXISTING TREE TO BE REMOVED (REFER TO TREE CONSERVATION REPORT)
- APPROXIMATE EXISTING TREE CRZ
- LARGE DECIDUOUS TREE
- MEDIUM DECIDUOUS TREE
- SMALL DECIDUOUS TREE
- CONIFEROUS TREE
- TREE FORM SHRUB
- DECIDUOUS/CONIFEROUS SHRUB
- GRASSES/PERENNIALS
- SODDING
- PLANTING BED

PAVING

- LIGHT DUTY ASPHALT WALKWAYS
- PRECAST UNIT PAVERS
- STONEDUST PATHWAY
- MULCH
- RIVERSTONE PAVING
- PRECAST EDGER

DETAIL KEY

- DETAIL NO.
- SHEET NO.

3	Issued for First Submission	Jun 11/25
2	Issued for Coordination	May 01/25
1	Issued for Coordination	Mar 26/25
No.	Description	Date

Revision

City Approval Stamp		OWNERSHIP PATERSON GROUP 2280 ST. LAURENT BLVD. SUITE 201, OTTAWA ON
		ARCHITECT M. DAVID BLAKEY ARCHITECT INC. 200 PRINCE OF WALES DR. SUITE 101, OTTAWA ON
		LANDSCAPE ARCHITECT NAK DESIGN STRATEGIES 1285 WELLINGTON ST., OTTAWA, ON
		CIVIL/SERVICING LIL ENGINEERING 5400 CANOVA RD., OTTAWA, ON

PROPERTY INFORMATION
 REGISTERED PLAN IN PART PART OF LOT 4 CONVESSION 3 (OTTAWA FRONT), GEOGRAPHIC TOWNSHIP OF GLOUCESTER CITY OF OTTAWA

NAK
 design strategies
 1285 WELLINGTON STREET, OTTAWA, ON K1Y 3A8 CANADA
 # 613.237.2345
 NAKDESIGNSTRATEGIES.COM

Trailsedge Block 121
 6273 Renaud Rd, Ottawa ON

TREE CANOPY CALCULATIONS AND SOIL VOLUMES

Date	2025-01-28	Sheet	
Scale	1:300		
Drawn	SW		
Checked	MK		
Job No.	24-400		

L1.0

PLAN N° XXXXX

GENERAL NOTES:

- ALL PLANT MATERIAL SHALL BE NURSERY GROWN STOCK UNLESS OTHERWISE NOTED.
- TREES TO HAVE A MINIMUM 1800 CLEAR STEM ABOVE GRADE.
- CONTRACTOR TO MAKE GOOD ALL EXISTING AREAS DAMAGED BY HIS WORK TO THE SATISFACTION OF THE CONTRACTOR.
- ALL PLANT MATERIAL SHALL BE WARRANTIED FOR TWO YEARS FROM THE DATE OF SUBSTANTIAL COMPLETION.
- CONTRACTOR TO VERIFY LOCATION OF ALL SERVICES PRIOR TO ANY EXCAVATION.
- ANY PROPOSED SUBSTITUTIONS OF PLANT SPECIES SHALL BE MADE WITH PLANTS OF EQUIVALENT OVERALL FORM, HEIGHT, BRANCHING HABIT, FLOWER, LEAF, COLOR, FRUIT AND CULTURE AND ONLY AFTER APPROVAL OF THE LANDSCAPE ARCHITECT.

TREE PLANTING IN MARINE CLAY SOILS

THE LANDSCAPE CONSIDERATIONS CONTAINED WITHIN SEC. 6.8 OF PATERSON GROUP'S GEOTECHNICAL INVESTIGATION, DATED AUGUST 2, 2024.

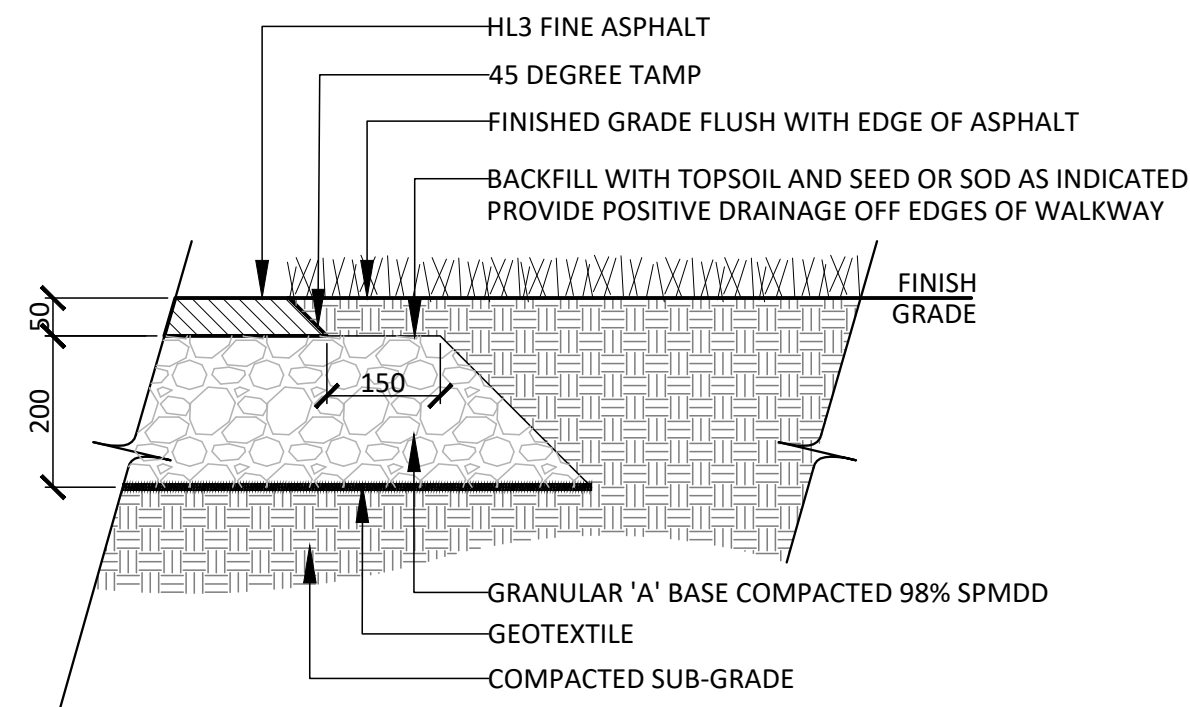
1. THIS LANDSCAPE PLAN CONFORMS WITH THE TREE-TO-FOUNDATION SETBACK, SOIL VOLUME, AND SURFACE-GRADING REQUIREMENTS OUTLINED IN THE CITY OF OTTAWA'S GUIDELINES FOR TREE PLANTING IN SENSITIVE MARINE CLAY SOILS (2017), BASED ON THE FINDINGS OUTLINED IN THE PROJECT GEOTECHNICAL REPORT BY PATERSON GROUP (REPORT PG6405-1 DATED AUGUST 2, 2024).

2. ADDITIONAL REQUIREMENTS OUTLINED IN THE CITY OF OTTAWA'S GUIDELINES FOR TREE PLANTING IN SENSITIVE MARINE CLAY SOILS (2017), INCLUDING USF DEPTH, FOUNDATION WALL REINFORCEMENT, AND SUBDIVISION GRADING, SHOULD BE CONFIRMED BY THE PROJECT ENGINEER(S).

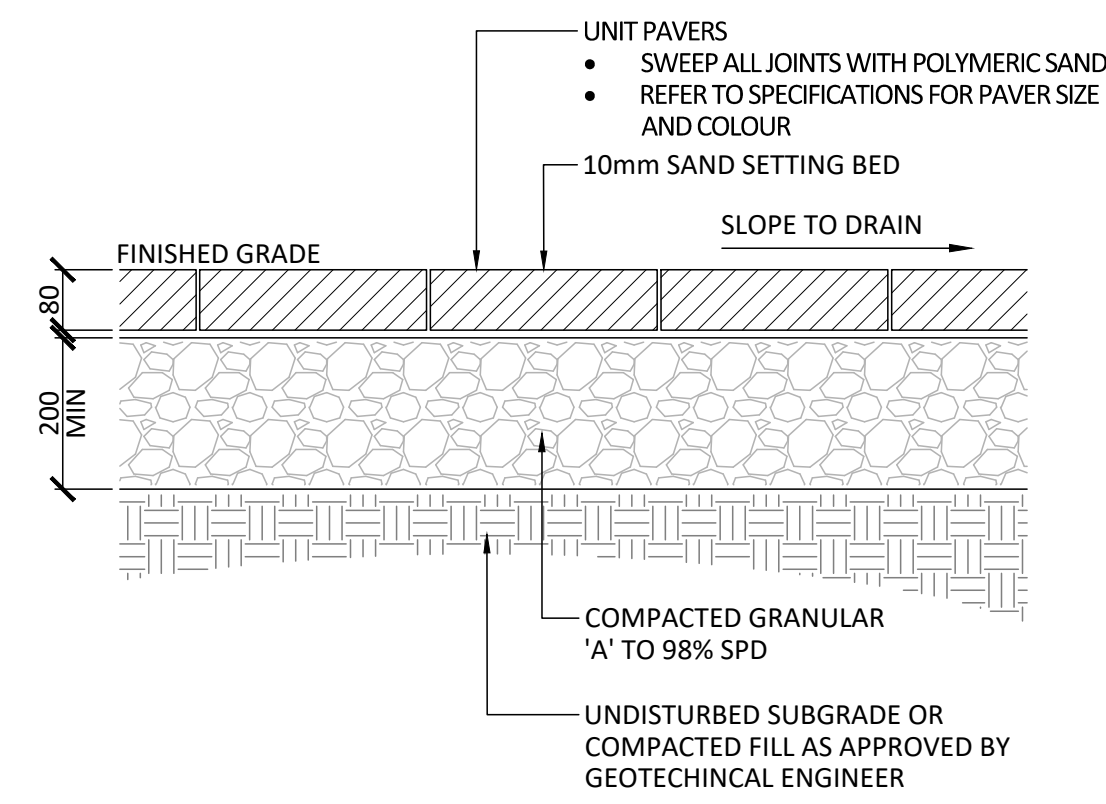
SOIL VOLUME PROJECTIONS (NTS)*	TREE SOIL VOLUMES		
	SINGLE	MULTIPLE	CLAY SOILS
SMALL			
MEDIUM/CONIFER			
LARGE			

CANOPY PROJECTIONS (NTS)	PROPOSED TREE CANOPY PROJECTIONS		
	TREE TYPE/SIZE	CROWN AREA PER TREE STANDARD RANGE (m²)	CROWN AREA PER TREE USED FOR CALC. (m²)
LARGE	LARGE (8)	135-250*	192
	MEDIUM (66)	35-135*	85
	SMALL (0)	5-35*	20
	CONIFER (7)	45-96*	70

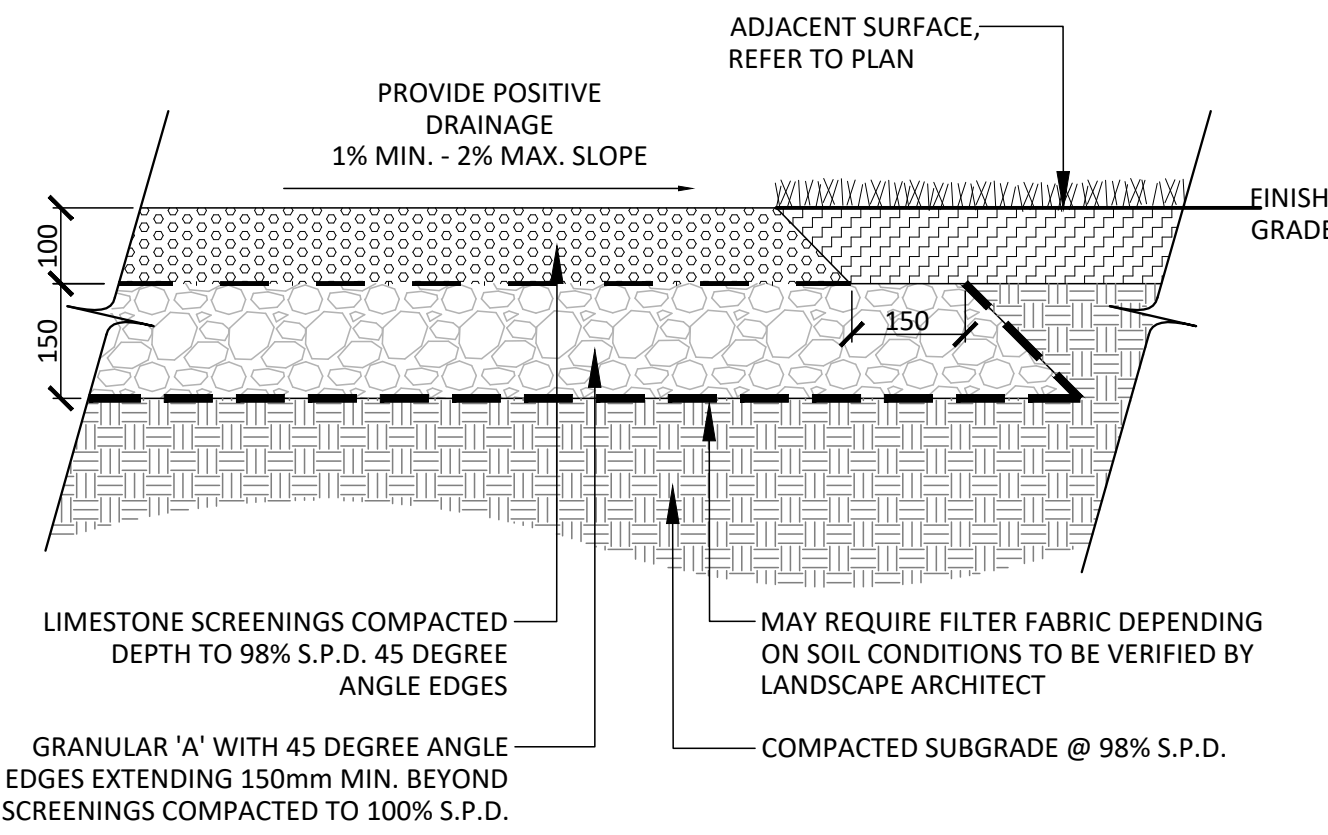
*NOTE: CANOPY CALCULATION DOES NOT ACCOUNT FOR EXISTING TREE CANOPY ON ADJACENT SITES/IN ROW OVERLAPPING SITE



- NOTES:
1. CROSS SLOPE PATH 1-2% IN DIRECTION OF NATURAL DRAINAGE TO PROVIDE POSITIVE DRAINAGE OF ALL WALKS.
 2. FILTER FABRIC SHALL BE APPROVED NON-WOVEN CLASS 1 GEOTEXTILE AS PER MS-22.15 WHEN WARRANTED BY SOIL CONDITION, SUBJECT TO APPROVAL BY THE LANDSCAPE ARCHITECT.
 3. ALL DISTURBED AREAS ALONG ASPHALT WALKWAYS SHALL BE SODDED OVER 150mm TOPSOIL FOR A MINIMUM DISTANCE OF 900mm
 4. GRANULAR 'A' SHALL MEET THE REQUIREMENTS OF OPSS 1010.

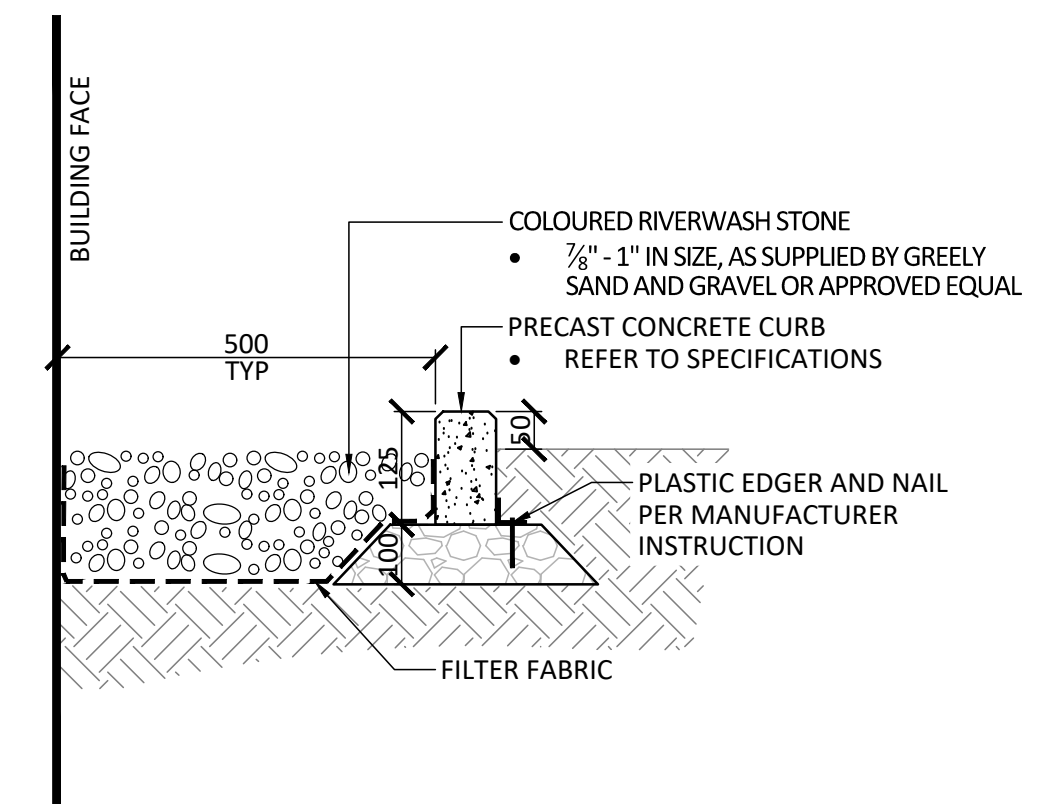


2 LIGHT DUTY UNIT PAVING
1:10

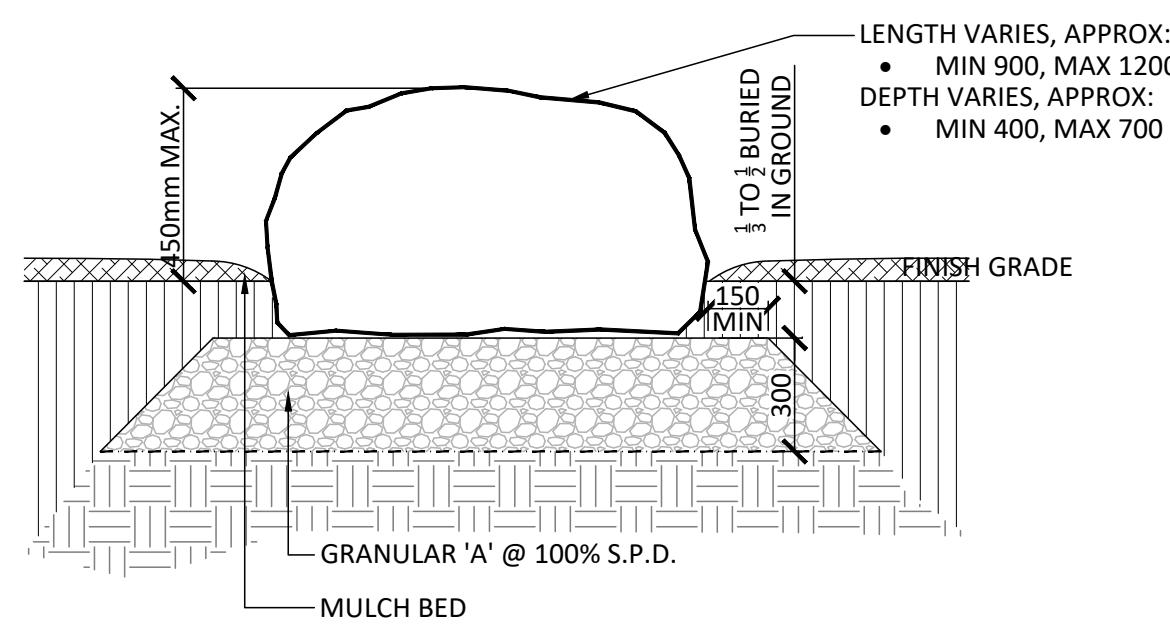


- NOTES:
1. FILTER FABRIC SHALL BE APPROVED NON-WOVEN CLASS 1 GEOTEXTILE AS PER MS-22.15 WHEN WARRANTED BY SOIL CONDITION, SUBJECT TO APPROVAL BY THE LANDSCAPE ARCHITECT.

3 STONEDUST PAVING
1:10

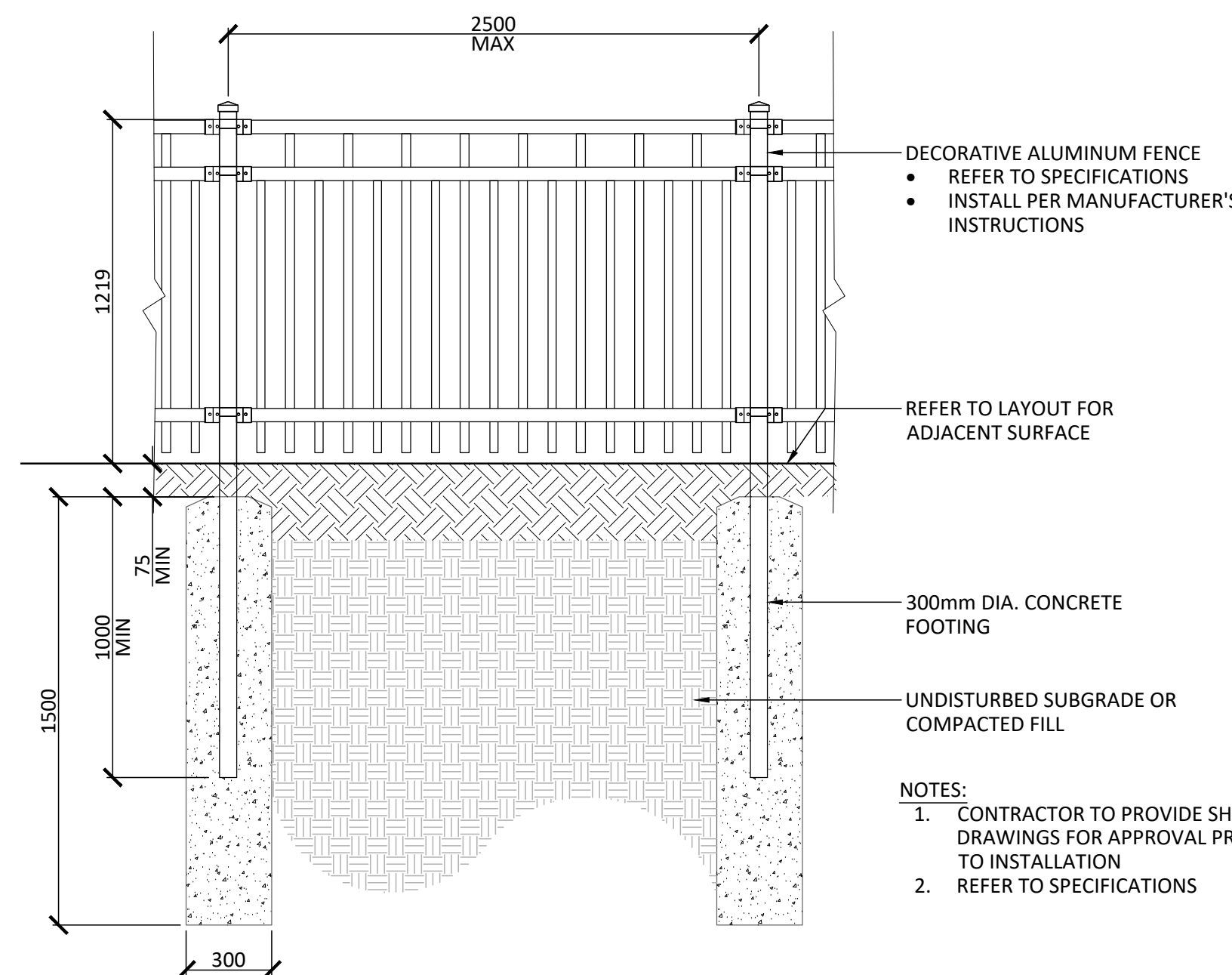


4 MAINTENANCE EDGE
1:10

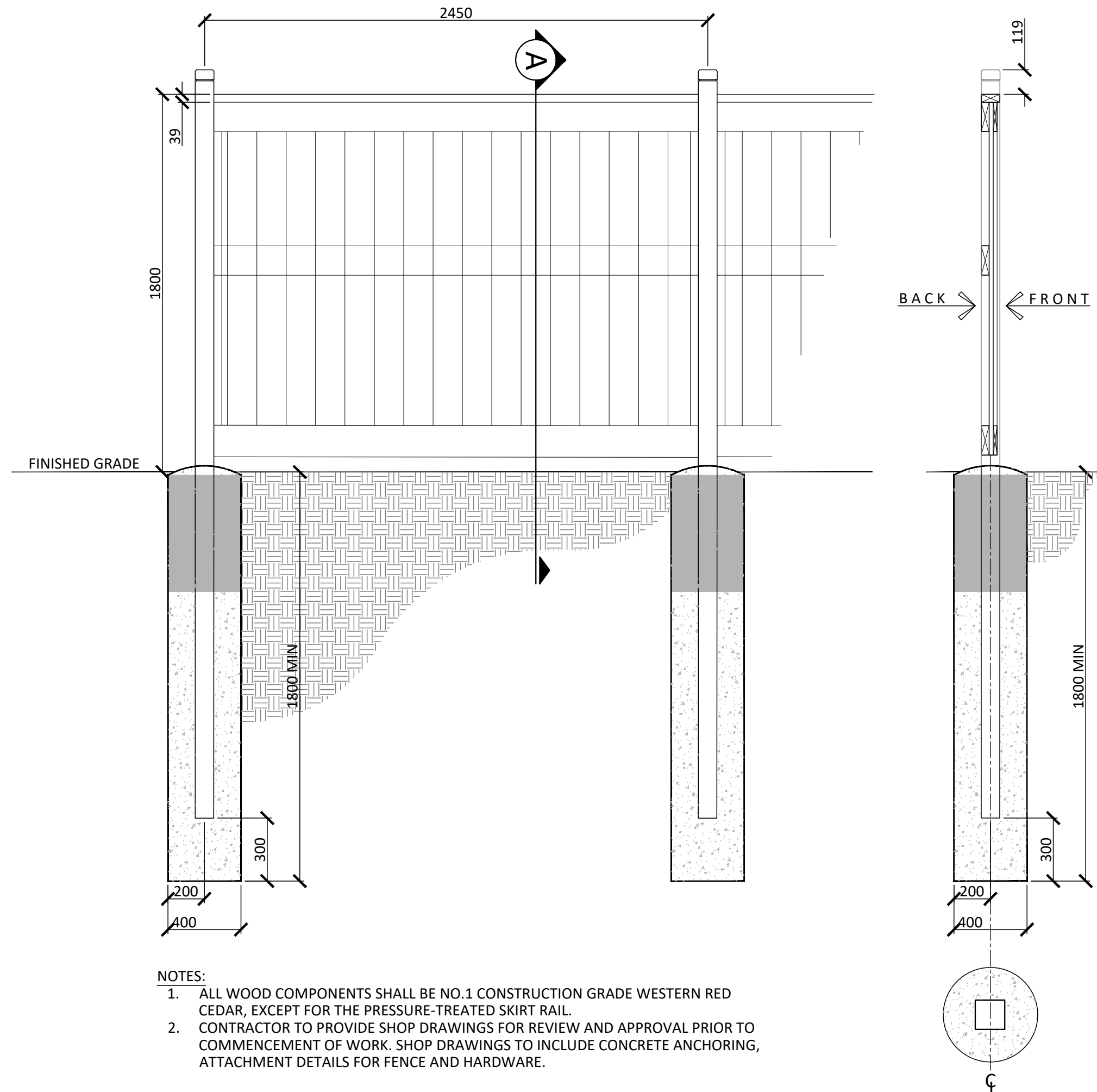


- NOTES:
1. NO SHARP EDGES, CRACKS OR SPALLING.
 2. NO FROST SUSCEPTIBLE BOULDER
 3. CONTRACTOR TO CONFIRM SOURCE/ QUARRY WITH LANDSCAPE ARCHITECT. GRANITE BOULDER FROM LOCAL SOURCE IS PREFERRED.
 4. PLACEMENT AND SIZING OF BOULDER TO BE DETERMINED ON SITE AND APPROVED BY LANDSCAPE ARCHITECT.

5 SEATING BOULDER
1:20



6 1.2m HT. DECORATIVE FENCE
1:20



- NOTES:
1. ALL WOOD COMPONENTS SHALL BE NO.1 CONSTRUCTION GRADE WESTERN RED CEDAR, EXCEPT FOR THE PRESSURE-TREATED SKIRT RAIL.
 2. CONTRACTOR TO PROVIDE SHOP DRAWINGS FOR REVIEW AND APPROVAL PRIOR TO COMMENCEMENT OF WORK. SHOP DRAWINGS TO INCLUDE CONCRETE ANCHORING, ATTACHMENT DETAILS FOR FENCE AND HARDWARE.

7 1.8m HT. WOOD PRIVACY FENCE
1:20

Contractor shall check all dimensions on the work and report any discrepancy to the Landscape Architect before proceeding. All drawings and specifications are the property of the Landscape Architect and must be returned at the completion of the work. This drawing is not to be used for construction until signed by the Landscape Architect.

Key Plan

No.	Description	Date
3	Issued for First Submission	Jun 11/25
2	Issued for Coordination	May 01/25
1	Issued for Coordination	Mar 26/25

Revision	
City Approval Stamp	OWNERSHIP BROCKBART 2280 ST. LAURENT BLVD. SUITE 201, OTTAWA ON
	ARCHITECT M. DAVID BLAKELY ARCHITECT INC. 2000 PRINCE OF WALES DR. SUITE 101, OTTAWA ON
	LANDSCAPE ARCHITECT NAK DESIGN STRATEGIES 1285 WELLINGTON ST., OTTAWA, ON
	CIVIL/SERVICING LIL ENGINEERING 5400 CANOVA RD., OTTAWA, ON

PROPERTY INFORMATION
REGISTERED PLAN NO. 1285 PART OF LOT 4 CONCESSION 3 (OTTAWA FRONT), GEOGRAPHIC TOWNSHIP OF GLOUCESTER CITY OF OTTAWA



NAK
design strategies

1285 WELLINGTON STREET, OTTAWA, ON K1Y 3A8 CANADA
T 613.237.2345 NAKDESIGNSTRATEGIES.COM
Project

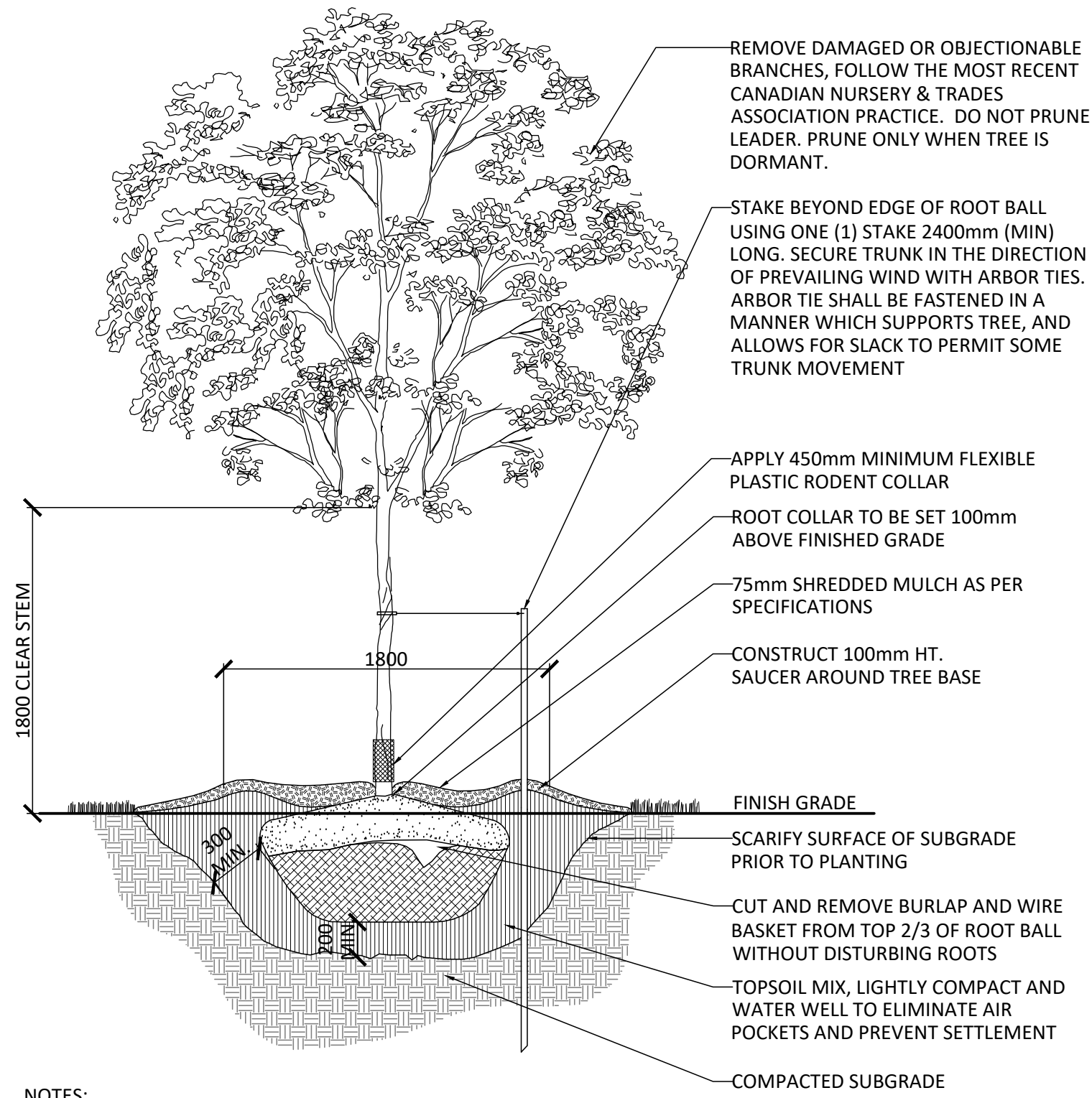
Trailsedge Block 121
6273 Renaud Rd, Ottawa ON

Title
LANDSCAPE DETAILS

Date	2025-01-28	Sheet
Scale	1:300	L2.0
Drawn	SW	
Checked	MK	
Job No.	24-400	

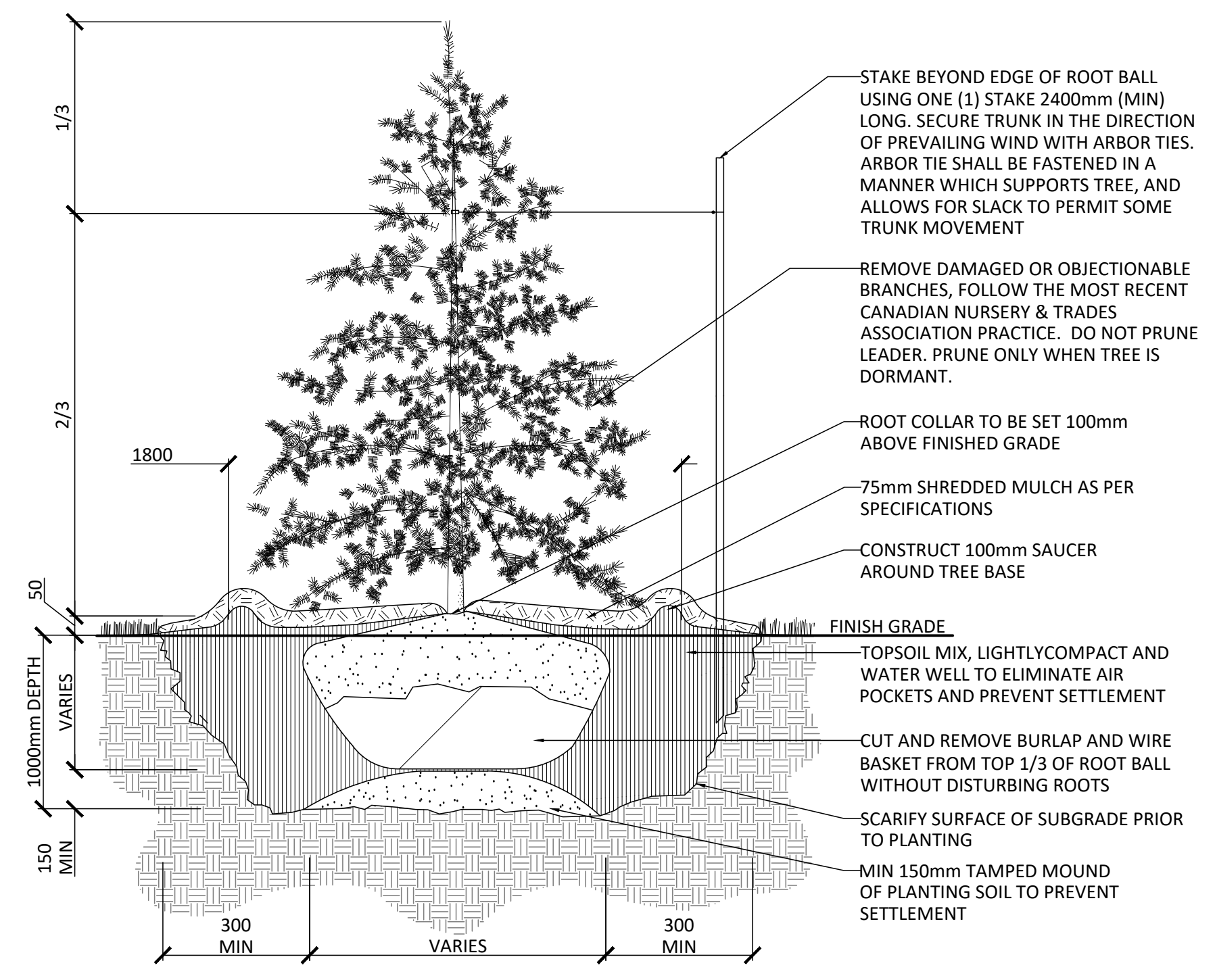
PLAN N° XXXXX

CITY FILE N° XXX-XX-XX-XXXX



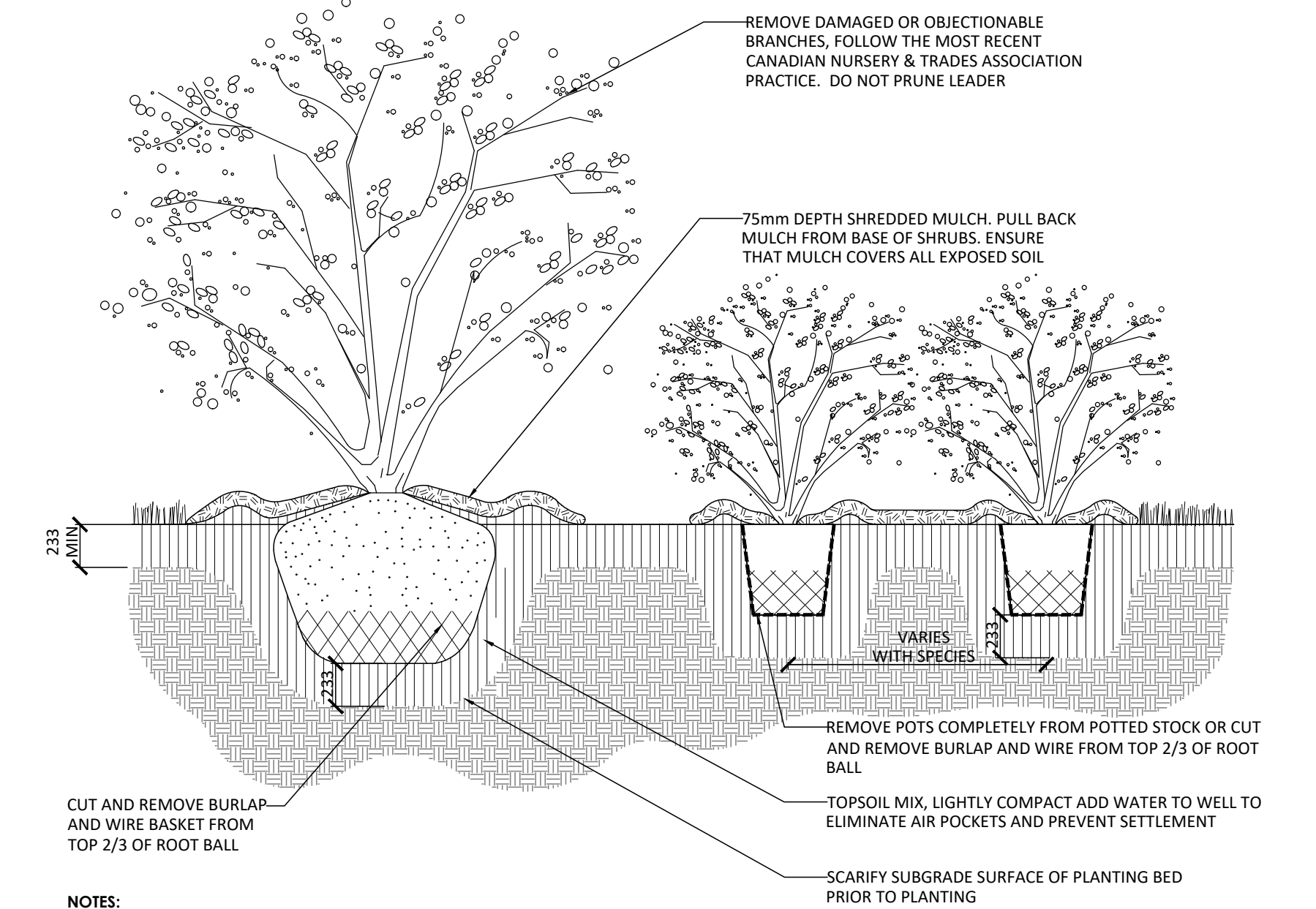
- NOTES:**
1. REMOVE STAKE AFTER ONE YEAR OR UNTIL TAKEOVER, UNLESS OTHERWISE DIRECTED BY THE LANDSCAPE ARCHITECT.
 2. TOPSOIL MIXTURE AND SHREDDED MULCH AS PER SPECIFICATION
 3. REMOVE TREE WRAP AFTER PLANTING
 4. CALIPER TO BE MEASURED AT THE BASE OF TREE AT ROOT BALL.

1 DECIDUOUS TREE PLANTING (ONE STAKE W/ARBOR TIES)
1:30



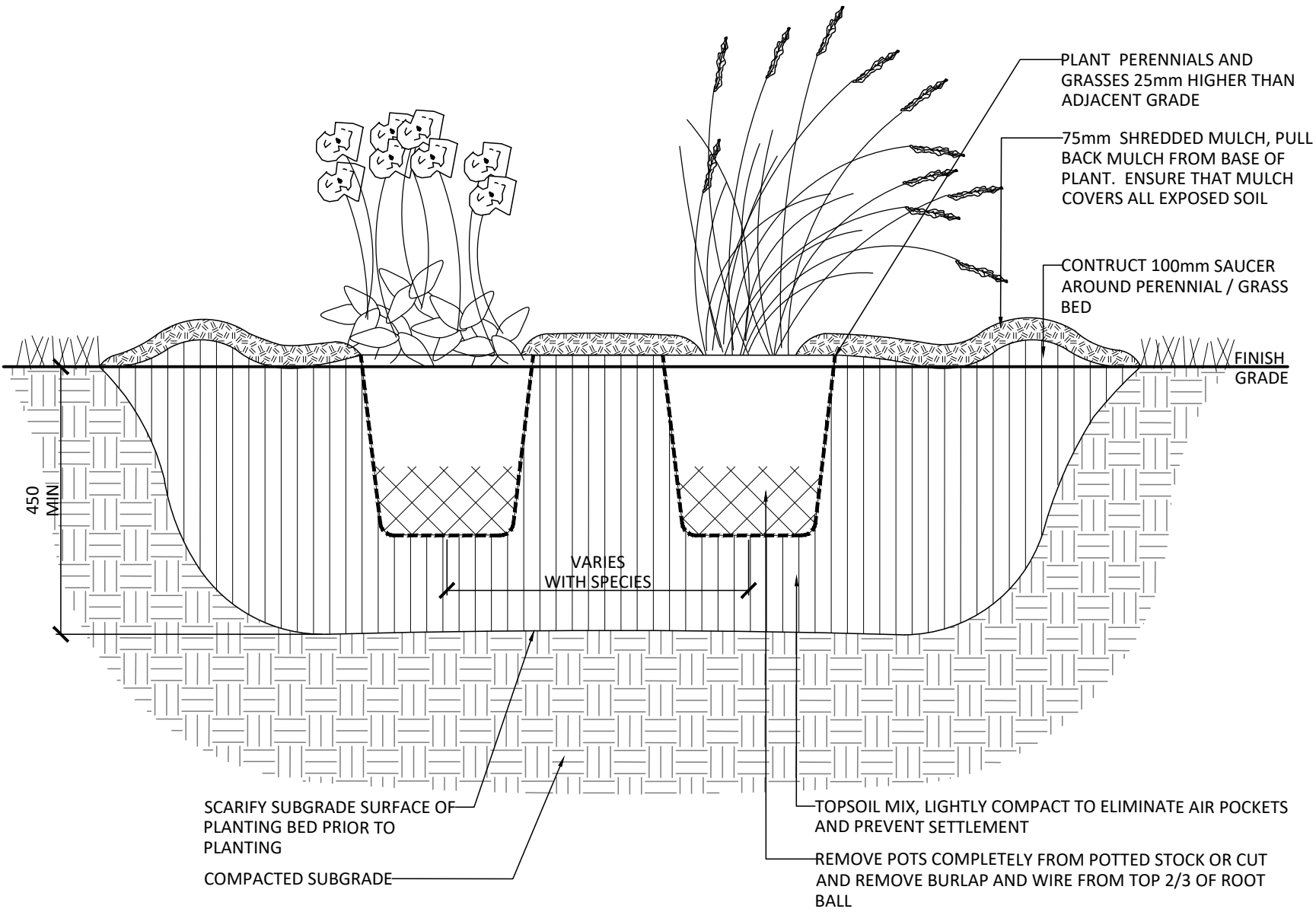
- NOTES:**
1. REMOVE STAKE AFTER ONE YEAR OR UNTIL TAKEOVER UNLESS OTHERWISE DIRECTED BY THE LANDSCAPE ARCHITECT.
 2. TOPSOIL MIXTURE AND SHREDDED MULCH AS PER SPECIFICATION

2 CONIFEROUS TREE PLANTING (ONE STAKE W/ARBOR TIES)
1:30



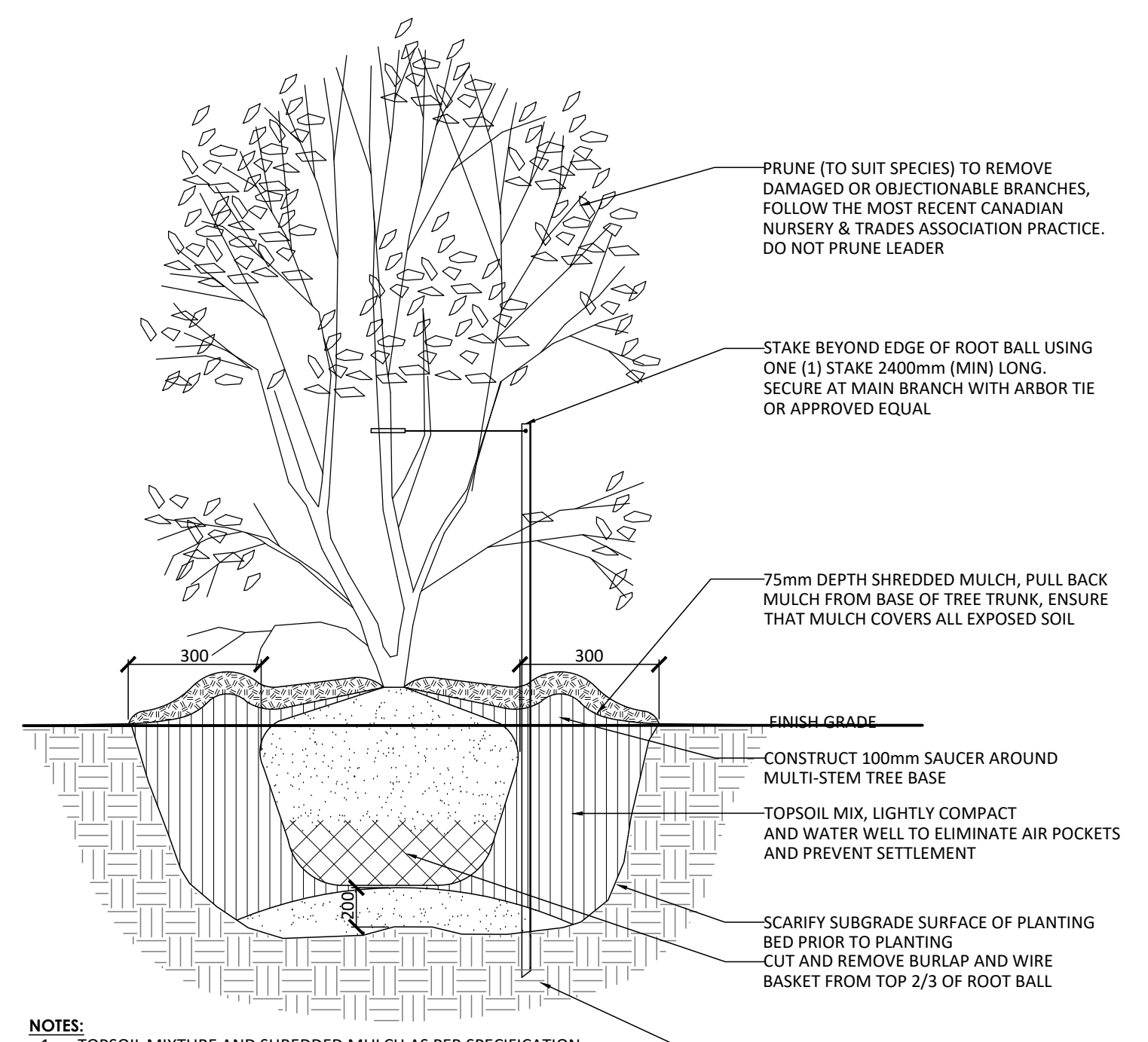
- NOTES:**
1. TOPSOIL MIXTURE AND SHREDDED MULCH AS PER SPECIFICATION.
 2. SHRUBS SPECIFIED TO BE PLANTED SO THAT ROOTS ARE FULLY EXTENDED IN PLANTING HOLE WITH SOIL MIX BACKFILLED CAREFULLY TO PREVENT ROOT DAMAGE.
 3. PROVIDE 100mm HIGH EARTH SAUCER AROUND SHRUB BED.

3 SHRUB BED PLANTING
1:30



- NOTES:**
1. TOPSOIL MIXTURE AND SHREDDED MULCH AS PER SPECIFICATION.
 2. PROVIDE 100mm HIGH EARTH SAUCER AROUND PERENNIAL/GRASS BED.

4 PERENNIAL AND ORNAMENTAL GRASS PLANTING
1:30



- NOTES:**
1. TOPSOIL MIXTURE AND SHREDDED MULCH AS PER SPECIFICATION.
 2. PROVIDE 100mm HIGH EARTH SAUCER AROUND SHRUB BED.
 3. STAKES TO BE REMOVED AFTER ONE YEAR OR UNTIL TAKEOVER UNLESS OTHERWISE DIRECTED BY LANDSCAPE ARCHITECT.

5 TREE FORM SHRUB PLANTING
1:30

CRZ = DBH X 10CM. CRZ IS TO BE MEASURED FROM THE OUTSIDE EDGE OF THE TREE BASE

1.2M MIN. HIGH TREE PROTECTION FENCING AS PER REQUIREMENT #3

POSTS TO BE SPACED AT 2.4M O/C MAX AS PER REQUIREMENT #3

TREE PROTECTION REQUIREMENTS:

1. PRIOR TO ANY WORK ACTIVITY WITHIN THE CRITICAL ROOT ZONE (CRZ = 10 X DIAMETER) OF A TREE, TREE PROTECTION FENCING MUST BE INSTALLED SURROUNDING THE CRITICAL ROOT ZONE, AND REMAIN IN PLACE UNTIL THE WORK IS COMPLETE.
2. UNLESS PLANS ARE APPROVED BY CITY FORESTRY STAFF, FOR WORK WITHIN THE CRZ:
 - DO NOT PLACE ANY MATERIAL OR EQUIPMENT - INCLUDING OUTHOUSES;
 - DO NOT ATTACH ANY SIGNS, NOTICES OR POSTERS TO ANY TREE;
 - DO NOT RAISE OR LOWER THE EXISTING GRADE;
 - TUNNEL OR BORE WHEN DIGGING;
 - DO NOT DAMAGE THE ROOT SYSTEM, TRUNK, OR BRANCHES OR ANY TREE;
 - ENSURE THAT EXHAUST FUMES FROM ALL EQUIPMENT ARE NOT DIRECTED TOWARD ANY TREE CANOPY;
 - DO NOT EXTEND HARD SURFACE OR SIGNIFICANTLY CHANGE LANDSCAPING
3. TREE PROTECTION FENCING MUST BE AT LEAST 1.2M IN HEIGHT, AND CONSTRUCTED OF RIGID OR FRAMED MATERIALS (E.G. MODULOC - STEEL, PLYWOOD HOARDING, OR SNOW FENCE ON A 2"x4" WOOD FRAME) WITH POSTS 2.4M APART, SUCH THAT THE FENCE LOCATION CANNOT BE ALTERED. ALL SUPPORTS AND BRACING MUST BE PLACED OUTSIDE OF THE CRZ, AND INSTALLATION MUST MINIMISE DAMAGE TO EXISTING ROOTS. (SEE DETAILS)
4. THE LOCATION OF THE TREE PROTECTION FENCING MUST BE DETERMINED BY AN ARBORIST AND DETAILED ON ANY ASSOCIATED PLANS FOR THE SITE (E.G. TREE CONSERVATION REPORT, TREE INFORMATION REPORT, ETC).
5. IF THE FENCED TREE PROTECTION AREA MUST BE REDUCED TO FACILITATE CONSTRUCTION, MITIGATION MEASURES MUST BE PRESCRIBED BY AN ARBORIST. THESE MAY INCLUDE:
 - THE PLACEMENT OF PLYWOOD, WOOD CHIPS, OR STEEL PLATING OVER THE ROOTS FOR PROTECTION OR THE PROPER PRUNING AND CARE OF ROOTS WHERE ENCOUNTERED.

THE CITY'S TREE PROTECTION BY-LAW, 2020-340 PROTECTS BOTH CITY-OWNED TREES, CITY-WIDE, AND PRIVATELY-OWNED TREES WITHIN THE URBAN AREA. PLEASE REFER TO WWW.OTTAWA.CA/TREEBYLAW FOR MORE INFORMATION ON HOW THE TREE BY-LAW APPLIES.

ACCESSIBLE FORMATS AND COMMUNICATION SUPPORTS ARE AVAILABLE, UPON REQUEST

TREE PROTECTION SPECIFICATION

TO BE IMPLEMENTED FOR RETAINED TREES, BOTH ON SITE AND ON ADJACENT SITES, PRIOR TO ANY TREE REMOVAL OR SITE WORKS AND MAINTAINED FOR THE DURATION OF WORK ACTIVITIES ON SITE.

SCALE: NTS

DATE: MARCH 2021

DRAWING NO.: 1 of 1

6 TREE PROTECTION FENCING
NTS

Contractor shall check all dimensions on the work and report any discrepancy to the Landscape Architect before proceeding. All drawings and specifications are the property of the Landscape Architect and must be returned at the completion of the work. This drawing is not to be used for construction until signed by the Landscape Architect.

Key Plan

No.	Description	Date
3	Issued for First Submission	Jun 11/25
2	Issued for Coordination	May 01/25
1	Issued for Coordination	Mar 26/25

Revision	

City Approval Stamp

OWNERSHIP
PROSPECT
2280 ST. LAURENT BLVD. SUITE 201,
OTTAWA ON

ARCHITECT
M. DAVID BLAKELEY ARCHITECT INC.
2002 PRINCE OF WALES DR. SUITE 101,
OTTAWA ON

LANDSCAPE ARCHITECT
NAK DESIGN STRATEGIES
1285 WELLINGTON ST., OTTAWA, ON

CIVIL/SERVICING
L&L ENGINEERING
5400 Carleton Pl., Ottawa, ON

PROPERTY INFORMATION
REGISTERED PLAN 4M 1285 PART OF LOT 4 CONCESSION 3 (OTTAWA FRONT), GEOGRAPHIC TOWNSHIP OF GLOUCESTER CITY OF OTTAWA

NAK
design strategies

1285 WELLINGTON STREET, OTTAWA, ON K1Y 3A8 CANADA
T 613.237.2345 NAKDESIGNSTRATEGIES.COM

Trailsedge Block 121
6273 Renaud Rd, Ottawa ON

Title	
LANDSCAPE DETAILS	
Date: 2025-01-28	Sheet: L2.1
Scale: 1:300	
Drawn: SW	
Checked: MK	
Job No.: 24-400	

CITY FILE N° XXX-XX-XX-XXXX

PLAN N° XXXXX