

Surveyor's Certificate

I CERTIFY THAT:
1. The survey and plan are correct and in accordance with the Survey Act and the Surveyors Act and the regulations made under them.
2. The survey was completed on the 8th day of April, 2024.

April 8, 2024

Date

Andrew J. Brotham

Ontario Land Surveyor

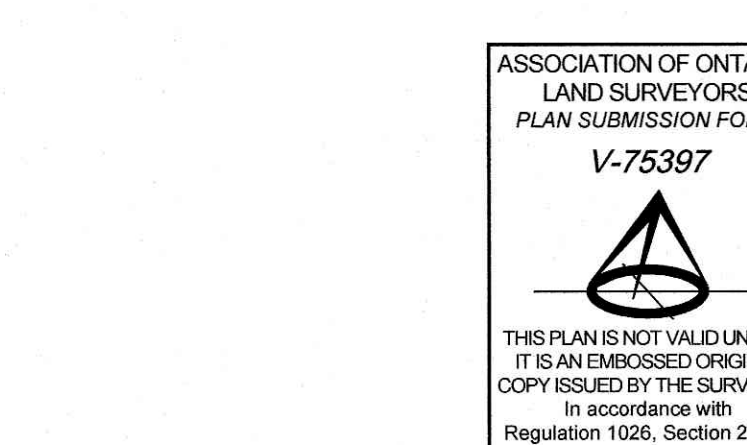
Notes & Legend

Symbol	Description
—○—	Survey Monument Planted
—●—	Survey Monument Found
—S—	Standard Iron Bar
—SB—	Short Standard Iron Bar
—B—	Iron Bar
—B*—	Iron Bar (0.3 Long)
—CP—	Concrete Pin
—NB—	Nail & Washer
—(WIT)—	Witness
—Meas.—	Measured
—Acc.—	Accepted
—Dist.—	Disturbed
—(ADD)—	Annis, O'Sullivan, Vollebek Ltd.
—P1—	Plan 48-11425
—P2—	Plan 48-28007
—P3—	Plan 48-942
—P4—	Plan 48-25195
—P5—	(ACQ) Plan dated February 14, 2012
—P6—	(ACQ) Plan dated March 23, 2004
—P7—	Plan 48-35009
—P8—	(ACQ) Plan dated September 2, 2014
—P9—	Plan 58-11347
—P10—	Plan 48-8888
—P11—	Plan 58-10080
—N1—	Field Notes (1152) dated September 11, 1973 (Reference No. 4-30-NP)
—N2—	Field Notes (ACQ) dated February 2, 2021 (Reference No. 20794-20)
—	Deciduous Tree
—	Coniferous Tree
—	Fire Hydrant
—	Water Valve
—	Maintenance Hole (Storm Sewer)
—	Maintenance Hole (Sanitary)
—	Maintenance Hole (Bell Telephone)
—	Maintenance Hole (Traffic)
—	Maintenance Hole (Unidentified)
—	Valve Chamber (Watermain)
—	Overhead Wires
—	Catch Basin
—	Catch Basin Inlet
—	Ditch Inlet
—	Top of Grate
—	Invert
—	Corrugated Plastic Pipe
—	Monitoring Well
—	Gas Meter
—	Traffic Terminal Box
—	Handhole
—	Bollard
—	Sign
—	Chain Link Fence
—	Board Fence
—	Plastic Fence
—	Guard Rail
—	Timber Retaining Wall
—	Concrete Retaining Wall
—	Jersey Barrier
—	Concrete Sidewalk
—	Gate
—	Wood Pole
—	Mail Pole
—	Traffic Signal Post
—	Utility Pole
—	Anchor
—	Light Standard
—	Air Conditioner
—	Hydro Transformer Pad
—	Location of Elevations
—	Top of Concrete Curb Elevation
—	Diameter
—	Centreline
—	Property Line

SITE AREA = 6.300ha

Buildings are gird derived from the southerly limit of Part 1, Plan 48-28007, shown to be N60°28'50"W thereon, and are referred to the Central Meridian of MTM Zone 18 (76°30' West Longitude) NAD 83 (original).

For bearing comparisons, a rotation of 1°22'07" counter-clockwise was applied to bearings on plans (P3) and (P12).



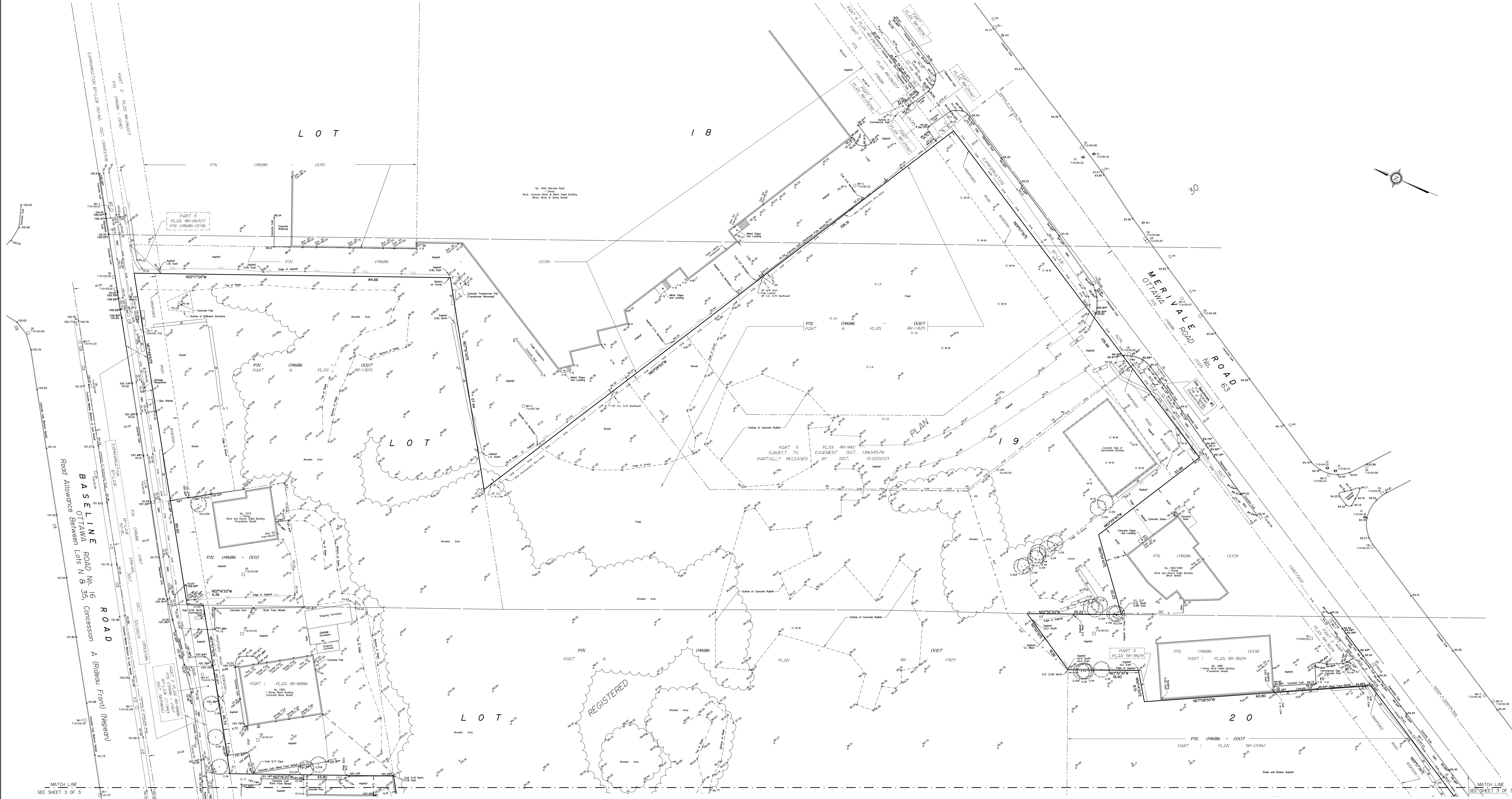
ELEVATION NOTES

1. Elevations shown are derived from City of Ottawa Monument No. N-43 (Index No. 66), having an elevation of 95.138 metres CGVD28 geoid datum.
2. It is the responsibility of the user of this information to verify that the job benchmark has not been altered or disturbed and that its relative elevation and description agrees with the information shown on this drawing.

UTILITY NOTES

1. This drawing cannot be accepted as acknowledging all of the utilities and it will be the responsibility of the user to contact the respective utility authorities for confirmation.
2. Only visible surface utilities were located.
3. A field location of underground plant by the pertinent utility authority is mandatory before any work involving breaking ground, probing, excavating etc.

Topographic data was collected under Winter Conditions. Snow cover and ice preclude determining location and elevation of some topographical data that is otherwise visible.



- Notes & Legend
- | | |
|---------|---|
| —○— | Survey Monument Planted |
| —●— | Survey Monument Found |
| —■— | Standard Iron Bar |
| —SSB— | Short Standard Iron Bar |
| —IS— | Iron Bar |
| —IP— | Iron Bar (0.3 Long) |
| —CP— | Concrete Pin |
| —NW— | Nail & Washer |
| —(WT)— | Witness |
| —Mec— | Measured |
| —Acc— | Accepted |
| —Dis— | Disputed |
| —(AOG)— | Annis, O'Sullivan, Vollebakk Ltd. |
| —(P1)— | Plan 4R-11425 |
| —(P2)— | Plan 4R-20007 |
| —(P3)— | Plan 4R-842 |
| —(P4)— | Plan 4R-20160 |
| —(P5)— | (AOG) Plan dated February 14, 2012 |
| —(P6)— | (AOG) Plan dated March 23, 2004 |
| —(P7)— | Plan 4R-30009 |
| —(P8)— | (AOG) Plan dated September 2, 2014 |
| —(P9)— | Plan 5R-11347 |
| —(P10)— | Plan 4R-8888 |
| —(P11)— | Plan 5R-14005 |
| —(P12)— | Field Notes (1152) dated September 11, 1973 (Reference No. 4-30-NP) |
| —(P13)— | Field Notes (AOG) dated February 2, 2021 (Reference No. 20794-2) |
| —(P14)— | Deciduous Tree |
| —(P15)— | Coniferous Tree |
| —(P16)— | Fire Hydrant |
| —(P17)— | Water Valve |
| —(P18)— | Maintenance Hole (Storm Sewer) |
| —(P19)— | Maintenance Hole (Sanitary) |
| —(P20)— | Maintenance Hole (Bell Telephone) |
| —(P21)— | Maintenance Hole (Traffic) |
| —(P22)— | Maintenance Hole (Unidentified) |
| —(P23)— | Valve Chamber (Watermain) |
| —(P24)— | Overhead Wires |
| —(P25)— | Catch Basin |
| —(P26)— | Catch Basin Inlet |
| —(P27)— | Drain Inlet |
| —(P28)— | Top of Grate |
| —(P29)— | Inlet |
| —(P30)— | Corrugated Plastic Pipe |
| —(P31)— | Monitoring Well |
| —(P32)— | Gas Meter |
| —(P33)— | Traffic Terminal Box |
| —(P34)— | Handhole |
| —(P35)— | Ballast |
| —(P36)— | Sign |
| —(P37)— | Chain Link Fence |
| —(P38)— | Board Fence |
| —(P39)— | Plastic Fence |
| —(P40)— | Guard Rail |
| —(P41)— | Timber Retaining Wall |
| —(P42)— | Concrete Retaining Wall |
| —(P43)— | Jersey Barrier |
| —(P44)— | Concrete Sidewalk |
| —(P45)— | Gate |
| —(P46)— | Wood Pole |
| —(P47)— | Mail Pole |
| —(P48)— | Traffic Signal Post |
| —(P49)— | Utility Pole |
| —(P50)— | Anchor |
| —(P51)— | Light Standard |
| —(P52)— | Air Conditioner |
| —(P53)— | Hydro Transformer Pad |
| —(P54)— | Location of Elevations |
| —(P55)— | Top of Concrete Curb Elevation |
| —(P56)— | Diameter |
| —(P57)— | Centimetre |
| —(P58)— | Property Line |

Notes

Bearings are grid, derived from the southerly limit of Part 1, Plan 4R-25160, shown to be N60°25'00"W thence, and are referred to the Central Meridian of MTM Zone 9 (78°30' West Longitude) (NAD 83 (original)).

ELEVATION NOTES

1. Elevations shown are derived from City of Ottawa Monument No. N-63 (Index No. 85), having an elevation of 85.131 metres CGVD08 geosoid datum.

2. It is the responsibility of the user of this information to verify that the job benchmark has not been altered or disturbed and that its relative elevation and description agrees with the information shown on this drawing.

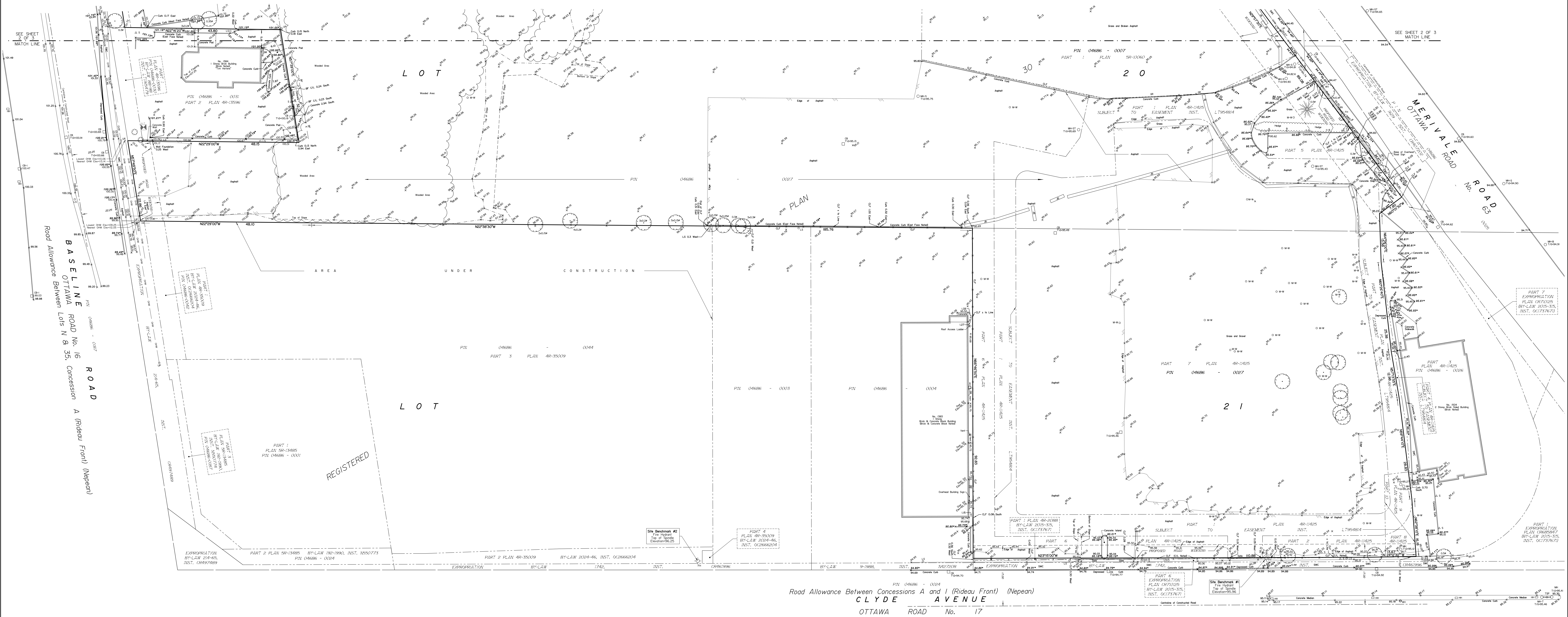
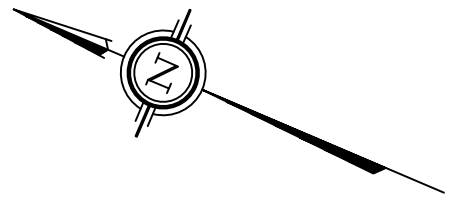
UTILITY NOTES

1. This drawing cannot be accepted as acknowledging all of the utilities and it will be the responsibility of the user to contact the respective utility authorities for confirmation.

2. Only visible surface utilities were located.

3. Field location of underground plant by the pertinent utility authority is mandatory before any work involving breaking ground, probing, excavating etc.

Topographic data was collected under Winter Conditions. Show cover and are provided determining location and elevation of some topographical data that is otherwise visible.



Road Allowance Between Concessions A and I (Rideau Front) (Nepean)
CLYDE AVENUE
OTTAWA ROAD No. 17

Legend

<ul style="list-style-type: none"> Survey Monument Planned Survey Monument Found Standard Iron Bar Short Standard Iron Bar Iron Bar (0.3 Long) Concrete Pin Nail & Washer Wholes Measured Accepted Disputed Arms Of Culture, Vollebekk Ltd. Plan 4R-11425 Plan 4R-20007 Plan 4R-1842 Plan 4R-2510 (AOG) Plan dated February 14, 2012 (AOG) Plan dated March 23, 2004 Plan 4R-35009 (AOG) Plan dated September 2, 2014 Plan 5R-11347 Plan 4R-8886 Plan 5R-10060 Field Notes (1152) dated September 11, 1973 (Reference No. 4-20-47) Field Notes (AOG) dated February 2, 2021 (Reference No. 20794-20) 	<ul style="list-style-type: none"> Deciduous Tree Coniferous Tree Fire Hydrant Water Valve Gas Maintenance Hole (Storm Sewer) Maintenance Hole (Sanitary) Maintenance Hole (Bell Telephone) Maintenance Hole (Traffic) Maintenance Hole (Unidentified) Valve Chamber (Watermain) Air Conditioner Catch Basin Catch Basin Inlet Clash Inlet Top of Grate Invert Comrigated Plastic Pipe Monitoring Well Gas Meter Traffic Terminal Box Handhole Ballast Sign Chain Link Fence Board Fence Plastic Fence 	<ul style="list-style-type: none"> Guard Rail Timber Retaining Wall Concrete Retaining Wall Jersey Barrier Concrete Sidewalk Gate Wood Pole Metal Pole Traffic Signal Post Utility Pole Anchor Light Standard Hydro Transformer Pad Location of Elevations Top of Concrete Curb Elevation Diameter Centreline Property Line
---	---	---

Notes

Bearings are gnd. derived from the southerly limit of Part 1, Plan 4R-2510, shown to be 160°28'00" W. (bearing, and are referred to the Central Meridian of MTM Zone 18 (70°30' West Longitude) 114D-83 (original).

ELEVATION NOTES

- Elevations shown are derived from City of Ottawa Monument No. 4-03 (Index No. 65), having an elevation of 95.138 metres CGVD2013 geoid datum.
- It is the responsibility of the user of this information to verify that the job benchmark has not been altered or disturbed and that its relative elevation and description agrees with the information shown on this drawing.

UTILITY NOTES

- This drawing cannot be accepted as acknowledging all of the utilities and it will be the responsibility of the user to contact the respective utility authorities for confirmation.
- Only visible surface utilities were located.
- A field location of underground pipes by the pertinent utility authority is mandatory before any work involving breaking ground, probing, excavating etc.