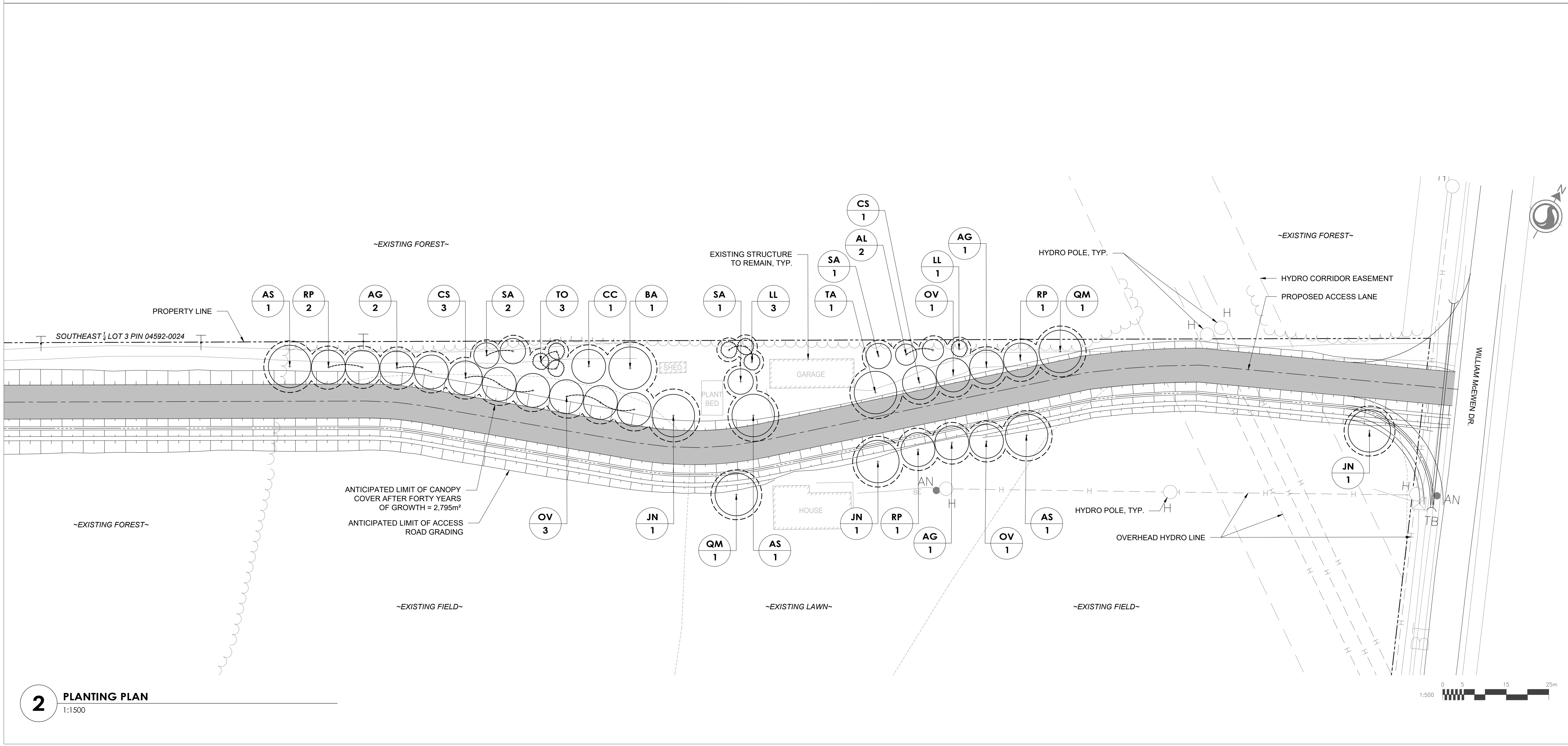


1 SITE OVERVIEW
1:1500



2 PLANTING PLAN
1:500

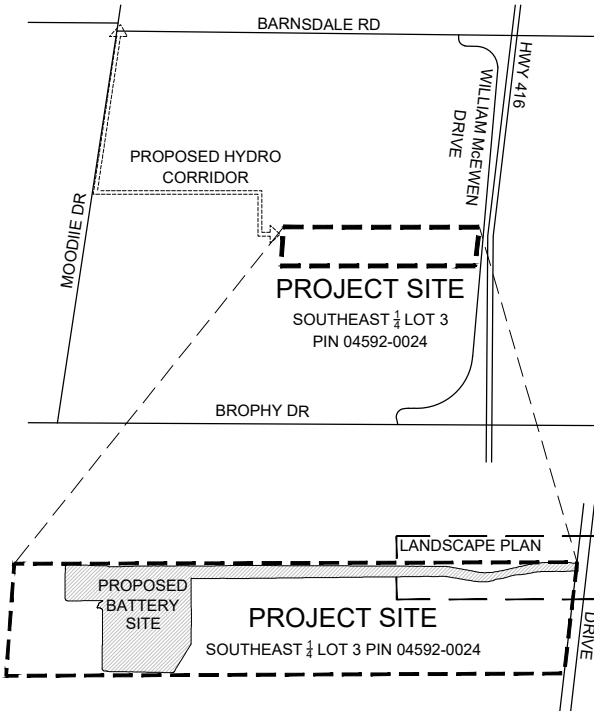


Stantec Consulting Ltd.
400 - 1331 Clyde Avenue
Ottawa ON
Tel. 613.722.4420
www.stantec.com

Copyright Reserved

The Contractor shall verify and be responsible for all dimensions. DO NOT scale the drawing - any errors or omissions shall be reported to Stantec without delay.
The Copyrights to all designs and drawings are the property of Stantec. Reproduction or use for any purpose other than that authorized by Stantec is forbidden.

Key Plan



Legend

- PROPOSED DECIDUOUS TREE
- PROPOSED CONIFEROUS TREE
- EDGE OF EXISTING FORESTED AREA
- ANTICIPATED LIMIT OF CANOPY COVER AFTER FORTY YEARS
- PROPERTY LINE

Notes

- REFER TO TREE CONSERVATION REPORT BY HATCH AND DATED MARCH 19, 2025 FOR DETAILS ON TREE REMOVALS, POTENTIAL IMPACTS TO TREES, AND VEGETATION AREAS TO BE RETAINED / PROTECTED.
 - PROPOSED TREE PLANTING SHOWN REPRESENTS COMPENSATION PLANTING FOR TREE REMOVALS WITHIN THE PROPOSED RIGHT OF WAY HYDRO TRANSMISSION CORRIDOR AND 4186 WILLIAM MCEWEN.
 - EIGHTEEN ANTICIPATED TREE REMOVALS ARE PROPOSED TO BE COMPENSATED AT A 2:1 RATIO. FIVE ADDITIONAL TREES POTENTIALLY IMPACTED BY CONSTRUCTION ARE PROPOSED TO BE COMPENSATED AT A 1:1 RATIO. REFER TO PLANTING SCHEDULE.

1	ISSUED FOR SITE PLAN REVIEW	TA/BL	ILL	25.05.13
Revision		By	Appd.	YY.MM.DD

File Name:	XR-160402099-L-Planting.dwg	BL	ILL	BL	25.05.07
		Dwn.	Chkd.	Dsgn.	YY.MM.DD

Permit-Seal

Client/Project
EVOLUGEN

Title

LANDSCAPE PLAN

TRAIL ROAD BESS
4186 WILLIAM MCEWEN DR, OTTAWA

Project No.
160402099

Scale
AS NOTED

Drawing No.
Sheet

Revision

L1 1 of 2 1

DECIDUOUS TREES - REFER TO DETAIL 1/L2

CONIFEROUS TREES - REFER TO DETAIL 2/L2

LL	4	<i>Larix laricina</i>
----	---	-----------------------



1. REFER TO ENGINEERING DRAWINGS FOR PROPOSED GRADING, SITE SERVICING, AND FENCING LOCATION.
2. REFER TO THE GEOTECHNICAL INVESTIGATION REPORT PREPARED BY HATCH AND DATED APRIL 2, 2025, FOR DETAILS ON SOILS. BOREHOLES INVESTIGATIONS HAVE BEEN COMPLETED IN THE FORESTED AREA OF THE PROPERTY ONLY. THERE ARE NO STRIPES AND BUILDINGS IN PROXIMITY OF NEW TREES AND AS SUCH THE 2017 TREE PLANTING IN SENSITIVE MARINE CLAY GUIDELINES ARE NOT APPLICABLE.
3. EXISTING VEGETATED AREAS ON ADJACENT PROPERTIES SHALL REMAIN AND BE PROTECTED BEFORE, DURING, AND AFTER CONSTRUCTION.
4. CONTRACTOR TO LOCATE AND STAKE ALL UTILITIES PRIOR TO ANY WORK ON THE SITE AND TO OBTAIN CLEARANCE FROM ALL APPLICABLE UTILITIES. DO NOT PLANT DIRECTLY ABOVE UNDERGROUND UTILITIES. REPORT CONFLICTS AND ANY DISCREPANCIES TO THE LANDSCAPE ARCHITECT FOR DIRECTION.
5. NO TREES SHALL BE PLANTED ON PROPERTY / LOT LINES OR WITHIN DRAINAGE EASEMENTS.
6. NO TREES SHALL BE PLANTED UNDER OVERHEAD WIRES.
7. MAINTAIN A MINIMUM DISTANCE OF 1500mm BETWEEN TREE PLANTING AND ALL UNDERGROUND UTILITIES OR USE ROOT BARRIERS WHERE ROOT BALL OF TREE IS WITHIN 1000mm OF UNDERGROUND UTILITIES.
8. MAINTAIN A MINIMUM DISTANCE OF 4500mm BETWEEN TREE PLANTING AND ALL BUILDINGS.
9. MAINTAIN A MINIMUM DISTANCE OF 4000mm BETWEEN TREE PLANTING AND ALL HYDRO TRANSFORMERS.
10. MAINTAIN A MINIMUM DISTANCE OF 2000mm FROM THE ROAD CURB FOR DECIDUOUS TREES AND 5000mm FOR CONIFEROUS TREES.
11. MAINTAIN A MINIMUM DISTANCE OF 2000mm BETWEEN TREE PLANTING AND FIRE HYDRANTS.
12. MAINTAIN A MINIMUM DISTANCE OF 2500mm BETWEEN TREE PLANTING AND STREET LIGHTS.
13. MAINTAIN A MINIMUM OF 2000mm BETWEEN DECIDUOUS TREE PLANTING AND SIDEWALKS, PATHWAYS, AND DRIVEWAYS.
14. MAINTAIN A MINIMUM OF 4500mm BETWEEN CONIFEROUS TREE PLANTING AND SIDEWALKS, PATHWAYS, AND DRIVEWAYS.
15. MINIMUM DISTANCE BETWEEN DECIDUOUS TREES SHOULD BE AS FOLLOWS:



Notes

File Name: XR-160402099-L-Planting.dwg	BL	ILL	BL	25.05.07
	Dwn.	Chkd.	Dsgn.	YY.MM.DD

Permit-Seal

Client/Project

EVOLUGEN

TRAIL ROAD BESS
4186 WILLIAM MCEWEN DR, OTTAWA

Title
LANDSCAPE DETAILS & NOTES

Project No.	Scale
160402099	AS NOTED

Drawing No.	Sheet	Revision
-------------	-------	----------

L2

2 of 2

1