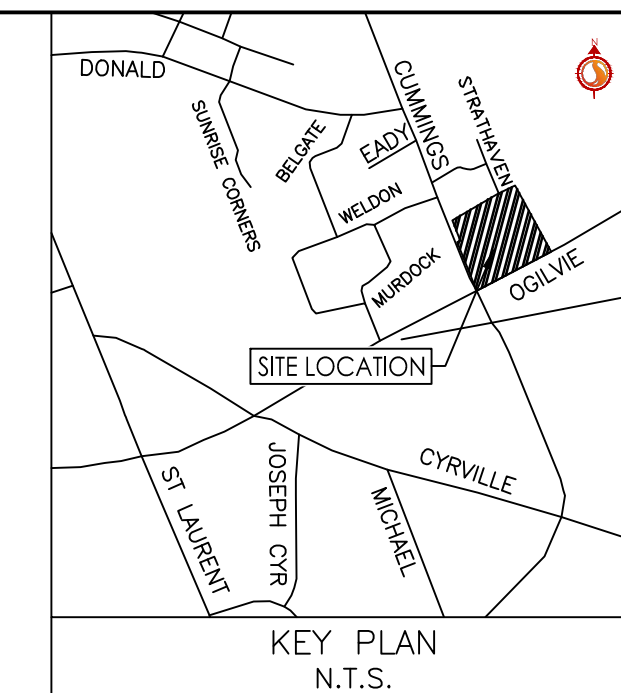




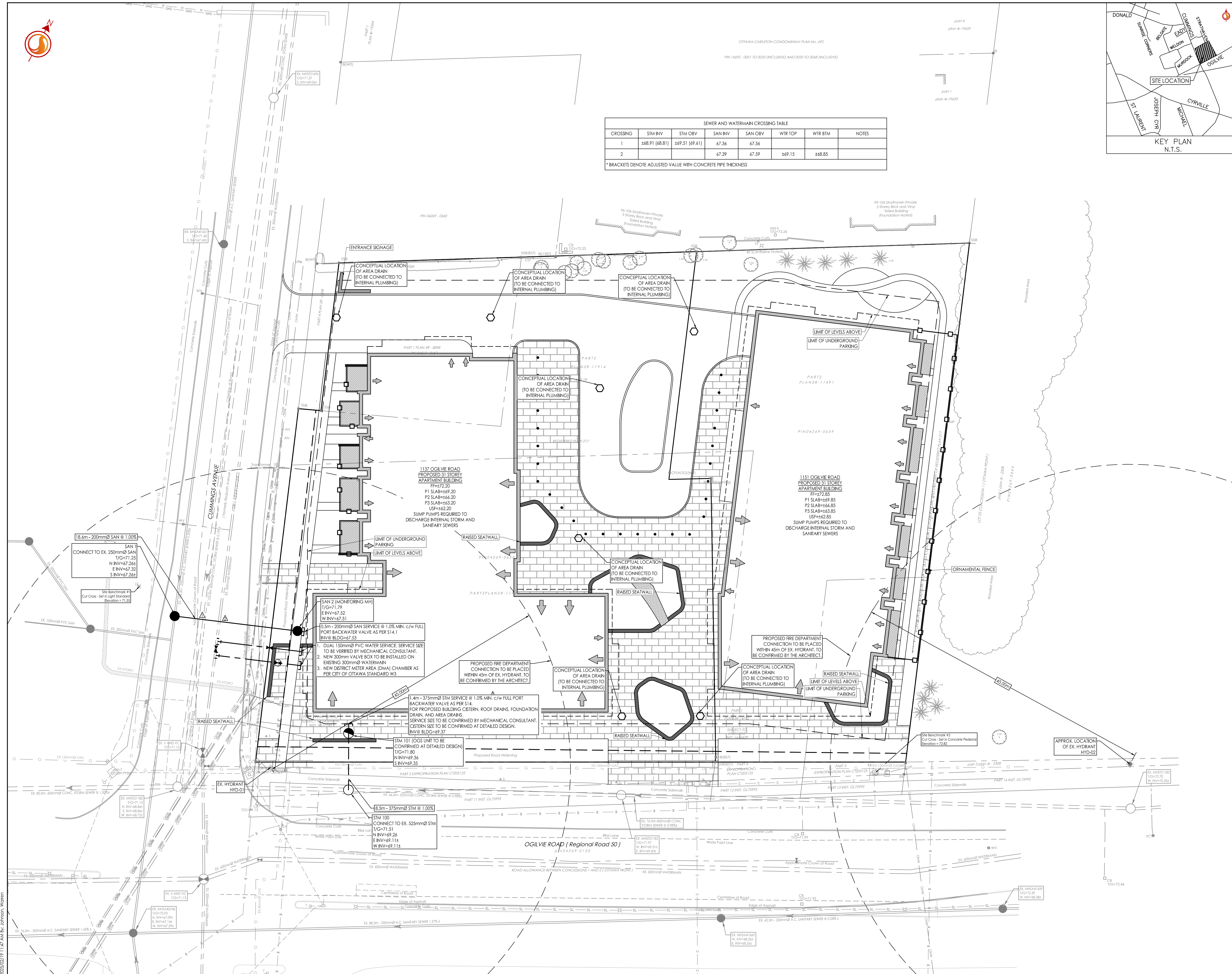
Copyright Reserved

The Contractor shall verify and be responsible for all dimensions. DO NOT scale the drawing - any errors or omissions shall be reported to Stantec without delay.
The Copyrights to all designs and drawings are the property of Stantec. Reproduction or use for any purpose other than that authorized by Stantec is forbidden.

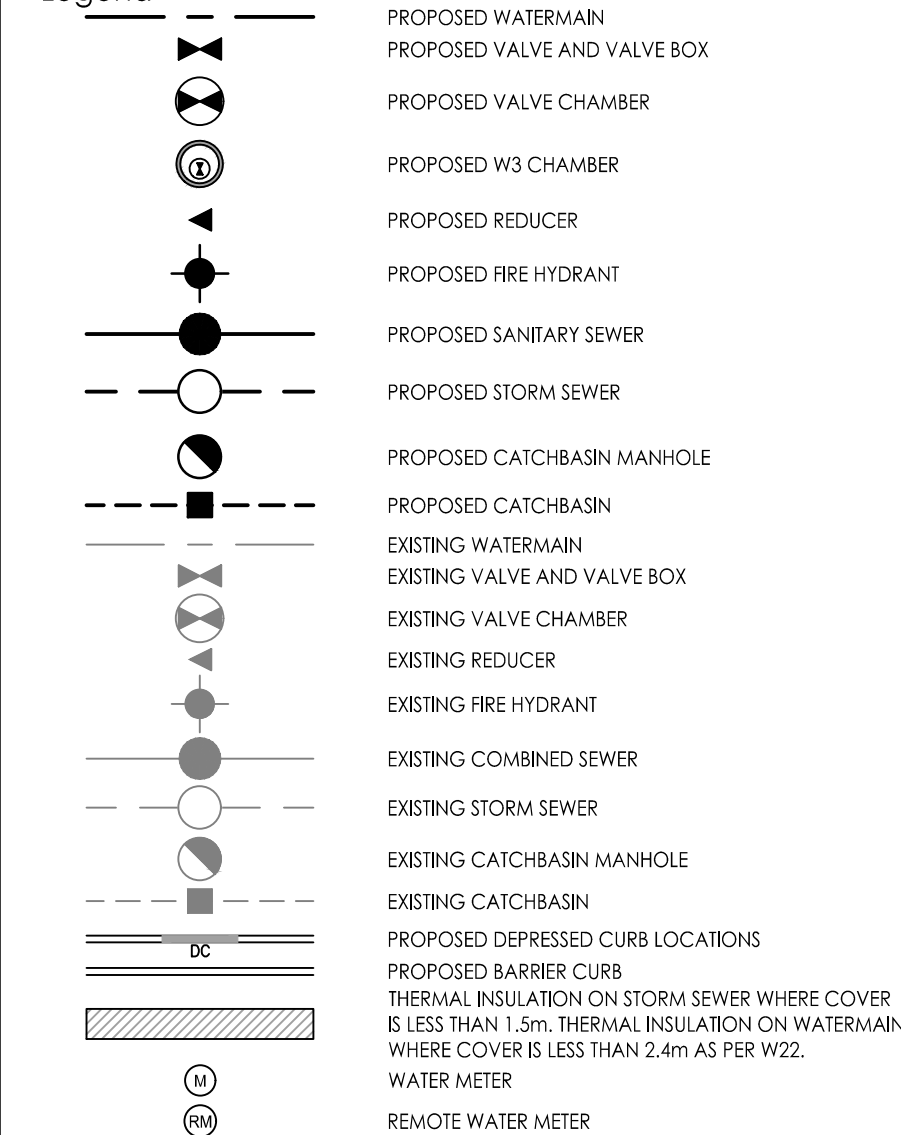


CROSSING	STM INV	STM OBV	SAN INV	SAN OBV	WTR TOP	WTR BTM	NOTES
1	±68.91 (68.81)	±69.51 (69.61)	67.36	67.56			
2			67.39	67.59	±69.15	±68.85	

*BRACKETS DENOTE ADJUSTED VALUE WITH CONCRETE PIPE THICKNESS



Legend



Notes

- ALL AREA AND TRENCH DRAINS TO BE CONNECTED TO INTERNAL PLUMBING AND COLLECTED IN STORM WATER MANAGEMENT CISTERN. DESIGN AND INSTALLATION BY OTHERS.
- FINAL SERVICE LATERAL SIZE, LOCATION AND ELEVATION AND METER AND REMOTE METER LOCATIONS TO BE CONFIRMED BY MECHANICAL CONSULTANT.
- THE LOCATION OF UTILITIES IS APPROXIMATE ONLY AND THE EXACT LOCATION SHOULD BE DETERMINED BY CONSULTING THE MUNICIPAL AUTHORITIES AND UTILITY COMPANIES CONCERNED. THE CONTRACTOR SHALL PROVE THE LOCATION OF UTILITIES AND SHALL BE RESPONSIBLE FOR THEIR PROTECTION AND THE IMPLEMENTATION OF ANY NECESSARY PROCEDURES CALLED FOR IN THE APPROPRIATE STANDARD AND REGULATIONS. ANY CONFLICTS WITH EXISTING SERVICES MUST BE REPORTED TO THE ENGINEER PRIOR TO CONTINUING WITH CONSTRUCTION.
- SUMP PUMP REQUIRED TO DISCHARGE INTERNAL STORM AND SANITARY SEWERS. TO BE DESIGNED BY THE MECHANICAL CONSULTANT.
- STORMWATER MANAGEMENT TO BE PROVIDED THROUGH A CISTERN LOCATED IN THE UNDERGROUND PARKING. CISTERN SIZE AND RELEASE RATE TO BE DETERMINED DURING DETAILED DESIGN.
- BOOSTER PUMPS TO BE PROVIDED TO MAINTAIN MINIMUM PRESSURES FOR TOWERS 6-STORIES AND HIGHER.
- FLOOR DRAINS LOCATED INSIDE PARKING GARAGE TO BE CONNECTED TO BUILDING INTERNAL SANITARY SEWER.
- USP TO BE CONFIRMED BY THE STRUCTURAL CONSULTANT.
- SITE PLAN PREPARED BY RODRICK LAHEY ARCHITECT INC. DATED FEBRUARY 6, 2025.
- TOPOGRAPHIC SURVEY SUPPLIED BY ANNIS, OSULIVAN, VOLLEBEK LTD. PROJECT No. 24453-23. TOPOGRAPHIC PLAN OF SURVEY PART OF LOT 18 REGISTERED PLAN 217 CITY OF OTTAWA DATED NOVEMBER 19, 2024.

Revision	By	Appd.	Date
1	WAJ	KJK	25.02.19

Permit/Seal	Dwn.	Chkd.	Dgn.	Date
	WAJ	KJK	WAJ	25.01.29

Client/Project
TC UNITED DEVELOPMENT CORPORATION

1137/1151 OGLIVIE ROAD AND
1111 CUMMINGS AVENUE
OTTAWA, ON

Title
CONCEPTUAL SITE SERVICING PLAN

Project No. 160402095	Scale 1:250	Sheet SSP-1	Revision 2 of 5
--------------------------	----------------	----------------	--------------------

X:\2025\1137_1151_Ogilvie\Design\Drawings\160402095-SSP.dwg
2025/02/19 11:47 AM RY-250219-01.dwg