



40 YEAR CANOPY CALCULATION:

-1,520 m2 site area

-5 small trees and 8 columnar trees proposed
(7m2 ea)
=105m2 canopy cover =6.9% canopy cover

Small and columnar trees calculated at 3m spread.

LEGAL DESCRIPTION:

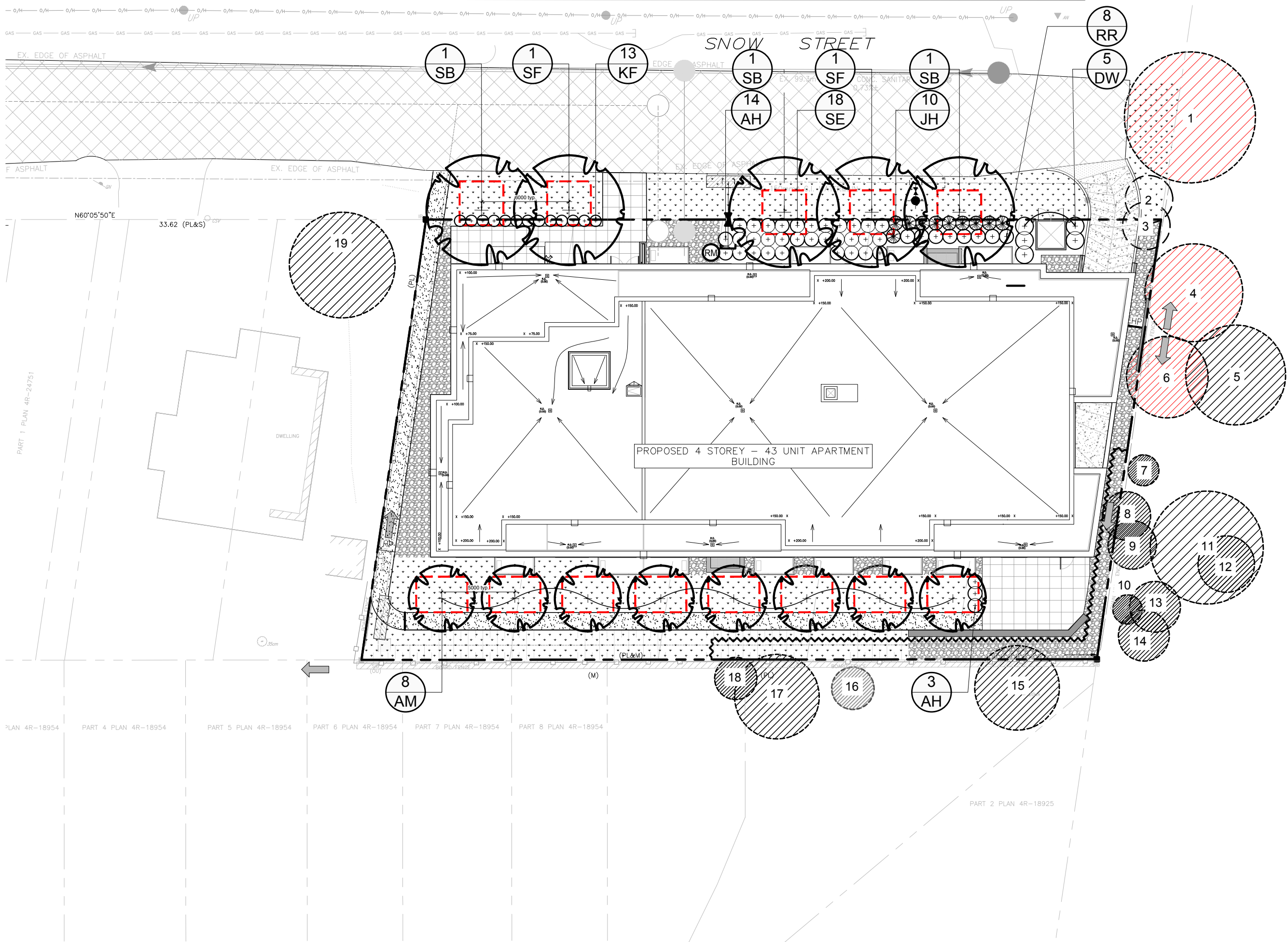
LOTS 50, 51, 52, 53 & 54
OF REGISTERED PLAN
323

KEY PLAN N.T.S.

PROPOSED PLANT LIST

KEY	QTY.	BOTANICAL NAME	COMMON NAME	SIZE	CONDITION	REMARKS
TREES						
* AM	8	Acer x freemanii 'Armstrong'	Armstrong Maple	50mm cal.	B&B	Proposed on private property
* SB	3	Amelanchier canadensis	Shadblow Serviceberry	50mm cal.	B&B	Proposed on city property
* SF	2	Amelanchier laevis 'JFS-ARB'	Spring Flurry Serviceberry	50mm cal.	B&B	Proposed on city property
SHRUBS						
AH	17	Hydrangea arborescens 'Annabelle'	Annabelle Hydrangea	1 gallon pot	Potted	Space 1000mm o.c.
* DW	5	Cornus sericea	Red Osier Dogwood	800mm ht.	Potted	Space 1200mm o.c.
* JH	10	Juniperus horizontalis	Creeping Juniper	600mm spr.	Potted	Space 800mm o.c.
RR	8	Rosa rugosa	Rugosa Rose	800mm ht.	Potted	Space 1000mm o.c.
SE	18	Sorbaria sorbifolia 'Sem'	Sem False Spirea	600mm ht.	Potted	Space 1000mm o.c.
ORNAMENTAL GRASSES						
KF	13	Calamagrostis 'Karl Foerster'	Karl Foerster Grass	250mm pot.	Potted	Space 800mm o.c.

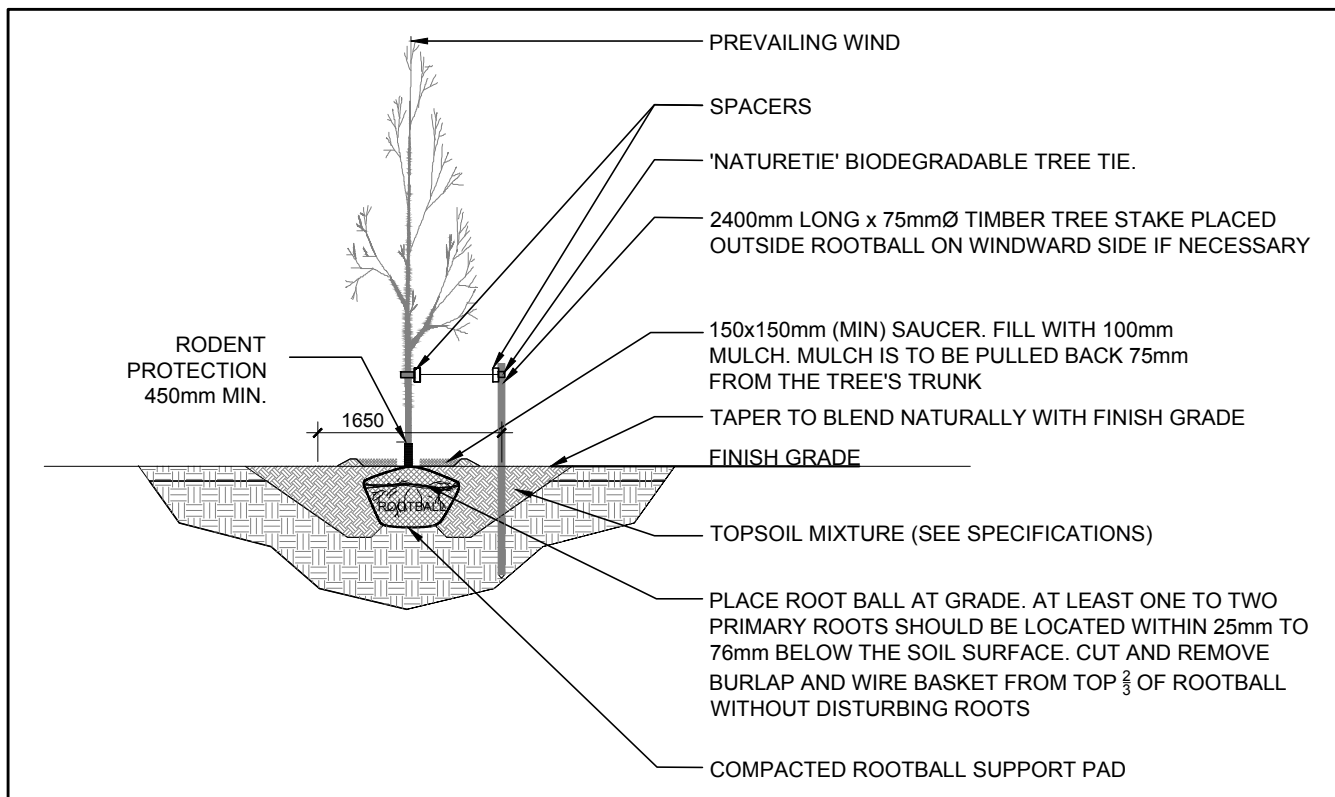
*NATIVE TO ONTARIO. ALL SHRUBS AND ORNAMENTAL GRASSES ARE PROPOSED ON PRIVATE PROPERTY



1 TREE CONSERVATION REPORT & LANDSCAPE PLAN

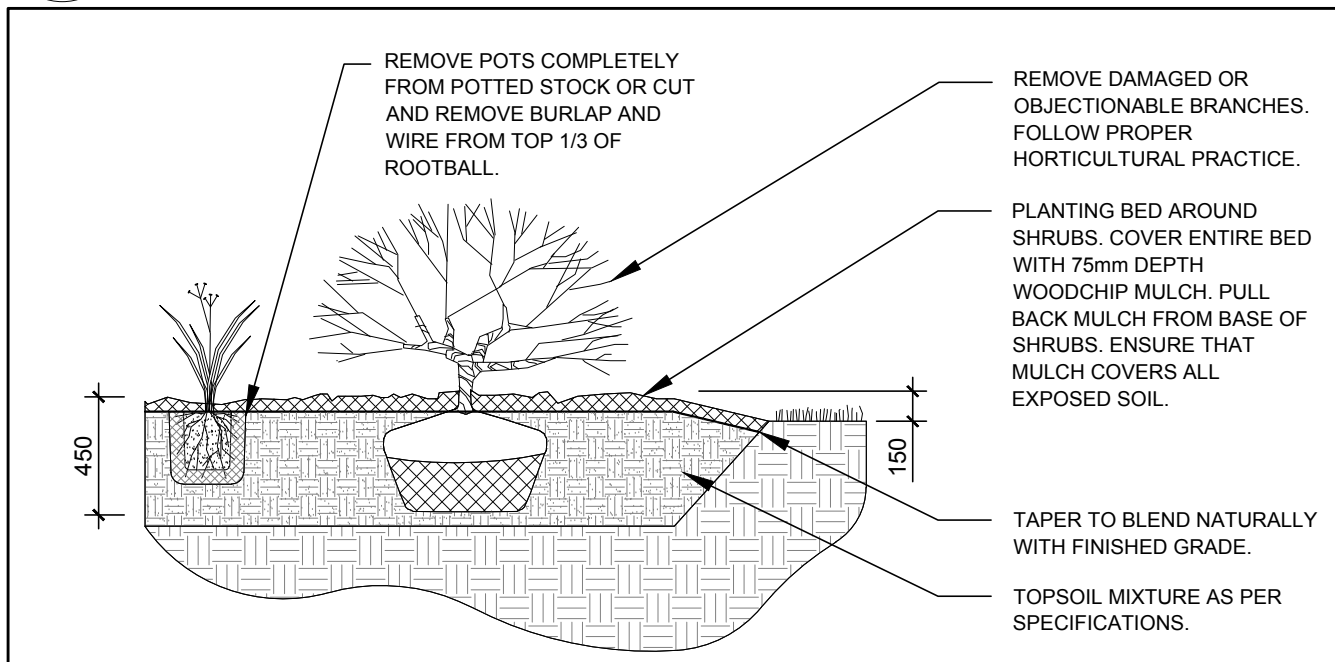
L.1 SCALE 1:250

0 2 4 6 8 10m



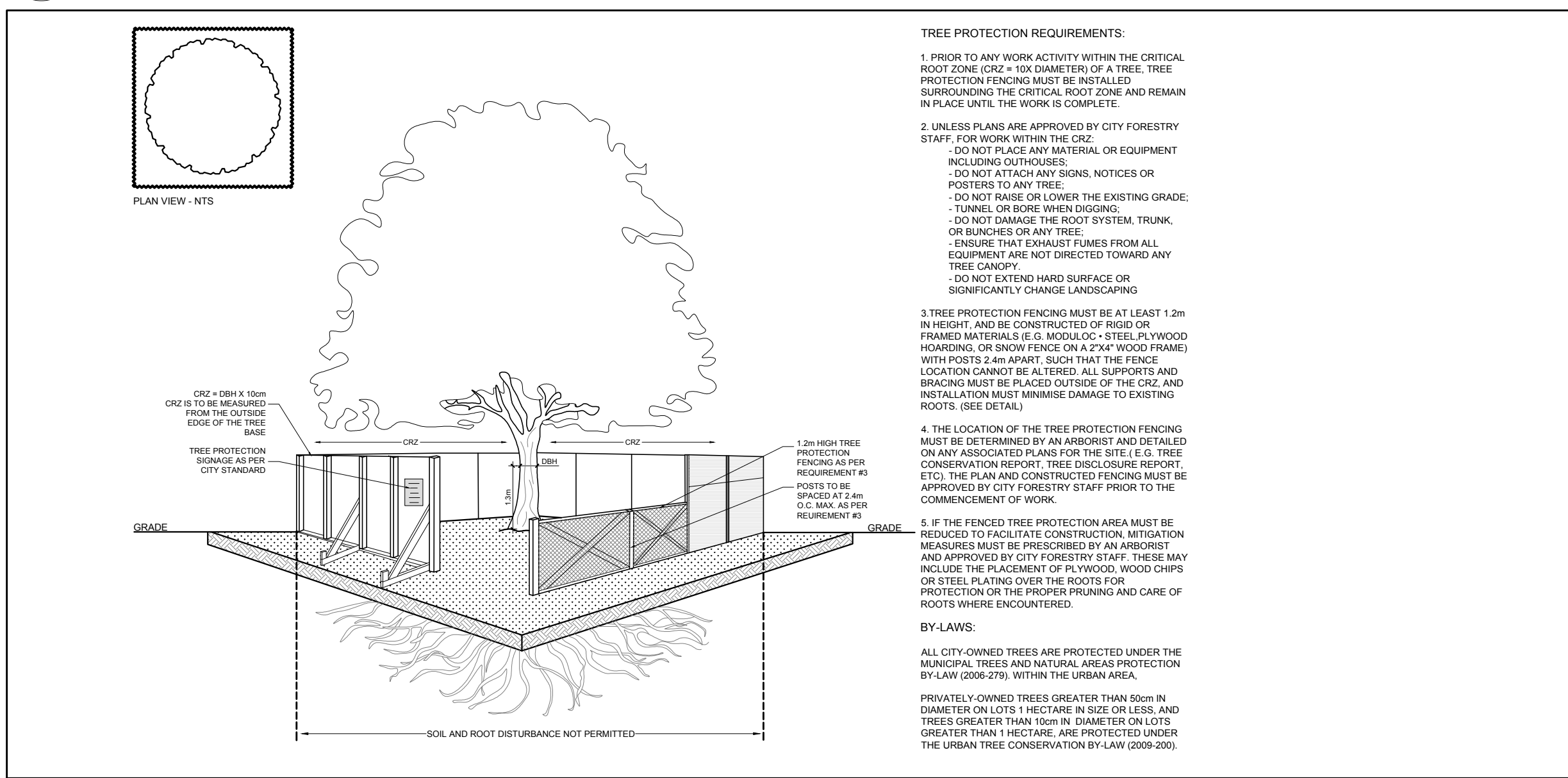
2 DECIDUOUS TREE PLANTING

L.1 SCALE: NTS



3 SHRUB / ORNAMENTAL GRASS PLANTING

L.1 SCALE: NTS



4 TREE PROTECTION FENCE

L.1 SCALE: NTS

EXISTING TREE LIST

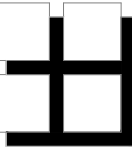
KEY	QTY.	BOTANICAL NAME	COMMON NAME	SIZE	CONDITION	REMARKS	OWNERSHIP	COMMENTS
1	1	Acer saccharum	Sugar Maple	460mm DBH	DEAD	To remain	NCC	Tree is dead with 0% leaf canopy
2	1	Fagus grandifolia	American Beech	350mm DBH	GOOD	To be removed	City of Ottawa	Tree is in good condition
3	1	Fagus grandifolia	American Beech	3x400mm DBH	GOOD	To be removed	1146 Snow Street	3 stemmed tree is in good condition
4	1	Fraxinus spp.	Ash	350mm DBH	DEAD	To remain	NCC	Tree is dead with 0% leaf canopy
5	1	Populus tremuloides	Trembling Aspen	350mm DBH	GOOD	To remain	NCC	Tree is in good condition
6	1	Populus tremuloides	Trembling Aspen	400mm DBH	DEAD	To remain	NCC	Tree is dead and has fallen over
7	1	Rhamnus cathartica	Common Buckthorn	100mm DBH	GOOD	To remain	NCC	Tree is in good condition- invasive species
8	1	Acer rubrum	Red Maple	170mm DBH	GOOD	To remain	NCC	Tree is in good condition
9	1	Tilia americana	Basswood	180mm DBH	GOOD	To remain	NCC	Tree is in good condition
10	1	Rhamnus cathartica	Common Buckthorn	3x100mm DBH	GOOD	To remain	NCC	Tree is in good condition- invasive species
11	1	Populus tremuloides	Trembling Aspen	400mm DBH	GOOD	To remain	NCC	Tree is in good condition
12	1	Ostrya virginiana	Ironwood	200mm DBH	GOOD	To remain	NCC	Tree is in good condition
13	1	Populus tremuloides	Trembling Aspen	180mm DBH	GOOD	To remain	NCC	Tree is in good condition
14	1	Populus tremuloides	Trembling Aspen	170mm DBH	GOOD	To remain	NCC	Tree is in good condition
15	1	Pinus strobus	White Pine	300mm DBH	GOOD	To remain	521 Burleigh private	Tree is in good condition- size and location estimated
16	1	Ulmus americana	American Elm	150mm DBH	GOOD	To remain	521 Burleigh private	Tree is in good condition- size and location estimated
17	1	Pinus strobus	White Pine	300mm DBH	GOOD	To remain	521 Burleigh private	Tree is in good condition- size and location estimated
18	1	Picea pungens	Colorado Spruce	150mm DBH	GOOD	To remain	517 Burleigh private	Tree is in good condition- size and location estimated
19	1	Picea glauca	White Spruce	400mm DBH	GOOD	To remain	1142 Snow Street	Tree is in good condition- size and location estimated

CLIENT

1146 SNOW STREET
INC.

CONSULTANTS

ARCHITECTS:



M. David Blakely
Architect Inc.

2200 Prince of Wales Dr. Suite 101 Ottawa, Ontario
Phone (613) 226-8811 Fax (613) 226-7942 k2E 629

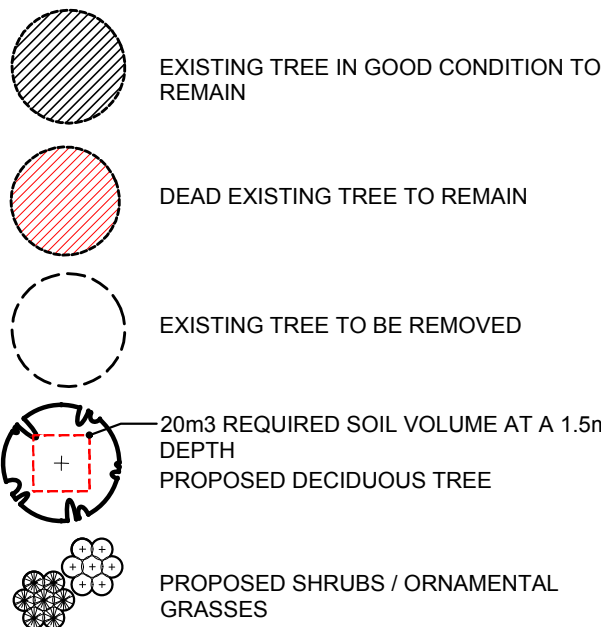
CIVIL ENGINEERS & SURVEYORS



Stantec Consulting Ltd.

400 - 1331 Clyde Avenue
Ottawa ON
Tel. 613.722.4420
www.stantec.com

LEGEND



PROPOSED TREE PROTECTION FENCE

PROPOSED SOD

PROPOSED RIVERSTONE MULCH

PROPOSED PRECAST CONCRETE PAVERS

PROPOSED ASPHALT SIDEWALK

PROPOSED CONCRETE

5				
4				
3	ISSUED FOR DISCUSSION AND REVIEW	02/26/2025	ML	JL
2	REVISED PER ARCH. COMMENTS	07/24/2024	ML	JL
1	ISSUED FOR DISCUSSION AND REVIEW	07/23/2024	ML	JL

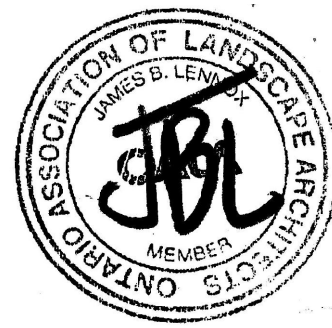
No.	Issue	Date	MM/DD/YY	DR	CK
-----	-------	------	----------	----	----

JAMES B. LENNOX & ASSOCIATES INC.
LANDSCAPE ARCHITECTS
3332 CARLING AVE. OTTAWA, ONTARIO K2H 5A8
Tel. (613) 722-5168 Fax. (866) 343-3942

PROJECT
4 STOREY - 43 UNIT APARTMENT BUILDING
1146 SNOW STREET, OTTAWA ON

DRAWING
TREE CONSERVATION REPORT &
LANDSCAPE PLAN

STAMP



SCALE

AS SHOWN

START DATE

JULY 2024

PROJECT NO.

24MIS2435

DRAWING NO.

L.1

PLOT SIZE ARCH-D