

PRELIMINARY

**PLAN OF SURVEY OF
PART OF LOT 14
CONCESSION 2
GEOGRAPHIC TOWNSHIP OF
NORTH GOWER
NOW IN THE
CITY OF OTTAWA**
Surveyed by Annis, O'Sullivan, Vollebek Ltd.

SCHEDULE				
AREA (Sq.m.)	PART	LOT	CONCESSION	PIN
22028	1	PART OF 14	2	PART OF 03908-0030

Scale 1 : 750



The intended plot size of the plan is 610 mm in width by 457 mm in height when plotted at a scale of 1:750

Metric
DISTANCES AND COORDINATES SHOWN ON THIS PLAN ARE IN METRES AND CAN BE CONVERTED TO FEET BY DIVIDING BY 0.3048.

Surveyor's Certificate

- I CERTIFY THAT:
- This survey and plan are correct and in accordance with the Surveys Act, the Surveyors Act and the Land Titles Act and the regulations made under them.
 - The survey was completed on the 29th day of January, 2025.

MMM DD YYYY Date Emmett Ketchum Ontario Land Surveyor

This plan of survey relates to AOLS Plan Submission Form Number V-95582.

Notes & Legend

- Denotes Survey Monument Planted
- Survey Monument Found
- SIB Standard Iron Bar
- SSIB Short Standard Iron Bar
- IB Iron Bar
- SIBØ Round Standard Iron Bar
- CM Concrete Monument
- (WIT) Witness
- Meas. Measured
- (P1) Plan 4R-12069
- (P2) Registered Plan 13291 (MTO Plan P-1590-50)
- (P3) MTO Plan 1590
- PWF Post & Wire Fence

Distances shown on this plan are ground distances and can be converted to grid distances by multiplying by the combined scale factor of 0.999933.

Bearings are grid, derived from Can-Net 2016 Real Time Network GPS observations on reference points A and B, shown hereon, having a bearing of N27°40'40"W and are referenced to MTM Zone 9 (76°30' West Longitude) NAD-83 (CSRS)(2010).

For bearing comparisons, a rotation of 0°35'50" counter-clockwise was applied to bearings on plans (P1),(P2) & (P3).

Coordinates are derived from Can-Net 2016 Real Time Network GPS observations referenced to MTM Zone 9 (76°30' West Longitude) NAD-83 (CSRS)(2010).

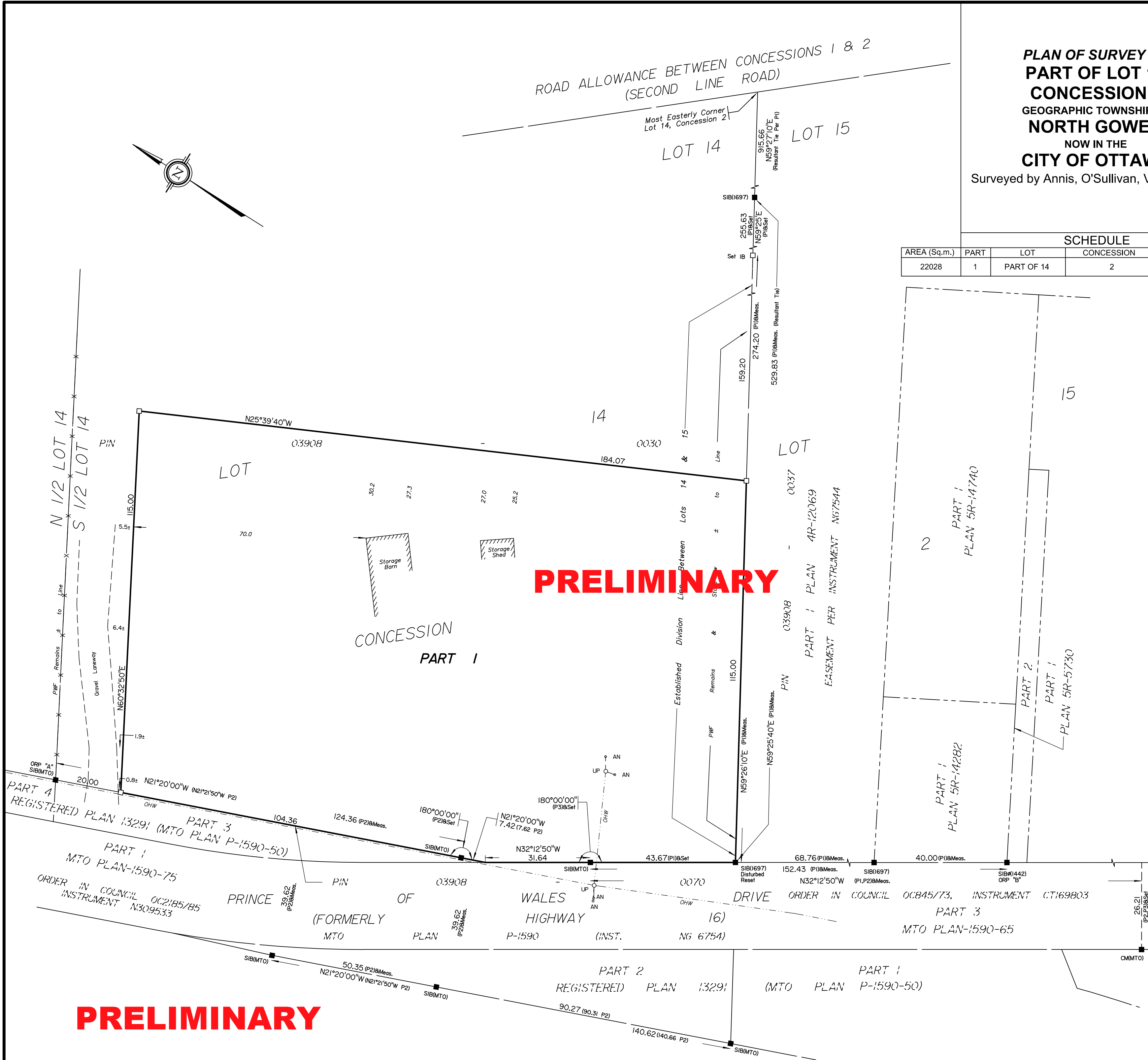
Coordinate values are to urban accuracy in accordance with O. Reg. 216/10.

. ORP A Northing 5002765.17 Easting 366936.17
. ORP B Northing 5002486.68 Easting 367082.25

Caution: Coordinates cannot, in themselves, be used to re-establish corners or boundaries shown on this plan.

ANNIS, O'SULLIVAN, VOLLEBEK LTD.
113 Prescott Street, Box 1340
Kemptville, Ontario K0G 1J0
Phone: (613) 258-1717
Email: Kemptville@aovltd.com

Ontario Land Surveyors K-13999-25 Marlboro Forms P1L14, C2 NG R D2



PRELIMINARY