

**BLOCK (2) - NORTH SIDE - LOT 2 - TOWERS E1 & E2 \_ 2025-01-28**

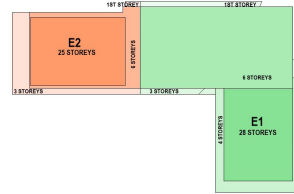
PHASE I - TOWER E1															TOTAL										GROSS AREA								
FLOORS	MULTIPLE	BACH.	1 BED.			1 BED. + D.			2 BED.			2 BED. + D.			3 BED. + Town Houses (GH)			TOTAL	RESIDENTIAL AREA			COMMON AREA / FLOOR			RETAIL AREA / FLOOR			SERVICES AREA / FLOOR			GROSS AREA		
			/FLOOR	TOTAL	/FLOOR	TOTAL	/FLOOR	TOTAL	/FLOOR	TOTAL	/FLOOR	TOTAL	/FLOOR	TOTAL	/FLOOR	TOTAL	/FLOOR		TOTAL	/FLOOR	TOTAL	/FLOOR	TOTAL	/FLOOR	TOTAL	/FLOOR	TOTAL	/FLOOR	TOTAL	/FLOOR	TOTAL	/FLOOR	TOTAL
(E1) FLOORS 7 to 28	22	1	22	4	88	0	0	4	88	0	0	0	0	0	0	9	198	637	14,014	6,837	0	0	0	0	0	0	113	2,486	26,739	750	16,500	177,606	
PODIUM FLOOR 5 to 6	2	3	6	12	24	6	12	2	4	1	2	1	2	2	25	50	1,276	3,452	18,579	0	0	0	0	0	0	326	652	7,018	2,052	4,104	44,175		
PODIUM FLOOR 4	2	2	4	8	16	4	8	1	2	1	2	1	2	2	24	48	1,911	3,822	20,570	0	0	0	0	0	0	408	816	4,392	2,319	2,319	24,962		
PODIUM FLOORS 2 to 3	2	2	4	8	16	4	8	1	2	1	2	1	2	2	24	48	1,911	3,822	21,011	0	0	0	0	0	0	313	626	4,392	2,265	4,530	48,751		
PODIUM FLOOR 1	2	0	0	0	0	0	0	0	0	0	0	0	0	2	2	126	126	1,356	788	788	7,944	676	676	7,276	214	214	2,303	1,754	1,754	18,880			
<b>TOTAL</b>	<b>28</b>	<b>8</b>	<b>34</b>	<b>26</b>	<b>127</b>	<b>24</b>	<b>48</b>	<b>14</b>	<b>104</b>	<b>3</b>	<b>6</b>	<b>5</b>	<b>13</b>	<b>13</b>	<b>322</b>	<b>637</b>	<b>14,014</b>	<b>6,837</b>	<b>0</b>	<b>0</b>	<b>0</b>	<b>0</b>	<b>0</b>	<b>0</b>	<b>113</b>	<b>2,486</b>	<b>4,188</b>	<b>4,188</b>	<b>29,207</b>	<b>134,384</b>			
POURCENTAGE			10.6%		39.6%		12.1%		32.3%		1.6%		4.0%				80.1%																

PHASE II - TOWER E2															TOTAL										GROSS AREA								
FLOORS	MULTIPLE	BACH.	1 BED.			1 BED. + D.			2 BED.			2 BED. + D.			3 BED. + Town Houses (GH)			TOTAL	RESIDENTIAL AREA			COMMON AREA / FLOOR			RETAIL AREA / FLOOR			SERVICES AREA / FLOOR			GROSS AREA		
			/FLOOR	TOTAL	/FLOOR	TOTAL	/FLOOR	TOTAL	/FLOOR	TOTAL	/FLOOR	TOTAL	/FLOOR	TOTAL	/FLOOR	TOTAL	/FLOOR		TOTAL	/FLOOR	TOTAL	/FLOOR	TOTAL	/FLOOR	TOTAL	/FLOOR	TOTAL	/FLOOR	TOTAL	/FLOOR	TOTAL	/FLOOR	TOTAL
(E2) FLOORS 7 to 25	29	2	38	3	57	0	0	4	76	0	0	0	0	0	9	171	622	11,818	6,695	0	0	0	0	0	0	128	2,432	26,178	750	14,250	153,387		
PODIUM FLOOR 5 to 6	2	1	2	2	4	6	12	4	8	0	0	0	0	0	13	26	895	1,790	9,634	0	0	0	0	0	0	157	314	3,380	1,092	2,184	22,847		
PODIUM FLOOR 4	2	1	2	2	4	6	12	4	8	0	0	0	0	0	13	26	895	1,790	9,634	0	0	0	0	0	0	157	314	3,380	1,092	2,184	22,847		
PODIUM FLOORS 2 to 3	2	0	0	0	0	0	0	0	0	0	0	0	0	4	8	13	26	1,091	2,182	11,744	0	0	0	0	0	157	314	3,380	1,248	2,496	26,867		
PODIUM FLOOR 1	2	0	0	0	0	0	0	0	0	0	0	0	0	6	6	376	376	4,047	223	223	2,400	532	532	5,726	149	149	1,604	1,280	1,280	13,778			
<b>TOTAL</b>	<b>25</b>	<b>4</b>	<b>41</b>	<b>7</b>	<b>63</b>	<b>19</b>	<b>32</b>	<b>14</b>	<b>92</b>	<b>0</b>	<b>0</b>	<b>10</b>	<b>14</b>	<b>242</b>	<b>492</b>	<b>17,061</b>	<b>183,643</b>	<b>0</b>	<b>0</b>	<b>0</b>	<b>0</b>	<b>0</b>	<b>0</b>	<b>0</b>	<b>128</b>	<b>2,432</b>	<b>3,364</b>	<b>3,364</b>	<b>21,182</b>	<b>228,003</b>			
POURCENTAGE			16.9%		26.0%		13.2%		38.0%		0.0%		5.8%				80.5%																

TOTAL BLOCK 2															TOTAL										GROSS AREA								
FLOORS	MULTIPLE	BACH.	1 BED.			1 BED. + D.			2 BED.			2 BED. + D.			3 BED. + Town Houses (GH)			TOTAL	RESIDENTIAL AREA			COMMON AREA / FLOOR			RETAIL AREA / FLOOR			SERVICES AREA / FLOOR			GROSS AREA		
			/FLOOR	TOTAL	/FLOOR	TOTAL	/FLOOR	TOTAL	/FLOOR	TOTAL	/FLOOR	TOTAL	/FLOOR	TOTAL	/FLOOR	TOTAL	/FLOOR		TOTAL	/FLOOR	TOTAL	/FLOOR	TOTAL	/FLOOR	TOTAL	/FLOOR	TOTAL	/FLOOR	TOTAL	/FLOOR	TOTAL	/FLOOR	TOTAL
(E1) FLOORS 7 to 28	22	1	22	4	88	0	0	4	88	0	0	0	0	0	9	198	637	14,014	6,837	0	0	0	0	0	0	113	2,486	26,739	750	16,500	177,606		
(E2) FLOORS 7 to 25	29	2	38	3	57	0	0	4	76	0	0	0	0	0	9	171	622	11,818	6,695	0	0	0	0	0	0	128	2,432	26,178	750	14,250	153,387		
PODIUM FLOOR 5 to 6	2	1	2	2	4	6	12	4	8	0	0	0	0	0	13	26	895	1,790	9,634	0	0	0	0	0	0	157	314	3,380	1,092	2,184	22,847		
PODIUM FLOOR 4	2	1	2	2	4	6	12	4	8	0	0	0	0	0	13	26	895	1,790	9,634	0	0	0	0	0	0	157	314	3,380	1,092	2,184	22,847		
PODIUM FLOORS 2 to 3	2	0	0	0	0	0	0	0	0	0	0	0	0	4	8	13	26	1,091	2,182	11,744	0	0	0	0	0	157	314	3,380	1,248	2,496	26,867		
PODIUM FLOOR 1	2	0	0	0	0	0	0	0	0	0	0	0	0	6	6	376	376	4,047	223	223	2,400	532	532	5,726	149	149	1,604	1,280	1,280	13,778			
<b>TOTAL</b>	<b>28</b>	<b>8</b>	<b>34</b>	<b>26</b>	<b>127</b>	<b>24</b>	<b>48</b>	<b>14</b>	<b>104</b>	<b>3</b>	<b>6</b>	<b>5</b>	<b>13</b>	<b>322</b>	<b>637</b>	<b>14,014</b>	<b>6,837</b>	<b>0</b>	<b>0</b>	<b>0</b>	<b>0</b>	<b>0</b>	<b>0</b>	<b>0</b>	<b>113</b>	<b>2,486</b>	<b>4,188</b>	<b>4,188</b>	<b>29,207</b>	<b>134,384</b>			
POURCENTAGE			10.6%		39.6%		12.1%		32.3%		1.6%		4.0%				80.1%																



**BLOCK (1) - SOUTH SIDE - LOT 1 - TOWERS A, B, C1 & C2 \_ 2025-01-28**

PHASE III - TOWER A															TOTAL										GROSS AREA								
FLOORS	MULTIPLE	BACH.	1 BED.			1 BED. + D.			2 BED.			2 BED. + D.			3 BED.			TOTAL	RESIDENTIAL AREA			COMMON AREA / FLOOR			RETAIL AREA / FLOOR			SERVICES AREA / FLOOR			GROSS AREA		
			/FLOOR	TOTAL	/FLOOR	TOTAL	/FLOOR	TOTAL	/FLOOR	TOTAL	/FLOOR	TOTAL	/FLOOR	TOTAL	/FLOOR	TOTAL	/FLOOR		TOTAL	/FLOOR	TOTAL	/FLOOR	TOTAL	/FLOOR	TOTAL	/FLOOR	TOTAL	/FLOOR	TOTAL	/FLOOR	TOTAL	/FLOOR	TOTAL
(A) FLOORS 7 to 21	15	2	30	5	75	0	0	3	45	0	0	0	0	0	9	150	621	9,315	6,684	0	0	0	0	0	0	129	1,935	20,828	750	11,250	121,995		
PODIUM FLOOR 5 to 6	2	5	10	8	16	1	2	1	2	1	2	1	2	2	20	40	869	1,738	9,954	0	0	0	0	0	0	219	219	2,357	1,088	2,376	23,422		
PODIUM FLOOR 4	2	4	8	6	12	2	4	2	4	0	0	0	0	2	17	34	1,153	1,153	12,411	0	0	0	0	0	0	219	219	2,357	1,372	1,372	14,768		
PODIUM FLOORS 2 to 3	2	5	10	5	10	1	2	4	8	0	0	0	0	2	4	17	34	1,153	2,306	12,411	0	0	0	0	0	219	438	4,715	1,372	2,744	29,536		
PODIUM FLOOR 1	2	0	0	0	0	0	0	0	0	0	0	0	0	1	1	74	74	791	280	280	3,122	0	0	0	0	277	277	2,982	641	641	6,900		
<b>TOTAL</b>	<b>21</b>	<b>16</b>	<b>54</b>	<b>24</b>	<b>107</b>	<b>4</b>	<b>8</b>	<b>11</b>	<b>58</b>	<b>3</b>	<b>6</b>	<b>7</b>	<b>11</b>	<b>242</b>	<b>391</b>	<b>14,986</b>	<b>157,804</b>	<b>0</b>	<b>0</b>	<b>0</b>	<b>0</b>	<b>0</b>	<b>0</b>	<b>0</b>	<b>116</b>	<b>3,132</b>	<b>33,713</b>	<b>750</b>	<b>18,189</b>	<b>199,722</b>			
POURCENTAGE			22.3%		44.2%		2.5%		24.0%		2.5%		4.5%				80.2%																

PHASE IV - TOWER B															TOTAL										GROSS AREA								
FLOORS	MULTIPLE	BACH.	1 BED.			1 BED. + D.			2 BED.			2 BED. + D.			3 BED.			TOTAL	RESIDENTIAL AREA			COMMON AREA / FLOOR			RETAIL AREA / FLOOR			SERVICES AREA / FLOOR			GROSS AREA		
			/FLOOR	TOTAL	/FLOOR	TOTAL	/FLOOR	TOTAL	/FLOOR	TOTAL	/FLOOR	TOTAL	/FLOOR	TOTAL	/FLOOR	TOTAL	/FLOOR		TOTAL	/FLOOR	TOTAL	/FLOOR	TOTAL	/FLOOR	TOTAL	/FLOOR	TOTAL	/FLOOR	TOTAL	/FLOOR	TOTAL	/FLOOR	TOTAL
(B) FLOORS 7 to 33	27	1	27	4	108	0	0	3	81	0	0	0	0	1	27	9	243	634	17,118	6,824	0	0	0	0	0	116	3,132	33,713	750	20,250	217,971		
PODIUM FLOOR 5 to 6	2	2	4	5	10	3	6	3	6	0	0	0	0	1	2	14	28	890	1,860	10,011	0	0	0	0	0	0	284	568	6,114	1,214	2,428	26,135	
PODIUM FLOOR 4	2	2	4	5	10	3	6	3	6	0	0	0	0	1	2	14	28	890	1,860	10,011	0	0	0	0	0	0	284	568	6,114	1,214	2,428	26,135	
PODIUM FLOORS 2 to 3	2	2	4	6	12	3	6	2	4	0	0	0	0	1	2	14	28	890	1,860	10,011	0	0	0	0	0	0	284	568	6,114	1,203	2,406	25,899	
PODIUM FLOOR 1	2	1	2	3	6	3	6	1	6	1	1	1	1	1	10	10	106	106	1,420	200	200	2,214	0	0	0	0	324	324	3,488	1,223	1,223	13,154	
<b>TOTAL</b>	<b>33</b>	<b>8</b>	<b>38</b>	<b>23</b>	<b>138</b>																												

<b>PROJECT TOTAL</b>								
<b>UNIT MIX</b>								
FLOORS	MULTIPLE	BACH.	1 BED.	1 BED. + D.	2 BED.	2 BED. + D.	3 BED. + TH	TOTAL
TOWER A	21	56	107	6	57	6	11	243
TOWER B	33	38	138	18	95	1	33	323
TOWER C1	35	65	145	17	95	0	29	351
TOWER C2	31	37	147	7	52	6	38	287
BLOCK 1 TOTAL		196	537	48	299	13	111	1204
TOWER E1	28	34	127	39	104	5	13	322
TOWER E2	25	41	63	32	92	0	14	242
BLOCK 2 TOTAL		75	190	71	196	5	27	564
<b>PROJECT TOTAL</b>		<b>271</b>	<b>727</b>	<b>119</b>	<b>495</b>	<b>18</b>	<b>138</b>	<b>1768</b>

<b>PROJECT TOTAL</b>				
<b>AREAS</b>				
FLOORS	RETAIL AREA		COMMON AREA	
	m <sup>2</sup>	ft <sup>2</sup>	m <sup>2</sup>	ft <sup>2</sup>
TOWER A	0	0	290	3 122
TOWER B	0	0	202	2 174
TOWER C1	0	0	429	4 618
TOWER C2	0	0	786	8 461
BLOCK 1 TOTAL	0	0	1 707	18 374
TOWER E1	676	7 276	890	9 580
TOWER E2	532	5 726	223	2 400
BLOCK 2 TOTAL	1 208	13 003	1 113	11 980
<b>PROJECT TOTAL</b>	<b>1 208</b>	<b>13 003</b>	<b>2 820</b>	<b>30 354</b>