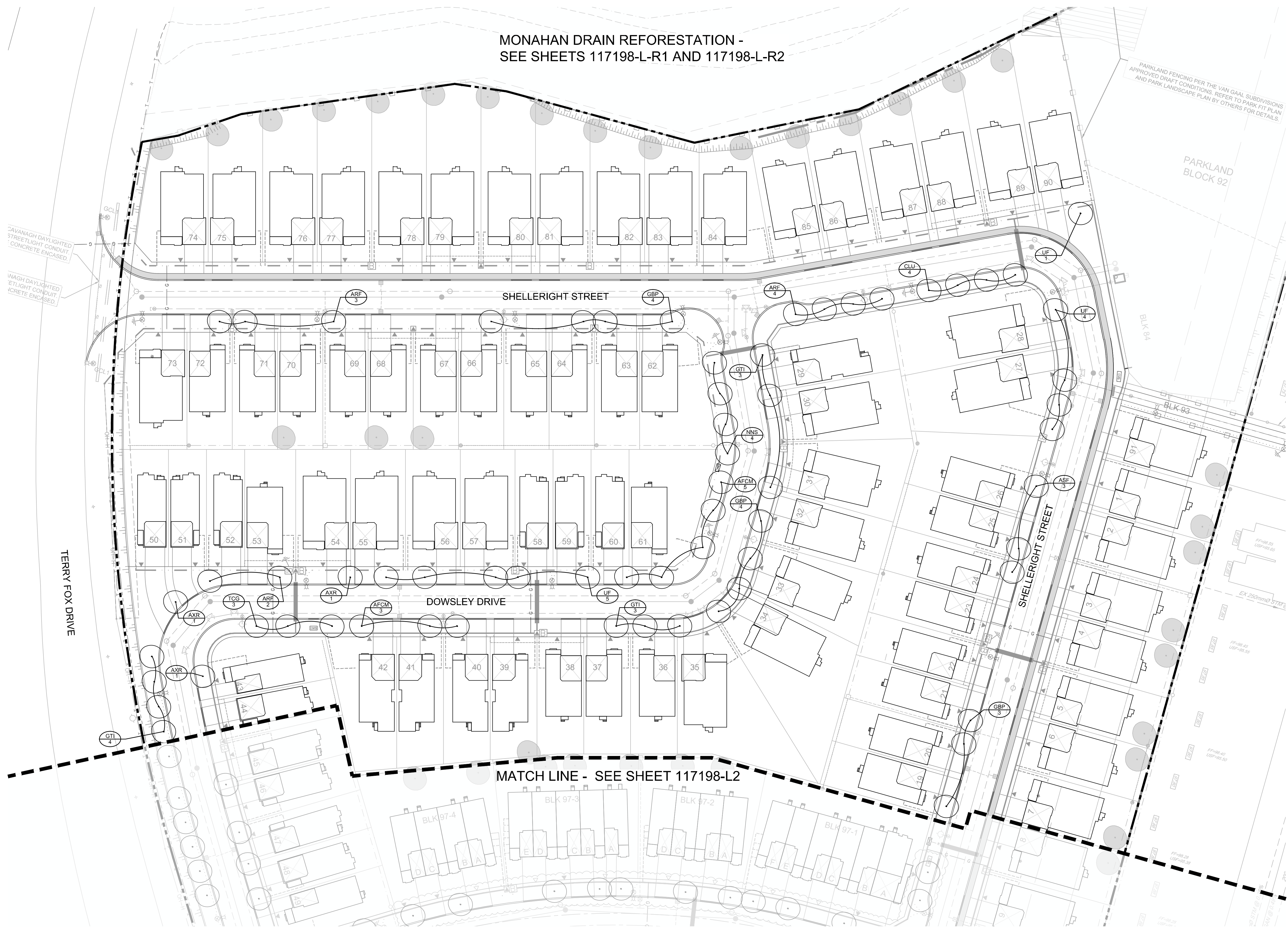


MONAHAN DRAIN REFORESTATION -
SEE SHEETS 117198-L-R1 AND 117198-L-R2



LEGEND

- PROPOSED DECIDUOUS TREE
- PROPOSED DECIDUOUS FOR SEPARATE PHASE
- PROPOSED POTENTIAL LOCATION FOR DECIDUOUS TREE

GENERAL

1. Read and interpret this drawing drawing set in conjunction with all the contract details and specifications, including related civil, utility, structural, architectural, mechanical, electrical, environmental, geotechnical, and survey information.
2. The Contractor is to determine the exact location, size, material, and elevation of all existing utilities prior to commencing construction. Protect and assume responsibility for all existing utilities regardless of being shown on the drawings.
3. It is essential to use the plans and details in conjunction with the specifications and notes.
4. Do not scale drawings. Work to dimensions only.
5. Protect all existing and retained vegetation for the duration of construction according to the contract details and specifications.
6. Reinstall all areas and items damaged or disturbed, beyond the Limit of Work, because of construction activities, including but not limited to construction staging areas, haul roads, stockpile areas, etc., to the satisfaction of the Consultant. Unless otherwise noted, Contractor is to reinstall all areas to pre-construction condition or better to the satisfaction of the Contract Administrator.

PLANTING

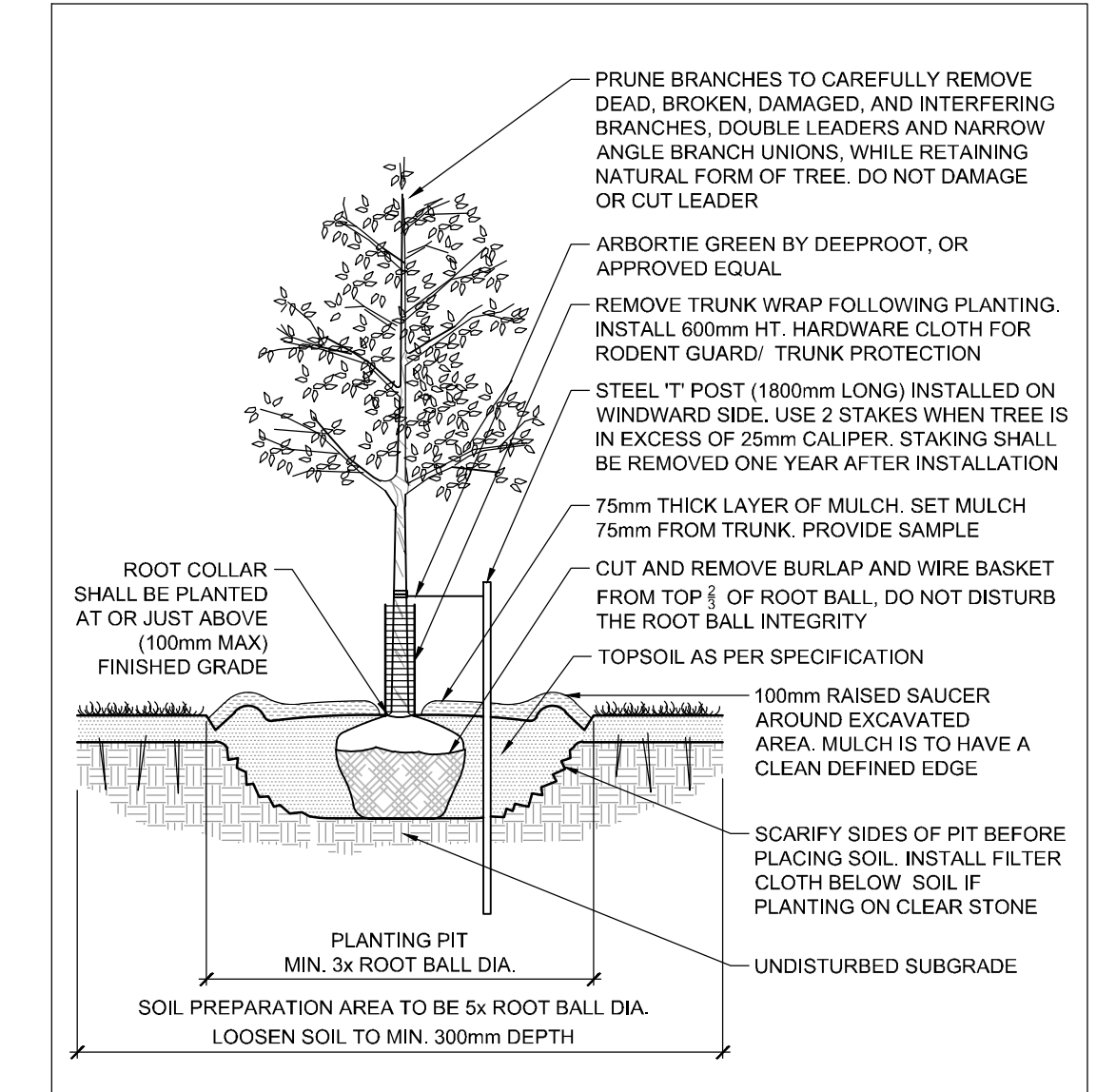
1. Plant material to be No. 1 Grade and is to comply with Canadian Standards for Nursery Stock (latest edition) published by the Canadian Nursery Landscape Association.
2. Use structurally sound plant material with strong fibrous root system free of disease, defects, and injuries. Use trees with straight trunks, well and characteristically branched for species. Obtain approval from consultant of plant material at source prior to digging. All trees and shrubs to be container grown, potted, WB or B/B, as indicated on Plant List. Bare root plants are only acceptable for certain species and as approved by the Landscape Architect.
3. Plant material substitutions are not permitted without the written approval from the Consultant, with 48 hours notice, prior to shipping plant material to installation.
4. Plant locations are schematic / approximate only. Contractor is to stake out locations on site for approval by the Landscape Architect prior to installation. Contractor will assume full responsibility if the Landscape Architect is not notified.
5. The illustrated number of plants shown in the Planting Plan supersedes the estimated number in the Plant List. Contractor to report any discrepancies to the Landscape Architect prior to installation. Contractor will assume full responsibility if the Landscape Architect is not notified.
6. Ensure trees are thoroughly watered following planting. Monitor material and ensure adequate moisture until acceptance.
7. In heavy clay or poorly drained soils, set root ball with root collar 75-100mm higher than finished grade.
8. Approved topsoil depths are as follows:
 - a. Plant Beds - 450mm continuous depth. Applies to shrubs, perennials, vines, and groundcovers.
 - b. Sod Areas - 100mm depth.
 - c. Reforestation - 300mm depth.
9. Sod to be No. 1 Kentucky Bluegrass Sod grown from minimum mixture of 3 Kentucky Bluegrass cultivars. Quality and source are to comply with Canadian Standards for Nursery Stock, Section 17, (latest edition) published by the Canadian Nursery Landscape Nursery Landscape Association.
10. Install a 1.2m sod strip adjacent to all hard surfaces. Note, sod is not typically graphically shown on plans.
11. Apply the following mineral fertilizer unless soil tests show other requirements:
 - a. Plant Beds - (8-32-16), i.e. 8% Nitrogen, 32% Phosphorus, 16% Potash per manufacturer specifications.
 - b. Sod Areas - (8-32-16), i.e. 8% Nitrogen, 32% Phosphorus, 16% Potash at a rate of 350kg/ha.
12. Where applicable, for any plant areas with a mix of species/cultivars notes, Contractor is to cluster like plants in groups of 3-5 and evenly distribute these in the noted area.

TREE PLANTING IN SENSITIVE CLAY

1. The landscape plans have been developed in accordance with the Geotechnical Report: Geotechnical Investigation, Proposed Residential Development, Terry Fox Drive at Cope Drive - Ottawa, prepared by Paterson Group, April 2, 2019.
2. The following City of Ottawa clay soils guideline applies: Guidelines for Tree Planting in Sensitive Marine Clay Soils (2017).
3. The soil volumes provided are sufficient for a reasonable chance of tree survival. Unless otherwise noted, all new trees on City property meet the minimum soil volume requirements of the following, based on a depth of 1.5m below finished grade, and subtracting the volume of utility trenches.
 - a. Small tree (mature height up to 7.5m) - 25m³/ minimum soil volume provided.
 - b. Medium tree (mature height 7.5-14m) - 30m³/ minimum soil volume provided.
 - c. Two (2) small trees - 15m³/ minimum soil volume provided per tree.
 - d. Two (2) medium trees - 18m³/ minimum soil volume provided per tree.

PLANT LIST

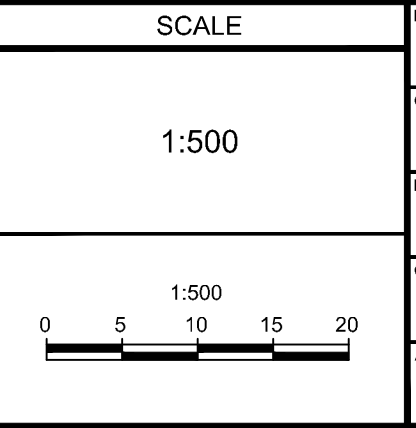
KEY	QTY	BOTANICAL NAME	COMMON NAME	SIZE	COND	SPACING
Deciduous Trees						
AFCM	8	<i>Acer x freemanii 'Celtan'</i>	Celebration Maple	50mm Cal	WB	As Shown
ARF	9	<i>Acer rubrum 'Autumn Flame'</i>	Autumn Flame Red Maple	50mm Cal	WB	As Shown
ASF	3	<i>Acer saccharum 'Flashfire'</i>	Flashfire Sugar Maple	50mm Cal	WB	As Shown
AR	3	<i>Ameiobacter x grandiflora 'Robin Hill'</i>	Robin Hill Serviceberry	50mm Cal	WB	As Shown
CLU	4	<i>Cladostis kentuckea (formerly 'lutea')</i>	Yellowwood	50mm Cal	WB	As Shown
GBP	11	<i>Ginkgo biloba 'Princeton Sentry'</i>	Princeton Sentry Ginkgo	50mm Cal	WB	As Shown
GTL	10	<i>Gleditsia lanceolata var. 'nereis 'Timpcoke'</i>	Imperial Honeylocust	50mm Cal	WB	As Shown
NMS	4	<i>Nyssa sylvatica 'Northern Splendor'</i>	Northern Splendor Black Gum	50mm Cal	WB	As Shown
TCG	3	<i>Tilia cordata 'Glenvean'</i>	Glenvean Linden	50mm Cal	WB	As Shown
UF	10	<i>Ulmus americana 'Frontier'</i>	Frontier Elm	50mm Cal	WB	As Shown



STANDARD DECIDUOUS TREE PLANTING D1

NOTE:
THE POSITION OF ALL POLE LINES, CONDUITS, WATERMANS, SEWERS AND OTHER UNDERGROUND AND OVERGROUND UTILITIES AND STRUCTURES IS NOT NECESSARILY SHOWN ON THE CONTRACT DRAWINGS, AND WHERE SHOWN, THE ACCURACY OF THE POSITION OF SUCH UTILITIES AND STRUCTURES IS NOT GUARANTEED. BEFORE STARTING WORK, DETERMINE THE EXACT LOCATION OF ALL SUCH UTILITIES AND STRUCTURES AND ASSUME ALL LIABILITY FOR DAMAGE TO THEM.

No.	REVISION	DATE	BY
7.	RE ISSUED FOR CONSTRUCTION	AUG 14/24	SC
6.	RE ISSUED FOR CONSTRUCTION	JAN 16/24	SC
5.	ISSUED FOR CONSTRUCTION	OCT 23/23	SC
4.	REVISED PER ZONING SETBACK UPDATES	AUG 16/23	SC
3.	REVISED PER CHANGES TO LOT FABRIC	AUG 1/23	SC
2.	ISSUED FOR CLIENT REVIEW	DEC 21/22	SC
1.	ISSUED FOR CLIENT REVIEW	NOV 19/22	SC



FOR REVIEW ONLY

NOVATECH ENGINEERS, PLANNERS & LANDSCAPE ARCHITECTS

117198-L-1

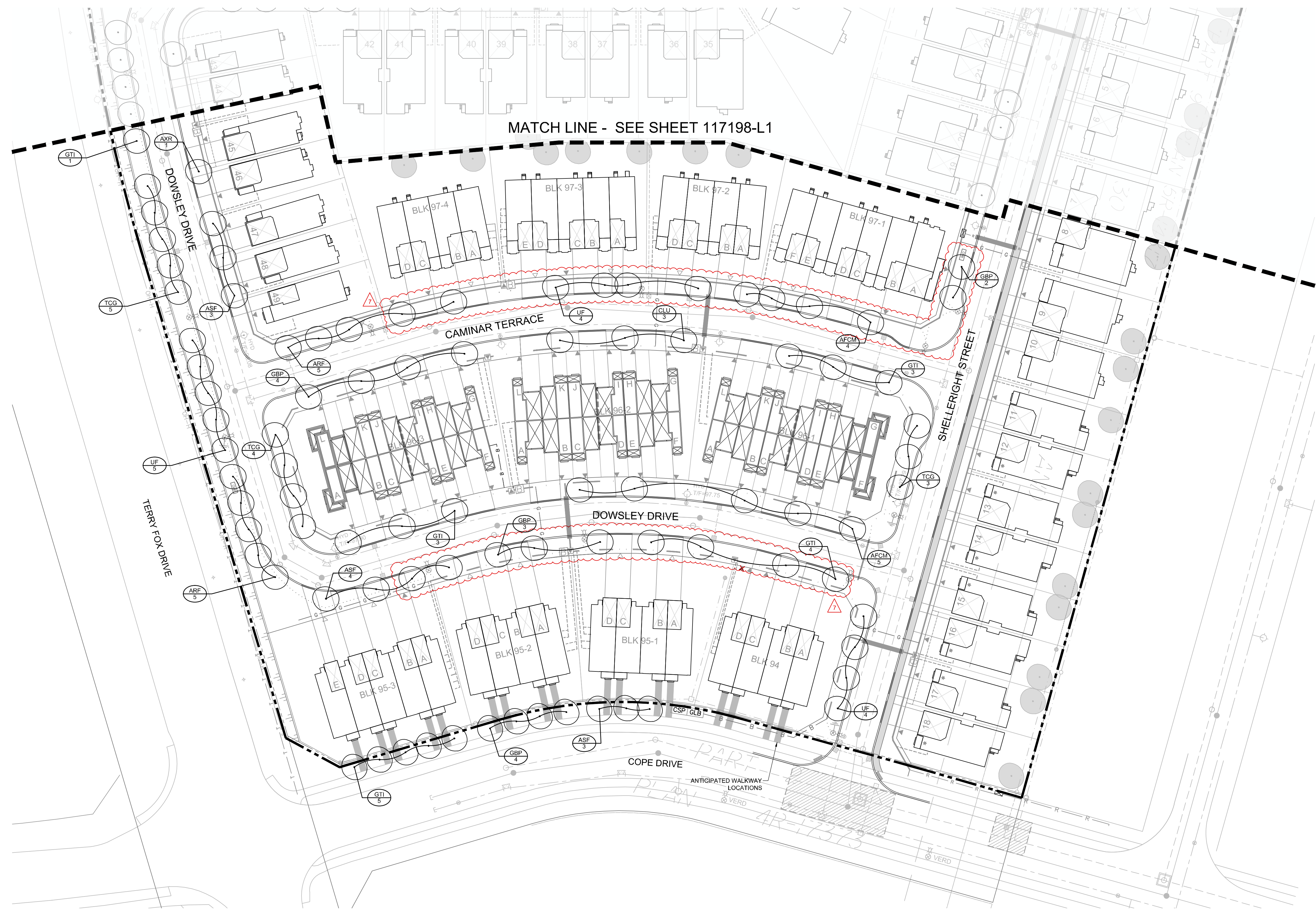
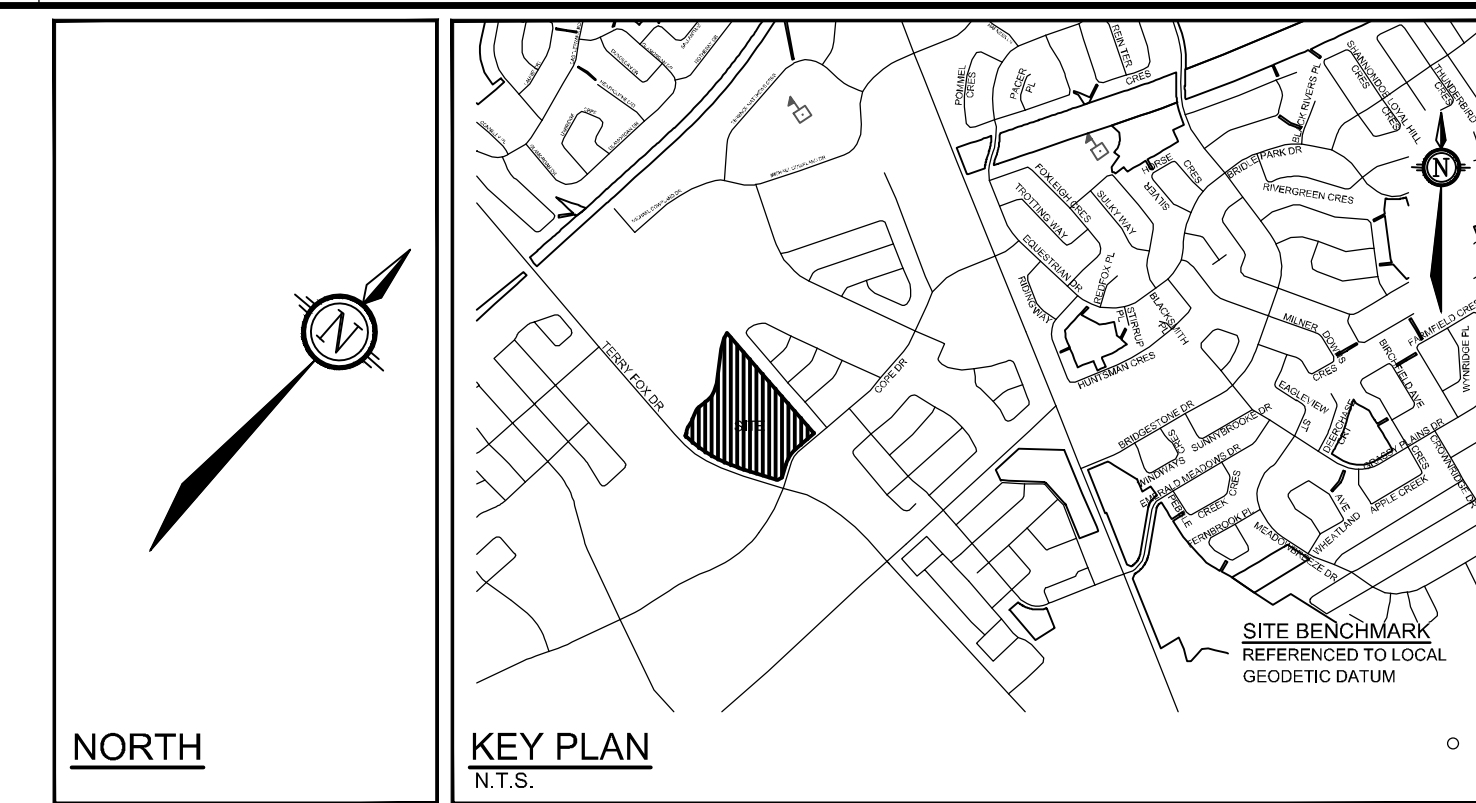
LOCATION: CITY OF OTTAWA, VAN GAAL LANDS - CLARIDGE DEVELOPMENT

DRAWING NAME: STREETSCAPE PLAN

PROJECT No.: 117198-00

REV: REV # 7

DRAWING No.: 117198-L-1



LEGEND

- PROPOSED DECIDUOUS TREE
- PROPOSED DECIDUOUS FOR SEPARATE PHASE
- PROPOSED POTENTIAL LOCATION FOR DECIDUOUS TREE

GENERAL

1. Read and interpret this drawing drawing set in conjunction with all the contract details and specifications, including related civil, utility, structural, architectural, mechanical, electrical, environmental, geotechnical, and survey information.
2. The Contractor is to determine the exact location, size, material, and elevation of all existing utilities prior to commencing construction. Protect and assume responsibility for all existing utilities regardless of being shown on the drawings.
3. It is essential to use the plans and details in conjunction with the specifications and notes.
4. Do not scale drawings. Work to dimensions only.
5. Protect all existing and retained vegetation for the duration of construction according to the contract details and specifications.
6. Reinstale all areas and items damaged or disturbed, beyond the Limit of Work, because of construction activities, including but not limited to construction staging areas, haul roads, stockpile areas, etc. to the satisfaction of the Consultant. Unless otherwise noted, Contractor is to reinstale all areas to pre-construction condition or better to the satisfaction of the Contract Administrator.

PLANTING

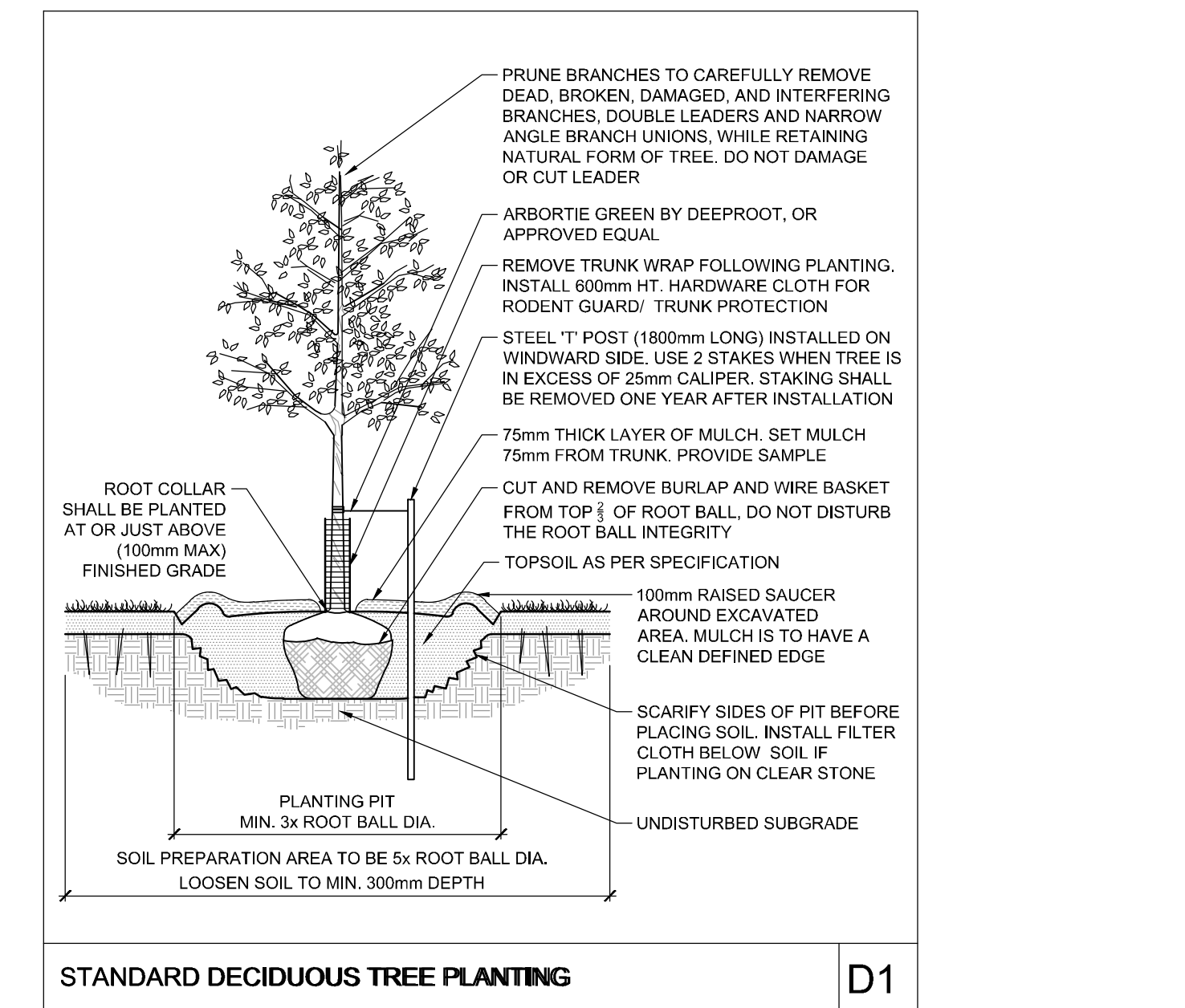
1. Plant material to be No. 1 Grade and is to comply with Canadian Standards for Nursery Stock (latest edition) published by the Canadian Nursery Landscape Association.
2. Use structurally sound plant material with strong fibrous root system free of disease, defects, and injuries. Use trees with straight trunks, well and characteristically branched for species. Obtain approval from consultant of plant material at source prior to digging. All trees and shrubs to be container grown, potted, WB or B/B, as indicated on Plant List. Bare root plants are only acceptable for certain species and as approved by the Landscape Architect.
3. Plant material substitutions are not be permitted without the written approval from the Consultant, with 48 hours notice, prior to shipping plant material. Contractor will assume full responsibility if the Landscape Architect is not notified.
4. Plant locations are schematic/ approximate only. Contractor is to stake out locations on site for approval by the Landscape Architect prior to installation.
5. The illustrated number of plants shown in the Planting Plan supersedes the estimated number in the Plant List. Contractor to report any discrepancies to the Landscape Architect prior to installation. Contractor will assume full responsibility if the Landscape Architect is not notified. Monitor material and ensure adequate moisture until acceptance.
6. Ensure trees are thoroughly watered following planting.
7. In heavy clay or poorly drained soils, set root ball with root collar 75-100mm higher than finished grade.
8. Approved topsoil depths are as follows:
 - a. Plant Beds - 450mm continuous depth. Applies to shrubs, perennials, vines, and groundcovers.
 - b. Sod Seed Areas - 100mm depth.
 - c. Reforestation - 300mm depth.
9. Sod to be No. 1 Kentucky Bluegrass Sod grown from minimum mixture of 3 Kentucky Bluegrass cultivars. Quality and source are to comply with Canadian Standards for Nursery Stock, Section 17, (latest edition) published by the Canadian Nursery Landscape Nursery Landscape Association.
10. Install a 1.2m sod strip adjacent to all hard surfaces. Note, sod is not typically graphically shown on plans.
11. Apply the following mineral fertilizer unless soil tests show other requirements:
 - a. Plant Beds - (8-32-16), i.e. 8% Nitrogen, 32% Phosphorus, 16% Potash per manufacturer specifications.
 - b. Sod Areas - (8-32-16), i.e. 8% Nitrogen, 32% Phosphorus, 16% Potash at a rate of 350g/ha.
12. Where applicable, for any plant areas with a mix of species/cultivars notes, Contractor is to cluster like plants in groups of 3-5 and evenly distribute these in the noted area.

TREE PLANTING IN SENSITIVE CLAY

1. The landscape plans have been developed in accordance with the Geotechnical Report: Geotechnical Investigation, Proposed Residential Development, Terry Fox Drive at Cope Drive - Ottawa, prepared by Paterson Group, April 2, 2019.
2. The following City of Ottawa clay soils guideline applies: Guidelines for Tree Planting in Sensitive Marine Clay Soils (2017).
3. The soil volumes provided are sufficient for a reasonable chance of tree survival. Unless otherwise noted, all new trees on City property meet the minimum soil volume requirements of the following, based on a depth of 1.5m below finished grade, and subtracting the volume of utility trenches.
 - a. Small tree (mature height up to 7.5m) - 25m³ minimum soil volume provided.
 - b. Medium tree (mature height 7.5-14m) - 30m³ minimum soil volume provided.
 - c. Two (2) small trees - 15m³ minimum soil volume provided per tree.
 - d. Two (2) medium trees - 18m³ minimum soil volume provided per tree.

PLANT LIST

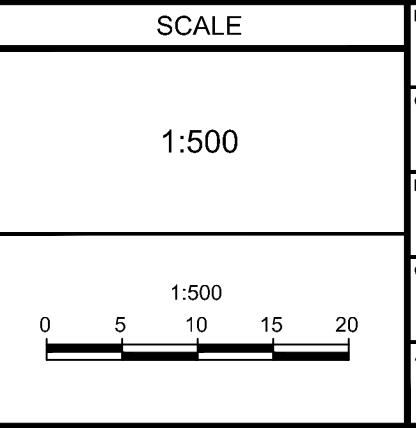
KEY	QTY	BOTANICAL NAME	COMMON NAME	SIZE	COND	SPACING
Deciduous Trees						
AFCM	9	<i>Acer x freemanii 'Celtzam'</i>	Celebration Maple	50mm Cal	WB	As Shown
ARF	13	<i>Acer rubrum 'Autumn Flame'</i>	Autumn Flame Red Maple	50mm Cal	WB	As Shown
ASF	7	<i>Acer saccharum 'Flamingo'</i>	Flamingo Sugar Maple	50mm Cal	WB	As Shown
AR	1	<i>Amelanchier x grandiflora 'Robin Hill'</i>	Robin Hill Serviceberry	50mm Cal	WB	As Shown
CLU	3	<i>Cladrasia kentuckea (formerly 'lutea')</i>	Yellowwood	50mm Cal	WB	As Shown
GBP	13	<i>Ginkgo biloba 'Princeton Sentry'</i>	Princeton Sentry Ginkgo	50mm Cal	WB	As Shown
GTI	16	<i>Gleditsia parviflora var. 'nervis 'Impicola'</i>	Imperial Honeylocust	50mm Cal	WB	As Shown
TCG	12	<i>Tilia cordata 'Glenkoven'</i>	Glenkoven Linden	50mm Cal	WB	As Shown
UF	13	<i>Ulmus americana 'Frontier'</i>	Frontier Elm	50mm Cal	WB	As Shown



STANDARD DECIDUOUS TREE PLANTING D1

NOTE:
THE POSITION OF ALL POLE LINES, CONDUITS, WATERMANS, SEWERS AND OTHER UNDERGROUND AND OVERGROUND UTILITIES AND STRUCTURES IS NOT NECESSARILY SHOWN ON THE CONTRACT DRAWINGS, AND WHERE SHOWN, THE ACCURACY OF THE POSITION OF SUCH UTILITIES AND STRUCTURES IS NOT GUARANTEED. BEFORE STARTING WORK, DETERMINE THE EXACT LOCATION OF ALL SUCH UTILITIES AND STRUCTURES AND ASSUME ALL LIABILITY FOR DAMAGE TO THEM.

No.	REVISION	DATE	BY
7.	RE ISSUED FOR CONSTRUCTION	AUG 14/24	SC
6.	RE ISSUED FOR CONSTRUCTION	JAN 9/24	SC
5.	ISSUED FOR CONSTRUCTION	OCT 23/23	SC
4.	REVISED PER ZONING SETBACK UPDATES	AUG 16/23	SC
3.	REVISED PER CHANGES TO LOT FABRIC	AUG 1/23	SC
2.	ISSUED FOR CLIENT REVIEW	DEC 21/22	SC
1.	ISSUED FOR CLIENT REVIEW	NOV 19/22	SC



FOR REVIEW ONLY

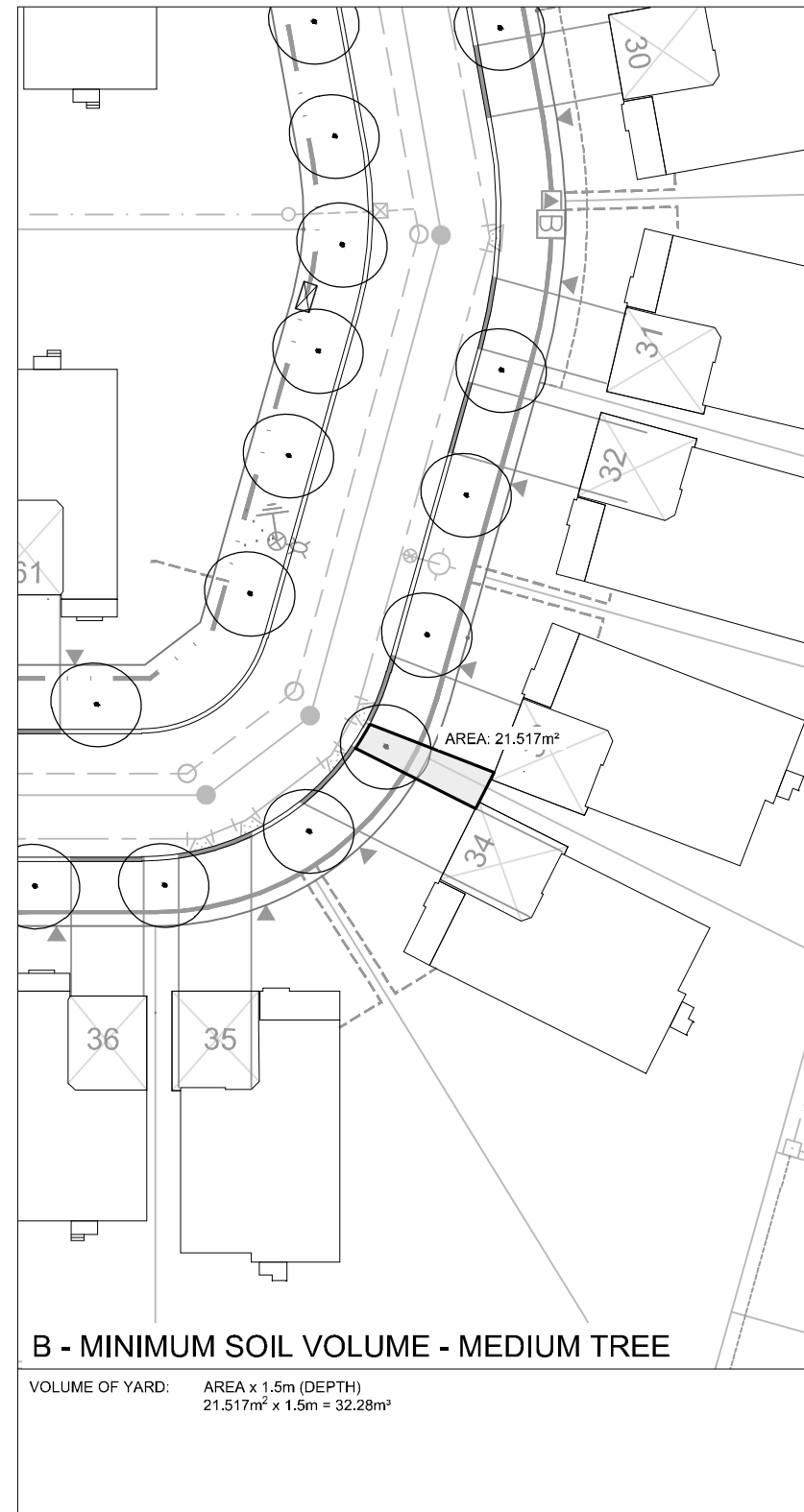
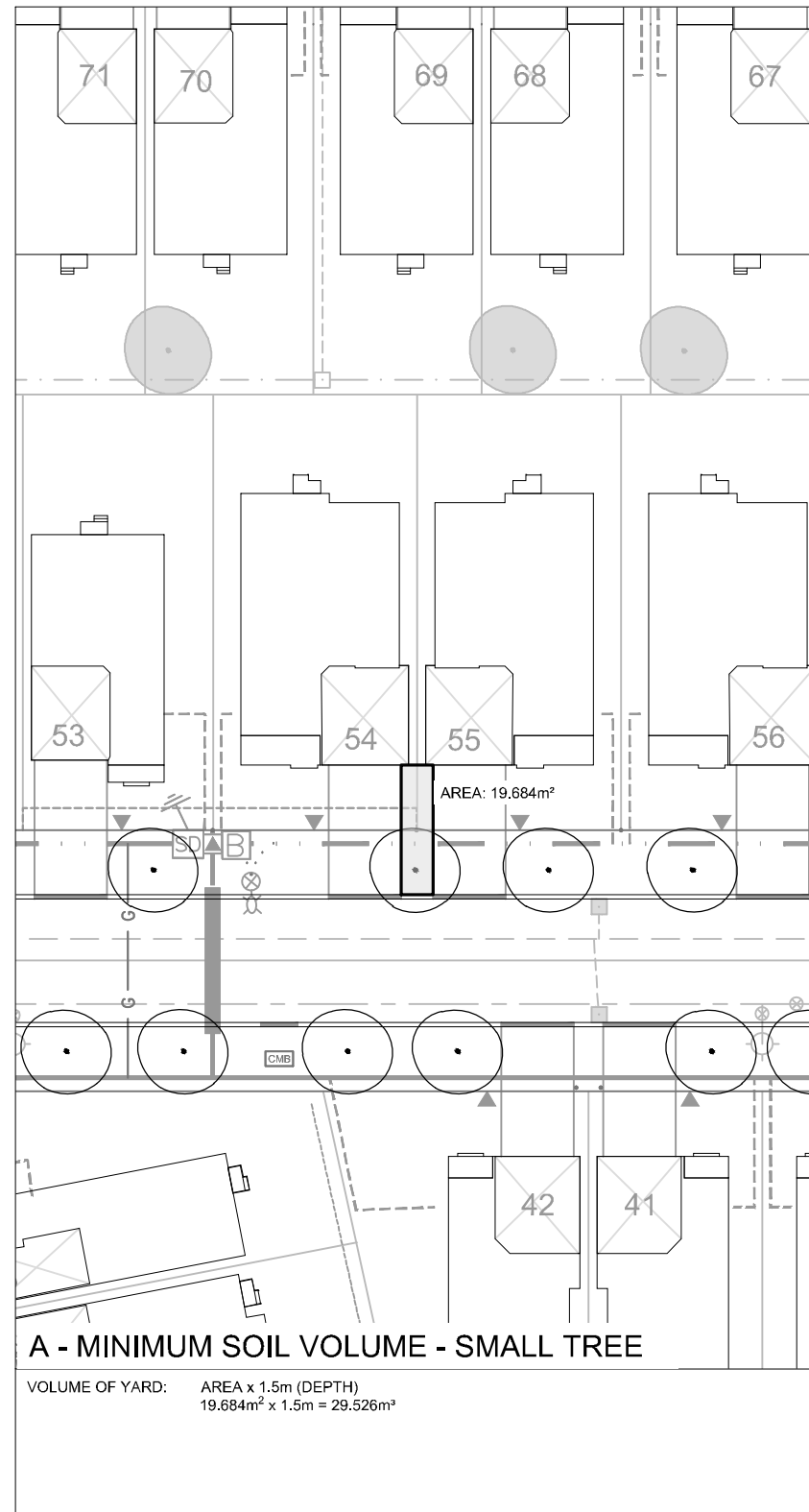
NOVATECH ENGINEERS, PLANNERS & LANDSCAPE ARCHITECTS

117198-L2

LOCATION
CITY OF OTTAWA
VAN GAAL LANDS - CLARIDGE DEVELOPMENT

DRAWING NAME
STREETSCAPE PLAN

PROJECT No. 117198-00
REV 7
DRAWING No. 117198-L2



TREE PLANTING IN SENSITIVE CLAY

1. The landscape plans have been developed in accordance with the Geotechnical Report: Geotechnical Investigation, Proposed Residential Development, Terry Fox Drive at Cope Drive - Ottawa, prepared by Paterson Group, April 2, 2019.
2. The following City of Ottawa clay soils guideline applies: Guidelines for Tree Planting in Sensitive Marine Clay Soils (2017).
3. The soil volumes provided are sufficient for a reasonable chance of tree survival. Unless otherwise noted, all new trees on City property meet the minimum soil volume requirements of the following, based on a depth of 1.5m below finished grade, and subtracting the volume of utility trenches.

- a. Small tree (mature height up to 7.5m) - 25m³/ minimum soil volume provided.
- b. Medium tree (mature height 7.5-14m) - 30m³/ minimum soil volume provided.

Where trees share a continuous soil volume space:

- c. Two (2) small trees - 15m³/ minimum soil volume provided per tree.
- d. Two (2) medium trees - 18m³/ minimum soil volume provided per tree.

<p>Engineers, Planners & Landscape Architects Suite 200, 240 Michael Cowpland Drive Ottawa, Ontario, Canada K2M 1P6</p> <p>Telephone (613) 254-9643 Facsimile (613) 254-5867 Website www.novatech-eng.com</p>	<p>VAN GAAL LANDS - CLARIDGE DEVELOPMENT</p>	
	<p>SOIL VOLUMES</p>	
<p>SCALE 1 : 500</p>		<p>DATE AUG 2024 JOB 117198 FIGURE FIG-VOL</p>