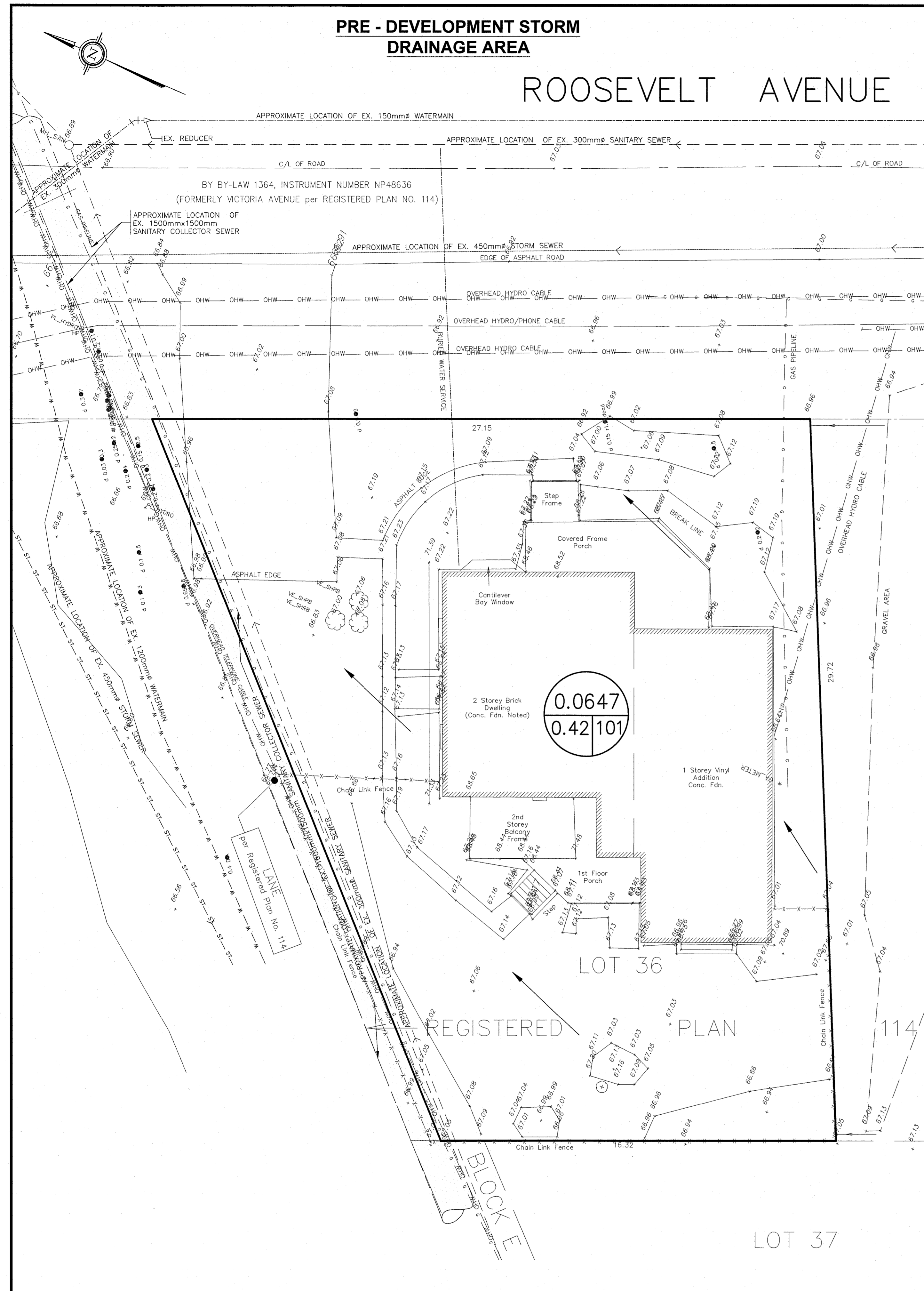


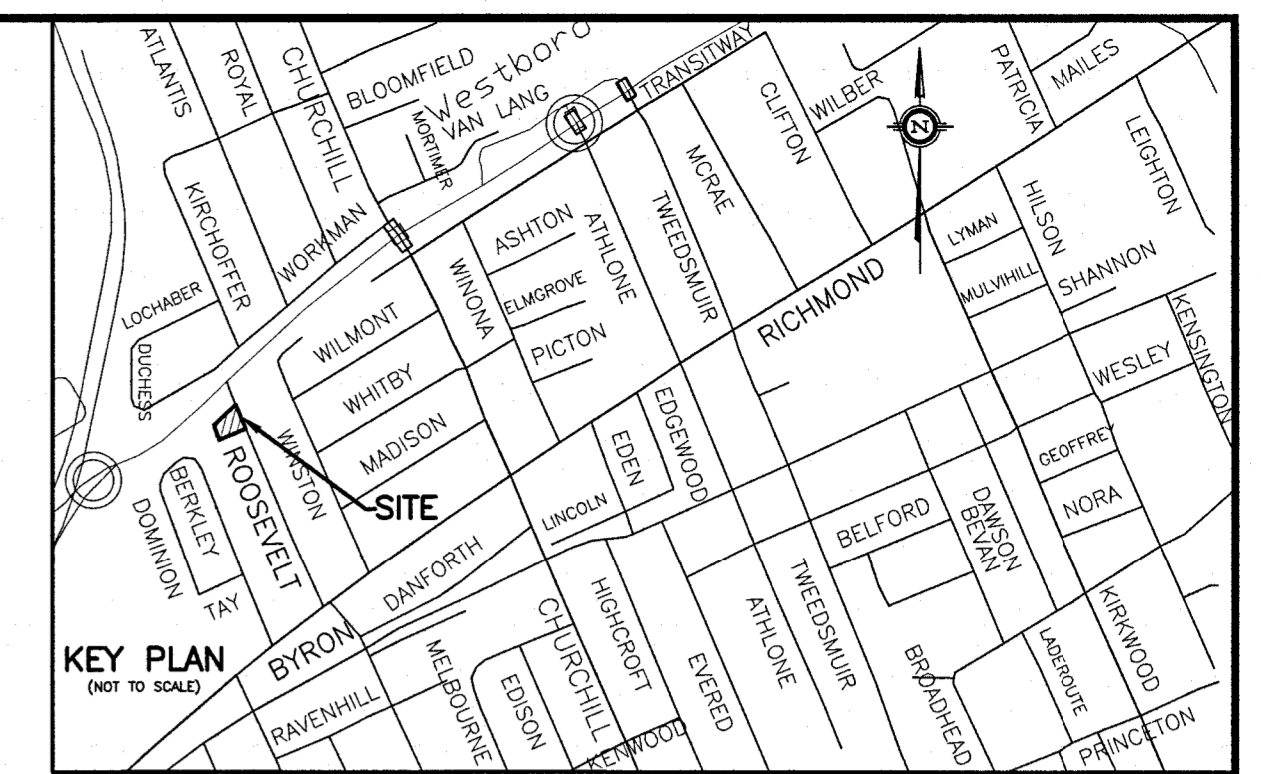
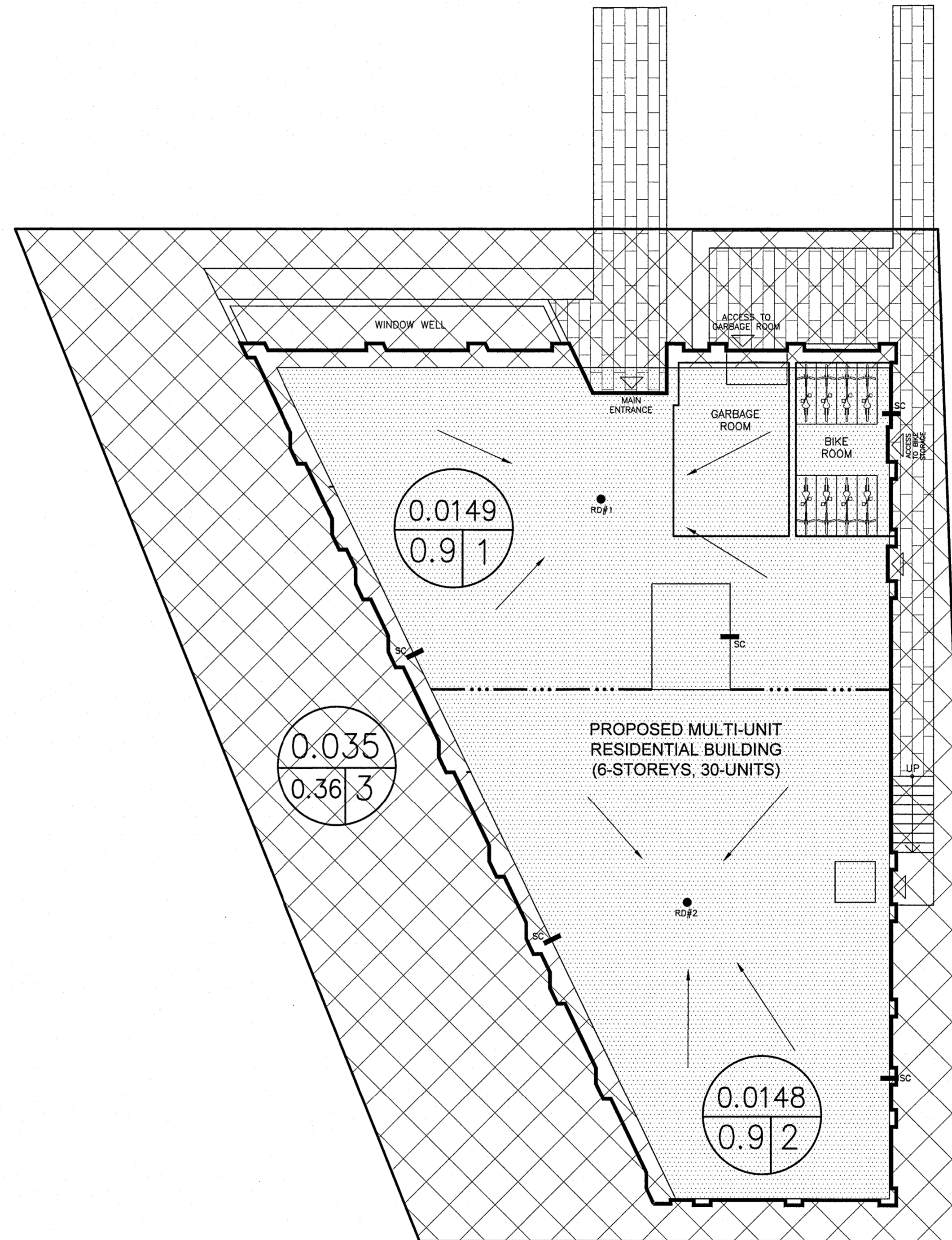
**PRE - DEVELOPMENT STORM DRAINAGE AREA**

**ROOSEVELT AVENUE**



**POST DEVELOPMENT STORM DRAINAGE AREA**

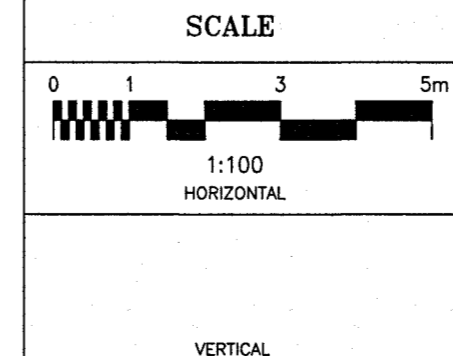
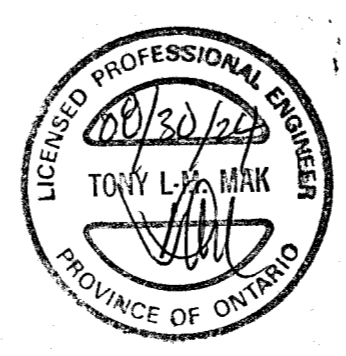
**ROOSEVELT AVENUE**



- LEGEND**
- RD#1 PROPOSED ROOF DRAIN NUMBER AND LOCATION
  - SC PROPOSED ROOF SCUPPER LOCATION
  - PROPOSED HIGH RIDGE LINE
  - 0.03 / 0.91 DRAINAGE AREA IN HECTARES / DRAINAGE NODE NUMBER
  - COEFFICIENT OF RUNOFF
  - ▨ CONTROLLED DRAINAGE AREA
  - ▩ UN-CONTROLLED DRAINAGE AREA

- NOTES**
- NODE #1 AND NODE #2 REPRESENTS BUILDING ROOF AREA (SWM CONTROLLED AREA)
  - NODE #3 REPRESENTS UNCONTROLLED DRAINAGE AREA
  - NODE #101 REPRESENTS PRE-DEVELOPMENT DATA.

NO.	REVISION	DATE	BY



DESIGN	T.L.M.
CHECKED	T.L.M.
DRAWN BY	P.M.
CHECKED	T.L.M.
APPROVED	T.L.M.

PROJECT  
**342 ROOSEVELT AVENUE**  
**LOT 36**  
**REGISTERED PLAN 114**  
**CITY OF OTTAWA**

DRAWING TITLE  
**STORM DRAINAGE AREA PLAN**

<p><b>T.L. MAK ENGINEERING CONSULTANTS LTD.</b> CONSULTING ENGINEERS</p>		PROJECT No.	DATE	DRAWING No.
		823-83	AUGUST 2024	D-1