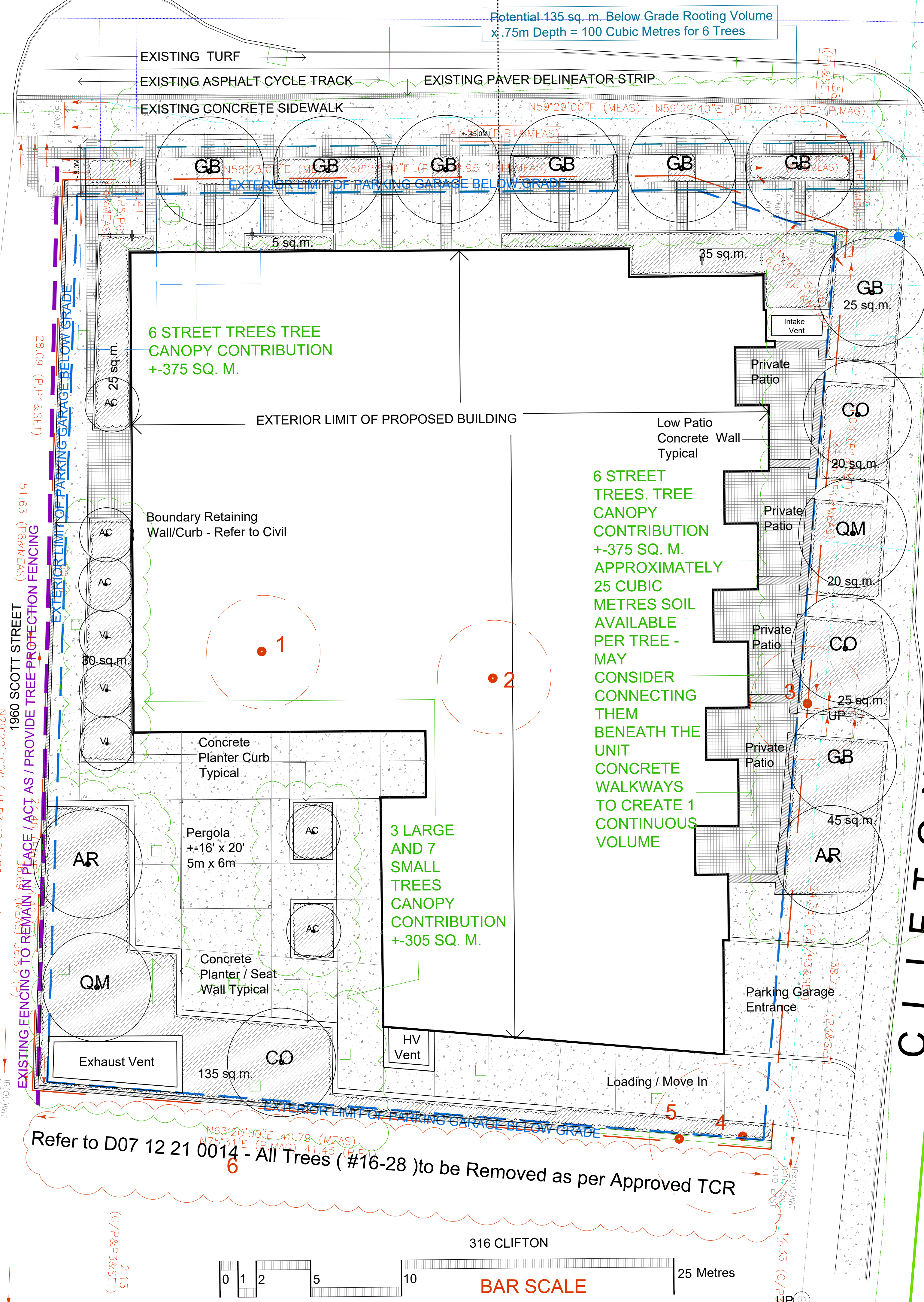


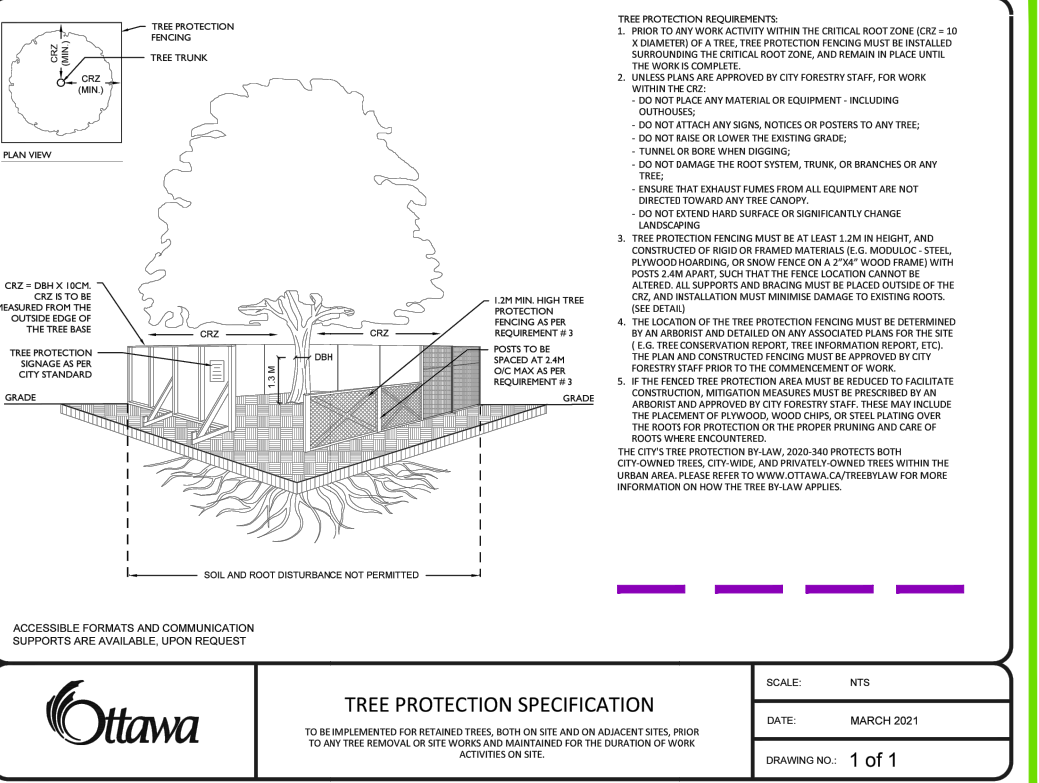
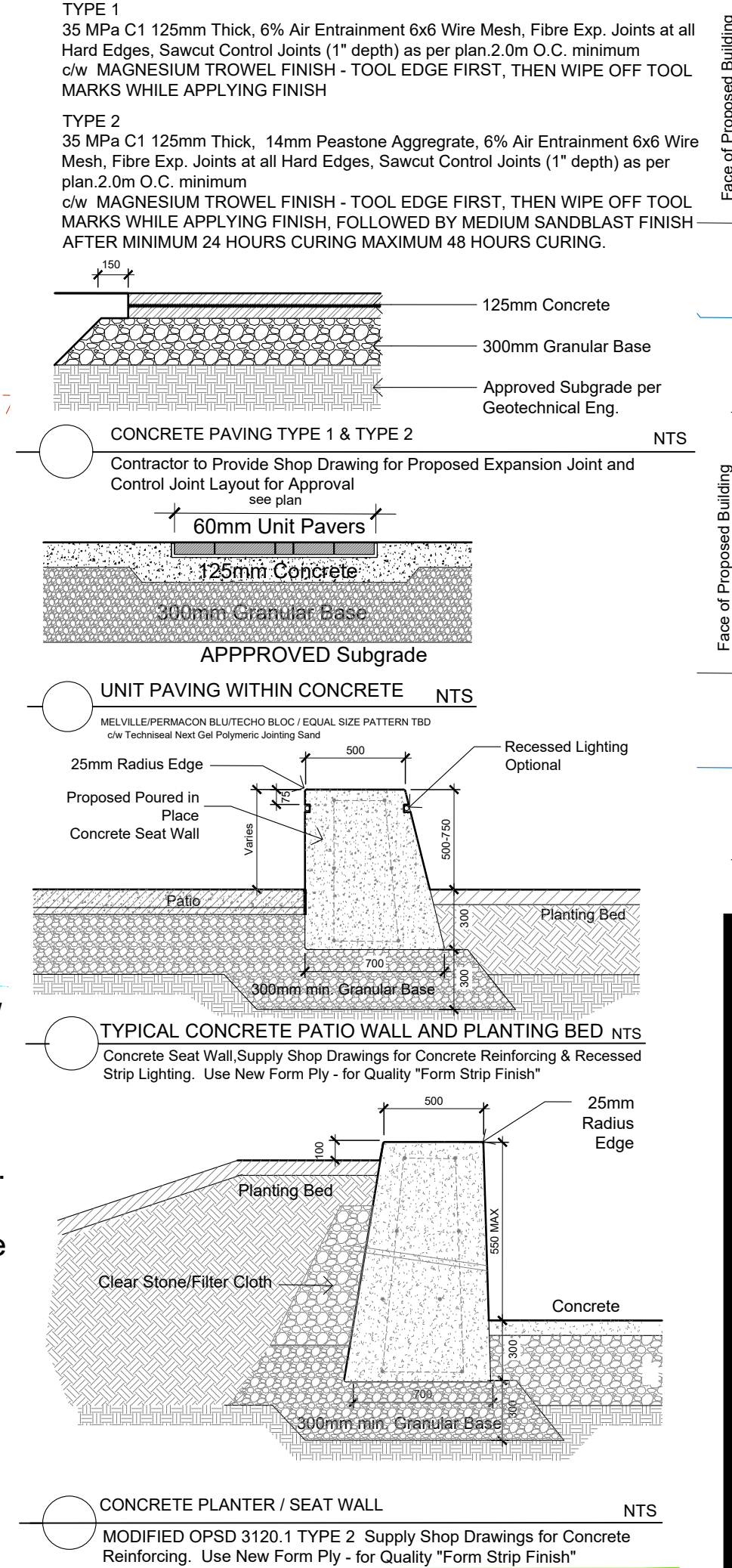
# SCOTT STREET



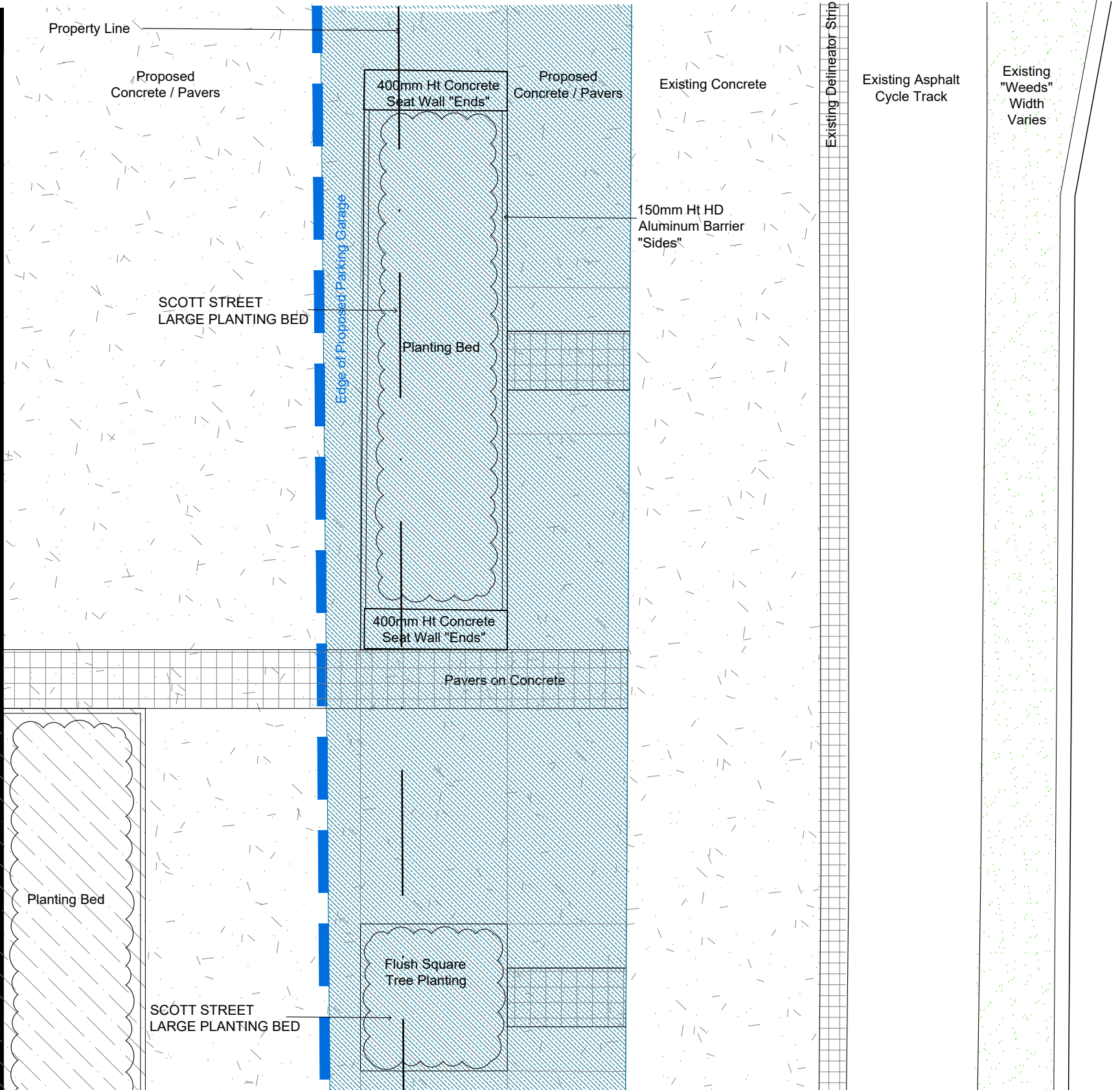
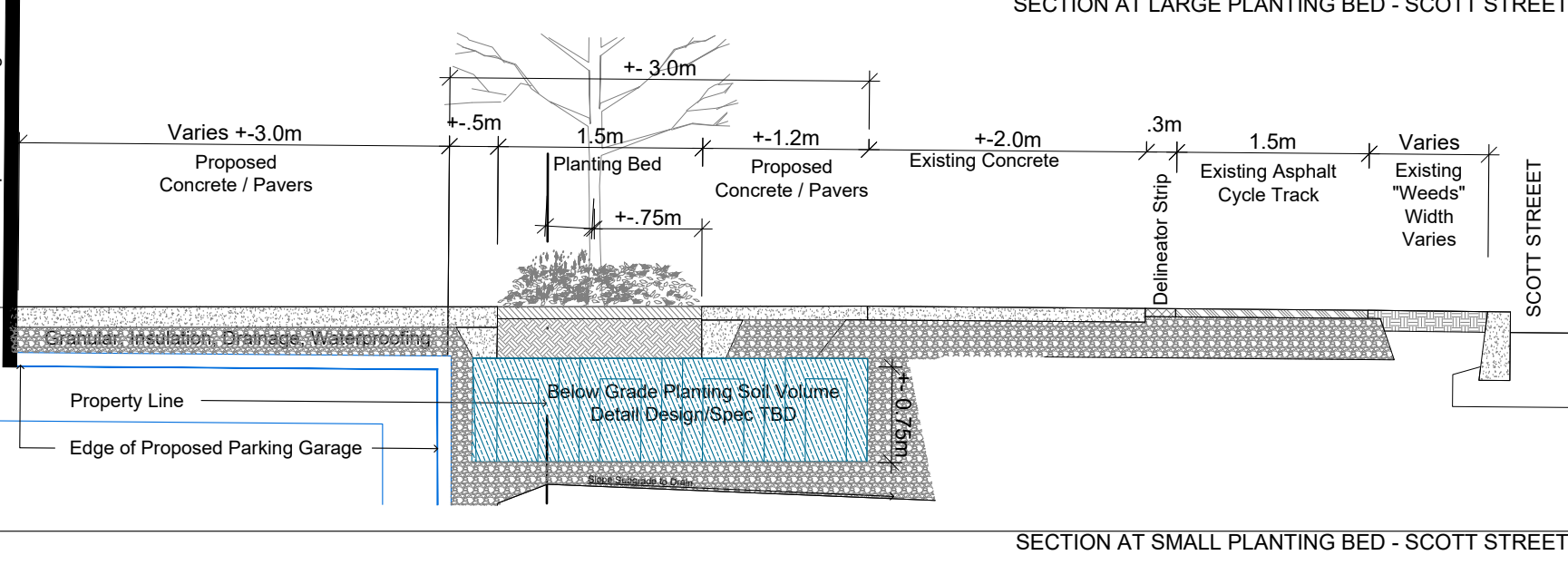
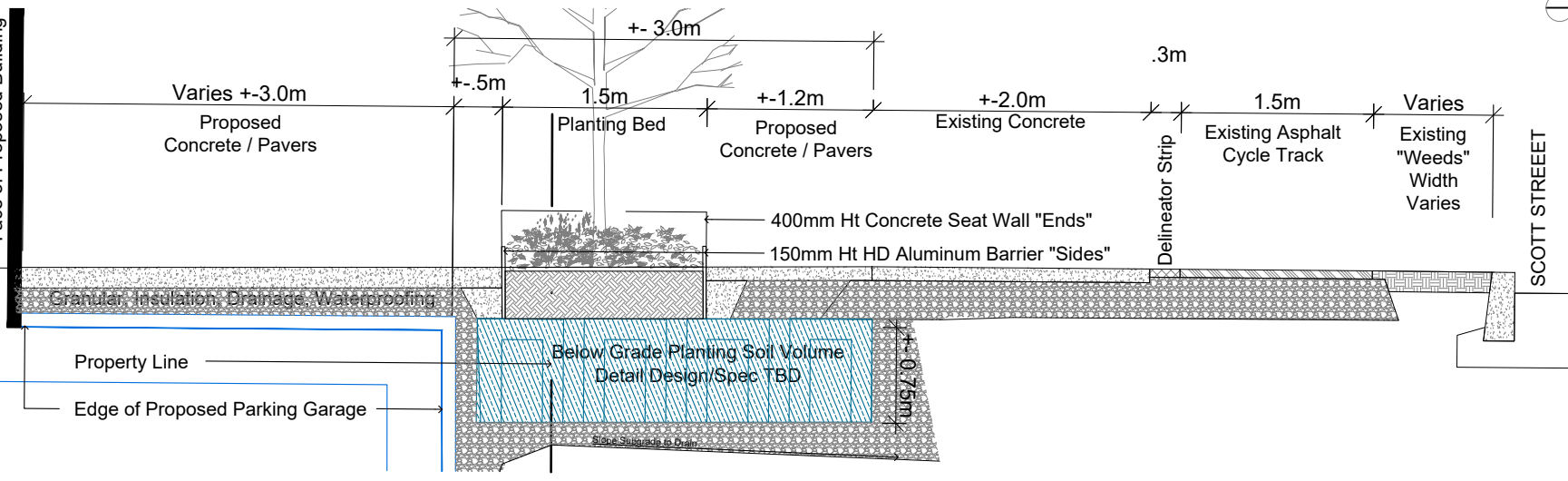
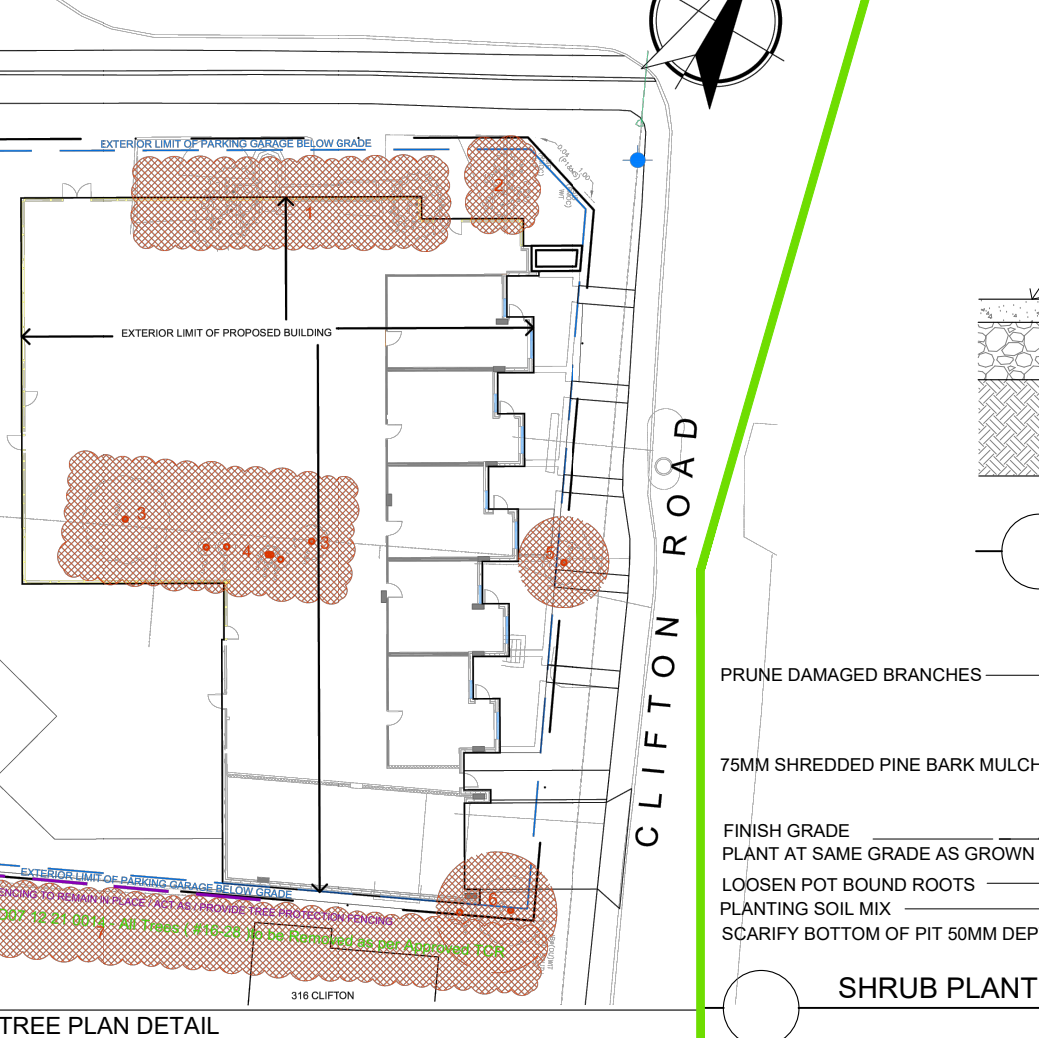
Utility Pole / Overhead Wires Crossing Scott Street To Remain

Utility Poles / Overhead Wires to be Removed along Clifton. New Hydro Service to be buried - Location TBD

# CLIFTON ROAD

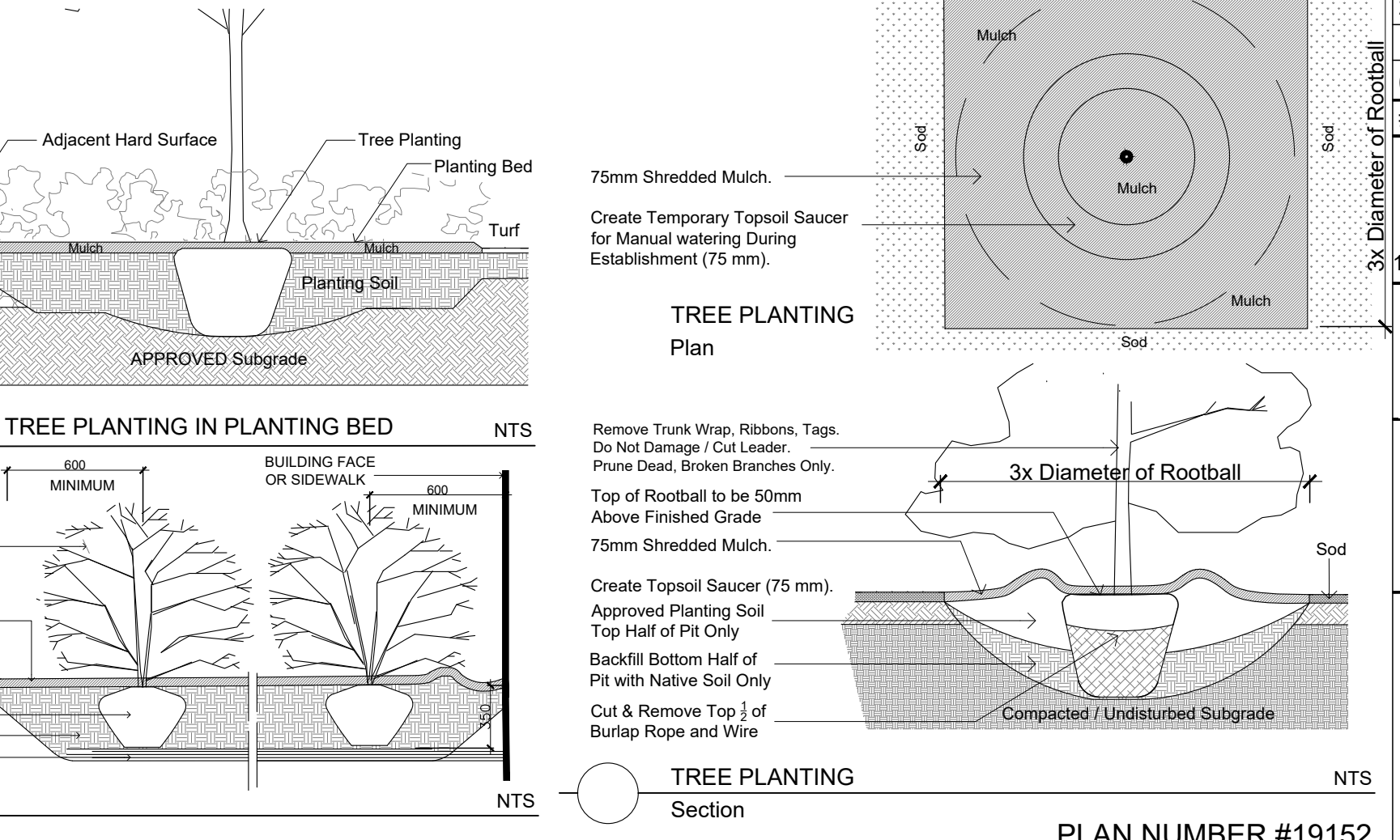


NO.	VARIETY	COMMON NAME	DESCRIPTION	OWNER	CONDITION	REMARKS	OTHER REMARKS
1	Thuja occidentalis	White Cedar	Multiple Clumps 0-15cm	Private	Good	REMOVE	
2	Juniperus virginiana	Eastern Red Cedar	Multiple 0-15cm	Private	EXCELLENT	REMOVE	
3	Acer negundo	Manitoba Maple	2 Trees - 120cm and 90cm	Private	POOR	REMOVE	
4	Acer saccharum	Sugar Maple	5 Trees @ 30cm each	Private	Good	REMOVE	
5	Acer saccharum	Sugar Maple	60cm Heavily Hydro Pruned	Private	POOR	REMOVE	
6	Refer to TCR D07 12 21 0014	Refer to TCR D07 12 21 0014	2 Trees - 90cm and 30cm	Private	D07 12 21 0014	Refer to TCR D07 12 21 0014	Refer to TCR D07 12 21 0014
7	Refer to TCR D07 12 21 0014	Refer to TCR D07 12 21 0014	Neighbours	D07 12 21 0014	D07 12 21 0014	Refer to TCR D07 12 21 0014	Refer to TCR D07 12 21 0014



CODE	QUANTITY	BOTANICAL NAME	COMMON NAME	I&B SPECIMEN	SPREAD	NATIVE
AC	5	0	Amelanchier canadensis	Tree Serviceberry	50mm cal	5M NATIVE
AR	1	1	Acer rubrum	Red Maple	60mm cal	12M NATIVE
CO	1	2	Celtis occidentalis	Common Hackberry	60mm cal	18M NATIVE
GB	0	8	Ginkgo biloba	Maidenhair Tree	60mm cal	12M NATIVE
QM	1	1	Quercus macrocarpa	Bur Oak	60mm cal	20M NATIVE
VL	3	0	Viburnum lentago	Nannyberry	50mm cal	3M NATIVE
<b>TOTALS</b>	<b>11</b>	<b>12</b>				

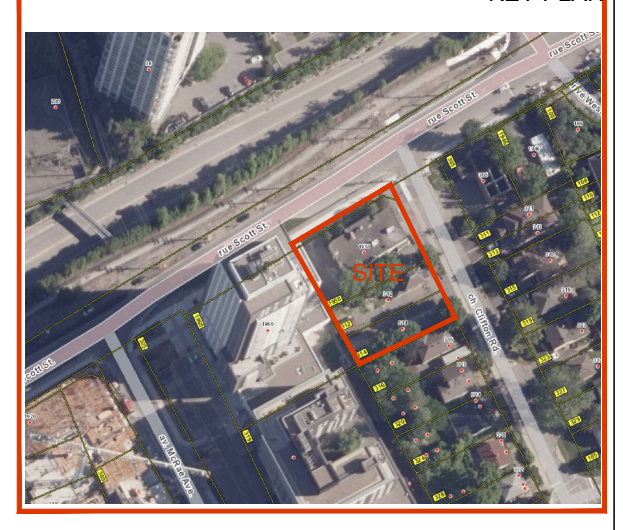
Code	Qty.	Botanical Name	Common Name	Size	Condition	NATIVE
HK	225	Hypericum kalmianum	Kalm St. John's Wort	30cm	Pot	NATIVE
HP	175	Hypericum prolificum	Shrubby St. John's Wort	40cm	Pot	NATIVE
RP	75	Rosa palustris	Swamp Rose	50cm	Pot	NATIVE
SA	150	Spiraea alba	Meadowsweet	60cm	Pot	NATIVE



Drawing Remains the Property of Copyright Reserved by GJA INC. Do Not Use or Reproduce Without Approval of Gino J. Aiello. | PLANTING MIX TO BE APPROVED BY LANDSCAPE ARCHITECT | PLANT MATERIAL TO MEET CNLA STANDARDS/BE APPROVED BY LANDSCAPE ARCHITECT PRIOR TO PLANTING ALL MATERIALS & WORK TO BE MAINTAINED UNTIL FINAL ACCEPTANCE. INCLUDE 1 YEAR WARRANTY FROM DATE OF FINAL ACCEPTANCE | REFER TO CIVIL ENGINEER'S DRAWING FOR ELEVATIONS / GRADING | The Landscape Plan is to be read in conjunction with the grading, servicing, site and survey plan. All trees to be preserved on or directly adjacent to the site will be protected | Plant material size to be installed a minimum of 3.0m away from any part of any hydro transformer, 3.0m corridor between a fire hydrant and the curb, a 2.5m radius beside or behind a fire hydrant, 2.0m from any servicing/utility line or structure |



**HAUSER**  
LIFE FURNITURE



- LEGEND**
- LANDSCAPE REMOVALS
  - Existing Tree to Remove
  - LANDSCAPE PROPOSED
  - Deciduous Tree
  - Scott Street Small Planting Bed
  - Scott Street Large Planting Bed
  - Typical Planting Bed
  - Concrete
  - Precast Pavers
  - Concrete Seat Wall Anchor to Concrete
  - SITE / ARCHITECTURE
  - Parking Garage Below
  - Fire Hydrant
  - FD Siamese Connection
  - Light Standard
  - Hydro/Utility Pole
  - BELOW GRADE SERVICES REFER TO CIVIL/CUP
  - WTR - U/G Water Service
  - STM - U/G Storm Service
  - SAN - U/G Sanitary Service
  - GAS - U/G Gas Service
  - BC - U/G Bio Cell Service
  - H - U/G Hydro Service
  - C - U/G Cable Service

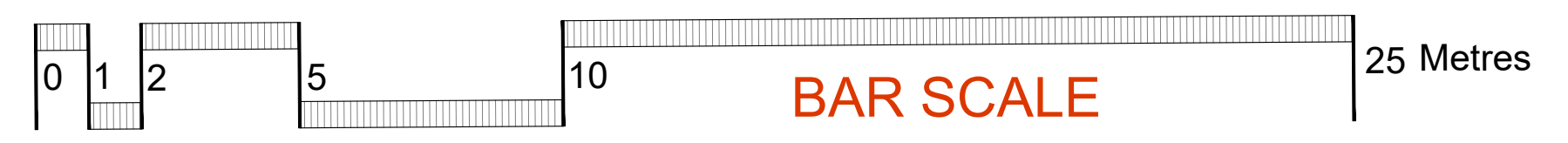
NO.	REVISION/COORDINATION	DATE
3	per City Comments	2024 11 01
2	ZBLA	2024 09 24
1	SPC SUBMISSION 1	2024 07 31
0	REVIEW/COORDINATION	2024 06 00
#	Revision	Date

**Granite Private Equity Limited Partnership**  
16 Concourse Gate, Suite 200 Ottawa, ON K2E 7S8

**GJA INC.**  
GINO J. AIELLO | LANDSCAPE ARCHITECT  
GJAL.COM | 613 286 5130 | GINO@GJAL.COM  
100 BAYVIEW ROAD UNIT #11, SCARBOROUGH, ONT. M1B 2Y2

**MULTI UNIT RESIDENTIAL DEVELOPMENT**  
1950 SCOTT STREET

**Landscape Plan / TCR**  
Scale: 1:125



D02 02 24 0054