

PLAN 4R-36449

Received and deposited

October 21st, 2024

Nirosha Nagenthirarajah

Representative for the Land Registrar for the Land Titles Division of Ottawa-carleton (No.4)

SCHEDULE

PART	LOT	CONCESSION	PIN
1	PART OF 7	7	PART OF 04551-0063

PART I

PLAN OF SURVEY OF PART OF LOT 7 CONCESSION 7 GEOGRAPHIC TOWNSHIP OF FITZROY CITY OF OTTAWA MONUMENT-URSO SURVEYING LTD.

SCALE 1 : 500

The intended plot size of the plan is 457 mm in width by 1067 mm in height when plotted at a scale of 1:500.

METRIC DISTANCES AND COORDINATES SHOWN ON THIS PLAN ARE IN METRES AND CAN BE CONVERTED TO FEET BY DIVIDING BY 0.3048.

SURVEYOR'S CERTIFICATE

- I CERTIFY THAT:
- THIS SURVEY AND PLAN ARE CORRECT AND IN ACCORDANCE WITH THE SURVEYS ACT AND THE SURVEYORS ACT, THE LAND TITLES ACT AND THE REGULATIONS MADE UNDER THEM.
 - THE SURVEY WAS COMPLETED ON SEPTEMBER 17TH, 2024.

October 18th 2024 DATE

COEL STOREY ONTARIO LAND SURVEYOR

This plan of survey relates to AOLS Plan Submission Form Number V-91227

LEGEND

SYMBOL	DENOTES	FOUND SURVEY MONUMENT
■	PLANTED SURVEY MONUMENT	
□	IRON BAR	
IB	STANDARD IRON BAR	
SIB	SHORT STANDARD IRON BAR	
SSIB	PLASTIC BAR	
PB	ROUND IRON BAR	
IBØ	WITNESS	
(WIT)	ACCEPTED	
ACC.	MEASURED	
MEAS.	MONUMENT-URSO SURVEYING LTD.	
(L476)	PLAN 4R-14339	
(P1)	PLAN SR-1293	
(P2)	MTO ASSUMPTION PLAN P-1666-24 INST. FY134064	
(P3)		

BEARING NOTES

BEARINGS ARE MTM GRID, DERIVED FROM CAN-NET REAL-TIME NETWORK GPS OBSERVATIONS ON OBSERVED REFERENCE POINTS A AND B HAVING A BEARING OF AND ARE REFERRED TO THE CENTRAL MERIDIAN (76°30' WEST LONGITUDE) OF MTM ZONE 9 NAD83 (CSRS) (2010.0).

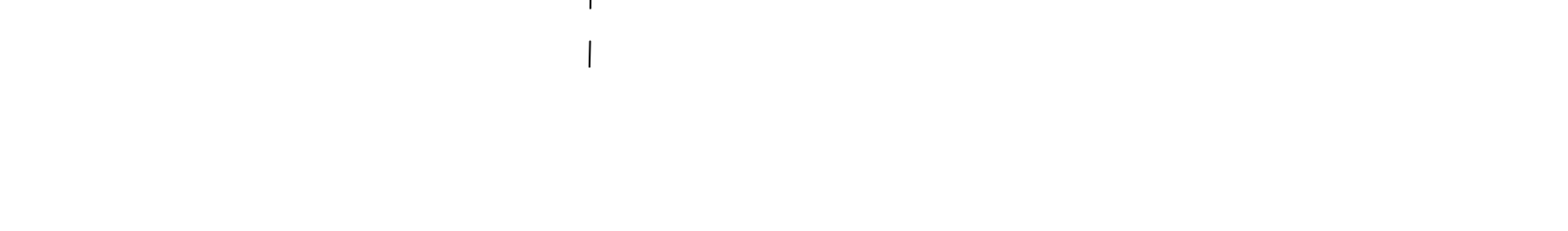
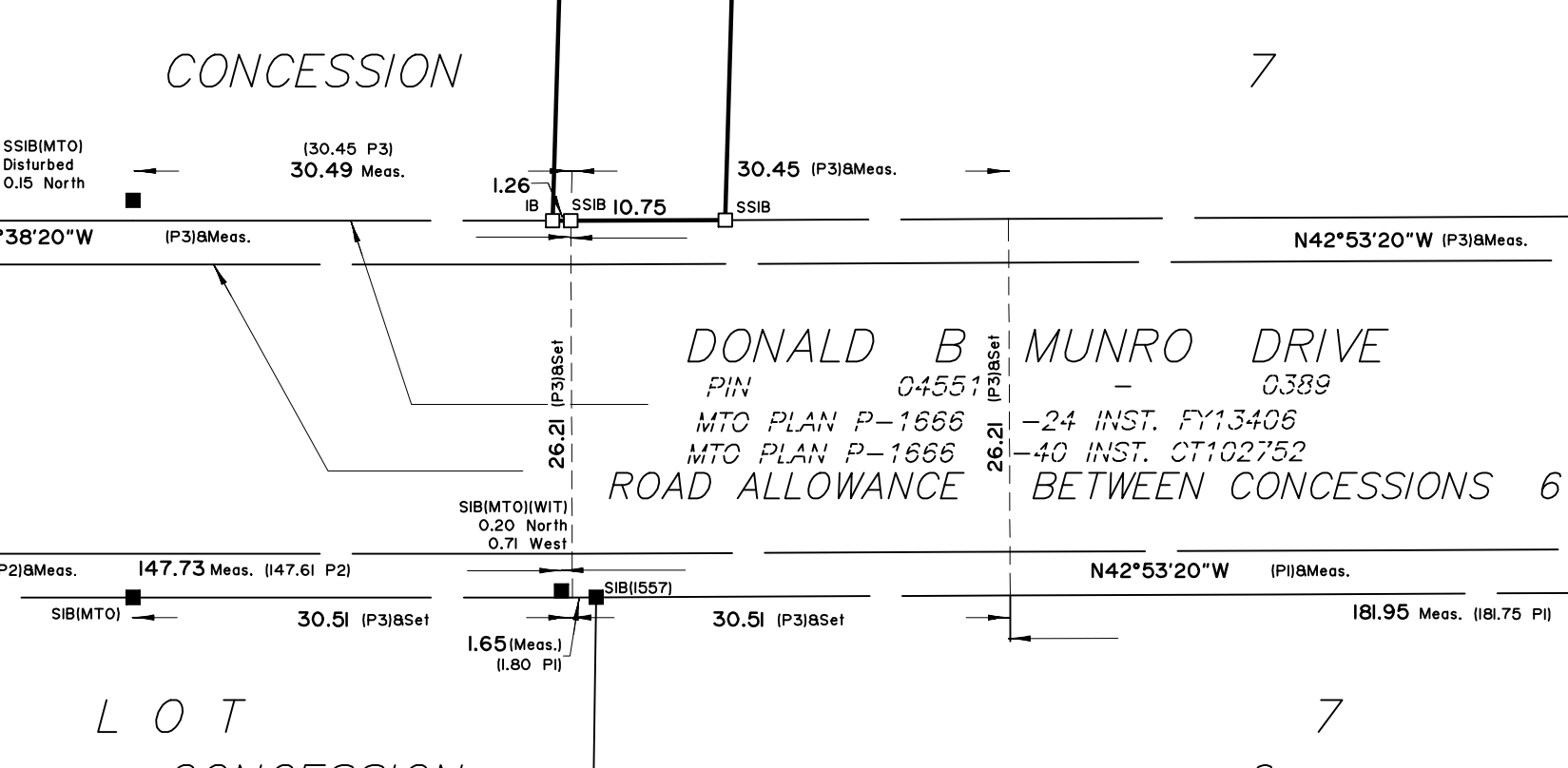
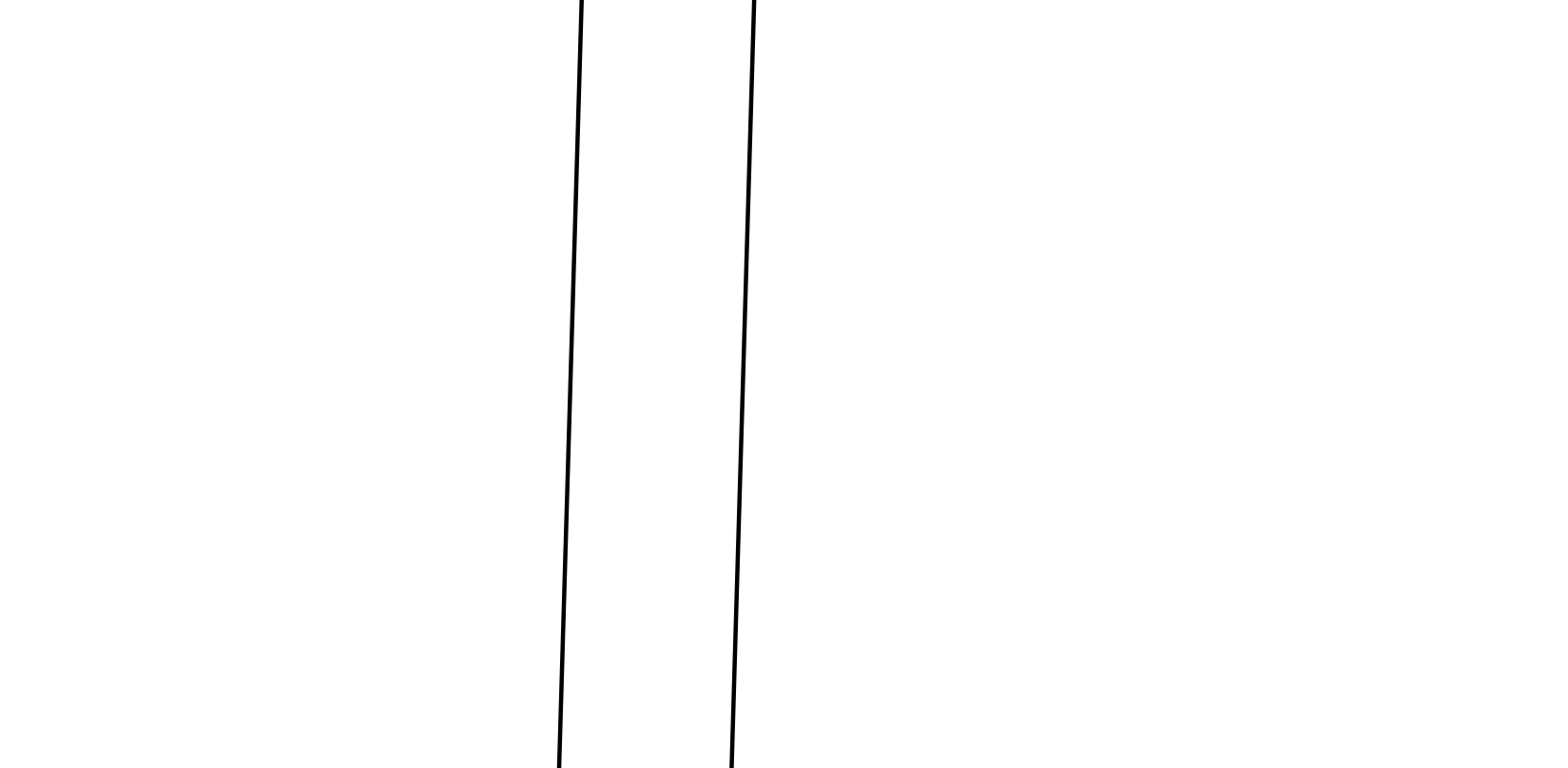
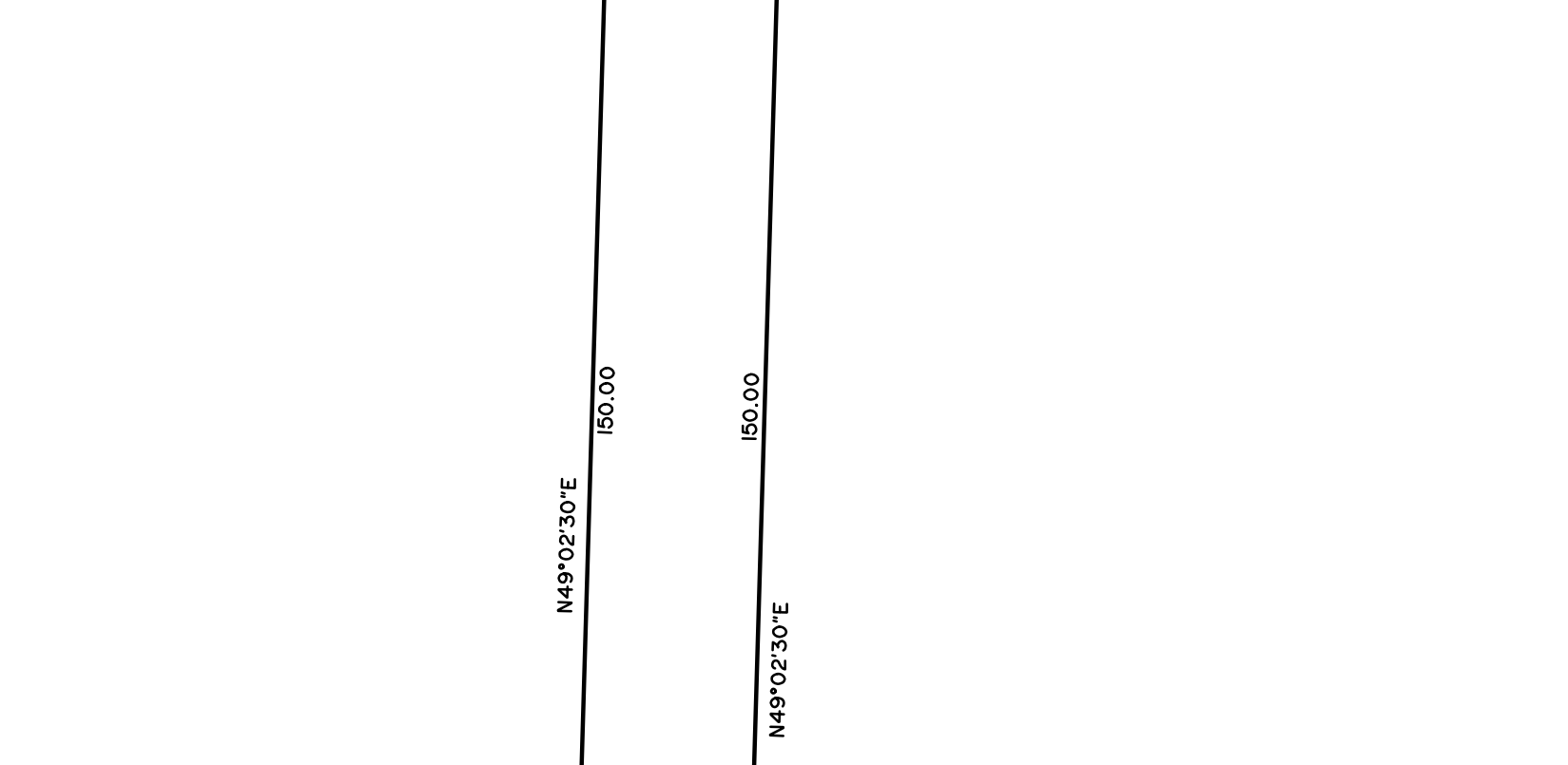
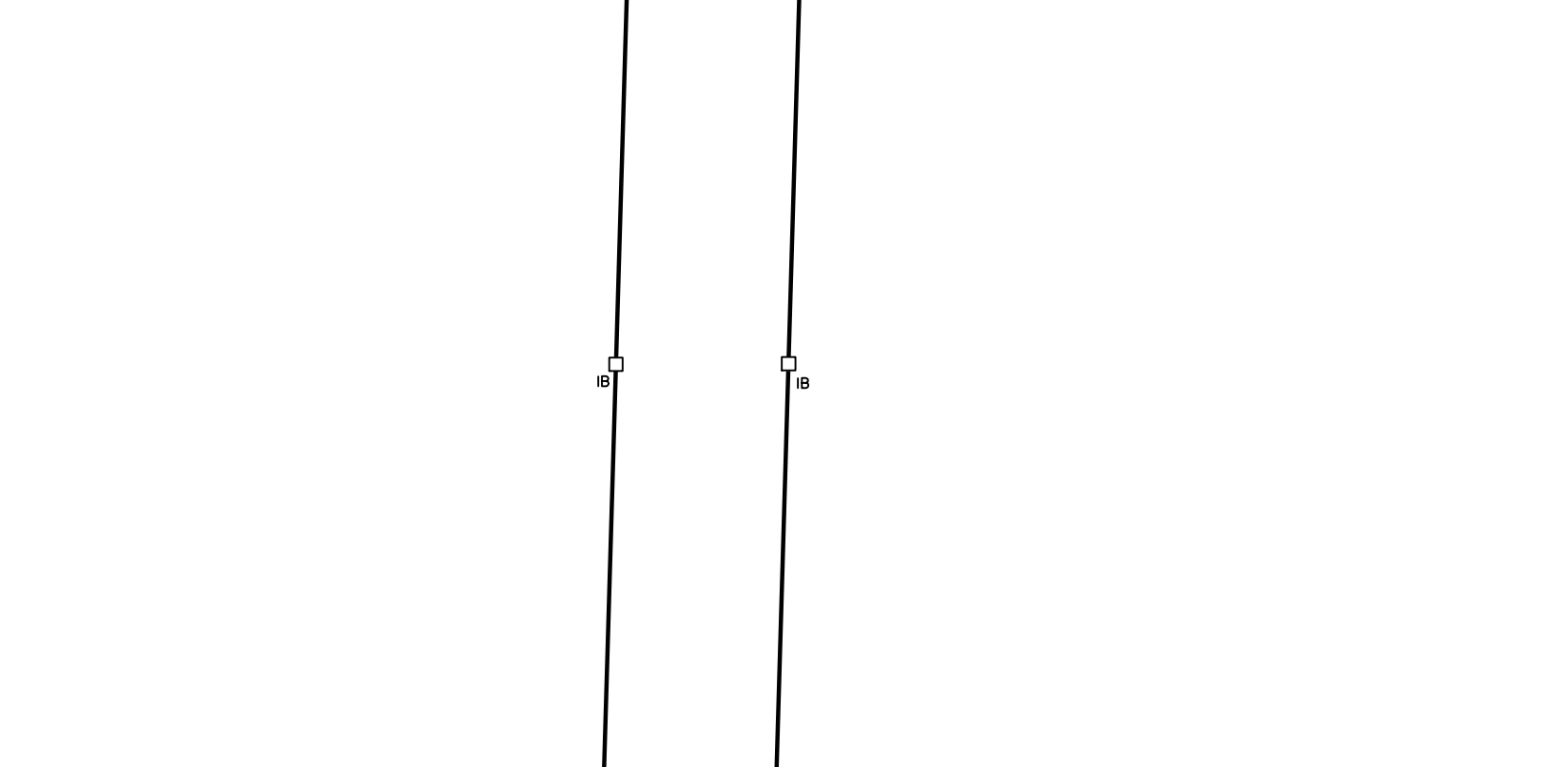
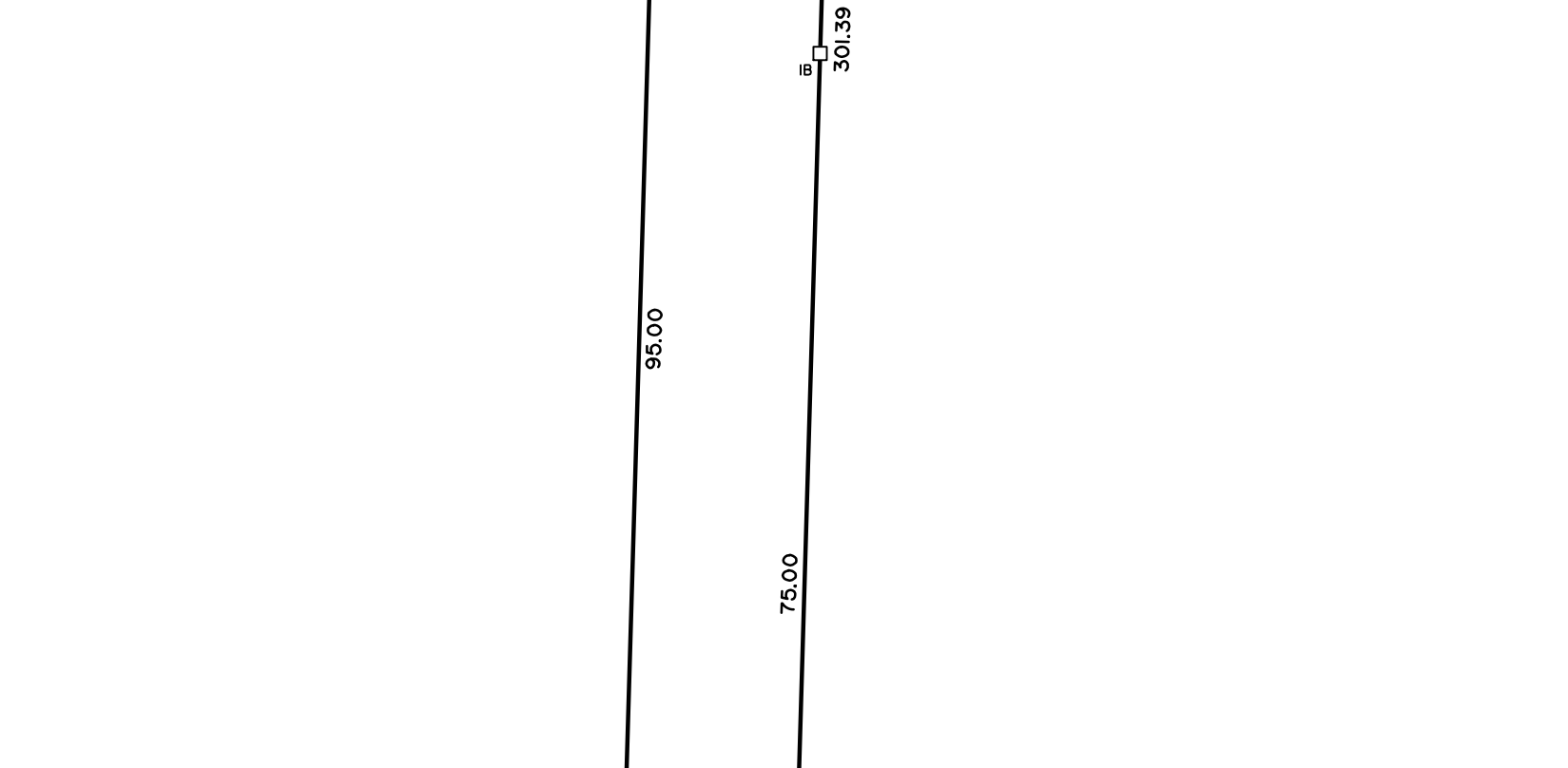
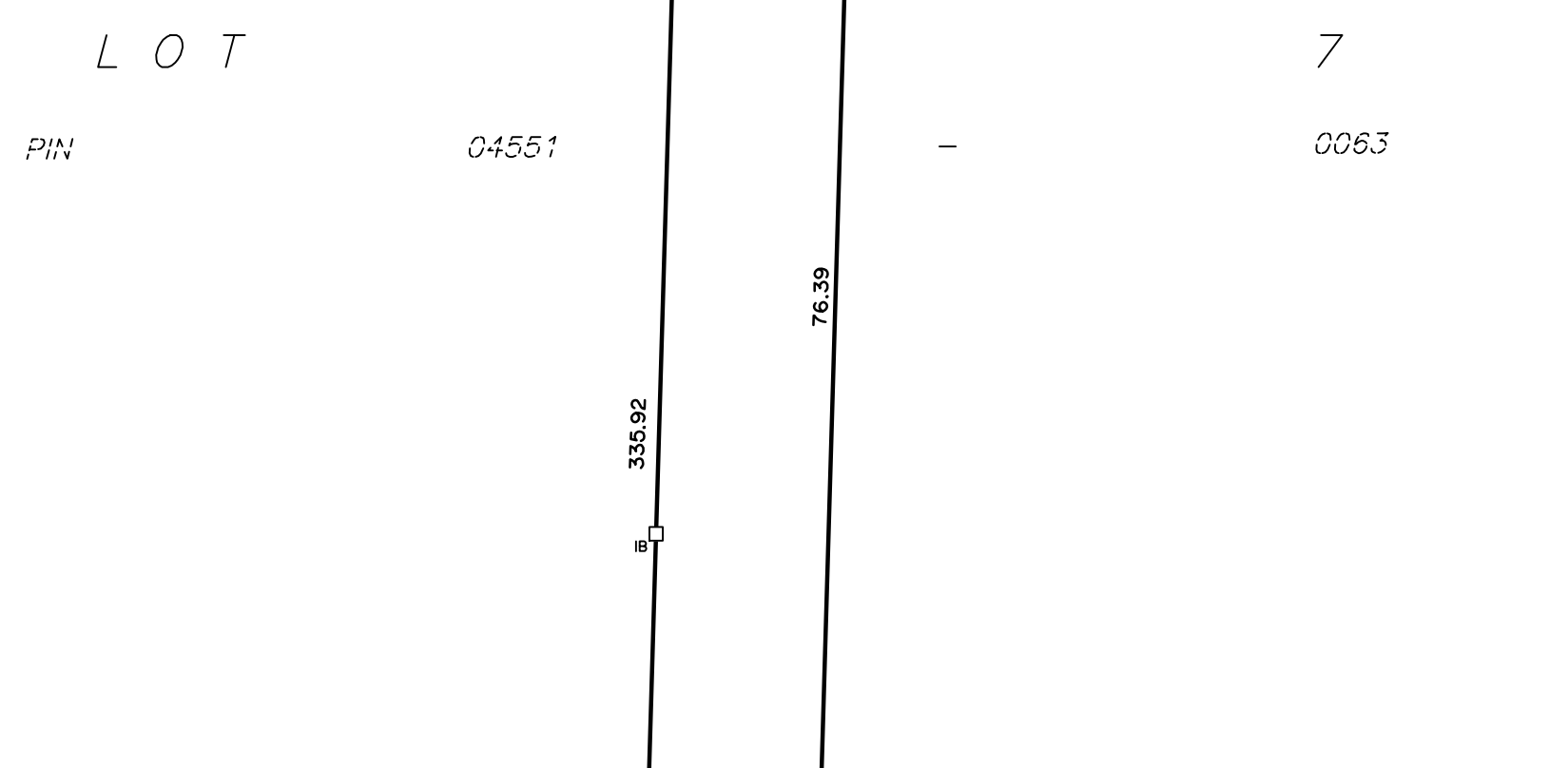
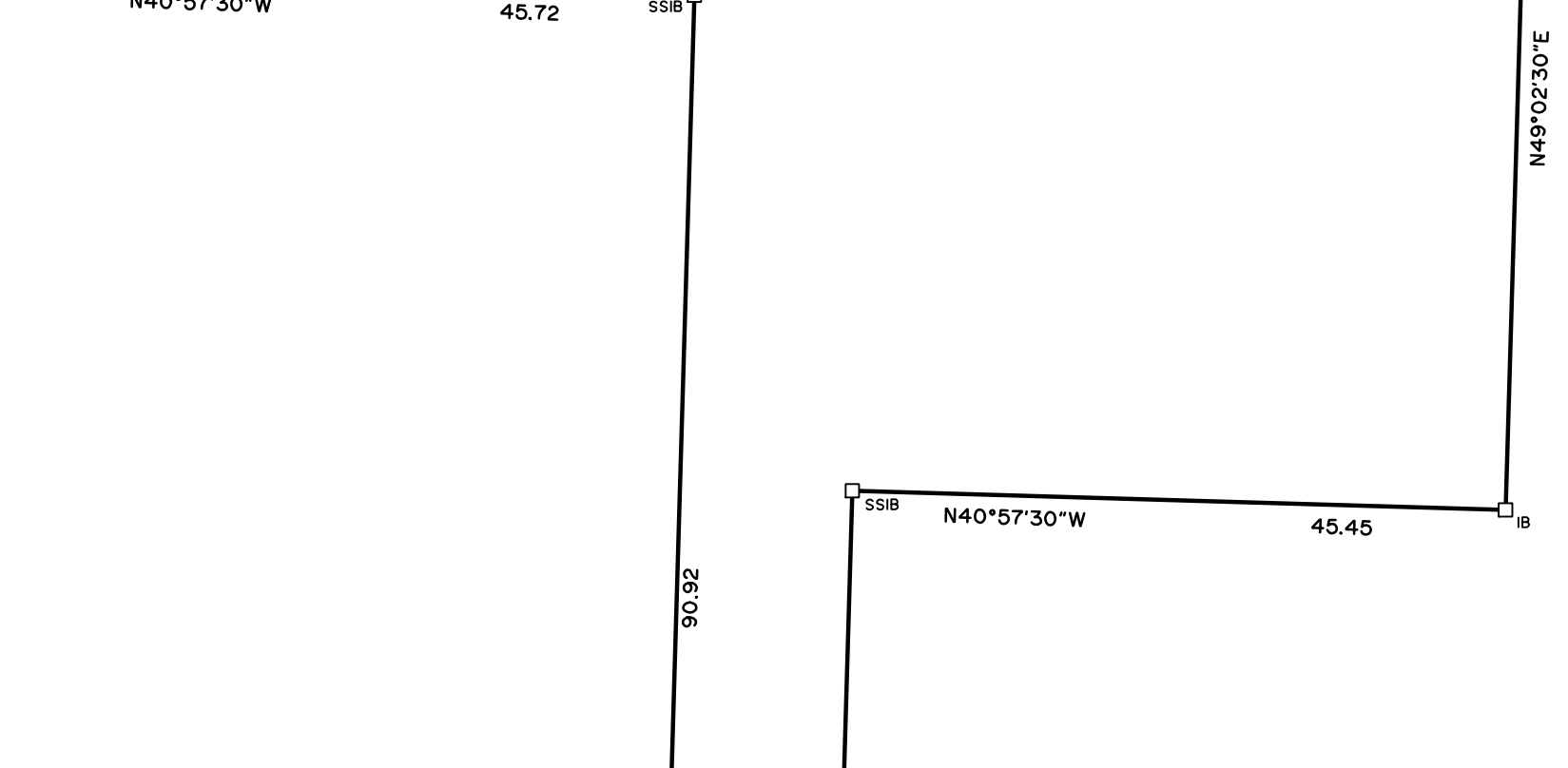
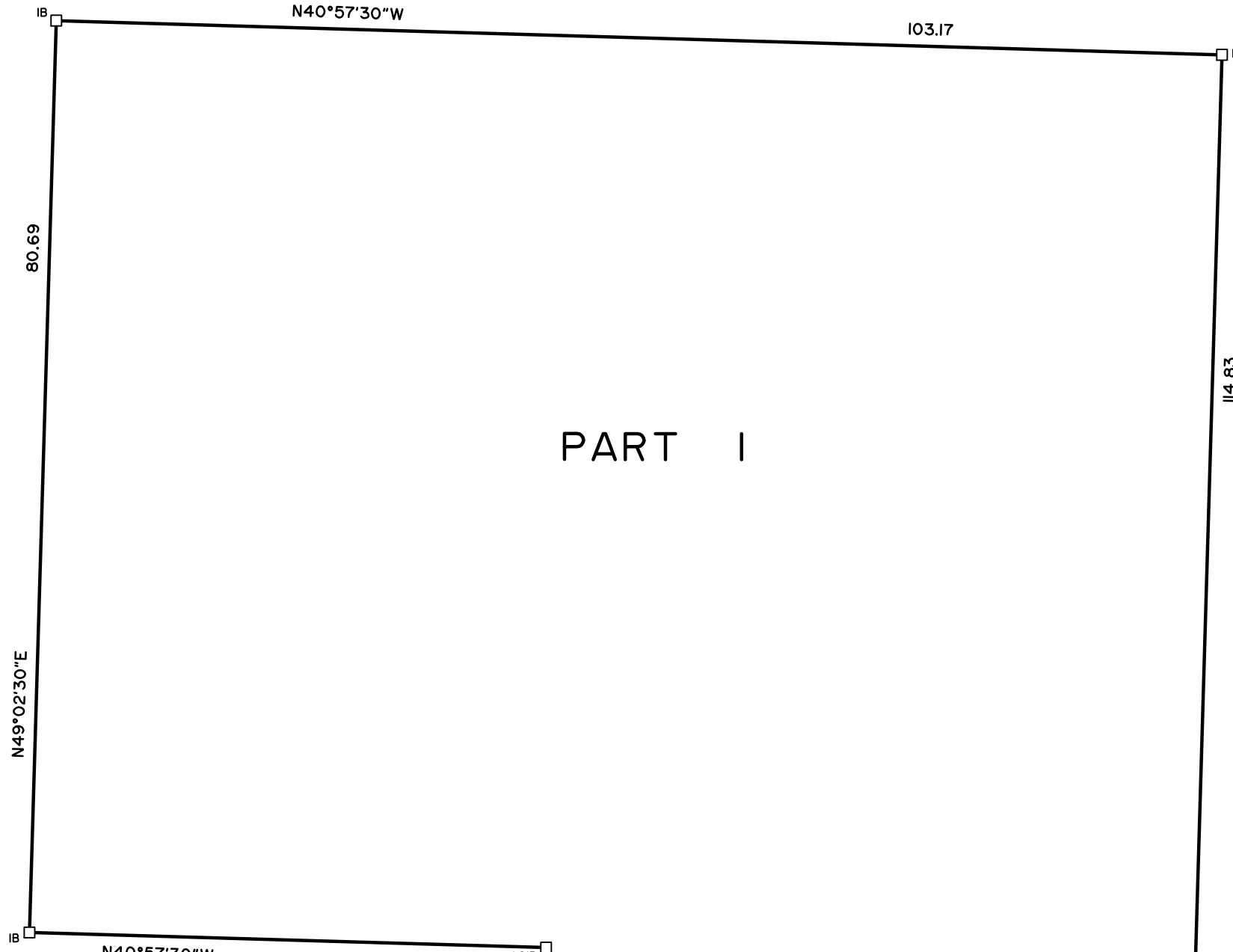
DISTANCES ON THIS PLAN ARE HORIZONTAL GROUND DISTANCES AND CAN BE CONVERTED TO GRID DISTANCES BY MULTIPLYING BY THE AVERAGE COMBINED SCALE FACTOR OF 0.99969.

FOR BEARING COMPARISONS A ROTATION OF 0°14'50" COUNTER-CLOCKWISE WAS APPLIED TO PLANS P1 TO P3 TO CONVERT TO GRID BEARINGS.

CO-ORDINATE NOTES

CO-ORDINATES ARE DERIVED FROM CAN-NET REAL-TIME NETWORK GPS OBSERVATIONS, MTM ZONE 9 NAD83(CSRS)(2010.0). COORDINATES ARE TO URBAN ACCURACY PER SECTION 14(2) OF O.REG 216/10. COORDINATES CANNOT, IN THEMSELVES, BE USED TO RE-ESTABLISH CORNERS OR BOUNDARIES SHOWN ON THIS PLAN.

POINT ID	NORTHING	EASTING
A	5026546.62	330527.58
B	5026200.78	330847.96



CONCESSION

7

DONALD B MUNRO DRIVE ROAD ALLOWANCE BETWEEN CONCESSIONS 6 & 7

LOT CONCESSION

6

PART 1 PLAN 5R-1293

PART 1 PLAN 4R-14339

PART 2 PLAN 4R-14339



Monument-Urso Surveying Ltd. Ontario Land Surveyors | Canada Land Surveyors 1755 WOODWARD DRIVE - SUITE 300 OTTAWA ON K2C 0P9

DRAWN: CS/DG FIELD: AC/ES FILE No: 24-0058 Donald B Munro RP D2 PROCESSED: CS CHECKED: CS