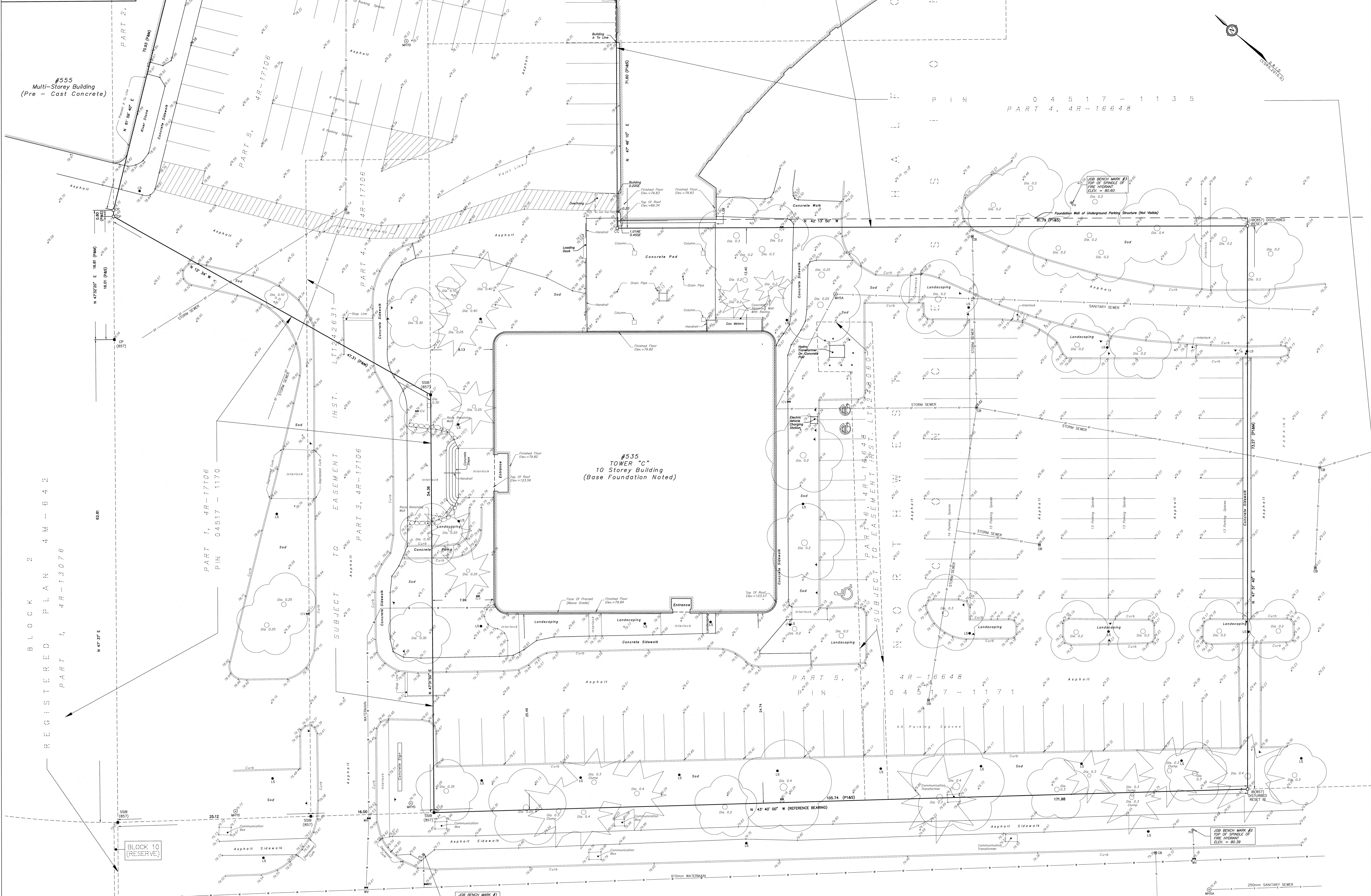


METRIC DISTANCES AND ELEVATIONS SHOWN ON THIS PLAN ARE IN METRES AND CAN BE CONVERTED TO FEET BY DIVIDING BY 0.3048



SURVEYOR'S REAL PROPERTY REPORT - PART 1
TOPOGRAPHIC PLAN OF SURVEY OF
PART OF LOT 8
CONCESSION 4
GEOGRAPHIC TOWNSHIP OF MARCH
CITY OF OTTAWA
SCALE 1 : 150
FAIRHALL, MOFFATT & WOOLAND LIMITED
ONTARIO LAND SURVEYORS

ELEVATION NOTES
1. ELEVATIONS SHOWN HEREON ARE REFERRED TO GEODETIC DATUM (CGVD28).
2. ELEVATIONS FOR MANHOLE COVERS AND CATCH BASINS HAVE TO BE INDEPENDENTLY CONFIRMED BEFORE THEY CAN BE ACCEPTED FOR FINAL DESIGN OR CONSTRUCTION PURPOSES.
3. IT IS THE RESPONSIBILITY OF THE USER OF THIS INFORMATION TO VERIFY THAT THE JOB BENCHMARKS HAVE NOT BEEN ALTERED OR DISTURBED AND THAT THEIR RELATIVE ELEVATION AND DESCRIPTION AGREE WITH THE INFORMATION SHOWN ON THIS DRAWING.

NOTE
1. BEARINGS ARE GRID, DERIVED FROM THE EASTERLY LIMIT OF LEGGET DRIVE AS SHOWN ON PLAN 48-16648 HAVING A BEARING OF N 43°00' W AND ARE REFERRED TO THE CENTRAL MERIDIAN, 75°50' LONGITUDE MGN ZONE 9, NAD83 (CSRS,2010.0).
2. DISTANCES ARE GROUND AND CAN BE CONVERTED TO GRID BY MULTIPLYING BY THE CORRECTED SCALE FACTOR 0.9999185.

- LEGEND**
- - SURVEY MONUMENT SET
 - - SURVEY MONUMENT FOUND
 - ▬ - IRON BAR
 - SIB - STANDARD IRON BAR
 - SBS - SHORT STANDARD IRON BAR
 - CC - CUT CROSS
 - CP - CONCRETE PIN
 - (P) - PLAN 48-17106
 - (P1) - PLAN 48-16648
 - (S) - SET
 - (M) - MEASURED
 - (857) - FAIRHALL, MOFFATT & WOOLAND, L.L.S.
 - (WT) - WITNESS
 - DA - DIAMETER
 - (T) - TOP OF ROCK
 - PIN - PROPERTY IDENTIFIER NUMBER
 - CB - CATCH BASIN
 - FH - FIRE HYDRANT
 - B - BOLLARD
 - - CURBING
 - MISA - SANITARY MANHOLE
 - MHST - STORM MANHOLE
 - MHV - HYDRO MANHOLE
 - IVCV - IRRIGATION CONTROL VALVE
 - - CONIFEROUS TREE
 - - DECIDUOUS TREE
 - W - WATER VALVE
 - - SIGN
 - LS - LAMP STANDARD
 - U- - UNDERGROUND HYDRO
 - ST- - STORM SEWER
 - S- - SANITARY SEWER
 - W- - WATERFALL

REGISTERED BLOCK 2
PART 1, 4R-13076
PART 1, 4R-17106
PART 2, 4R-7809

LEGGET DRIVE
PART 2, 4R-7809
(SEE BY-LAW INST. N° L1992959)

SURVEYOR'S REAL PROPERTY REPORT - PART 2
REPORT SUMMARY

DESCRIPTION OF LAND
PART OF LOT 8, CONCESSION 4, GEOGRAPHIC TOWNSHIP OF MARCH, CITY OF OTTAWA, DESIGNATED AS PARTS 1 & 2, 48-16648, PARTS 4, 5 & 9, 48-17106 AS IN ALL OF PIN 04517-1170

REGISTERED EASEMENTS
PART SUBJECT TO EASEMENT INST. L1248060 DESIGNATED AS PART 6, 48-16648 IN FAVOUR OF KANATA HYDRO, PART SUBJECT TO EASEMENT INST. L1724833 DESIGNATED AS PART 4, 48-17106, PART SUBJECT TO EASEMENT INST. 0055443 (SEE DOCUMENT)

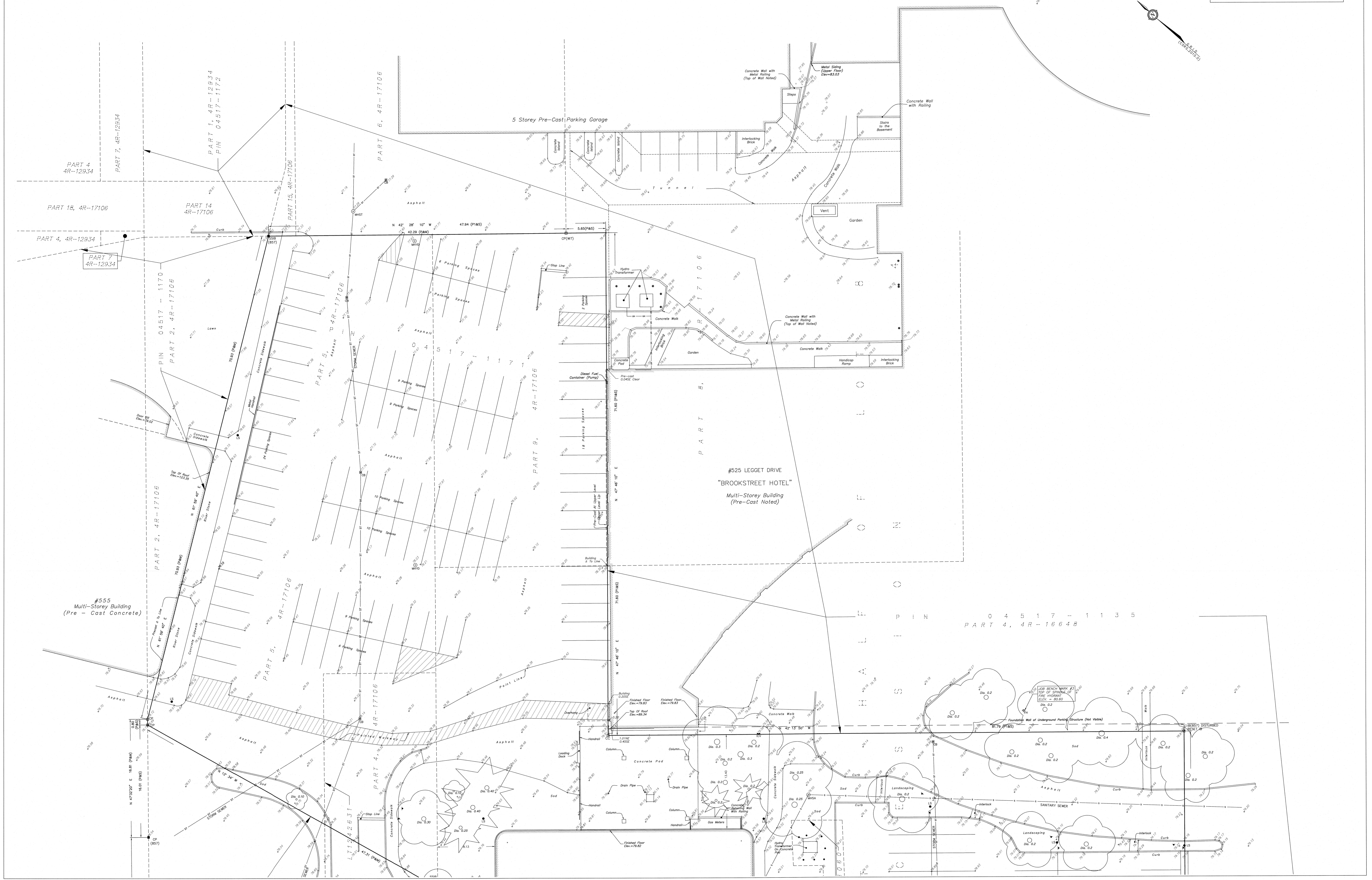
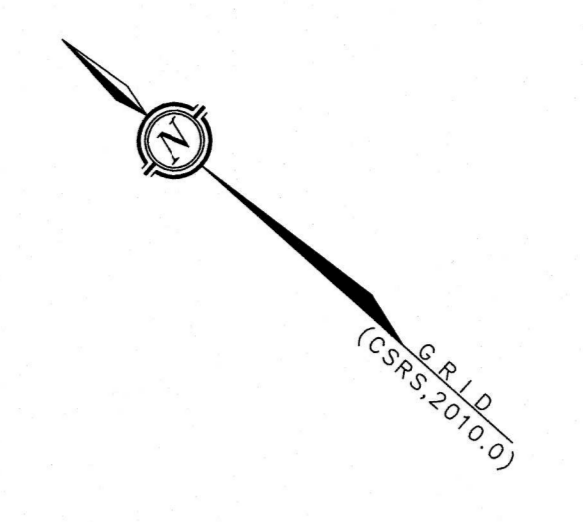
ZONING
COMPLIANCE WITH ZONING, LAND USE, ENVIRONMENTAL AND BUILDING REGULATIONS NOT CERTIFIED BY THIS REPORT.

THIS REPORT WAS PREPARED FOR
KANATA RESEARCH PARK CORPORATION
THE UNDERSIGNED ACCEPTS NO RESPONSIBILITY FOR USE BY OTHER PARTIES.

SURVEYOR'S CERTIFICATE
I CERTIFY THAT:
1. THE SURVEY AND PLAN ARE CORRECT AND IN ACCORDANCE WITH THE SURVEY ACT AND THE REGULATIONS MADE UNDER THEM.
2. THE SURVEY WAS COMPLETED ON JULY 22, 2024.

DATE: 22/07/24
SIGNATURE: JOHN H. GILTS
OFFICE: OTTAWA
ON TOWNSHIP OF MARCH

Fairhall Moffatt & Woolland
A E I 6 0 0 0
E 300333, N 0023298
REFERENCE NO. 214-8 MARCH
Purveying and Land Information Services
100-000 1000 CITE DRIVE, SUITE 100, OTTAWA, ONTARIO
TEL: (613) 991-2266 FAX: (613) 991-1465
E-MAIL: info@fmo.ca
TP_AE1600.dwg (4)



PART 4
4R-12934

PART 7, 4R-12934

PART 1, 4R-12934
PIN 04517-1172

PART 18, 4R-17106

PART 14
4R-17106

PART 15, 4R-17106

PART 6, 4R-17106

PART 4, 4R-12934

PART 7
4R-12934

PART 2, 4R-17106
PIN 04517-1170
PART 2, 4R-17106

PART 5, 4R-17106
PART 5, 4R-17106

PART 9, 4R-17106

#525 LEGGET DRIVE
"BROOKSTREET HOTEL"
Multi-Storey Building
(Pre-Cast Noted)

#555
Multi-Storey Building
(Pre - Cast Concrete)

PIN 04517-1135
PART 4, 4R-16648