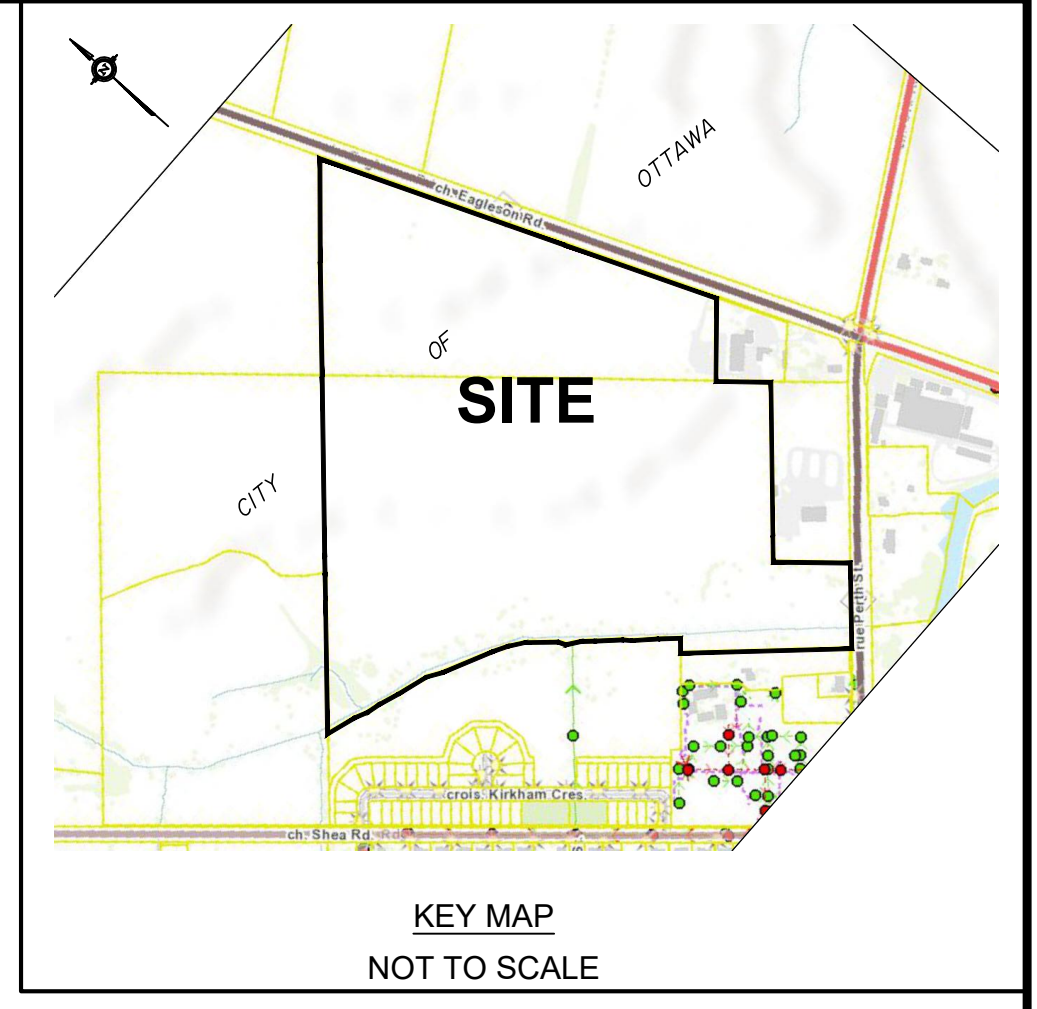


REVISION SCHEDULE			
NO.	REVISION	DATE	BY
4	REVISED CONCEPT	SEPT. 5, 2024	N
3	REVISIONS	JULY 13, 2022	N
2	REVISIONS	FEB. 16, 2022	N
1	PLAN PREPARED	NOV. 17, 2021	N



**DRAFT PLAN OF SUBDIVISION OF PART OF LOTS 26 and 27 CONCESSION 4**  
 Geographic Township of Goulbourn  
**CITY OF OTTAWA**  
 Prepared by Annis, O'Sullivan, Vollebek Ltd.  
 September 5, 2024

Scale 1:1250  
 50 37.5 25 12.5 0 25 50 Metres

Metric  
 DISTANCES SHOWN ON THIS PLAN ARE IN METRES AND CAN BE CONVERTED TO FEET BY DIVIDING BY 0.3048

**SURVEYOR'S CERTIFICATE**

I CERTIFY THAT:  
 The boundaries of the lands to be subdivided and their relationship to adjoining lands have been accurately and correctly shown.

Date \_\_\_\_\_  
 Mirel Aradu  
 ONTARIO LAND SURVEYOR

**OWNER'S CERTIFICATE**

This is to certify that I am the owner / agent of the lands to be subdivided and that this plan was prepared in accordance with my instructions.

Date \_\_\_\_\_  
 Greg Graham  
 1470424 Ontario Inc.  
 Cardel Group of Companies  
 I have authority to bind the corporation

**ADDITIONAL INFORMATION REQUIRED UNDER SECTION 51-17 OF THE PLANNING ACT**

- (a) see plan
- (b) see plan
- (c) see plan
- (d) single and multi-family residential housing, park land, storm water management
- (e) see plan
- (f) see plan
- (g) see plan
- (h) City of Ottawa
- (i) see soils report
- (j) see plan
- (k) sanitary, storm sewers, municipal water, bell, hydro, cable and gas to be available
- (l) see plan

PROPOSED LAND USE TABLE			
PROPOSED USE	LOTS / BLOCKS	NUMBER OF UNITS	AREA (sqm)
SINGLE DETACHED	1 - 255	255	98 192
TOWNHOMES	252, 253, 261, 262, 272, 273, 281, 282, 299	139	33 155
SEMI DETACHED	254-256, 260, 263-270, 274-279, 292-296, 300-307	70	22 651
STREETS	1 - 6		63 359
PARK LAND	294		7 918
WALKWAYS	259, 280, 283, 285, 289, 291		2 613
STORM WATER LANDS	286		13 400
PUMPING STATION	287		1 307
OTHER	271		474
	288		274
	290		91 430
	308		2 561
TOTAL		464	337 334

