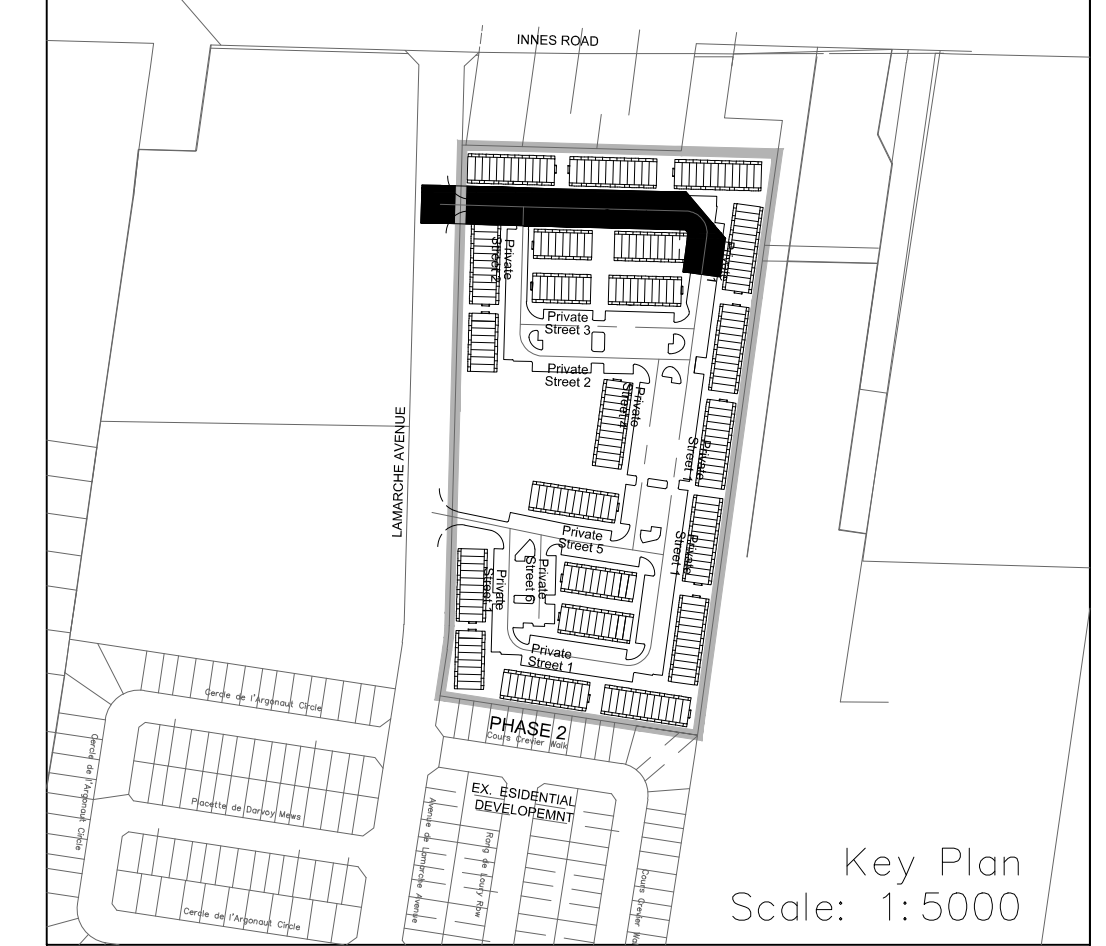
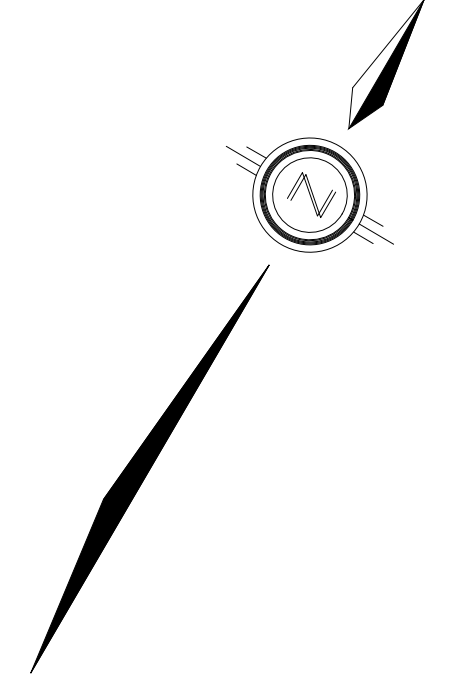
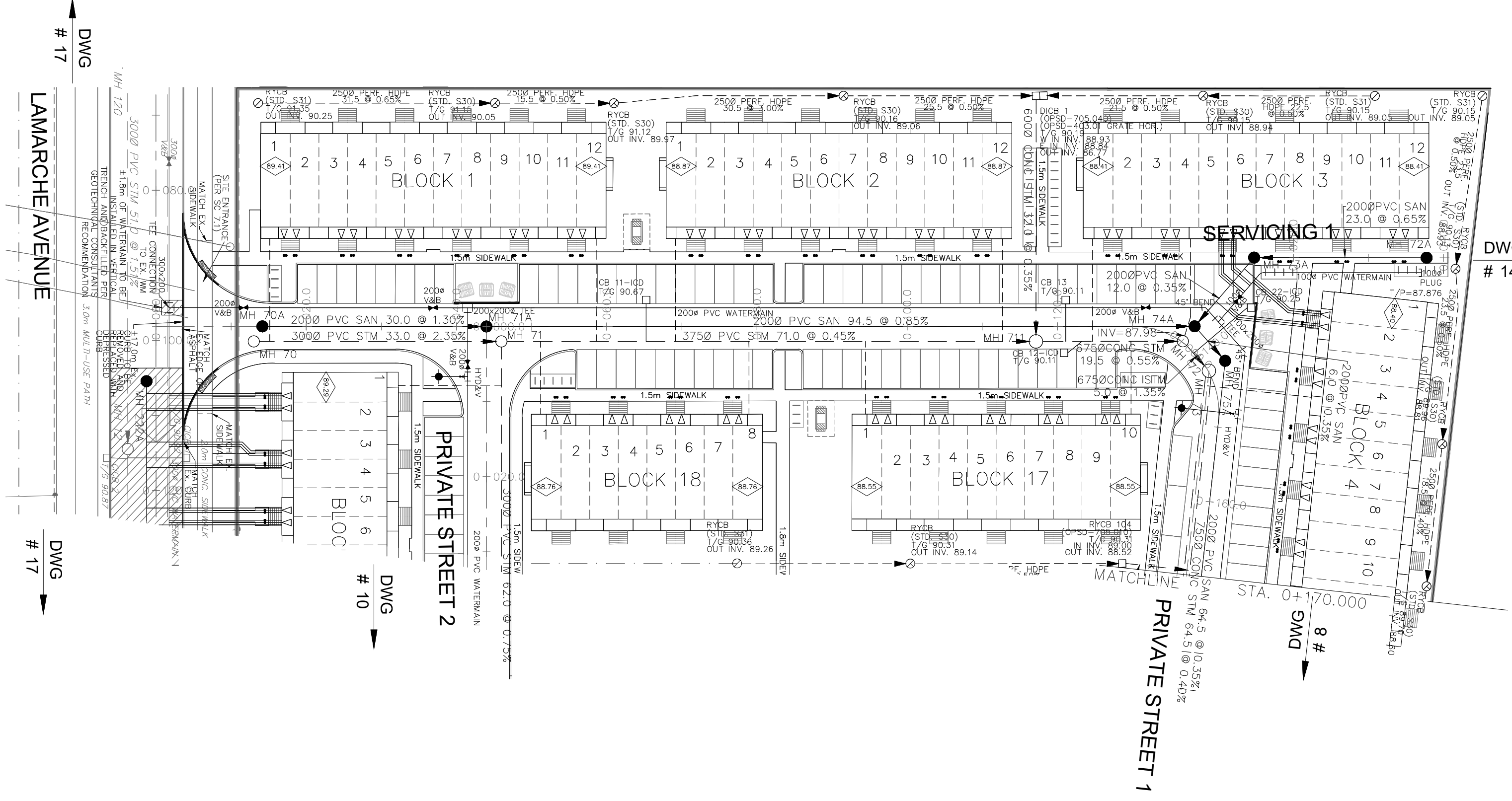


NOTES:

1. ANY DISTURBED AREA DURING CONSTRUCTION TO BE RESTORED TO THE ORIGINAL CONDITION OR BETTER TO THE SATISFACTION OF THE AUTHORITIES HAVING JURISDICTION. CONTRACTOR TO VERIFY THE PRECISE LOCATIONS AND INVERT ELEVATIONS OF EX. UNDERGROUND SERVICES AND EX. UTILITIES PRIOR TO STARTING CONSTRUCTION.
2. ALL EXISTING TREES, SHRUBS ETC. WITHIN LOTS, BLOCKS AND ROADS TO BE REMOVED, UNLESS OTHERWISE NOTED.
3. PERMISSION REQUIRED FOR WORK ON ADJACENT LANDS.
4. FOR WATERMAIN STUBS, 2.4m MIN. COVER TO BE PROVIDED.
5. ANY DISTURBED MATERIAL ENCOUNTERED BELOW THE SUBGRADE LEVEL WITHIN A BUILDING FOOTPRINT TO BE SUB-EXCAVATED AND BACKFILLED WITH COMPACTED ENGINEERED FILL AS PER GEOTECHNICAL ENGINEERS RECOMMENDATION.
6. FOR CATCHBASIN DATA, REFER TO DWG. No. 2 FOR DETAILS.
7. ALL DWELLINGS TO BE PROVIDED WITH PRESSURE REDUCING VALVES UNLESS OTHERWISE NOTED.



LEGEND

CROSS	→	EARTHEN (DWG. 3 FOR DETAILS)	→
45° BEND	↘	CONCRETE SIDEWALK	▬
LATERAL	→	CURB & RECESSED CURB	▬
HYDRANT, VALVE & VB	→	ASPHALT SIDEWALK	▬
TEE	→	CHAINLINK FENCE (1.5m UNLESS OTHERWISE NOTED)	▬
VALVE & VC	→	NOISE BARRIER (2.2m)	▬
VALVE & VB	→	WOODEN POST AND RAIL FENCE	▬
22.5° BEND	↘	CONSTRUCTION FENCE	▬
11.25° BEND	↘	POST AND RAIL FENCE	▬
REDUCER	→	PHASING LIMITS	▬
CAP	→	PROPERTY BOUNDARY	▬
SANITARY MAINTENANCE HOLE	→	BORING (BH)	→
CAP	→	TEST PIT (TP)	→
STREET CATCHBASIN & LEAD	→	AUGER HOLE (AH)	→
STREET CATCHBASIN WITH CLOSED LID & LEAD	→	MONITORING WELL LOCATION	→
STORM MAINTENANCE HOLE	→	CONCEPTUAL WELL LOCATION	→
CURB INLET CATCHBASIN & LEAD	→	TOP OF FOUNDATION ELEVATION	→
CATCHBASIN/ MAINTENANCE HOLE	→	FINISHED FLOOR ELEVATION	→
INTERCONNECTED	→	UNDERSIDE OF FOOTING ELEVATION	→
CATCH BASIN & LEADS	→	NUMBER OF RISERS	→
CAP	→	UNITS REQUIRING PRESSURE	→
CURB STOP	→	REDUCING VALVES	→
SINGLE SERVICE LOCATION (ST, SAN & WM)	→	WALK-OUT UNITS	→
TEE CATCHBASIN	→	SLAB ON GRADE	→
PERFORATED PIPE	→	OVERLAND FLOW DIRECTION	→
ELBOW CATCHBASIN	→	EXTERNAL OVERLAND FLOW DIRECTION	→
DITCH AND CULVERT	→	EMERGENCY OVERLAND FLOW DIRECTION	→
36.0m-250# INFILTRATION TRENCH (TYP.), SEE DETAIL ON DRAWING 4.	→	TACTILE WALKING SURFACE INDICATOR (AS PER CITY OF OTTAWA STD. SC6, SC7, SC7.1, SC7.2, SC7.3)	→
HYDRO TRANSFORMER	→	EXISTING SANITARY MAINTENANCE HOLE	→
RETAINING WALL (SEE NOTES ON DWG. 1 AND STRUCTURAL DWG'S FOR DETAIL)	→	EXISTING STORM MAINTENANCE HOLE	→
		GROUNDWATER LEVEL PER PATERNSON GROUP DWG. PD006-10	→
		PREVIOUS PHASES	→

NOT FOR CONSTRUCTION

TOPOGRAPHIC INFORMATION
 TOPOGRAPHIC INFORMATION PROVIDED BY J.D. BARNES LIMITED
 PROJECT No. 16-10-116-00, SURVEYS DATED NOVEMBER 30, 2017.
 PROJECT No. 16-10-116-00_P2, SURVEYS DATED SEPTEMBER 27, 2019.
 PROJECT No. 22-10-030-01, SURVEYS DATED JUNE 21, 2023.

SITE PLAN INFORMATION
 SITE PLAN PROVIDED BY Q4 ARCHITECTS, DATED ON AUGUST 6, 2024.

ELEVATION NOTE
 ELEVATIONS ARE GEODETIC AND ARE DERIVED FROM SITE BENCHMARK NCC CONTROL POINT 001196530229.
 ELEVATION = 86.12 m

No.	BY	DATE	DESCRIPTION
1	S.L.M.	2024-08-30	1st SUBMISSION

CITY OF OTTAWA

CITY PLAN No. ####

PROJECT No. 24-1403

Licensed Professional Engineer
S. L. MERRICK
 100186523
 2024-08-30
 PROVINCE OF ONTARIO

CAIVAN (ORLEANS VILLAGE 2) LTD.

ORLEANS VILLAGE PHASE 4

DSEL

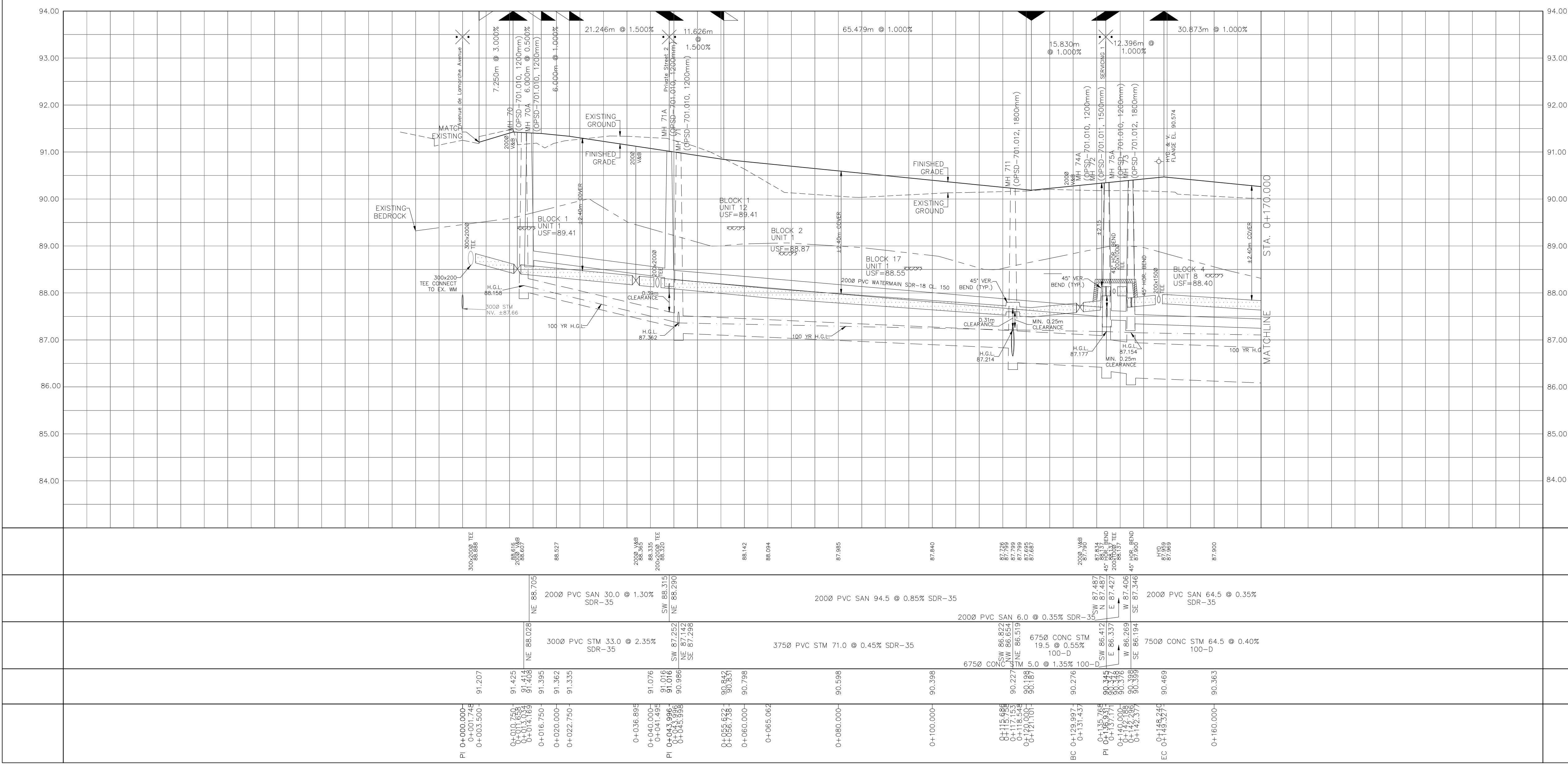
120 Iber Road, Unit 103
 Stittsville, ON K2S 1E9
 Tel: (613) 836-0856
 Fax: (613) 836-7183
 www.DSEL.ca

Private Street 1

© DSEL

STA. 0+10.000 TO STA. 0+170.000

DRAWN BY: C.P.B.	CHECKED BY: S.L.M.	SHEET NO. 7 OF 25
DESIGNED BY: C.P.B.	CHECKED BY: S.L.M.	
SCALE: 1:500	DATE: AUGUST 2024	



CITY PLAN No. ####
CITY FILE No. ####