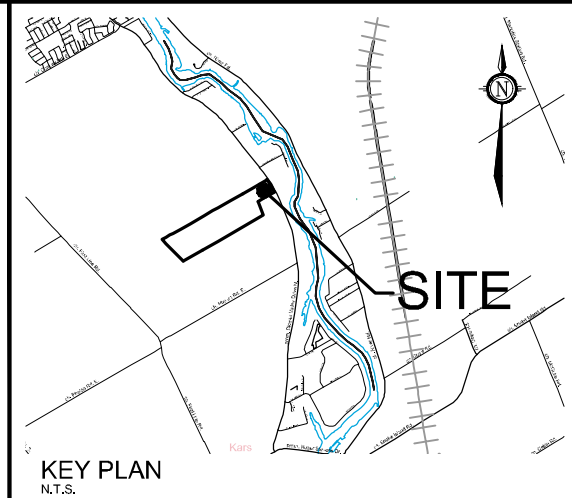
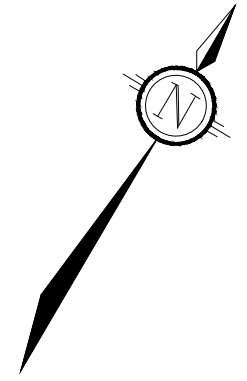
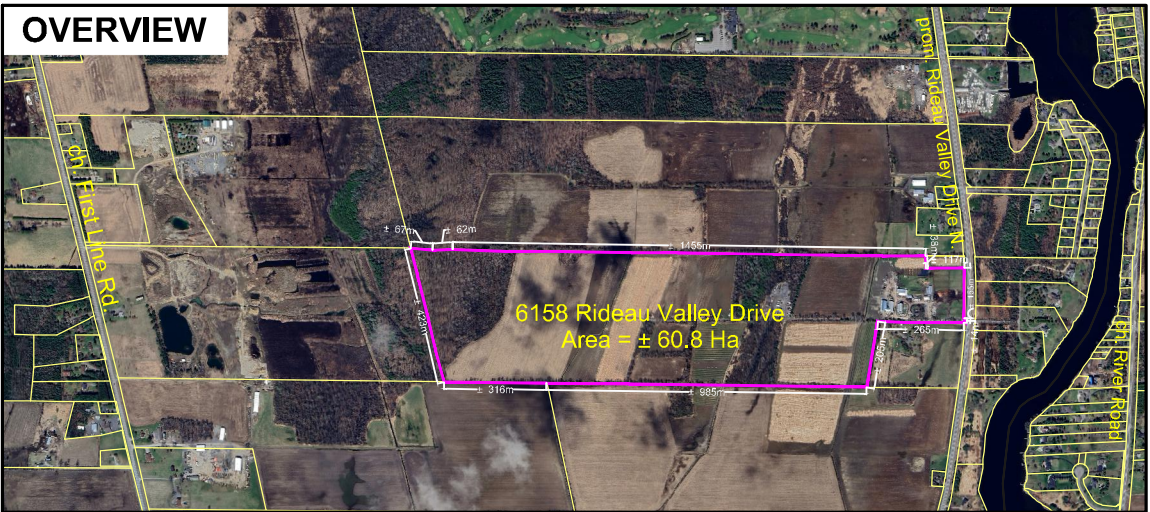


OVERVIEW



KEY PLAN
N.T.S.

CONCEPT PLAN

6158 RIDEAU VALLEY DRIVE

PART LOT 14, CON 1 Geographic
Township of North Gower
CITY OF OTTAWA



1 : 1250

No.	REVISION	DATE	BY

NOVATECH
Engineers, Planners & Landscape Architects
Suite 200, 240 Michael Cowland Drive
Ottawa, Ontario, Canada K2M 1P6
Telephone: (813) 254-9643
Facsimile: (613) 254-5867
Website: www.novatech-eng.com

ISSUED
SEPTEMBER 2024
PROJECT No. 121265
DRAWING No. 121265-FIG-CP