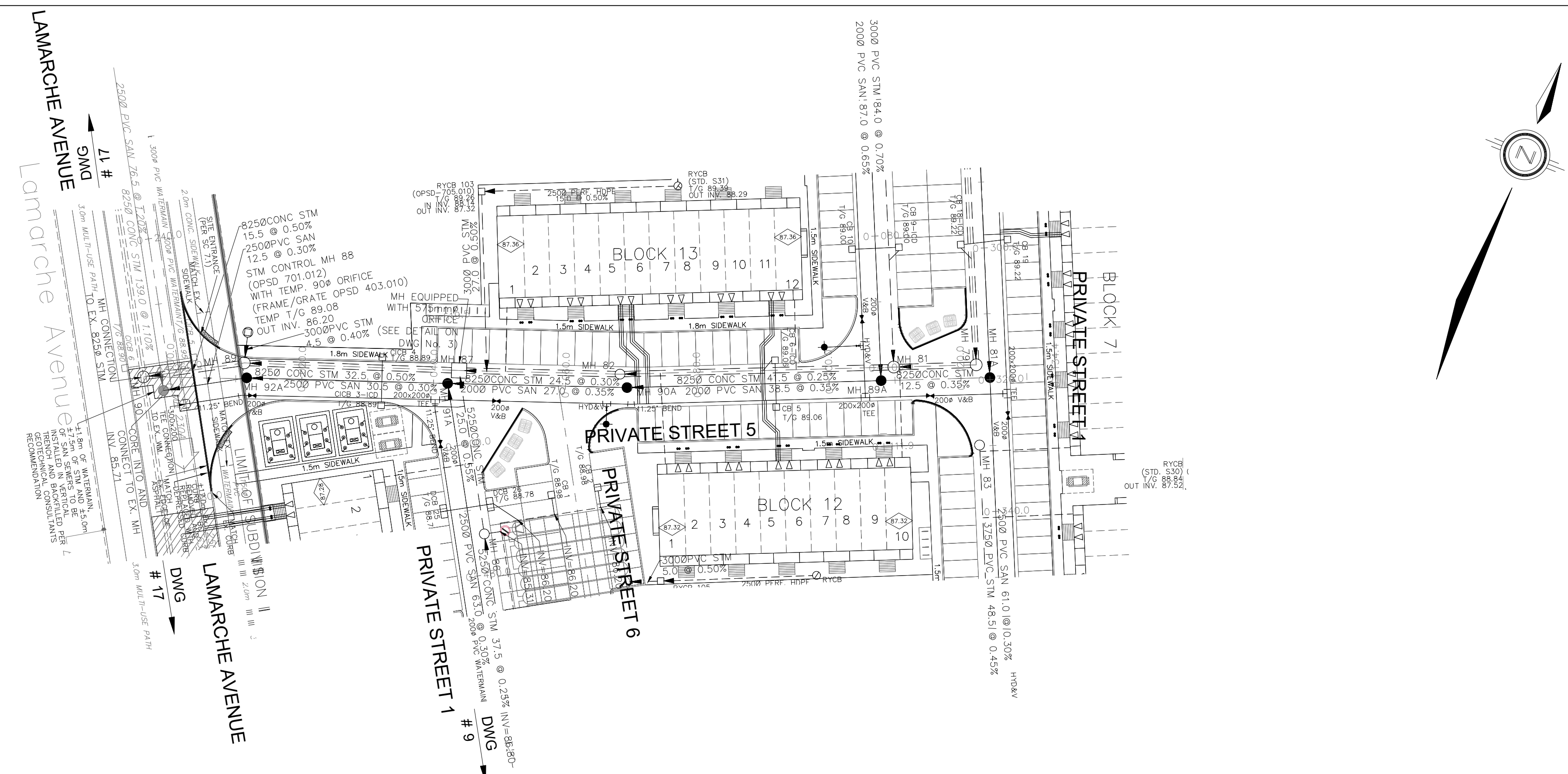


NOTES:

1. ANY DISTURBED AREA DURING CONSTRUCTION TO BE RESTORED TO THE ORIGINAL CONDITION OR BETTER TO THE SATISFACTION OF THE AUTHORITIES HAVING JURISDICTION. CONTRACTOR TO VERIFY THE PRECISE LOCATIONS AND INVERT ELEVATIONS OF EX. UNDERGROUND SERVICES AND EX. UTILITIES PRIOR TO STARTING CONSTRUCTION.
2. ALL EXISTING TREES, SHRUBS ETC. WITHIN LOTS, BLOCKS AND ROADS TO BE REMOVED, UNLESS OTHERWISE NOTED.
3. PERMISSION REQUIRED FOR WORK ON ADJACENT LANDS.
4. FOR WATERMAIN STUBS, 2.4m MIN. COVER TO BE PROVIDED.
5. ANY DISTURBED MATERIAL ENCOUNTERED BELOW THE SUBGRADE LEVEL WITHIN A BUILDING FOOTPRINT TO BE SUB-EXCAVATED AND BACKFILLED WITH COMPACTED ENGINEERED FILL AS PER GEOTECHNICAL ENGINEERS RECOMMENDATION.
6. FOR CATCHBASIN DATA, REFER TO DWG. No. 2 FOR DETAILS.
7. ALL DWELLINGS TO BE PROVIDED WITH PRESSURE REDUCING VALVES UNLESS OTHERWISE NOTED.



LEGEND

CROSS	BIKE RACK	AS PER GEOTECHNICAL REPORT
45° BEND	EARTHEN (DWG. 3 FOR DETAILS)	CONCEPTUAL WELL LOCATION
LATERAL	STREET LIGHT STANDARD	TOP OF FOUNDATION ELEVATION
HYDRANT, VALVE & VB	CONCRETE SIDEWALK	FINISHED FLOOR ELEVATION
TEE	CURB & RECESSED CURB	UNDERSIDE OF FOOTING ELEVATION
VALVE & VC	ASPHALT SIDEWALK	NUMBER OF RISERS
VALVE & VB	CHAINLINK FENCE (1.5m UNLESS OTHERWISE NOTED)	UNITS REQUIRING PRESSURE REDUCING VALVES
22.5° BEND	NOISE BARRIER (2.2m)	WALK-OUT UNITS
11.25° BEND	WOODEN POST AND RAIL FENCE	SLAB ON GRADE
REDUCER	CONSTRUCTION FENCE	OVERLAND FLOW DIRECTION
CAP	POST AND RAIL FENCE	EXTERNAL OVERLAND FLOW DIRECTION
SANITARY MAINTENANCE HOLE	PROPERTY LIMITS	EMERGENCY OVERLAND FLOW DIRECTION
CAP	PROPERTY BOUNDARY	TACTILE WALKING SURFACE INDICATOR (AS PER CITY OF OTTAWA STD. SC6, SC7, SC7.1, SC7.2, SC7.3)
STREET CATCHBASIN & LEAD	BOREHOLE (BH)	EXISTING SANITARY MAINTENANCE HOLE
STREET CATCHBASIN WITH CLOSED LID & LEAD	TEST PIT (TP)	EXISTING STORM MAINTENANCE HOLE
STORM MAINTENANCE HOLE	AUGER HOLE (AH)	GROUNDWATER LEVEL PER PATERNON GROUP DWG. P0009-10
CURB INLET CATCHBASIN & LEAD	MONITORING WELL LOCATION	
CATCHBASIN/ MAINTENANCE HOLE	CONSTRUCTION WELL LOCATION	
INTERCONNECTED	TOP OF FOUNDATION ELEVATION	
CATCH BASIN & LEADS	FINISHED FLOOR ELEVATION	
CAP	UNDERSIDE OF FOOTING ELEVATION	
CURB STOP	NUMBER OF RISERS	
SINGLE SERVICE LOCATION (ST, SAN & WM)	UNITS REQUIRING PRESSURE REDUCING VALVES	
TEE CATCHBASIN	WALK-OUT UNITS	
PERFORATED PIPE	SLAB ON GRADE	
ELBOW CATCHBASIN	OVERLAND FLOW DIRECTION	
DITCH AND CULVERT	EXTERNAL OVERLAND FLOW DIRECTION	
36.0m-250# INFILTRATION TRENCH (TYP.), SEE DETAIL ON DRAWING 4.	TACTILE WALKING SURFACE INDICATOR (AS PER CITY OF OTTAWA STD. SC6, SC7, SC7.1, SC7.2, SC7.3)	
HYDRO TRANSFORMER	EXISTING SANITARY MAINTENANCE HOLE	
RETAINING WALL (SEE NOTES ON DWG. 1 AND STRUCTURAL DWG'S FOR DETAIL)	EXISTING STORM MAINTENANCE HOLE	
	GROUNDWATER LEVEL PER PATERNON GROUP DWG. P0009-10	

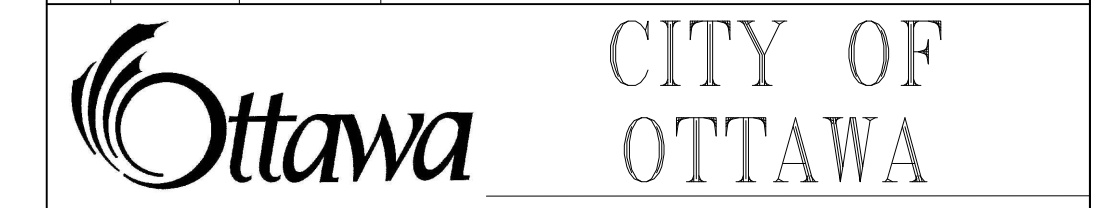
NOT FOR CONSTRUCTION

TOPOGRAPHIC INFORMATION
 TOPOGRAPHIC INFORMATION PROVIDED BY J.D. BARNES LIMITED
 PROJECT No. 16-10-116-00, SURVEYS DATED NOVEMBER 30, 2017.
 PROJECT No. 16-10-116-00_P2, SURVEYS DATED SEPTEMBER 27, 2019.
 PROJECT No. 22-10-030-01, SURVEYS DATED JUNE 21, 2023.

SITE PLAN INFORMATION
 SITE PLAN PROVIDED BY Q4 ARCHITECTS, DATED ON AUGUST 6, 2024.

ELEVATION NOTE
 ELEVATIONS ARE GEODETIC AND ARE DERIVED FROM SITE BENCHMARK NCC CONTROL POINT 001196530229.
 ELEVATION = 86.12 m

No.	BY	DATE	DESCRIPTION
1	S.L.M.	2024-08-30	1st SUBMISSION



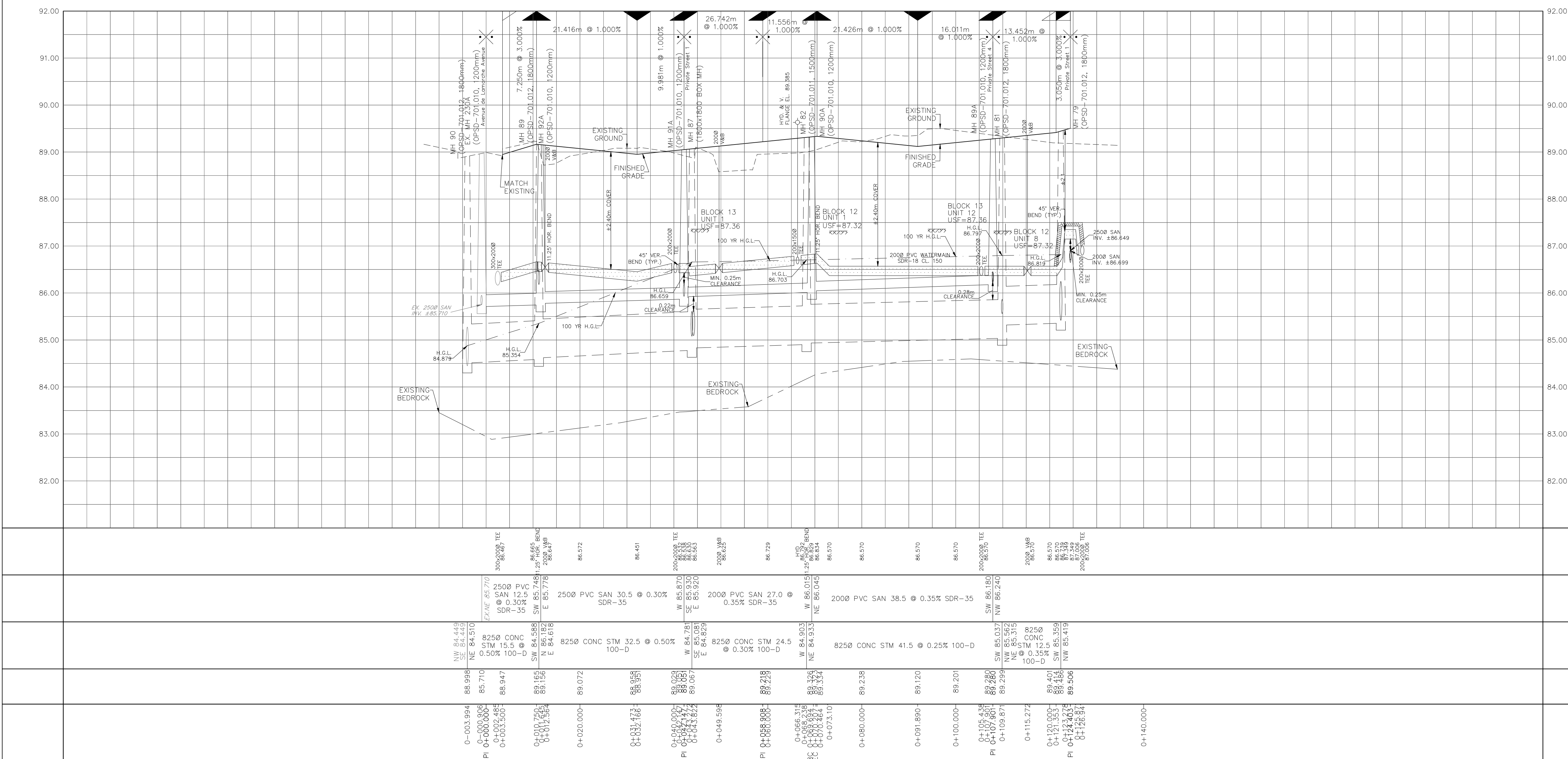
PROJECT No. 24-1403

CAIVAN (ORLEANS VILLAGE 2) LTD. ORLEANS VILLAGE PHASE 4

DSEL 120 Iler Road, Unit 103
 Stittsville, ON K2S 1E9
 Tel: (613) 836-0856
 Fax: (613) 836-7183
 www.DSEL.ca

Private Street 5 © DSEL
 STA. 0+10.000 TO STA. 0+134.403

DRAWN BY: C.P.B.	CHECKED BY: S.L.M.	SHEET NO.
DESIGNED BY: C.P.B.	CHECKED BY: S.L.M.	13 OF 25
SCALE: 1:500	DATE: AUGUST 2024	



CITY PLAN No. ###
 CITY FILE No. ###