

Copyright Reserved

The Contractor shall verify and be responsible for all dimensions. DO NOT scale the drawings - any errors or omissions shall be reported to Stantec without delay.
The Copyrights to all designs and drawings are the property of Stantec. Reproduction or use for any purpose other than that authorized by Stantec is forbidden.

Legend

- PROPOSED WATERMAIN
- PROPOSED VALVE AND VALVE BOX
- PROPOSED VALVE CHAMBER
- PROPOSED REDUCER
- PROPOSED FIRE HYDRANT
- PROPOSED SANITARY SEWER
- PROPOSED STORM SEWER
- PROPOSED CATCHBASIN
- PROPOSED WATTS AREA DRAIN OR EQUIVALENT TO BE CONNECTED TO STORMWATER CISTERN VIA INTERNAL STORM SEWER PLUMBING. REFER TO MECHANICAL DRAWINGS FOR DETAILS.
- EX/FUT. WATERMAIN
- EXISTING/FUTURE VALVE AND VALVE BOX
- EXISTING/FUTURE VALVE CHAMBER
- EXISTING/FUTURE REDUCER
- EXISTING/FUTURE FIRE HYDRANT
- EXISTING/FUTURE SANITARY SEWER
- EXISTING/FUTURE STORM SEWER
- EXISTING/FUTURE CATCHBASIN MANHOLE
- EXISTING/FUTURE CATCHBASIN
- PROPOSED DEPRESSED CURB LOCATIONS
- PROPOSED BARRIER CURB
- THERMAL INSULATION ON STORM SEWER WHERE COVER IS LESS THAN 1.5m. THERMAL INSULATION ON WATERMAIN WHERE COVER IS LESS THAN 2.4m AS PER W22.
- WATER METER
- REMOTE WATER METER
- LANDSCAPE AREAS
- ROAD CUT AS PER CITY OF OTTAWA STANDARD DETAIL R10
- EXISTING STREET LIGHT CABLE
- EXISTING BELL LINE
- EXISTING ROGERS LINE
- EXISTING GASMAIN

Notes

1. OFF SITE SANITARY, WATER AND STORM RELOCATIONS ARE SCHEMATIC AND WILL BE FINALIZED ONCE LOCATES AND TOPO PICK UP COMPLETED.
2. BOOSTER PUMP FOR WATER SERVICING REQUIRED TO MAINTAIN DESIRED PRESSURE IN UPPER LEVELS.
3. SLUMP PUMP REQUIRED TO DISCHARGE INTERNAL SANITARY SEWER. (REFER TO MECHANICAL DRAWINGS FOR DETAILS)
4. FLOOR DRAINS LOCATED INSIDE PARKING GARAGE TO BE CONNECTED TO BUILDING INTERNAL SANITARY SEWER.
5. REFER TO ARCHITECTURAL DRAWINGS FOR TOP OF PARKING GARAGE AND PARKING LEVELS.
6. USE TO BE CONFIRMED BY STRUCTURAL CONSULTANT.
7. INTERNAL PLUMBING AND SLUMP PUMPS TO BE DESIGNED BY THE MECHANICAL CONSULTANT.
8. ROOF DRAINS CONNECTED TO INTERNAL PLUMBING SYSTEM AND STORMWATER MANAGEMENT CISTERN.
9. STORMWATER MANAGEMENT TO BE PROVIDED THROUGH A 120m³ CISTERN LOCATED IN THE UNDERGROUND PARKING GARAGE.
10. PUMP TO BE PROVIDED BY MECHANICAL ENGINEER TO ACHIEVE CISTERN MAX RELEASE RATE OF 38.1 L/s

Revision	By	Appd.	YY.MM.DD
2	WAJ	DCT	24.07.05
1	MJS	MF	23.03.15
0	MJS	AMP	21.02.17

File Name:	MJS	MF	MJS	21.01.07
160401596-DB	Dwn.	Chkd.	Dgn.	YY.MM.DD

Permit-Seal

Client/Project

BRIGIL HOMES

2829 DUMAURIER AVENUE
40 STOREY APARTMENT BUILDING
OTTAWA, ON, CANADA

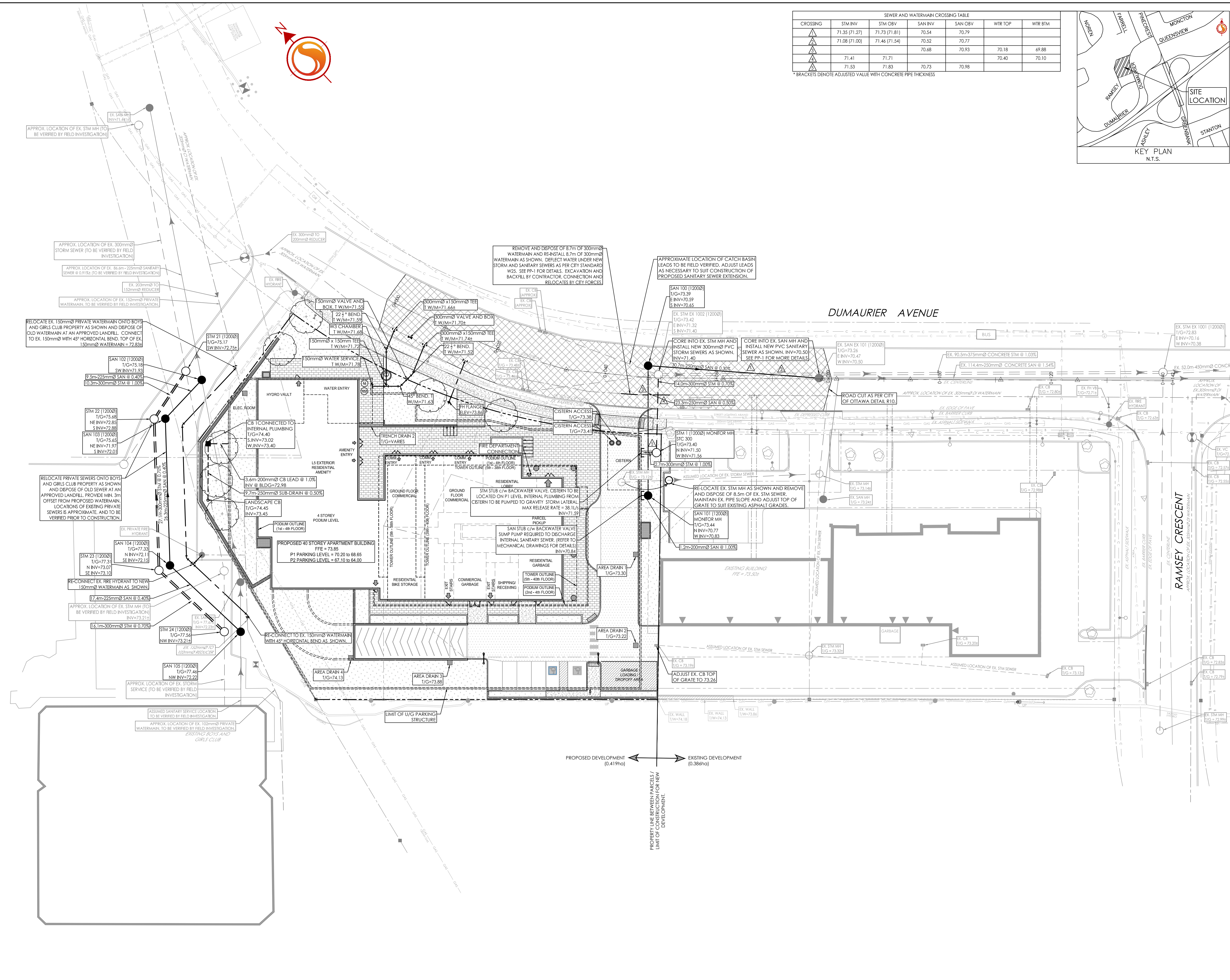
Title

SITE SERVICING PLAN

Project No.	Scale	Sheet	Revision
160401596	1:300	3 of 8	2
Drawing No.	SSP-1		

CROSSING	STM INV	STM OBV	SAN INV	SAN OBV	WTR TOP	WTR BTM
▲	71.35 (71.27)	71.73 (71.81)	70.54	70.79		
▲	71.08 (71.00)	71.46 (71.54)	70.52	70.77		
▲	71.41	71.71	70.68	70.93	70.18	69.88
▲	71.53	71.83	70.73	70.98	70.40	70.10

* BRACKETS DENOTE ADJUSTED VALUE WITH CONCRETE PIPE THICKNESS



W:\Projects\160401596\160401596-DB.dwg
 2024/07/05 1:52 PM
 2024/07/05 1:52 PM
 160401596-DB.dwg