



Copyright Reserved

The Contractor shall verify and be responsible for all dimensions. DO NOT scale the drawing - any errors or omissions shall be reported to Stantec without delay.
The Copyrights to all designs and drawings are the property of Stantec. Reproduction or use for any purpose other than that authorized by Stantec is forbidden.

Legend

- L101A** AREA ID
- 1.00 0.85 RUNOFF COEFFICIENT
- STORM DRAINAGE AREA hg.
- STORM DRAINAGE BOUNDARY
- EXT-1** AREA ID
- 1.00 0.50 EXTERNAL RUNOFF COEFFICIENT
- EXTERNAL STORM DRAINAGE AREA hg.
- EXTERNAL STORM DRAINAGE BOUNDARY
- DIRECTION OF OVERLAND FLOW
- PROPOSED STORM MH AND SEWER
- PROPOSED CATCHBASIN MANHOLE
- PROPOSED CATCHBASIN
- EXISTING STORM MH AND SEWER
- EXISTING CATCHBASIN
- EXISTING COMBINED MH AND SEWER
- THERMAL INSULATION ON STORM SEWER WHERE COVER IS LESS THAN 1.5m. THERMAL INSULATION ON WATERMAIN WHERE COVER IS LESS THAN 2.4m AS PER W22.
- MAXIMUM STATIC PONDING LIMITS

Notes

| | | | | |
|-----------------------------|-------------------|------|-------|----------|
| 1 | ISSUED FOR REVIEW | JP | DT | 24.07.19 |
| 0 | ISSUED FOR SPA | MJS | DT | 24.01.19 |
| Revision | | By | Appd. | YY.MM.DD |
| File Name: 160401681 D8.dwg | | MJS | DT | MJS |
| | | Dwn. | Chkd. | Dagn. |
| | | | | YY.MM.DD |

Permit-Seal

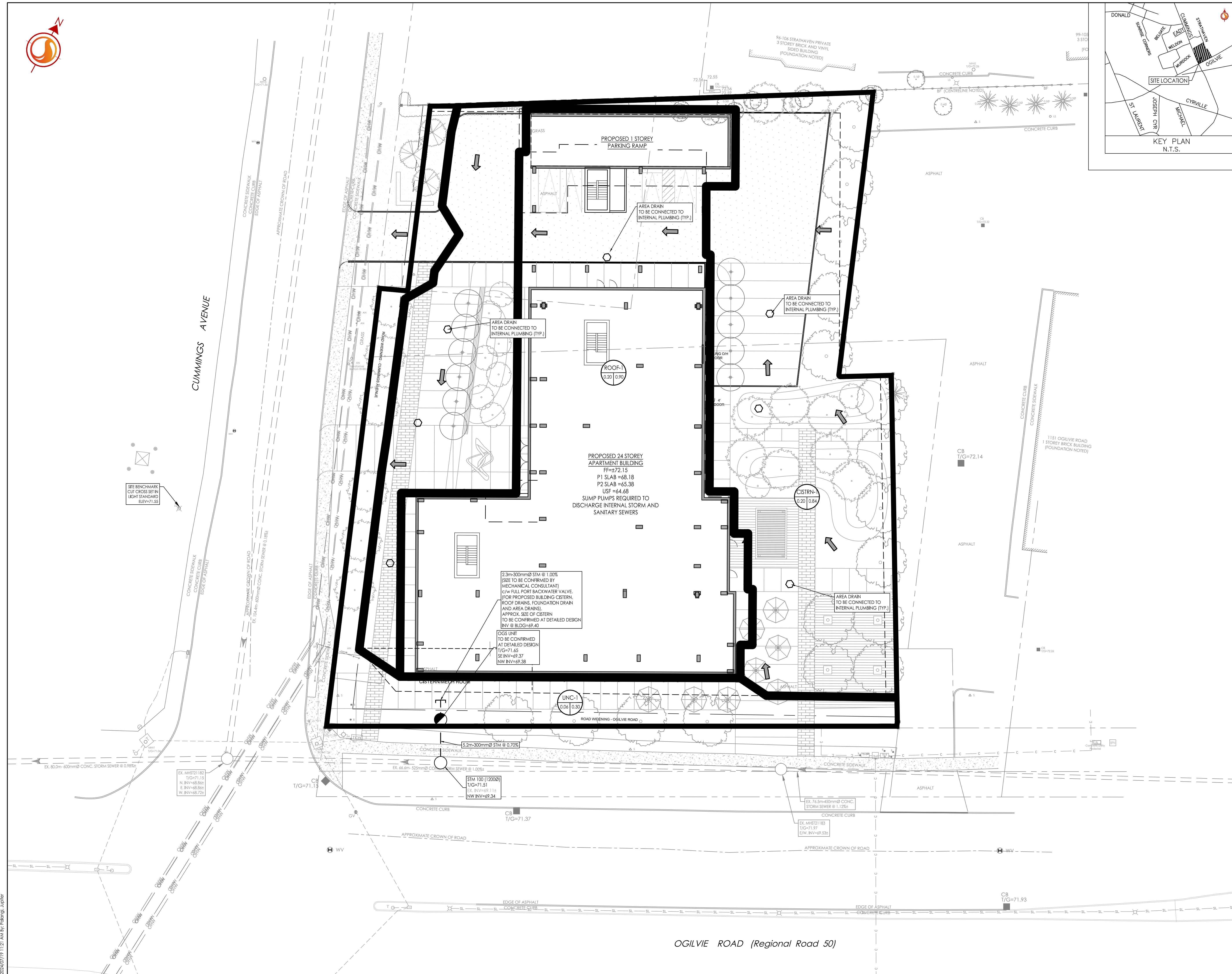


Client/Project
TC UNITED

PROPOSED APARTMENT BUILDING
1137 OGLIVIE ROAD
OTTAWA, ON

Title
STORM DRAINAGE PLAN

| | | |
|-------------|--------|-----------|
| Project No. | Scale | 0 2 6 10m |
| 160401681 | 1:200 | |
| Drawing No. | Sheet | Revision |
| SD-1 | 6 of 7 | 1 |



I:\Projects\160401681\Design\Drawings\160401681 D8.dwg
 2024/07/19 11:21 AM by: 160401681