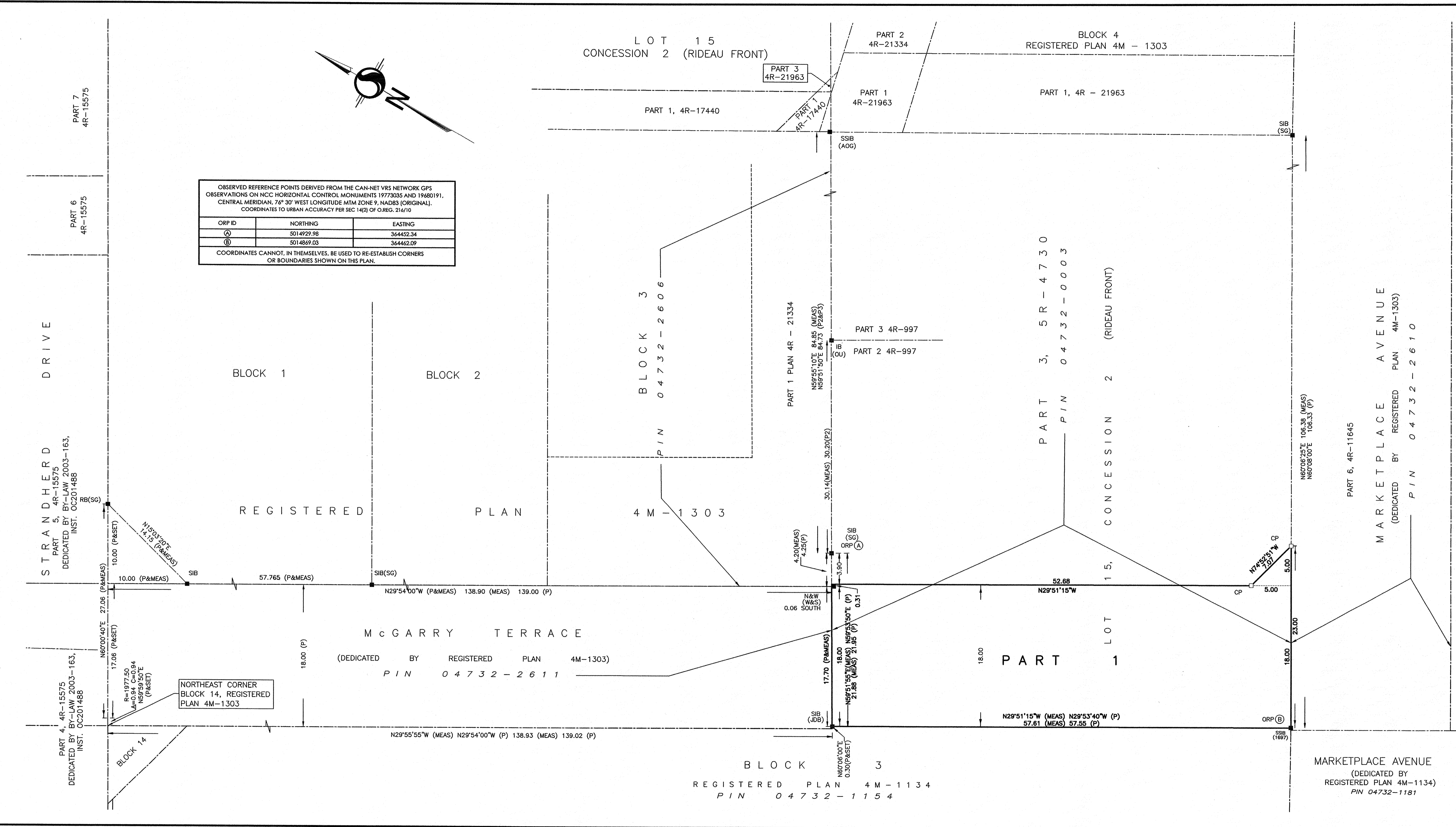


13 September 2018 8:51 AM



OBSERVED REFERENCE POINTS DERIVED FROM THE CAN-NET VRS NETWORK GPS OBSERVATIONS ON NCC HORIZONTAL CONTROL MONUMENTS 19773035 AND 19680191, CENTRAL MERIDIAN, 76° 30' WEST LONGITUDE MTM ZONE 9, NAD83 (ORIGINAL), COORDINATES TO URBAN ACCURACY PER SEC 14(2) OF O.REG. 216/10

ORP ID	NORTHING	EASTING
Ⓐ	5014929.98	364452.34
Ⓑ	5014869.03	364462.09

COORDINATES CANNOT, IN THEMSELVES, BE USED TO RE-ESTABLISH CORNERS OR BOUNDARIES SHOWN ON THIS PLAN.

NORTHEAST CORNER
BLOCK 14, REGISTERED
PLAN 4M-1303

I REQUIRE THIS PLAN TO BE DEPOSITED UNDER THE LAND TITLES ACT.

DATE: Sept 13/18

T. HARTWICK
ONTARIO LAND SURVEYOR

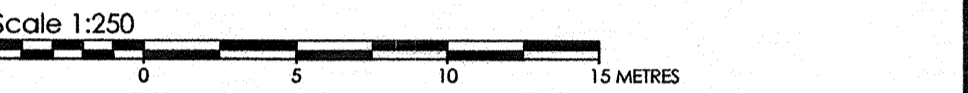
PLAN 4R-31372
RECEIVED AND DEPOSITED
DATE: Sept 13/18
D. Bowdeman
REPRESENTATIVE FOR THE LAND REGISTRAR FOR THE LAND TITLES DIVISION OF OTTAWA-CARLETON No. 4

SCHEDULE

PART	LOT	CONCESSION	PIN	AREA
1	PART OF 15	2 (RIDEAU FRONT)	PART OF 04732-0003	1049 m ²

PART 1 COMPRISES PART OF PIN 04732-0003

PLAN OF SURVEY OF
**PART OF LOT 15
CONCESSION 2 (RIDEAU FRONT)**
(GEOGRAPHIC TOWNSHIP OF NEPEAN)
CITY OF OTTAWA



METRIC CONVERSION
DISTANCES AND COORDINATES SHOWN ON THIS PLAN ARE IN METRES AND CAN BE CONVERTED TO FEET BY DIVIDING BY 0.3048

GRID SCALE CONVERSION
DISTANCES ARE GROUND AND CAN BE CONVERTED TO GRID BY MULTIPLYING BY THE COMBINED SCALE FACTOR OF 0.999934.

BEARING NOTE
BEARINGS ARE GRID, DERIVED FROM THE CAN-NET VRS NETWORK GPS OBSERVATIONS ON NCC HORIZONTAL CONTROL MONUMENTS 19773035 AND 19680191, CENTRAL MERIDIAN, 76° 30' WEST LONGITUDE MTM ZONE 9, NAD83 (ORIGINAL).

19773035 N:5006060.42 E:324888.04
19680191 N:5033554.26 E:388064.94

LEGEND

DENOTES	FOUND MONUMENTS
■	SET MONUMENTS
□	IRON BAR
IB#	ROUND IRON BAR
SIB	STANDARD IRON BAR
SSIB	SHORT STANDARD IRON BAR
CC	CUT CROSS
CP	CONCRETE PIN
WIT	WITNESS
PI#	PROPERTY IDENTIFICATION NUMBER
MEAS	MEASURED
PROP	PROPORTIONED
OU	ORIGIN UNKNOWN
SG	STANTEC GEOMATICS LTD.
ORP	OBSERVED REFERENCE POINT
P	4M-1303
AOG	ANNIS, O'SULLIVAN, VOLLEBEKK LTD.
1697	J.P. SHIPMAN O.L.S.
RB	ROCK BAR
P2	PLAN SR-4419
P3	PLAN SR-4730
JDB	J.D. BARNES LTD.

SURVEYOR'S CERTIFICATE

I CERTIFY THAT:

- THIS SURVEY AND PLAN ARE CORRECT AND IN ACCORDANCE WITH THE SURVEYS ACT, THE SURVEYORS ACT AND THE LAND TITLES ACT AND THE REGULATIONS MADE UNDER THEM.
- THE SURVEY WAS COMPLETED ON THE 5th DAY OF SEPTEMBER, 2018.

DATE: Sept 13/18

T. HARTWICK
ONTARIO LAND SURVEYOR

Stantec
CANADA LANDS SURVEYORS
ONTARIO LAND SURVEYORS
1331 CLYDE AVENUE, SUITE 400
OTTAWA, ONTARIO, K3C 3K4
TEL: 613.722.4420 FAX: 613.722.2799
stantec.com