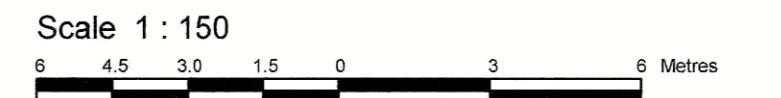


LOTS 559, 560 AND 561
AND
PART OF LOTS 579, 580 AND 581
AND PART OF LANE
(Closed by Judge's Order Inst. GL52533)
REGISTERED PLAN 326
CITY OF OTTAWA
Surveyed by Annis, O'Sullivan, Vollebek Ltd.



Metric
DISTANCES SHOWN ON THIS PLAN ARE IN METRES AND
CAN BE CONVERTED TO FEET BY DIVIDING BY 0.3048

Surveyor's Certificate

- I CERTIFY THAT:
- This survey and plan are correct and in accordance with the Surveys Act, the Surveyors Act and the regulations made under them.
 - The survey was completed on the 11th day of October, 2023.

Date: Oct 20, 2023
T. Hartwick
Ontario Land Surveyor

Notes & Legend

Denotes	
□	Survey Monument Planted
■	Survey Monument Found
SIB	Standard Iron Bar
SSIB	Short Standard Iron Bar
IB	Iron Bar
(WIT)	Witness
Mess.	Measured
(AOG)	Annis, O'Sullivan, Vollebek Ltd.
(PI)	Registered Plan 326
(P2)	(1692) Plan Dated June 4, 2012
(P3)	Plan 4R-29473
(P4)	(1287) Plan Dated July 30, 1987
(P5)	(647) Plan Dated June 16, 1976
(P6)	(AOG) Plan Dated July 8, 2005
○ MH-ST	Maintenance Hole (Storm Sewer)
○ MH-S	Maintenance Hole (Sanitary)
○ MH-B	Maintenance Hole (Bell)
○ MH-T	Maintenance Hole (Traffic)
○ MH-H	Maintenance Hole (Hydro)
○ MH	Maintenance Hole (Unidentified)
○ VC	Valve Chamber (Watermain)
— ST	Underground Storm Sewer
— S	Underground Sanitary Sewer
— W	Underground Water
— P	Underground Power
— G	Underground Gas
— T	Underground Traffic
— B	Underground Bell
— OHW	Overhead Wires
○ UP	Utility Pole
• AN	Anchor
□ CB	Catch Basin
○ LS	Light Standard
T/G	Top of Grate
○ GM	Gas Meter
□ HH	Handhole
○ B	Bollard
△ S	Sign
CLF	Chain Link Fence
BF	Board Fence
EOA	Edge of Asphalt
MTO	Ministry Transportation of Ontario
EOE	Edge of Excavation
□ AC	Air Conditioner
∅	Diameter
∠ 65.00	Location of Elevations
∠ 65.00	Top of Concrete Curb Elevation
○ TL	Traffic Light
○	Deciduous Tree

Bearings are grid, derived from Can-Net 2016 Real Time Network GPS observations and are referenced to Specified Control Points 01919680005 and 01919680105, MTM Zone 9 (76°30' West Longitude) NAD-83 (original).

For bearing comparisons, a rotation of 0°35'20" counter-clockwise was applied to bearings on plan P2 and P3.

ELEVATION NOTES

- Elevations shown are geoidetic and are derived from NCC Monument No. 019680289, having an elevation of 87.147 metres, and are referred to the CGVD28 geoidetic datum.
- It is the responsibility of the user of this information to verify that the job benchmark has not been altered or disturbed and that its relative elevation and description agrees with the information shown on this drawing.

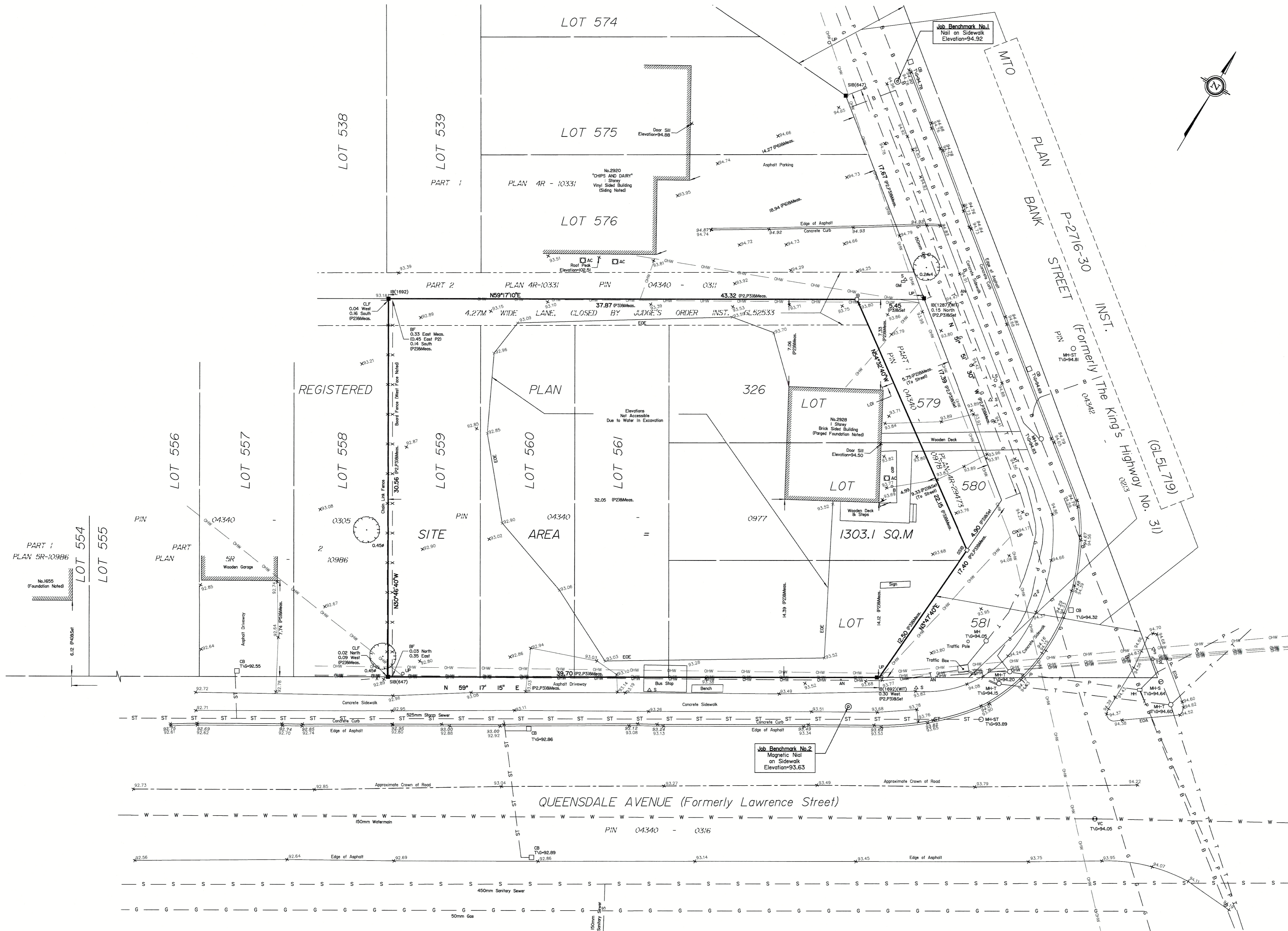
UTILITY NOTES

- This drawing cannot be accepted as acknowledging all of the utilities and it will be the responsibility of the user to contact the respective utility authorities for confirmation.
- Only visible surface utilities were located.
- A field location of underground plant by the pertinent utility authority is mandatory before any work involving breaking ground, probing, excavating etc.
- Underground utility data derived from City of Ottawa utility sheet reference S-17-18-C.

ASSOCIATION OF ONTARIO
LAND SURVEYORS
PLAN SUBMISSION FORM
V-60557

THIS PLAN IS NOT VALID UNLESS
IT IS AN EMBOSSED ORIGINAL
COPY ISSUED BY THE SURVEYOR
In accordance with
Regulation 1026, Section 29 (3).

© Annis, O'Sullivan, Vollebek Ltd. 2023. THIS PLAN IS PROTECTED BY COPYRIGHT.
ANNIS, O'SULLIVAN, VOLLEBEK LTD.
14 Concourse Gate, Suite 500
Nepean, Ont. K2E 7S6
Phone: (613) 727-0850 / Fax: (613) 727-1079
Email: info@anniso.com



1:2023/10/24 10:43:30 AM, Surveyor: T. Hartwick, Plan: V-60557, File: 1026-29(3).dwg, Plot: 1026-29(3).pdf, Scale: 1:150, Date: 2023-10-20, Time: 10:43:30 AM, User: T. Hartwick, Job: 24504-23, Sheet: 1 of 1