

LEGEND

- FFL FIRST FLOOR ELEVATION
- TOP TOP OF FOUNDATION
- BFL BASEMENT FLOOR ELEVATION
- USF UNDERSIDE OF FOOTING
- PROPERTY LINE
- CB CATCH BASIN
- MH STORM MANHOLE
- MH SANITARY MANHOLE
- VC VALVE CHAMBER
- EXISTING GRADE ELEVATION
- +99.99 PROPOSED GRADE ELEVATION
- 2% PROPOSED SLOPE OF GRADE
- 150mm BARRIER CURB
- D.C. DEPRESSED CURB
- LIGHT-DUTY PAVEMENT
- HEAVY-DUTY PAVEMENT
- CONCRETE
- INTERLOCK
- LANDSCAPE

KEY PLAN



No.	DATE	REVISION
2	APR 25-24	ISSUED FOR APPROVAL
1	APR 4-24	ISSUED FOR COORDINATION

D. B. GRAY ENGINEERING INC.
 Structural/Manager - Grading & Drainage - Storm & Sanitary Sewers - Watermain
 700 Long Point Circle
 Ottawa, Ontario
 d.gray@dbgrayengineering.com
 613-425-8044

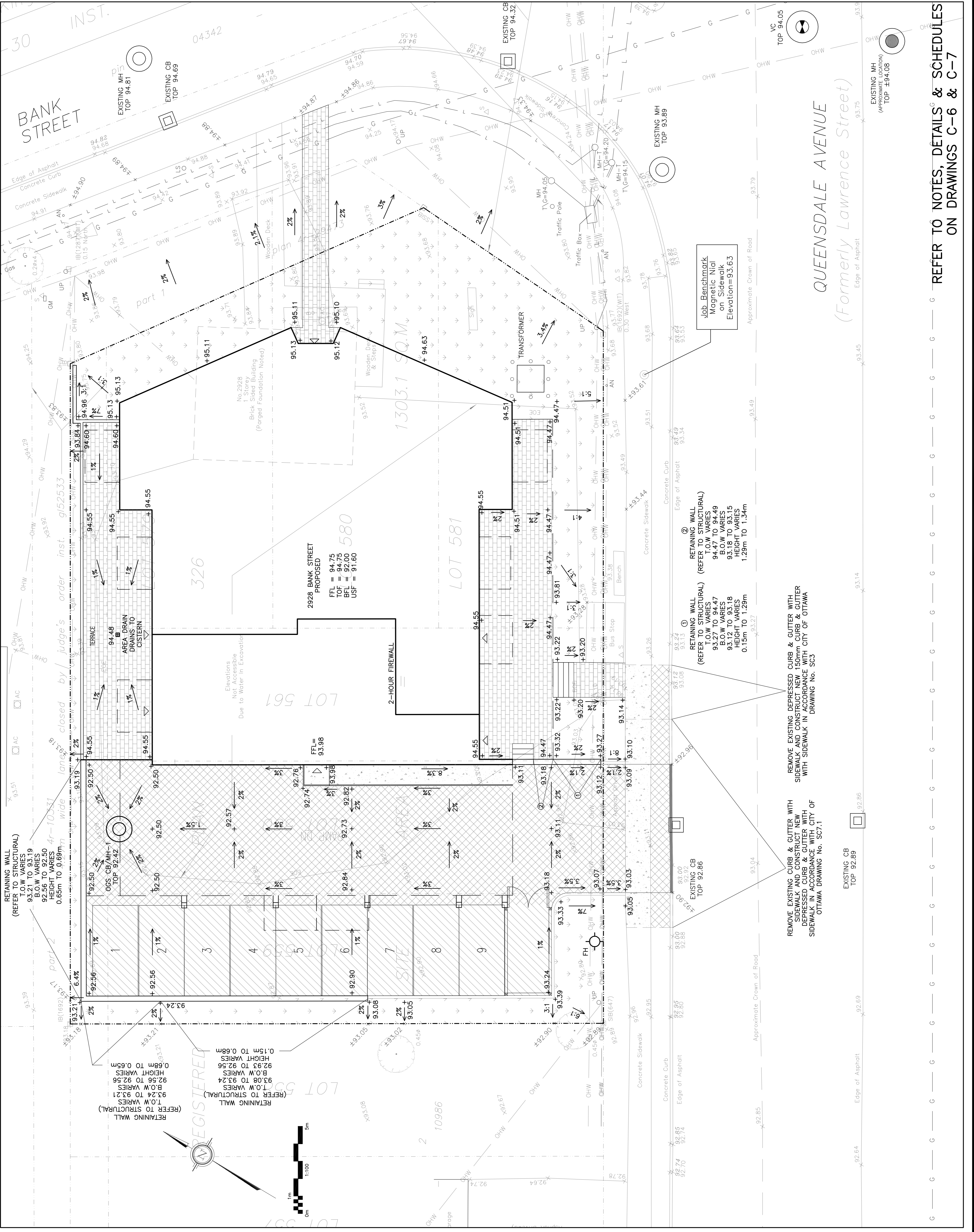
PROPOSED 4-STORY APARTMENT BUILDING
 2928 BANK STREET
 OTTAWA, ONTARIO

GRADING PLAN

Engineer's Seal
 D.B. GRAY
 17016502
 APR 26-24

Drawn: D.B.G. 1:100
 H. Scale: 1:100
 V. Scale: 1:100
 Date: MAR 22-24
 Job No.: 23019

Drawing No.: **C-3** of 8
 NOT VALID UNLESS SIGNED & DATED



REFER TO NOTES, DETAILS & SCHEDULES ON DRAWINGS C-6 & C-7

QUEENSDALE AVENUE
 (Formerly Lawrence Street)

