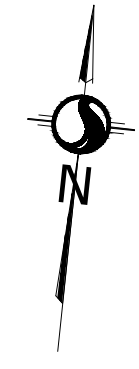


April 18, 2024

PART 1 4R-1043
PIN 04189 - 0272
PARK LAND
(LAND OWNED BY CITY)



PART 1 4R-1043
PIN 04189 - 0272
PARK LAND
(LAND OWNED BY CITY)



DRAFT PLAN OF SUBDIVISION
PART OF LOT 20
JUNCTION GORE
(GEOGRAPHIC TOWNSHIP OF GLOUCESTER)
CITY OF OTTAWA

Scale 1:500
0 10 20 30 METRES

METRIC CONVERSION
DISTANCES AND COORDINATES SHOWN ON THIS PLAN ARE IN METRES AND CAN BE CONVERTED TO FEET BY DIVIDING BY 0.3048

ADDITIONAL INFORMATION REQUIRED UNDER SECTION 51 OF THE PLANNING ACT.

- (A)-AS SHOWN ON DRAFT PLAN
- (B)-AS SHOWN ON DRAFT PLAN
- (C)-AS SHOWN ON DRAFT AND KEY PLANS
- (D)-RESIDENTIAL, COMMERCIAL, INSTITUTIONAL AND MIXED USE
- (E)-AS SHOWN ON DRAFT PLAN
- (F)-AS SHOWN ON DRAFT PLAN
- (G)-AS SHOWN ON DRAFT PLAN
- (H)-MUNICIPAL PIPED WATER SERVICE
- (I)-SOIL CONDITIONS VARY ACROSS THE SITE. SEE PRELIMINARY GEOTECHNICAL INVESTIGATION REPORT PREPARED BY STATTEC CONSULTING LTD., NOVEMBER 2023
- (J)-AS SHOWN ON DRAFT PLAN
- (K)-MUNICIPAL PIPED WATER, SANITARY, AND STORMWATER SERVICES
- (L)-AS SHOWN ON DRAFT PLAN

LAND USE

AREA OF BLOCKS (2,3,5,7,8,9 & 10)	=	4.910 Hectares 12.132 (Acres)
AREA OF STREETS (1,2 & 3)	=	1.320 Hectares 3.262 (Acres)
AREA OF ROAD WIDENING	=	0.102 Hectares 0.252 (Acres)
AREA OF SWIM CORRIDOR	=	0.724 Hectares 1.789 (Acres)
AREA OF PARK BLOCK	=	0.262 Hectares 0.647 (Acres)
TOTAL AREA OF SUBDIVISION	=	7.318 Hectares 18.083 (Acres)

OWNER'S CERTIFICATE

WE HEREBY AUTHORIZE STATTEC GEOMATICS LTD. TO SUBMIT THIS DRAFT PLAN OF SUBDIVISION ON MY BEHALF

DATE _____
Tara Dismore, Vice President
Real Estate (National Capital Region,
Atlantic and Acquisitions)
Canada Lands Company CLC Limited
I have the authority to bind the corporation.

DATE _____
Mary Jarvis, Senior Director
Real Estate (National Capital Region, Atlantic
Canada Lands Company CLC Limited
I have the authority to bind the corporation.

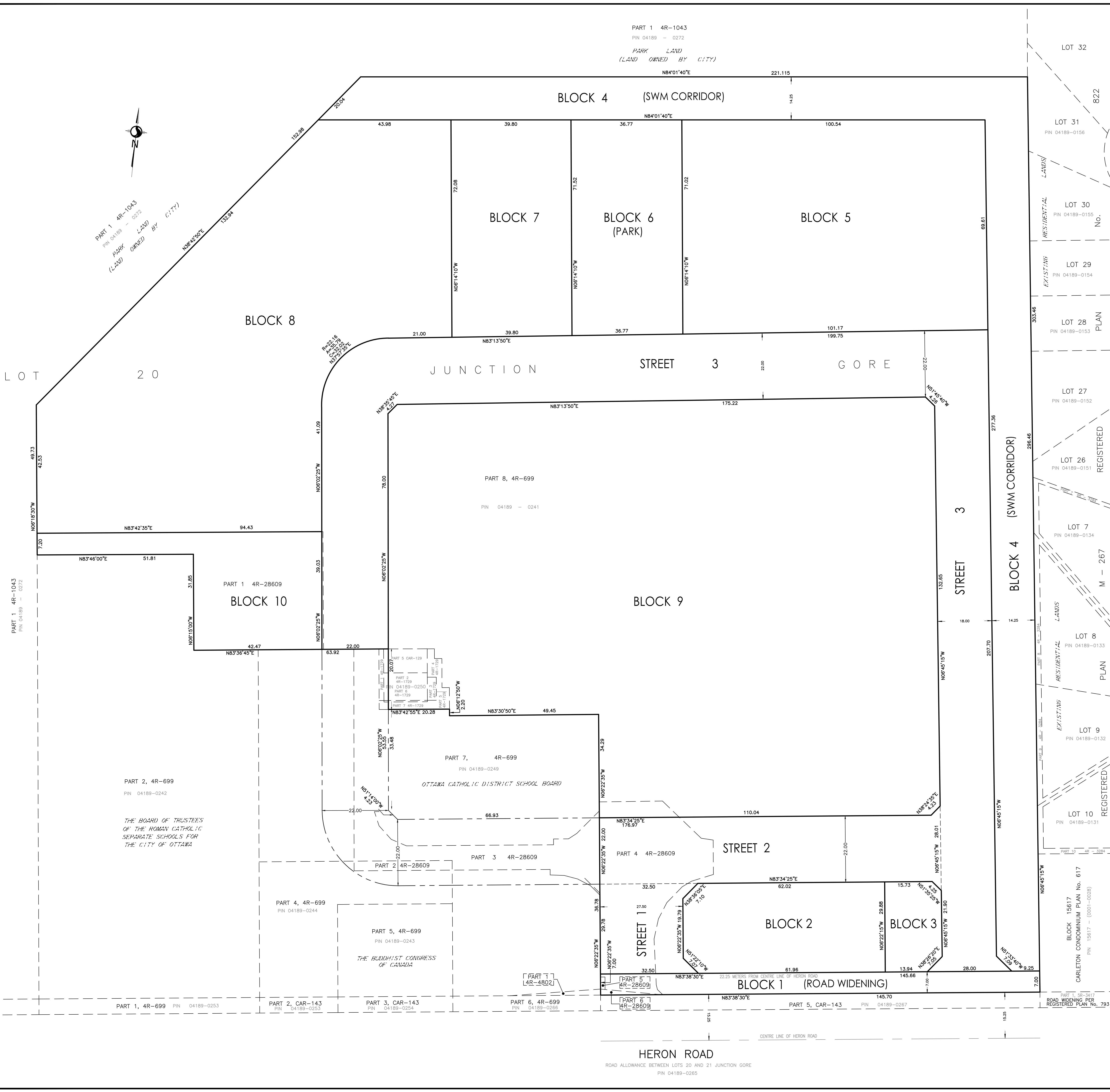
SURVEYOR'S CERTIFICATE

I HEREBY CERTIFY THAT THE BOUNDARIES OF THE SUBJECT LANDS AND THEIR RELATIONSHIP TO ADJOINING LANDS HAVE BEEN ACCURATELY AND CORRECTLY SHOWN.

April 18, 2024
DATE
R. G. BENNETT
ONTARIO LAND SURVEYOR

Stantec Geomatics Ltd.
CANADA LANDS SURVEYORS
ONTARIO LAND SURVEYORS
1311 CLOVIS AVENUE, SUITE 300
OTTAWA, ONTARIO, K2C 3E4
TEL: 613.722.4622
stantec.com

DRAWN: ME CHECKED: GB DATE: JANUARY 15, 2024 PROJECT: 160410368-131



HERON ROAD

ROAD ALLOWANCE BETWEEN LOTS 20 AND 21 JUNCTION GORE
PIN 04189-0255

THE BOARD OF TRUSTEES
OF THE ROMAN CATHOLIC
SEPARATE SCHOOLS FOR
THE CITY OF OTTAWA

OTTAWA CATHOLIC DISTRICT SCHOOL BOARD

THE BUDDHIST CONGRESS
OF CANADA

BLOCK 15617
CARLETON CONDOMINIUM PLAN No. 617
PIN 15617 - (0001-0026)

PART 1, 50-3417
ROAD WIDENING PER
REGISTERED PLAN No. 793