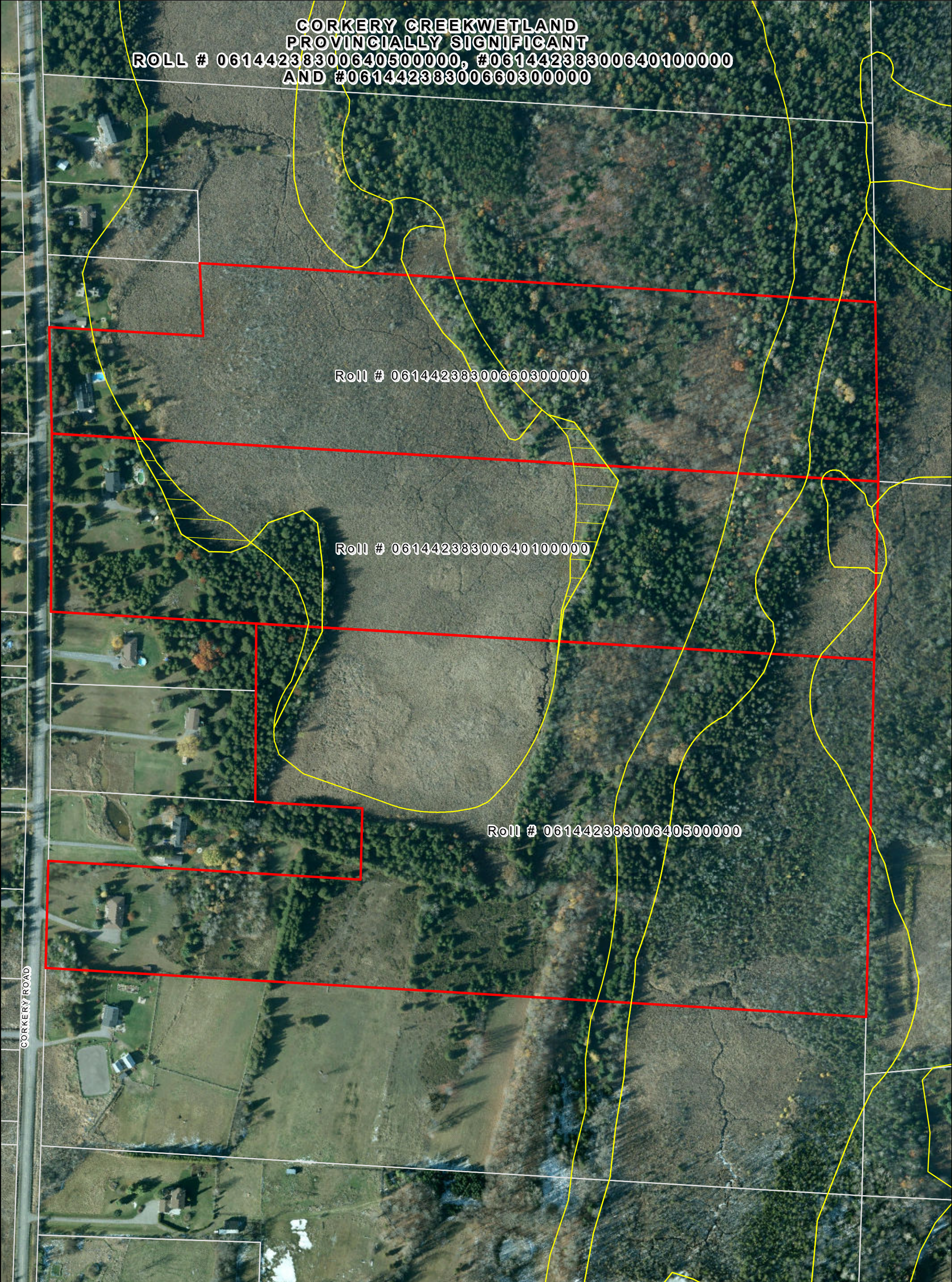


**CORKERY CREEKWETLAND
PROVINCIALY SIGNIFICANT
ROLL # 06144238300640500000, #06144238300640100000
AND #06144238300660300000**



Roll # 06144238300660300000

Roll # 06144238300640100000

Roll # 06144238300640500000

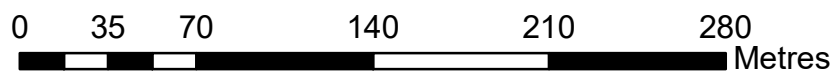
CORKERY ROAD



- Legend**
- Corkery Creek Wetland
 - Wetland Additions
 - Subject Properties
 - Parcel Fabric



Scale 1:3,000 (approx.)



SOURCE OF INFORMATION

Information provided by the Ministry of Natural Resources & Forestry district office in Kemptville, Ministry of Natural Resources & Forestry - Kemptville District 10 Campus Dr, KEMPTVILLE, ON K0G 1J0

PUBLICATION

© King's Printer for Ontario
Printed in Ontario, Canada
November 14, 2022

Cartography by Aurora District Geomatics.

Universal Transverse Mercator (6 degree) projection, Zone 17, North American Datum 1983

Base information derived from the Ontario Base Map, 1983 at a scale of 1:10,000 and the Natural Resources Values Information System (NRVIS).

NOTE

The information displayed on this map has been compiled from various sources. While every effort has been made to accurately depict the information, this map should be viewed as illustrative only. Do not rely on it as being a precise indicator of routes, locations of features, nor as a guide to navigation.

For detailed information on natural features such as their location, size or status, the individual files held by the Kemptville district office of the Ministry of Natural Resources & Forestry should be consulted.

Imagery capture date Spring 2018 copyright, J.D. Barnes
May Not be Reproduced without Permission. THIS IS NOT A PLAN OF SURVEY