

Distance Note

Distances shown on this plan are ground distances and can be converted to grid distances by multiplying by the combined scale factor of 0.99994.

Bearing Note

Bearings are grid, derived from the southerly limit of Withrow Avenue having a bearing of N 58° 32' 15" E as shown on Registered Plan 375 and are referred to the Central Meridian of MTM Zone 9 (76° 30' West Longitude) Nad-83 (Original).

Elevation Notes

- 1. Elevations shown are geodetic and are referred to Geodetic Datum CGVD-1928-1978.
2. Elevations derived from Control Monument No.3702, Index No.67 having a published elevation of 96.951m.
3. It is the responsibility of the user of this information to verify that the job benchmark has not been altered or disturbed and that its relative elevation and description agrees with the information shown on this drawing.

Utility Notes

- 1. This drawing cannot be accepted as acknowledging all of the utilities and it will be the responsibility of the user to contact the respective utility authorities for confirmation.
2. Only visible surface utilities were located.
3. Underground utility data derived from City of Ottawa utility sheet reference: L-04-12, L-04-06 and drawings 6521 (Sheet 3 of 3), 10151 (Sheet 9 of 36), 10158 (Sheet 8 of 34) & No. 11310.
4. Sanitary and storm sewer grades inverts were derived from field measurement. Sanitary and storm sewer inverts were compiled from City of Ottawa.
5. A field location of underground plant by the pertinent utility authority is mandatory before any work involving breaking ground, probing, excavating etc.

Notes & Legend

Table with 3 columns: Symbol, Description, and Notes. Includes symbols for Survey Monument, Undergound Cable, Bell Terminal Box, etc.

TOPOGRAPHIC PLAN OF SURVEY OF

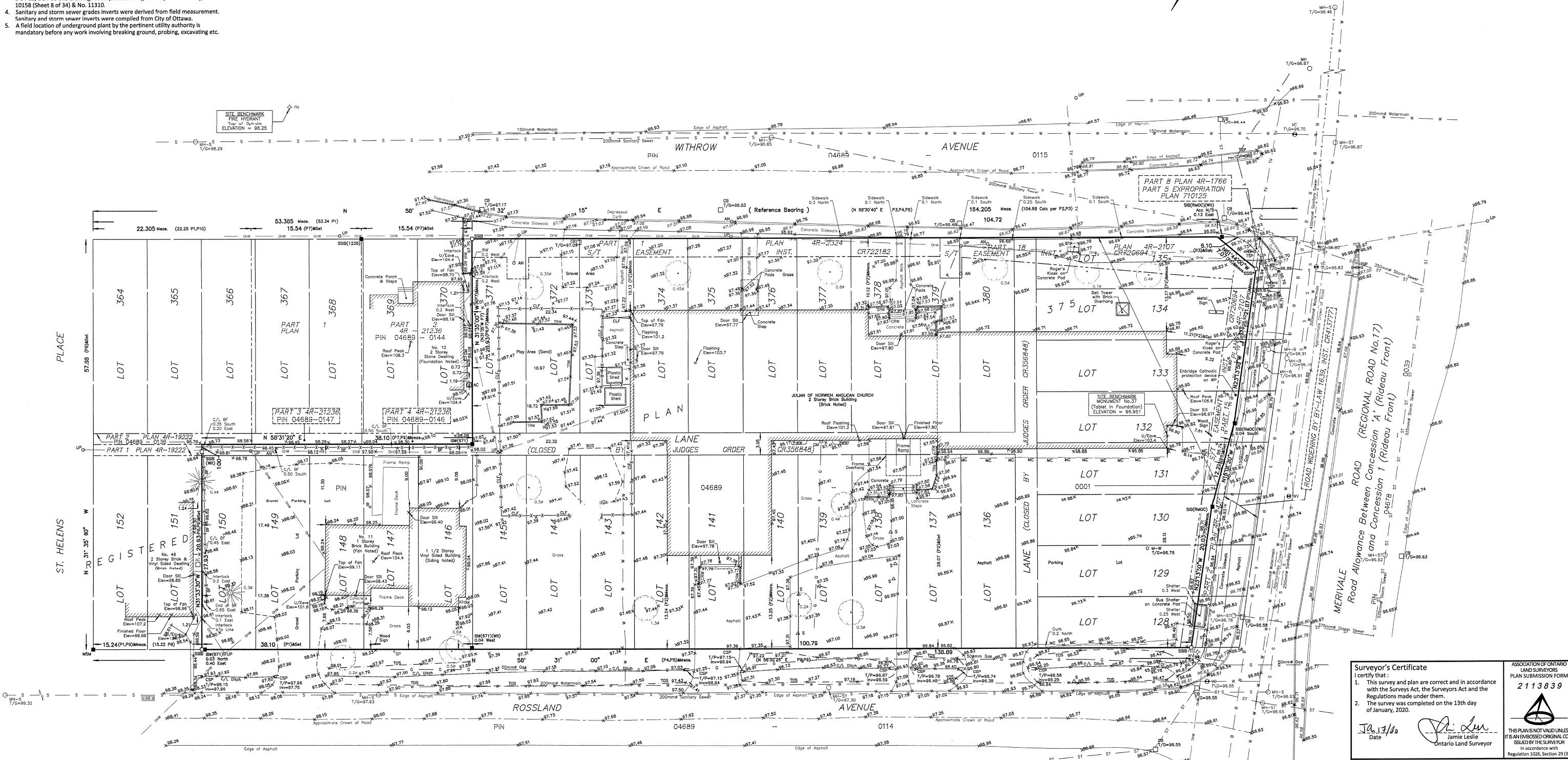
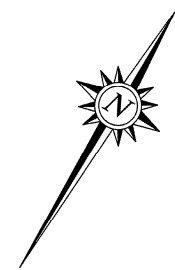
LOTS 136 TO 150 (BOTH INCLUSIVE), LOTS 371 TO 380 (BOTH INCLUSIVE), PART OF LOTS 128 TO 135 (BOTH INCLUSIVE) AND PART OF THE LANE (Closed by Judge's Order CR356848) REGISTERED PLAN 375 CITY OF OTTAWA

FARLEY, SMITH & DENIS SURVEYING LTD. 2020

Scale 1: 250

Metric Note

Distances on this plan are in metres and can be converted to feet by dividing by 0.3048.



TOPOGRAPHIC DATA WAS COLLECTED UNDER WINTER CONDITIONS. SNOW COVER AND ICE PRECLUDE DETERMINING LOCATION AND ELEVATION OF SOME TOPOGRAPHICAL DATA THAT IS OTHERWISE VISIBLE.

WARNING: NO PERSON MAY COPY, REPRODUCE, DISTRIBUTE OR ALTER THIS PLAN IN WHOLE OR IN PART WITHOUT THE WRITTEN PERMISSION OF FARLEY, SMITH & DENIS SURVEYING LTD.

Surveyor's Certificate section containing a declaration of accuracy, the date (Jan 13/20), the surveyor's name (Jamie Leslie), and the firm name (Farley, Smith & Denis Surveying Ltd.).

Association of Ontario Land Surveyors logo and contact information for Farley, Smith & Denis Surveying Ltd., including address and phone numbers.