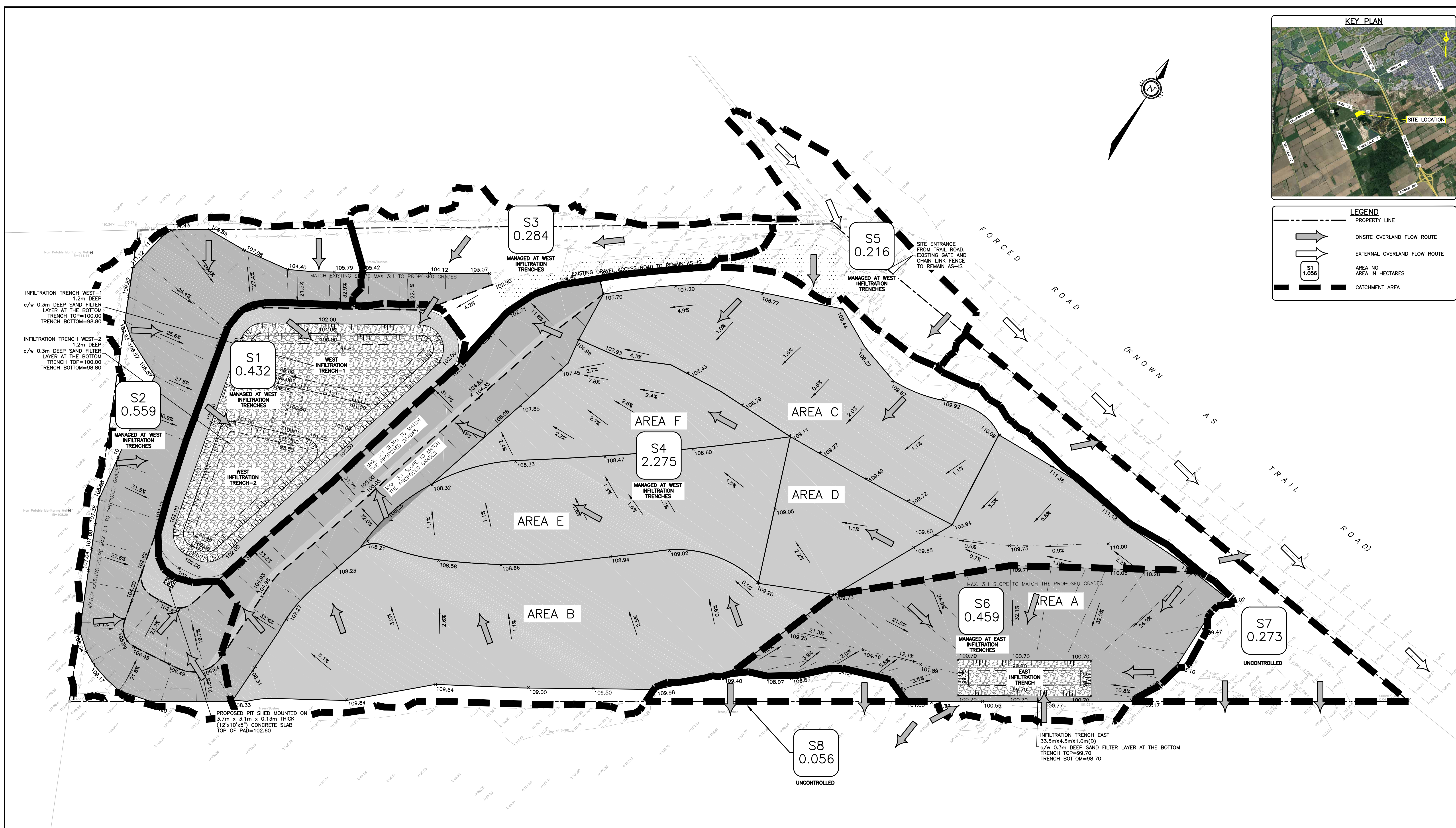


**LEGEND**

- PROPERTY LINE
- ONSITE OVERLAND FLOW ROUTE
- EXTERNAL OVERLAND FLOW ROUTE
- S1 1.056 AREA NO. AREA IN HECTARES
- CATCHMENT AREA



**NOT FOR CONSTRUCTION**

**CAUTION**  
THE POSITION OF ALL POLE LINES, CONDUITS, WATERMANS, SEWERS AND OTHER UNDERGROUND AND OVERGROUND UTILITIES AND STRUCTURES IS NOT NECESSARILY SHOWN ON THE CONTRACT DRAWINGS, AND WHERE SHOWN, THE ACCURACY OF THE POSITION OF SUCH UTILITIES AND STRUCTURES IS NOT GUARANTEED. BEFORE STARTING WORK, DETERMINE THE EXACT LOCATION OF ALL SUCH UTILITIES AND STRUCTURES AND ASSUME ALL LIABILITY FOR DAMAGE TO THEM.

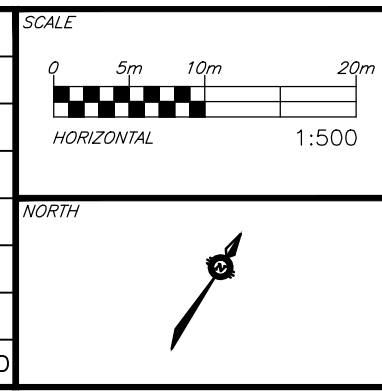
**JOB BENCH MARK**  
CP IN UTILITY POLE ELEVATION = 111.79

**TOPOGRAPHIC INFORMATION**  
PART OF LOT 8, CONCESSION 4 (RIDEAU FRONT), GEOGRAPHIC TOWNSHIP OF NEPEAN, CITY OF OTTAWA.

**Bearing Note**  
Bearings hereon are grid bearings derived from the Can-Net Real Time Network and are referred to the Central Meridian of MTM Zone 9 (76°30' West Longitude) Nad=83 (Original).

**Elevation Notes**  
Elevations shown are geodetic and are referred to Geodetic Datum CGVD-1928:1978. (Monument No. 19770866)

REV	REVISION DESCRIPTION	DATE	BY	APPD
3	RE-ISSUED FOR SPA	19/12/23	AGJ	AA
2	ISSUED FOR SPA	23/06/23	AJ	AA
1	ISSUED FOR CLIENT REVIEW	20/10/22	AJ	AA



**CLIENT**  
DRAIN-ALL LTD  
3385 HAWTHORNE ROAD, OTTAWA, ON.  
K1G 4G2 613.739.1070

**exp.**  
exp Services Inc.  
1-877-668-1899 | 1-613-225-7330  
1025 Queen Street East, Unit 100  
Ottawa, ON K2B 8K6  
Canada  
www.exp.com

• BUILDINGS • EARTH & ENVIRONMENT • ENERGY •  
• INDUSTRIAL • INFRASTRUCTURE • SUSTAINABILITY •

PROJECT	ENGINEERING SERVICES FOR 4380 TRAIL ROAD, OTTAWA, ONTARIO.	PROJECT NO. OTT-21023795-A0
BASEPLAN	AJ	
DESIGN	AJ	
CHECKED	AA	
CAD	AJ	
PROJECT MANAGER	AA	
APPROVED	AA	
TITLE	POST-DEVELOPMENT CATCHMENTS	DRAWING NO. C500
DATE	27/04/2022	

DOT-12-23-0066 #27222