

OSQ Series

OSQ™ LED Area/Flood Luminaire featuring Cree TrueWhite® Technology - Medium & Large

Rev. Date: V6 05/21/2022

Product Description

The OSQ™ Area/Flood luminaire blends extreme optical control, advanced thermal management and modern, clean aesthetics. Built to last, the housing is rugged cast aluminum with an integral, weatheright LED driver compartment. Versatile mounting configurations offer simple installation. Its slim, low-profile design minimizes wind load requirements and blends seamlessly into the site providing even, quality illumination. The 4L lumen package is a suitable upgrade for HID applications up to 250 Watts, and the 11L lumen package is a suitable upgrade for HID applications up to 400 Watts. The 22L lumen package is a suitable upgrade for HID applications up to 750 Watts, and the 30L lumen package is a suitable upgrade for HID applications up to 1000 Watts.

Applications: Parking lots, walkways, campuses, car dealerships, office complexes, tunnels, underpasses, and internal roadways.

Performance Summary

Utilizes Cree TrueWhite® Technology on 5000K Luminaires

NanoOptic® Precision Delivery Grid™ optic

Assembled in the USA by Cree Lighting from US and imported parts

Initial Delivered Lumens: 4,000 - 30,000

Efficacy: Up to 173 LPW

CRI: Minimum 70 CRI (3000K, 4000K & 5700K); 90 CRI (5000K)

CCT: 3000K, 4000K, 5000K, 5700K

Limited Warranty: 10 years on luminaire; 10 years on Colorfast DeltaGuard® finish; up to 5 years for Synapse® accessories; 1 year on luminaire accessories

*See [www.creeledighting.com](#) for warranty terms. For Synapse accessories, consult Synapse spec sheets for details on warranty terms.

Ordering Information

Fully assembled luminaire is composed of two components that must be ordered separately:

Example: **Mount:** OSQ-ML-B-AJ-BK • **Luminaire:** OSQ-M-B-4L-30K-2M-UL-NM-BK

Mount (Luminaire must be ordered separately)*

OSQ-

OSQ-ML-B-AA Adjustable Arm

OSQ-ML-B-DA Direct Arm

OSQ-ML-B-TSP Transportation Mount (stainless steel, do not specify color)

OSQ-ML-B-TM Turret Mount

*Reference EPL and pole configuration suitability data beginning on page 10

Luminaire (Mount must be ordered separately)

Family	Size	Series	Lumen Package*	CCT/CRI	Optic	Mount	Color Options	Controls**	Options
OSQ	Medium	30K	2M	Asymmetric	UL	NM	BK	PML Programmable Multi-Level, up to 47° Mounting Height	F Fuse
			3M	Universal	UM	Black	Refer to PML spec sheet for details	Replaces standard 150V/50A surge protection	
			4M	Universal	UM	Bronze	Refer to PML spec sheet for details	Compatible with 120V, 277V or 347V (phase to neutral) (ignore to ground)	
		4L	3M	Universal	UM	Black	Refer to PML spec sheet for details	Consult factory if housing is required for 208V, 240V or 480V (ignore to ground)	
			4M	Universal	UM	Bronze	Refer to PML spec sheet for details	When code 480V is required, use the delay fuse	
			4M	Universal	UM	White	Refer to PML spec sheet for details	Refer to PML spec sheet for details	
	Large	500K	3M	Asymmetric	UL	NM	BK	PML2 Programmable Multi-Level, 10-30° Mounting Height	R
			4M	Universal	UM	Black	Refer to PML2 spec sheet for details	Refer to PML2 spec sheet for details	
			4M	Universal	UM	Bronze	Refer to PML2 spec sheet for details	Refer to PML2 spec sheet for details	
		11L	3M	Asymmetric	UL	NM	BK	PML2 Programmable Multi-Level, 10-30° Mounting Height	R
			4M	Universal	UM	Black	Refer to PML2 spec sheet for details	Refer to PML2 spec sheet for details	
			4M	Universal	UM	Bronze	Refer to PML2 spec sheet for details	Refer to PML2 spec sheet for details	
22L	3M	Asymmetric	UL	NM	BK	PML2 Programmable Multi-Level, 10-30° Mounting Height	R		
	4M	Universal	UM	Black	Refer to PML2 spec sheet for details	Refer to PML2 spec sheet for details			
	4M	Universal	UM	Bronze	Refer to PML2 spec sheet for details	Refer to PML2 spec sheet for details			

*Lumen Package codes identify approximate light output only. Actual lumen output levels vary by CCT and optic selection. Refer to Initial Delivered Lumen tables for specific lumen values

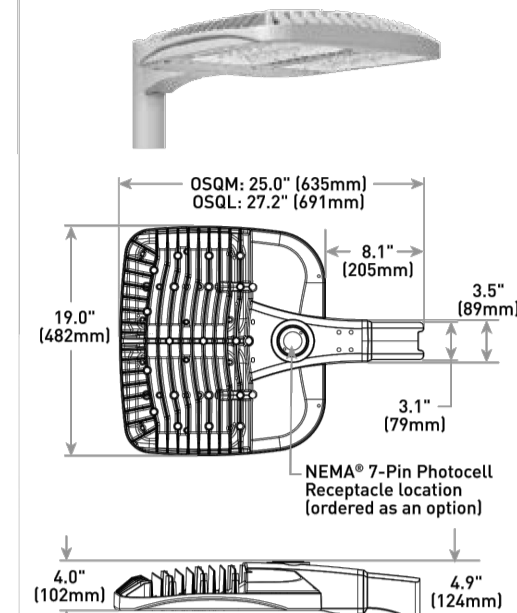
**Available with Backlight Shield when ordered with field-installed accessory (see table on page 12)

**Luminaire comes standard with 0-10V dimming

US: creeledighting.com (800) 236-6800

Canada: creeledighting-canada.com (800) 473-1234

OSQ-ML-B-DA Mount



Luminaire	Weight
OSQM	28.9 lbs. (13.1kg)
OSQL	32.4 lbs. (14.7kg)

Note: Refer to page 11 for feature mounting/dim pattern. For additional mounts, refer to drawings beginning on page 19

Color Options: SV Silver, BZ Bronze, BK Black, WH White

XSP Series

XSPW™ LED Wall Mount Luminaire featuring Cree TrueWhite® Technology

Rev. Date: Version B V6 08/03/2022

Product Description

The XSPW™ LED wall mount luminaire has a slim, low profile design intended for outdoor wall mounted applications. The rugged lightweight aluminum housing and mounting box are designed for installation over standard single gang J-Boxes and mud ring single gang J-Boxes. The luminaire allows for through-wired or conduit entry from the top, bottom, sides and rear. The housing design is intended specifically for LED technology including a weatheright LED driver compartment and thermal management. Optic design features industry-leading NanoOptic® Precision Delivery Grid™ system in multiple distributions.

Applications: General area and security lighting

Performance Summary

NanoOptic® Precision Delivery Grid™ optic

Assembled in the USA by Cree Lighting from US and imported parts

Initial Delivered Lumens: Up to 8,475

CRI: Minimum 70 CRI (3000K, 4000K & 5700K); 90 CRI (5000K)

CCT: 3000K, 4000K, 5000K, 5700K

Limited Warranty: 10 years on luminaire/10 years on Colorfast DeltaGuard® finish/up to 5 years for Synapse® accessories/1 year on accessories

*See [www.creeledighting.com](#) for warranty terms

**Must specify color

Accessories

Field-Installed

Handy Plate

Hand-Mid Remotes

Synapse® SimpSnap 10V Interface

Multi-Level Sensor location (ordered as an option)

Lumen Package Weight

2L, 4L, 4L, 11.0 lbs. (5.0kg)

BL 11.8 lbs. (5.4kg)

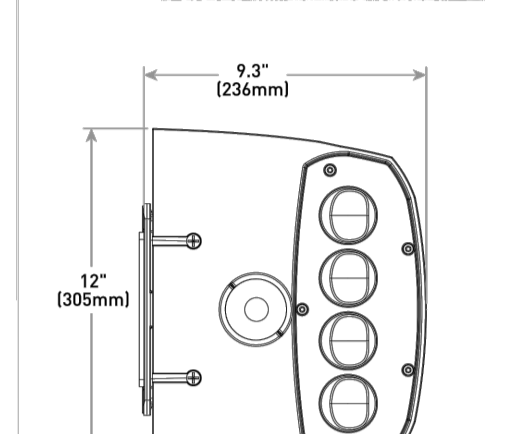
**Must specify color

Ordering Information

Example: XSPW-B-WM-2M-2L-30K-UL-BK

Product	Version	Mounting	Optic	Lumen Package*	CCT	Voltage	Color Options	Options
XSPW	B	WM	2M	2L	30K	UL	BK	ML Multi-Level
			3M	4L	400K	Black	Refer to PML spec sheet for details	
			4M	4L	400K	BZ Bronze	Available with UL voltage only	
		4L	3M	4L	400K	SV Silver	P Buttons PhotoCell	
			4M	4L	400K	WH White	Not available with ML or PML options	
			4M	4L	400K	WH White	Available with ML and 14 voltages only	
	L	WM	2M	2L	30K	UL	BK	ML Multi-Level
			3M	4L	400K	Black	Refer to PML spec sheet for details	
			4M	4L	400K	BZ Bronze	Available with UL voltage only	
		4L	3M	4L	400K	SV Silver	P Buttons PhotoCell	
			4M	4L	400K	WH White	Not available with ML or PML options	
			4M	4L	400K	WH White	Available with ML and 14 voltages only	

*Lumen Package selection codes identify approximate light output only. Actual lumen output levels may vary depending on CCT and optic selection. Refer to Initial Delivered Lumen tables for specific lumen values



Lumen Package	Weight
2L, 4L, 4L	11.0 lbs. (5.0kg)
BL	11.8 lbs. (5.4kg)

**Must specify color

FIXTURE TYPES: ZL-2-11L-5Q
ZL-1-11L-3M

FIXTURE TYPES: WL-1-6L-4ME
WL-1-2L-2ME
WL-1-4L-4ME
WL-1-2L-4ME

Label	Type	Wall Ht.
Bldg A	Polygon-Flat	18
Bldg B	Polygon-Flat	18
Bldg C	Polygon-Flat	18
Bldg D	Polygon-Flat	18
Bldg E	Polygon-Flat	18
Bldg F	Polygon-Flat	18

LumNo	Label	X	Y	Z	Orient	Tilt
1	ZL-2-11L-5Q	370.071	477.051	23.0	90	0
2	ZL-2-11L-5Q	460.334	476.981	23.0	90	0
3	ZL-2-11L-5Q	541.119	476.953	23.0	90	0
4	ZL-1-11L-3M	281.82	459.85	23.0	127.145	0
6	WL-1-4L-4ME	277.5	504.102	15	0	0
7	WL-1-4L-4ME	277.5	554.102	15	0	0
8	WL-1-4L-4ME	277.5	604.102	15	0	0
9	WL-1-6L-4ME	309.472	548.298	15	270	0
10	WL-1-4L-4ME	359.472	548.298	15	270	0
11	WL-1-4L-4ME	409.472	548.298	15	270	0
12	WL-1-4L-4ME	459.472	548.298	15	270	0
13	WL-1-6L-4ME	509.472	548.298	15	270	0
14	WL-1-4L-4ME	557.265	533.637	15	270	0
15	WL-1-4L-4ME	607.948	533.637	15	270	0
16	WL-1-4L-4ME	615.674	498.203	15	180.444	0
17	WL-1-4L-4ME	615.629	446.412	15	180	0
18	WL-1-4L-4ME	537.34	405.57	15	90	0
32	WL-1-4L-4ME	582.34	405.57	15	90	0
33	WL-1-4L-4ME	627.34	405.57	15	90	0
34	WL-1-4L-4ME	672.34	405.57	15	90	0
36	WL-1-6L-4ME	351.071	405.83	15	90	0
37	WL-1-4L-4ME	401.071	405.83	15	90	0
38	WL-1-4L-4ME	451.071	405.83	15	90	0
39	WL-1-4L-4ME	501.071	405.83	15	90	0
40	WL-1-4L-4ME	546.609	405.315	15	90	0
41	WL-1-2L-2ME	515.7	391.352	15	0	0
42	WL-1-2L-2ME	340.93	385.342	15	180	0
43	WL-1-2L-2ME	522.64	570.312	15	0	0
44	WL-1-2L-2ME	305.264	591.454	15	90	0
46	WL-1-2L-2ME	255.851	607.161	15	90	0
47	WL-1-2L-2ME	231.715	515.179	15	180	0
58	WL-1-2L-2ME	231.715	590.179	15	180	0
59	WL-1-2L-2ME	680.234	385.089	15	0	0
60	WL-1-2L-2ME	661.355	447.519	15	0	0
61	WL-1-2L-2ME	661.355	498.148	15	0	0
62	WL-1-2L-2ME	621.88	548.563	15	0	0
63	WL-1-2L-2ME	608.794	575.38	15	39.806	0
64	WL-1-2L-2ME	567.389	589.539	15	90	0
68	WL-1-2L-2ME	375.264	591.454	15	90	0
69	WL-1-2L-2ME	445.264	591.454	15	90	0
70	WL-1-2L-2ME	515.264	591.454	15	90	0
71	WL-1-2L-4ME	255.684	501.433	15	270	0
72	WL-1-2L-2ME	374.376	362.232	15	270	0
73	WL-1-2L-2ME	439.763	362.232	15	270	0
74	WL-1-2L-2ME	507.196	361.986	15	270	0
75	WL-1-2L-2ME	580.276	362.015	15	270	0
76	WL-1-2L-2ME	647.709	362.015	15	270	0

Symbol	Qty	Label	Arrangement	LLF	Description	Lum. Watts	Lum. Lumens
□	3	ZL-2-11L-5Q	BACK-BACK	0.900	CREE LIGHTING CAT. #OSQM-B-11L-40K7-5Q-UH	72	11950
□	1	ZL-1-11L-3M	SINGLE	0.900	CREE LIGHTING CAT. #OSQM-B-11L-40K7-3M-UH	72	11175
□	3	WL-1-6L-4ME	SINGLE	0.900	CREE LIGHTING CAT. #XSPW-B-WM-4ME-6L-40K-UH	47	6100
□	21	WL-1-2L-2ME	SINGLE	0.900	CREE LIGHTING CAT. #XSPW-B-WM-2ME-2L-40K-UH	19	2490
□	18	WL-1-4L-4ME	SINGLE	0.900	CREE LIGHTING CAT. #XSPW-B-WM-4ME-4L-40K-UH	31	4270
□	1	WL-1-2L-4ME	SINGLE	0.900	CREE LIGHTING CAT. #XSPW-B-WM-4ME-2L-40K-UH	19	2490

Label	CalcType	Units	Avg	Max	Min	Avg/Min	Max/Min
spill East, North, West	Illuminance	Fc	0.13	1.3	0.0	N.A.	N.A.
spill South	Illuminance	Fc	0.53	1.7	0.0	N.A.	N.A.
within property lines	Illuminance	Fc	2.01	5.1	0.1	20.10	51.00

REVISIONS AND DISTRIBUTION LOG

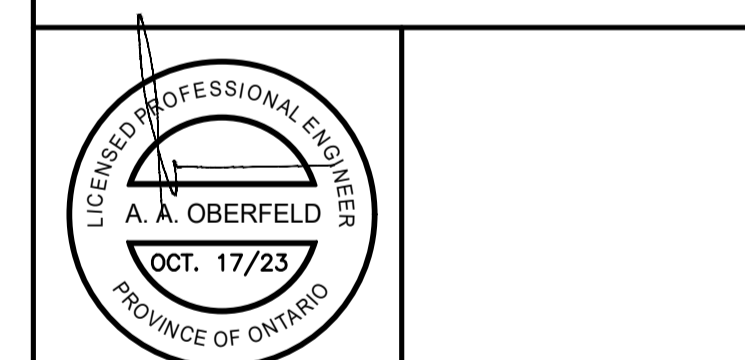
No.	Date	Note
1	JUNE 19/23	ISSUED FOR S.P.A.
2	OCT.17/23	RE-ISSUED FOR S.P.A.
3	FEB.20/24	REVISED FOR SPC SUBMISSION

ALL DRAWINGS ARE THE PROPERTY OF THE ARCHITECT AND MUST BE RETURNED ON REQUEST.

THE CONTRACTOR SHALL CHECK ALL DIMENSIONS AND REPORT DISCREPANCIES TO THE ARCHITECT.

ALL DIMENSIONS ARE GIVEN IN MILLIMETRES UNLESS OTHERWISE INDICATED.

DO NOT SCALE DRAWINGS.



Division of 1041549 Ontario Limited
8901 Woodbine Avenue, Unit #116
Markham, Ontario
Canada, L3R 9Y4
(905) 604-3801
Fax (905) 604-3804

Project:
COMMERCIAL DEVELOPMENT BUILDINGS 'A', 'B', 'C', 'D', 'E' & 'F'

3095 Palladium Drive
Ottawa Ontario

Drawing Title:
BUILDINGS A, B, C, D, E & F DETAILS

Drawn By: J.Y. Checked By: J.P. Date Checked: JUN. 2023 Project No: 2023-088

Date Plotted: Scale: 1:400

Drawing No.: **LE-1A** Revision No.: 19021
D02-02-23-0058 & D07-12-23-0092

CPY500™ Series

CPY500™ LED Recessed Canopy, Car Wash, Hook & Cord or Pendant Mount Luminaire

Rev. Date: V7 09/25/2023

Product Description

The CPY500™ Series LED luminaire features a large 11" X 11" glass optic that delivers the best in visual comfort and performance. Diffused optics minimize glare and increase visual comfort while delivering top-of-category 175 LPW efficiency and high-performance light distribution. Its sleek and low-profile form blends into the canopy while still being easily serviceable from below. Additional car wash, hook & cord and pendant mounts provide a consistent aesthetic for different applications within a site.

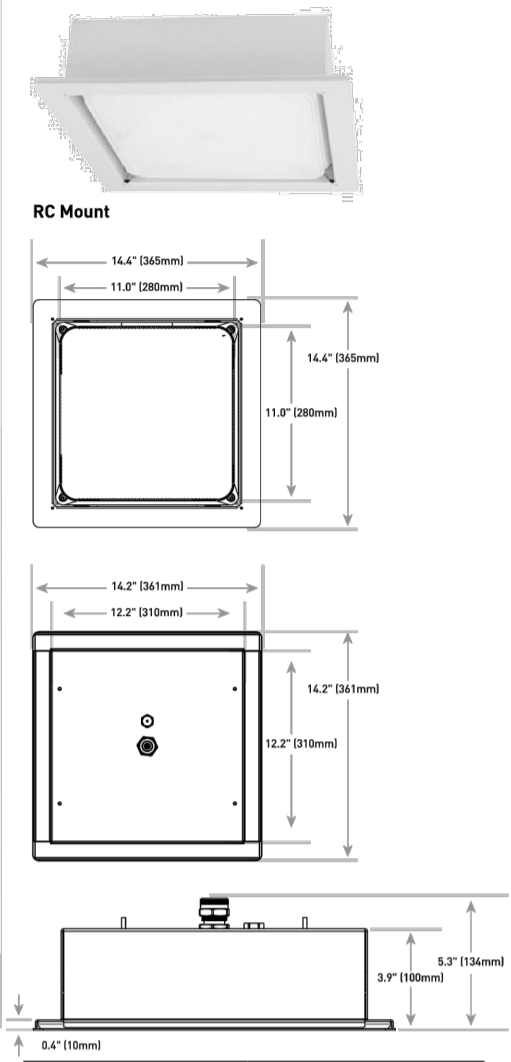
Applications: Petroleum canopies, CNG fueling stations, convenience stores, drive-thru banks and restaurants, retail and grocery

Performance Summary

- Assembled in the USA by Cree Lighting from US and imported parts
- Initial Delivered Lumens:** Up to 20,900
- Efficacy:** Up to 175 LPW
- CR:** Minimum 70 CRI (40K, 50K, 57K); 80 CRI (30K); 90 CRI (40K, 50K)
- CCT:** 3000K, 4000K, 5000K, 5700K
- Limited Warranty*:** 10 years on luminaire/10 years on Colorfast DeltaGuard® finish/up to 5 years for Synapse® accessories/1 year on field-installed accessories
- IP66 optics/IP66 driver housing
- Class I, Division 2 Hazardous Location for select models
- *See <http://www.cree.com/warranty> for warranty terms

Accessories

- Field-Installed Accessories**
- Synapse® SimplySnap 10V Interface** (SM10-220V)
 - 120V-277V
 - Requires other Synapse components to complete system
 - Refer to 03113-220V spec sheet for details
 - Pendant Mount Kit for use with PD Mount** (XA-PS1207) - 1" (27mm) pendant
 - XA-PS1807** - 1 1/2" (38mm) pendant
 - XA-PS2207** - 1" (25mm) pendant
 - Includes two standard fittings and 3/16" NPT pipe threaded on two ends



Ordering Information

Example: CPY-1L-300V-DF-UL-RC-WH-10V

Product	Lumen Package*	CCT/CR	Optic	Voltage	Mounting**	Color Options	Controls (specify one)	Options
CPY	2L 4L 6L 12L 15L 20L 20L Lumens 20L Lumens	300K 3500K 4000K 5000K 5700K	DF Direct Lambertian Flathead LM Universal 347-480V RC Recessed Canopy	UL Universal 120-277V UL Universal 347-480V RC Recessed Canopy	NS Car Wash HC Hook & Cord PD Pendant RC Recessed Canopy	BK Black BZ Bronze SV Silver WH White	10V - 0-10V dimming to 100% - Not available with other controls DF Field Adjustable Output w/ 10V Dimming - Offers full range adjustability - Refer to page 5 for power and lumen values - Includes field-adjustable dim leads - Not available with 10V optics or DF option - Includes 10V dimming as standard - Not available with other controls	10KV 10KV/10A Surge Suppression Protection - Replaces standard 10KV/10A surge protection H2 Class I, Div. 2 Hazardous Location Certification - Requires use of vent terminal (not by itself) - Available only with RC mount

* Lumen Package codes identify approximate light output only. Actual lumen output levels vary depending on CCT. Refer to Delivered Lumen tables for specific lumen values.
** Direct and recessed soffits mounts are also available. Refer to <https://www.cree.com/products/indoor-canopy-and-wall/> for spec sheets for these additional mounts.
*** Luminaire comes standard with 0-10V dimming



CREE LIGHTING

OSQ Series

OSQ™ LED Area/Flood Luminaire featuring Cree TrueWhite® Technology - Medium & Large

Rev. Date: V6 05/31/2022

Product Description

The OSQ™ Area/Flood Luminaire blends extreme optical control, advanced thermal management and modern, clean aesthetics. Built to last, the housing is rugged cast aluminum with an integral, weatherlight LED driver compartment. Versatile mounting configurations offer simple installation. Its slim, low-profile design minimizes wind load requirements and blends seamlessly into the site providing even, quality illumination. The 4L lumen package is a suitable upgrade for HID applications up to 250 Watt, and the 11L lumen package is a suitable upgrade for HID applications up to 400 Watt. The 22L lumen package is a suitable upgrade for HID applications up to 750 Watts, and the 30L lumen package is a suitable upgrade for HID applications up to 1000 Watts.

Applications: Parking lots, walkways, campuses, car dealerships, office complexes, tunnels, underpasses, and internal roadways

Performance Summary

- Utilizes Cree TrueWhite® Technology on 5000K Luminaires
- NanoOptic® Precision Delivery Grid™ optic
- Assembled in the USA by Cree Lighting from US and imported parts
- Initial Delivered Lumens:** 4,000 - 30,000
- Efficacy:** Up to 173 LPW
- CR:** Minimum 70 CRI (3000K, 4000K & 5700K); 90 CRI (5000K)
- CCT:** 3000K, 4000K, 5000K, 5700K
- Limited Warranty*:** 10 years on luminaire; 10 years on Colorfast DeltaGuard® finish; up to 5 years for Synapse® accessories; 1 year on luminaire accessories
- *See <http://www.cree.com/warranty> for warranty terms. For Synapse accessories, consult Synapse spec sheets for details on warranty terms.

Ordering Information

Fully assembled luminaire is composed of two components that must be ordered separately:
Example: Mount OSQ-ML-B-AA-BK + Luminaires OSQ-M-B-4L-30K7-2M-UL-NM-BK

Mount (Luminaire must be ordered separately)*

OSQ-ML-B-AA Adjustable Arm
OSQ-ML-B-DA Direct Arm
OSQ-ML-B-TM Transom Mount (stainless steel, do not specify color)

Color Options: SV Silver, BZ Bronze, BK Black, WH White

*Reference ERM and gate configuration suitability data beginning on page 18

Luminaire (Mount must be ordered separately)

Family	Size	Series	Lumen Package	CCT/CR	Optic	Voltage	Mount	Color Options	Controls**	Options
OSQ	Medium	4L	2000K	20K	Asymmetric	UL	NM	BK	PHL Programmable Multi-Level, up to 40'	20KV 20KV/20A Surge Suppression - Replaces standard 10KV/10A surge protection F Fuse - Compatible with 120V, 277V or 347V (phase to neutral) - Consult factory if fusing is required for 20KV, 20KV or 40KV (phase to phase) R Refer to 03113-220V for availability with PML options - When code indicates fusing, use time delay fuse N NEMA 7-Pin Photocell Receptacle - 7-pin receptacle per ANSI C136.41 - Intended for downlight applications with maximum 40" tilt - Factory connected to 10V dim-leads - 1" (25.4mm) screw-conductor cord with luminaire - Replaces photometric or shunting cord by others RL Rota-Lark - LED and optic are rotated to the left - Refer to 360RL configuration diagram on page 19 for optic directionality RR Rota-Right - LED and optic are rotated to the right - Refer to 360RL configuration diagram on page 19 for optic directionality - Not for use with symmetric optics
			3000K	30K	Universal	UL	NM	BK	PHL Programmable Multi-Level, up to 40'	
			4000K	40K	Universal	UL	NM	BK	PHL Programmable Multi-Level, up to 40'	
			5000K	50K	Universal	UL	NM	BK	PHL Programmable Multi-Level, up to 40'	
			5700K	57K	Universal	UL	NM	BK	PHL Programmable Multi-Level, up to 40'	
			90 CRI	90K	Universal	UL	NM	BK	PHL Programmable Multi-Level, up to 40'	
	Large	12L	2000K	20K	Universal	UL	NM	BK	PHL Programmable Multi-Level, up to 40'	
			3000K	30K	Universal	UL	NM	BK	PHL Programmable Multi-Level, up to 40'	
			4000K	40K	Universal	UL	NM	BK	PHL Programmable Multi-Level, up to 40'	
			5000K	50K	Universal	UL	NM	BK	PHL Programmable Multi-Level, up to 40'	
			5700K	57K	Universal	UL	NM	BK	PHL Programmable Multi-Level, up to 40'	
			90 CRI	90K	Universal	UL	NM	BK	PHL Programmable Multi-Level, up to 40'	

* Lumen Package codes identify approximate light output only. Actual lumen output levels vary by CCT and optic selection. Refer to Initial Delivered Lumen tables for specific lumen values.
** Available with Recharge (Recharge when ordered with field-installed accessory (see table on page 1))
*** Luminaire comes standard with 0-10V dimming



CREE LIGHTING

XSP Series

XSPW™ LED Wall Mount Luminaire featuring Cree TrueWhite® Technology

Rev. Date: Version B V6 08/03/2022

Product Description

The XSPW™ LED wall mount luminaire has a slim, low profile design intended for outdoor wall mounted applications. The rugged lightweight aluminum housing and mounting box are designed for installation over standard single gang J-Boxes and mud ring single gang J-Boxes. The luminaire allows for through-wire or conduit entry from the top, bottom, sides and rear. The housing design is intended specifically for LED technology including a weatherlight LED driver compartment and thermal management. Optic design features industry-leading NanoOptic® Precision Delivery Grid™ system in multiple distributions.

Performance Summary

- NanoOptic® Precision Delivery Grid™ optic
- Assembled in the USA by Cree Lighting from US and imported parts
- Initial Delivered Lumens:** Up to 8,475
- CR:** Minimum 70 CRI (3000K, 4000K & 5700K); 90 CRI (5000K)
- CCT:** 3000K, 4000K, 5000K, 5700K
- Limited Warranty*:** 10 years on luminaire/10 years on Colorfast DeltaGuard® finish/up to 5 years for Synapse® accessories/1 year on accessories
- *See <http://www.cree.com/warranty> for warranty terms

Accessories

- Field-Installed**
- Beauty Plate** WM-PL1212** - 12" (305mm) Square
WM-PL1414** - 14" (356mm) Square
- Covers holes left by incumbent wall packs
 - Synapse® SimplySnap 10V Interface** (SM10-220V)
 - 120V-277V
 - Requires other Synapse components to complete system
 - Refer to 03113-220V spec sheet for details

** Must specify color

Hand-Held Remote
AA-SENSE™
- For successful implementation of the programmable multi-level option, a minimum of one hand-held remote is required

Multi-Level Sensor Location (ordered as an option)

Lumen Package Weight
2L, 4L, 6L: 11.0 lbs. (5.0kg)
8L: 11.8 lbs. (5.4kg)

Ordering Information

Example: XSPW-B-WM-2ME-2L-30K-UL-BK

Product	Version	Mounting	Optic	Lumen Package*	CCT	Voltage	Color Options	Options
XSPW	B	WM	2ME	2L	30K	UL	BK	HL Multi-Level - Refer to 03113-220V for details - Available with UL voltage only P Button Photocell - Not available with ML or PML options - Available with UL and 24 voltages only PHL Programmable Multi-Level - Refer to PML spec sheet for details - Available with UL voltage only
XSPW	B	WM	3ME	4L	40K	UL	BK	
XSPW	B	WM	4ME	6L	50K	UL	BK	
XSPW	B	WM	5ME	8L	57K	UL	BK	

* Lumen Package selection codes identify approximate light output only. Actual lumen output levels may vary depending on CCT and optic selection. Refer to Initial Delivered Lumen tables for specific lumen values.



CREE LIGHTING

FIXTURE TYPES: F

FIXTURE TYPES: A
A2
B
B3

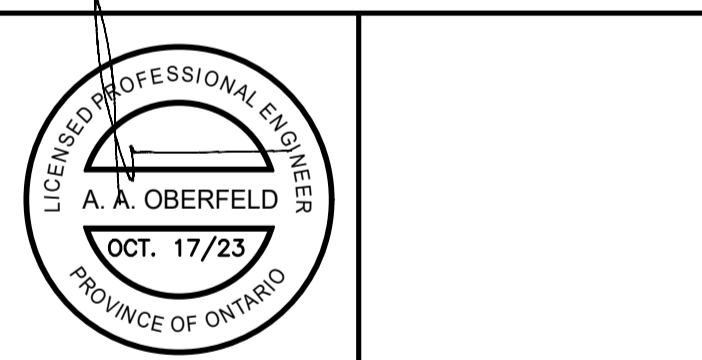
FIXTURE TYPES: D
E

- POLE MOUNTED FIXTURES ARE MOUNTED ON A 20FT POLE ATOP A 36 INCH HIGH CONCRETE BASE.

LUM. NO.	LABEL	MTG. HT.
1	A	23
2	A	23
3	A	23
4	A	23
5	A	23
6	A2	23
7	B	23
8	B	23
9	B	23
10	B3	23
11	D	11
12	D	11
13	D	11
14	D	11
15	D	11
16	D	11
17	D	11
18	E	11
19	E	11
20	E	11
21	E	11
22	F	14
23	F	14
24	F	14
25	F	14
26	F	14
27	F	14

LABEL	AVG	MAX	MIN	AVG/MIN	MAX/MIN
PAVED AREA	31.16	45	14	2.23	3.21
UNDEFINED AREA	5.13	21.9	0.2	25.65	109.50
UNDEFINED AREA	0.54	9.3	0.0	N.A.	N.A.

SYMBOL	QTY	LABEL	ARRANGEMENT	LUMENS	LLF	BUG RATING	WATTS/LUMINAIRE	TOTAL WATTS	MANUFACTURE	CATALOG LOGIC
[Symbol]	5	A	SINGLE	13374	1.000	B3-U0-G2	85	425	Cree Inc	OSQ-ML-B-DA + OSQM-B-16L-40K7-3M-UL-NM-XX-Q9
[Symbol]	1	A2	BACK-BACK	13374	1.000	B3-U0-G2	85	170	Cree Inc	OSQ-ML-B-DA + OSQM-B-16L-40K7-3M-UL-NM-XX-Q9
[Symbol]	3	B	SINGLE	12699	1.000	B2-U0-G2	104	312	Cree Inc	OSQ-ML-B-DA + OSQM-B-16L-40K7-3M-UL-NM-XX-Q9 + OSQ-BLSMF
[Symbol]	1	B3	3 @ 90 Degrees	12699	1.000	B2-U0-G2	104	312	Cree Inc	OSQ-ML-B-DA + OSQM-B-16L-40K7-3M-UL-NM-XX-Q9 + OSQ-BLSMF
[Symbol]	7	D	SINGLE	6094	1.000	B1-U0-G2	46.95	328.65	Cree Inc	XSPW-B-WM-3ME-6L-40K-UL-XX
[Symbol]	4	E	SINGLE	6100	1.000	B2-U0-G2	47	188	Cree Inc	XSPW-B-WM-4ME-6L-40K-UL-XX
[Symbol]	6	F	Single	9484	1.000	B3-U3-G1	81.1	486.6	Cree Lighting	CPY-13L-40K9-DF-UL-RC-XX-Q9



Project:
COMMERCIAL DEVELOPMENT HALO CAR WASH

3095 Palladium Drive
Ottawa Ontario

Drawing Title:
HALO CAR WASH DETAILS

Drawn By: J.Y. Checked By: J.P. Date Checked: JUN. 2023 Project No: 2023-088

Date Plotted: Scale: 1:400

Drawing No: **LE-1B** Revision No: 19021
D02-02-23-0058 & D07-12-23-0092