

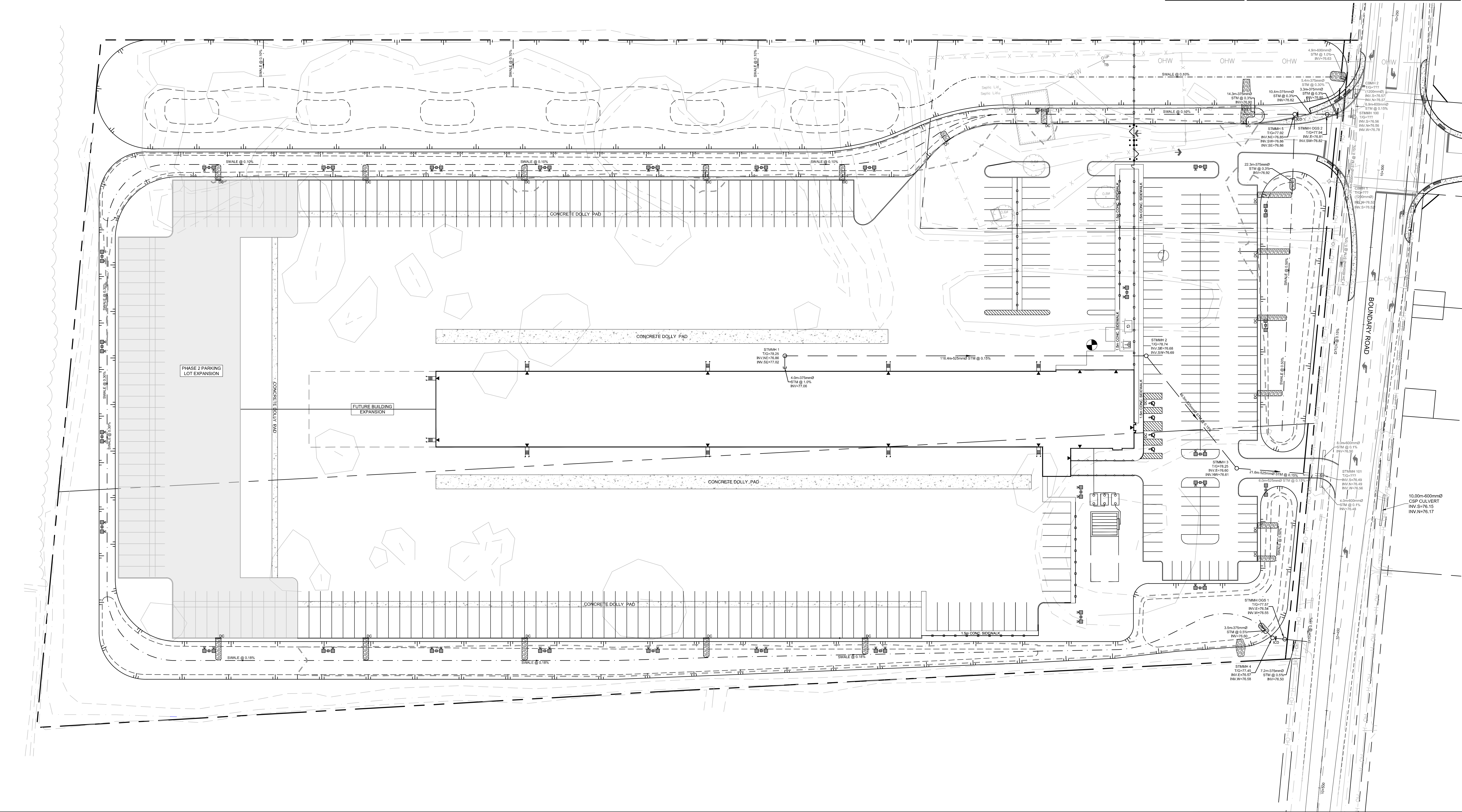
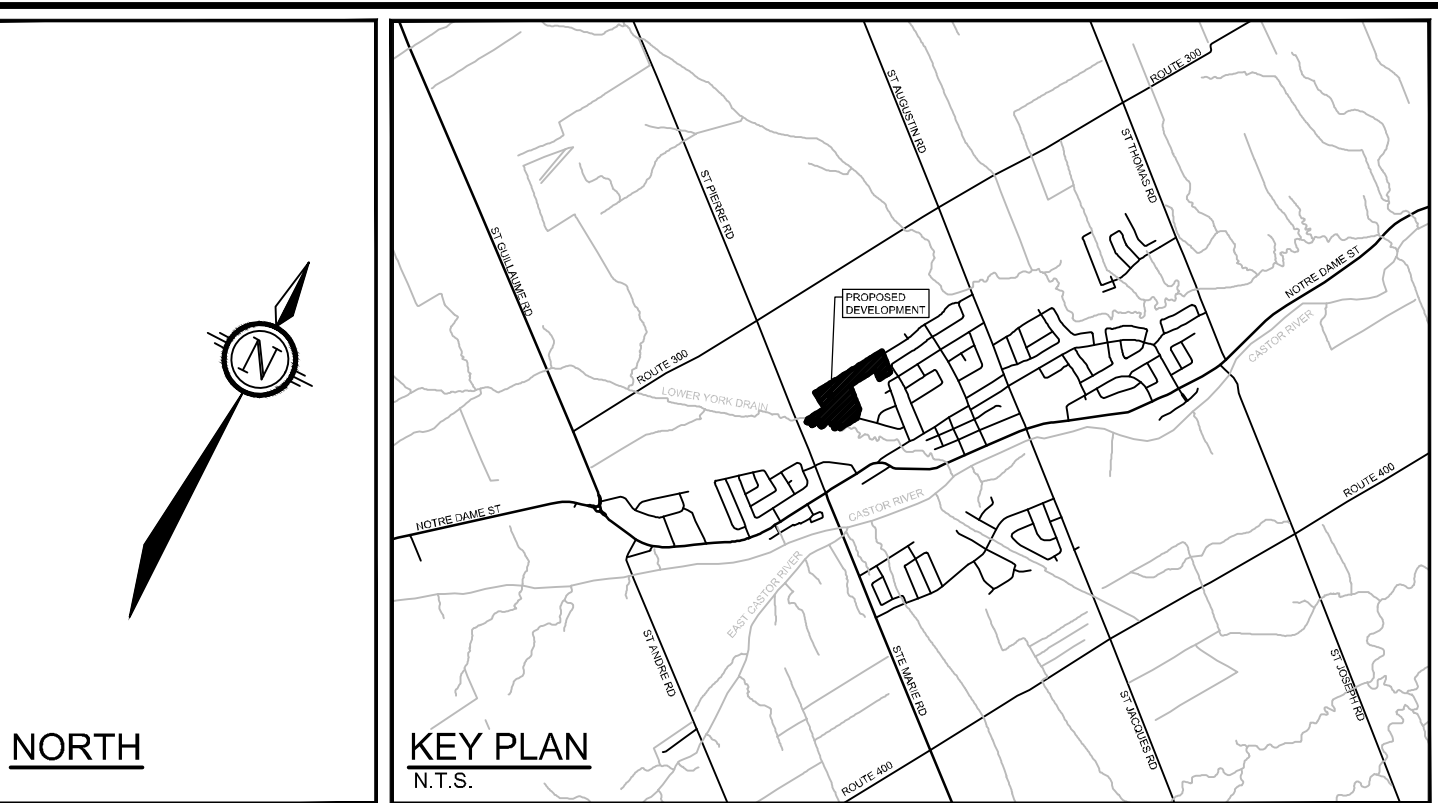
**LEGEND**

- BOREHOLE
- TEST PIT
- PROPERTY LINE
- PROPOSED SECURITY FENCE (REFER TO LANDSCAPE)
- PROPOSED CURB
- PROPOSED DEPRESSED CURB
- TACTILE WALKING SURFACE INDICATOR (REFER CITY DETAIL SCT.3)
- SWALE WITH SUBDRAIN AND DIRECTION OF FLOW
- TERRACING 2.5:1 SLOPE MAX (UNLESS OTHERWISE INDICATED)
- SLOPE AND DIRECTION
- PROPOSED SITE LIGHTING (REFER TO ARCHITECTURAL DRAWINGS)
- PROPOSED ELEVATION
- EXISTING ELEVATION
- PROPOSED SWALE ELEVATION
- PROPOSED TOP OF CURB ELEVATION
- PROPOSED TOP OF WALE ELEVATION
- PROPOSED BOTTOM OF WALL ELEVATION
- PROPOSED BUILDING ENTRANCE
- DIRECTION OF MAJOR OVERLAND FLOW
- PROPOSED RIP RAP WITH NON WOVEN GEOTEXTILE
- PROPOSED STORM SEWER AND MANHOLE
- PROPOSED CATCHBASIN MANHOLE
- PROPOSED INLET CONTROL DEVICE

INLET CONTROL DEVICE FOR AREA A-3 @ STMMH 4						
DESIGN EVENT	ICD TYPE AND SIZE	DIAMETER OF OUTLET PIPE (mm)	DESIGN FLOW (L/s)	DESIGN HEAD (m)	STORAGE REQUIRED (m³)	MAX STORAGE PROVIDED (m³)
1:5 YEAR	PLATE 208mm	375	53.9	0.48	488.0	1280.0
1:100 YEAR	PLATE 208mm	375	61.5	0.60	820.0	1280.0

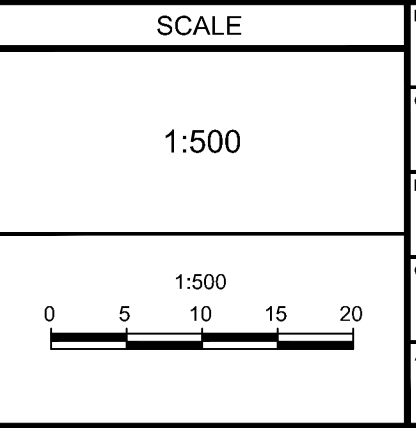
INLET CONTROL DEVICE FOR AREA A-4 @ STMMH 5						
DESIGN EVENT	ICD TYPE AND SIZE	DIAMETER OF OUTLET PIPE (mm)	DESIGN FLOW (L/s)	DESIGN HEAD (m)	STORAGE REQUIRED (m³)	MAX STORAGE PROVIDED (m³)
1:5 YEAR	PLATE 240mm	375	63.4	0.45	960.0	1505.0
1:100 YEAR	PLATE 240mm	375	70.3	0.53	1140.0	1505.0



**NOTE:**  
THE POSITION OF ALL POLE LINES, CONDUITS, WATERMANS, SEWERS AND OTHER UNDERGROUND AND OVERGROUND UTILITIES AND STRUCTURES IS NOT NECESSARILY SHOWN ON THE CONTRACT DRAWINGS, AND WHERE SHOWN, THE ACCURACY OF THE POSITION OF SUCH UTILITIES AND STRUCTURES IS NOT GUARANTEED. BEFORE STARTING WORK, DETERMINE THE EXACT LOCATION OF ALL SUCH UTILITIES AND STRUCTURES AND ASSUME ALL LIABILITY FOR DAMAGE TO THEM.

**NOT FOR CONSTRUCTION**

No.	REVISION	DATE	BY
2.	REVISED PER CITY AND SNC COMMENTS	OCT 18/21	MJH
1.	COORDINATION	FEB 5/21	MJH



DESIGN	MJH
CHECKED	JLS
DRAWN	MJH
CHECKED	JLS
APPROVED	MJH

**FOR REVIEW ONLY**

**NOVATECH**  
Engineers, Planners & Landscape Architects  
Suite 200, 240 Michael Copland Drive  
Ottawa, Ontario, Canada K2M 1P6  
Telephone: (613) 254-9643  
Facsimile: (613) 254-5867  
Website: www.novatech-eng.com

LOCATION  
CITY OF OTTAWA  
5110 BOUNDARY ROAD

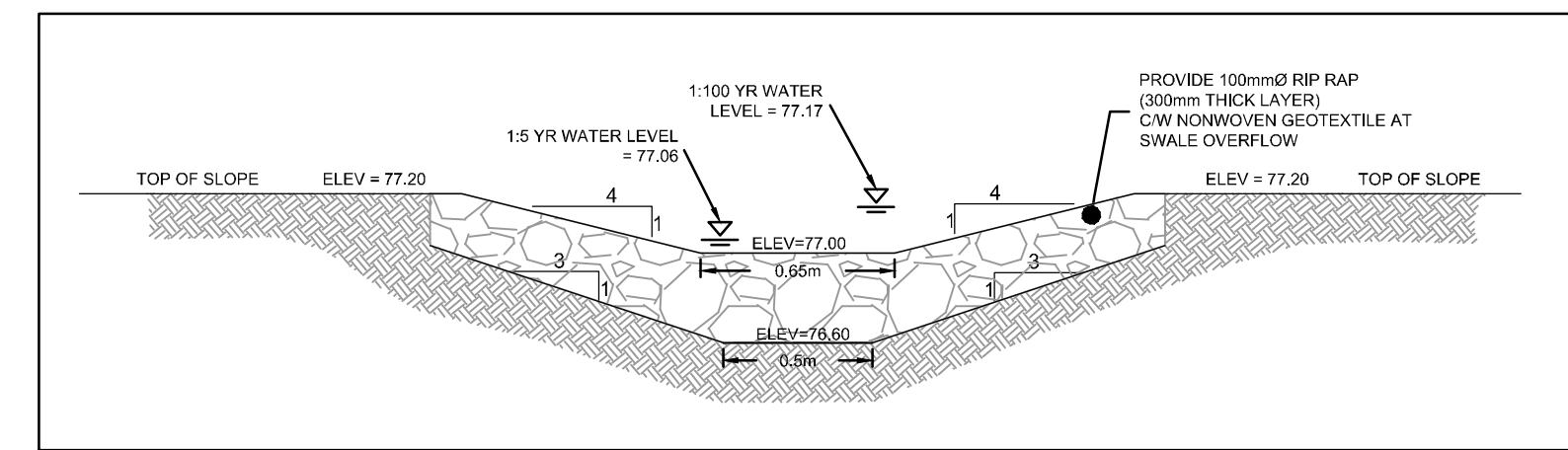
DRAWING NAME  
**CONCEPTUAL SERVICING PLAN**

PROJECT No. 118168  
REV # 2  
DRAWING No. 118168-GP

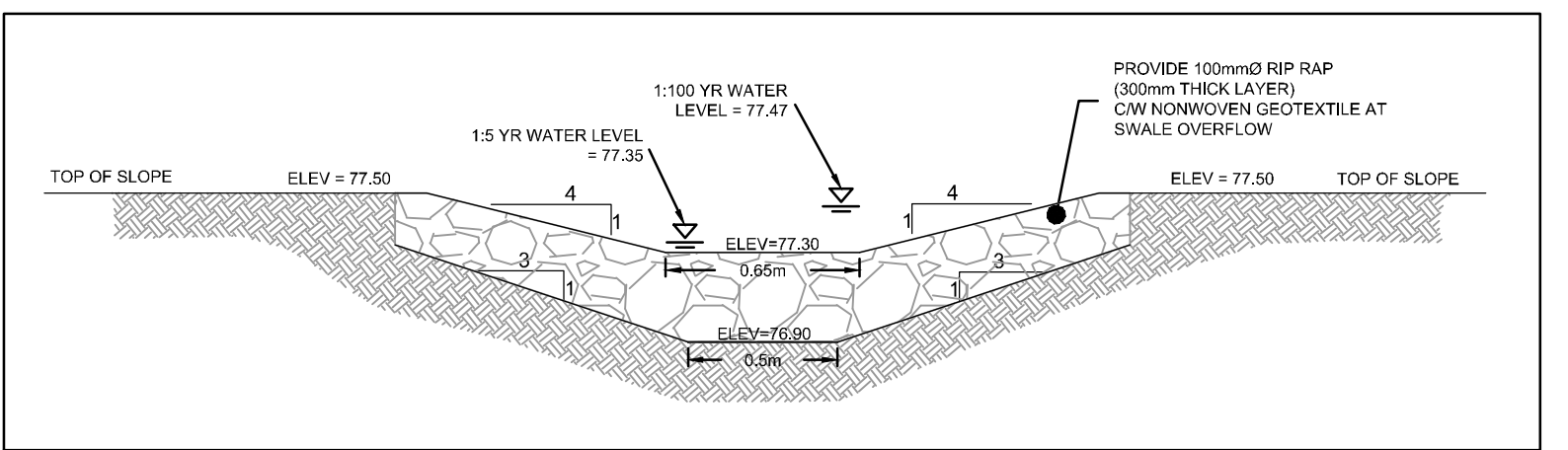


**LEGEND**

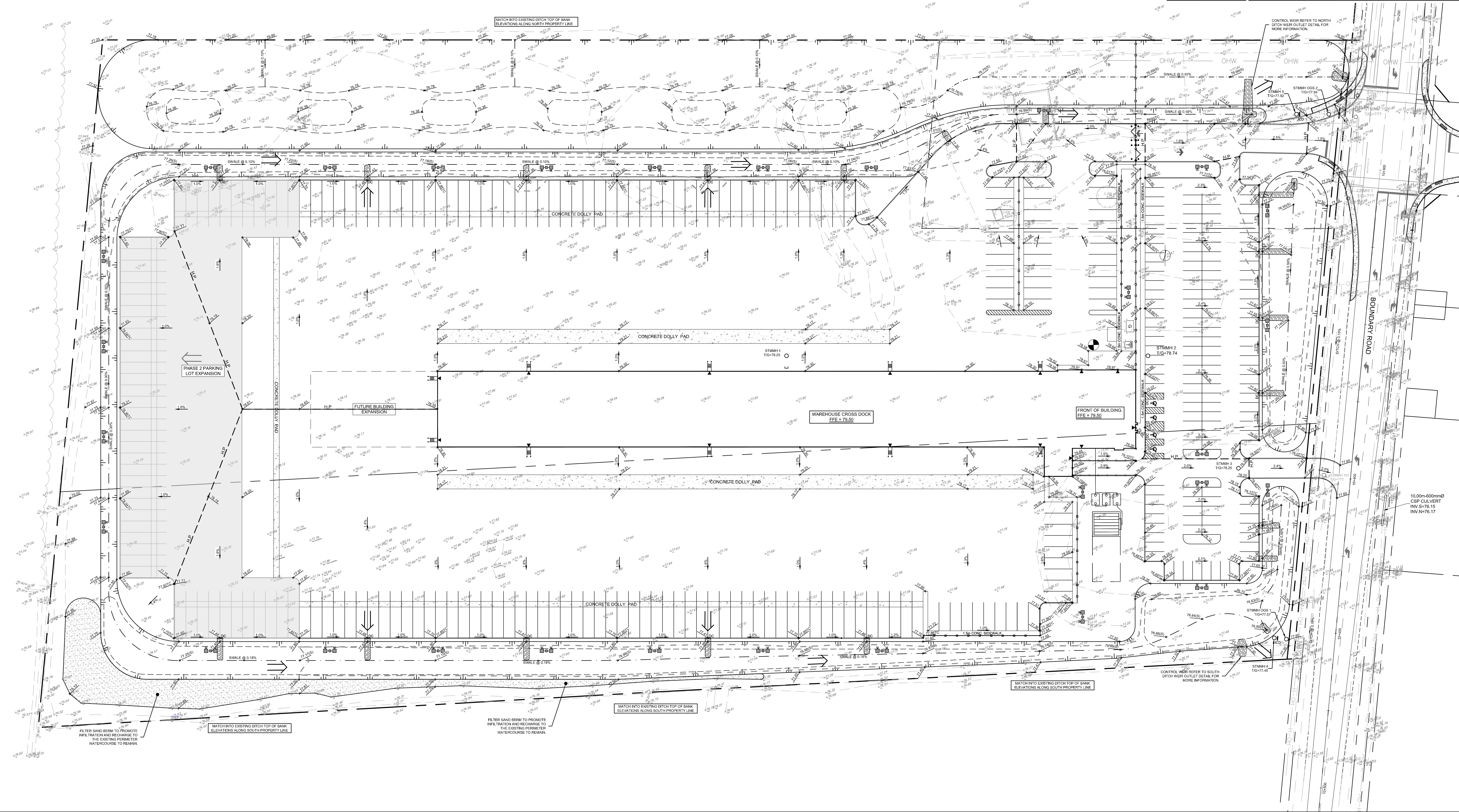
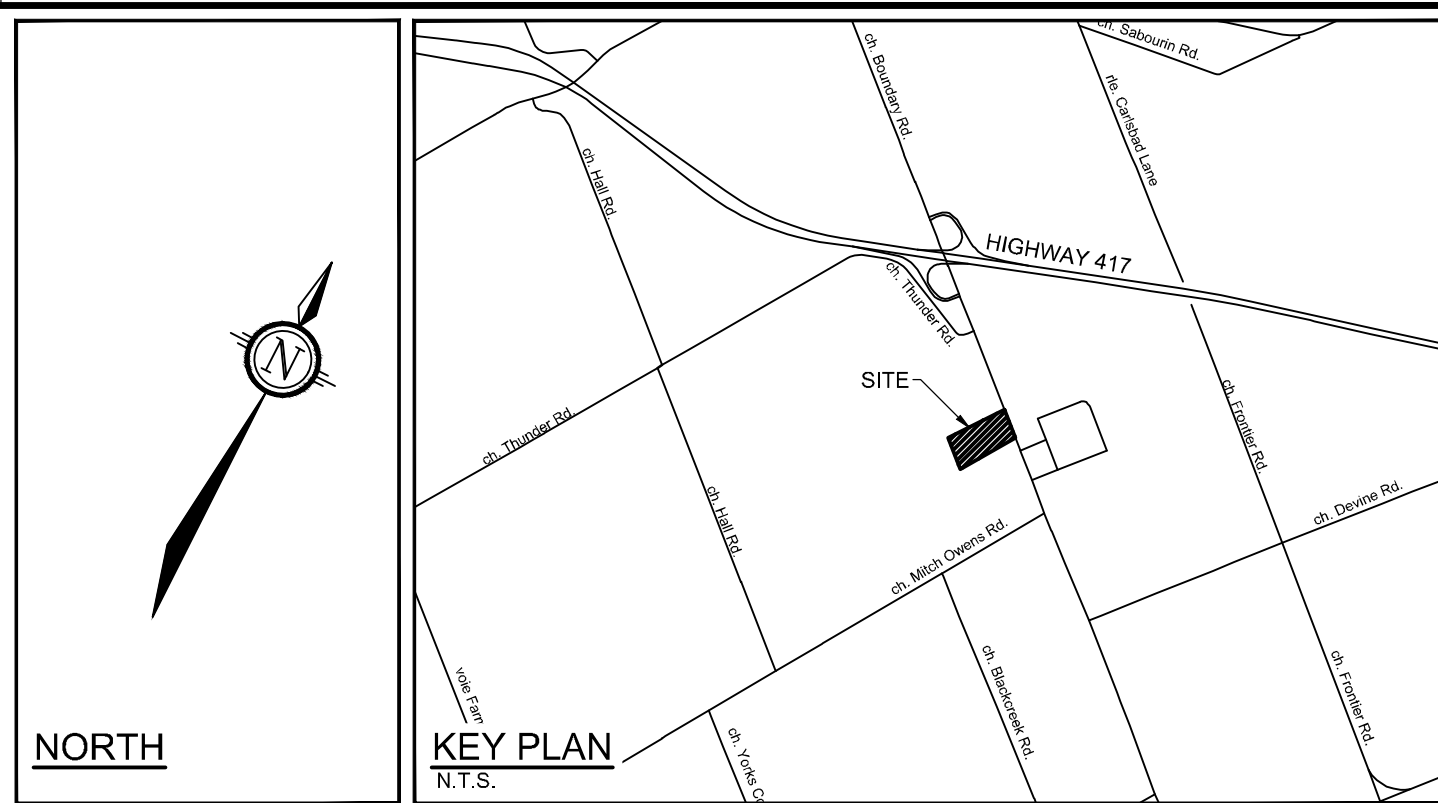
- BOREHOLE
- TEST PIT
- PROPERTY LINE
- PROPOSED SECURITY FENCE (REFER TO LANDSCAPE)
- PROPOSED CURB
- PROPOSED DEPRESSED CURB
- TACTILE WALKING SURFACE INDICATOR (REFER CITY DETAIL SCT.3)
- SWALE WITH SUBDRAIN AND DIRECTION OF FLOW
- TERRACING 2.5:1 SLOPE MAX (UNLESS OTHERWISE INDICATED)
- SLOPE AND DIRECTION
- PROPOSED SITE LIGHTING (REFER TO ARCHITECTURAL DRAWINGS)
- PROPOSED ELEVATION
- EXISTING ELEVATION
- PROPOSED SWALE ELEVATION
- PROPOSED TOP OF CURB ELEVATION
- PROPOSED TOP OF WALE ELEVATION
- PROPOSED BOTTOM OF WALL ELEVATION
- PROPOSED BUILDING ENTRANCE
- DIRECTION OF MAJOR OVERLAND FLOW
- PROPOSED RIP RAP WITH NON WOVEN GEOTEXTILE
- PROPOSED STORM SEWER AND MANHOLE
- PROPOSED CATCH-BASIN MANHOLE
- PROPOSED INLET CONTROL DEVICE
- 100-YEAR PONDING LIMITS



**SOUTH DITCH WEIR OUTLET DETAIL**  
SCALE 1:25



**NORTH DITCH WEIR OUTLET DETAIL**  
SCALE 1:25



**NOT FOR CONSTRUCTION**

**NOTE:**  
THE POSITION OF ALL POLE LINES, CONDUITS, WATERMANS, SEWERS AND OTHER UNDERGROUND AND OVERGROUND UTILITIES AND STRUCTURES IS NOT NECESSARILY SHOWN ON THE CONTRACT DRAWINGS, AND WHERE SHOWN, THE ACCURACY OF THE POSITION OF SUCH UTILITIES AND STRUCTURES IS NOT GUARANTEED. BEFORE STARTING WORK, DETERMINE THE EXACT LOCATION OF ALL SUCH UTILITIES AND STRUCTURES AND ASSUME ALL LIABILITY FOR DAMAGE TO THEM.

No.	REVISION	DATE	BY
2	REVISED PER CITY AND SNC COMMENTS	OCT 18/21	MJH
1	COORDINATION	FEB 5/21	MJH

SCALE	DESIGN	CHECKED	DRAWN	CHECKED	APPROVED
1:500	MJH	MJH	MJH	JLS	MJH

**FOR REVIEW ONLY**

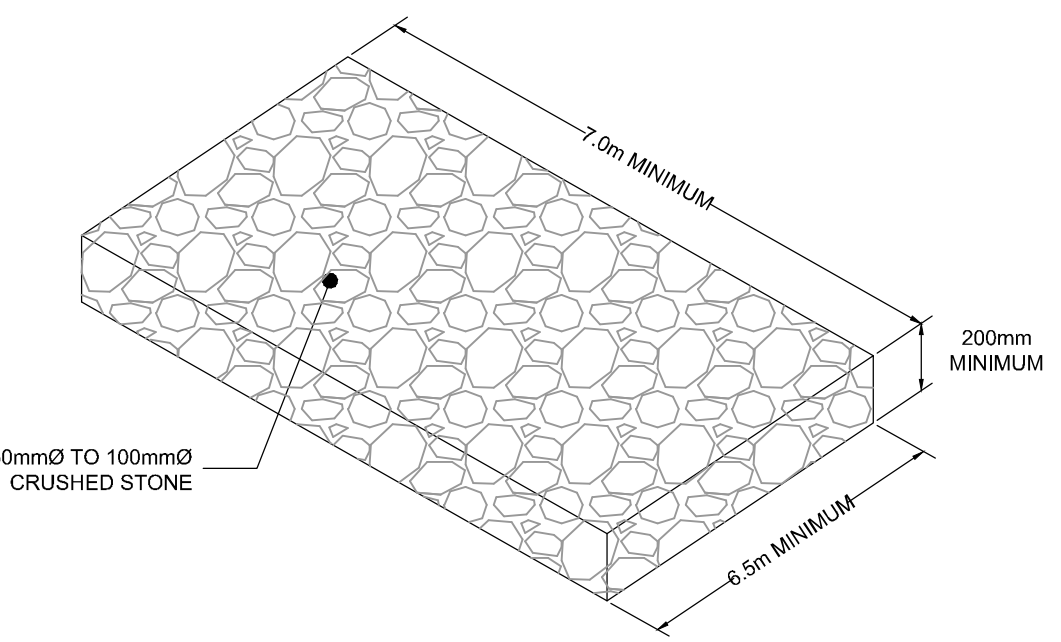
**NOVATECH**  
Engineers, Planners & Landscape Architects  
Suite 200, 240 Michael Copland Drive  
Ottawa, Ontario, Canada K2M 1P6  
Telephone: (613) 254-9643  
Facsimile: (613) 254-5867  
Website: www.novatech-eng.com

LOCATION CITY OF OTTAWA 5110 BOUNDARY ROAD	PROJECT No. 118168
DRAWING NAME CONCEPTUAL GRADING PLAN	REV # 2
	DRAWING No. 118168-GR

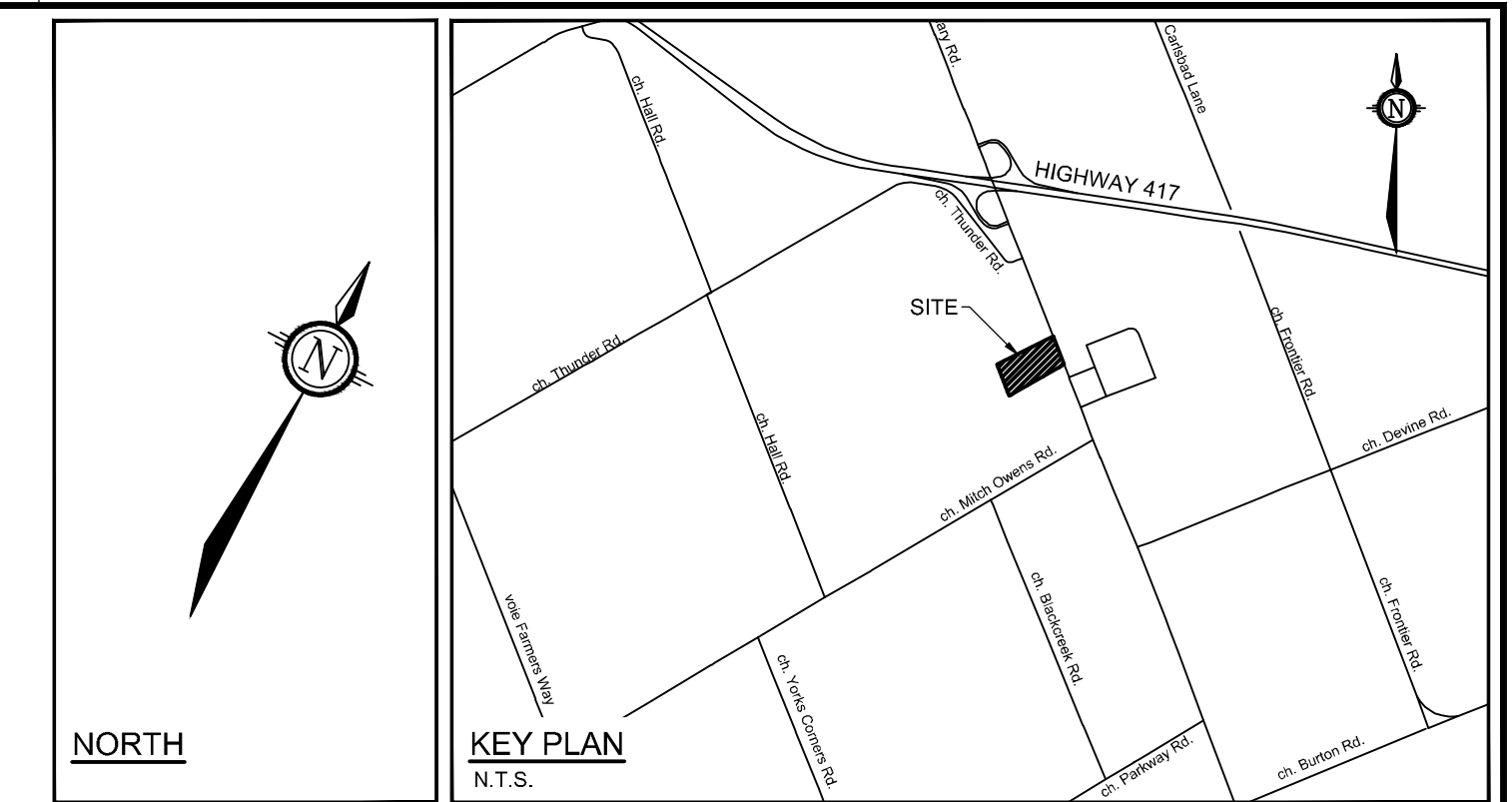


**EROSION AND SEDIMENT CONTROL NOTES :**

1. THE CONTRACTOR SHALL IMPLEMENT BEST MANAGEMENT PRACTICES DURING CONSTRUCTION ACTIVITIES TO PROTECT THE STORM DRAINAGE SYSTEM AND THE DOWNSTREAM RECEIVING WATERCOURSE(S). THIS INCLUDES LIMITING THE AMOUNT OF EXPOSED SOIL, USING FILTER BAGS UNDER THE GRATES OF CATCHBASINS AND MANHOLES AND INSTALLING SILT FENCES AND OTHER EFFECTIVE SEDIMENT TRAPS.
2. ALL EROSION AND SEDIMENT CONTROLS ARE TO BE INSTALLED TO THE SATISFACTION OF THE ENGINEER AND THE CITY OF OTTAWA. THEY ARE TO BE APPROPRIATE TO THE SITE CONDITIONS, PRIOR TO UNDERTAKING ANY SITE ALTERATIONS (FILLING, GRADING, REMOVAL OF VEGETATION, ETC.) AND DURING ALL PHASES OF SITE PREPARATION AND CONSTRUCTION. THESE PRACTICES ARE TO BE IMPLEMENTED IN ACCORDANCE WITH THE CURRENT BEST MANAGEMENT PRACTICES FOR EROSION AND SEDIMENT CONTROL AND SHOULD INCLUDE AS A MINIMUM THOSE MEASURES INDICATED ON THE PLAN.
3. TO PREVENT SURFACE EROSION FROM ENTERING ANY DITCH OR STORM SEWER SYSTEM DURING CONSTRUCTION, FILTER BAGS WILL BE PLACED UNDER GRATES OF CATCHBASINS AND STRUCTURES. A LIGHT DUTY SILT FENCE BARRIER WILL ALSO BE INSTALLED AROUND THE CONSTRUCTION AREA. THESE CONTROL MEASURES ARE TO REMAIN IN PLACE UNTIL VEGETATION HAS BEEN ESTABLISHED AND CONSTRUCTION IS COMPLETE.
4. THE SEDIMENT CONTROL MEASURES SHALL ONLY BE REMOVED WHEN, IN THE OPINION OF THE ENGINEER, THE MEASURES ARE NO LONGER REQUIRED. NO CONTROL MEASURES MAY BE PERMANENTLY REMOVED WITHOUT PRIOR AUTHORIZATION FROM THE ENGINEER.
5. THE CONTRACTOR SHALL IMMEDIATELY REPORT TO THE ENGINEER ANY ACCIDENTAL DISCHARGES OF SEDIMENT MATERIAL INTO ANY DITCH OR STORM SEWER SYSTEM. APPROPRIATE RESPONSE MEASURES, INCLUDING ANY REPAIRS TO EXISTING CONTROL MEASURES OR THE IMPLEMENTATION OF ADDITIONAL CONTROL MEASURES, SHALL BE CARRIED OUT BY THE CONTRACTOR WITHOUT DELAY.
6. THE CONTRACTOR ACKNOWLEDGES THAT FAILURE TO IMPLEMENT EROSION AND SEDIMENT CONTROL MEASURES MAY BE SUBJECT TO PENALTIES IMPOSED BY ANY APPLICABLE REGULATORY AGENCY.
7. ROADWAYS ARE TO BE SWEEPED AS REQUIRED OR AS DIRECTED BY THE ENGINEER AND/OR MUNICIPALITY.
8. THE CONTRACTOR SHALL ENSURE PROPER DUST CONTROL IS PROVIDED WITH THE APPLICATION OF WATER (AND IF REQUIRED, CALCIUM CHLORIDE) DURING DRY PERIODS.
9. THE PROPOSED PERIMETER SWALE IS TO BE TREATED WITH TOPSOIL, HYDROSEED AND MULCH AS SOON AS IS PRACTICAL AFTER CONSTRUCTION OF THE SWALE.
10. THE EROSION SEDIMENT CONTROL PLAN IS TO BE CONSIDERED A "LIVING DOCUMENT" WHICH MAY BE MODIFIED IN THE EVENT THAT THE CONTROL MEASURES ARE INSUFFICIENT.



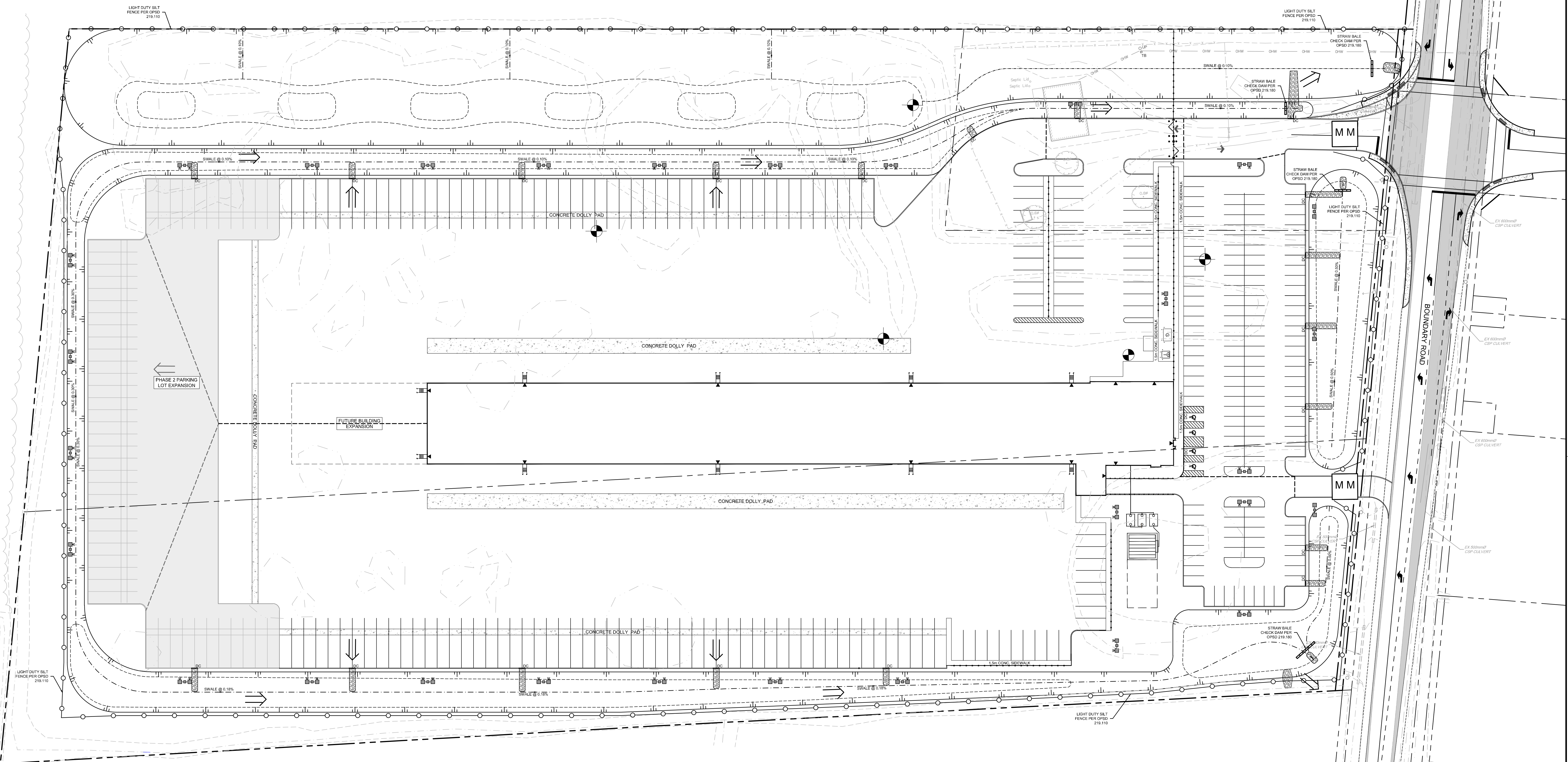
**MUD MAT DETAIL**  
NOT TO SCALE



**LEGEND**

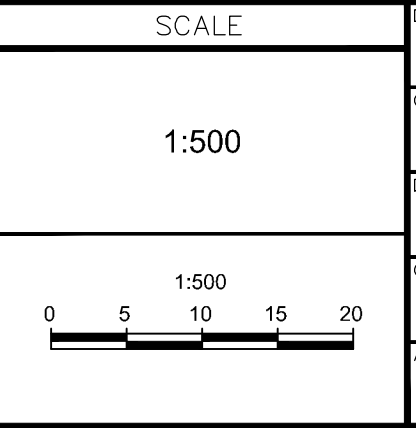
	PROPERTY LINE		LIGHT DUTY SILT FENCE (OPSD 219.110)
	PROPOSED SWALE		PROPOSED STORM MANHOLE
	TERRACING 3:1 SLOPE MAX (UNLESS OTHERWISE INDICATED)		PROPOSED BUILDING ENTRANCE
	PROPOSED MUD MAT		STRAWBALE CHECK DAM (OPSD 219.180)
			RIP-RAP

ESC Measure	Symbol	OPSD No.	During Construction			After Construction		
			Installation Responsibility	Inspection Responsibility	Inspection Frequency	Inspection/Maintenance Responsibility	Removal Responsibility	
Silt Fence		219.110	Developer's Contractor	Developer's Contractor	Weekly (as a minimum)	Developer	Developer's Contractor	
Mud Mat		See Detail	Developer's Contractor	Developer's Contractor	Weekly (as a minimum)	N/A	Developer's Contractor	
Straw Bale Check Dam		219.180	Developer's Contractor	Developer's Contractor	Weekly (as a minimum)	N/A	N/A	
Sediment Basin (for flows being pumped out of excavations)	Location as Required by Contractor	---	Developer's Contractor	Developer's Contractor	After Every Rainstorm	N/A	Developer's Contractor	
Permanent Measures	Vegetated Swales	N/A	N/A	Developer's Contractor	Developer's Contractor	Weekly (as a minimum)	Developer	N/A



NOTE:  
THE POSITION OF ALL POLE LINES, CONDUITS, WATERMANS, SEWERS AND OTHER UNDERGROUND AND OVERGROUND UTILITIES AND STRUCTURES IS NOT NECESSARILY SHOWN ON THE CONTRACT DRAWINGS, AND WHERE SHOWN, THE ACCURACY OF THE POSITION OF SUCH UTILITIES AND STRUCTURES IS NOT GUARANTEED. BEFORE STARTING WORK, DETERMINE THE EXACT LOCATION OF ALL SUCH UTILITIES AND STRUCTURES AND ASSUME ALL LIABILITY FOR DAMAGE TO THEM.

No.	REVISION	DATE	BY
1.	REVISED PER CITY AND SNC COMMENTS	OCT 18/21	MJH



FOR REVIEW ONLY
DESIGN: MJH
CHECKED: JLS
DRAWN: MJH
CHECKED: JLS
APPROVED: MJH

**NOVATECH**  
Engineers, Planners & Landscape Architects  
Suite 200, 240 Michael Cowpland Drive  
Ottawa, Ontario, Canada K2M 1P6  
Telephone: (613) 254-9643  
Facsimile: (613) 254-5867  
Website: www.novatech-eng.com

LOCATION  
CITY OF OTTAWA  
5110 BOUNDARY ROAD

DRAWING NAME  
**EROSION AND SEDIMENT CONTROL PLAN**

PROJECT No. 118168  
REV # 1  
DRAWING No. 118168-ESC