



1 East (Front) Elevation
1:100

2 North (Corner) Elevation
1:100

3 West (Rear) Elevation
1:100

4 South (Side) Elevation
1:100

MATERIAL LEGEND & NOTES

- 1 STONE VENEER
- 2 METAL PANEL, DARK GREY
- 3 METAL PANEL, LIGHT GREY
- 4 METAL PANEL, SILVER GREY
- 5 METAL PANEL, MOUSE GREY
- 6 PRECAST CORNICE
- 7 PRECAST PARAPET CAP
- 8 CANOPY
- 9 BIRD-SAFE GLASS
- 10 OVERHEAD DOOR
- 11 OPAQUE FENCE
- 12 OPAQUE GLASS RAILING

COLOUR SAMPLE PALETTE

- 1 STONE VENEER

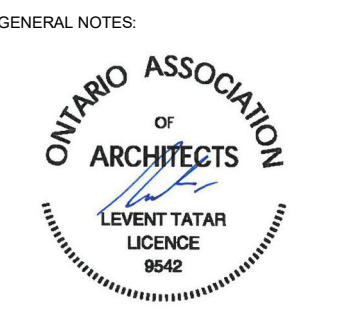
- 2 METAL PANEL, DARK GREY

- 3 METAL PANEL, LIGHT GREY

- 4 METAL PANEL, SILVER GREY

- 5 METAL PANEL, MOUSE GREY


RESPONSIBILITIES:
 DO NOT SCALE DRAWINGS
 ALL DESIGN AND CONSTRUCTION TO BE IN ACCORDANCE WITH THE ONTARIO BUILDING CODE 2012
 ALL CONTRACTORS MUST WORK IN ACCORDANCE WITH ALL LAWS, REGULATIONS AND BYLAWS HAVING JURISDICTION
 IT IS THE RESPONSIBILITY OF THE APPROPRIATE CONTRACTOR TO CHECK AND VERIFY ALL DIMENSIONS ON SITE AND REPORT ALL ERRORS AND OMISSIONS TO THE ARCHITECT/DRAWING COPYRIGHT RESERVED



224 PRESTON ST.
 NEW 6 STOREY MIXED-USE

OWNER/DEVELOPER:
224 ON PRESTON INC.

ARCHITECT:
REDLINE ARCHITECTURE INC.

APPLICANT:

CIVIL ENGINEER:
EXP: 1551 BAXTER ROAD
OTTAWA, ON
K2C-3P1

LANDSCAPING:
DENDRON FORESTRY SERVICES
OTTAWA, ON
K1S 5B2

SURVEYOR:
ADRI LTD.
14 CONCOURSE GATE, SUITE 500
OTTAWA, ON
K2E-7S6

CONSULTANTS:
STRUCTURAL - TBD
MECHANICAL - TBD
ELECTRICAL - TBD

| NO. | REVISION/ISSUE | DATE | MDY |
|-----|---------------------|----------|-----|
| 9 | | | |
| 8 | | | |
| 7 | | | |
| 6 | | | |
| 5 | | | |
| 4 | | | |
| 3 | | | |
| 2 | ISSUED FOR REVISION | 11/15/20 | |
| 1 | ISSUED FOR SPA & ZA | 01/23/20 | |

PROJECT:
224 PRESTON ST.
NEW 6 STOREY MIXED-USE
224 PRESTON ST.
OTTAWA, ON K1R 1Y1

ELEVATIONS

DRAWN BY: SHEET:
 DATE: MARCH 28, 2022
 SCALE: AS NOTED

A4