



ALL SAINTS

330 LAURIER ANENUE EAST

CLIENT: ALL SAINTS DEVELOPMENT LP.
2024/01/31
Project Number: 160401789



LOCATION PLAN

LIST OF DRAWINGS

LANDSCAPE DRAWINGS:

- L100 LANDSCAPE PLAN
- L101 PLANTING PLAN

- L200 GREEN ROOF LANDSCAPE PLAN

- L600 LANDSCAPE DETAILS & NOTES - I
- L601 LANDSCAPE DETAILS & NOTES - II
- L602 LANDSCAPE DETAILS & NOTES - III

Copyright Reserved

The Contractor shall verify and be responsible for all dimensions. DO NOT scale the drawing - any errors or omissions shall be reported to Stantec without delay.
The Copyrights to all designs and drawings are the property of Stantec. Reproduction or use for any purpose other than that authorized by Stantec is forbidden.

Legend

- EXISTING TREE
- PROPOSED LARGE DECIDUOUS TREE
- PROPOSED MEDIUM DECIDUOUS TREE
- PROPOSED COLUMNAR DECIDUOUS TREE
- PROPOSED PLANTING BED
- PROPOSED SOD
- PROPOSED SIDEWALK WITH SOIL CELLS
- PROPOSED BENCH
- PROPOSED STONE RETAINING WALL MAX. 900mm ht.
- PROPOSED LOW LANDSCAPE STONE WALL MAX. 500mm ht.
- PROPOSED PRIVACY SCREEN
- PROPOSED VENTILATION GRATE
- PROPOSED RIVERWASHED STONES
- PROPOSED PRECAST CONCRETE EDGE
- PROPOSED 1.5m WIDE WALKWAY
- PROPOSED PAVERS TYPE 1
- PROPOSED BIKE RACK
- PROPOSED BOLLARD LIGHTS
- PROPOSED WALL-MOUNTED LIGHT
- PROPOSED GARDEN SPOTLIGHT
- PROPERTY LINE

Notes

8	ISSUED FOR CITY REVIEW	CA	KP	24.01.31
7	RE-ISSUED FOR ZBLA	CA	KP	23.11.14
6	ISSUED FOR ZBLA	CA	KP	23.08.18
3	ISSUED FOR UDRP	CA	KP	23.06.22
1	ISSUED FOR COMMENTS	CA	KP	23.05.16
Revision		By	Appd.	YY.MM.DD
File Name:	160410406	CA	KP	KP
		Dwn.	Chkd.	Dsgn.
				YY.MM.DD

Permit-Seal



Client/Project

ALL SAINTS DEVELOPMENT LP

WINDMILL
330 LAURIER ANENUE EAST
OTTAWA, ON

Title

LANDSCAPE PLAN

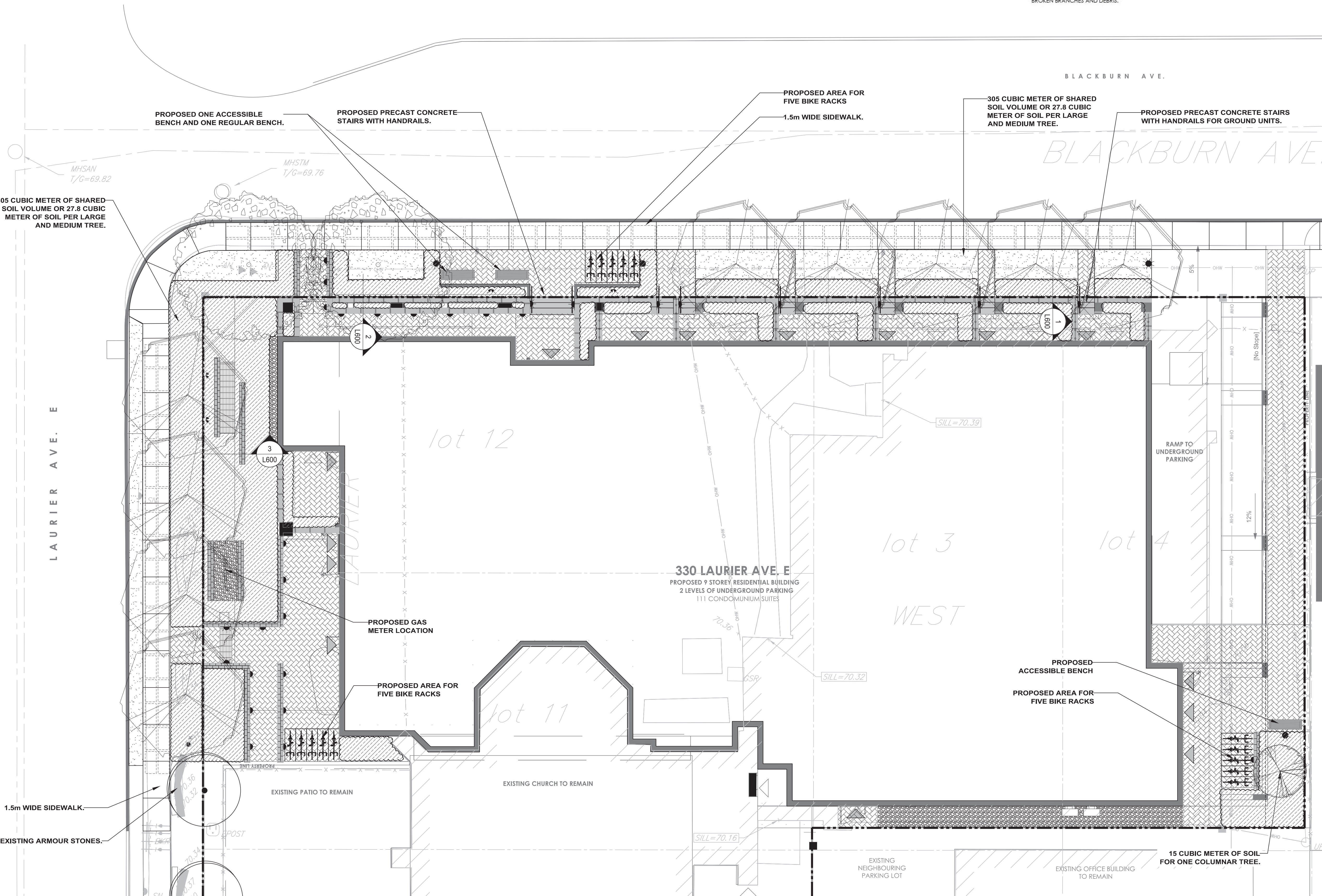
Project No.	Scale	0 1 3 5m
160401789	1:100	
Drawing No.	Sheet	Revision
L100	1 of 6	8

SOIL VOLUME CALCULATION SCHEDULE

TREE TYPE/SIZE	SINGLE TREE SOIL VOLUME REQUIRED (m3)	MULTIPLE TREE SOIL VOLUME REQUIRED (m3/TREE)	ACTUAL TREE SOIL VOLUME (m3/TREE)
COLUMNAR	15	9	15
MEDIUM	25	15	27.8
LARGE	30	18	27.8

GENERAL LANDSCAPE NOTES

- REFER TO TREE CONSERVATION REPORT FOR INFORMATION RELATED TO TREE REMOVAL / TREE PROTECTION DIRECTIONS. EXISTING VEGETATED AREAS ON ADJACENT PROPERTIES SHALL REMAIN AND BE PROTECTED BEFORE, DURING, AND AFTER CONSTRUCTION.
- REFER TO ENGINEERING DRAWINGS FOR PROPOSED GRADING, AND SITE SERVICING.
- EXISTING VEGETATED AREAS ON ADJACENT PROPERTIES SHALL REMAIN AND BE PROTECTED BEFORE, DURING, AND AFTER CONSTRUCTION.
- SOD SHALL BE KENTUCKY BLUEGRASS SOD INSTALLED OVER 135MM OF TOPSOIL. SOD SHALL BE INSTALLED WHERE INDICATED ON THE LANDSCAPE PLANS AND IN ALL DISTURBED AREAS. INSTALL SOD AS PER OPSS 803.
- CONTRACTOR TO LOCATE AND STAKE ALL UTILITIES PRIOR TO ANY WORK ON THE SITE AND TO OBTAIN CLEARANCE FROM ALL APPLICABLE UTILITIES. DO NOT PLANT DIRECTLY ABOVE UNDERGROUND UTILITIES. REPORT CONFLICTS AND ANY DISCREPANCIES TO THE LANDSCAPE ARCHITECT FOR DIRECTION.
- NO TREES SHALL BE PLANTED ON PROPERTY / LOT LINES OR WITHIN DRAINAGE EASEMENTS.
- NO TREES SHALL BE PLANTED UNDER OVERHEAD WIRES.
- FOR TREES, MAINTAIN A MINIMUM DISTANCE OF 1500mm FROM ALL UNDERGROUND UTILITIES.
- FOR TREES, MAINTAIN A MINIMUM DISTANCE OF 4500mm FROM ALL BUILDINGS.
- FOR TREES, MAINTAIN A MINIMUM DISTANCE OF 4000mm FROM ALL HYDRO TRANSFORMERS.
- FOR TREES, MAINTAIN A MINIMUM OF 1000mm FROM SIDEWALKS, PATHWAYS, AND DRIVEWAYS.
- THE LANDSCAPE ARCHITECT MAY ADJUST THE LOCATION OF PLANTING PRIOR TO PLANTING TO MINIMIZE CONFLICTS WITH UTILITIES, DRIVEWAYS AND INTERSECTION VISIBILITY.
- CONTRACTOR SHALL SUPPLY ALL MATERIALS IN QUANTITIES SUFFICIENT TO COMPLETE WORK SHOWN ON THESE DRAWINGS. ANY DISCREPANCIES SHALL BE REPORTED TO THE LANDSCAPE ARCHITECT FOR DIRECTION.
- DO NOT MAKE SUBSTITUTIONS OF MATERIALS, PRODUCTS OR QUANTITIES WITHOUT PRIOR WRITTEN PERMISSION OF THE LANDSCAPE ARCHITECT.
- PLANT MATERIAL QUALITY STANDARDS:
- ALL PLANT MATERIAL TO CONFORM TO THE CANADIAN NURSERY TRADES ASSOCIATION AND THE CANADIAN STANDARDS FOR NURSERY STOCK AS TO SPECIES, SIZE AND CONDITION.
- PLANT MATERIAL COLLECTED FROM WILD SOURCES ARE NOT ACCEPTABLE.
- THE LANDSCAPE ARCHITECT RESERVES THE RIGHT TO REFUSE ACCEPTANCE OF ANY PLANT DISPLAYING POOR GROWTH HABITS APPROPRIATE TO SPECIES, DISEASE OR DAMAGE FROM POOR HANDLING DURING TRANSPORT, ON SITE STORAGE, INSTALLATION OR MAINTENANCE.
- ANY PLANTS THAT DO NOT CONFORM TO THESE STANDARDS WILL BE PROMPTLY REMOVED FROM THE SITE BY THE CONTRACTOR AND REPLACED WITH MATERIAL OF ACCEPTABLE QUALITY AT NO ADDITIONAL COST TO THE PROJECT.
- THE CONTRACTOR TO MAKE GOOD TO THE SATISFACTION OF THE LANDSCAPE ARCHITECT ANY AREAS DAMAGED BY THE WORK.
- PRUNING - TO SUIT SPECIES - PRUNE BRANCHES BY 1/3 TO REMOVE DAMAGED OR OBJECTIONABLE BRANCHES FOLLOWING PROPER HORTICULTURAL PRACTICE. DO NOT PRUNE LEADERS.
- UPON THE COMPLETION OF WORK EACH DAY, REMOVE ALL DEBRIS, GARBAGE AND SURPLUS MATERIALS FROM THE SITE. KEEP THE SITE CLEAN AND USEABLE AT ALL TIMES.
- ALL WORKMANSHIP AND MATERIALS (INCLUDING PLANTS) TO BE GUARANTEED FOR ONE FULL YEAR FOLLOWING FINAL ACCEPTANCE OF THE PROJECT BY THE LANDSCAPE ARCHITECT.
- THE CONTRACTOR SHALL REMOVE ALL TREE STAKES AND TREE SUPPORTS PRIOR TO ASSUMPTION BY THE OWNER.
- AT THE TIME OF INSPECTION FOR ACCEPTANCE ALL TREE PITS SHALL BE CULTIVATED, FREE OF WEEDS, LEAVES, BROKEN BRANCHES AND DEBRIS.



W:\active\16041789\planning\landscaping\160401789_L8.dwg
2024/01/31 1:41 AM By: Alan Chabot

PLANTING SCHEDULE - L101

QUANTITIES KEY	BOTANICAL NAME	COMMON NAME	SIZE AT PLANTING	REMARKS
DECIDUOUS TREES - REFER TO DETAIL 1/L602				
9	AR <i>Acer rubrum</i> 'Bowhall'	Bowhall Red Maple	60mm (cal.)	W.B.
2	AS <i>Acer saccharum</i> 'Legacy'	Legacy Sugar Maple	60mm (cal.)	W.B.
1	ASC <i>Acer saccharum</i> 'Columnare'	Columnar Sugar Maple	60mm (cal.)	W.B.
DECIDUOUS SHRUBS - REFER TO DETAIL 3/L602 & 4/L602				
6	DL <i>Diervilla lonicera</i>	Bush Honeysuckle	500mm (ht.)	Potted; Plant at 1000mm o.c.
129	HK <i>Hypericum kalmianum</i>	Pot O'Gold	2 Gallon	Potted; Plant at 500mm o.c.
8	HP <i>Hypericum prolificum</i>	Shrubby St. John's Wort	400mm (ht.)	Potted; Plant at 800mm o.c.
41	PFA <i>Potentilla fruticosa</i> 'Abbotswood'	Abbotswood Potentilla	2 Gallon	Potted; Plant at 500mm o.c.
17	PFF <i>Potentilla fruticosa</i> 'Farreni'	Golddrop cinquefoil	2 Gallon	Potted; Plant at 500mm o.c.
6	POC <i>Physocarpus opulifolius</i> 'Center Glow'	Center Glow Ninebark	500mm (ht.)	Potted; Plant at 1750mm o.c.
29	RAG <i>Rhus aromatica</i> 'Gro-Low'	Gro-Low Fragrant Sumac	500mm (ht.)	Potted; Plant at 750mm o.c.
6	SA <i>Symphoricarpos albus</i>	Snowberry	3 Gallon	Potted; Plant at 1000mm o.c.
CONIFEROUS & BROADLEAF EVERGREEN SHRUBS - REFER TO DETAIL 3/L602 & 4/L602				
20	TOS <i>Thuja occidentalis</i> 'Sherwood Moss'	Sherwood Moss Cedar	600mm (ht.)	Potted; Plant at 800mm o.c.

PLANTING SCHEDULE - L101

QUANTITIES KEY	BOTANICAL NAME	COMMON NAME	SIZE AT PLANTING	REMARKS
PERENNIALS & ORNAMENTAL GRASSES - REFER TO DETAIL 5/L602 & 6/L602				
34	DCB <i>Deschampsia cespitosa</i> 'Bronze Veil'	Bronze Tufted Hair Grass	1 Gallon	Potted; Plant at 500mm o.c.
60	DCN <i>Deschampsia cespitosa</i> 'Northern Lights'	Variagated Tufted Hair Grass	1 Gallon	Potted; Plant at 400mm o.c.
5	EMG <i>Eupatorium maculatum</i> 'Gateway'	Joe Pye Weed	1 Gallon	Potted; Plant at 1000mm o.c.
42	EPA <i>Echinacea pallida</i>	Pale Purple Coneflower	1 Gallon	Potted; Plant at 500mm o.c.
70	EPP <i>Echinacea purpurea</i> 'Prairie Splendor'	Prairie Splendor Coneflower	1 Gallon	Potted; Plant at 400mm o.c.
136	GMA <i>Geranium maculatum</i>	Wild Geranium	1 Gallon	Potted; Plant at 250mm o.c.
68	NFC <i>Nepeta faassenii</i> 'Cat's Meow'	Catmint	1 Gallon	Potted; Plant at 500mm o.c.
108	RHA <i>Rubbeckia hirta</i> 'Autumn Colours'	Autumn Colours Gloriosa Daisy	1 Gallon	Potted; Plant at 300mm o.c.
55	RHI <i>Rubbeckia hirta</i>	Gloriosa Daisy	1 Gallon	Potted; Plant at 400mm o.c.



Stantec Consulting Ltd.
300 - 1331 Clyde Avenue
Ottawa ON
Tel. 613.722.4420
www.stantec.com

Copyright Reserved

The Contractor shall verify and be responsible for all dimensions. DO NOT scale the drawing - any errors or omissions shall be reported to Stantec without delay.
The Copyrights to all designs and drawings are the property of Stantec. Reproduction or use for any purpose other than that authorized by Stantec is forbidden.

Legend

- EXISTING TREE
- PROPOSED DECIDUOUS TREE
- PROPOSED DECIDUOUS SHRUBS
- PROPOSED CONIFEROUS & BROADLEAF SHRUBS
- PROPOSED PERENNIALS & ORNAMENTAL GRASSES
- PROPOSED PLANTING BED
- PROPOSED SOD
- PROPOSED SIDEWALK WITH SOIL CELLS
- PROPOSED BENCH
- PROPOSED STONE RETAINING WALL MAX. 900mm ht.
- PROPOSED LOW LANDSCAPE STONE WALL MAX. 500mm ht.
- PROPOSED PRIVACY SCREEN
- PROPOSED VENTILATION GRATE
- PROPOSED RIVERWASHED STONES
- PROPOSED PRECAST CONCRETE EDGE
- PROPOSED 1.5m WIDE WALKWAY
- PROPOSED PAVERS TYPE 1
- PROPOSED BIKE RACK
- PROPOSED BOLLARD LIGHTS
- PROPOSED WALL-MOUNTED LIGHT
- PROPOSED GARDEN SPOTLIGHT
- PROPERTY LINE

Notes

2	ISSUED FOR CITY REVIEW	CA	KP	24.01.31
1	ISSUED FOR 66% SUBMISSION	CA	KP	23.01.15
Revision		By	Appd.	YY.MM.DD
File Name:	160410406	CA	KP	KP
		Dwn.	Chkd.	Dsgn.
				YY.MM.DD

Permit-Seal



Client/Project

ALL SAINTS DEVELOPMENT LP

WINDMILL
330 LAURIER ANENUE EAST
OTTAWA, ON

Title

PLANTING PLAN

Project No.
16041789

Scale
1:100

Drawing No.

Sheet

Revision

L101

2 of 6

2

W:\active\16041789\planting\drawing\16041789_L8.dwg
24/01/24 11:41 AM By: Acar, Chadiel

ORIGINAL SHEET - ARCH D

PLANTING SCHEDULE - L200

QUANTITIES KEY	BOTANICAL NAME	COMMON NAME	SIZE AT PLANTING	REMARKS
ORNAMENTAL GRASSES - REFER TO DETAIL 6/L602				
10	PVC <i>Panicum virgatum</i> "Cheyenne Sky"	Cheyenne Sky Switchgrass	1 Gallon	Potted; Plant at 500mm o.c.
GREENROOF PERENNIALS - REFER TO DETAIL 2/L602				
78.5 Sqm	M1 <i>Sedum spp.</i>	Stonecrop	Plug	80% Red color sedums
120.2 Sqm	M2 <i>Sedum spp.</i>	Stonecrop	Plug	70% purple color sedum
35.5 Sqm	M3 <i>Sedum spp.</i>	Stonecrop	Plug	80% yellow color sedum
115 Sqm	M4 <i>Sedum spp.</i>	Stonecrop	Plug	80% green color sedum

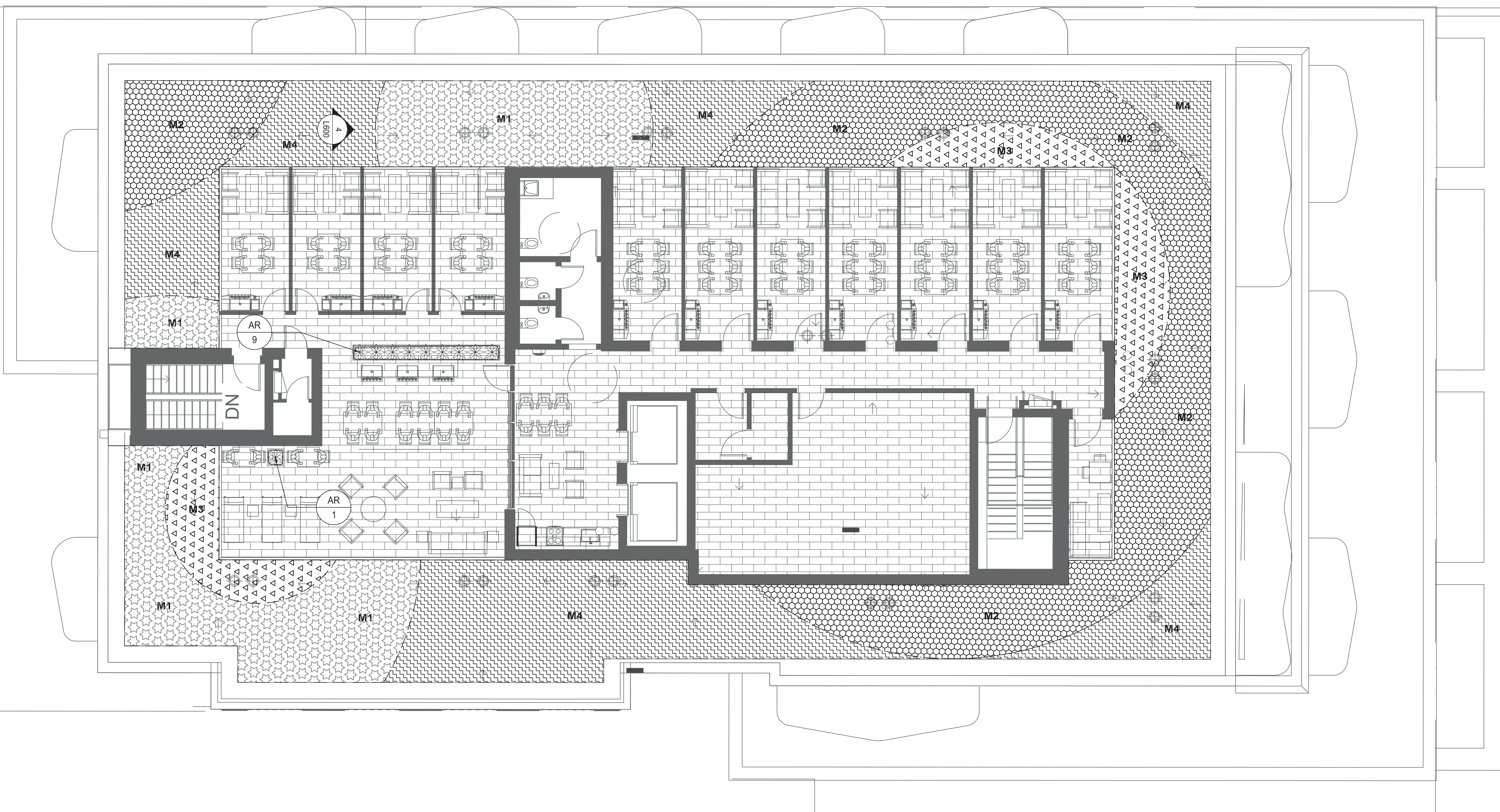


Stantec Consulting Ltd.
 300 - 1331 Clyde Avenue
 Ottawa ON
 Tel. 613.722.4420
 www.stantec.com

Copyright Reserved
 The Contractor shall verify and be responsible for all dimensions. DO NOT scale the drawing - any errors or omissions shall be reported to Stantec without delay.
 The Copyrights to all designs and drawings are the property of Stantec. Reproduction or use for any purpose other than that authorized by Stantec is forbidden.

Legend

- PROPOSED PLANT MIX 1
- PROPOSED PLANT MIX 2
- PROPOSED PLANT MIX 3
- PROPOSED PLANT MIX 4
- PROPOSED ORNAMENTAL GRASSES
- PROPOSED PAVERS TYPE 2



Notes

5	ISSUED FOR CITY REVIEW	CA	KP	24.01.31
4	IRE-ISSUED FOR ZBLA	CA	KP	23.11.15
3	ISSUED FOR ZBLA	CA	KP	23.08.18
2	ISSUED FOR CITY REVIEW	CA	KP	23.08.04
1	ISSUED FOR UDRP	CA	KP	23.06.22
Revision		By	Appd.	YY.MM.DD
File Name:	160410406	CA	KP	KP
		Dwn.	Chkd.	Dsgn.
				YY.MM.DD

Permit-Seal



Client/Project
 ALL SAINTS DEVELOPMENT LP

WINDMILL
 330 LAURIER ANENUE EAST
 OTTAWA, ON

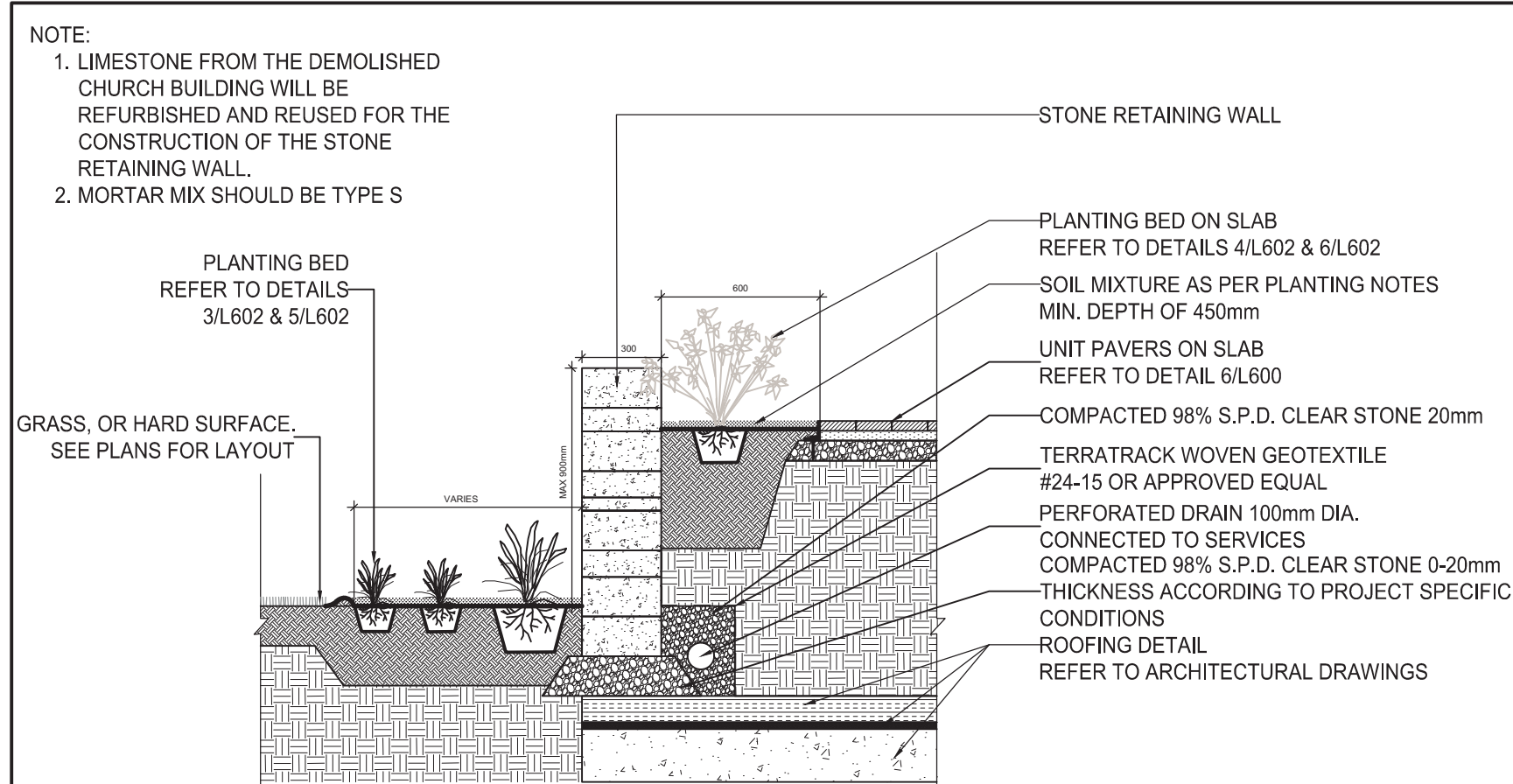
Title
 GREEN ROOF
 LANDSCAPE PLAN

Project No.	Scale	0	750	2250	3750mm
160401789	1:75				
Drawing No.	Sheet			Revision	

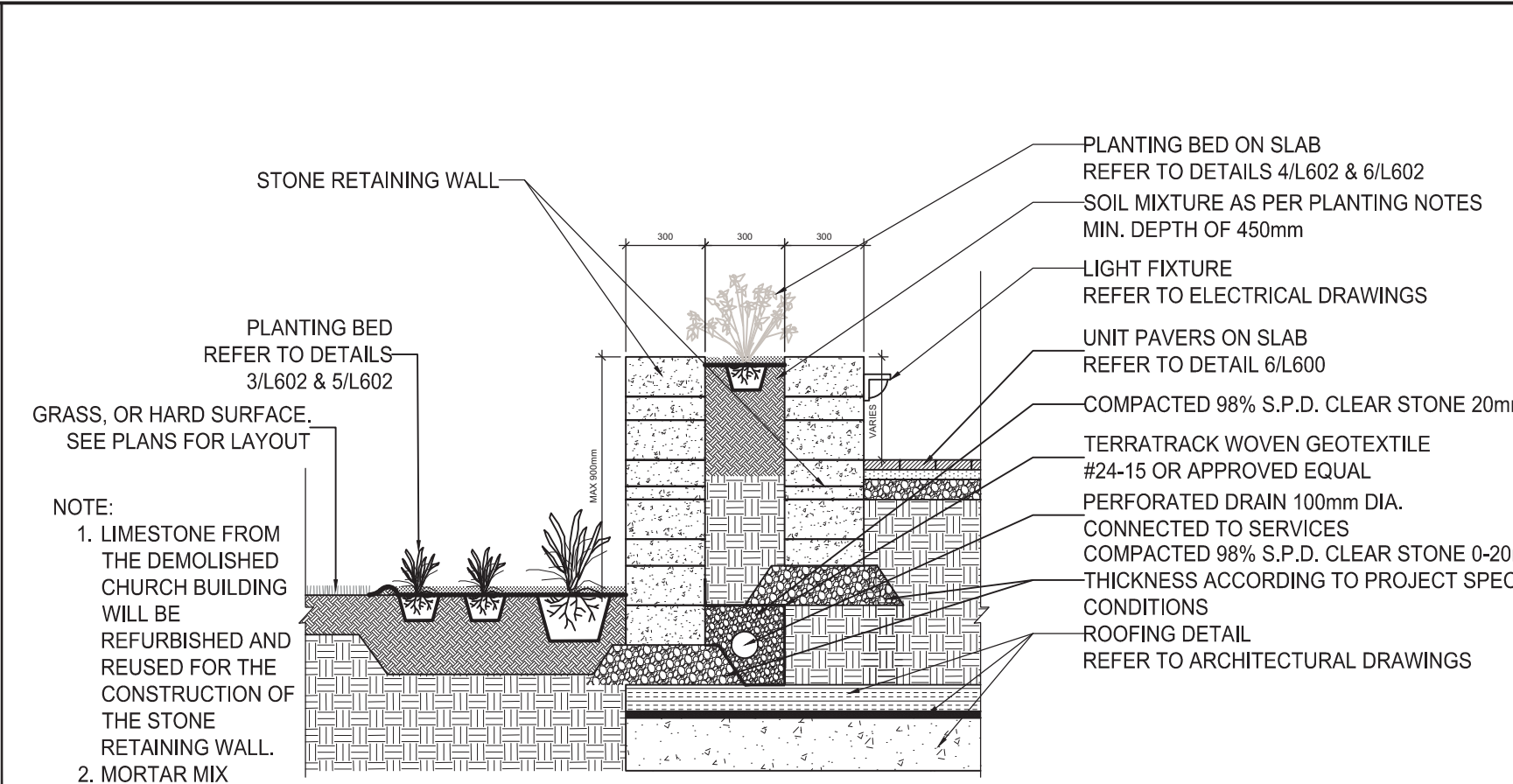
L200

3 of 6

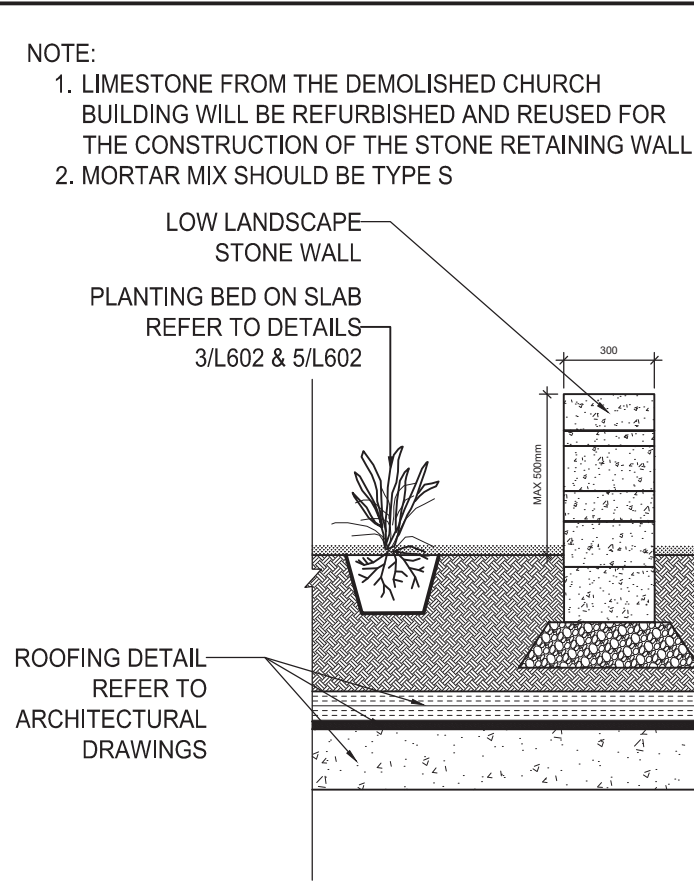
5



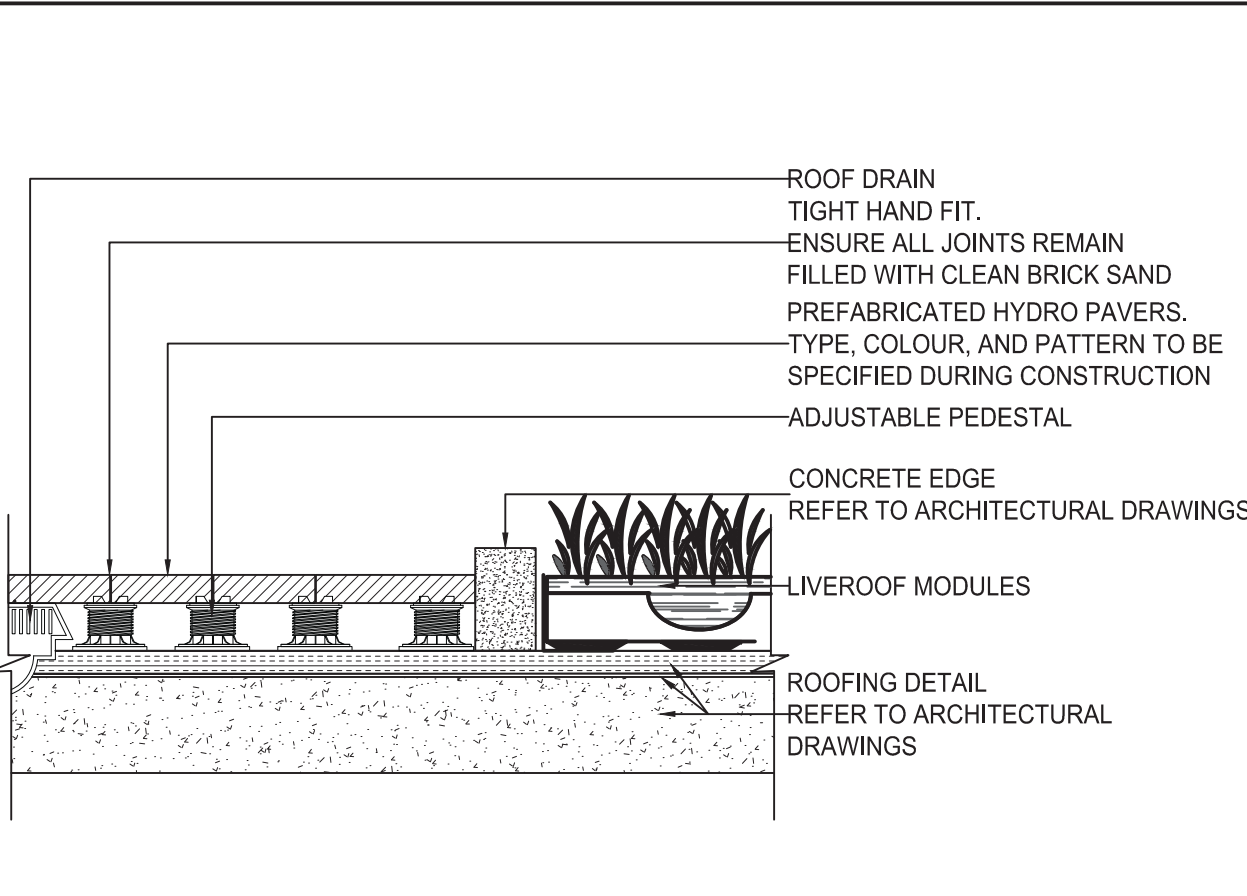
1 SECTION 1
1:25



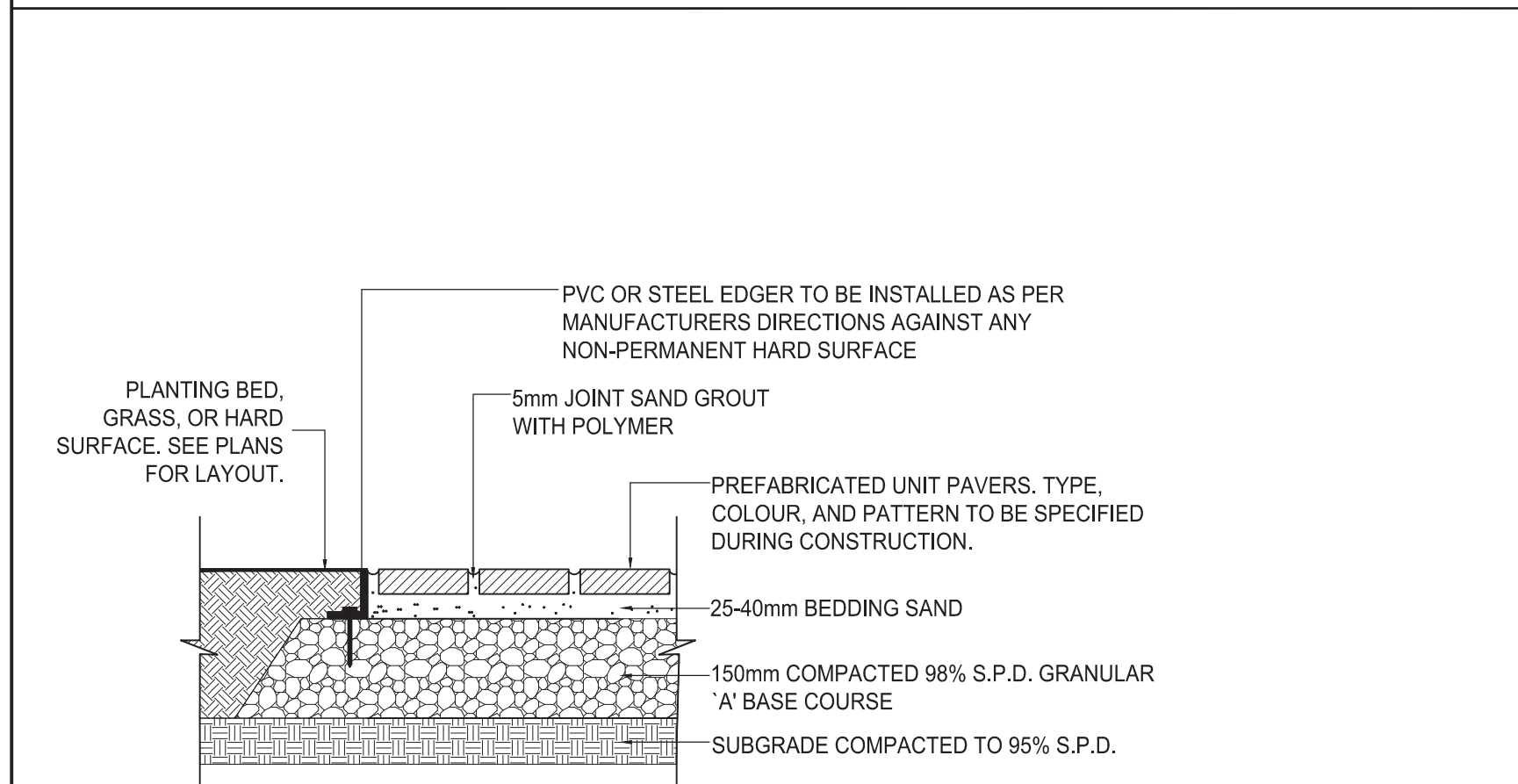
2 SECTION 2
1:25



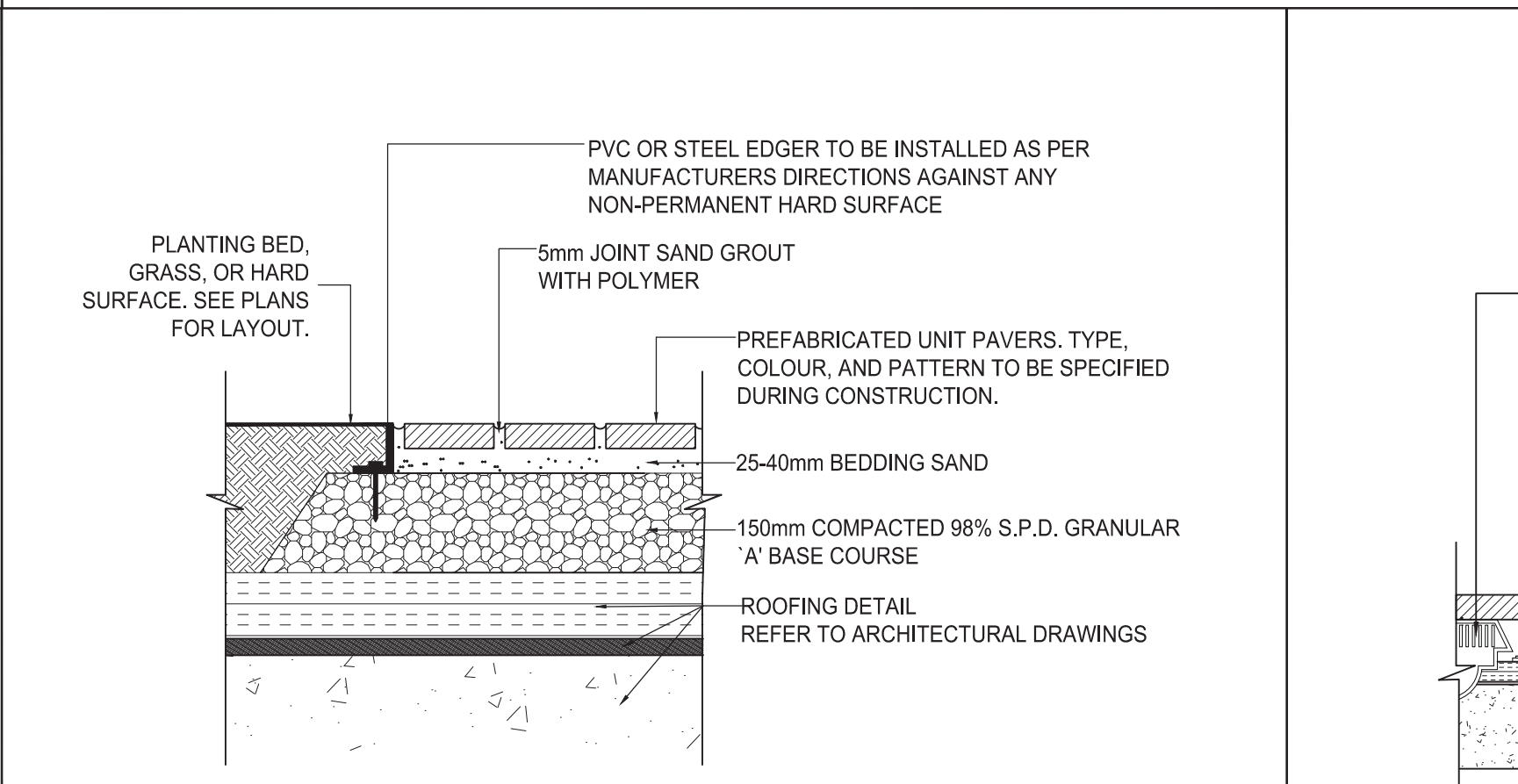
3 SECTION 3
1:25



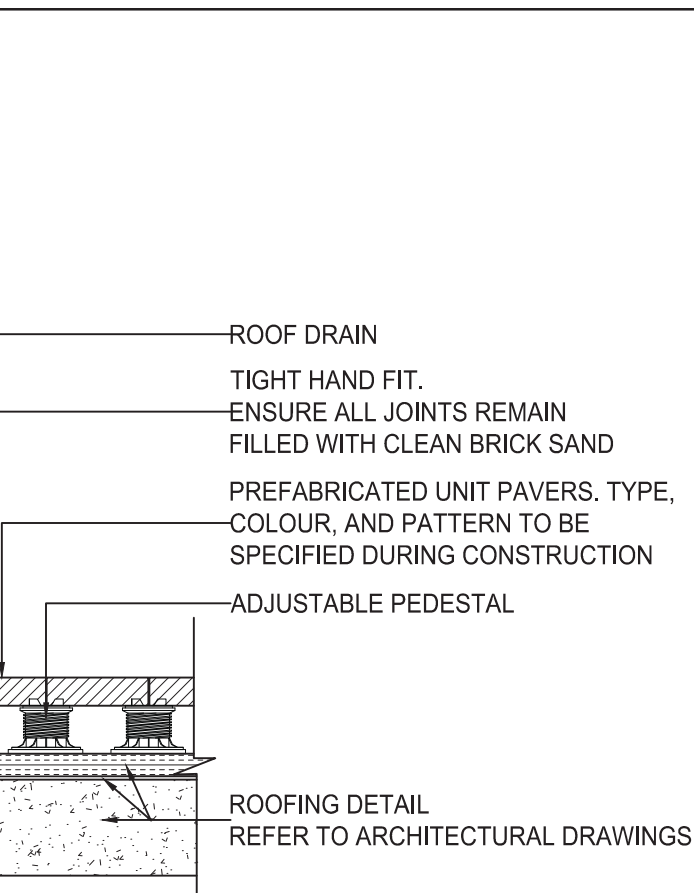
4 SECTION 4
1:25



5 UNIT PAVING
1:10

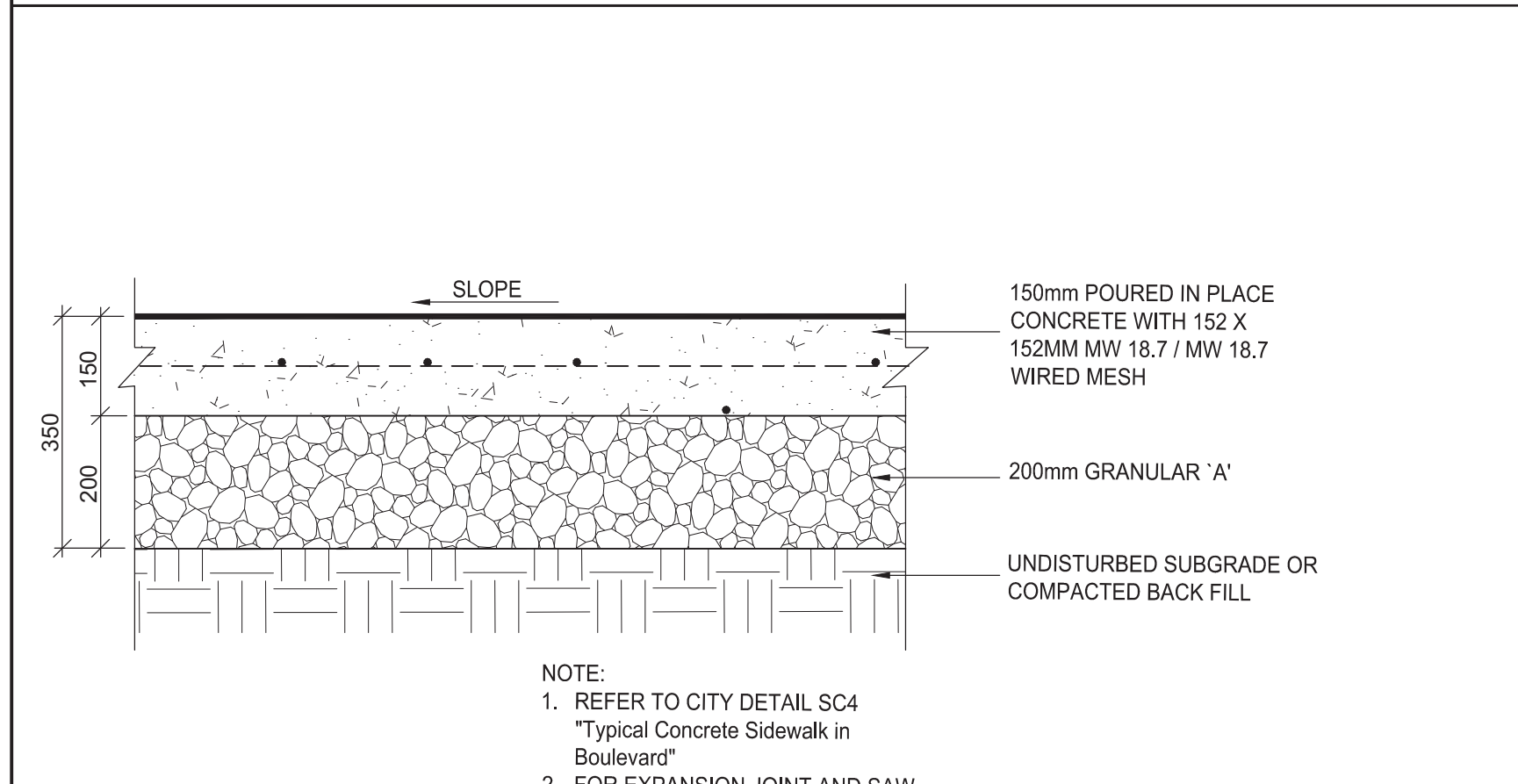


6 UNIT PAVING ON SLAB
1:10

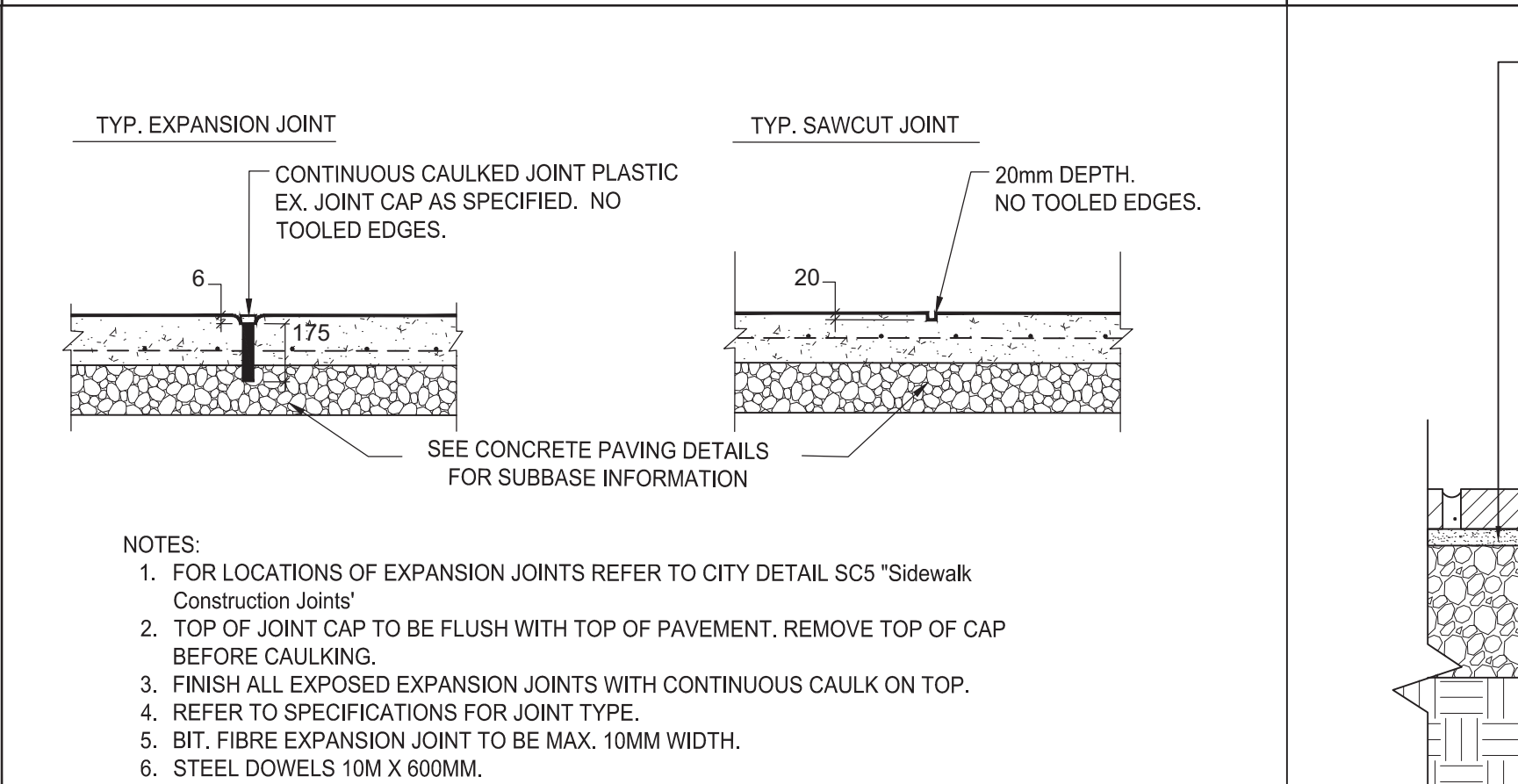


7 UNIT PAVING ON PEDESTAL - ROOF
1:10

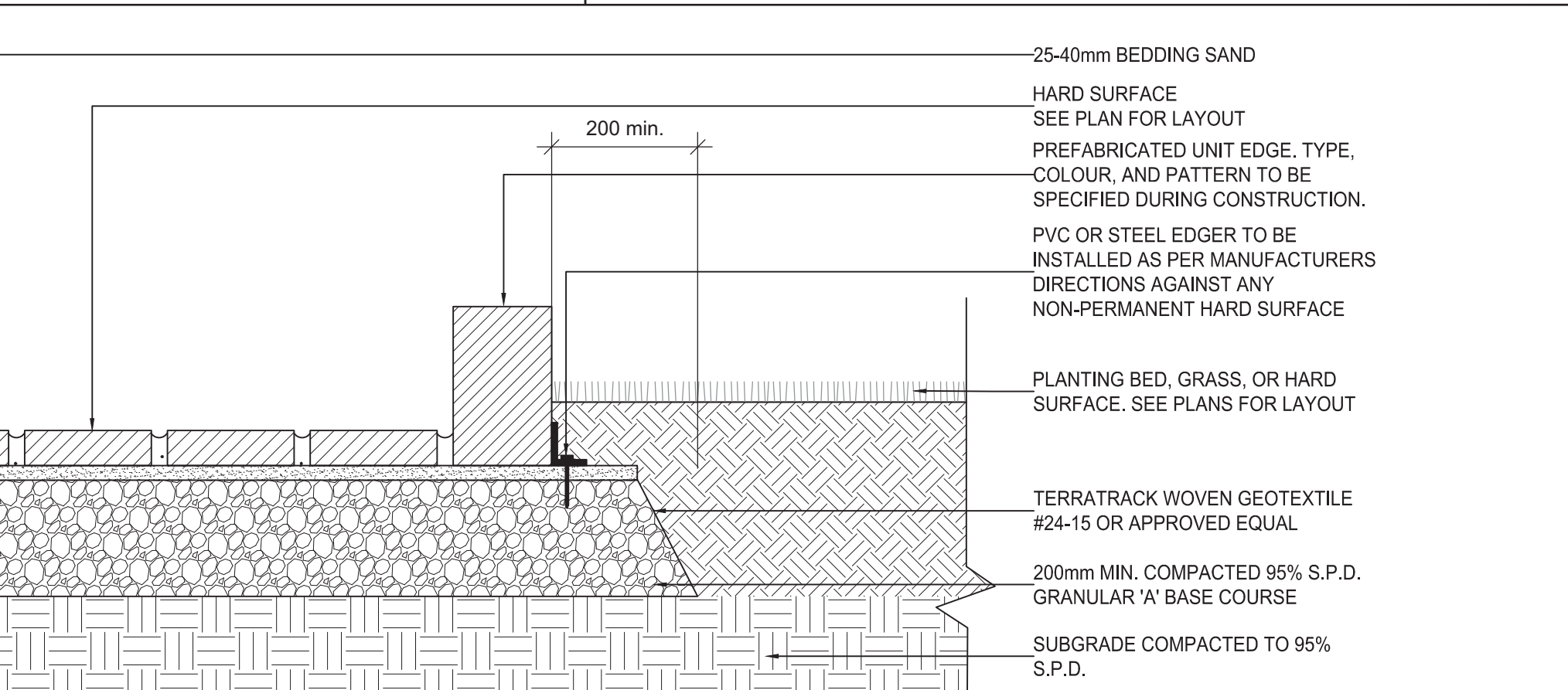
- PAVING NOTES**
- BEDDING SAND SHALL BE MANUFACTURED SAND FOR BEDDING. IT SHALL BE HARD, DURABLE, CRUSHED STONE PARTICLES, CONFORMING TO GRADATION OF CONCRETE SAND AS SPECIFIED IN CSA A23.1. DO NOT USE LIMESTONE SCREENING, STONE DUST OR JOINT SAND FOR BEDDING SAND.
 - JOINT SAND SHALL BE HARD, DURABLE ANGULAR PARTICLES, FREE FROM CLAY LUMPS, CEMENTATION, ORGANIC MATERIAL, FROZEN MATERIAL AND OTHER DELETERIOUS MATERIALS. JOINT SAND SHALL FILL SPACES BETWEEN PAVERS.
 - PASS MECHANICAL PLATE VIBRATOR OVER UNIT PAVING TO ACHIEVE COMPACTION OF SAND IN JOINTS. ENSURE JOINTS ARE FULL AT COMPLETION OF COMPACTION.
 - SURFACE OF FINISHED PAVEMENT SHALL BE FREE FROM DEPRESSIONS EXCEEDING 3mm AS MEASURED WITH 3m STRAIGHT EDGE.
 - ALL MEASUREMENTS ARE IN MILLIMETERS UNLESS STATED OTHERWISE.



8 CONCRETE PAVEMENT DETAIL
1:10



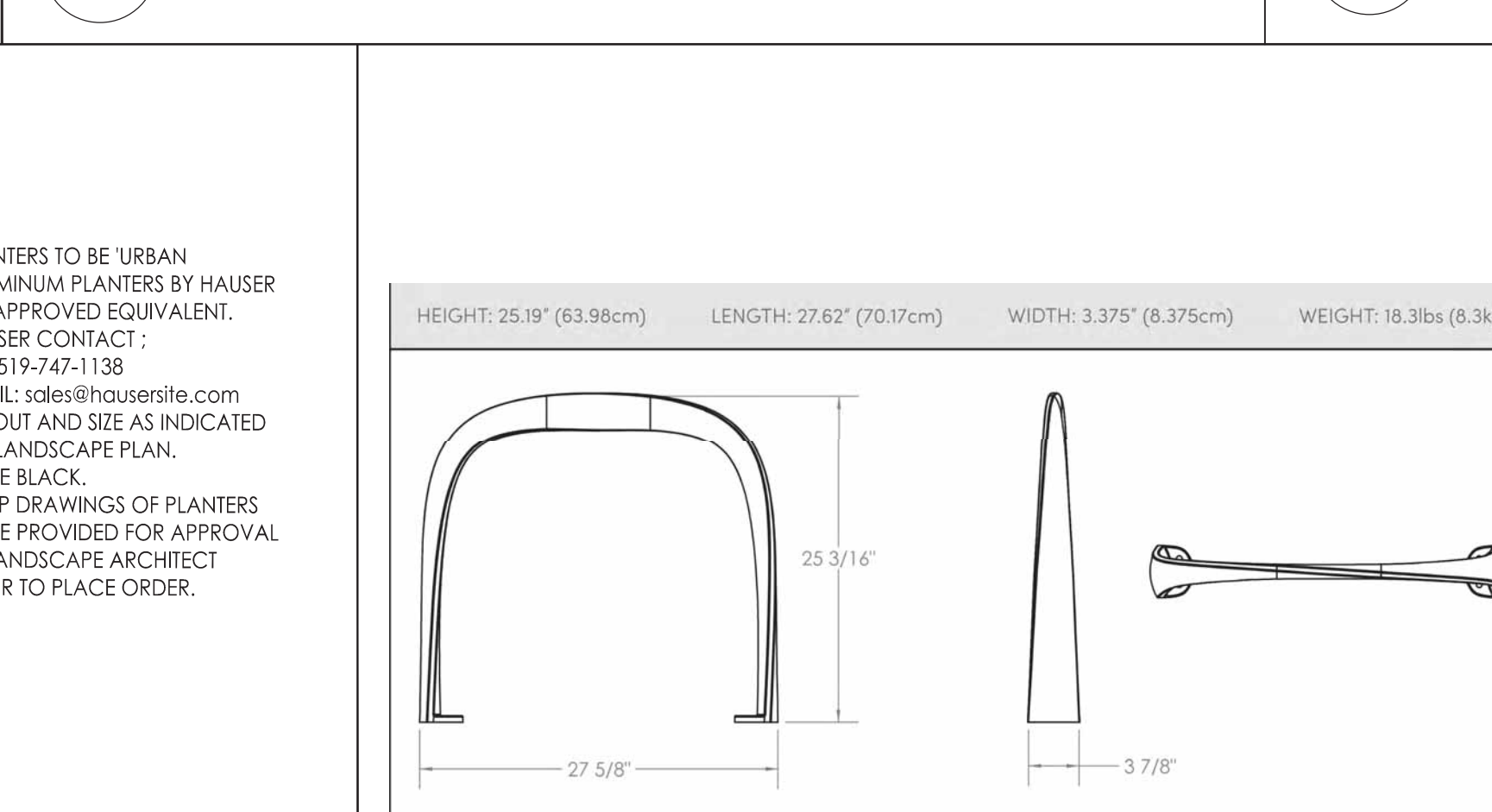
9 CONCRETE JOINTS DETAIL
1:20



10 PRECAST EDGE UNIT DETAIL
1:10



11 RECTANGULAR PLANTERS - ROOF
N.T.S.



12 BIKE RACK
N.T.S.



1600 SERIES
N.T.S.

Revision	By	Appd.	YY.MM.DD
2	CA	KP	24.01.31
1	CA	KP	23.01.15
1	CA	KP	23.04.25

Permit-Seal



Client/Project
ALL SAINTS DEVELOPMENT LP

WINDMILL
330 LAURIER ANENUE EAST
OTTAWA, ON

Title
LANDSCAPE DETAILS & NOTES - I

Project No.	Scale	
160401789	AS NOTED	
Drawing No.	Sheet	Revision
L600	4 of 6	2

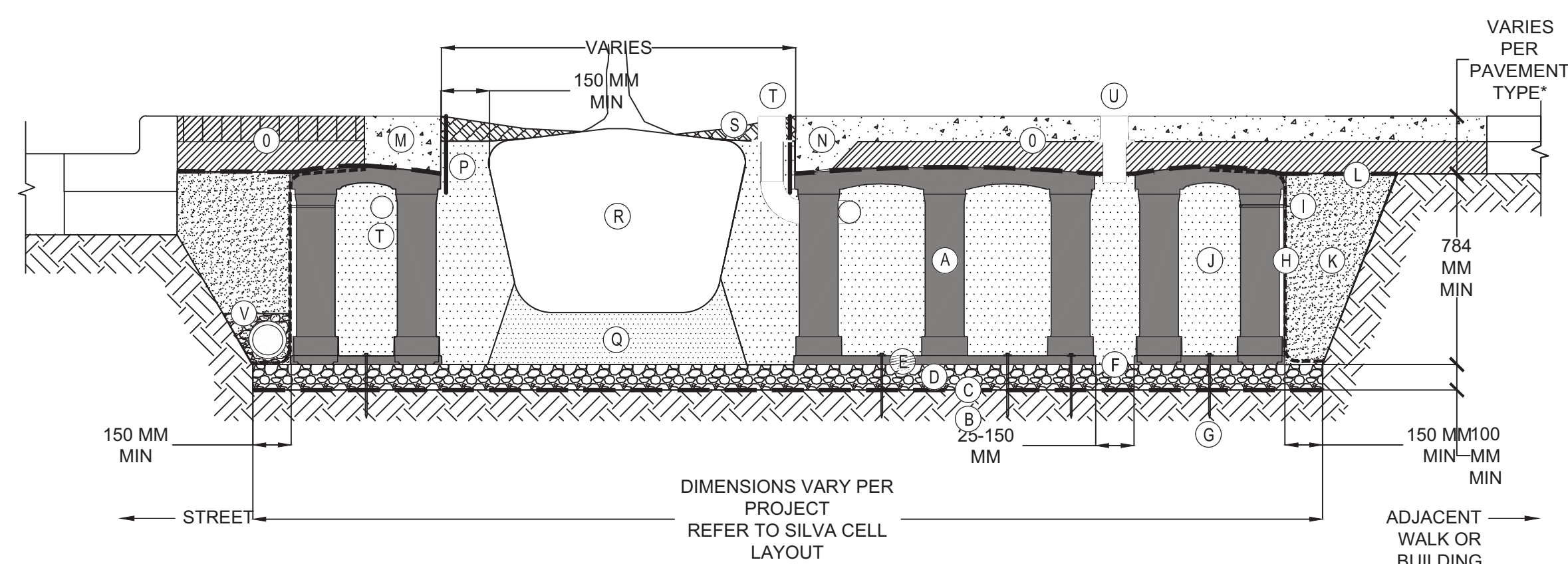
W:\active\160401789\landscaping\drawing\160401789_LDETAIL.dwg
24/01/2024 12:52 PM by Acar, Chancel

- A SILVA CELL SYSTEM (DECK, BASE, AND POSTS)
- B SUBGRADE, COMPACTED
- C GEOTEXTILE FABRIC, PLACED ABOVE SUBGRADE
- D 100 MM MIN AGGREGATE SUB BASE, COMPACTED TO 95% PROCTOR
- E SILVA CELL BASE SLOPE, 10% MAX
- F 25 TO 150 MM SPACING BETWEEN SILVA CELLS AT BASE
- G ANCHORING SPIKES - CONTACT DEEPROOT FOR ALTERNATIVE
- H GEOGRID, WRAPPED AROUND PERIMETER OF SYSTEM, WITH 150 MM TOE (OUTWARD FROM BASE) AND 300 MM EXCESS (OVER TOP OF DECK)
- I CABLE TIE, ATTACHING GEOGRID TO SILVA CELL AT BASE OF UPPER LEG FLARE, AS NEEDED
- J PLANTING SOIL, PER PROJECT SPECIFICATIONS, PLACED IN LIFTS AND WALK-IN COMPACTED TO 75-85% PROCTOR
- K COMPACTED BACKFILL, PER PROJECT SPECIFICATIONS
- L GEOTEXTILE FABRIC TO EDGE OF EXCAVATION
- M RIBBON CURB AT TREE OPENING (TO BE USED WITH PAVERS OR ASPHALT)
- N THICK PAVEMENT EDGE AT TREE OPENING (TO BE USED WITH CONCRETE)
- O PAVEMENT AND AGGREGATE BASE PER PROJECT *
- P DEEPROOT ROOT BARRIER, 300 OR 450 MM, DEPTH DETERMINED BY THICKNESS OF PAVEMENT SECTION, INSTALL DIRECTLY ADJACENT TO CONCRETE EDGE RESTRAINT
- Q PLANTING SOIL BELOW ROOT BALL, COMPACTED WELL TO PREVENT SETTLING
- R ROOT BALL
- S TREE OPENING TREATMENT, PER PROJECT SPECIFICATIONS
- T DEEPROOT WATER AND AIR VENT-ROOTBALL, WHEN REQUIRED
- U DEEPROOT WATER AND AIR VENT, WHEN REQUIRED
- V UNDERDRAIN SYSTEM, WHEN REQUIRED (LOCATION AND DETAILS BY OTHERS)

*MINIMUM PAVEMENT PROFILE OPTIONS TO MEET CSA-S6 87.5kN

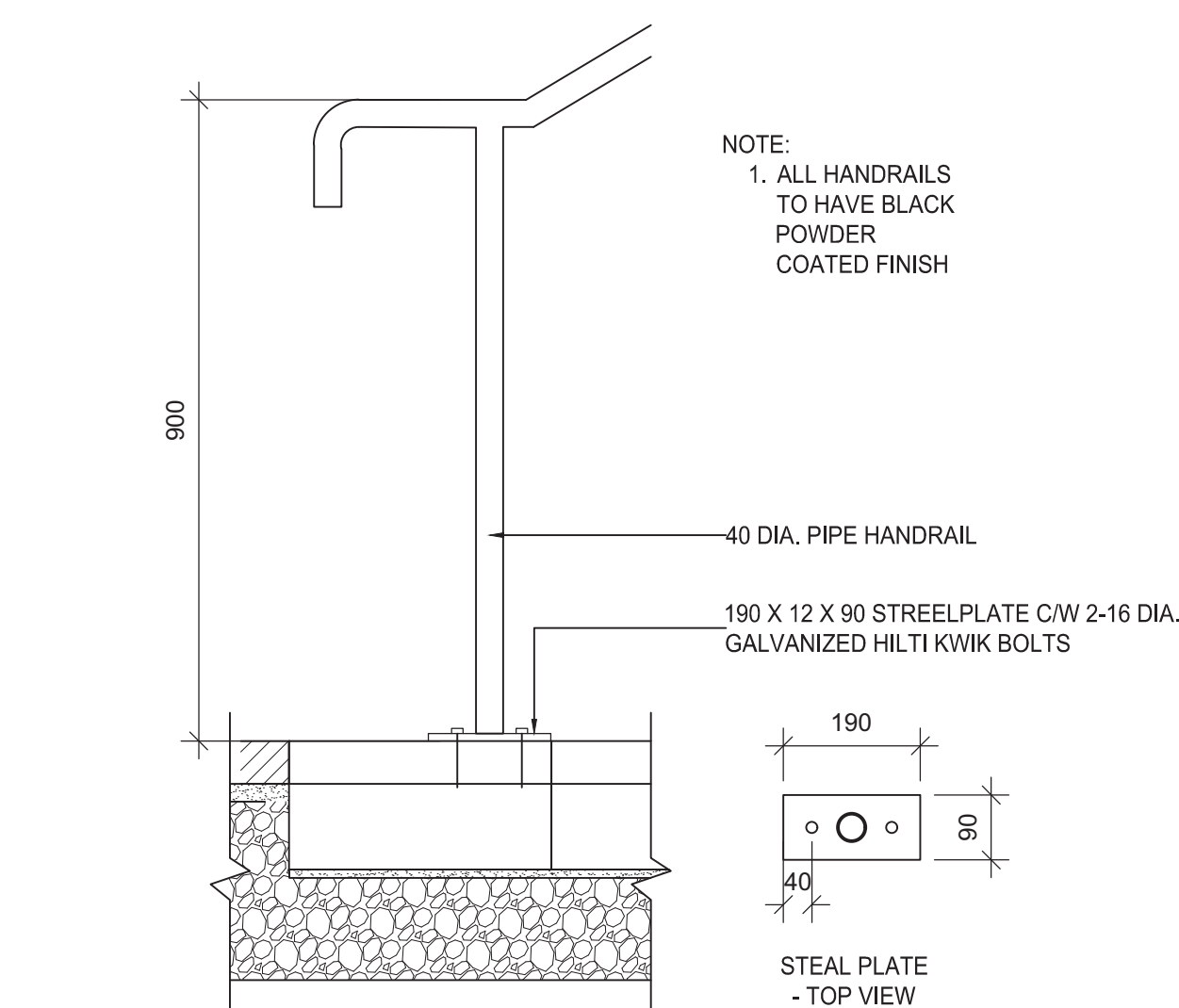
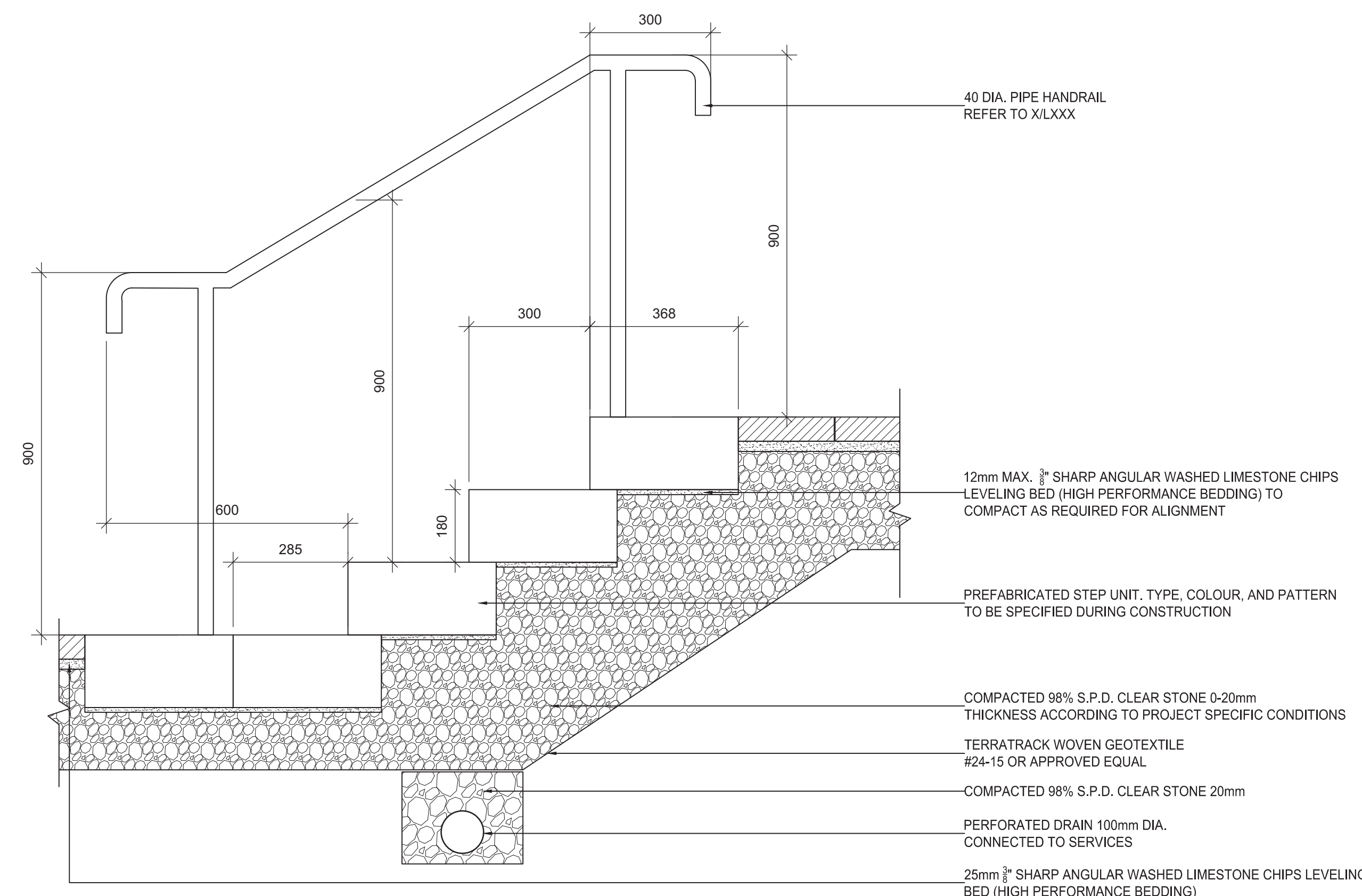
PAVEMENT	+ AGGREGATE
BASE COURSE	
100 MM CONCRETE	+ 100 MM AGGREGATE
75 MM PAVER	+ 300 MM AGGREGATE
100 MM ASPHALT	+ 300 MM AGGREGATE
65 MM PAVER	+ 125 MM CONCRETE

- NOTES
- EXCAVATION SHALL BE DONE IN ACCORDANCE WITH ALL APPLICABLE HEALTH AND SAFETY REGULATIONS
 - INSTALLATION TO BE COMPLETED IN ACCORDANCE WITH MANUFACTURER'S SPECIFICATIONS
 - PROVIDE SUPPLEMENTAL IRRIGATION
 - DO NOT SCALE DRAWINGS

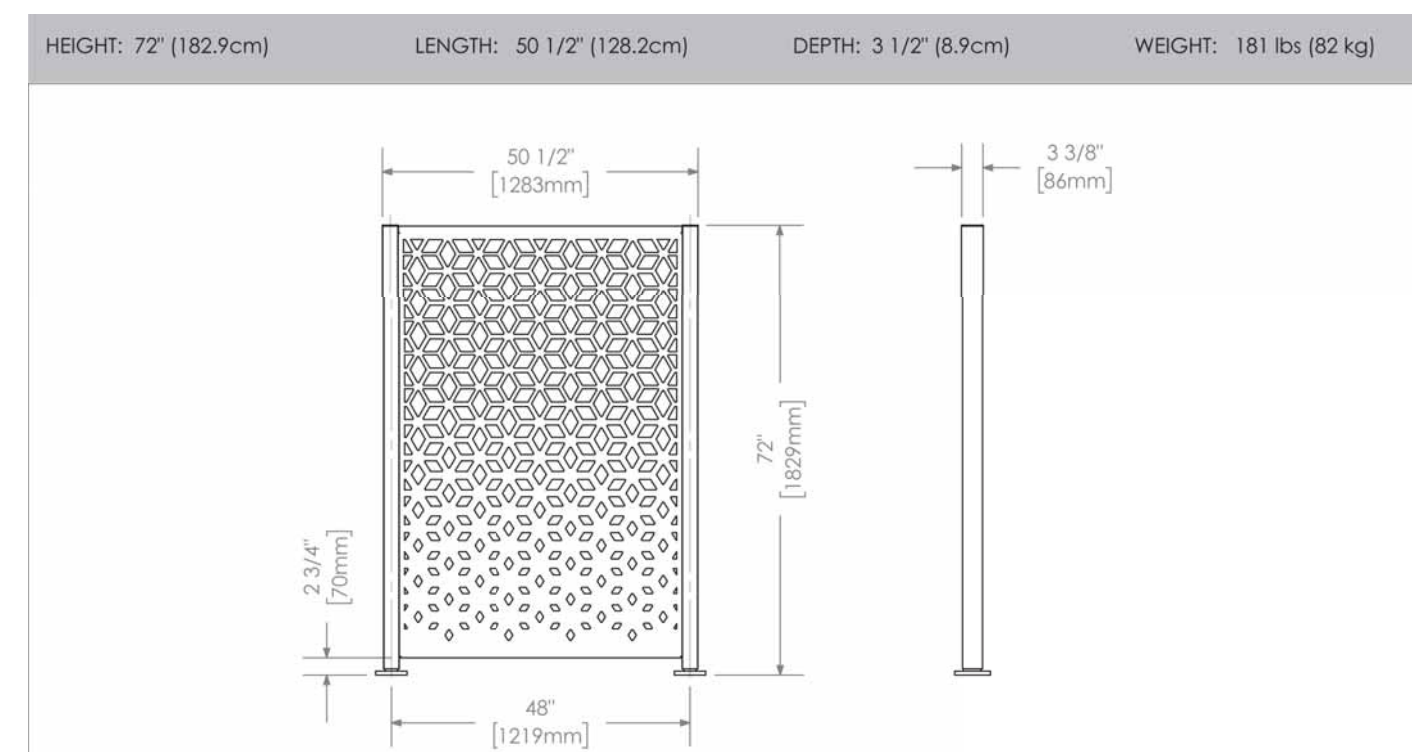


1 SYLVA CELL SYSTEM 2X
N.T.S.

2 PRECAST STEP UNIT DETAIL
1:10

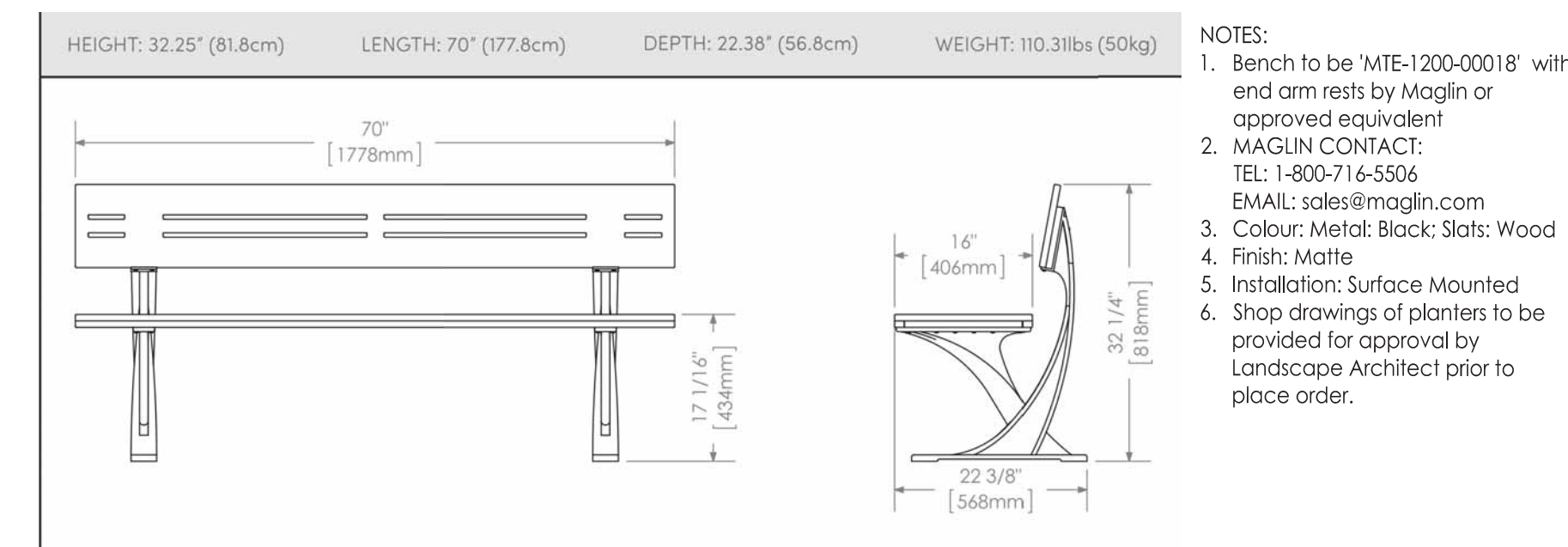


3 STAIR HANDRAIL
1:10



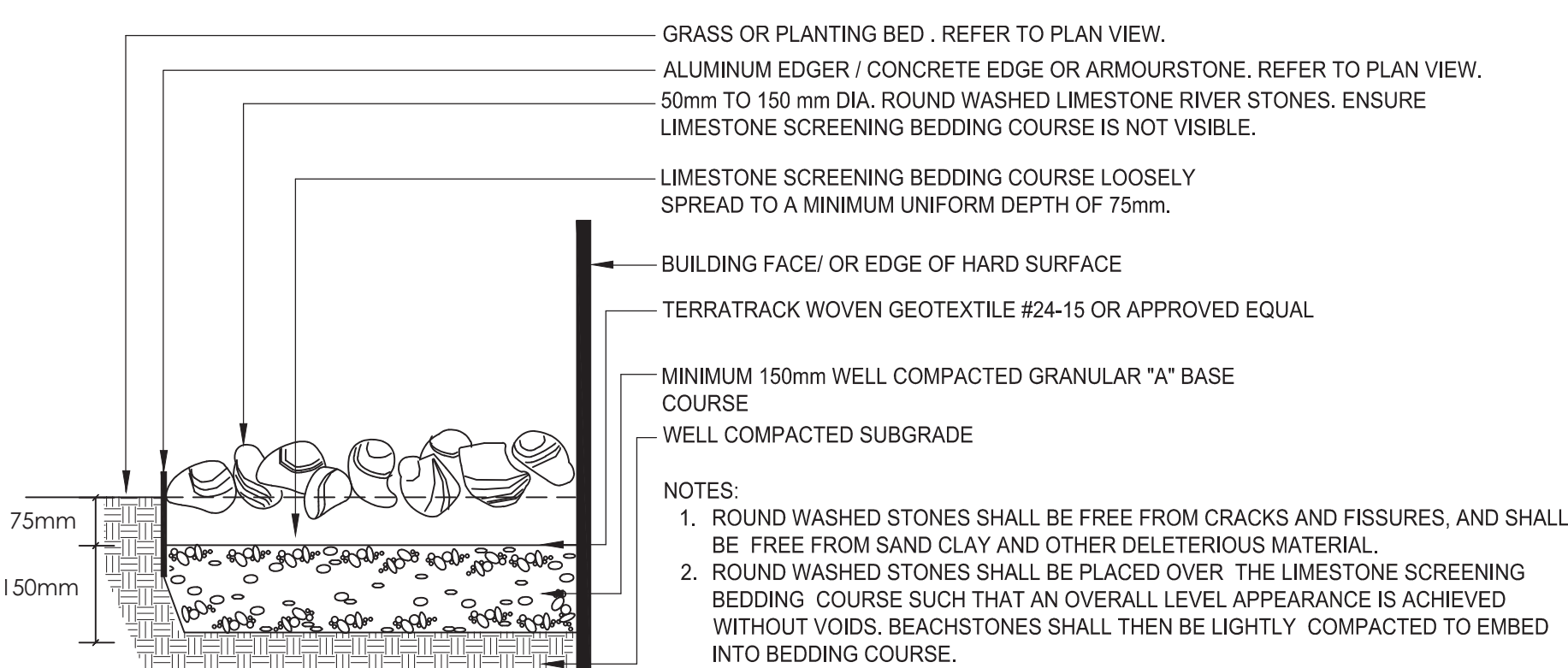
- NOTES:
- Privacy Screen to be 'Flex Panels' by Maglin or approved equivalent
 - MAGLIN CONTACT: TEL: 1-800-716-5506 EMAIL: sales@maglin.com
 - Layout and size as indicated on Landscape Plan, panels to be used to be 1.8m high.
 - Pattern: Fusion
 - Colour: Black
 - Finish: Matte
 - Installation: Surface Mounted
 - Shop drawings of privacy screen to be provided for approval by Landscape Architect prior to place order.

4 PRIVACY SCREEN
N.T.S.



- NOTES:
- Bench to be 'MTE-1200-0018' with end arm rests by Maglin or approved equivalent
 - MAGLIN CONTACT: TEL: 1-800-716-5506 EMAIL: sales@maglin.com
 - Colour: Metal: Black; Slats: Wood
 - Finish: Matte
 - Installation: Surface Mounted
 - Shop drawings of planters to be provided for approval by Landscape Architect prior to place order.

5 BENCH
N.T.S.



6 RIVERWASHED STONES
1:10

Revision	By	Appd.	YY.MM.DD
2	CA	KP	24.01.31
1	CA	KP	23.01.15

Permit-Seal

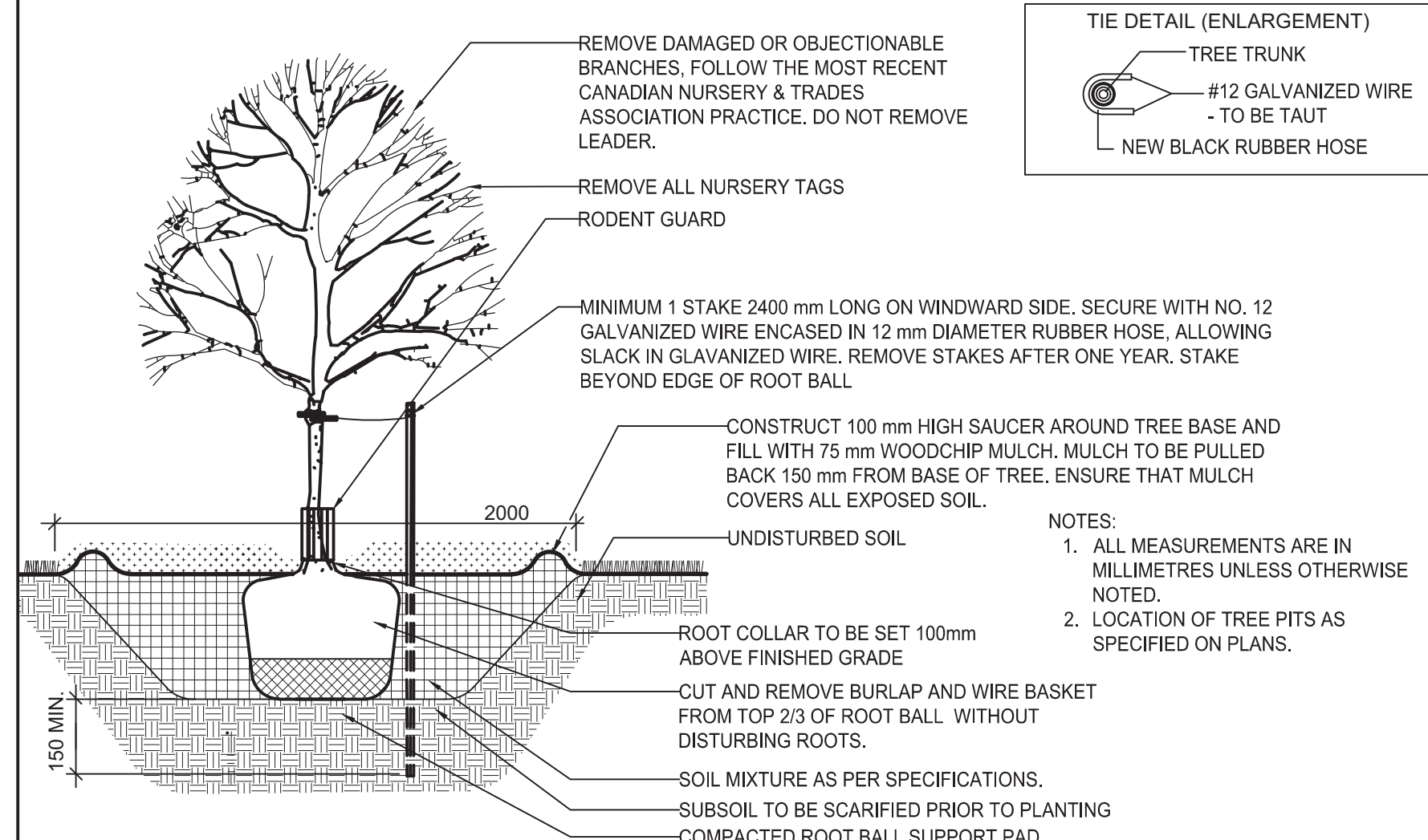


Client/Project
ALL SAINTS DEVELOPMENT LP

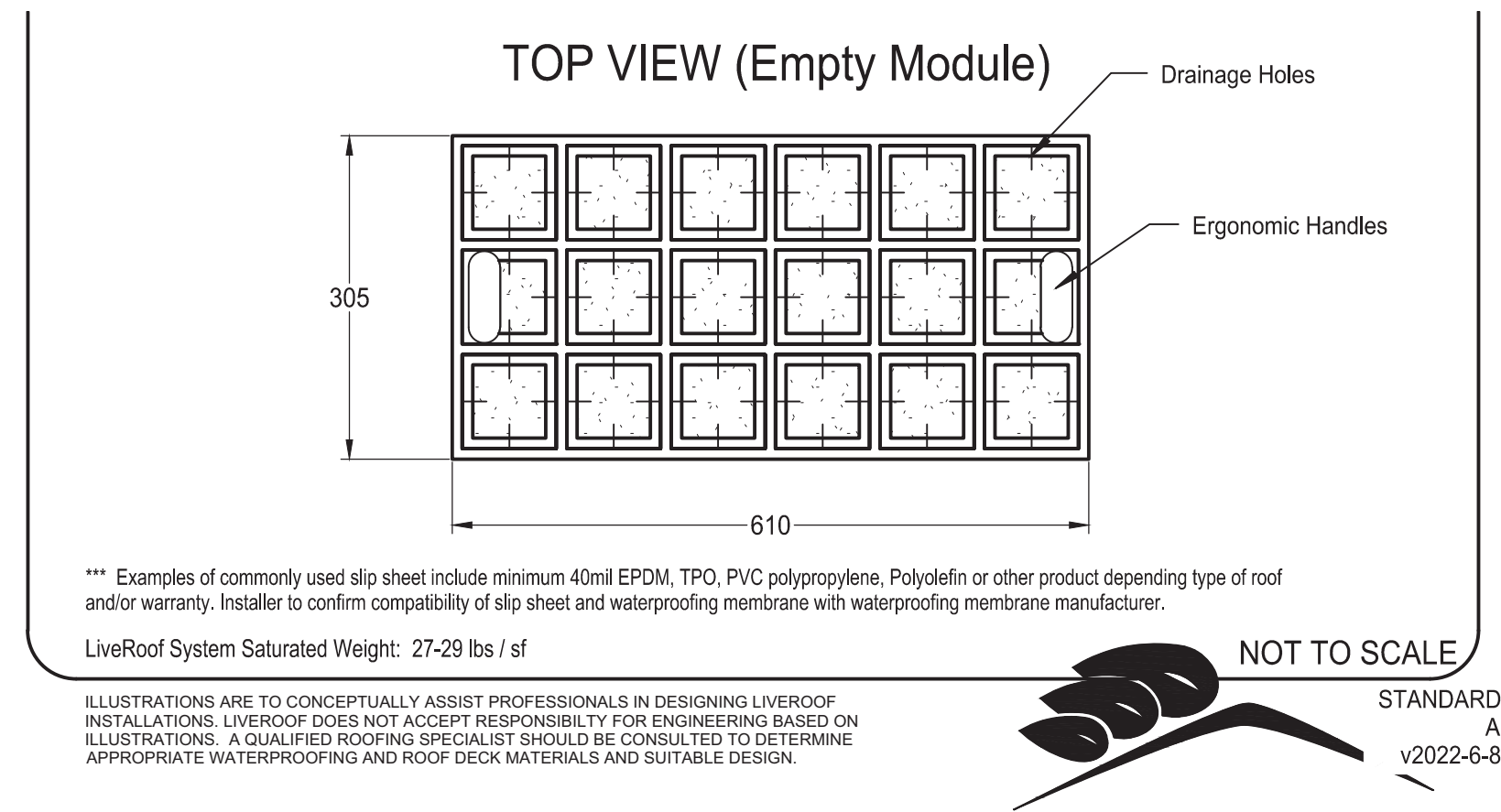
WINDMILL
330 LAURIER ANENUE EAST
OTTAWA, ON

Title
LANDSCAPE DETAILS & NOTES - II

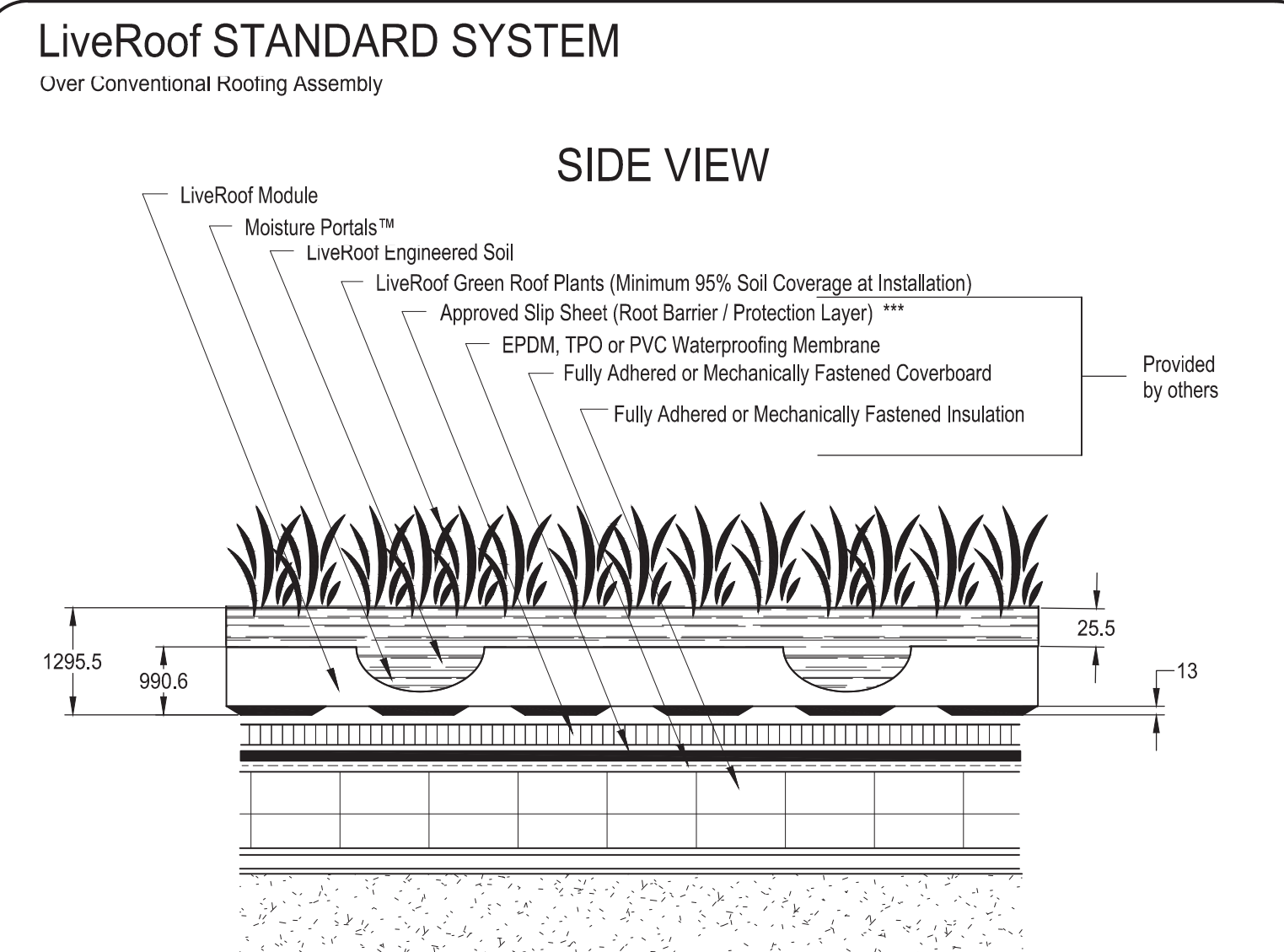
Project No.	Scale	
160401789	AS NOTED	
Drawing No.	Sheet	Revision



1 DECIDUOUS TREE PLANTING
N.T.S.

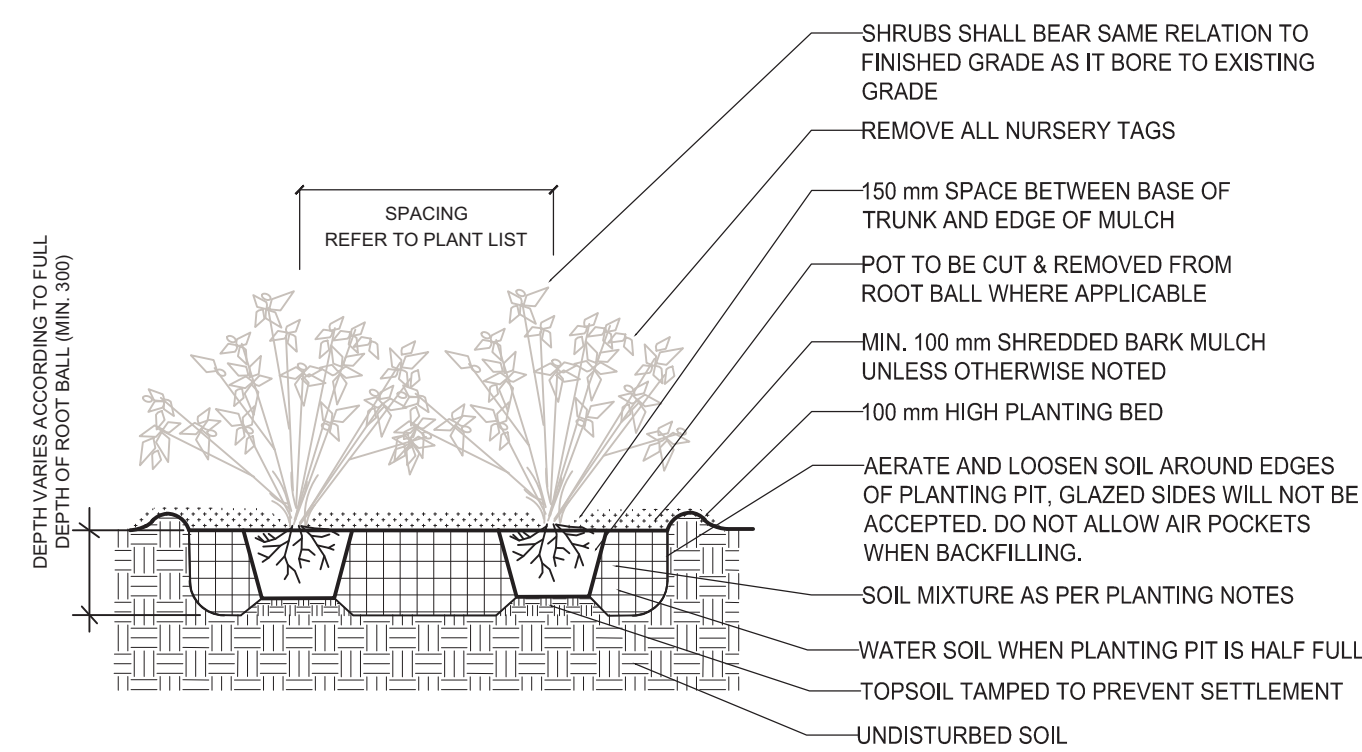


2 LIVEROOF STANDARD SYSTEM - ROOF
N.T.S.

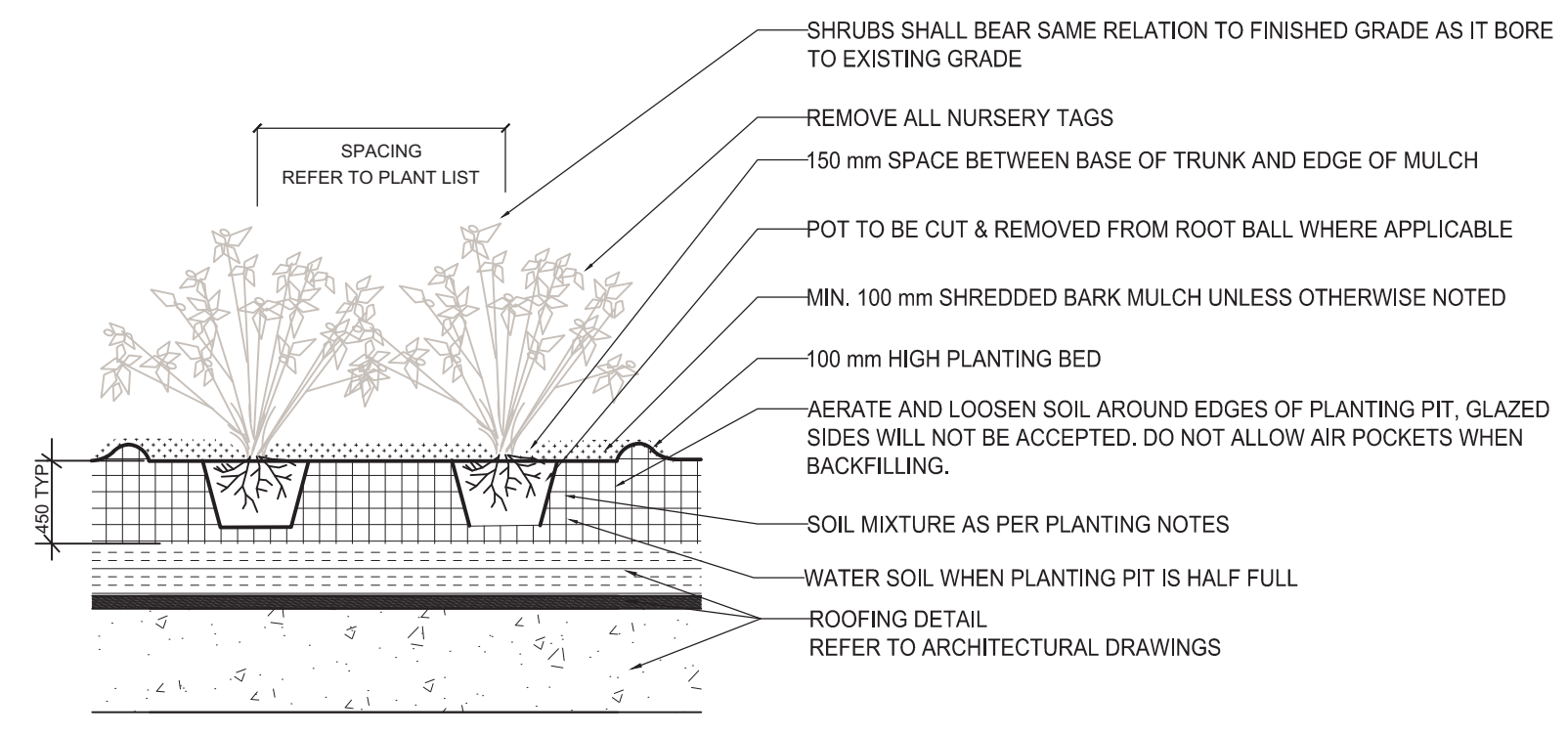


PLANTING NOTES

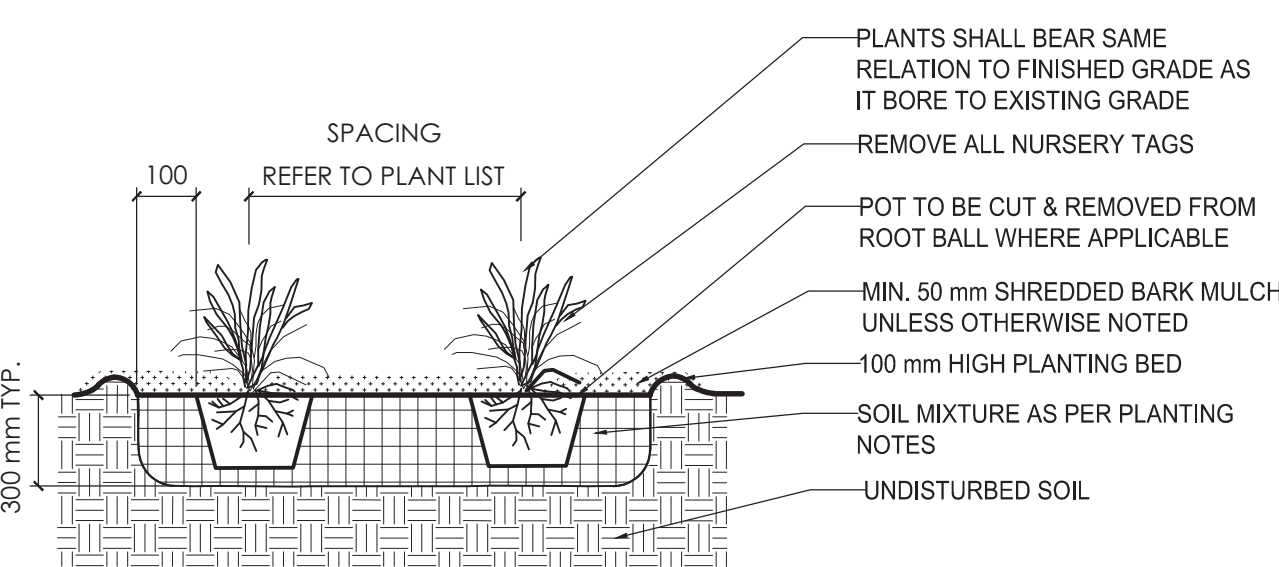
- THE DETAILS ON THIS SHEET DO NOT REPRESENT ANY PARTICULAR SPECIES.
- TREES AND SHRUBS AS INDICATED IN THE DETAILS REPRESENT BOTH CONIFEROUS AND DECIDUOUS SPECIES.
- MATERIAL PLANTED IN GROUP SHALL BE SET IN CONTINUOUS PLANTING BEDS.
- CENTRE LINE OF SHRUBS SHALL NOT BE CLOSER THAN 2.4m FROM BUILDING FACE TO PROTECT BUILDING FOOTINGS AND INSULATION.
- PRUNING - TO SUIT SPECIES - PRUNE BRANCHES BY 1/3 TO REMOVE DAMAGED OR OBJECTIONABLE BRANCHES FOLLOWING PROPER HORTICULTURAL PRACTICE. DO NOT PRUNE LEADERS.
- FIRMLY COMPACT BACKFILLED PLANTING MIXTURE TO ELIMINATE AIR POCKETS OR PREVENT SETTLEMENT.
- PLANTING MATERIAL QUALITY STANDARDS:
7.1. ALL PLANT MATERIALS TO CONFORM TO THE CANADIAN NURSERY LANDSCAPE ASSOCIATION FOR VARIETY, SIZE AND CONDITION.
7.2. PLANT MATERIAL COLLECTED FROM WILD SOURCES WILL NOT BE ACCEPTED.
- LANDSCAPE ARCHITECT RESERVES THE RIGHT TO REFUSE ACCEPTANCE OF ANY PLANT DISPLAYING POOR GROWTH HABITS, INJURY OR DISEASE.
- ANY PLANTS THAT DO NOT CONFORM TO THE ABOVE STANDARDS WILL BE PROMPTLY REMOVED FROM THE SITE BY THE CONTRACTOR AND REPLACED WITH MATERIAL OF ACCEPTABLE QUALITY AT NO ADDITIONAL COST TO THE PROJECT.
- TOPSOIL:
8.1. SOIL TEXTURE BASED ON THE CANADIAN SYSTEM OF SOIL CLASSIFICATION TO CONSIST OF:
➢ CLAY: 14-20%
➢ SILT: 0-35%
➢ SAND: 45-70%
➢ ORGANIC MATERIAL: 4-10%
➢ pH: 6-8
8.2. SPREAD TOPSOIL TO FOLLOWING MINIMUM DEPTHS AFTER SETTLEMENTS UNLESS OTHERWISE NOTED ON DETAILS:
➢ 300mm FOR PERENNIALS
➢ 500mm FOR SHRUB BEDS
➢ 1000mm FOR TREE PLANTING
- MULCH:
• MULCH SHALL BE SHREDDED WOOD VARYING IN SIZE FROM 25-125mm IN LENGTH FROM CONIFEROUS TREES.



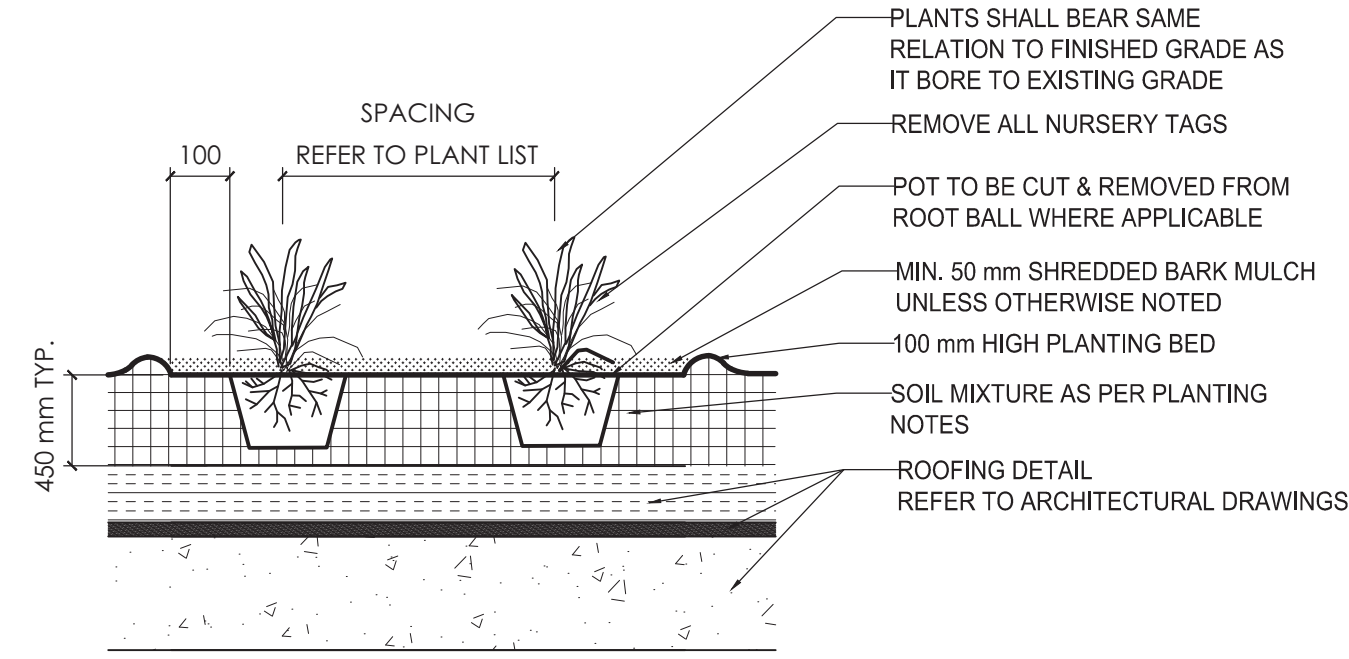
3 SHRUB PLANTING
N.T.S.



4 SHRUB PLANTING ON SLAB
N.T.S.



5 PERENNIAL AND GRASSES PLANTING
N.T.S.



6 PERENNIAL AND GRASSES PLANTING ON SLAB
N.T.S.

2	ISSUED FOR CITY REVIEW	CA	KP	24.01.31
1	ISSUED FOR 66% SUBMISSION	CA	KP	23.01.15
Revision		By	Appd.	YY.MM.DD
File Name:	160410406	CA	KP	KP
		Dwn.	Chkd.	Dgn.
				YY.MM.DD

Permit-Seal



Client/Project
ALL SAINTS DEVELOPMENT LP

WINDMILL
330 LAURIER ANENUE EAST
OTTAWA, ON

Title
LANDSCAPE DETAILS & NOTES - III

Project No.	Scale	
160401789	AS NOTED	
Drawing No.	Sheet	Revision