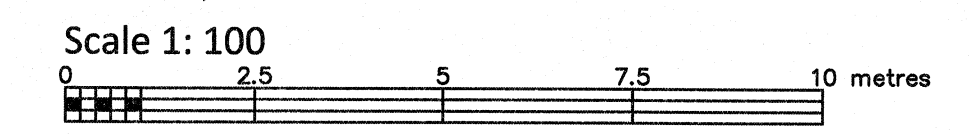


LOTS 47 & 48 REGISTERED PLAN 400 CITY OF OTTAWA

FARLEY, SMITH & DENIS SURVEYING LTD. 2023



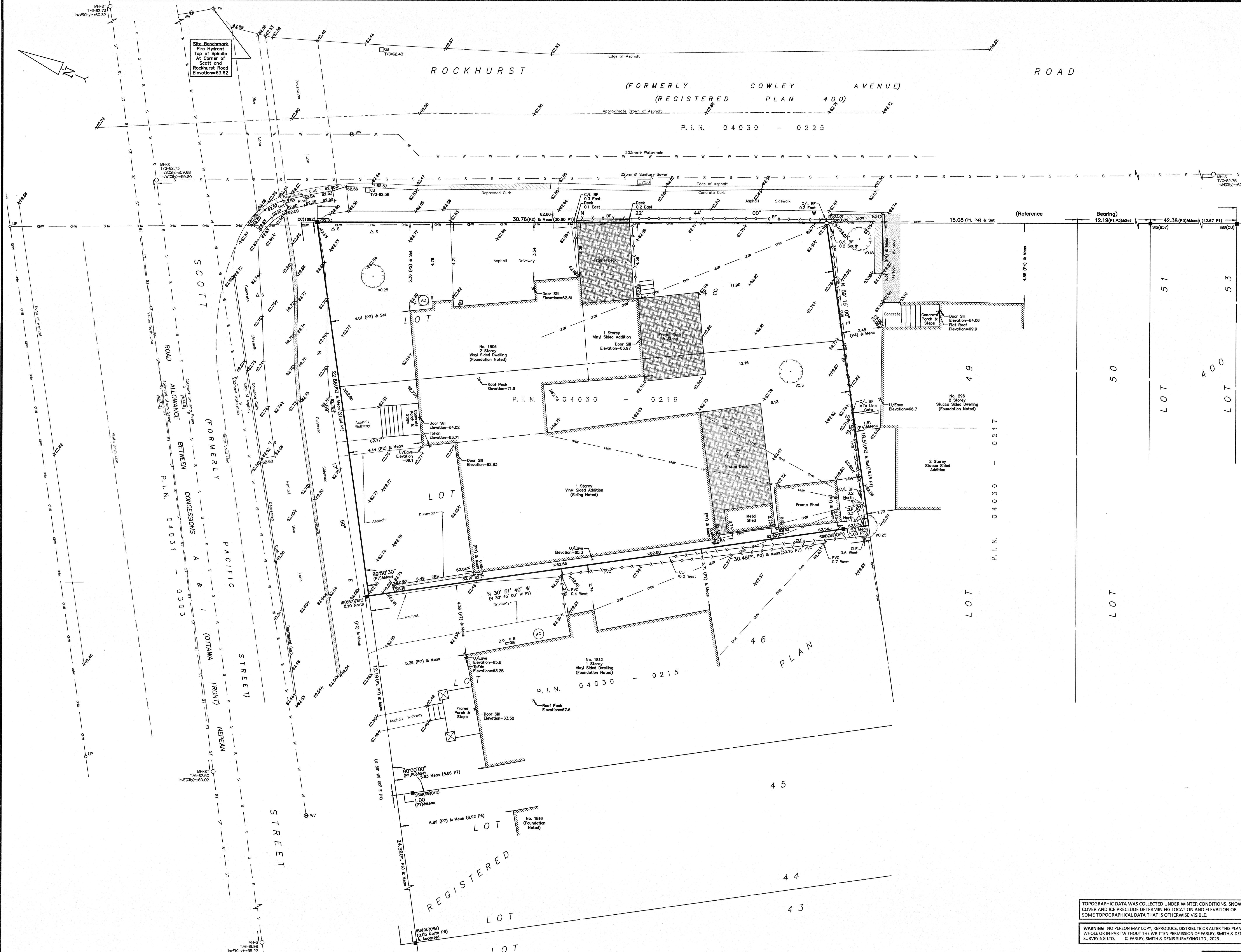
Metric Note: Distances on this plan are in metres and can be converted to feet by dividing by 0.3048.

Bearing Note: Bearings are astronomic and are referred to the westerly limit of Rockhurst Road having a bearing of N 22° 44' 00" W as shown on Registered Plan 400.

Elevation Notes: 1. Elevations shown are geodetic and are referred to Geodetic Datum CGVD-1928:1978. (Monument No. 197534238) 2. It is the responsibility of the user of this information to verify that the job benchmark has not been altered or disturbed and that its relative elevation and description agrees with the information shown on this drawing.

Utility Notes: 1. This drawing cannot be accepted as acknowledging all of the utilities and it will be the responsibility of the user to contact the respective utility authorities for confirmation. 2. Only visible surface utilities were located. 3. Underground utility data derived from City of Ottawa utility sheet reference: L32d & 18164p15. 4. Sanitary and storm sewer grades and inverts were compiled from: City of Ottawa Utility Sheets. 5. A field location of underground plant by the pertinent utility authority is mandatory before any work involving breaking ground, probing, excavating etc.

Notes & Legend table listing symbols for Survey Monument Planted, Survey Monument Found, Standard Iron Bar, Short Standard Iron Bar, Iron Bar, Round Iron Bar, Cut Cross, Witness, Origin Unknown, Measured, Registered Plan 400, Plan by (857) dated April 29, 1992, Plan by (1442) dated September 14, 1994, Plan by (1175) dated August 31, 1982, Plan by (1319) dated July 26, 1989, Plan by (671) dated March 24, 1987, Plan by (SG) dated November 6, 2020, Maintenance Hole (Storm), Maintenance Hole (Sanitary), Underground Storm Sewer, Underground Sanitary Sewer, Underground Water, Overhead Wires, Utility Pole, Anchor, Catch Basin, Fire Hydrant, Water Valve, Gas Meter, Bollard, Sign, Air Conditioner, Diameter, Chain Link Fence, Board Fence, Plastic Vinyl Fence, Concrete Retaining Wall, Stone Retaining Wall, Invert, Top of Grate, Underside of Eave, Top of Foundation, Centreline, Location of Elevations, Top of Concrete Curb/Retaining Wall Elevation, Property Line, Deciduous Tree.



TOPOGRAPHIC DATA WAS COLLECTED UNDER WINTER CONDITIONS. SNOW COVER AND ICE PRECLUDE DETERMINING LOCATION AND ELEVATION OF SOME TOPOGRAPHICAL DATA THAT IS OTHERWISE VISIBLE. WARNING NO PERSON MAY COPY, REPRODUCE, DISTRIBUTE OR ALTER THIS PLAN IN WHOLE OR IN PART WITHOUT THE WRITTEN PERMISSION OF FARLEY, SMITH & DENIS SURVEYING LTD. © FARLEY, SMITH & DENIS SURVEYING LTD., 2023.

Revision Note: Revised to show new road conditions along Scott Street. Fieldwork completed on the 21st day of August, 2023. Date: Sept 14 2023. Emad Alrefaai, Ontario Land Surveyor.

Surveyor's Certificate: I certify that: 1. This survey and plan are correct and in accordance with the Surveyors Act, the Surveyors Act and the Regulations made under them. 2. The survey was completed on the 4th day of January, 2022. Date: January 17, 2022. Jamie Leslie, Ontario Land Surveyor.

FARLEY, SMITH & DENIS SURVEYING LTD. ONTARIO LAND SURVEYORS CANADA LAND SURVEYORS

Unit 275, 30 COLONNADE ROAD, OTTAWA, ONTARIO K2E 7J6 TEL: (613) 727-8226 E-mail: fsdsurveys@bellnet.ca