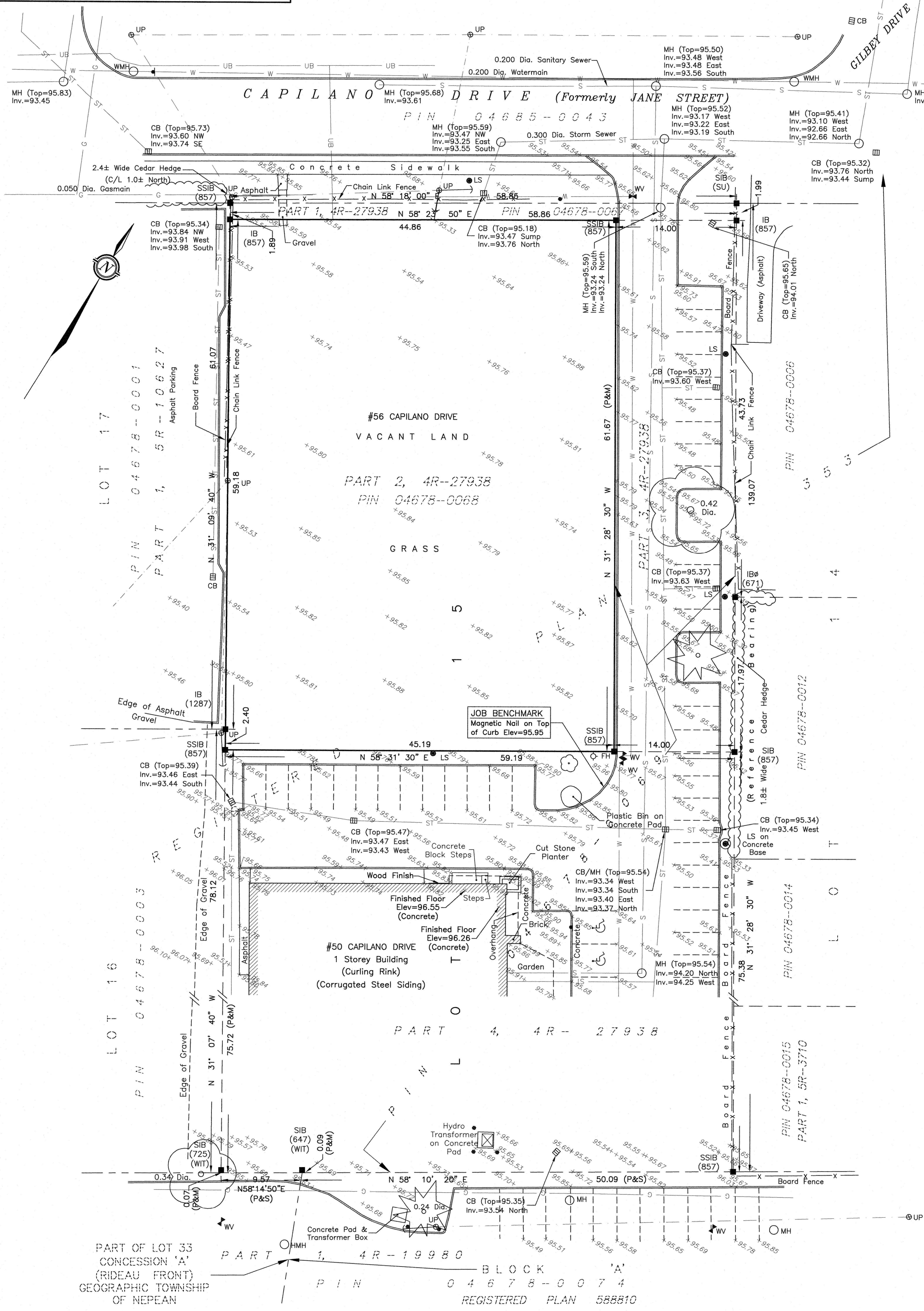


**METRIC**  
DISTANCES AND ELEVATIONS SHOWN ON THIS PLAN ARE IN METRES  
AND CAN BE CONVERTED TO FEET BY DIVIDING BY 0.3048



**TOPOGRAPHIC SURVEY OF  
PART OF LOT 15  
REGISTERED PLAN 353  
CITY OF OTTAWA**

SCALE 1 : 300  
0 5 10 20 30 metres

**FAIRHALL, MOFFATT & WOODLAND LIMITED**  
ONTARIO LAND SURVEYORS

**ELEVATION NOTES**

- ELEVATIONS SHOWN HEREON ARE REFERRED TO GEODETIC DATUM.
- ELEVATIONS FOR MANHOLE COVERS AND CATCH BASINS HAVE TO BE INDEPENDENTLY CONFIRMED BEFORE THEY CAN BE ACCEPTED FOR FINAL DESIGN OR CONSTRUCTION PURPOSES.
- IT IS THE RESPONSIBILITY OF THE USER OF THIS INFORMATION TO VERIFY THAT THE JOB BENCHMARK HAS NOT BEEN ALTERED OR DISTURBED AND THAT ITS RELATIVE ELEVATION AND DESCRIPTION AGREE WITH THE INFORMATION SHOWN ON THIS DRAWING.

**UTILITY NOTES**

- THIS DRAWING CANNOT BE ACCEPTED AS ACKNOWLEDGING ALL OF THE UNDERGROUND UTILITIES AND IT WILL BE THE RESPONSIBILITY OF THE USER TO CONTACT THE RESPECTIVE UTILITY AUTHORITIES FOR CONFIRMATION OR LOCATION.
- UNDERGROUND UTILITIES, AS REPORTED ON THIS DRAWING, ARE NOT BASED ON AN ACTUAL 'FIELD LOCATE' BY THE RESPECTIVE UTILITY AGENCIES BUT HAVE BEEN COMPILED FROM DATA OBTAINED FROM THE FOLLOWING SOURCE:
  - CITY OF OTTAWA PUBLIC UTILITIES REGISTRY
  - TOPOGRAPHIC PLAN OF SURVEY BY FAIRHALL, MOFFATT & WOODLAND LIMITED, O.L.S. DATED MAY 18, 2012 (REF. 1 (a) - 353 NP).
  - SITE SERVICING PLAN BY D. B. GRAY ENGINEERING INC. (REV.7 DEC 17-14).
- BEFORE ANY WORK INVOLVING PROBING, EXCAVATING, ETC., A FIELD LOCATION OF UNDERGROUND PLANT BY THE PERTINENT UTILITY AUTHORITY IS MANDATORY.

**NOTES**

- BEARINGS HEREON ARE ASTRONOMIC AND ARE REFERRED TO THE EASTERLY LIMIT OF PARTS 3 & 4 AS SHOWN ON PLAN 4R-27938, HAVING A BEARING OF N 31° 28' 30" W.
- THIS PLAN IS AN UPDATE OF A PLAN OF SURVEY BY FAIRHALL, MOFFATT & WOODLAND DATED JULY 21, 2016. (REF. 1(c)-353 NP).

**LEGEND**

■ - SURVEY MONUMENT FOUND	(SU) - SOURCE UNKNOWN
SIB - STANDARD IRON BAR	(WIT) - WITNESS
SSIB - SHORT STANDARD IRON BAR	DIA. - DIAMETER
IB - IRON BAR	INV. - INVERT
⊙ - ROUND	NW - NORTHWEST
CP - CONCRETE PIT	NE - NORTHEAST
(P) - PLAN 4R-27938	
(M) - MEASURED	
(S) - SET	
PIN - PROPERTY IDENTIFIER NUMBER	
(671) - F. H. GOOCH, O.L.S.	
(725) - R. W. ARNETT, O.L.S.	
(857) - FAIRHALL, MOFFATT & WOODLAND LIMITED, O.L.S. (REF. 1-353 NP)	
(1287) - FARLEY, SMITH & MURRAY SURVEYING LTD., O.L.S.	
(MTO) - MINISTRY OF TRANSPORTATION OF ONTARIO	
⊠ CB - CATCH BASIN	☼ - CONIFEROUS TREE
⊙ MH - MANHOLE	⊙ - DECIDUOUS TREE
⊙ WMH - WATER MANHOLE	♿ - HANDICAP
⊙ HMH - HYDRO MANHOLE	-W- - WATERMAIN
● LS - LAMP STANDARD	— — — - OVERHEAD UTILITY WIRES
⊙ UP - UTILITY POLE	-UH- - UNDERGROUND HYDRO
⊙ WV - WATER VALVE	-UB- - UNDERGROUND BELL
⊙ - GUY WIRE AND ANCHOR	-G- - GASMAIN
● - BOLLARD	-ST- - STORM SEWER
▲ - SIGN	-S- - SANITARY SEWER
	== - CURB

**SURVEYOR'S CERTIFICATE**

I CERTIFY THAT:  
1. THIS SURVEY AND PLAN ARE CORRECT AND IN ACCORDANCE WITH THE SURVEYS ACT, THE SURVEYORS ACT, THE LAND TITLES ACT AND THE REGULATIONS MADE UNDER THEM.  
2. THE SURVEY WAS COMPLETED ON JULY 11, 2023.

2023/07/27  
DATE  
JOHN H. GUTRI  
ONTARIO LAND SURVEYOR

ASSOCIATION OF ONTARIO  
LAND SURVEYORS  
PLAN SUBMISSION FORM  
V-55379

THIS PLAN IS NOT VALID  
UNLESS IT IS AN EMBOSSED  
ORIGINAL COPY  
ISSUED BY THE SURVEYOR  
in accordance with  
Regulation 1028, Section 29 (3).

**Fairhall  
Moffatt &  
Woodland**  
LIMITED  
OTTAWA  
Ontario Land Surveyors  
*Surveying and Land Information Services*  
100-600 TERRY FOX DRIVE, KANATA, ONTARIO K2L 4B6  
TEL: (613) 591-2580 FAX: (613) 591-1495  
www.fmw.on.ca

JOB No. AD22500  
E 364815, N 5024269  
REFERENCE No. 1 (d) - 353 NP  
S:\JOBS\ad22500\DWGS ad225-tp.DWG (RR)

© COPYRIGHT 2023. REPRODUCTION, ALTERATION OR DISTRIBUTION OF THIS PLAN WITHOUT THE WRITTEN CONSENT OF FAIRHALL, MOFFATT & WOODLAND LIMITED IS PROHIBITED.