



MECHANICAL & ELECTRICAL ENGINEER  
 Chorley + Bisset Consulting Engineers  
 250 City Centre Ave.,  
 Ottawa, ON  
 613-241-0030  
 email@chorley.com

CIVIL ENGINEER  
 McIntosh Perry  
 115 Walgreen Road  
 RR3 Carp, ON  
 613-836-2184  
 info@mcintoshperry.com

LANDSCAPE ARCHITECT  
 Fotenn  
 396 Cooper St, Suite 300  
 Ottawa, ON  
 613-730-5709  
 info@fotenn.com



STAMP

2 2023.03.08 ISSUED FOR SITE PLAN CONTROL  
 1 2023.02.03 ISSUED FOR RHI 3 APPLICATION  
 REV DATE ISSUE

NOTES  
 1. OWNERSHIP OF THE COPYRIGHT OF THE DESIGN AND THE WORKS EXECUTED FROM THE DESIGN REMAINS WITH CSV ARCHITECTS, AND MAY NOT BE REPRODUCED IN ANY FORM WITHOUT THE WRITTEN CONSENT OF CSV ARCHITECTS.  
 2. THE DRAWINGS, PRESENTATIONS AND SPECIFICATIONS AS INSTRUMENTS OF SERVICE ARE AND SHALL REMAIN THE PROPERTY OF CSV ARCHITECTS. THEY ARE NOT TO BE USED BY THE CLIENT ON OTHER PROJECTS OR ON EXTENSIONS TO THIS PROJECT WITHOUT THE WRITTEN CONSENT OF CSV ARCHITECTS.  
 3. THIS DRAWING IS TO BE READ IN CONJUNCTION WITH ALL OTHER PROJECT DRAWINGS AND SPECIFICATIONS.  
 4. DO NOT SCALE DRAWINGS. CONTRACTOR SHALL BE RESPONSIBLE TO VERIFY DIMENSIONS ON SITE.  
 5. ALL WORK SHALL BE IN ACCORDANCE WITH THE ONTARIO BUILDING CODE AND ALL SUPPLEMENTS AND APPLICABLE MUNICIPAL REGULATIONS.

CLIENT  
**OTTAWA SALUS**  
 200 Scott Street  
 Ottawa Ontario  
 K1Z 6T2  
 Salusottawa.org

PROJECT  
**SALUS 56 CAPILANO**  
 56 Capilano Drive, Ottawa, ON

TITLE  
**APARTMENT ELEVATIONS**

PROJECT NO: 2019-0291  
 DRAWN: AS, KV  
 APPROVED: DH  
 SCALE: 1 : 100

REV DRAWING NO.  
 2 A301

**ELEVATION NOTES:**

CONTRACTOR TO COORDINATE WITH MANUFACTURER'S SPECIFICATIONS AND INSTALLATIONS GUIDELINES FOR ALL MATERIAL SEALING, TRANSITIONS, SEPARATIONS, FLASHING DETAILS, CONNECTIONS, ANCHORAGES, ETC. CONTRACTOR TO PROVIDE DETAIL DRAWINGS OR MOCK-UP FOR ARCHITECTS REVIEW AND APPROVAL FOR ALL SPECIAL CONDITIONS NOT SHOWN IN THE CONTRACT DOCUMENTS.

**ELEVATION KEYNOTES:**

- 1 OVERFLOW SCUPPER FLASHING COLOUR TO MATCH PARAPET CAP FLASHING
- 2 FUTURE PHOTOVOLTAIC ARRAY
- 3 ROOF ACCESS HATCH
- 4 PRE FINISHED METAL PARAPET CAP FLASHING
- 5 CANOPY STRUCTURE
- 6 MECHANICAL VENTILATION WELL
- 7 BICYCLE PARKING RACK/RING
- 8 BUILDING SIGNAGE
- 9 WALL MOUNTED EXTERIOR LIGHT
- 10 1070mm HIGH STAINLESS STEEL GUARD ANCHORED TO CONCRETE BLOCK RETAINING WALL
- 11 CONCRETE FACED INSULATION PANEL
- 12 STANDING SEAM METAL ROOF

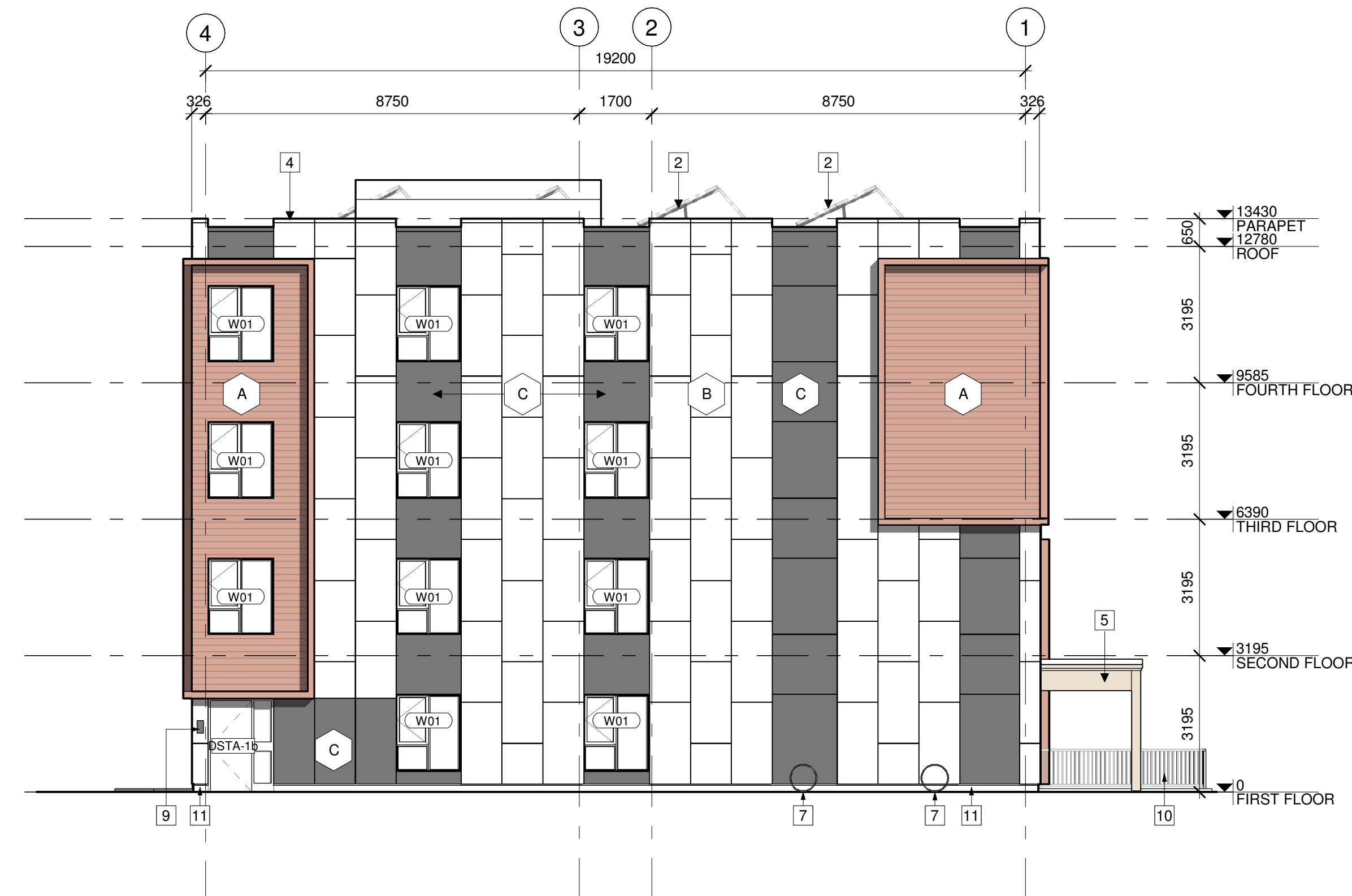
**ELEVATION LEGEND:**

HATCH PATTERNS SHOWN ARE FOR GRAPHIC PURPOSES ONLY AND SHOULD BE COORDINATED WITH ACTUAL SPECIFIED MATERIALS.

HATCH	SYMBOL	DESCRIPTION
	A	SIMULATED WOOD PLANK ALUMINIUM SIDING MANUFACTURER: TBD COLOUR: TBD
	B	METAL CASSETTE PANEL CLADDING MANUFACTURER: TBD COLOUR: TBD
	C	CONCRETE REINFORCED PANEL CLADDING COLOUR:



1 ELEVATION - NORTH  
 A301 1:100



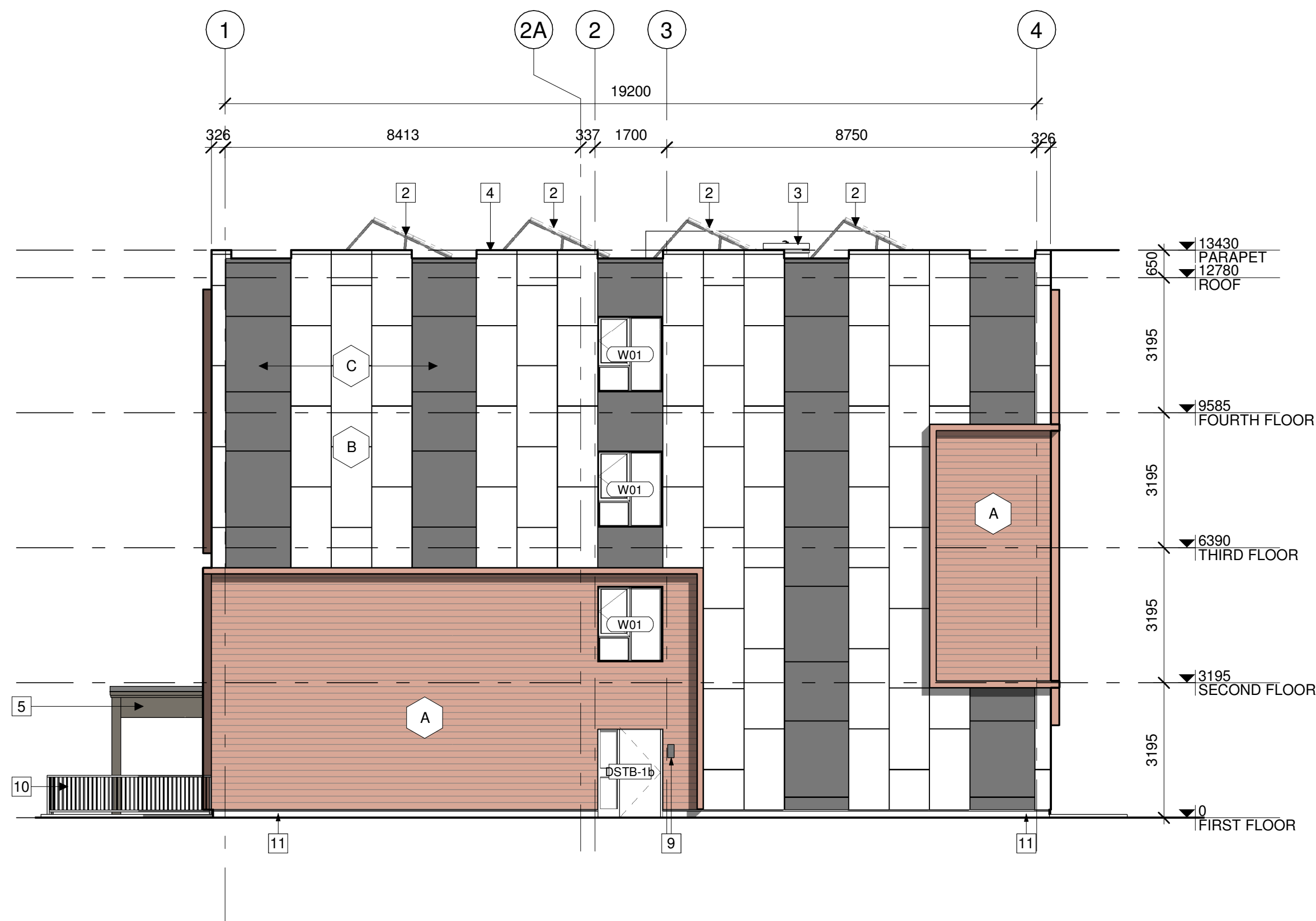
3 ELEVATION - EAST  
 A301 1:100



2 NORTH/EAST PERSPECTIVE VIEW  
 A301



**1 ELEVATION - SOUTH**  
A302 1:100



**2 ELEVATION - WEST**  
A302 1:100



**3 SOUTH/WEST PERSPECTIVE VIEW**  
A302

**ELEVATION NOTES:**

CONTRACTOR TO COORDINATE WITH MANUFACTURER'S SPECIFICATIONS AND INSTALLATIONS GUIDELINES FOR ALL MATERIAL SEALING, TRANSITIONS, SEPARATIONS, FLASHING DETAILS, CONNECTIONS, ANCHORAGES, ETC. CONTRACTOR TO PROVIDE DETAIL DRAWINGS OR MOCK-UP FOR ARCHITECTS REVIEW AND APPROVAL FOR ALL SPECIAL CONDITIONS NOT SHOWN IN THE CONTRACT DOCUMENTS.

**ELEVATION KEYNOTES:**

- 1 OVERFLOW SCUPPER FLASHING COLOUR TO MATCH PARAPET CAP FLASHING
- 2 FUTURE PHOTOVOLTAIC ARRAY
- 3 ROOF ACCESS HATCH
- 4 PRE FINISHED METAL PARAPET CAP FLASHING
- 5 CANOPY STRUCTURE
- 6 MECHANICAL VENTILATION WELL
- 7 BICYCLE PARKING RACK/RING
- 8 BUILDING SIGNAGE
- 9 WALL MOUNTED EXTERIOR LIGHT
- 10 1070mm HIGH STAINLESS STEEL GUARD ANCHORED TO CONCRETE BLOCK RETAINING WALL
- 11 CONCRETE FACED INSULATION PANEL
- 12 STANDING SEAM METAL ROOF

**ELEVATION LEGEND:**

HATCH PATTERNS SHOWN ARE FOR GRAPHIC PURPOSES ONLY AND SHOULD BE COORDINATED WITH ACTUAL SPECIFIED MATERIALS.

HATCH	SYMBOL	DESCRIPTION
	A	SIMULATED WOOD PLANK ALUMINIUM SIDING MANUFACTURER: TBD COLOUR: TBD
	B	METAL CASSETTE PANEL CLADDING MANUFACTURER: TBD COLOUR: TBD
	C	CONCRETE REINFORCED PANEL CLADDING MANUFACTURER: TBD COLOUR: TBD



**STRUCTURAL ENGINEER**  
Cleland Jardine Engineering Ltd  
580 Terry Fox Drive, Suite 200  
Ottawa, ON  
613-591-1533  
mail@clelandjardine.com



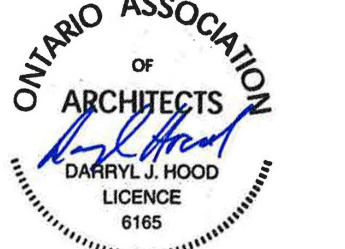
**MECHANICAL & ELECTRICAL ENGINEER**  
Chorley + Bisset Consulting Engineers  
250 City Centre Ave.,  
Ottawa, ON  
613-241-0030  
email@chorley.com



**CIVIL ENGINEER**  
McIntosh Perry  
115 Walgreen Road  
RR3 Carp, ON  
613-836-2184  
info@mcintoshperry.com



**LANDSCAPE ARCHITECT**  
Fotenn  
396 Cooper St, Suite 300  
Ottawa, ON  
613-730-5709  
info@fotenn.com



STAMP

2 2023.03.08 ISSUED FOR SITE PLAN CONTROL  
1 2023.02.03 ISSUED FOR RHI 3 APPLICATION  
REV DATE ISSUE

**NOTES**

1. OWNERSHIP OF THE COPYRIGHT OF THE DESIGN AND THE WORKS EXECUTED FROM THE DESIGN REMAINS WITH CSV ARCHITECTS, AND MAY NOT BE REPRODUCED IN ANY FORM WITHOUT THE WRITTEN CONSENT OF CSV ARCHITECTS.
2. THE DRAWINGS, PRESENTATIONS AND SPECIFICATIONS AS INSTRUMENTS OF SERVICE ARE AND SHALL REMAIN THE PROPERTY OF CSV ARCHITECTS. THEY ARE NOT TO BE USED BY THE CLIENT ON OTHER PROJECTS OR ON EXTENSIONS TO THIS PROJECT WITHOUT THE WRITTEN CONSENT OF CSV ARCHITECTS.
3. THIS DRAWING IS TO BE READ IN CONJUNCTION WITH ALL OTHER PROJECT DRAWINGS AND SPECIFICATIONS.
4. DO NOT SCALE DRAWINGS. CONTRACTOR SHALL BE RESPONSIBLE TO VERIFY DIMENSIONS ON SITE.
5. ALL WORK SHALL BE IN ACCORDANCE WITH THE ONTARIO BUILDING CODE AND ALL SUPPLEMENTS AND APPLICABLE MUNICIPAL REGULATIONS.

**CLIENT**

**OTTAWA SALUS**

200 Scott Street  
Ottawa Ontario  
K1Z 6T2  
Salusottawa.org

**PROJECT**

**SALUS 56 CAPILANO**

56 Capilano Drive, Ottawa, ON

**TITLE**

**APARTMENT ELEVATIONS**

PROJECT NO: 2019-0291  
DRAWN: AS, KV  
APPROVED: DH  
SCALE: 1:100

REV DRAWING NO.

2 A302



STRUCTURAL ENGINEER  
 Cleland Jardine Engineering Ltd  
 580 Terry Fox Drive, Suite 200  
 Ottawa, ON 613-591-1533  
 mail@clelandjardine.com



MECHANICAL & ELECTRICAL ENGINEER  
 Chorley + Bisset Consulting Engineers  
 250 City Centre Ave.,  
 Ottawa, ON 613-241-0030  
 email@chorley.com

CIVIL ENGINEER  
 McIntosh Perry  
 115 Walgreen Road  
 RR3 Carp, ON 613-836-2184  
 info@mcintoshperry.com



LANDSCAPE ARCHITECT  
 Fotenn  
 396 Cooper St, Suite 300  
 Ottawa, ON 613-730-5709  
 info@fotenn.com



STAMP

2 2023.03.08 ISSUED FOR SITE PLAN CONTROL  
 1 2023.02.03 ISSUED FOR RHI 3 APPLICATION  
 REV DATE ISSUE

NOTES

1. OWNERSHIP OF THE COPYRIGHT OF THE DESIGN AND THE WORKS EXECUTED FROM THE DESIGN REMAINS WITH CSV ARCHITECTS, AND MAY NOT BE REPRODUCED IN ANY FORM WITHOUT THE WRITTEN CONSENT OF CSV ARCHITECTS.
2. THE DRAWINGS, PRESENTATIONS AND SPECIFICATIONS AS INSTRUMENTS OF SERVICE ARE AND SHALL REMAIN THE PROPERTY OF CSV ARCHITECTS. THEY ARE NOT TO BE USED BY THE CLIENT ON OTHER PROJECTS OR ON EXTENSIONS TO THIS PROJECT WITHOUT THE WRITTEN CONSENT OF CSV ARCHITECTS.
3. THIS DRAWING IS TO BE READ IN CONJUNCTION WITH ALL OTHER PROJECT DRAWINGS AND SPECIFICATIONS.
4. DO NOT SCALE DRAWINGS. CONTRACTOR SHALL BE RESPONSIBLE TO VERIFY DIMENSIONS ON SITE.
5. ALL WORK SHALL BE IN ACCORDANCE WITH THE ONTARIO BUILDING CODE AND ALL SUPPLEMENTS AND APPLICABLE MUNICIPAL REGULATIONS.

CLIENT

**OTTAWA SALUS**

200 Scott Street  
 Ottawa Ontario  
 K1Z 6T2  
 Salusottawa.org

PROJECT

**SALUS 56 CAPILANO**

56 Capilano Drive, Ottawa, ON

TITLE

**TOWNHOUSE ELEVATIONS**

PROJECT NO: 2019-0291  
 DRAWN: AS, KV  
 APPROVED: DH  
 SCALE: 1 : 100

REV DRAWING NO.

2 A310

**ELEVATION NOTES:**

CONTRACTOR TO COORDINATE WITH MANUFACTURER'S SPECIFICATIONS AND INSTALLATIONS GUIDELINES FOR ALL MATERIAL SEALING, TRANSITIONS, SEPARATIONS, FLASHING DETAILS, CONNECTIONS, ANCHORAGES, ETC. CONTRACTOR TO PROVIDE DETAIL DRAWINGS OR MOCK-UP FOR ARCHITECTS REVIEW AND APPROVAL FOR ALL SPECIAL CONDITIONS NOT SHOWN IN THE CONTRACT DOCUMENTS.

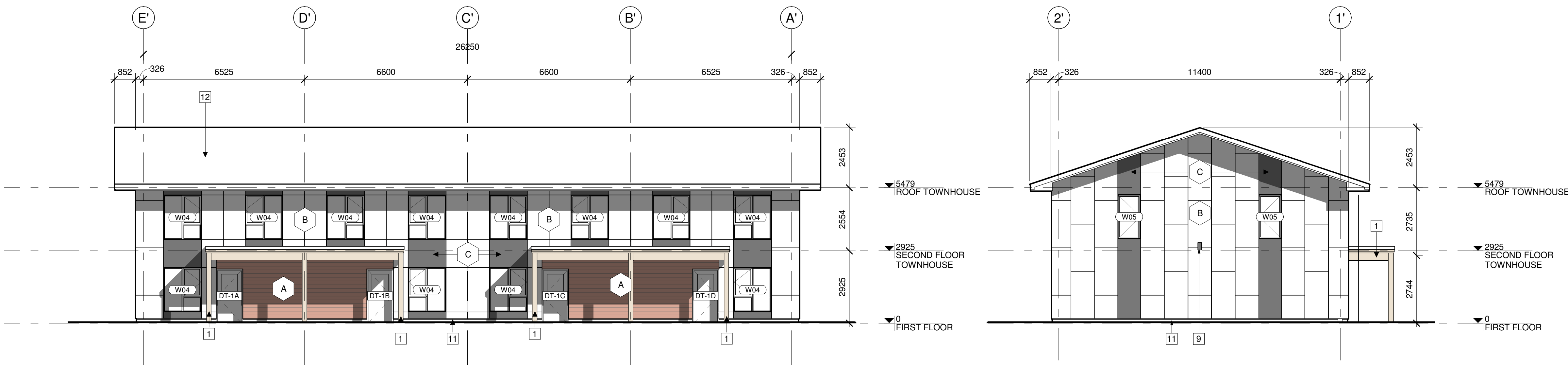
**ELEVATION KEYNOTES:**

- 1 OVERFLOW SCUPPER FLASHING COLOUR TO MATCH PARAPET CAP FLASHING
- 2 FUTURE PHOTOVOLTAIC ARRAY
- 3 ROOF ACCESS HATCH
- 4 PRE FINISHED METAL PARAPET CAP FLASHING
- 5 CANOPY STRUCTURE
- 6 MECHANICAL VENTILATION WELL
- 7 BICYCLE PARKING RACK/RING
- 8 BUILDING SIGNAGE
- 9 WALL MOUNTED EXTERIOR LIGHT
- 10 1070mm HIGH STAINLESS STEEL GUARD ANCHORED TO CONCRETE BLOCK RETAINING WALL
- 11 CONCRETE FACED INSULATION PANEL
- 12 STANDING SEAM METAL ROOF

**ELEVATION LEGEND:**

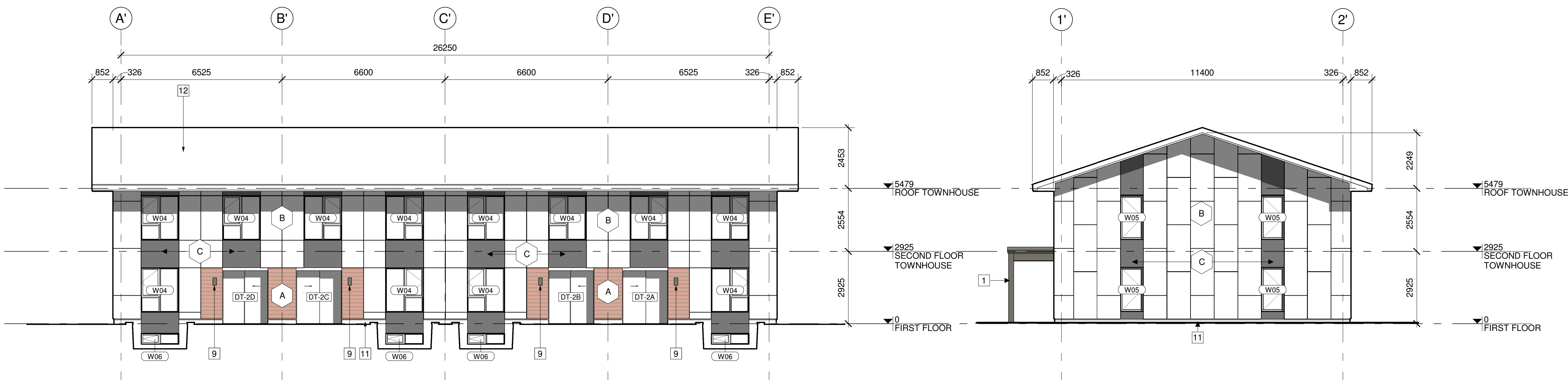
HATCH PATTERNS SHOWN ARE FOR GRAPHIC PURPOSES ONLY AND SHOULD BE COORDINATED WITH ACTUAL SPECIFIED MATERIALS.

HATCH	SYMBOL	DESCRIPTION
	A	SIMULATED WOOD PLANK ALUMINIUM SIDING MANUFACTURER: TBD COLOUR: TBD
	B	METAL CASSETTE PANEL CLADDING MANUFACTURER: TBD COLOUR: TBD
	C	CONCRETE REINFORCED PANEL CLADDING MANUFACTURER: TBD COLOUR: TBD



**1 TOWNHOUSES NORTH ELEVATION**  
 A310 1:100

**2 TOWNHOUSES EAST ELEVATION**  
 A310 1:100

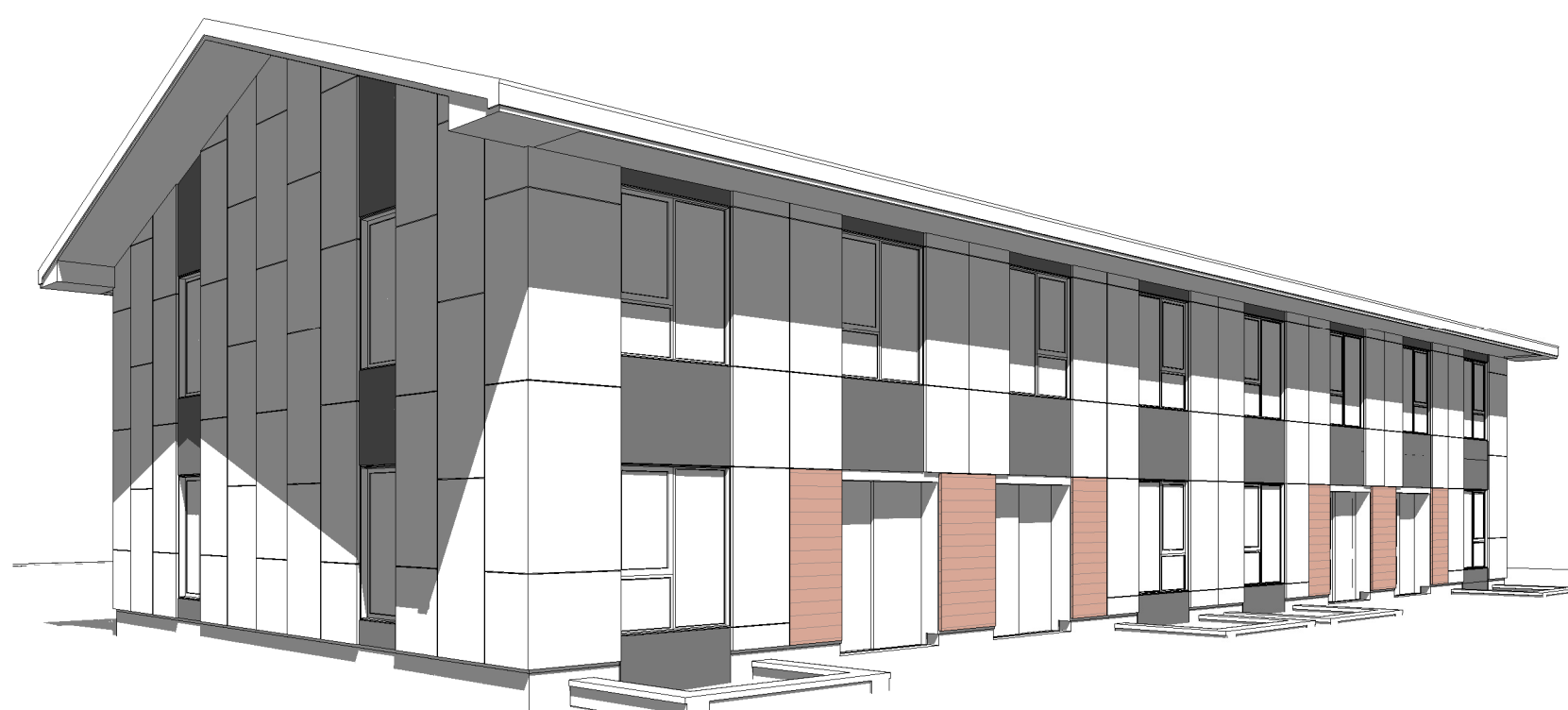


**3 TOWNHOUSES SOUTH ELEVATION**  
 A310 1:100

**4 TOWNHOUSES WEST ELEVATION**  
 A310 1:100



**5 TOWNHOUSE NORTH/EAST PERSPECTIVE VIEW**  
 A310



**6 TOWNHOUSE SOUTH/WEST PERSPECTIVE VIEW**  
 A310