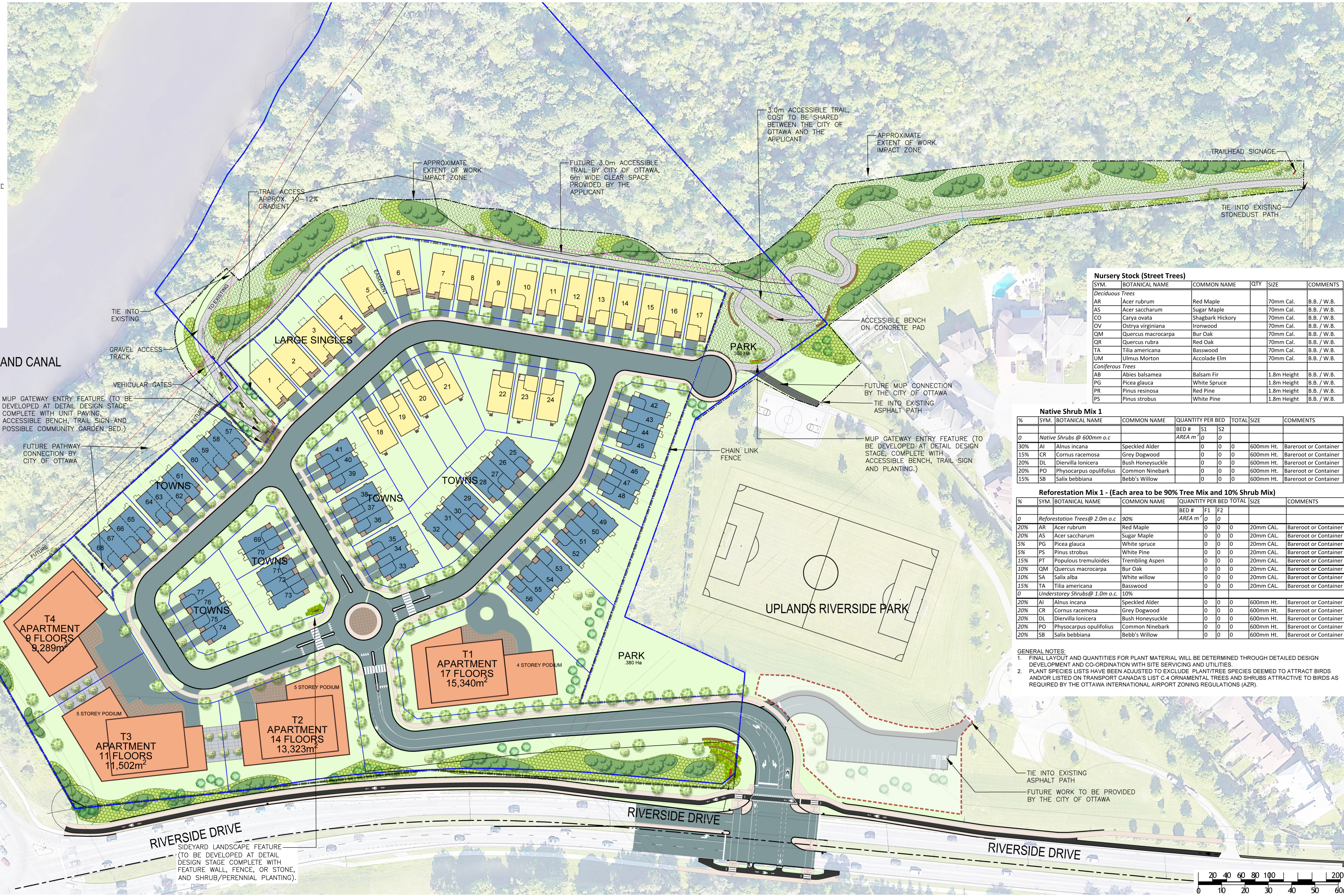


- LEGEND:**
- 3.0m WIDE ACCESSIBLE STONEDUST TRAIL
 - 3.0m WIDE ASPHALT MUP
 - CONCRETE SIDEWALK
 - ROCK RETAINING WALL
 - NATIVE SHRUB PLANTING
 - REFORESTATION PLANTING
 - DECIDUOUS TREE PLANTING
 - CONIFEROUS TREE PLANTING
 - APPROXIMATE EXTENT OF SLOPE MODIFICATION
 - NATIVE GRASS / WILDFLOWER SEEDING: 'BASE RESTORATION SEED MIX' AS SUPPLIED BY ST.WILLIAMS NURSERY
 - SEED / SOD
 - PROPERTY LINE
 - LIMIT OF APPLICANT'S SCOPE OF WORK
 - LIMIT OF COMBINED CITY / APPLICANT SCOPE OF WORK
 - GUARDRAIL



Nursery Stock (Street Trees)

SYM.	BOTANICAL NAME	COMMON NAME	QTY	SIZE	COMMENTS
AR	Acer rubrum	Red Maple		70mm Cal.	B.B. / W.B.
AS	Acer saccharum	Sugar Maple		70mm Cal.	B.B. / W.B.
CO	Carya ovata	Shagbark Hickory		70mm Cal.	B.B. / W.B.
OV	Ostrya virginiana	Ironwood		70mm Cal.	B.B. / W.B.
QM	Quercus macrocarpa	Bur Oak		70mm Cal.	B.B. / W.B.
QR	Quercus rubra	Red Oak		70mm Cal.	B.B. / W.B.
TA	Tilia americana	Basswood		70mm Cal.	B.B. / W.B.
UM	Ulmus Morton	Accolade Elm		70mm Cal.	B.B. / W.B.
Coniferous Trees					
AB	Abies balsamea	Balsam Fir		1.8m Height	B.B. / W.B.
PG	Picea glauca	White Spruce		1.8m Height	B.B. / W.B.
PR	Pinus resinosa	Red Pine		1.8m Height	B.B. / W.B.
PS	Pinus strobus	White Pine		1.8m Height	B.B. / W.B.

Native Shrub Mix 1

%	SYM.	BOTANICAL NAME	COMMON NAME	QUANTITY PER BED			TOTAL SIZE	COMMENTS
				BED #	S1	S2		
0		Native Shrubs @ 600mm o.c.		0	0	0		
30%	AI	Alnus incana	Speckled Alder	0	0	0	600mm Ht.	Bareroot or Container
15%	CR	Cornus racemosa	Grey Dogwood	0	0	0	600mm Ht.	Bareroot or Container
20%	DL	Diervilla lonicera	Bush Honeysuckle	0	0	0	600mm Ht.	Bareroot or Container
20%	PO	Physocarpus opulifolius	Common Ninebark	0	0	0	600mm Ht.	Bareroot or Container
15%	SB	Salix bebbiana	Bebb's Willow	0	0	0	600mm Ht.	Bareroot or Container

Reforestation Mix 1 - (Each area to be 90% Tree Mix and 10% Shrub Mix)

%	SYM.	BOTANICAL NAME	COMMON NAME	QUANTITY PER BED			TOTAL SIZE	COMMENTS
				BED #	F1	F2		
0		Reforestation Trees @ 2.0m o.c.	90%	0	0	0		
20%	AR	Acer rubrum	Red Maple	0	0	0	20mm CAL.	Bareroot or Container
20%	AS	Acer saccharum	Sugar Maple	0	0	0	20mm CAL.	Bareroot or Container
5%	PG	Picea glauca	White spruce	0	0	0	20mm CAL.	Bareroot or Container
5%	PS	Pinus strobus	White Pine	0	0	0	20mm CAL.	Bareroot or Container
15%	PT	Populus tremuloides	Trembling Aspen	0	0	0	20mm CAL.	Bareroot or Container
10%	QM	Quercus macrocarpa	Bur Oak	0	0	0	20mm CAL.	Bareroot or Container
10%	SA	Salix alba	White willow	0	0	0	20mm CAL.	Bareroot or Container
15%	TA	Tilia americana	Basswood	0	0	0	20mm CAL.	Bareroot or Container
0		Understorey Shrubs @ 1.0m o.c.	10%					
20%	AI	Alnus incana	Speckled Alder	0	0	0	600mm Ht.	Bareroot or Container
20%	CR	Cornus racemosa	Grey Dogwood	0	0	0	600mm Ht.	Bareroot or Container
20%	DL	Diervilla lonicera	Bush Honeysuckle	0	0	0	600mm Ht.	Bareroot or Container
20%	PO	Physocarpus opulifolius	Common Ninebark	0	0	0	600mm Ht.	Bareroot or Container
20%	SB	Salix bebbiana	Bebb's Willow	0	0	0	600mm Ht.	Bareroot or Container

- GENERAL NOTES:**
- FINAL LAYOUT AND QUANTITIES FOR PLANT MATERIAL WILL BE DETERMINED THROUGH DETAILED DESIGN DEVELOPMENT AND CO-ORDINATION WITH SITE SERVICING AND UTILITIES.
 - PLANT SPECIES LISTS HAVE BEEN ADJUSTED TO EXCLUDE PLANT/TREE SPECIES DEEMED TO ATTRACT BIRDS AND/OR LISTED ON TRANSPORT CANADA'S LIST C.4 ORNAMENTAL TREES AND SHRUBS ATTRACTIVE TO BIRDS AS REQUIRED BY THE OTTAWA INTERNATIONAL AIRPORT ZONING REGULATIONS (AZR).

