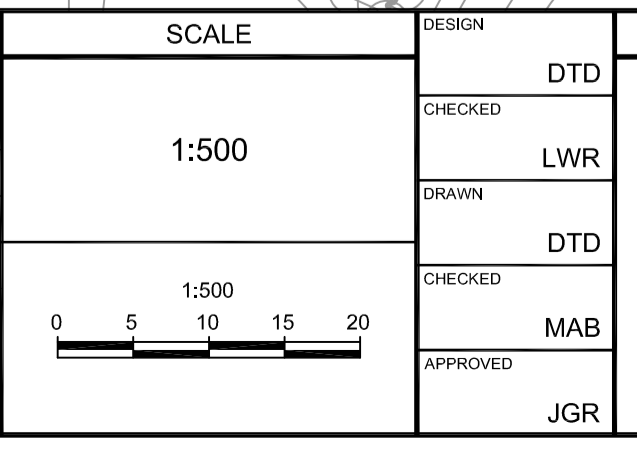


- LEGEND**
- 0.24 ha EXISTING AREA (hectares)
  - A-01 AREA ID
  - 0.65 RUN-OFF COEFFICIENT
  - EXISTING STORM DRAINAGE AREA BOUNDARY
  - EXISTING STORM MANHOLE / SEWER AND FLOW DIRECTION
  - EXISTING ROAD CATCHBASIN
  - EXISTING FLOW DIRECTION

**NOTE:**  
 THE POSITION OF ALL POLE LINES, CONDUITS, WATERMANS, SEWERS AND OTHER UNDERGROUND AND OVERGROUND UTILITIES AND STRUCTURES IS NOT NECESSARILY SHOWN ON THE CONTRACT DRAWINGS, AND WHERE SHOWN, THE ACCURACY OF THE POSITION OF SUCH UTILITIES AND STRUCTURES IS NOT GUARANTEED. BEFORE STARTING WORK, DETERMINE THE EXACT LOCATION OF ALL SUCH UTILITIES AND STRUCTURES AND ASSUME ALL LIABILITY FOR DAMAGE TO THEM.

No.	REVISION	DATE	BY
1.	CITY SUBMISSION	NOV 3/23	MAB

DESIGN	DTD
CHECKED	LWR
DRAWN	DTD
CHECKED	MAB
APPROVED	JGR



**FOR REVIEW ONLY**

**NOVATECH**  
 Engineers, Planners & Landscape Architects  
 Suite 200, 240 Michael Cowpland Drive  
 Ottawa, Ontario, Canada K2M 1P6

Telephone (613) 254-9643  
 Facsimile (613) 254-5867  
 Website www.novatech-eng.com

CITY OF OTTAWA  
 1104 HALTON TERRACE

**PRE-DEVELOPMENT  
 STORM DRAINAGE AREA PLAN**

PROJECT No.	119024
REV	REV # 1
DRAWING No.	119024-STM1

M:\2019\119024\CADD\Design\119024-STM1.dwg, PLANIS-A1, Oct 26, 2023, 1:38pm, Wilson

PLAN #18654 D07-12-21-0186