

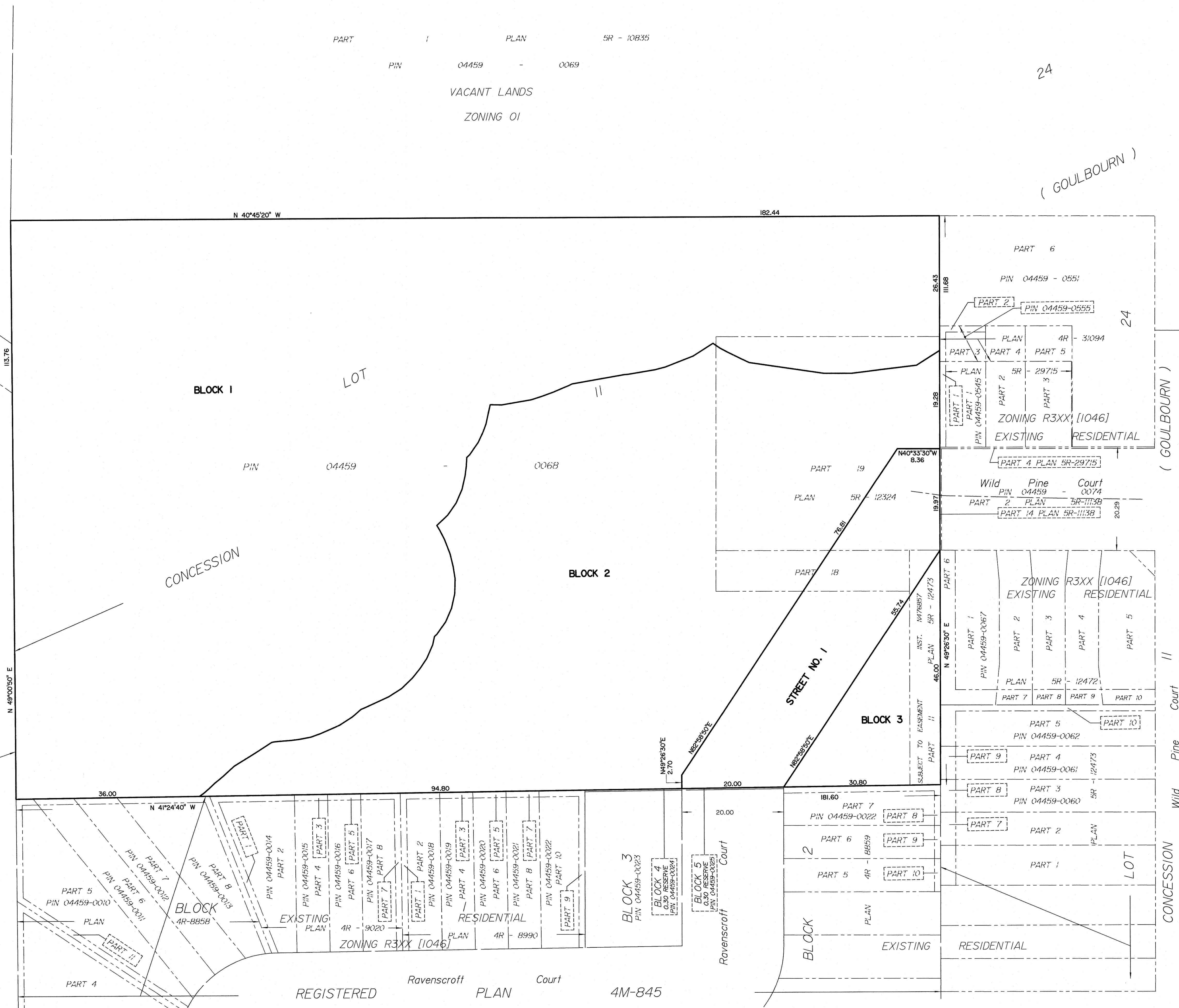
PART 1 PLAN 5R - 10835  
PIN 04459 - 0069  
VACANT LANDS  
ZONING O1

24

4M-1103  
BLOCK 28  
PIN 04459 - 0528  
VACANT LANDS  
ZONING O1

PLAN  
PART 22  
PLAN 4R-162775

REGISTERED  
EXISTING COMMERCIAL  
ZONING TM 9 [2270] H(15)  
BLOCK 33  
PIN 04459 - 0396



**DRAFT PLAN OF SUBDIVISION OF  
PART OF LOT 24  
CONCESSION 11**  
Geographic Township of Goulbourn  
**CITY OF OTTAWA**  
Prepared by Annis, O'Sullivan, Vollebek Ltd.

Scale 1 : 400  
10 12 4 0 8 16 Metres

Metric  
DISTANCES SHOWN ON THIS PLAN ARE IN METRES AND  
CAN BE CONVERTED TO FEET BY DIVIDING BY 0.3048

**SURVEYOR'S CERTIFICATE**

I CERTIFY THAT:  
The boundaries of the lands to be subdivided and their relationship to  
adjoining lands have been accurately and correctly shown.

*Joe B. Zeb*  
Date  
T. Hartwick  
ONTARIO LAND SURVEYOR

**OWNER'S CERTIFICATE**

This is to certify that I am the owner of the lands to be subdivided and that this plan was  
prepared in accordance with my instructions.

Date  
Carmine Zayoun  
Wild Pine Trails Inc.  
I have authority to bind the corporation.

**ADDITIONAL INFORMATION REQUIRED UNDER  
SECTION 51-17 OF THE PLANNING ACT**

- (a) see plan
- (b) see plan
- (c) see plan
- (d) multi-family residential housing, open space
- (e) see plan
- (f) see plan
- (g) see plan
- (h) City of Ottawa
- (i) see soils report
- (j) see plan
- (k) sanitary, storm sewers, municipal water, bell, hydro, cable and gas to be available
- (l) subject to instrument N476857, see plan for location

**AREA SCHEDULE**

LOT/BLOCK	AREA (sqm)
1	12 092
2	6 410
3	708
STREET	1 303
TOTAL	20 513