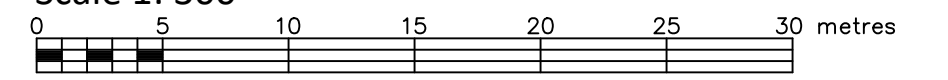


LOT 12 AND PART OF LOT 11 REGISTERED PLAN 404 CITY OF OTTAWA

FARLEY, SMITH & DENIS SURVEYING LTD. 2020

Scale 1: 300



Metric Note: Distances and coordinates on this plan are in metres and can be converted to feet by dividing by 0.3048.

Distance Note: Distances shown on this plan are ground distances and can be converted to grid distances by multiplying by the combined scale factor of 0.99994.

Bearing Note: Bearings are grid, are referred to the Northerly limit of Registered Plan 553324 having a bearing of N 57° 15' 20" E and are referred to the Central Meridian of MTM Zone 9 (76°30' West Longitude) Nad-83 (Original).

For bearing comparisons, a rotation of 0°28'04" clockwise was applied to bearings on P1 & P5.

For bearing comparisons, a rotation of 0°32'10" counter-clockwise was applied to bearings on P2.

For bearing comparisons, a rotation of 0°27'30" counter-clockwise was applied to bearings on P4.

For bearing comparisons, a rotation of 0°32'20" counter-clockwise was applied to bearings on P7.

For bearing comparisons, a rotation of 1°11'05" counter-clockwise was applied to bearings on P8.

Elevation Notes: 1. Elevations shown are geodetic and are referred to Geodetic Datum CGVD-1928 :1978. 2. It is the responsibility of the user of this information to verify that the job benchmark has not been altered or disturbed and that its relative elevation and description agrees with the information shown on this drawing.

Utility Notes: 1. This drawing cannot be accepted as acknowledging all of the utilities and it will be the responsibility of the user to contact the respective utility authorities for confirmation. 2. Only visible surface utilities were located. 3. Underground utility data derived from City of Ottawa utility sheet reference: O-07-04, O-07-05, 2506p&p22, 2506p&p23, 11146NEP&p1 & 11684p&p2. 4. Sanitary and storm sewer grades and inverts were compiled from: City of Ottawa underground plans. 5. A field location of underground plant by the pertinent utility authority is mandatory before any work involving breaking ground, probing, excavating etc.

Notes: All ties to water's edge are at right angle to the traverse line unless otherwise noted.

Notes & Legend

Table with 2 columns: Denotes (symbols) and descriptions (e.g., Survey Monument Planted, Standard Iron Bar, etc.).

Deciduous Tree - The Symbol shown denotes location and trunk diameter only. Size of its' root system/overhead canopy may be smaller/larger than the symbol size depicted on this plan.

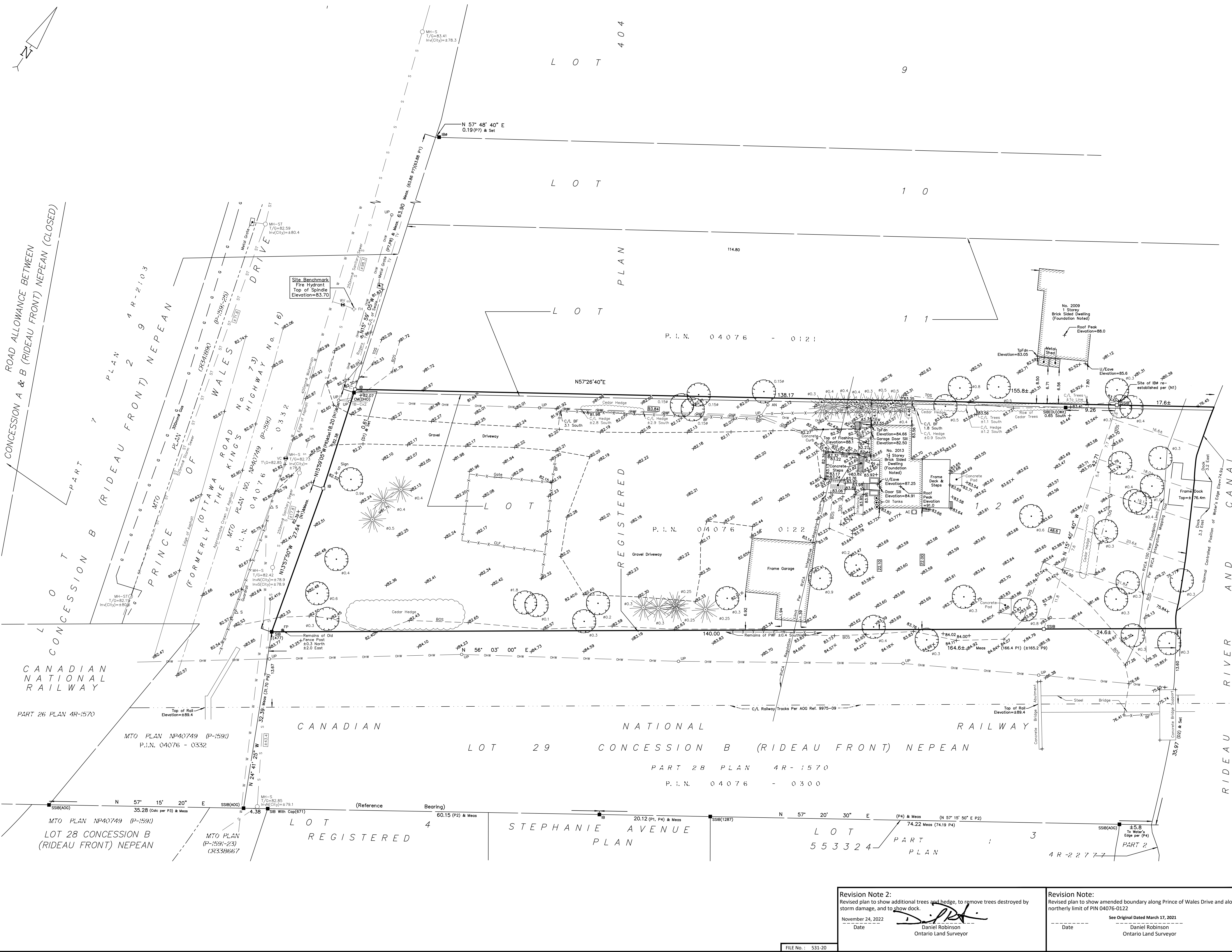
Coniferous Tree - The Symbol shown denotes location and trunk diameter only. Size of its' root system/overhead canopy may be smaller/larger than the symbol size depicted on this plan.

WARNING: NO PERSON MAY COPY, REPRODUCE, DISTRIBUTE OR ALTER THIS PLAN IN WHOLE OR IN PART WITHOUT THE WRITTEN PERMISSION OF FARLEY, SMITH & DENIS SURVEYING LTD.

Surveyor's Certificate: I certify that: 1. This survey and plan are correct and in accordance with the Surveys Act, the Surveyors Act and the Regulations made under them. 2. The survey was completed on the 7th day of December, 2020.

See Original Dated December 10, 2020. Daniel Robinson, Ontario Land Surveyor.

FARLEY, SMITH & DENIS SURVEYING LTD. ONTARIO LAND SURVEYORS CANADA LAND SURVEYORS 190 COLONNADE ROAD, OTTAWA, ONTARIO K2E 7J5 TEL. (613) 727-8226 FAX. (613) 727-1826



Revision Note 2: Revised plan to show additional trees and hedge, to remove trees destroyed by storm damage, and to show dock. November 24, 2022. Daniel Robinson, Ontario Land Surveyor.

Revision Note: Revised plan to show amended boundary along Prince of Wales Drive and along the northerly limit of PIN 04076-0122. See Original Dated March 17, 2021. Daniel Robinson, Ontario Land Surveyor.