



Metric
 DISTANCES SHOWN ON THIS PLAN ARE IN METRES AND
 CAN BE CONVERTED TO FEET BY DIVIDING BY 0.3048

Surveyor's Certificate

- I CERTIFY THAT:
 1. This plan was surveyed and is accordance with the Surveyors Act and the Surveyors Regulation and the regulations made under them.
 2. The survey was completed on the 9th day of May, 2022.

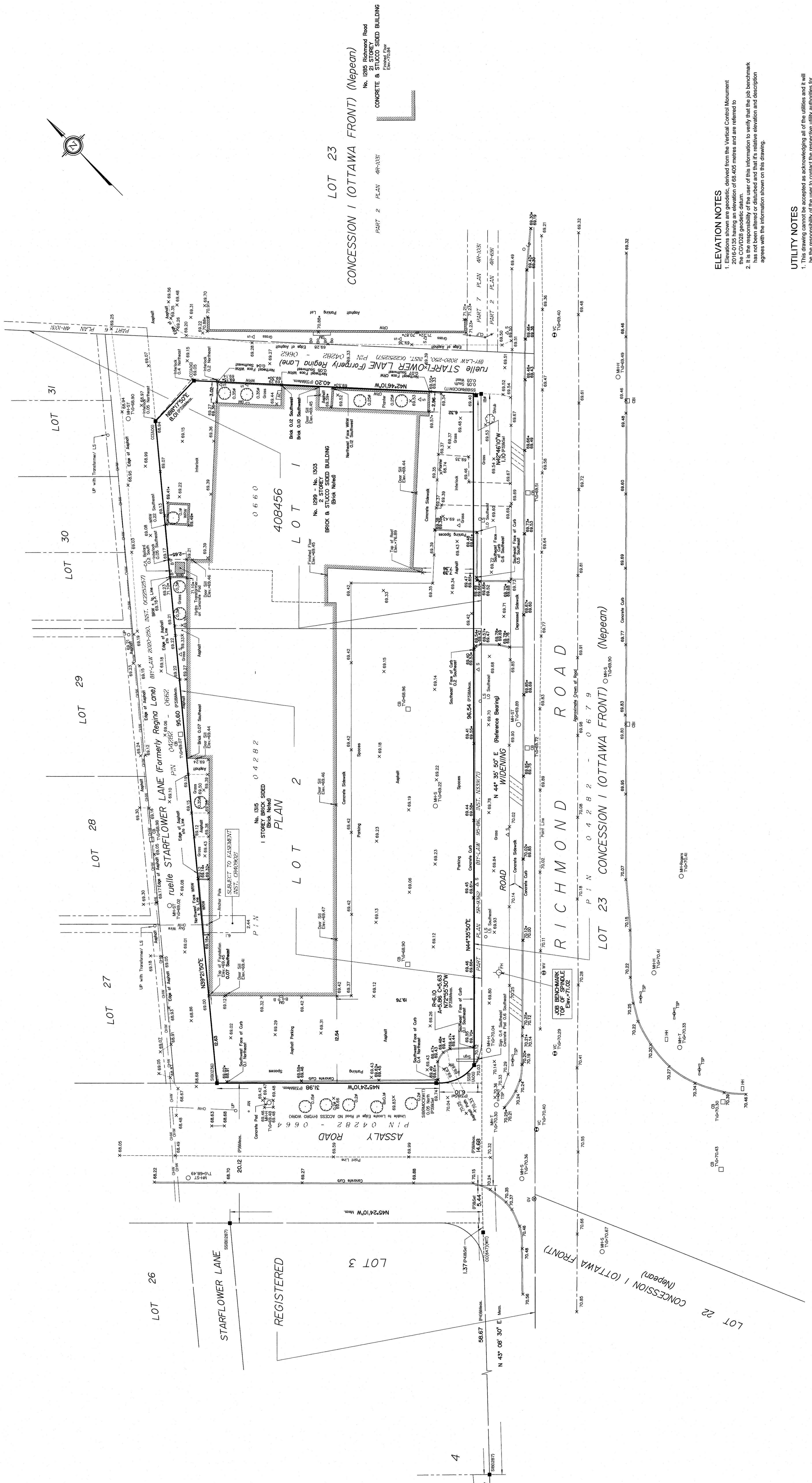
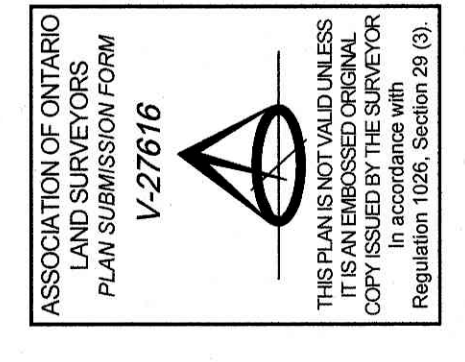
Annis, O'Sullivan, Vollebek Ltd.
 DATE: **May 22, 2022**
 Ontario Land Surveyor

Notes & Legend

- Denotes**
- Survey Monument Planned
 - Survey Monument Found
 - Standard Iron Bar
 - B— Short Standard Iron Bar
 - LP— Round Iron Bar
 - C— Cut Cross
 - (WT)— Witness
 - (M)— Measurement
 - (LCC)— Lot Line Corner
 - (P)— Pin
 - (E)— Elevation
 - (M)— Maintenance Hole (Storm Sewer)
 - (M)— Maintenance Hole (Sanitary)
 - (M)— Maintenance Hole (Traffic)
 - (M)— Maintenance Hole (Hydro)
 - (M)— Fire Hydrant
 - (M)— Water Valve
 - (M)— Valve Chamber (Watermain)
 - (M)— Handhole
 - (M)— Overhead Wires
 - (M)— Utility Pole
 - (M)— Anchor
 - (M)— Light Standard
 - (M)— Catch Basin
 - (M)— Catch Basin Inlet
 - (M)— Bollard
 - (M)— Sign
 - (M)— Chain Link Fence
 - (M)— Top of Grade
 - (M)— Gas Valve
 - (M)— Gas Meter
 - (M)— Air Conditioner
 - (M)— Wooden Retaining Wall
 - (M)— Brick Retaining Wall
 - (M)— Concrete Retaining Wall
 - (M)— Diameter
 - (M)— Location of Elevations
 - (M)— Top of Curb / Wall Elevations
 - (M)— Centreline
 - (M)— Deciduous Tree

Bearings are grid, derived from the southern limit of Part 1 Plan 0R-982, and are referenced to the Mean Sea Level datum of 1985 (M.S.L. 1985) (75°30' West Longitude) NAD83 (original).

SITE AREA = 4142.3 m²



ELEVATION NOTES

- Elevations shown are geoidic, derived from the Vertical Control Monument 2010-05 having an elevation of 68.45 metres and are referred to.
- It is the responsibility of the user of this information to verify that the job benchmark has not been altered or disturbed and that its relative elevation and description agrees with the information shown on this drawing.

UTILITY NOTES

- The utility company is responsible for providing all the utility and full confirmation.
- Only visible surface utilities were located.
- A field location of underground plant by the permit utility authority is mandatory before any work involving breaking ground, probing, excavating etc.