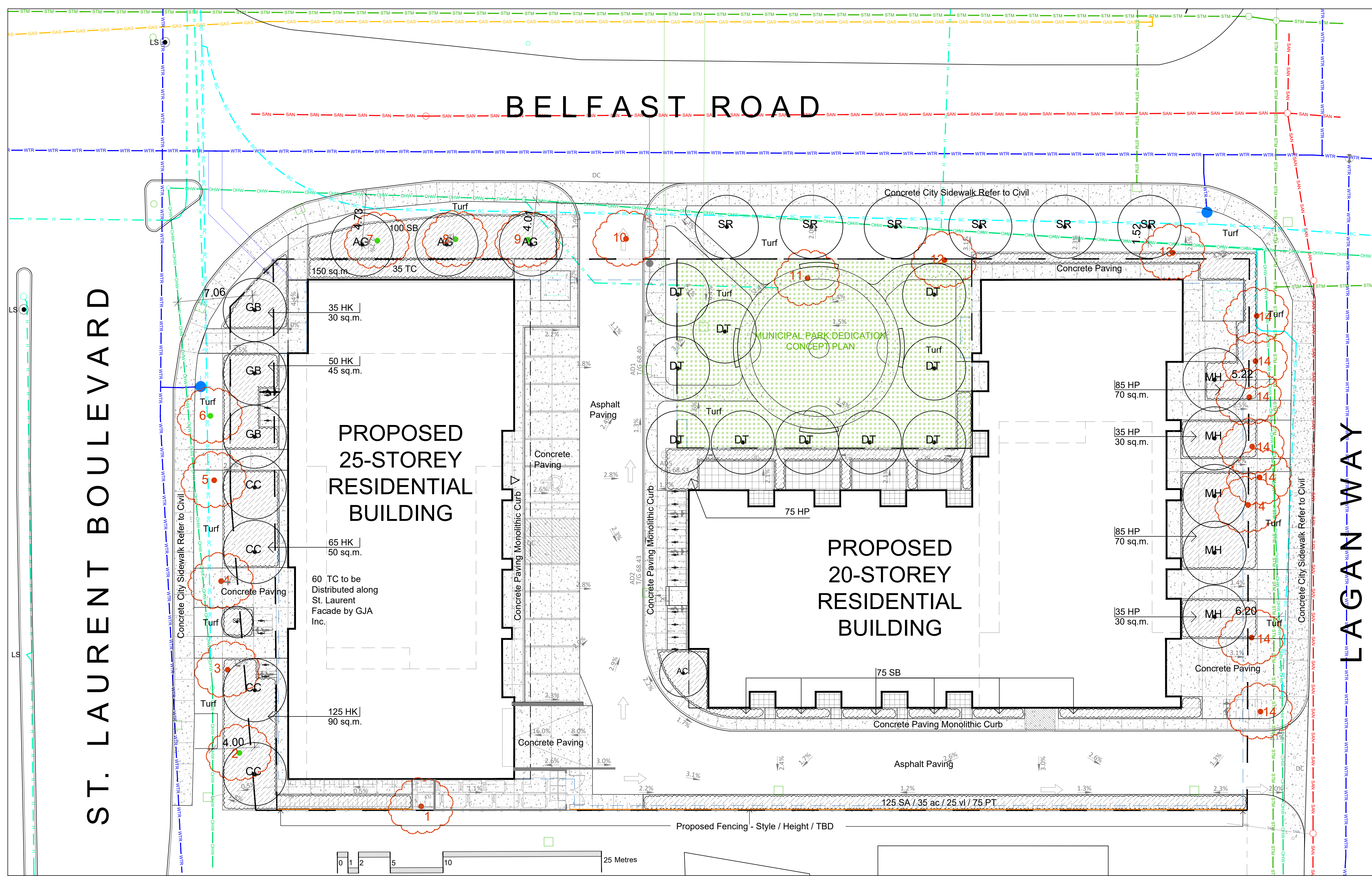


Drawing Remains the Property of/Copyright Reserved by GJA INC. Do Not Use or Reproduce Without Approval of GJA INC. NOT To Be Used For Construction Unless Indicated by Revision: **FOR LANDSCAPE CONSTRUCTION**. Contractor is Responsible for Verification of Site Locations of all Utilities. Report any Discrepancies Between Site and Drawing Immediately to GJA INC. Do NOT Proceed Until Clarified.



REFER TO TCR BY IFS

- Existing Trees - Refer to TCR by IFS for Details/Actions
- Existing Trees - Refer to TCR by IFS for Details/Actions

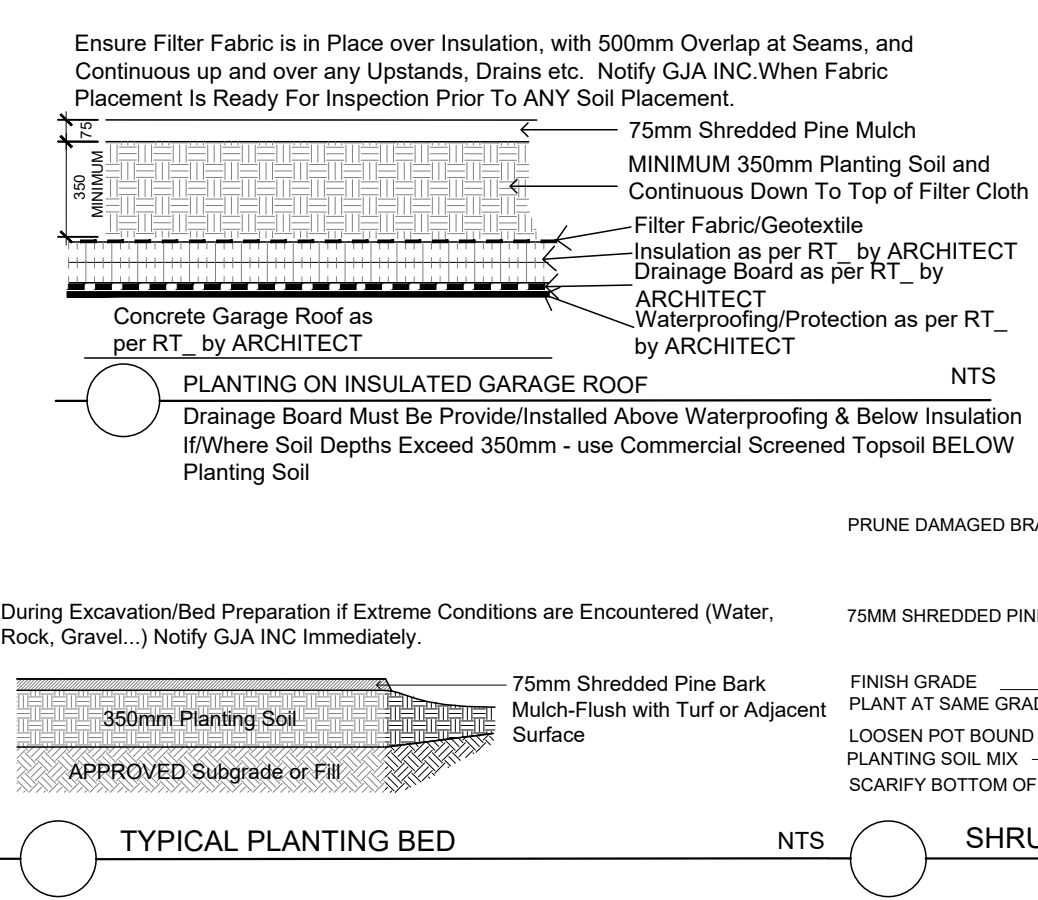
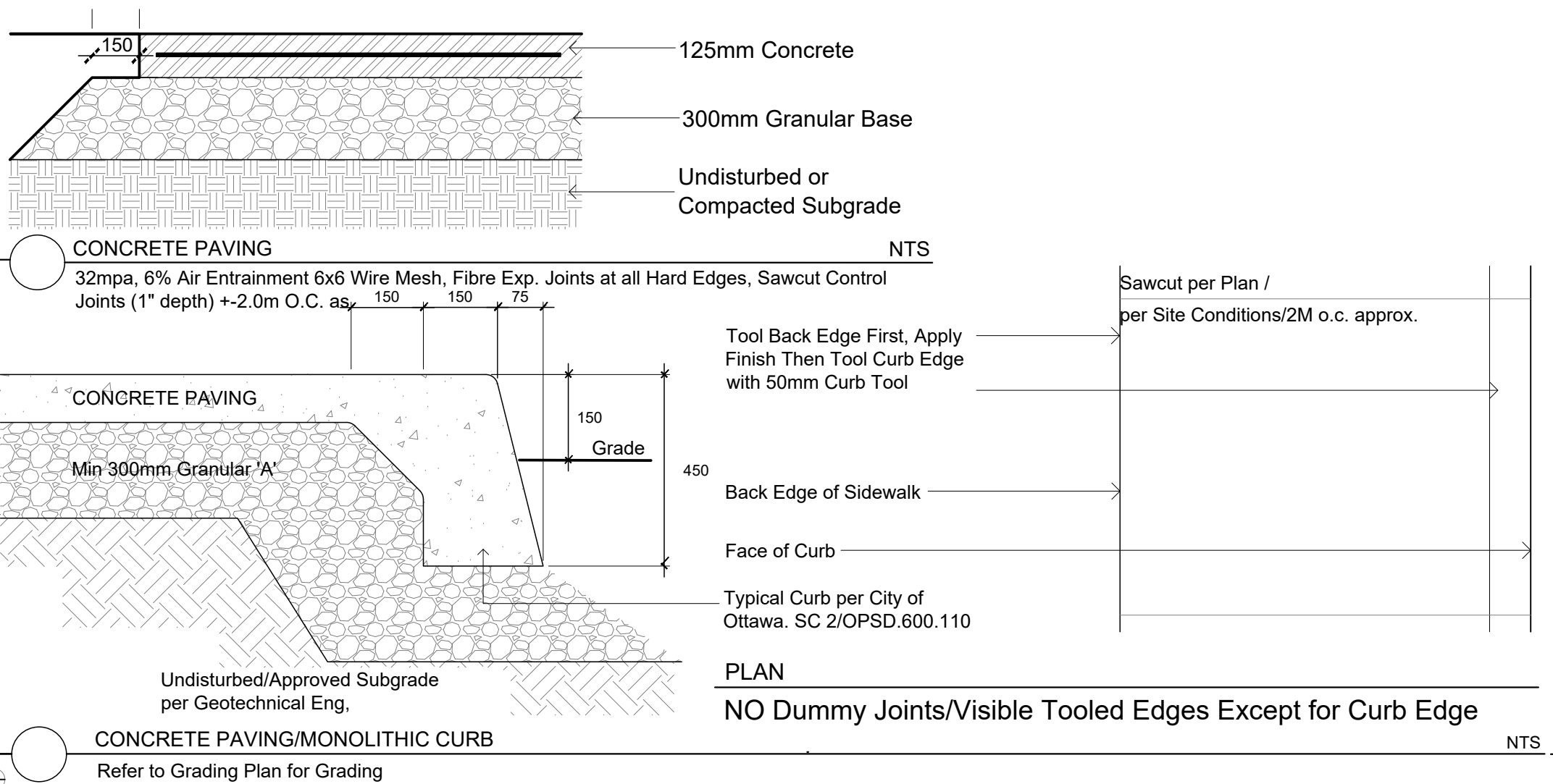
LANDSCAPE PLAN

- Proposed Deciduous Tree
- Shrub Planting Bed
- Concrete Monolithic Curb
- Concrete
- Patio Slabs
- Parking Garage
- Fence
- Bike Rack Anchor to Concrete
- Fire Hydrant
- FD Siamese Connection
- Light Standard
- Seat Wall
- Municipal Park Dedication

BELOW/ABOVE GRADE SERVICES REFER TO CIVIL/CUP

- U/G Water Service
- U/G Storm Service
- U/G Sanitary Service
- U/G Gas Service
- U/G TelCo Service
- U/G Hydro Service
- O/H Hydro Service

CONCRETE - FINISH LIGHT BROOM, WOOD FLOAT MAGNESIUM FLOAT:
ALL CONCRETE FINISHES TO BE APPROVED BY GJA LANDSCAPE ARCHITECT.
SAWCUT LAYOUT FOR ALL AREAS TO BE MARKED ON SITE IN RED CHALK, REVIEWED, ADJUSTED AND APPROVED BY GJA LANDSCAPE ARCHITECT PRIOR TO ANY CUTTING.
EXPANSION JOINT LAYOUT FOR ALL AREAS TO BE LAID OUT ON SITE, REVIEWED, ADJUSTED AND APPROVED BY GJA LANDSCAPE ARCHITECT PRIOR TO ANY CONCRETE POURING.
PROVIDE COLD JOINT DETAIL at End of Previous Pour/Beginning of New Pour, C/W REBAR DOWELS 500mm O.C.
FINISH: TOOL EDGE FIRST, THEN WIPE OFF TOOL MARKS WHILE APPLYING FINISH.



TREES 1531 ST LAURENT KATASA +

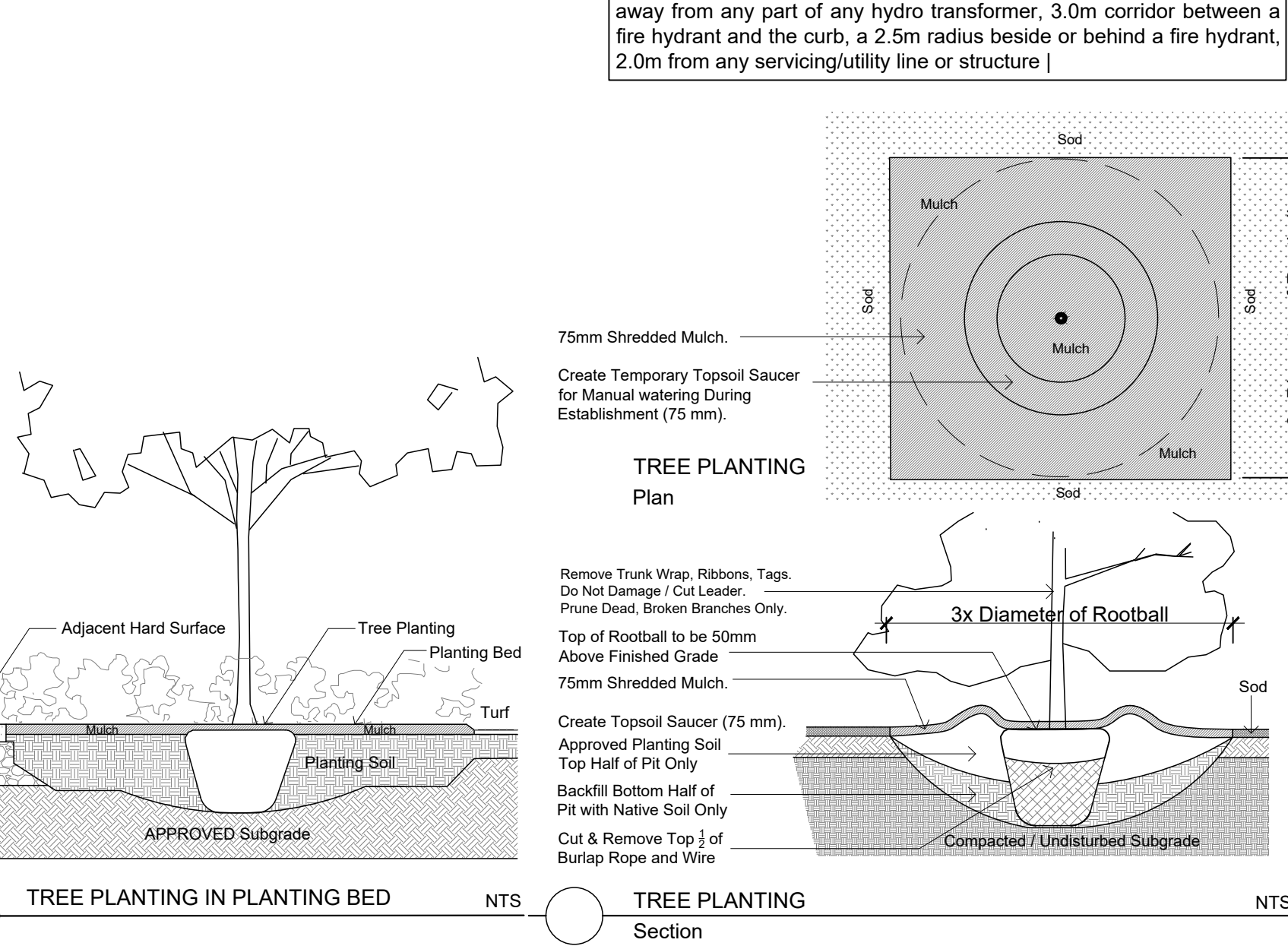
Code	Qty	Botanical Name	Common Name	Size	Condition
AC	3	Aesculus glabra	Ohio Buckeye	60mm cal	B + B specimen
CC	4	Carpinus caroliniana	Hornbeam Bluebeech	60mm cal	B + B specimen
GB	3	Coronilla dioica	Maidenhair Tree	70mm cal	B + B specimen
MH	5	Malus 'Harvest Gold'	Harvest Gold Crabapple	60mm cal	B + B specimen
SR	7	Syringa reticulata	Japanese Tree Lilac	80mm cal	B + B specimen
DT	10	Deciduous Tree TBD by Park Planner			

SHRUBS 1531 ST LAURENT KATASA +

Code	Qty	Botanical Name	Common Name	Size	Condition
ac	35	Amelanchier canadensis	Servicberry	9cm Pot	Pot
HK	275	Hypericum salmianum	Kalm St. John's Wort	9cm Pot	Pot
HP	315	Hypericum prostratum	Shrubby St. John's Wort	9cm Pot	Pot
SA	125	Spiraea alba	Meadowweet	9cm Pot	Pot
SB	175	Spiraea bumalda 'Dart's Red'	Dart's Red Spirea	9cm Pot	Pot
vt	25	Viburnum lentago	Nannyberry	9cm Pot	Pot
TC	95	Taxus cuspidata 'Nana'	Dwarf Japanese Yew	9cm Pot	Pot

OTHER 1531 ST LAURENT KATASA +

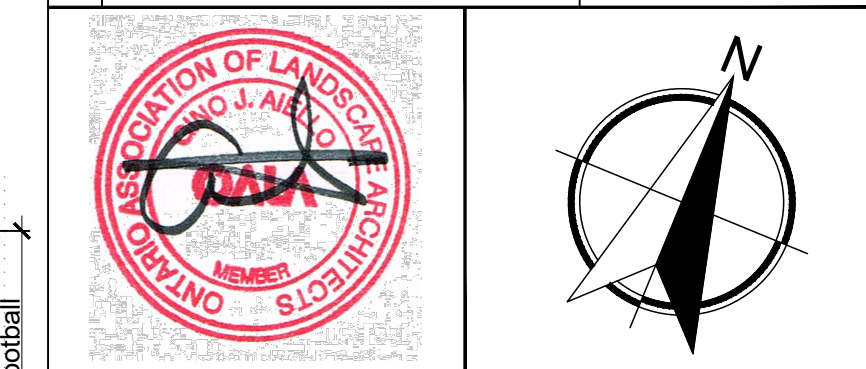
Code	Qty	Botanical Name	Common Name	Condition
75	Arctostaphylos uva-ursi	Bearberry	9cm Pot	Pot
125	Geranium macrorrhizum	Bigroot Geranium	9cm Pot	Pot
125	Geranium pilosystem 'Glowat'	Rosanne Geranium	9cm Pot	Pot
75	Parthenocissus tricuspidata	Boston Ivy	9cm Pot	Pot
75	Panicum virgatum	Switch Grass	9cm Pot	Pot



TURF AREAS TO BE SOD C/W 150MM DEPTH TOPSOIL ON APPROVED SUBGRADE | SOD TO BE #1 GRADE TURFGRASS NURSERY SOD per NSGA - Fine Fescue/Kentucky Bluegrass Sod | PLANTING MIX TO BE APPROVED BY LANDSCAPE ARCHITECT | PLANT MATERIAL TO MEET CNLA STANDARDS/BE APPROVED BY LANDSCAPE ARCHITECT PRIOR TO PLANTING | ALL MATERIALS & WORK TO BE MAINTAINED UNTIL FINAL ACCEPTANCE, (MOWING TURF, WEEDING BEDS, WATERING TURF & PLANTS) & INCLUDE 1 YEAR WARRANTY FROM DATE OF FINAL ACCEPTANCE | PROVIDE WATERING OF ALL PLANT MATERIAL AS REQUIRED FOR PROPER ESTABLISHMENT UNTIL END OF WARRANTY PERIOD | REFER TO CIVIL ENGINEER'S DRAWING FOR ELEVATIONS / GRADING |

The Landscape Plan is to be read in conjunction with the grading, servicing, site and survey plan | Bare root material to be planted in season only | All plant material locations to be staked on site by the landscape contractor and checked by the landscape architect prior to planting | All trees to be preserved on or directly adjacent to the site will be protected | Plant material are to be installed a minimum of 3.0m away from any part of any hydro transformer, 3.0m corridor between a fire hydrant and the curb, a 2.5m radius beside or behind a fire hydrant, 2.0m from any servicing/utility line or structure |

#	REVISION	DATE
1	SPC SUBMISSION 1	MAY 31 2023
0	REVIEW/COORDINATION	MAY 2023



Property Owner **KATASA Group**
Katasa Groupe + Développement 301-69 Jean-Proulx
Gatineau, Quebec J8Z 1W2 Canada

Gino J. Aiello | landscape architect GJALA.com
GJA Inc. Gino@GJALA.com (613) 286 5130
110 Deberry Road Unit # 9 | Ottawa Ontario | K2T 0C2

Project **MIXED-USE RESIDENTIAL BUILDINGS**
1531 ST. LAURENT BLVD, OTTAWA, ON
K1G 1A1

LANDSCAPE PLAN
Scale: 1:200 **L1**