

**PART OF BLOCK 123
REGISTERED PLAN 13
CITY OF OTTAWA**
Surveyed by Annis, O'Sullivan, Vollebek Ltd.

Scale 1 : 125
5.0 3.75 2.5 1.25 0 2.5 5 Metres

Metric
DISTANCES SHOWN ON THIS PLAN ARE IN METRES AND CAN BE CONVERTED TO FEET BY DIVIDING BY 0.3048

Surveyor's Certificate
I CERTIFY THAT:
1. This survey and plan are correct and in accordance with the Surveys Act and the Surveyors Act and the regulations made under them.
2. The survey was completed on the 1st day of December, 2021.

Date: Dec 10/21
T. Hartwick
Ontario Land Surveyor

Notes & Legend

Denotes	
□	Survey Monument Planted
■	Survey Monument Found
IB	Iron Bar
SSIB	Short Standard Iron Bar (0.30) Long Survey Monument
CC	Cut Cross
(WIT)	Witness
Meas.	Measured
(AOG)	Annis, O'Sullivan, Vollebek Ltd.
(P1)	Registered Plan 66
(P2)	(1319) Plan dated March 25, 1986
(P3)	(1236) Plan dated March 10, 2005
(P4)	(1287) Plan dated April 4, 2002
(P5)	(AOG) Plan dated March 6, 2001
(DI)	Instrument N624045
○ MH-S	Maintenance Hole (Sanitary)
○ MH	Maintenance Hole (Unidentified)
— OHW	Overhead Wires
○ LP	Utility Pole
○ LS	Light Standard
□ CB	Catch Basin
□ ICB	Inlet Catch Basin
□ FH	Fire Hydrant
○ WV	Water Valve
— S	Underground Combined Sewer
— W	Underground Water
T/G	Top of Grate
□ HH	Handhole
□ GM	Gas Meter
○ B	Bollard
△ S	Sign
CLF	Chain Link Fence
BF	Board Fence
RWC	Concrete Retaining Wall
SWC	Concrete Sidewalk
∅	Diameter
∅	Location of Elevations
+65.00	Top of Concrete Curb Elevation and Retaining Wall Elevation
+65.00*	Centreline
C/L	Property Line
○	Deciduous Tree

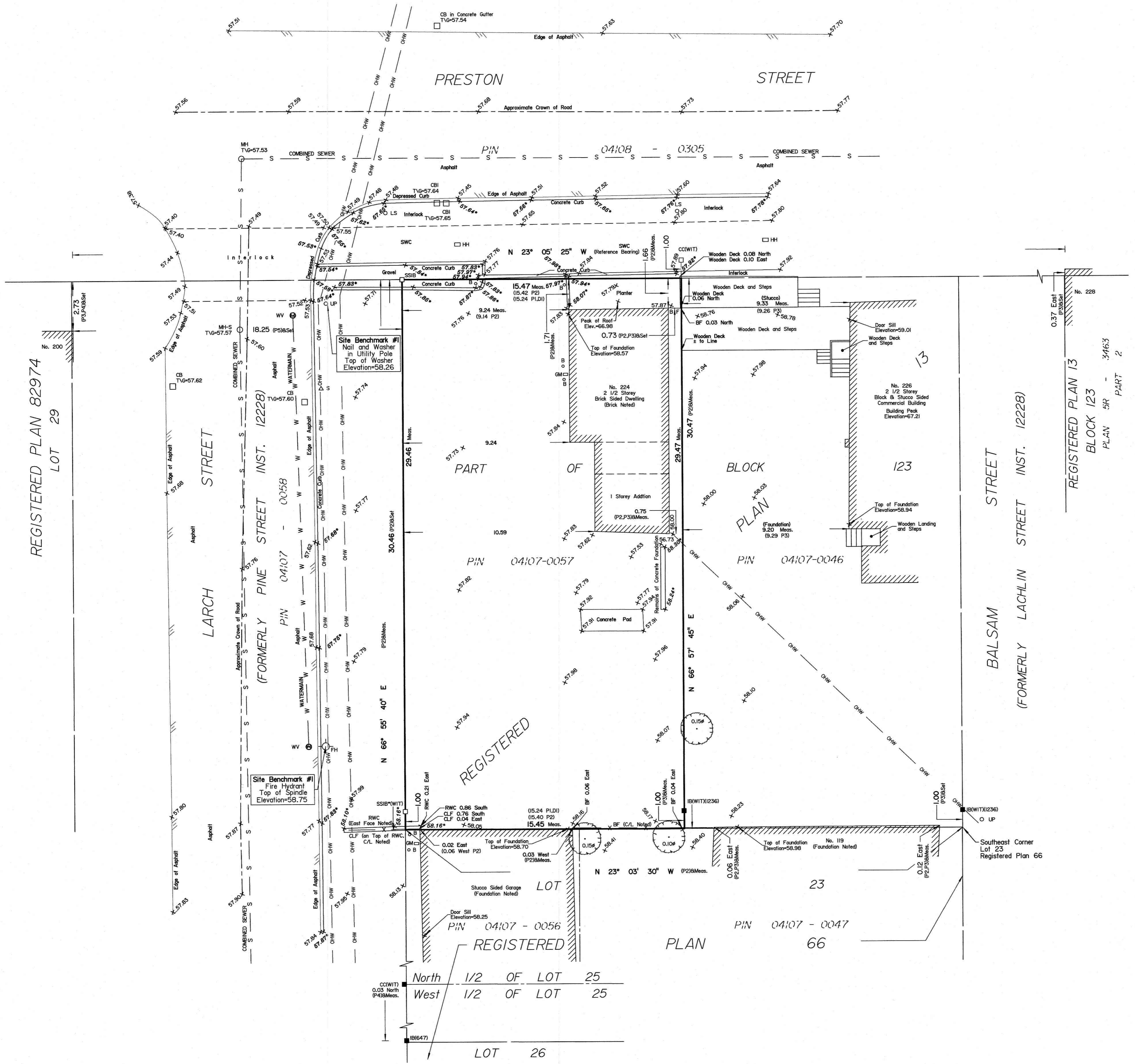
ASSOCIATION OF ONTARIO LAND SURVEYORS
PLAN SUBMISSION FORM
V-19559

THIS PLAN IS NOT VALID UNLESS IT IS AN EMBOSSED ORIGINAL COPY ISSUED BY THE SURVEYOR in accordance with Regulation 1026, Section 29 (3).

Bearings are astronomic and are referred to the westerly limit of Preston Street shown to be N23°05'25"W on (1319) Plan dated March 25, 1986.

ELEVATION NOTES
1. Elevations shown are geodetic and are referred to the CGVD28 geodetic datum.
2. It is the responsibility of the user of this information to verify that the job benchmark has not been altered or disturbed and that its relative elevation and description agrees with the information shown on this drawing.

UTILITY NOTES
1. This drawing cannot be accepted as acknowledging all of the utilities and it will be the responsibility of the user to contact the respective utility authorities for confirmation.
2. Only visible surface utilities were located.
3. A field location of underground plant by the pertinent utility authority is mandatory before any work involving breaking ground, probing, excavating etc.



North 1/2 OF LOT 25
West 1/2 OF LOT 25
LOT 26