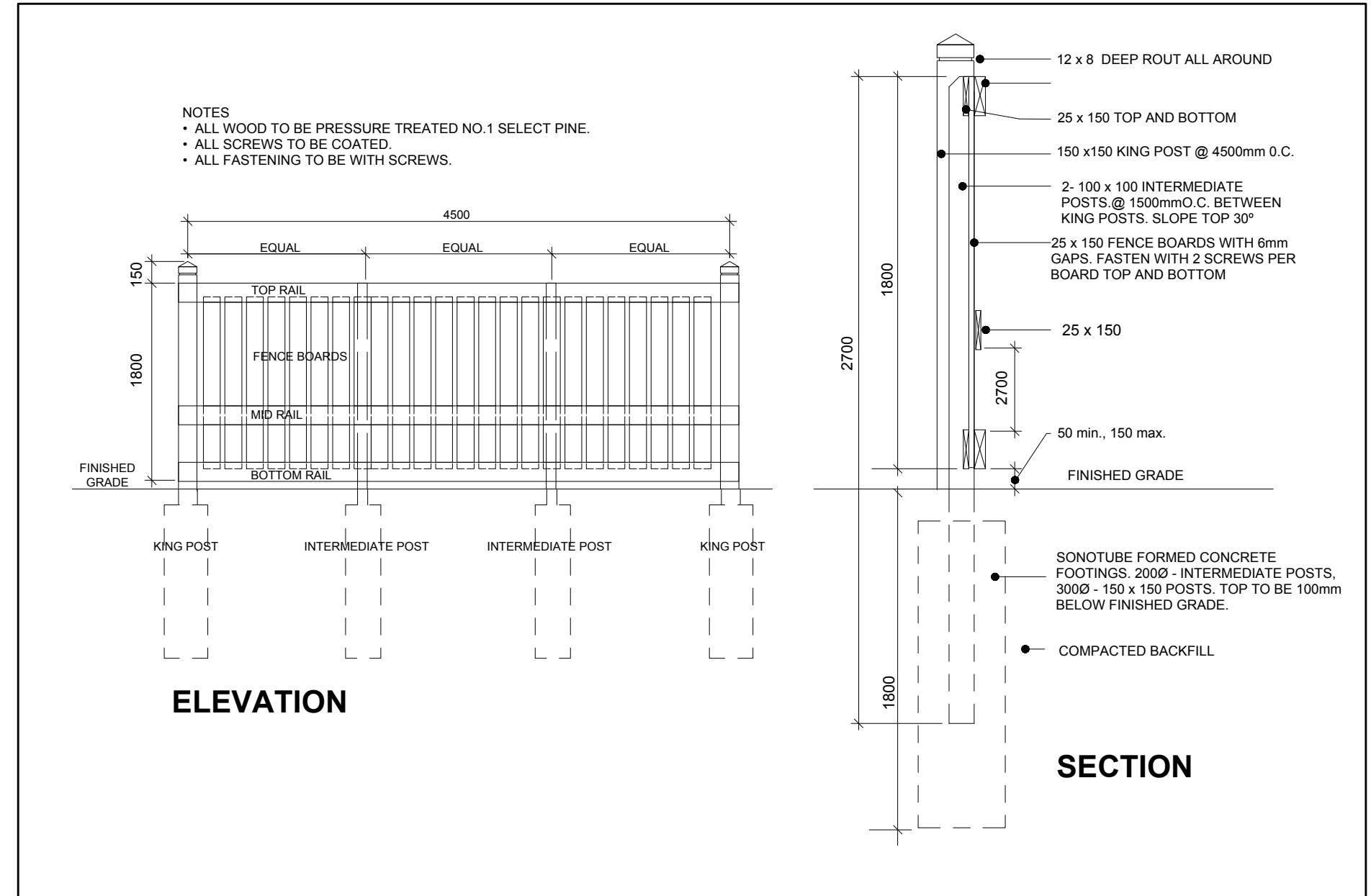
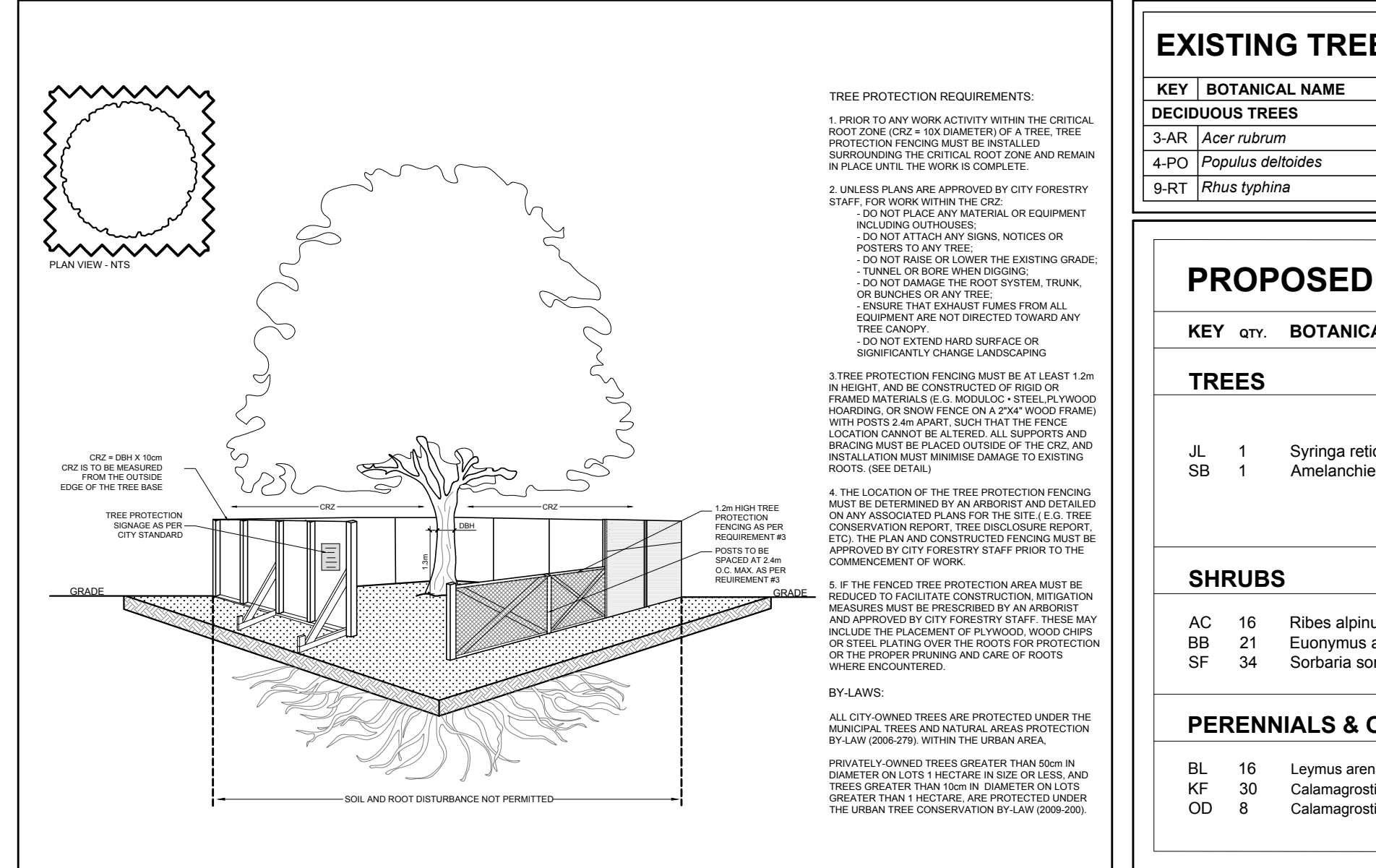


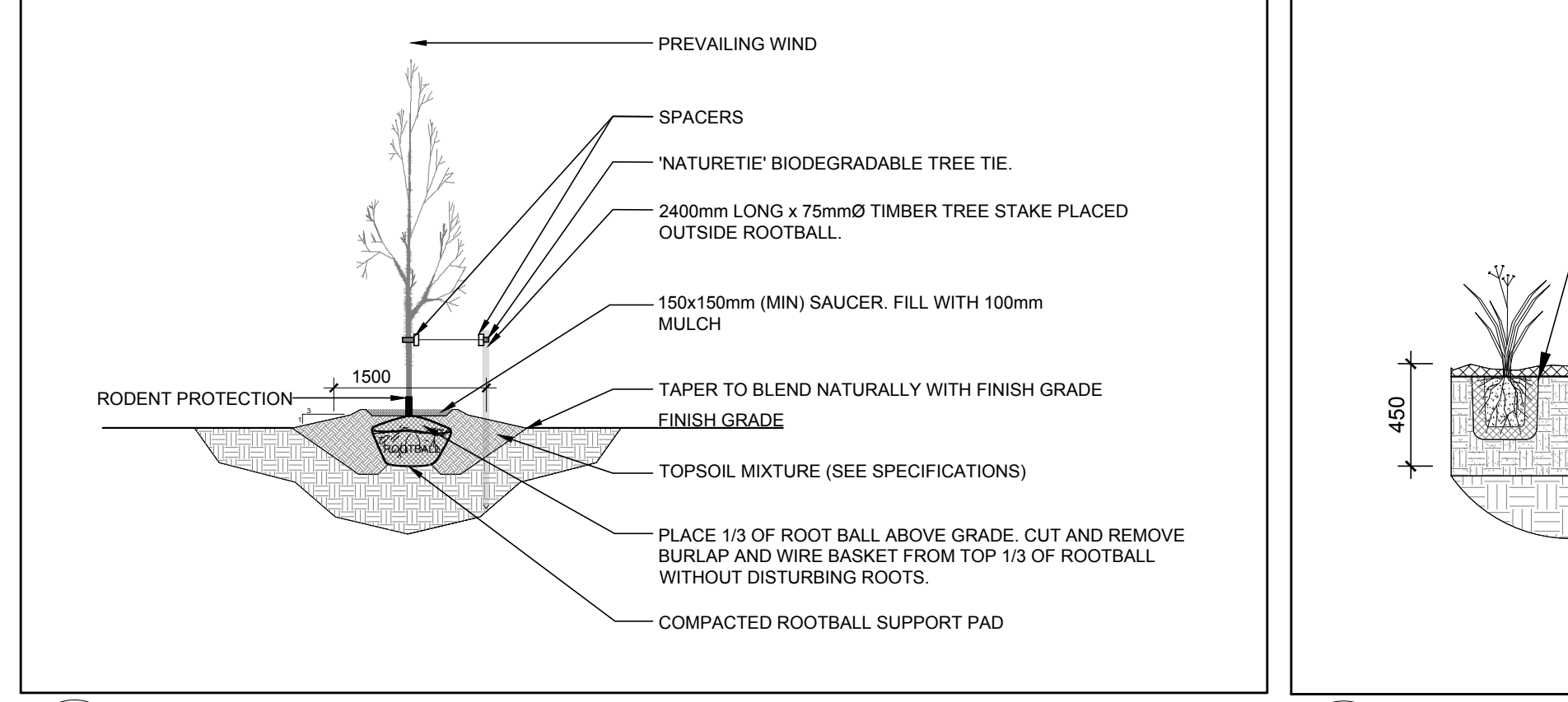
1 TREE CONSERVATION REPORT & LANDSCAPE PLAN
 SCALE: 1:200



2 1.8m Ht. WOOD SCREEN FENCE
 SCALE: NTS



3 TREE PROTECTION FENCING
 SCALE: NTS



4 DECIDUOUS TREE PLANTING
 SCALE: NTS

GENERAL NOTES:

- It is the responsibility of the appropriate contractor or official to report any errors, omissions or discrepancies on this plan with actual site conditions to the Landscape Architect before proceeding with construction.
- The contractor is to notify all utility companies and authorities prior to any excavation and ascertain locations of underground services.
- The contractor is to reinstaate all areas and items damaged as a result of construction activity.
- The contractor is to comply with all pertinent codes and by-laws.
- The contractor is to maintain a positive surface run-off throughout the entire construction period.
- The Landscape Architect is not responsible for subsurface conditions.
- The contractor is to identify all existing trees to remain on site with the Landscape Architect prior to construction.
- The contractor is to stake the proposed location of all plant material in conjunction with the Landscape Architect prior to excavation.
- Minimum distances for selected deciduous trees are as follows:
 - Building Foundations 7.5m
 - Sidewalks 1.5m
 - Public Streets 2.5m
 - Underground Infrastructure 2.0m
- Remove all protective wrapping from tree trunks after installation.
- Staking of trees shall only be performed if necessary.
- Ensure that mulch is pulled back a min. distance of 75mm from base of tree trunk.

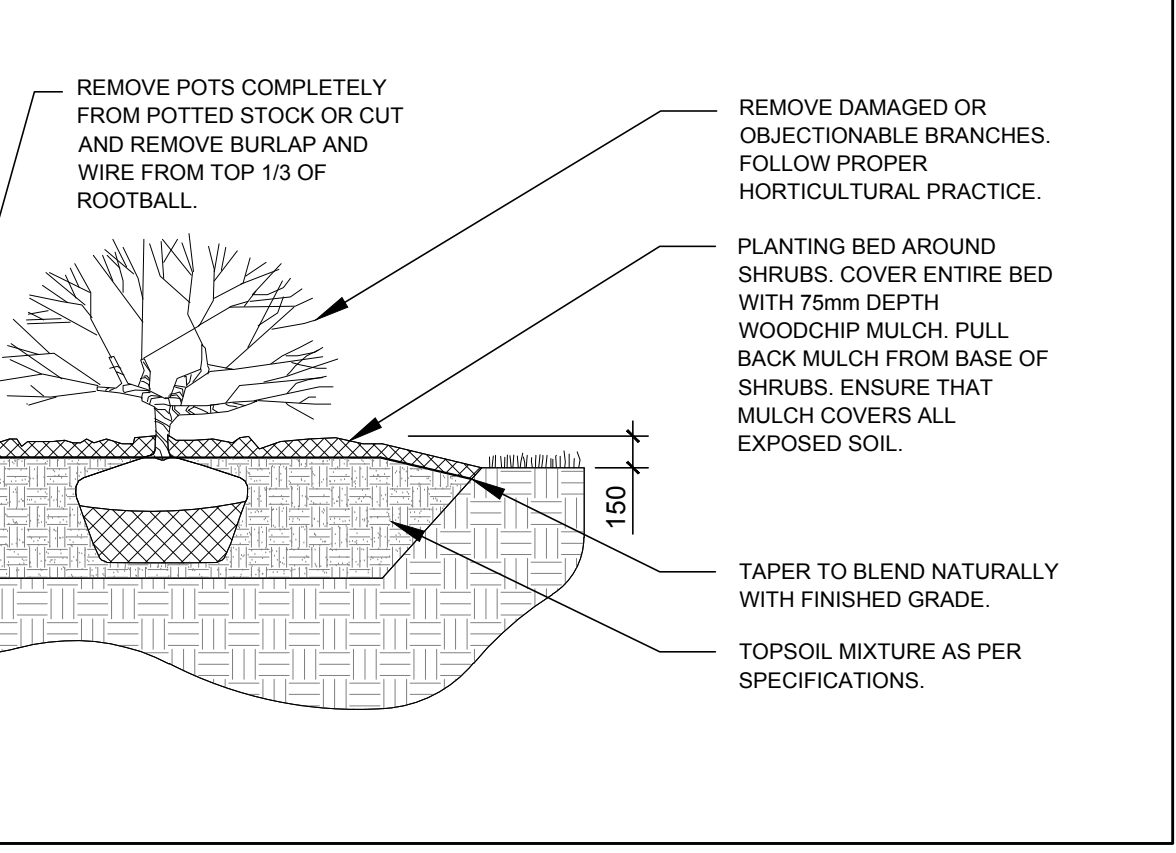
EXISTING TREE LIST

KEY	BOTANICAL NAME	COMMON NAME	SIZE	OWNERSHIP	CONDITION	ACTION
DECIDUOUS TREES						
3-AR	<i>Acer rubrum</i>	Red Maple	180-200mm DBH	530 Lacolle Way	GOOD	TO REMAIN
4-PO	<i>Populus deltoides</i>	Eastern Cottonwood	50-100mm DBH	3745 St. Joseph Blvd	GOOD	TO BE REMOVED
9-RT	<i>Rhus typhina</i>	Staghorn Sumac	150-200mm DBH	3745 St. Joseph Blvd	GOOD	TO BE REMOVED

PROPOSED PLANT LIST

KEY	QTY	BOTANICAL NAME	COMMON NAME	SIZE	CONDITION	REMARKS
TREES						
JL	1	<i>Syringa reticulata</i>	Japanese Tree Lilac	60mm ø	B&B	Single leader
SB	1	<i>Amelanchier canadensis</i>	Serviceberry	60mm ø	B&B	Single leader
SHRUBS						
AC	16	<i>Ribes alpinum</i>	Alpine Currant	600mm ht.	Potted	
BB	21	<i>Euonymus alatus 'Compactus'</i>	Dwarf Burning Bush	600mm ht.	Potted	800mm o.c.
SF	34	<i>Sorbaria sorbifolia 'Sem'</i>	Sem False Spirea	600mm ht.	Potted	1000mm o.c.
PERENNIALS & ORNAMENTAL GRASSES						
BL	16	<i>Leymus arenarius 'Blue Dune'</i>	Blue Dune Grass	250mm pot	Potted	800mm o.c.
KF	30	<i>Calamagrostis 'Karl Foerster'</i>	Feather Reed Grass	250mm pot	Potted	800mm o.c.
OD	8	<i>Calamagrostis 'Overdam'</i>	Overdam Grass	250mm pot	Potted	800mm o.c.

5 SHRUB / ORNAMENTAL GRASS / PERENNIAL PLANTING
 SCALE: NTS



5 SHRUB / ORNAMENTAL GRASS / PERENNIAL PLANTING
 SCALE: NTS

CLIENT

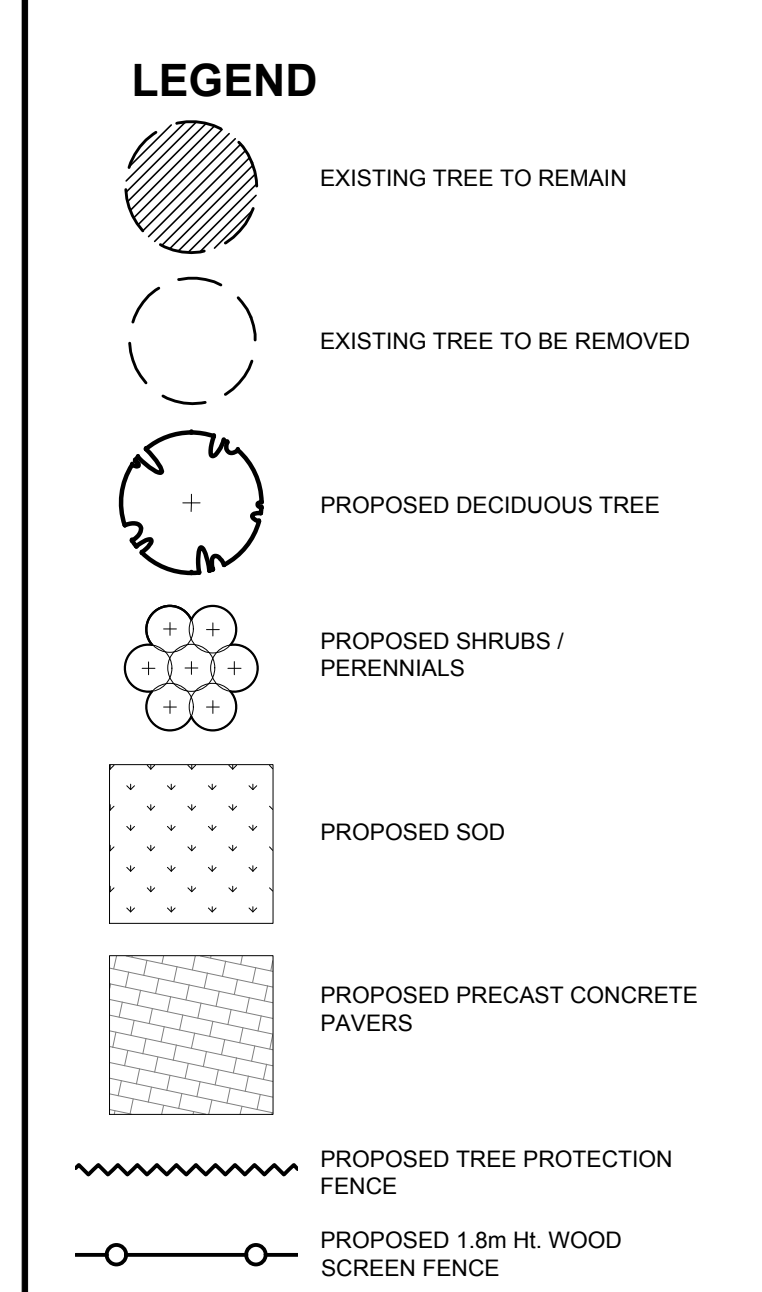
13890767 Canada Inc.

CONSULTANTS

ARCHITECTS:
CSV ARCHITECTS
 sustainable design · conception écologique
 613.564.8118
 www.csv.ca

190 O'Conner Street, Suite 100
 Ottawa, Ontario K2P 2K3

SURVEYORS:
 ANNIS, O'SULLIVAN, VOLLEBEKK LTD.
 14 Concourse Gate, Suite 500
 Nepean, Ont. K2E 7S6
 Phone: (613) 727-0850 / Fax: (613) 727-1079
 Email: nepean@ovsintl.com



NO.	ISSUED FOR	DATE	ML	JL
1	ISSUED FOR SITE PLAN CONTROL	05/12/2023	ML	JL
	Issue	Date	DR	CK
	Issue	Date	DR	CK

JAMES B. LENNOX & ASSOCIATES INC.
LANDSCAPE ARCHITECTS
 3332 CARLING AVE. OTTAWA, ONTARIO K2H 5A8
 Tel. (613) 722-8168 Fax. (613) 343-3942

PROJECT
PROPOSED DEVELOPMENT
 3745 ST. JOSEPH BLVD, OTTAWA ON

DRAWING
TREE CONSERVATION REPORT & LANDSCAPE PLAN

STAMP

SCALE
 AS SHOWN

START DATE
 MARCH 2023

PROJECT NO.
 23MIS2327

PROJECT NORTH

DRAWING NO.
L.1

PLOT SIZE ARCH-D